



Highly pathogenic avian influenza in Germany

Current Situation

SCoPAFF-meeting on 23.04.2021

Content

1. Current situation in wild birds
2. Current situation in poultry and captive birds 'non-poultry'
3. Event in back yard holdings
4. Cluster in Lower Saxony
5. Intra-EU movement from HPAI-surveillance zones
6. Summary



Situation in **wild** birds

- **Increase of cases up to 22/4/2021**

1.233 cases

(830 - PAFF – MAR)

(601 - PAFF – FEB)

(498 - PAFF - JAN)

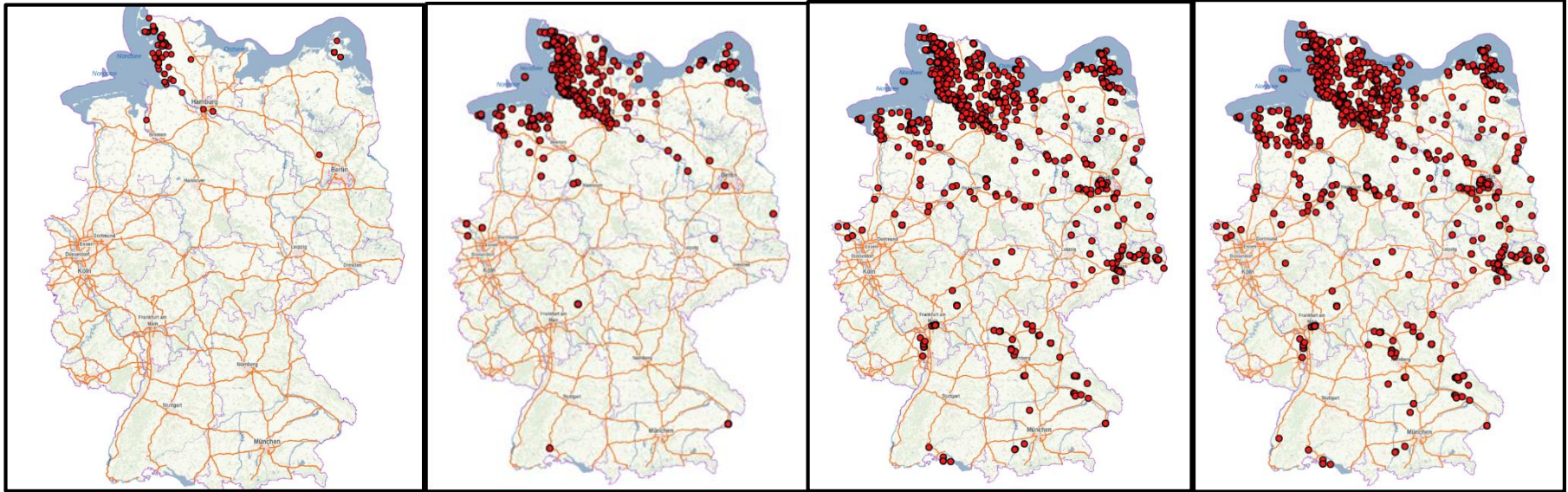
- **Serotypes detected:**

H5N8, -N5, -N4, -N3, -N1

Mainly H5N8



Situation in **wild** birds – EVOLUTION



7/11/2020

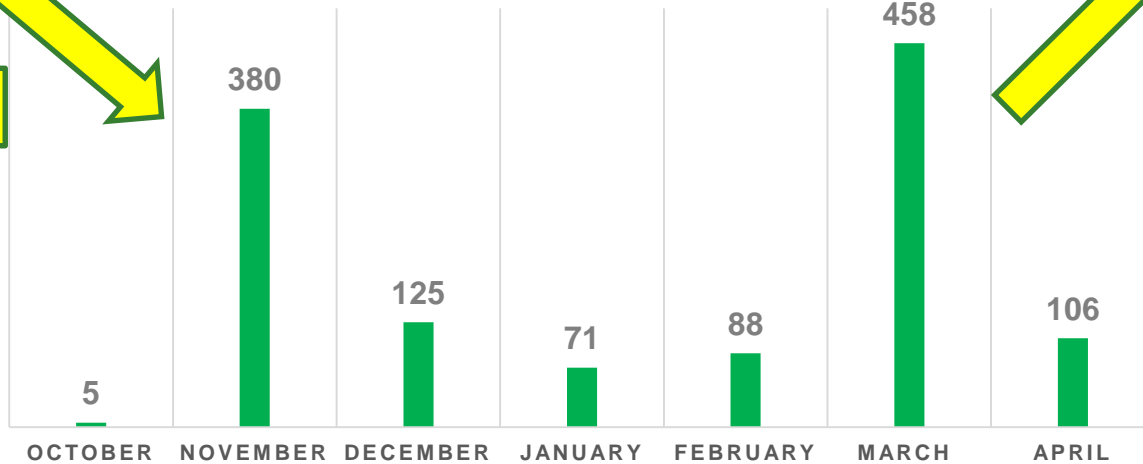
31/12/2020

24/03/2021

22/04/2021

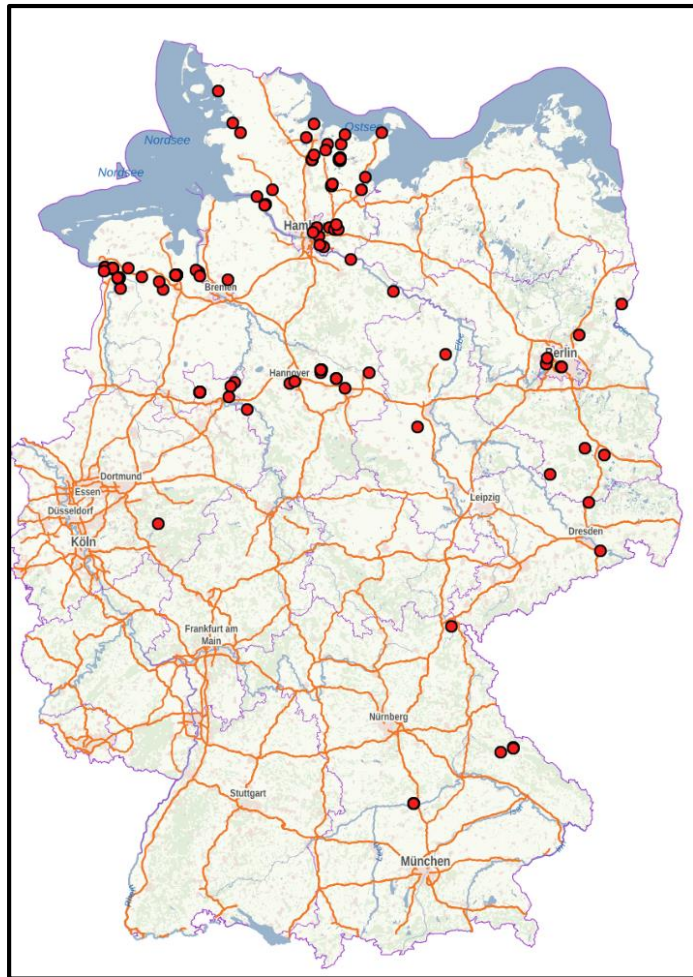
CASES WILD BIRDS / MONTH

Migration

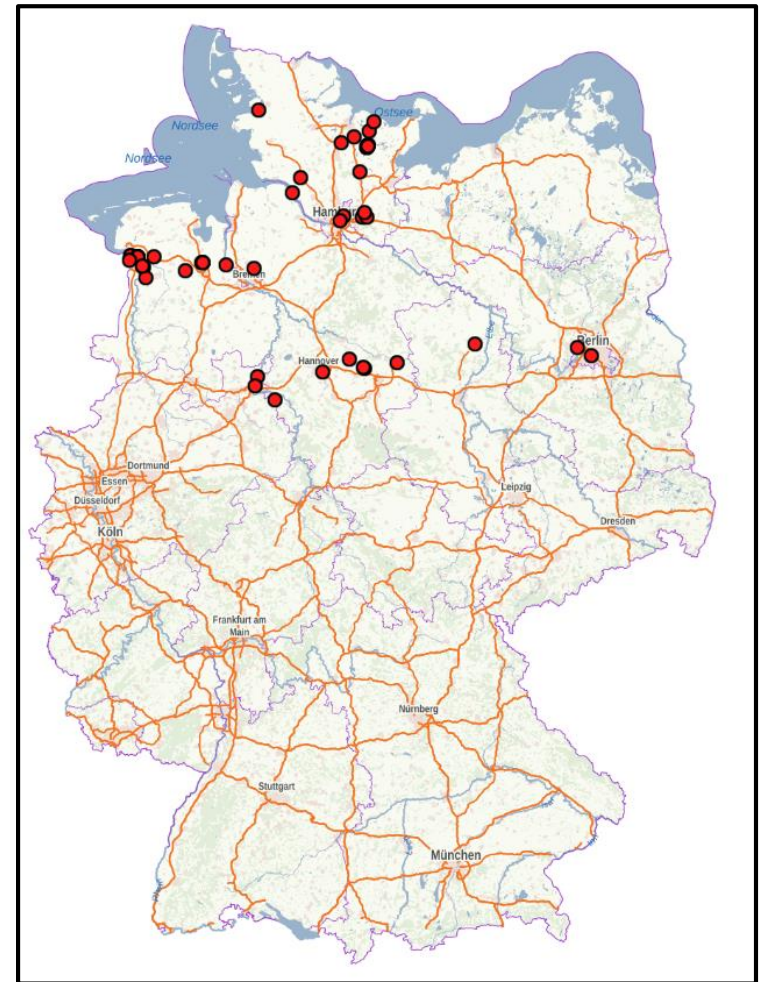


Migration

Situation in **wild** birds – April 2021



April 2021
106 cases



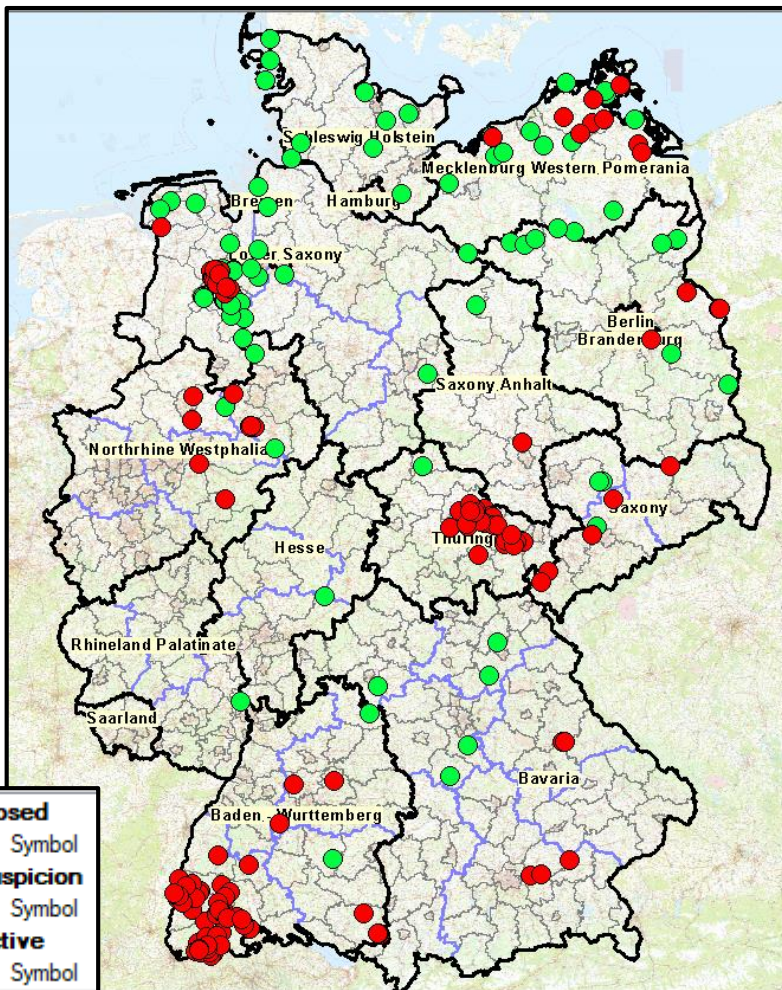
Last 7 days: 15/04 – 22/04/2021
47 cases
only in the northern part of the country



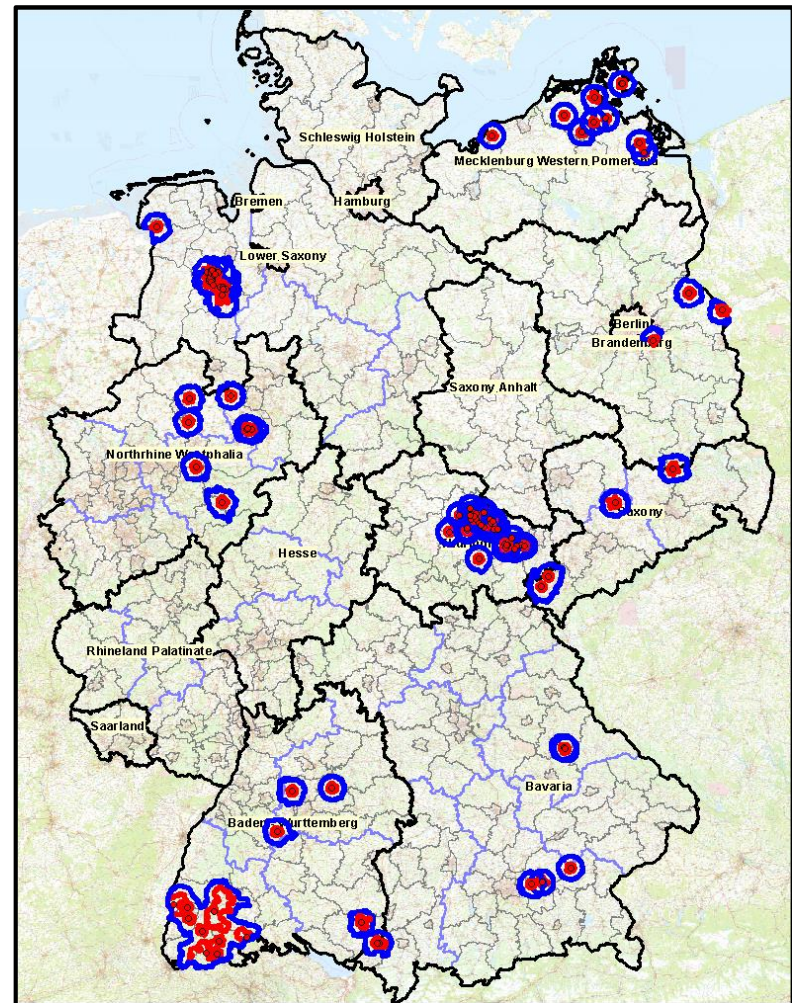
Bundesministerium
für Ernährung
und Landwirtschaft

Poultry / captive birds – 22/4/2021;

- **total confirmed: 252**
(99 – PAFF March; 55 PAFF - FEB; 39 - PAFF - JAN);
- **active: 155; closed: 97; suspicion : 0 cases**



All cases – including closed cases

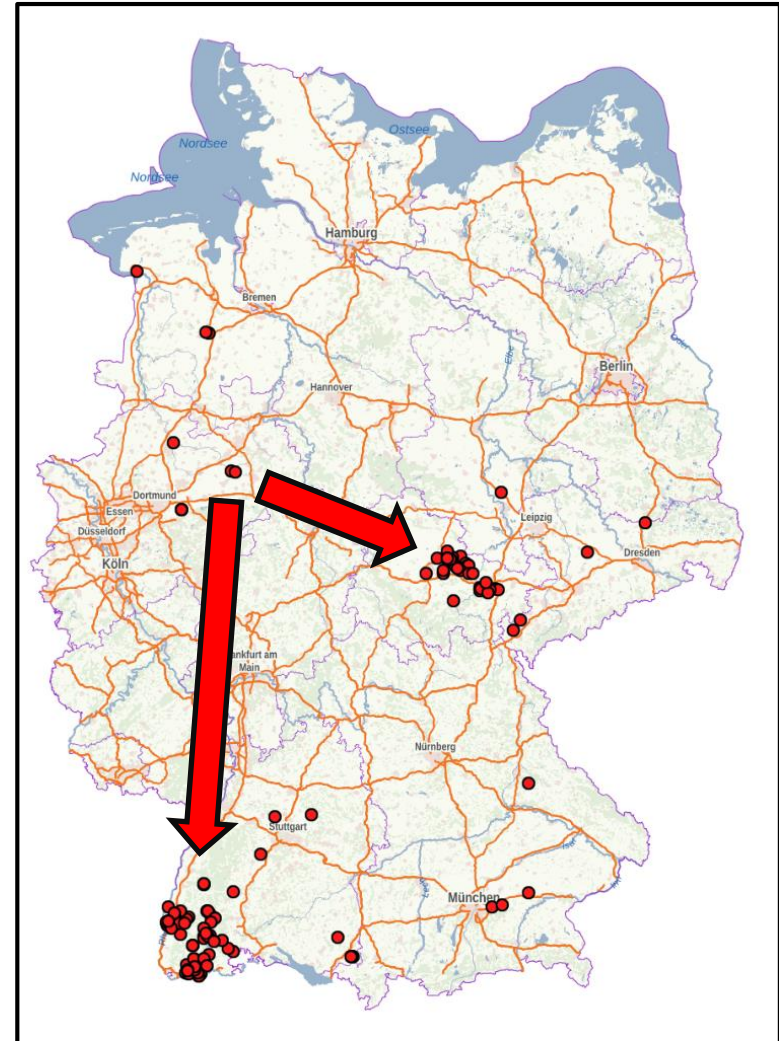


Current active restricted zones

HPAI event in back yards

20/3/2021 – 22/3/2021

- Birds and poultry trader from North Rhine-Westphalia delivered birds to several backyard holdings in 6 Länder.
- The most affected Länder: Baden-Württemberg and Thuringia.
- Confirmation in the establishment of origin on 22/3/2021
- Deliveries from 15 – 19/3/2021 high risk of infection.

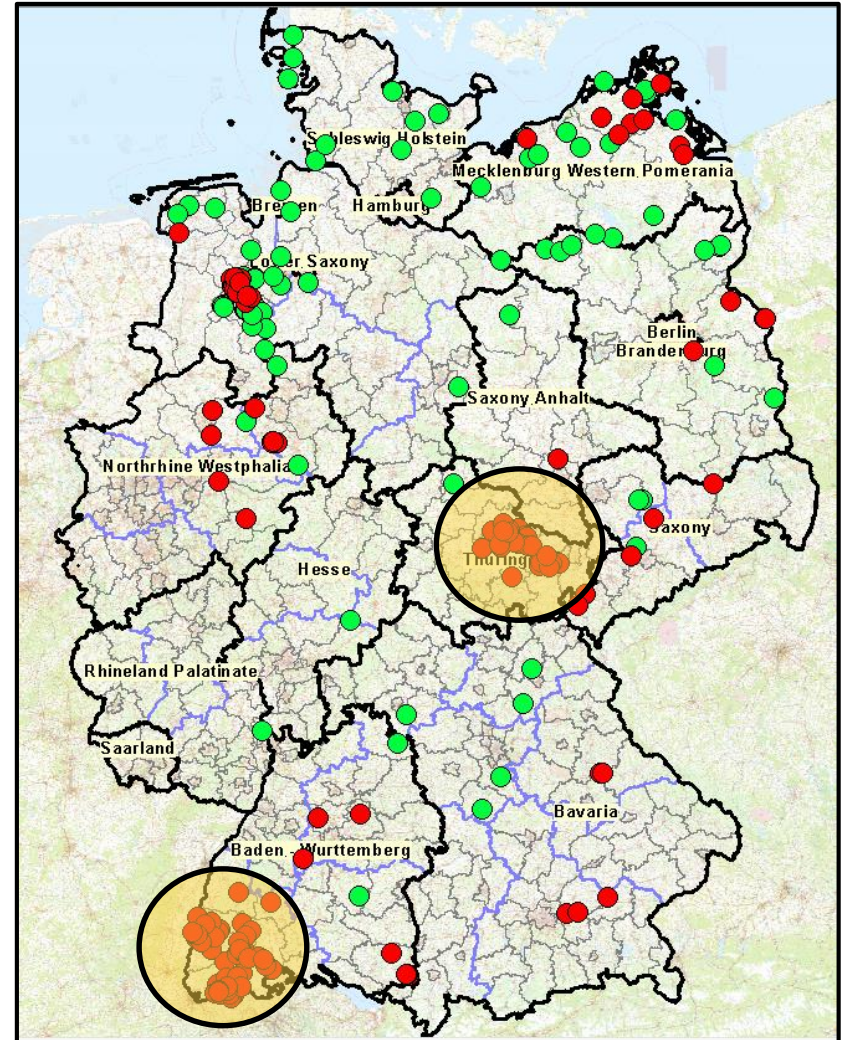


Deliveries

HPAI event in back yards

20/3/2021 – 22/3/2021

- Average amount of birds delivered around 5 – 20 birds.
- Holdings affected: mostly poultry but also certain captive birds other than poultry
- In total around 105 outbreaks in back yards with an average of 10 – 25 birds (final report Länder will be completed ASAP)



Affected regions

HPAI event in back yards

Measures taken

- A real comprehensive exercise for a high number of competent authorities
- The birds were just 4-7 days in the holdings.
In the infected holdings clinical signs were present.
- Killing: just a low number of birds
- Cleaning and disinfection: small establishments easy to disinfect
Clinical check, sampling and laboratory testing
- Epidemiological enquiry: clear entry of the virus and clear end point in the back yard.
- Press releases local and regional to ensure that all contact holdings were identified.
- No dispatch to other EU Member States or to Non-EU countries

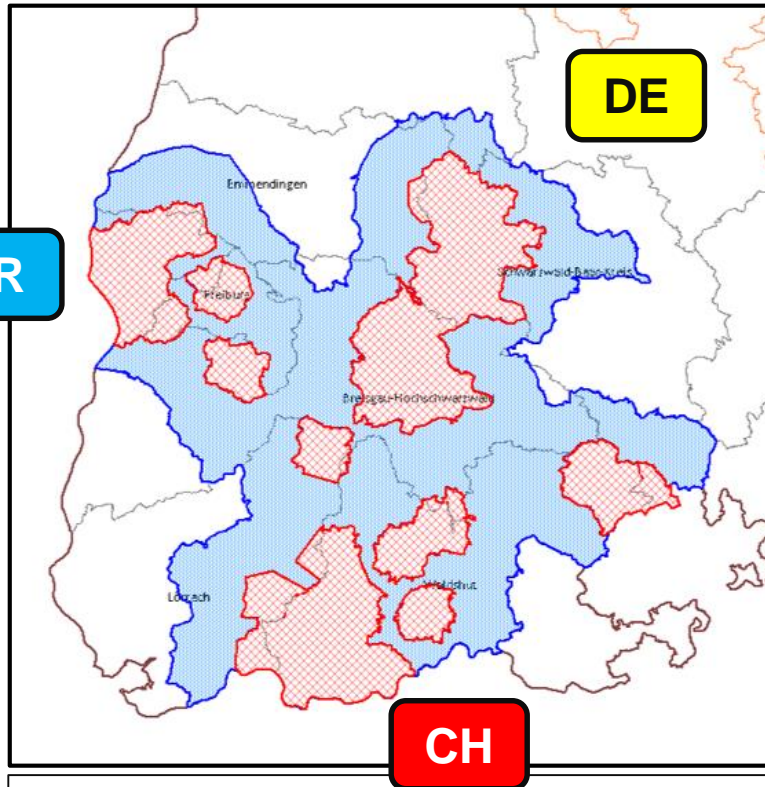
HPAI event in back yards

Measures taken

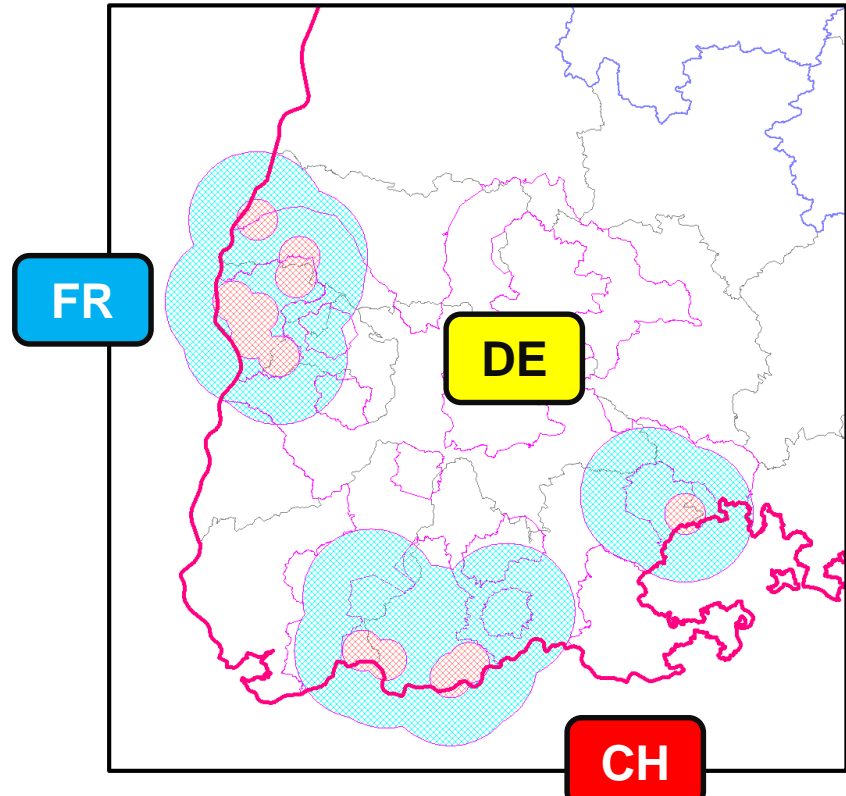
- Restricted zones have been established
- Just some few derogations for certain holdings with captive birds other than poultry. Most of those captive birds holdings are situated in restricted zones established due to outbreaks in poultry holdings in the region.
- In the high risk area the mobile trade with poultry was banned, respectively permitted just, if the poultry was examined with negative results not earlier than 4 days before delivery (national legislation supplemented after the HPAI event 2016-2017)
- Some of the outbreaks in Baden-Württemberg are situated closer than 10 or even 3 km from the French and the Swiss border. The competent authorities have been informed without undue delay.

HPAI event in back yards

Restricted zones in Baden-Württemberg



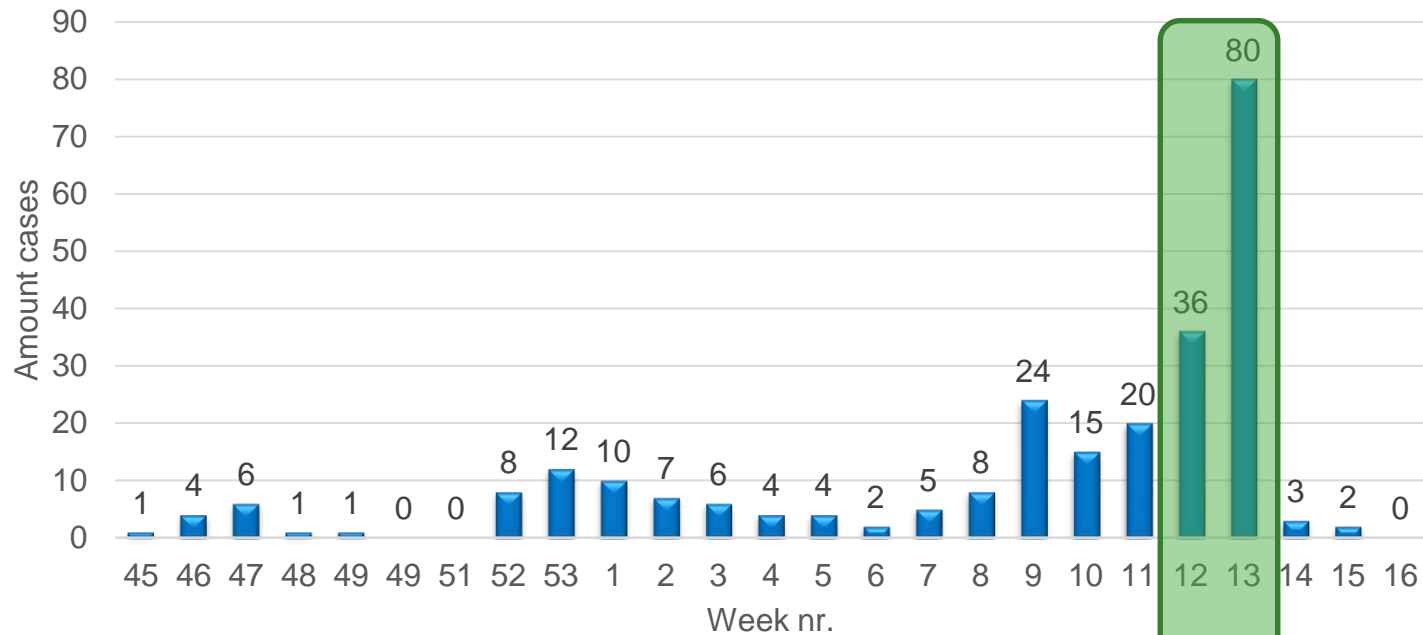
Overview: Protection zones and surveillance zone



Overview: 3 and 10 km circles that affect France and Switzerland

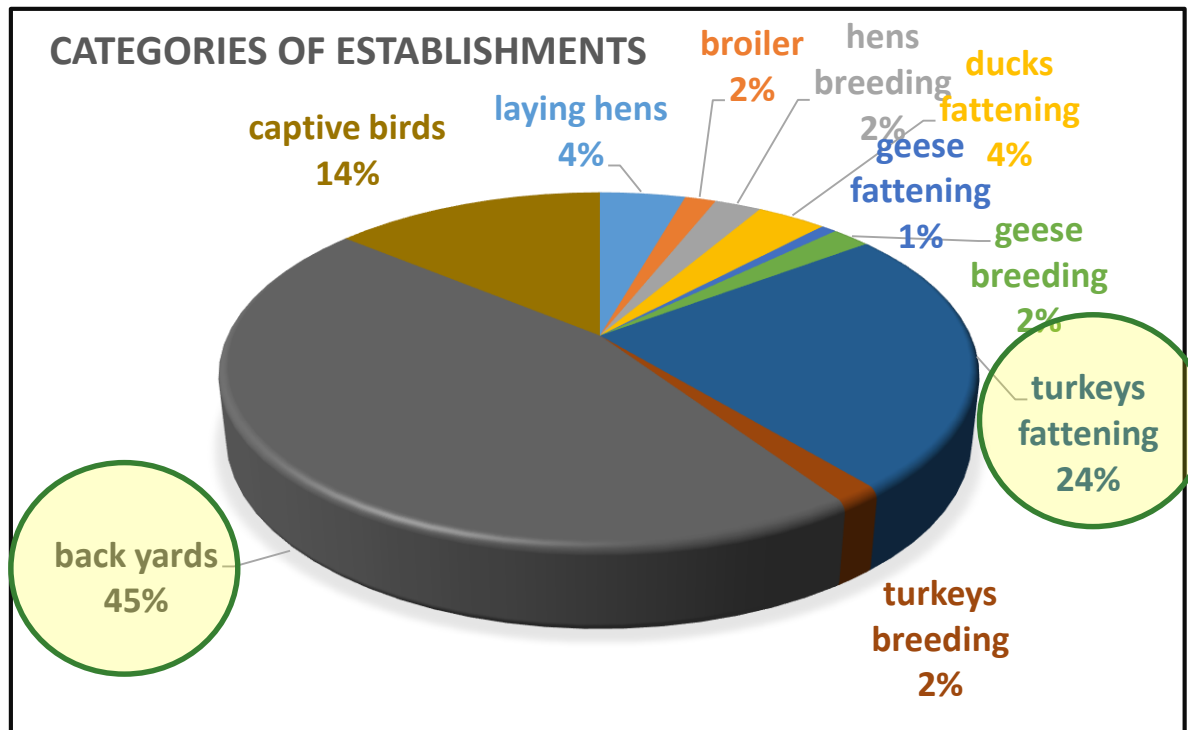
Situation in poultry and captive birds non-poultry 30.10.2020 – 22/4/2021

HPAI cases in poultry and captive birds non-poultry

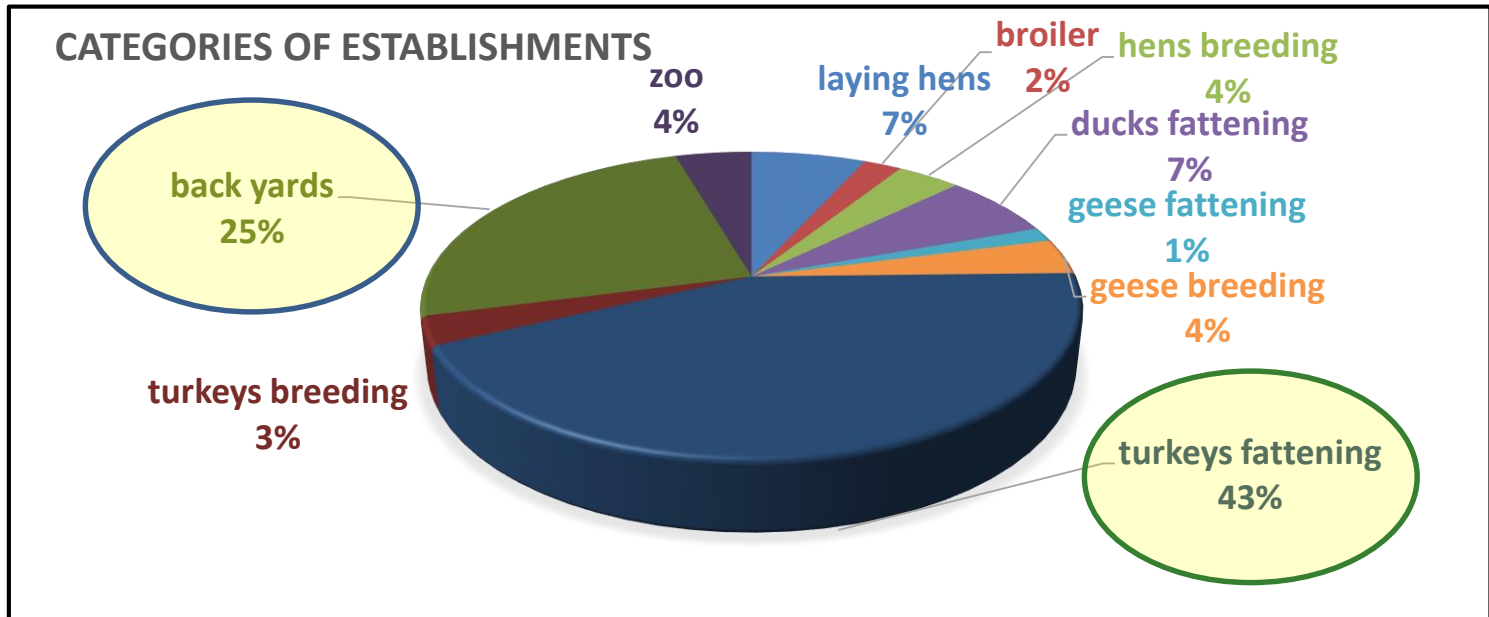


mostly
back yards

Categories of establishments Including the “back yard” event



Categories of establishments Without the “back yard event”

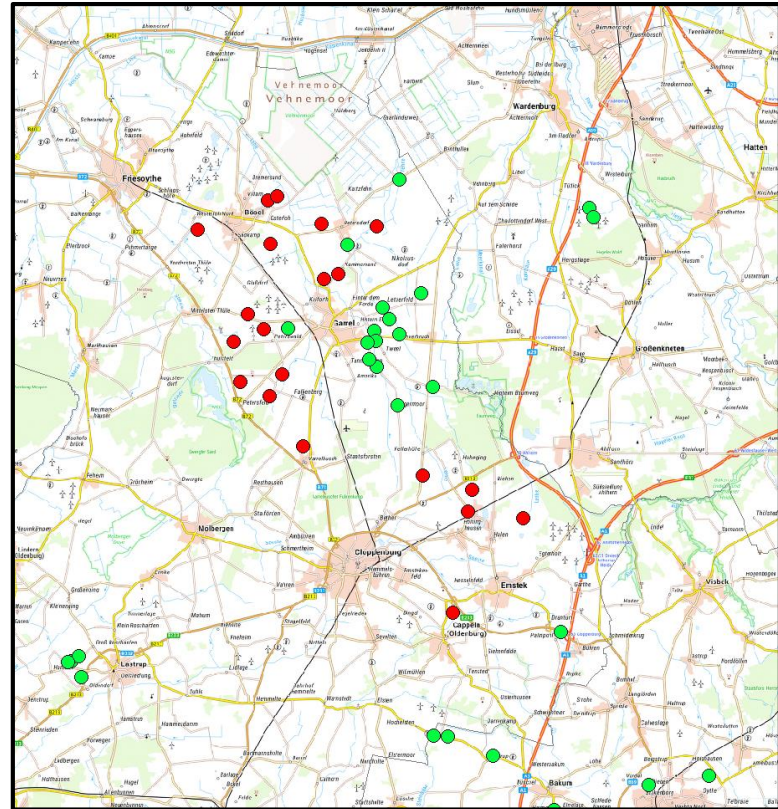


- Still open question as regards the risk:
stables with large open parts protected against wild
birds by blinds or nets.



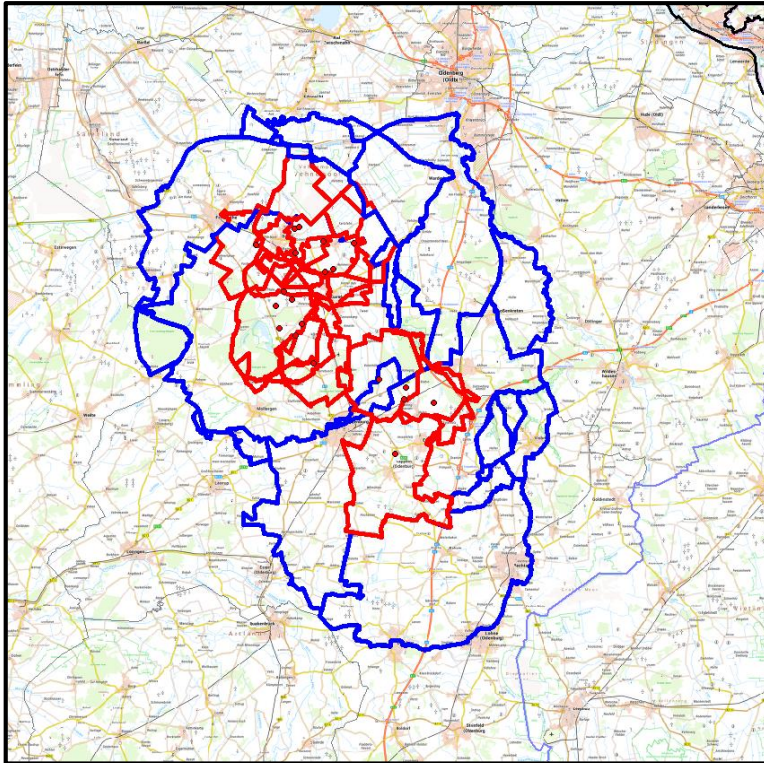
Cluster in Lower Saxony

- Last outbreak confirmed on 24/03/2021
- Restricted zones will be in force longer than 30 days
- Restricted zones will be lifted depending on the risk assessment regarding the infection pressure from the wild bird population
- The genome sequencing revealed that the virus of the two clusters in Garrel, the one from December-January and the one from February-March, are different.

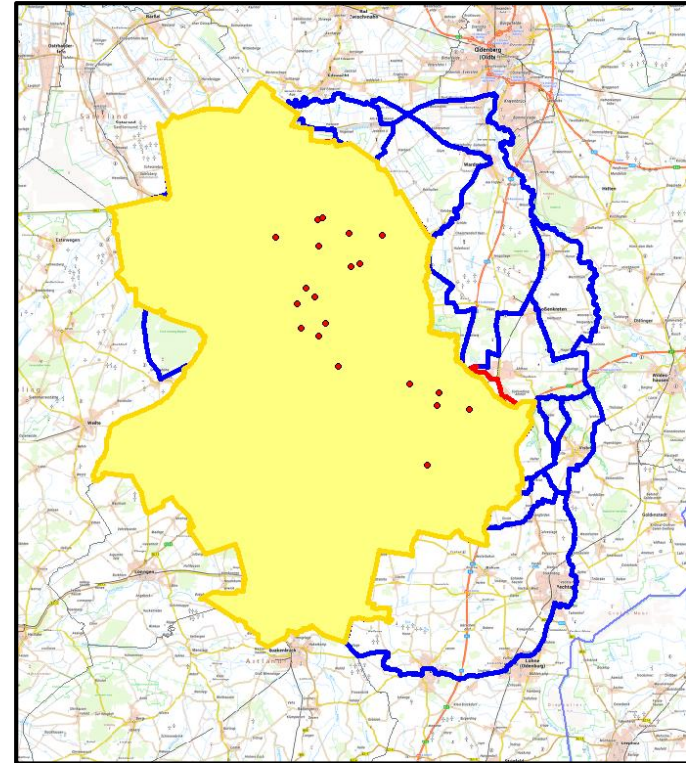


Cluster in Lower Saxony

Restricted zones



Red: protection zones
Blue: surveillance zones



Yellow: Zone with prohibition of repopulation of turkeys



Current relevant movements

I. Movements from HPAI surveillance zones:

Poultry for slaughter mainly broiler:

1. From DK and CH to DE.
2. From DE to NL.

Collegial and constructive approach to agree on common criteria for the mutual authorisation of derogations between

- **NL - DE** and
- **CH - DE**

Much appreciated! Thank you!

II. Movements of day-old ducks from CZ from a HPAI contact hatchery to DE

- 10 consignments dispatched to:

Baden-Württemberg, Bavaria and Brandenburg.

- The ducks have been examined clinically and tested twice with **NEGATIVE** results.

Movement of day-old chicks from HPAI surveillance zones in another MS

Regulation (EU) 2020/687, Art. 46

Day-old chicks movements only to establishments in the same MS

Challenge: certain establishments e.g. in NL-DE and PL-DE are closely interconnected as regards their activities.

The establishments need the special day-old chicks from the other MS.

It would be important to work out derogations at least for day-old chicks resulted from hatching eggs originated from establishments situated outside of the restricted zones.

Summary

1. Virus still exist in the wild bird population. However, it seams that the infection pressure is lower in some regions.
2. The several outbreaks in Germany, the cluster in Lower Saxony and the special event in the back yard holdings helped the veterinary administration to practice the application of the contingency plan on the spot.
3. “Lessons learned” meetings will follow in order to improve the prevention of such events and the capacity of response.
4. The control measures and in particularly the trade restrictions caused high economical damages to this agriculture sector.
5. For DE: event 2020-2021 tougher than the one of 2016-2017.



Thank you for your attention!