

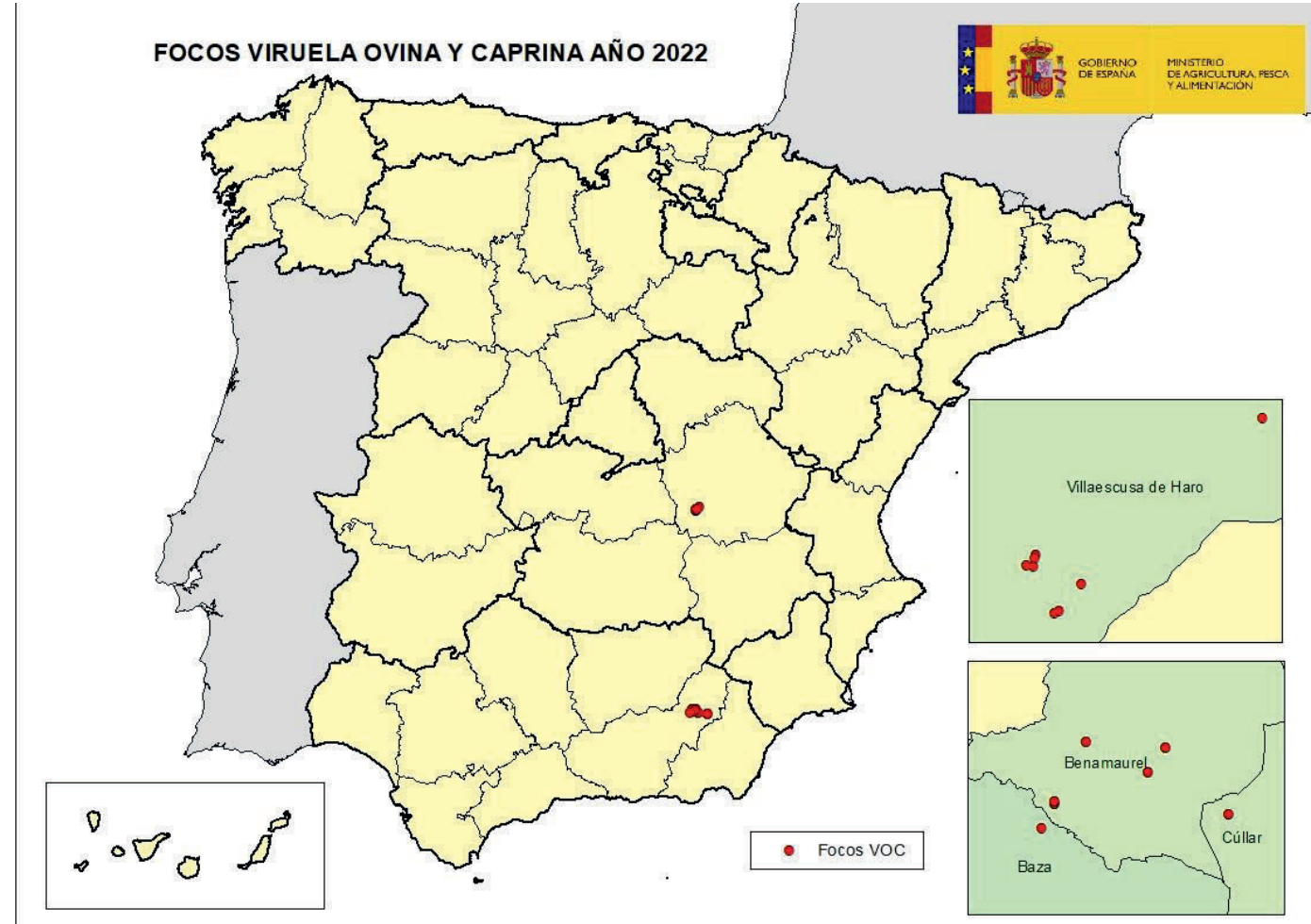
# SGPV situation in Spain and control measures



**M<sup>a</sup> Carmen González Martín**  
**PAFF Committee Meeting; 21/10/2022**

# Situation of SGPV in Spain up to date

- **Detection of SPV in Spain** after more than 50 years since eradication.
- **At the moment 17 confirmed outbreaks:** five in Municipality Benamaurel (Granada; 2022/1, 5, 10, 11 & 12), three in Cúllar (Granada; 2022/2, 13 & 14), one in Baza (2022/17), and eight outbreaks in Villaescusa de Haro (Cuenca; 2022/3, 4, 6-9, 15 & 16).



# Outbreak 2022/1: Chronology and description of the outbreak

- **15<sup>th</sup> September 2022:** MAPA receives from OVS of Andalucía (south Spain) a communication of the detection of unusual skin lesions on a sheep holding in the municipality of Benamaurel, in the province of Granada.
- **The lesions are compatible with Sheep and Goat Poxvirus (SP/GTPV) and the case is dealt with urgently.**
- **It is a breeding sheep holding for meat production** with a census of **314 sheep and 11 goats**. It is a holding with extensive production system where animals graze in own pastures.
- **On the 16<sup>th</sup> in the morning, before having the results and due to the seriousness of the suspicion, MAPA organized a meeting with all Regional OVS** to inform and highlight the importance of enhancing awareness and biosecurity in the whole country.



*Map: location of the suspect farm in Granada*

# Outbreak 2022/1: Laboratory analysis and results

16/09/2022

First results from the NRL Algete

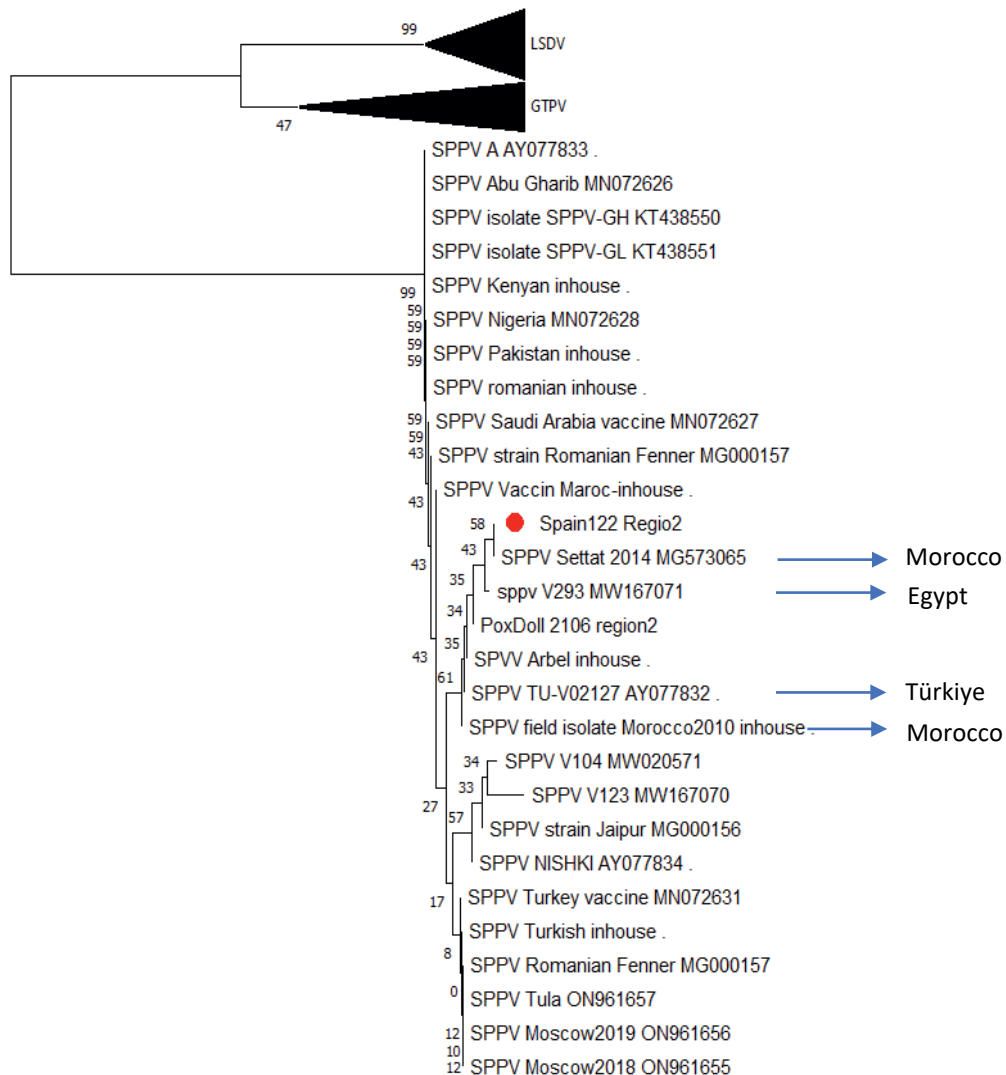
**Positive results to generic RT-PCR, able to detect SP/GTPV, in 27,8% samples of whole blood (27/60) and 100% samples of tissues (27/27).**

**Positive results to ELISA in 42% serum samples (24/60 serums).**

TYPE OF SAMPLE	METHOD	Nº ANALYSED	POSITIVE RESULT	NEGATIVE RESULT	INCONCLUSIVE RESULT
SERUM	drELISA	60	24	36	0
BLOOD EDTA	qPCR (Bowden 2008)	60	13	33	14
SKIN LESION	qPCR (Bowden 2008)	27	27	0	0

Based on recommendations of experts from other MMSS, it was decided to take **saliva swabs** samples from outbreak 2022/3 on, due to **increased capacity of detection** of the virus in these samples.


# Outbreak 2022/1: Laboratory analysis and results




- 16/09/2022: identification by specific PCR of sheep pox virus strain. On 19/09/22, sequencing analysis determines it is a field strain (not vaccine strain).
- 19/09/2022: notification of the outbreak by CA of Andalucía via RASVE (national database) to central level and from central level to ADIS (EU) and WAHIS (WOAH).
- Samples are sent to EURL (Sciensano) for sequencing → lineage close to isolates from Morocco (circulating virus in 2014), Egypt (2018) and Turkey (1970) being a frame of genome very stable on these years of virus circulation.

# Summary of outbreaks notified to date

OUTBREAK	AACC	PROVINCE	MUNICIPALITY	PRODUCTIVE PROFILE	CENSUS
2022/1	Andalucía	Granada	Benamaurel	Breeding for meat production	314 sheep 11 goats
2022/2	Andalucía	Granada	Cúllar	Breeding for meat production	170 sheep 20 goats
2022/3	Castilla - La Mancha	Cuenca	Villaescusa de Haro	Assembly center	890 sheep
2022/4	Castilla - La Mancha	Cuenca	Villaescusa de Haro	Breeding for milk production	7.654 sheep
2022/5	Andalucía	Granada	Benamaurel	Breeding for meat production	340 sheep 12 goats
2022/6	Castilla - La Mancha	Cuenca	Villaescusa de Haro	Fattening	227 sheep
2022/7	Castilla - La Mancha	Cuenca	Villaescusa de Haro	Fattening	1.877 sheep
2022/8	Castilla - La Mancha	Cuenca	Villaescusa de Haro	Assembly center	5.075 sheep
2022/9	Castilla - La Mancha	Cuenca	Villaescusa de Haro	Breeding for milk production	591 sheep
2022/10	Andalucía	Granada	Benamaurel	Breeding for meat production	110 sheep 6 goats
2022/11	Andalucía	Granada	Benamaurel	Breeding for meat production	79 sheep 6 goats
2022/12	Andalucía	Granada	Benamaurel	Breeding for meat production	639 sheep 20 goats
2022/13	Andalucía	Granada	Cúllar	Breeding for meat production	192 sheep 9 goats
2022/14	Andalucía	Granada	Cúllar	Breeding for meat production	42 sheep
2022/15	Castilla - La Mancha	Cuenca	Villaescusa de Haro	Breeding for milk production	7.354 sheep
2022/16	Castilla - La Mancha	Cuenca	Villaescusa de Haro	Fattening	3.591 sheep
2022/17	Andalucía	Granada	Baza	Breeding for meat production	373 sheep

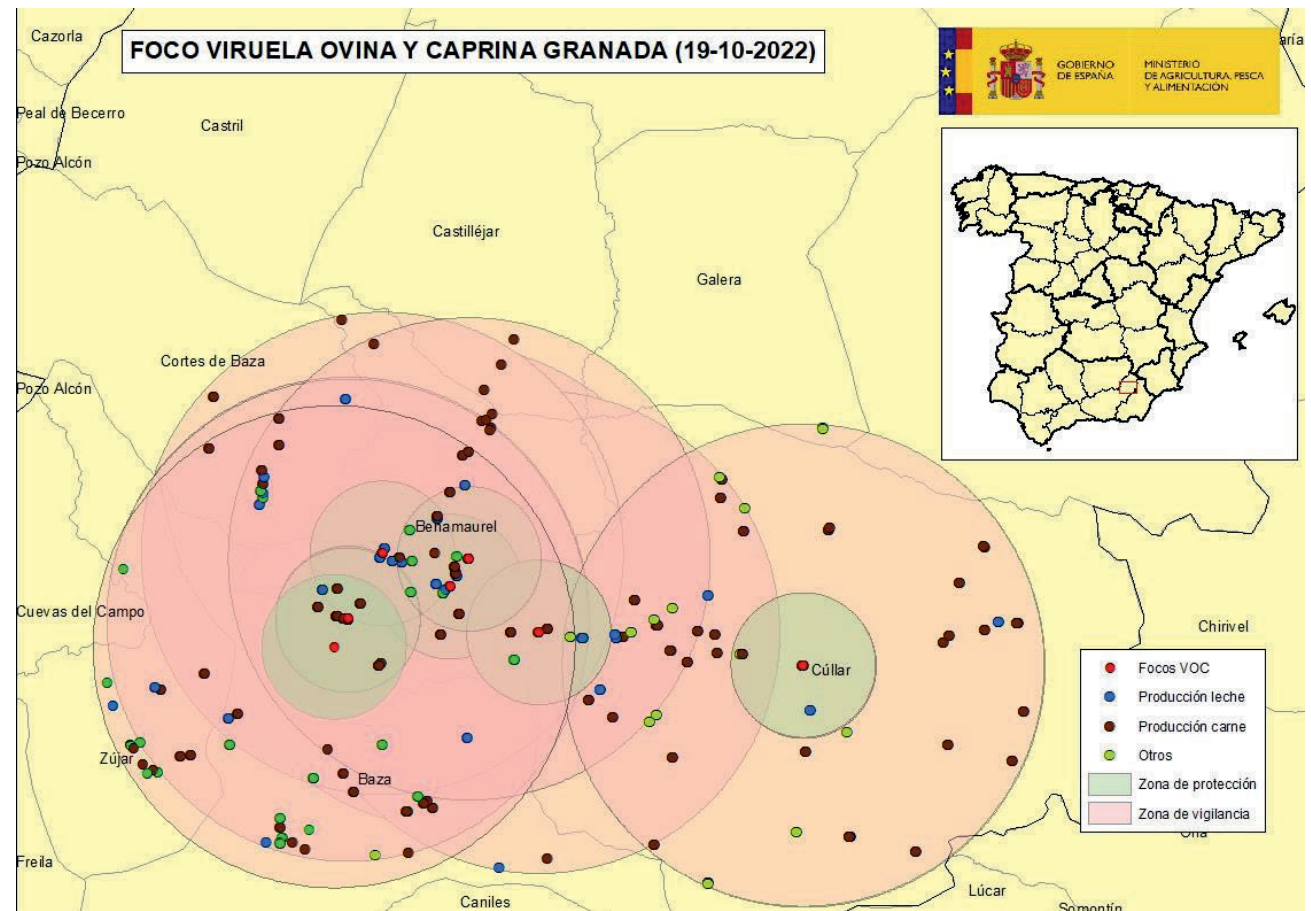
 Outbreaks communicated on last PAFF Committee (27/09)

 New outbreaks notified since then

# Summary of outbreaks in Granada Province

- In total, 17 outbreaks have been reported to date in Spain, of which **9 outbreaks** are in the province of Granada, in the municipalities of **Benamaurel (5)**, **Cúllar (3)** and **Baza (1)**.
- All of them are **breeding farms for meat production**.
- Total census of animals in the 9 affected holdings: **1.886 sheep** and **84 goats**
- Total census of farms in the RRZZ: **200 farms** (45 in the PZ 3km and 155 in the SZ 10km) and **108.924 animals**

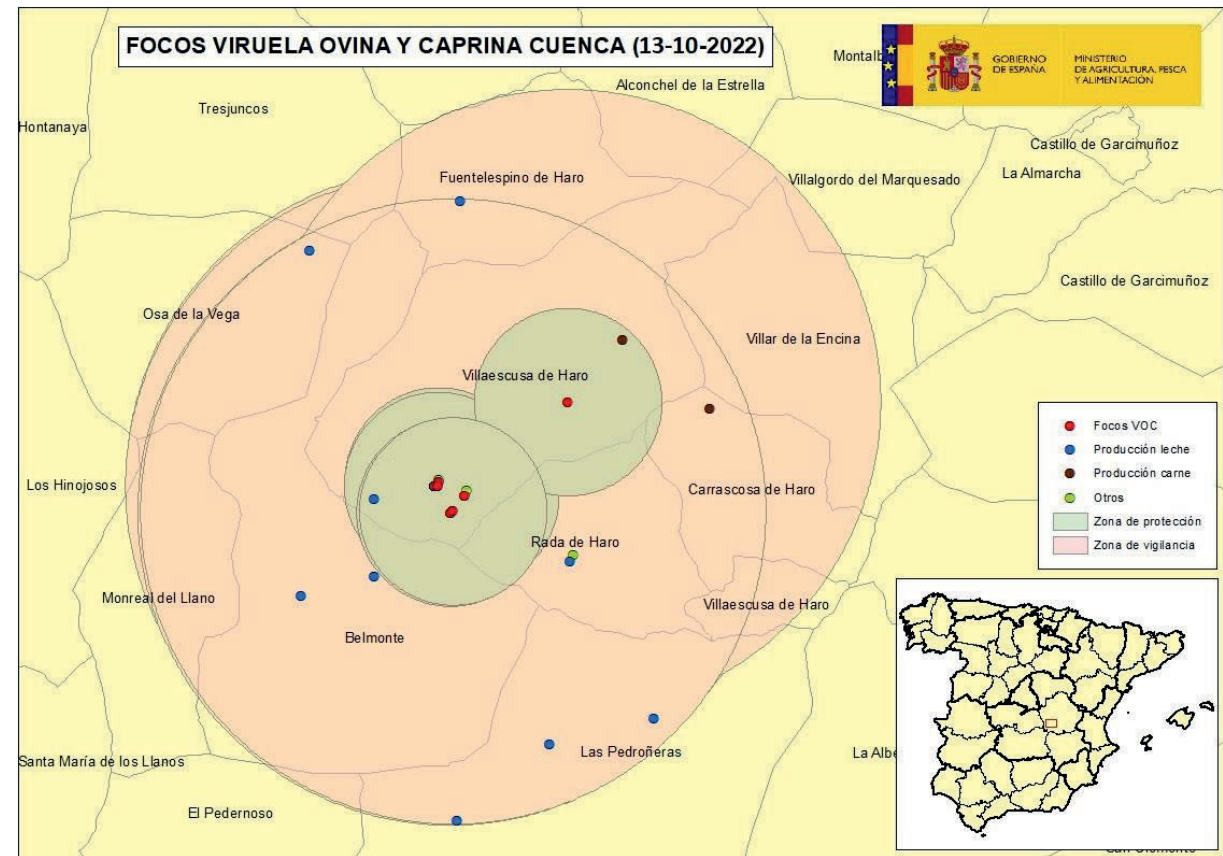
OUTBR.	MUNICIPALITY	PRODUCTIVE PROFILE	CENSUS
2022/1	Benamaurel	Meat production	314 sheep 11 goats
2022/2	Cúllar	Meat production	170 sheep 20 goats
2022/5	Benamaurel	Meat production	340 sheep 12 goats
2022/10	Benamaurel	Meat production	110 sheep 6 goats
2022/11	Benamaurel	Meat production	79 sheep 6 goats
2022/12	Benamaurel	Meat production	639 sheep 20 goats
2022/13	Cúllar	Meat production	192 sheep 9 goats
2022/14	Cúllar	Meat production	42 sheep
2022/17	Baza	Meat production	373 sheep



# Summary of outbreaks in Cuenca

- In total, 17 outbreaks reported to date, of which **8 outbreaks in the province of Cuenca**, in the municipality of **Villaescusa de Haro**. Total census of **27.529 sheep**.
- **Same epidemiological unit**, since most of the affected farms belong to the same owner and share veterinarians, personnel, machinery, etc.
- Three **fattening farms**, two **assembly centers** and three breeding farms for **milk production**.
- A total of **32 farms** and **41.739 animals** included on the RZ.

NO. OUTBREAK	AUTONOMOUS COMMUNITY	PROVINCE	MUNICIPALITY	PRODUCTIVE PROFILE	CENSUS
2022/3	Castilla - La Mancha	Cuenca	Villaescusa de Haro	Assembly center	890 sheep
2022/4	Castilla - La Mancha	Cuenca	Villaescusa de Haro	Reproduction for production of milk	7.654 sheep
2022/6	Castilla - La Mancha	Cuenca	Villaescusa de Haro	Fattening	227 sheep
2022/7	Castilla - La Mancha	Cuenca	Villaescusa de Haro	Fattening	1.877 sheep
2022/8	Castilla - La Mancha	Cuenca	Villaescusa de Haro	Assembly center	5.075 sheep
2022/9	Castilla - La Mancha	Cuenca	Villaescusa de Haro	Reproduction for production of milk	591 sheep
2022/15	Castilla - La Mancha	Cuenca	Villaescusa de Haro	Reproduction for production of milk	7.354 sheep
2022/16	Castilla - La Mancha	Cuenca	Villaescusa de Haro	Fattening	3.591 sheep





# Measures implemented in the Restricted Zone

## Delegated Regulation (EU) 202/687 of the Commission:

- **Census of all farms and susceptible animals** (species, categories, number of animals/establishment).
- **Restriction on the movement and official control of animal and risk products movements, including reproductive materials and ABP.**
- **Prohibition of fairs, markets, exhibitions** and other concentrations of livestock.
- **Enhanced biosecurity and passive surveillance.**
- **Commission Implementing Decision (UE) 2022/1693:** Implementation of **authorized treatments** equivalent to those for LSD established on Annex VII of D.R. (UE) 2020/687.

# Conclusions

- **17 confirmed outbreaks** so far in 2 zones epidemiologically linked most of them by animal movements.
- In the restricted area of Cuenca, 6 out of 8 outbreaks are considered actually **one epidemiological unit**. They belong to the same owner and share veterinarian, workers and machinery.
- Samples sent to the EURL (Sciensano, Belgium) for phylogenetic analysis to try to identify possible origin of the strain circulating in Spain. Some regions of the genome connect to strains from North African origin.
- OVS of Andalucía and C. La Mancha are making a great effort **visiting immediately all holdings located within and outside the RZs** (all affected, suspect and risk-contact farms).
- Origin of the virus remains unknown at the moment, investigations keep ongoing.
- **No risk movement identified to other member states.**



**THANK YOU VERY MUCH  
FOR YOUR ATTENTION**