

Highly pathogenic avian influenza H5N1 in Sweden



Swedish Board of Agriculture 23 January 2024

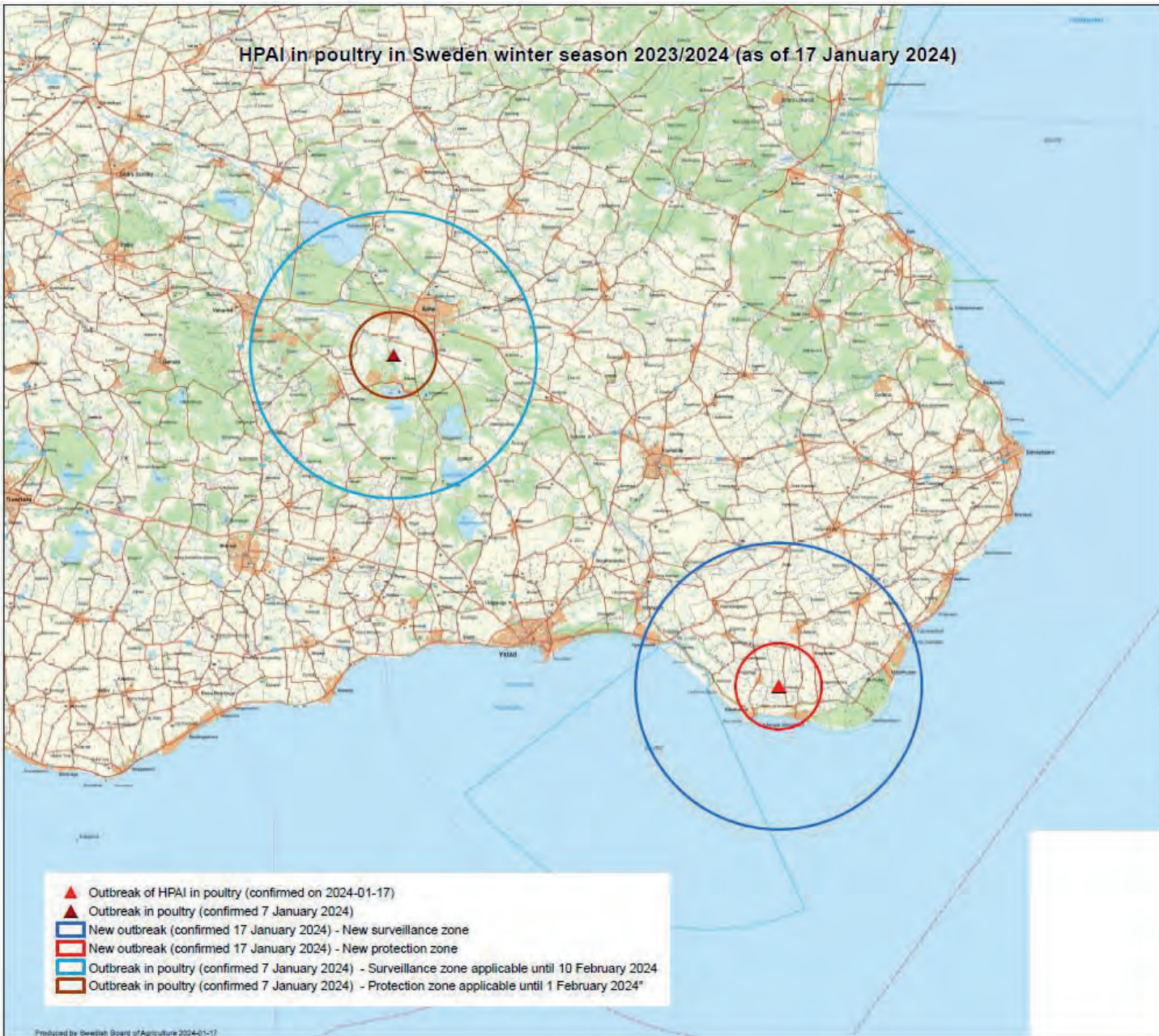


Location and affected establishments

- These are the first and second outbreaks of HPAI – both subtype H5N1 - in poultry in Sweden this winter season
- Location: Both cases in Skåne in the south of Sweden
- Blentarp, in the municipality of Sjöbo (SE-HPAI(P)-2024-00001): an establishment with 47938 animals that rears broiler parent flocks
- Löderup, in the municipality of Ystad (SE-HPAI(P)-2024-00002): an establishment with 4410 turkeys for meat production



HPAI in poultry in Sweden winter season 2023/2024 (as of 17 January 2024)



1:250 000
0 1 2 3 4 5
|-----|



Sjöbo Outbreak

- Increased mortality, first signs noticed 5 January
 - **Total 3 869 dead in a group of 6000 broiler parents**
- Suspicion of HPAI was reported to the SBA on 6 January and the establishment was put under restrictions
- Diagnosis confirmed by SVA as H5N1 with real-time PCR 7 January
- Whole genome sequencing results:
Clade 2.3.4.4b, Genotype AB



Sjöbo: Measures and information

- All remaining poultry was culled 7-8 January
- Cleaning and disinfection was completed 11 January
- All poultry and animal products were disposed of by official destruction
- All necessary measures in accordance with Regulation (EU) 2016/429 and 2020/687 are applied:
 - 3 km protection zone and 10 km surveillance zone around the establishment
 - Protection zone: all farms with captive birds controlled by official veterinarian, no commercial establishments
 - Surveillance zone: 6 active commercial establishments, controlled by official veterinarian



Sjöbo: Measures and information

- There have not been any sales or movements of poultry or poultry products from the affected holding to other countries within the last 21 days (before the onset of clinical symptoms)
- The outbreak has been reported in ADIS and WAHIS
- The epidemiological investigation is ongoing but the source of infection is probably wild birds



Ystad Outbreak

- First clinical signs (mortality, lethargy, heavy breathing, waving heads from side to side) in the turkeys were noticed on 16 January in one of the stables
- Suspicion of HPAI was reported to the SBA on 16 January and the farm was put under restrictions
- Diagnosis confirmed by SVA as H5N1 with real-time PCR 17 January



Ystad: Measures and information

- All poultry was culled 17 January
- Cleaning and disinfection was completed 19 January
- All poultry and animal products were disposed of by official destruction
- All necessary measures in accordance with Regulation (EU) 2016/429 and 2020/687 are applied:
 - 3 km protection zone and 10 km surveillance zone established around the establishment
 - No commercial establishments in the protection zone
 - 3 commercial establishments with laying hens in the surveillance zone
 - Control of establishments in the surveillance zone by official veterinarians is ongoing



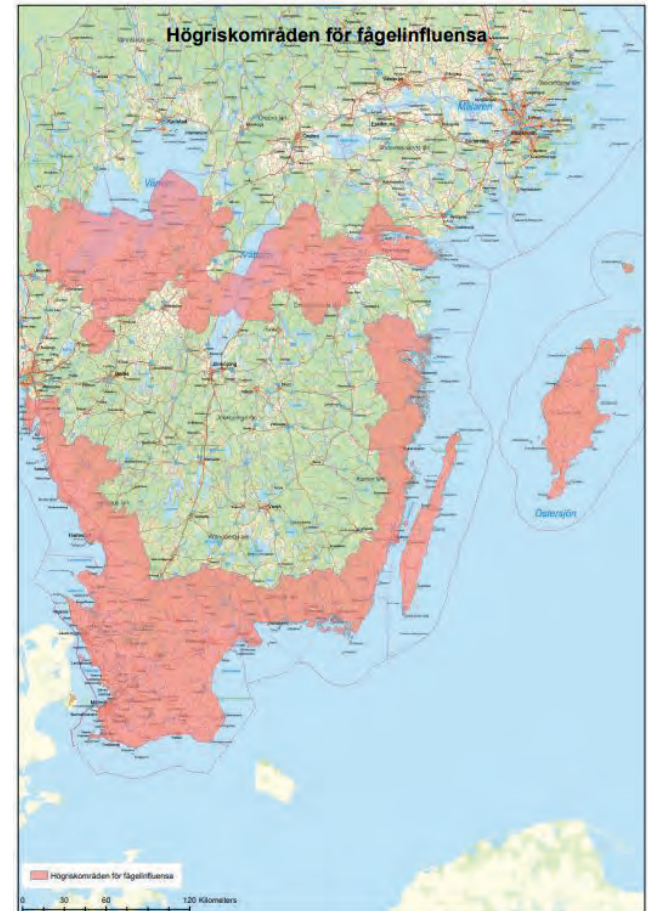
Ystad: Measures and information

- The ongoing epidemiological investigation shows no contact holdings
- There have not been any sales or movements of poultry or poultry products from the affected holding to other countries within the last 21 days (before the onset of clinical symptoms)
- The outbreak has been reported in ADIS and WAHIS
- The epidemiological investigation is ongoing but the source of infection is probably wild birds



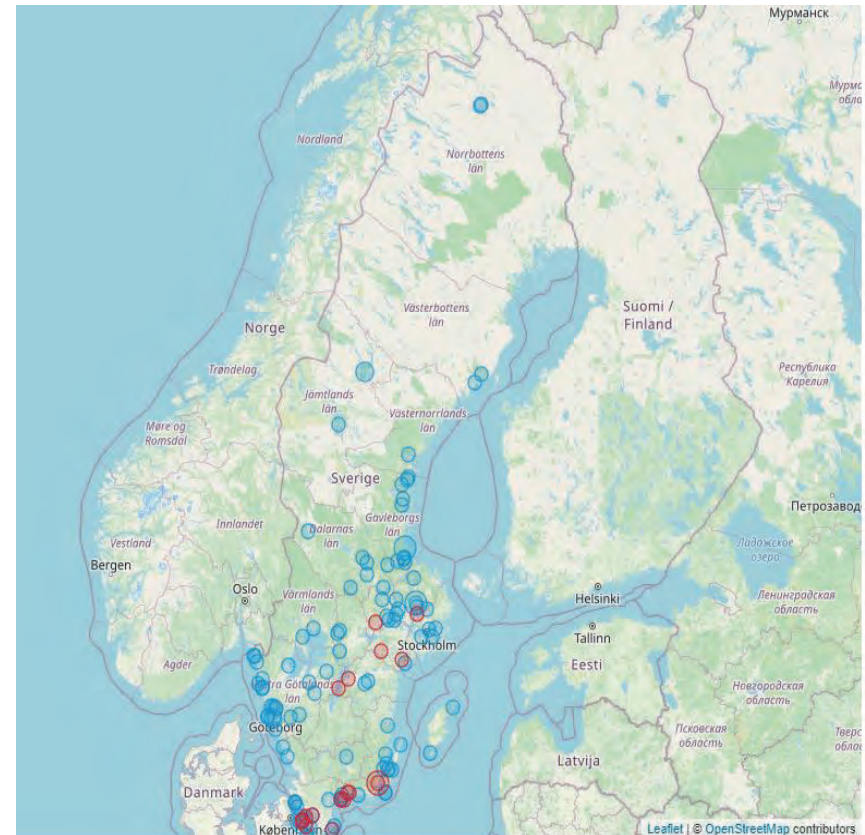
Raised biosecurity level in high-risk areas since 27 November 2023

- Since 27 November 2023 parts of southern Sweden (red areas on map), including Skåne County, have been identified as high risk areas for introduction of HPAI from wild birds to poultry.
- Therefore, special biosecurity restrictions for the high risk area have been in place and as a consequence all poultry in the area must be kept indoors.



AI surveillance in wild birds

- The general public is encouraged to send found dead wild birds to the **Swedish Veterinary Agency (SVA)**
- So far during the 2023/2024 season, 19 outbreaks in wild birds have been reported in ADIS
- Barnacle geese, *Branta leucopsis* have often been reported

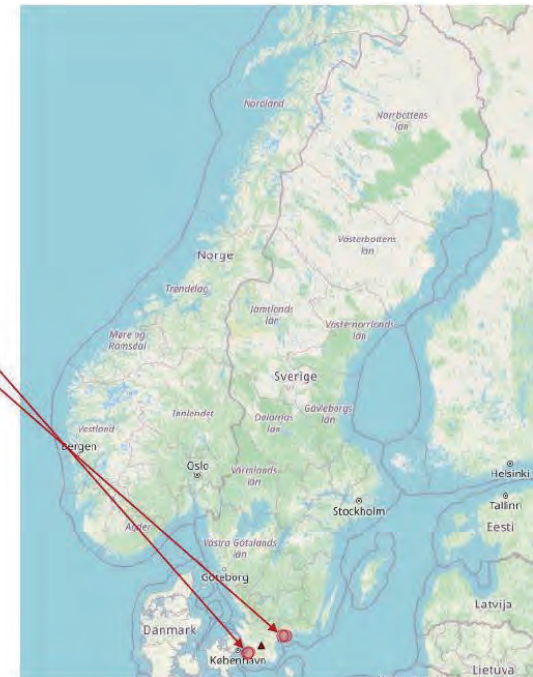
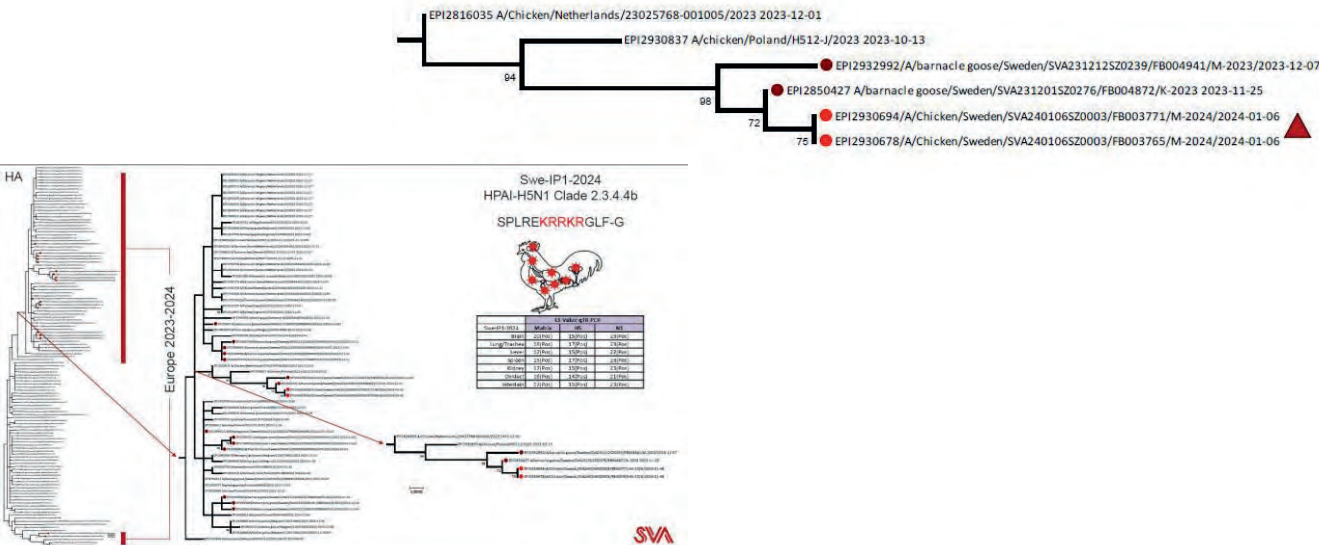


Map of Sweden showing the AI surveillance during 2023/2024. Blue circles indicate sampled birds, red indicate AI positive. Source:

<https://www.sva.se/amnesomraden/smittlage/smittlage-for-fagelinfluensa/>

Genotype

Virus from poultry in Sjöbo (Skåne) is closely related to virus from barnacle geese in Skåne and Blekinge. No signs of mammal adapted mutations have been seen over and above what already has been reported for this Clade. Genotype AB (9), DG (3) and DB(1) have been found this season (*source: Siamak Zohari, SVA*).



Thank you for your attention !

