



Food and
Veterinary Service
Republic of Latvia

African swine fever outbreak in Latvia

PAFF meeting,
Brussels, 17.01.2017.



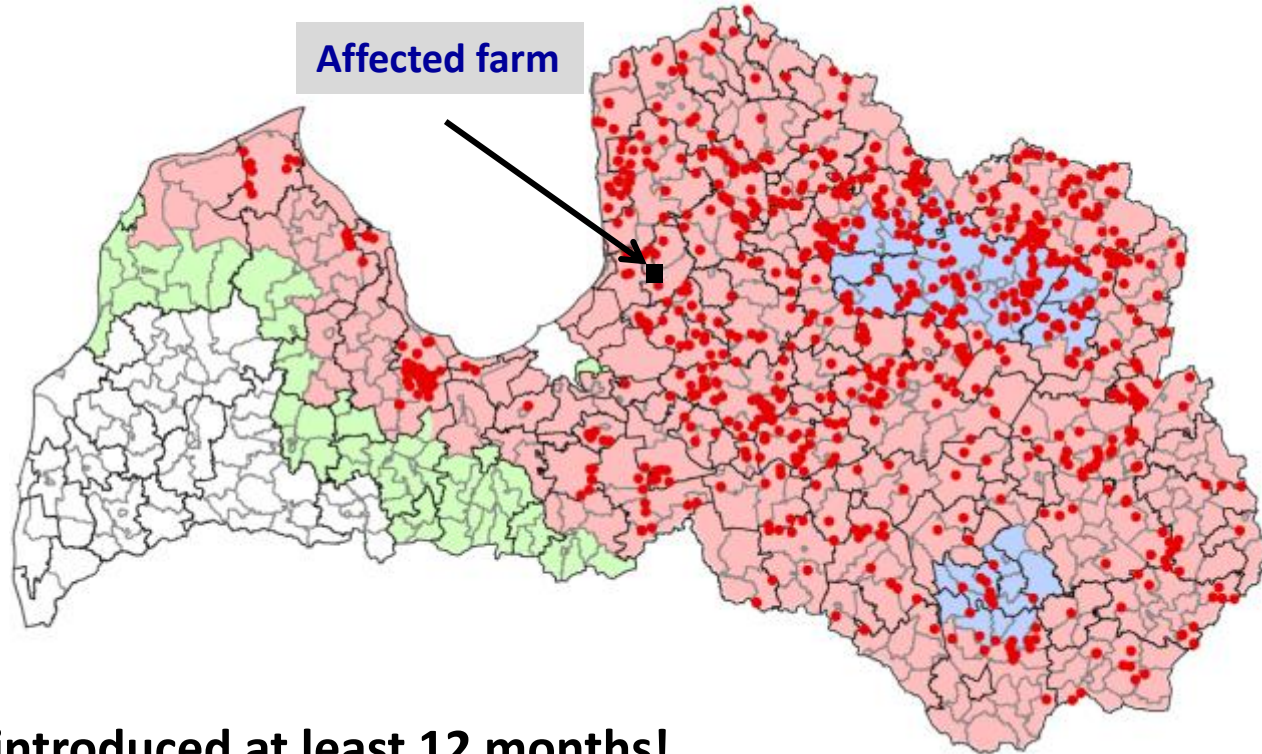
Food and
Veterinary Service
Republic of Latvia

First ASF outbreak in 2017 (13.01.2017.)

Breeding farm with:

- 2290 piglets
- 1203 gilts
- 1501 sows
- 29 boars

In total: **5023 pigs**



! No live pigs have been introduced at least 12 months!

Location: Farm in the territory already defined as **Part II** by Decision 2014/709/EU

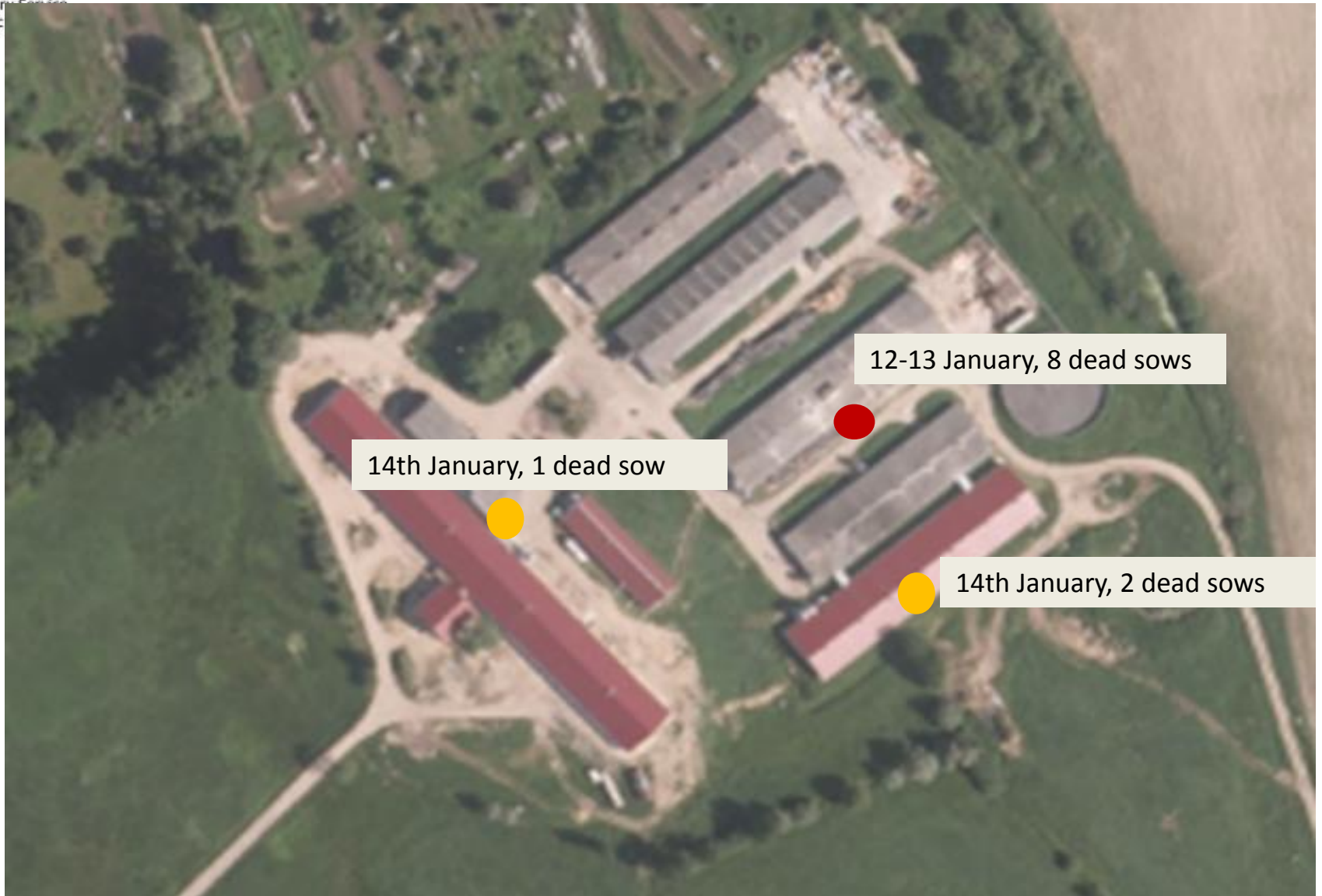


Time line of the outbreak

- **Suspicion** notified by the farm veterinarian – **on 13.01.2017.**
 - January 12-13th several sows with clinical signs – loss of appetite, lethargy, abortion and increased mortality (8 sows found dead)
 - Clinical investigation were carried out (temperature 37-38C)
 - Official veterinarian carried out autopsy (mostly unspecific lesions)
 - Samples were taken (according to ASF Diagnostic manual) for laboratory testing
- Laboratory **confirmation** (RT-PCR positive results to ASF) - late evening 13.01.2017.
- Immediate tracing of pig consignments and movements



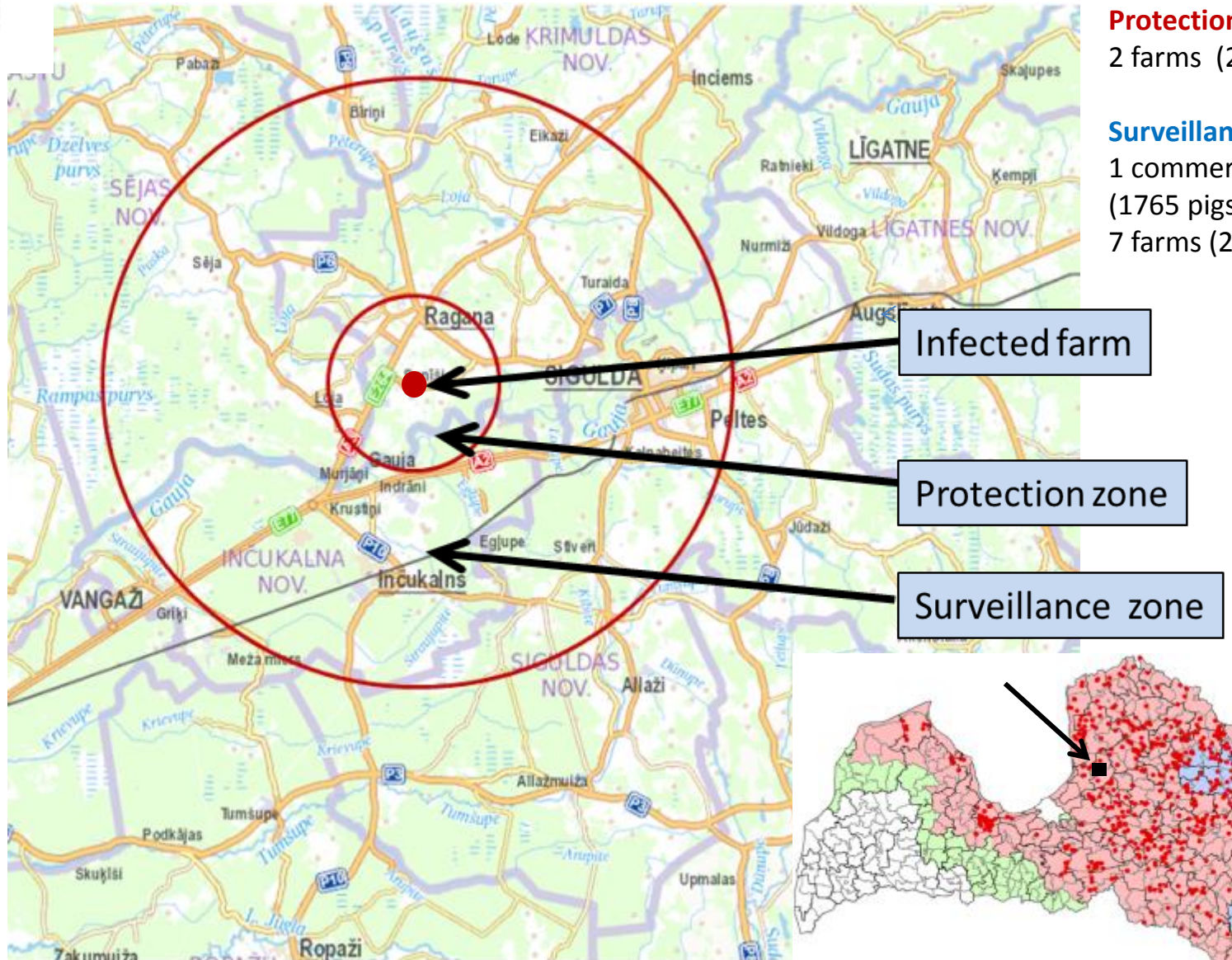
Outline of the affected farm





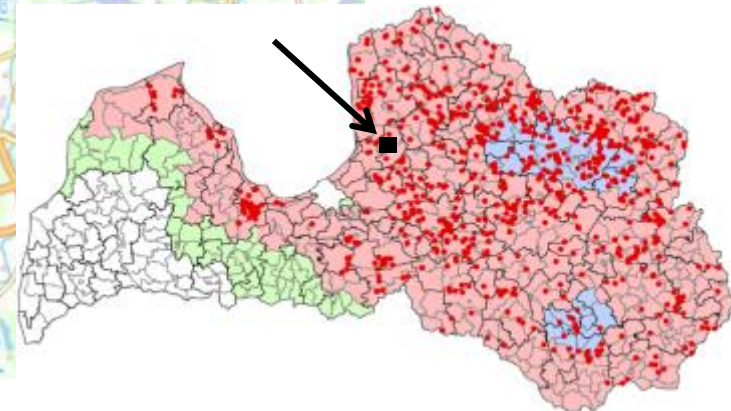
Food and
Veterinary Service
Republic of Latvia

Measures in place: Protection and Surveillance zones established



Protection zone:
2 farms (26 pigs);

Surveillance zone:
1 commercial farm
(1765 pigs)
7 farms (20 pigs)





Food and
Veterinary Service
Republic of Latvia

Contact farm

Fattening farm (integrated slaughterhouse) – belongs to the same holder

Located ~ 50km South from breeding farm

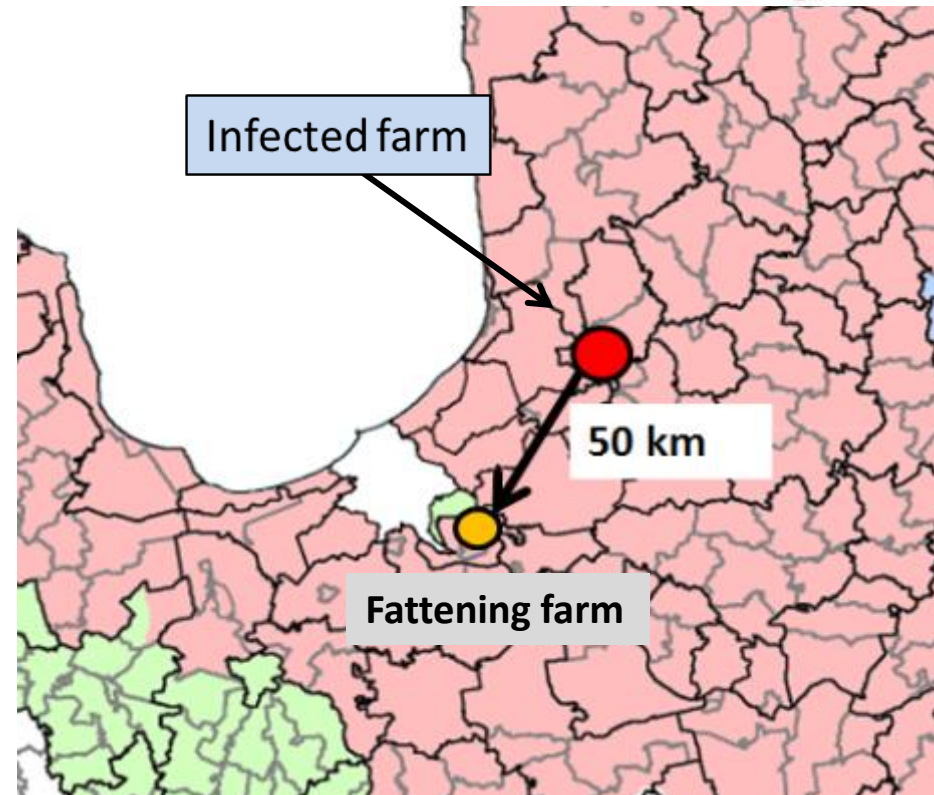
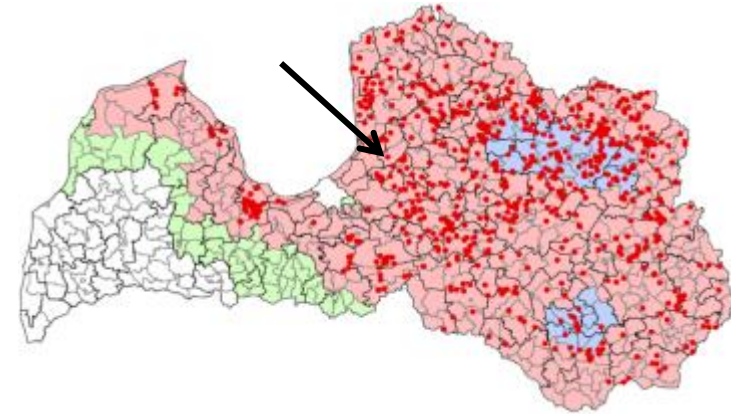
In total ~ 11 000 fattening pigs

Regular transport
of piglets from breeding farm

Biosecurity level: last check in August 2016 (all rules respected)

Sampling on fattening farm was performed between **14.01.2017. and 16.01.2017. with negative results**

No any increased mortality or clinical suspicion in the fattening farm observed
Contact farm still under standstill.



Measures in place

Measures according the Council Directive 2002/60/EC are in force:

- Movement restrictions imposed immediately (January 13th);
- Killing & disposing of all pigs started on 14.01.2017.
- Tracing of pig consignments and movements
- Epidemiological investigation is in process
- Inspections in farms located in protection and surveillance zones

Epidemiological investigation: preliminary results

- Biosecurity – last check August 2016 (all rules respected)
- No live animal introduction (at least 12 months)
- Semen – last consignment November 21, 2016
- Serological results – all negative

Epidemiological investigation ongoing !



Food and
Veterinary Service
Republic of Latvia

Thank you for your attention!