

Animal Welfare: Welfur Certification and Assessment

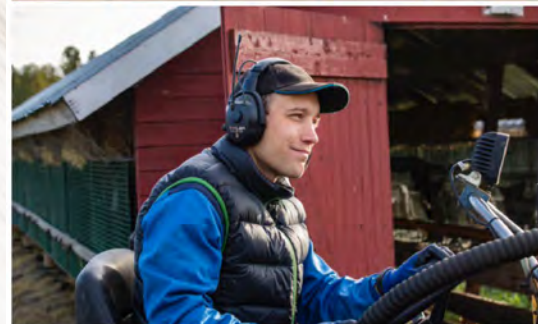
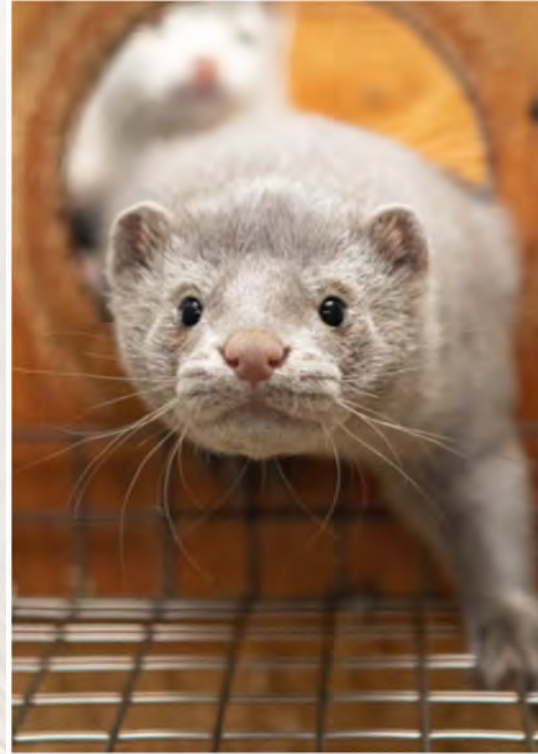
07.12.2023

Markus Sjöholm

Chairman Fur Europe

3rd generation mink and fox farmer in Finland

3rd generation mink and fox farmer



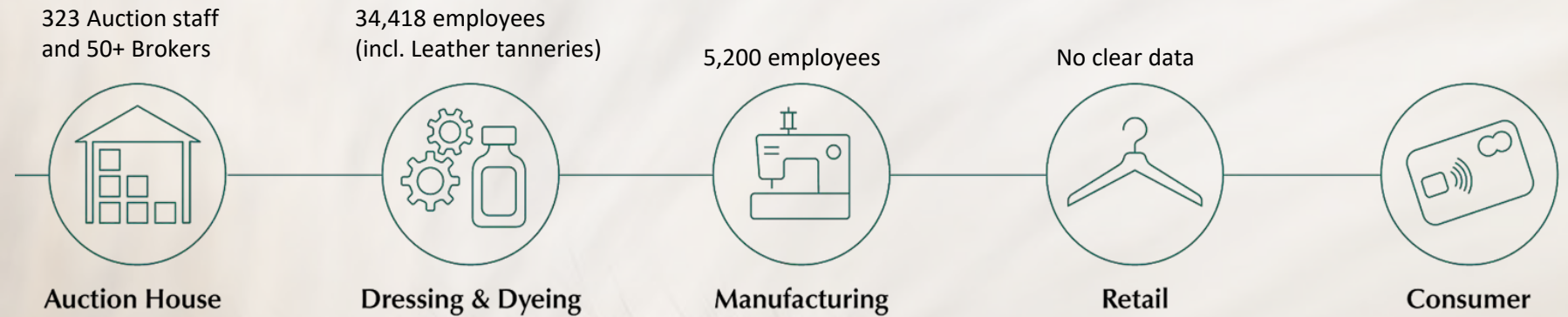
Employment in Europe

Farms: 4-6 permanent staff per farm. An additional 15-18 during the busiest part of the production cycle.

Feed Manufacturers: In Kastoria, Greece, there are 80 employees to cater for 54 farms.

Farm Machinery: 2-3 main producers in Europe.

Pelting Stations: Vary depending on size.



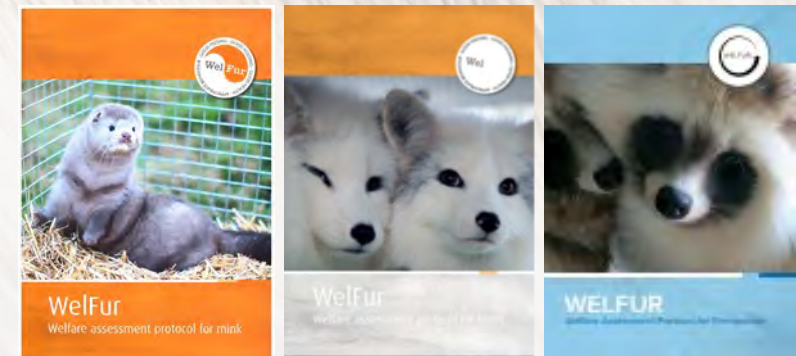
Support and push for transparency from LVMH and brands like Fendi, LV, Dior

WelFur's Scientific Basis

- 22/25 species-specific indicators
 - Based on the 4 freedoms and 12 Principles. See image.
 - American mink (*Neovison vison*)
 - Silver fox (*Vulpes vulpes*), blue fox (*Vulpes lagopus*)
 - Finn raccoon (*Nyctereutes procyonoides*)
 - indicators such as the presence of wounds, injuries or diseases, bodyweight, behaviour in presence of humans – but also resource-based and management-based indicators such as checking the water system, the manure collection system, the killing equipment, the time of handling of the animals, etc.

- Developed by 7 European universities:

University of Eastern Finland, MTT Agrifood Research Finland, Aarhus University, Norwegian University of Life Sciences, Swedish University of Agricultural Sciences, University of Utrecht, French National Institute of Agronomic research.



Injuries at farm level

American Mink

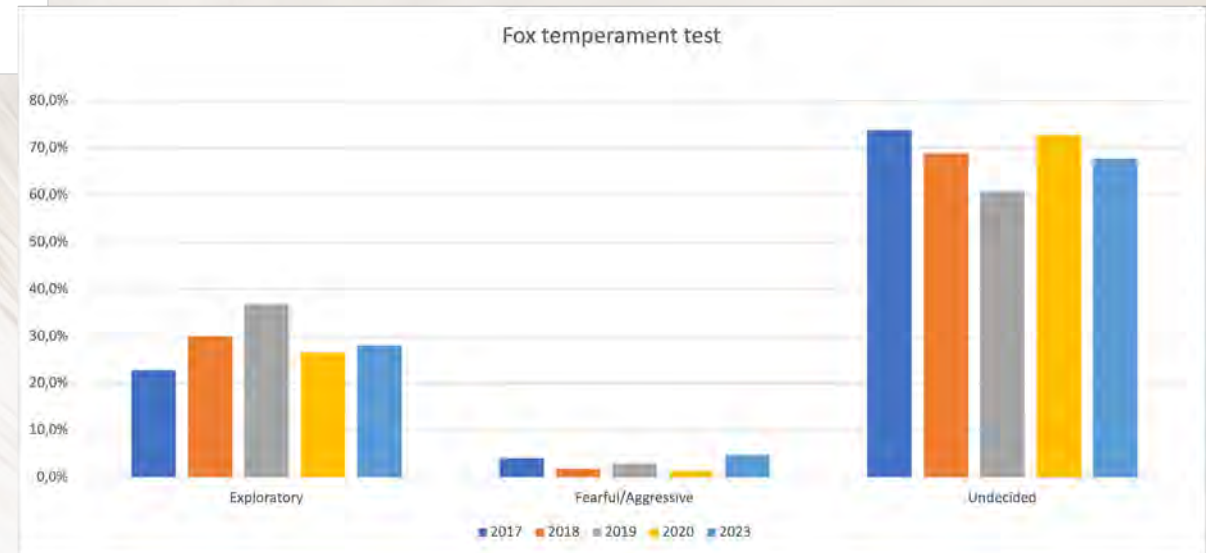
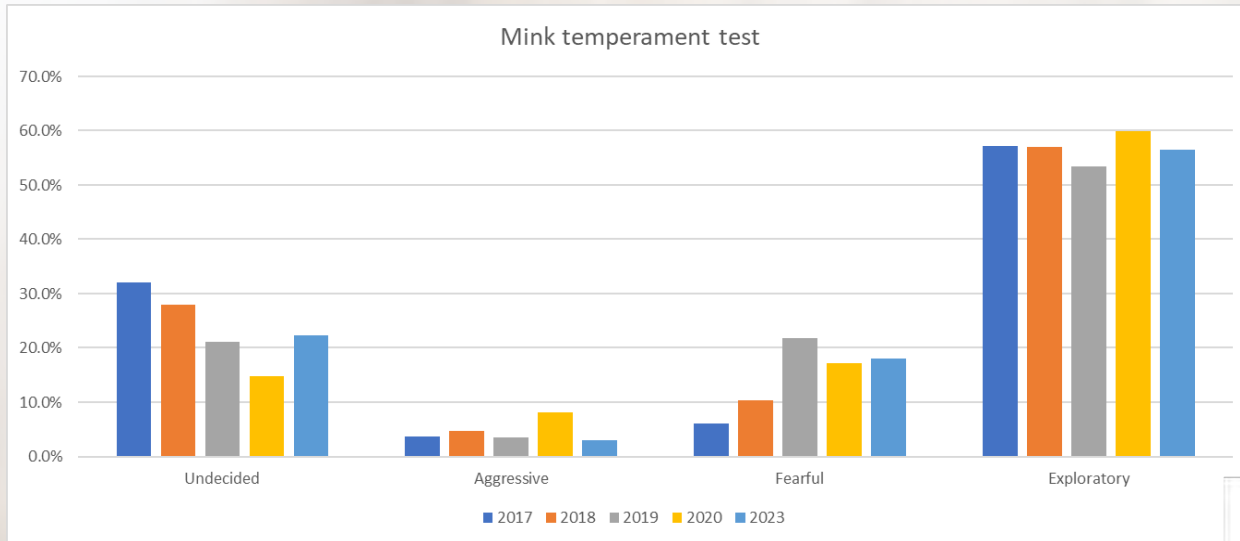
	2017-2019 AVG	2020	2023
Injuries (adult) < 10mm	0.7%	1.0%	1.2%
Injuries (adult) < 30mm	0.3%	0.3%	0.4%
Injuries (adult) > 30mm	0.1%	0.1%	• 0.1%

Fox

	2017-2019 AVG	2020	2023
Mild Fresh lesions	0.65%	0.61%	1.48%
Bleeding/Infections	0.04%	0.00%	0.07%



Temperament test is important for the farmer





Thank you!

For more information www.wearefur.com

And contact us for farm visits !