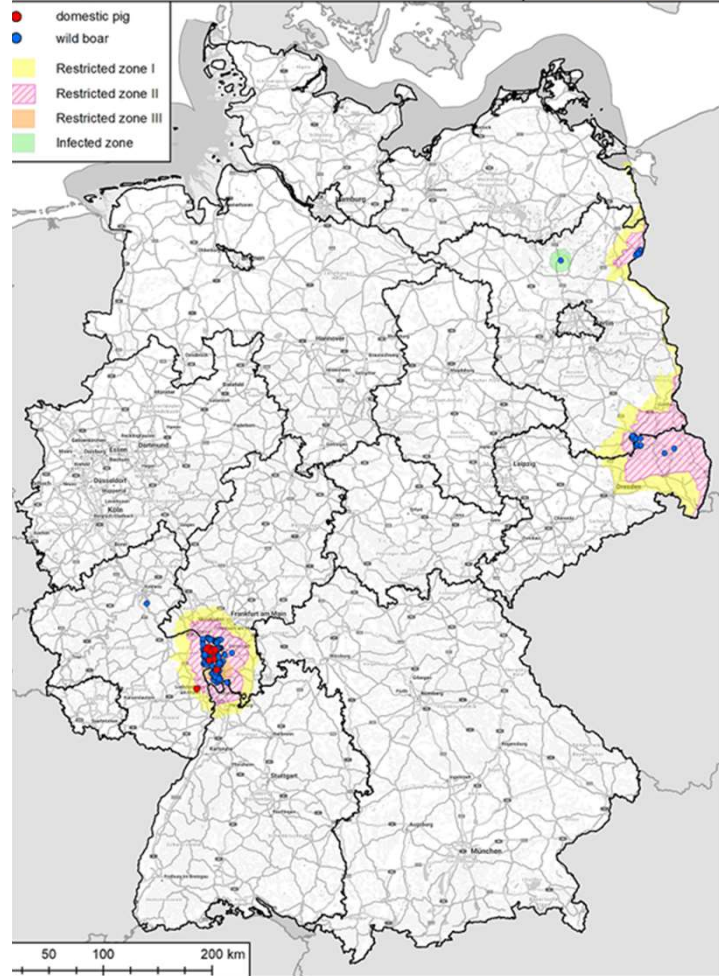


African Swine Fever in DEU

SCoPAFF December 2024

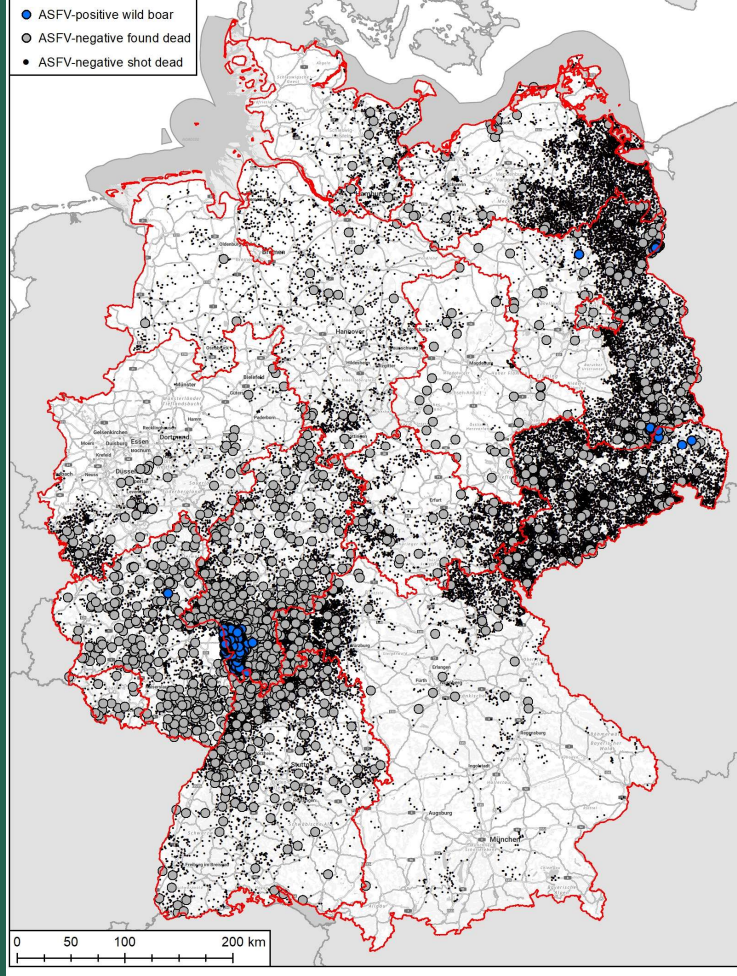
African swine fever in Brandenburg, Hesse,
Mecklenburg-Western Pomerania, Saxony and Rhineland-Palatinate
Source: TSN (Status: 10.06.2024 - 10.12.2024)



ASF in DEU – overview –

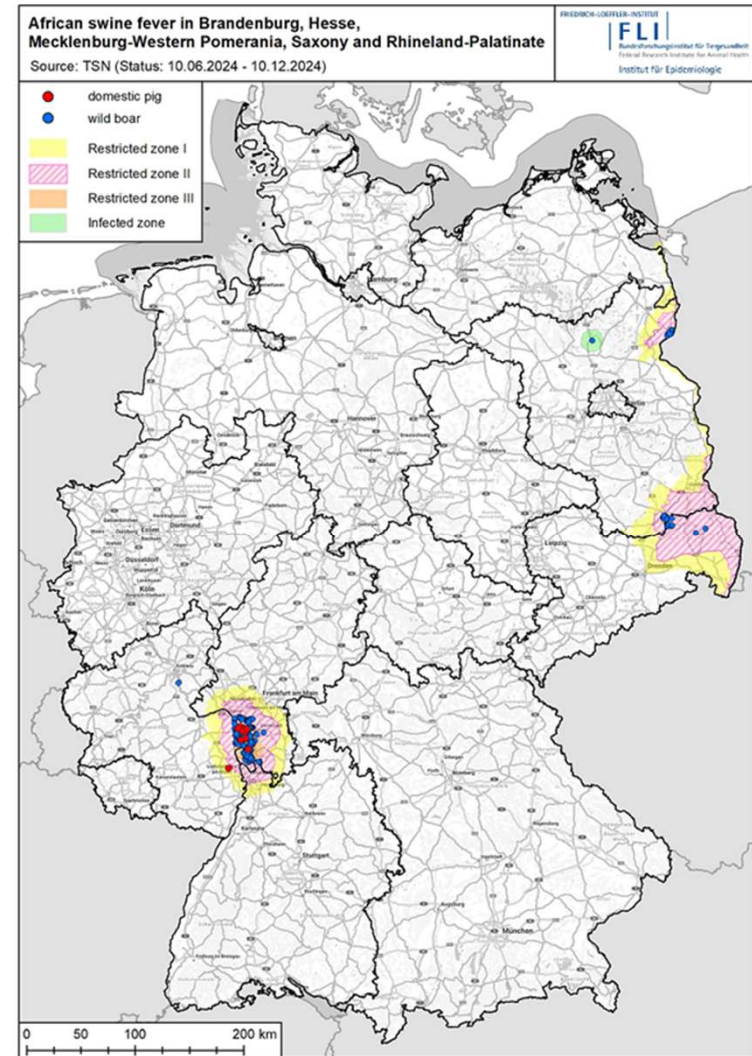
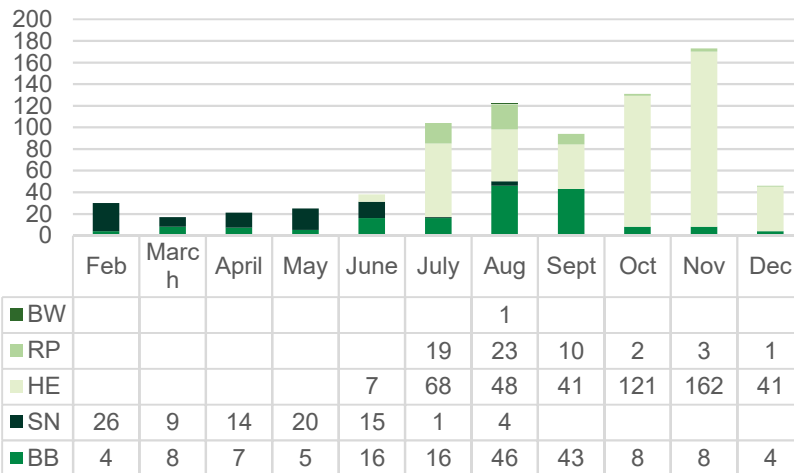
African Swine Fever active and passive surveillance in Germany

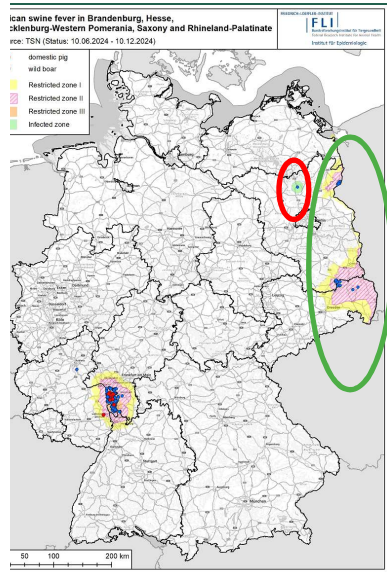
Source: TSN (Status: 10.06.2024 - 10.12.2024)



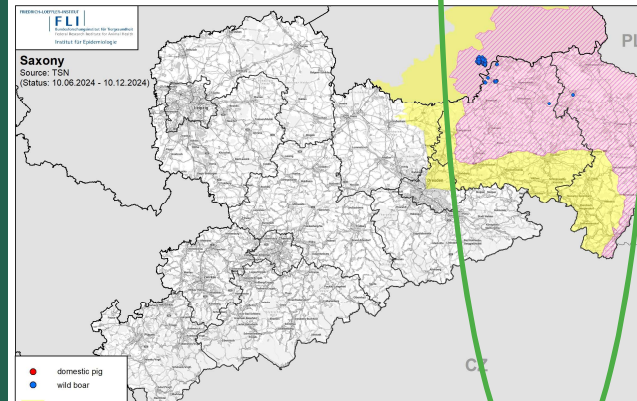
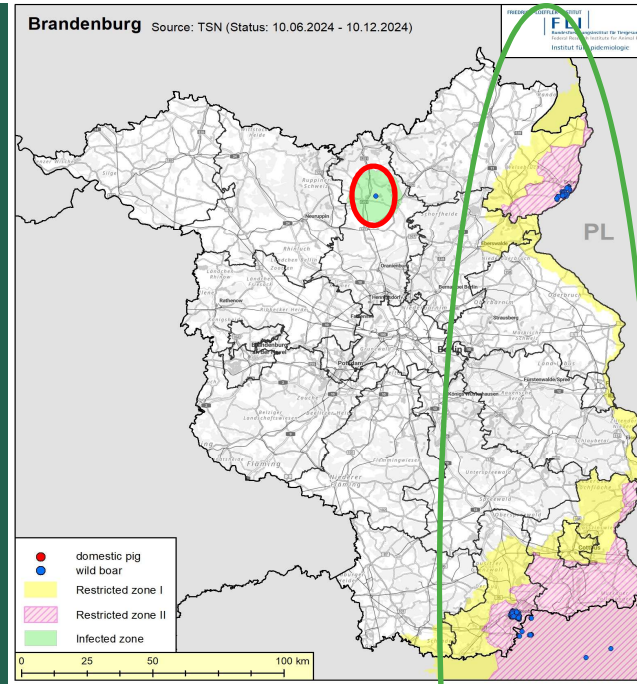
ASF in wild boar in DEU in 2024 -

813 cases on December 13th



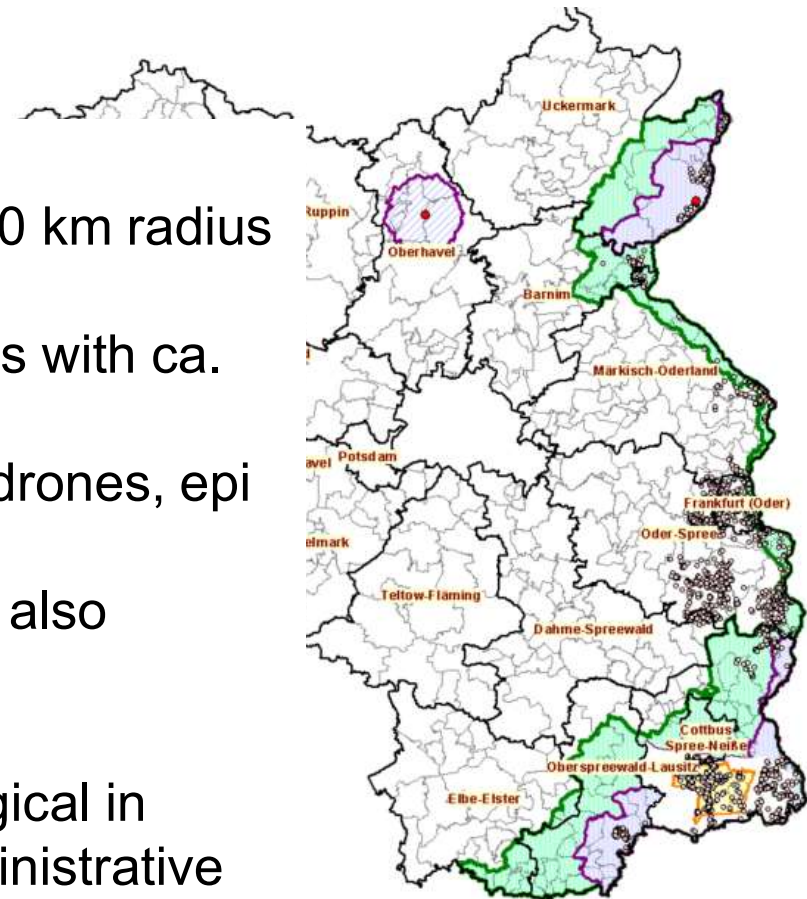


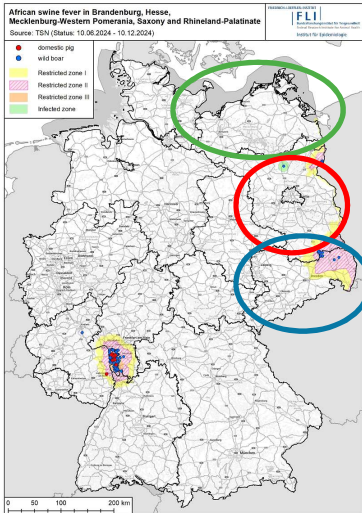
ASF in Brandenburg (BB) and Saxony (SN)



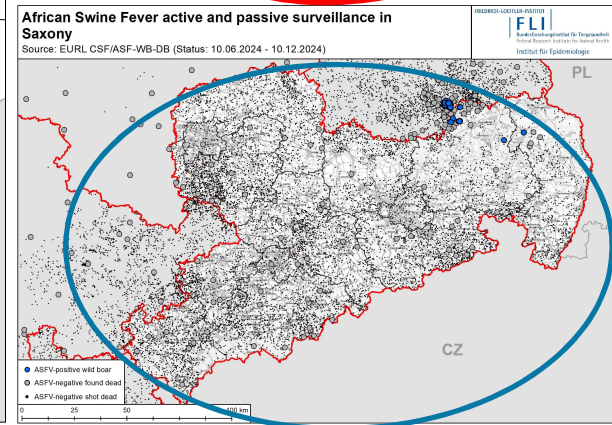
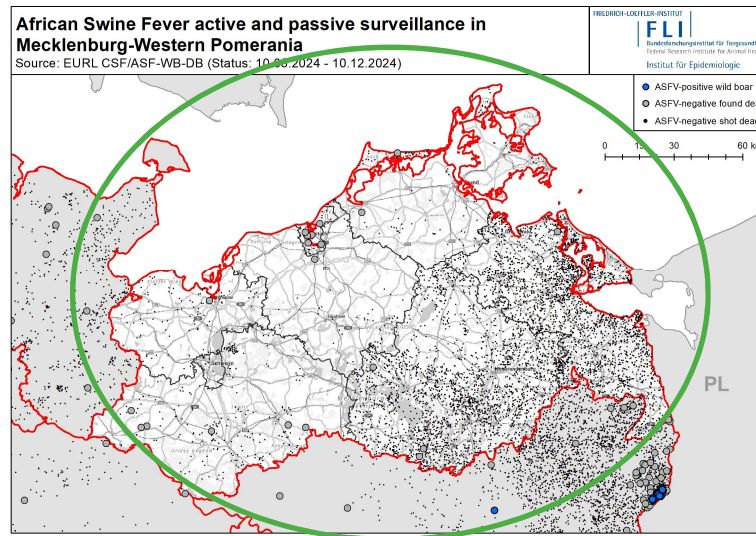
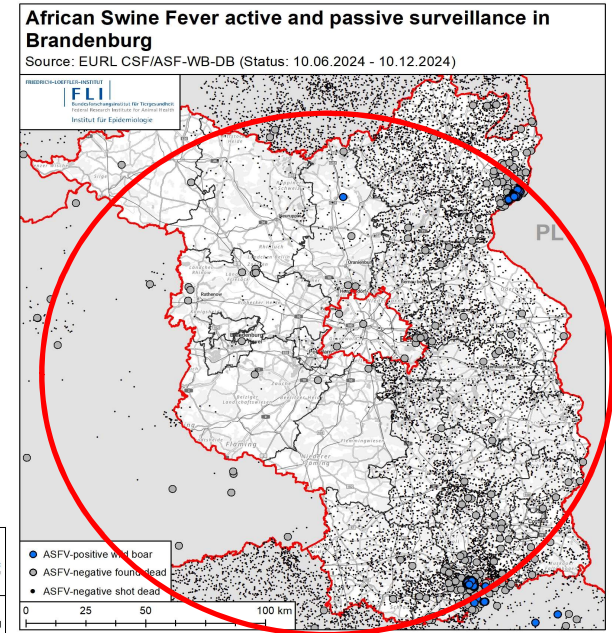
ASF – infected zone in BB

- single wild boar found 20.11.24
- Landkreis Oberhavel: infected zone with 10 km radius since 23.11.2024 (330 km²)
- within the infected zone are 55 pig holdings with ca. 6.000 pigs located
- search for carcasses with dog teams and drones, epi investigations with support FLI
- all found bones found were ASF negative, also between infected zone and RZ I/ II
- preliminary fencing via electronic fence
- all hunted wild boar virological and serological in Landkreis Oberhavel and neighboured administrative divisions

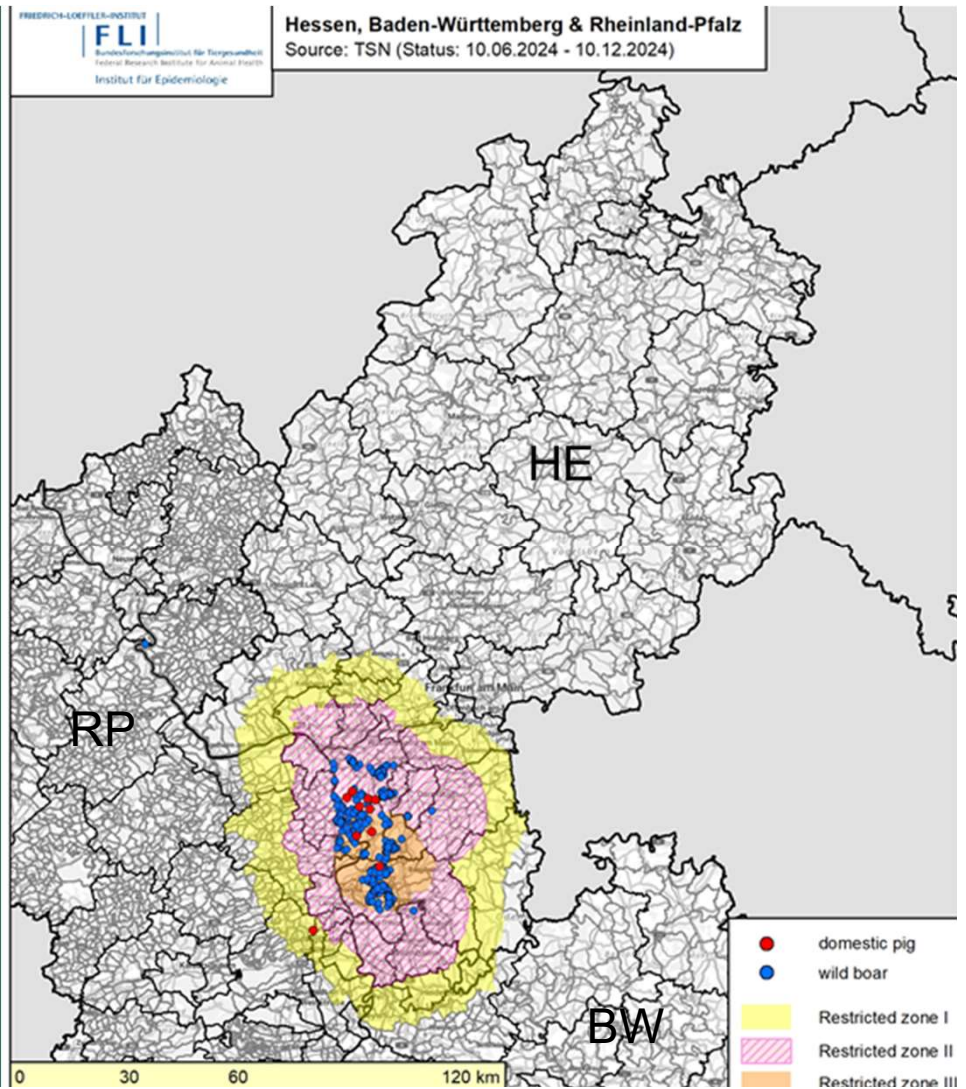




ASF monitoring in BB, MV and SN



ASF in Hesse and Rhineland Palatinate (RP)



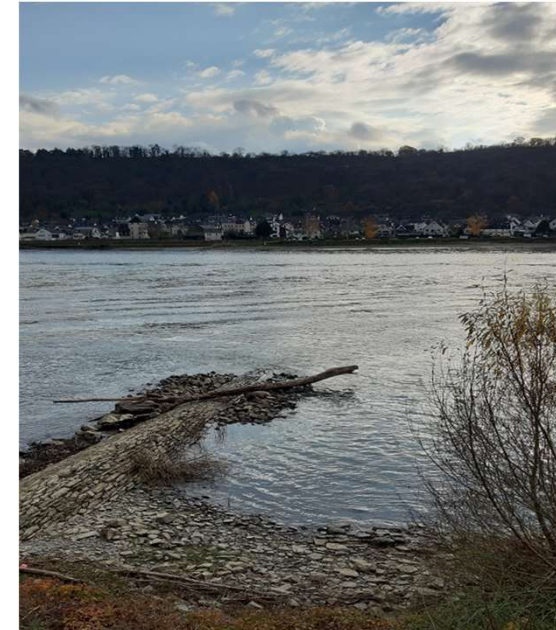
ASF in a single wild boar floated off in River Rhine

single wild boar found dead within the River Rhine near Boppard in Rhein-Hunsrück-Kreis on November 26th

carcass in good condition (no nutritional traces, hardly decomposed)

immediate start of carcass search in surrounding area and fencing of a core zone

no establishment of restriction zones



ASF in a single wild boar floated off in River Rhine - measures

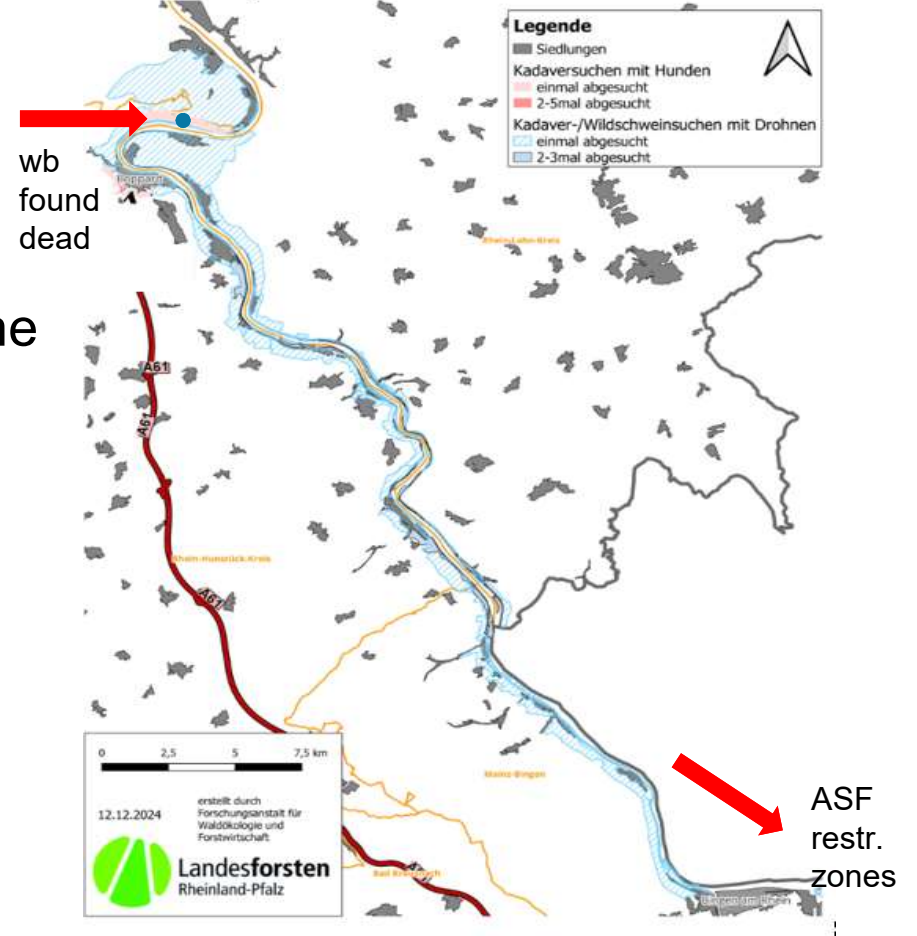
search for carcasses along the River Rhine with dog teams and drones

areas were inspected once (shaded) or twice/ three times (grey blue)

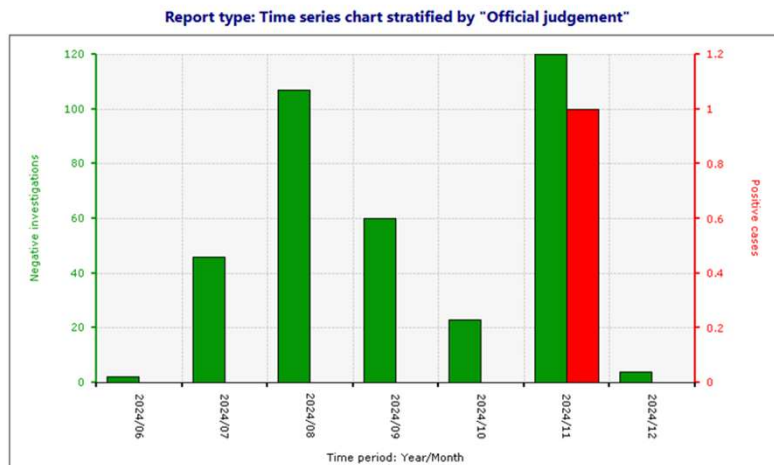
so far only bones found near Boppard an Ingelheim



Durchgeführte Kadaver- und Wildschweinsuchen - Stand 12.12.2024
Rheinufer Steilhänge

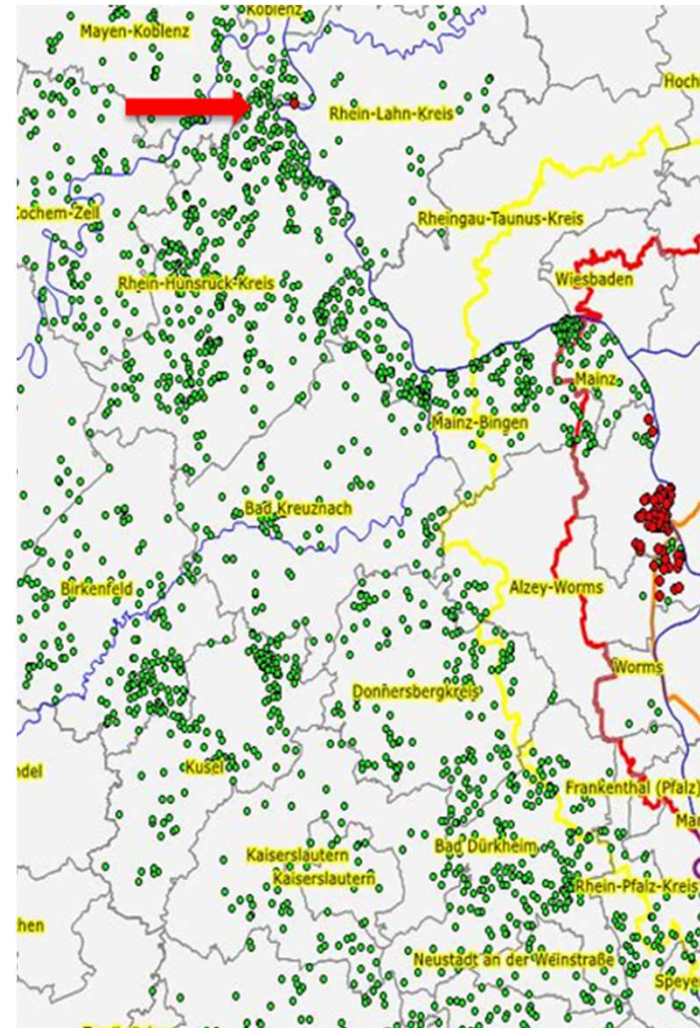


ASF in a single wild boar floated off in River Rhine – monitoring in Rhein-Hunsrück-Kreis



Time period (Year/Month)	Negative *	Positive **
2024/06	2	0
2024/07	46	0
2024/08	107	0
2024/09	60	0
2024/10	23	0
2024/11	120	1
2024/12	4	0
Totals	362	1

Explanation:
 * = number of negative ASF investigations stratified by "Official judgement"
 ** = number of positive ASF cases stratified by "Official judgement"



ASF in RP – carcass search

modus of search	until Dec 5th 2024	until Dec 12th 2024
drone	34.639 ha	34.859 ha
dog team	2.731 ha	2.921 ha

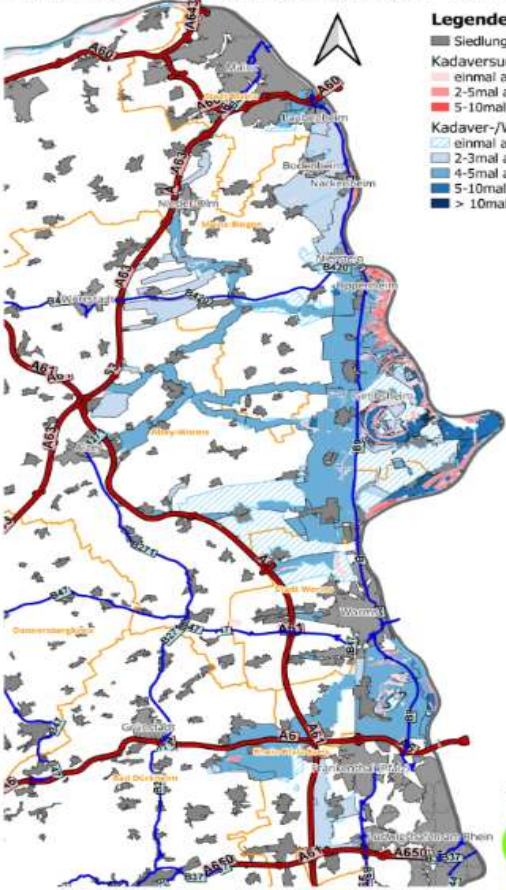
- Legende**
- Siedlungen
 - Kadaversuchen mit Hunden
 - einmal abgesucht
 - zweimal abgesucht
 - Kadaver-/Wildschweinsuchen mit Drohnen
 - einmal abgesucht
 - zweimal abgesucht

12.12.2024
 erstellt durch
 Forschungsanstalt für
 Waldökologie und
 Forstwirtschaft
Landesforsten
 Rheinland-Pfalz



Durchgeführte Kadaver- und Wildschweinsuchen - Stand 12.12.2024

- Legende**
- Siedlungen
 - Kadaversuchen mit Hunden
 - einmal abgesucht
 - 2-5mal abgesucht
 - 5-10mal abgesucht
 - Kadaver-/Wildschweinsuchen mit Drohnen
 - einmal abgesucht
 - 2-3mal abgesucht
 - 4-5mal abgesucht
 - 5-10mal abgesucht
 - > 10mal abgesucht



12.12.2024
 erstellt durch
 Forschungsanstalt für
 Waldökologie und
 Forstwirtschaft
Landesforsten
 Rheinland-Pfalz

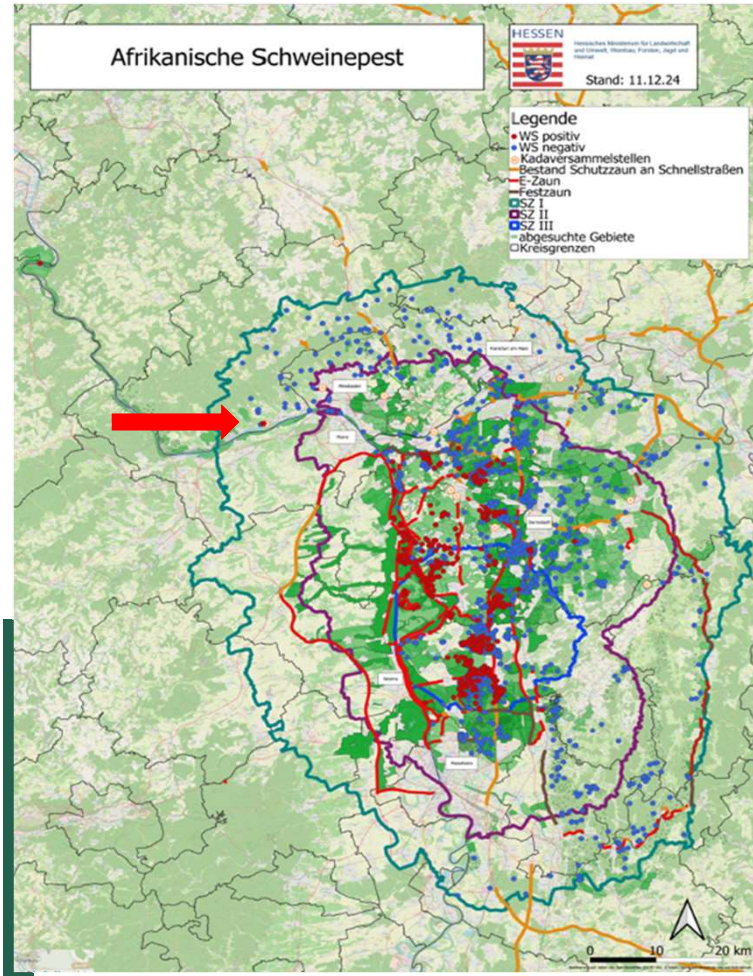
ASF in HE – new case(s) in RZ I

ASF positive wild boar found in Eltville (Rheingau-Taunus-Kreis, HE) in current RZ I – confirmation December 11th

animal found dead (carcass in good condition) between state road B 42 and River Rhine

immediate start for carcass search with drones (293 ha) and strategic fencing along state road B 42

recently (Dec 12Th) more wild boar found dead in near area - Mariannenaue



Thanks to the colleagues of:

- Friedrich-Loeffler-Institute
- Ministry of Brandenburg
- Ministry of Hesse
- Ministry of Rhineland Palatinate

Thank you for
your attention!

Federal Ministry of Food and Agriculture
Directorate 3
Unit 323 – Animal Diseases -
EU-Trade, International Affairs, Crisis Centre
Rochusstr. 1
53123 Bonn

Dr. Barbara Hoffmann
323@bmel.bund.de
www.bmel.de
Tel. +49 30 12 345-3560



www.bmel.de
@bmel
@Lebensministerium