



Classical Swine Fever

Control and Eradication Programme in Bulgaria in 2015

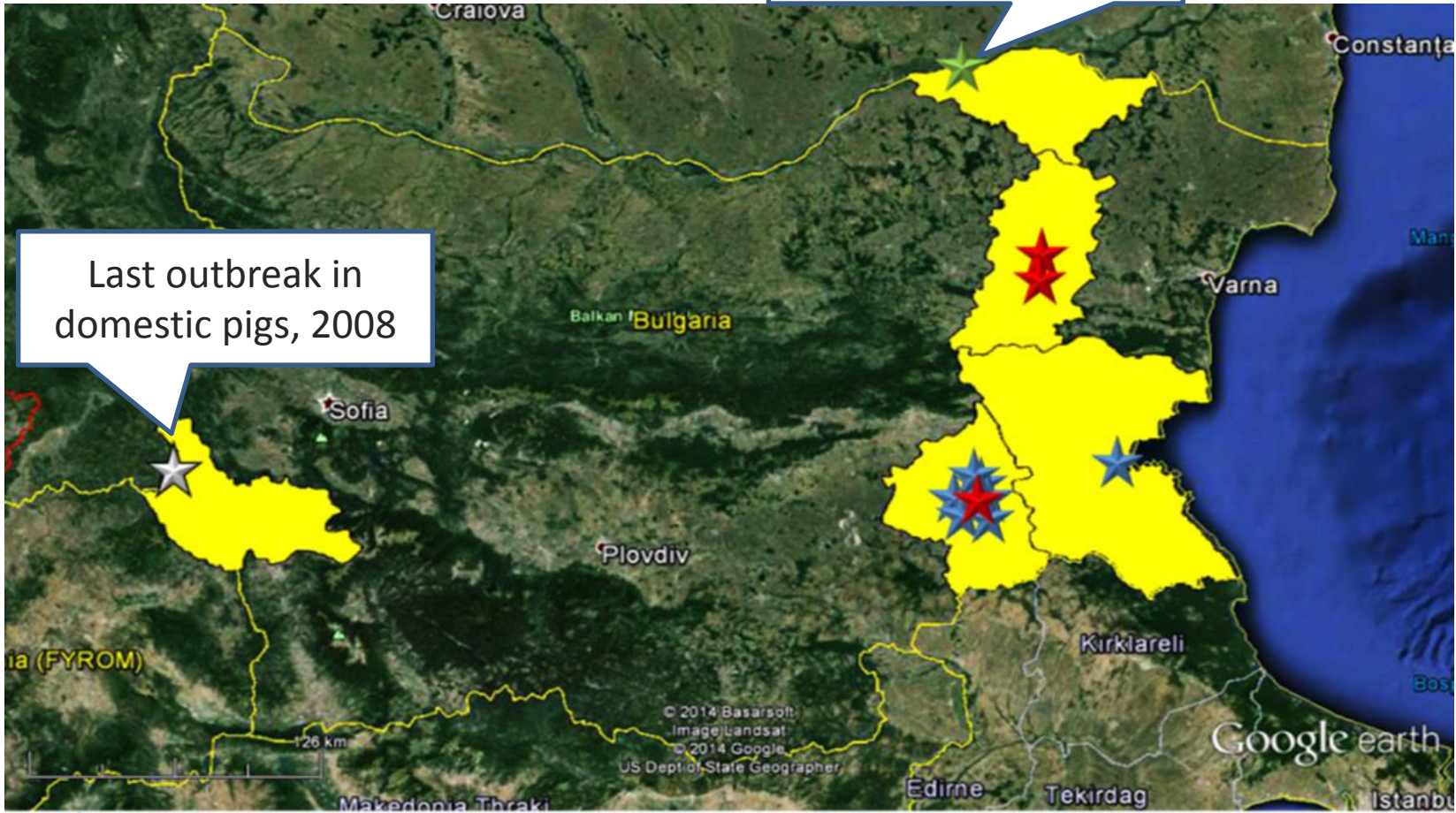






SC PAFF,
01-02 May 2016



Last outbreak in wild boar, 2009

Last outbreak in domestic pigs, 2008



-  CSF outbreak in domestic pigs in 2006
-  CSF outbreak in domestic pigs in 2007
-  CSF outbreak in domestic pigs in 2008
-  CSF outbreak in wild boar in 2009



CSF control strategy in domestic pigs

Categorization of farms based on bio-security level

- **Industrial farms**
- **Family farms type A** (bio-security in place)
- **Family farms type B** (poor bio-security)
- **Backyards** (poor bio-security)
- **East-Balkan pigs** (under special control program of veterinary service)

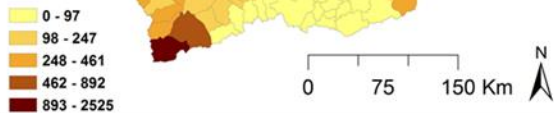
Active surveillance

- **Clinical surveillance** to detect clinical cases of CSF as early as possible and submission of check lists data into the national database;
- **Serological and virological surveillance**

Passive surveillance

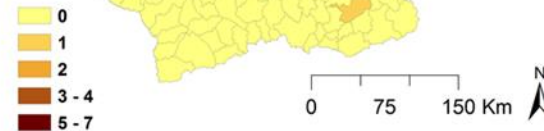
Pig farms

1



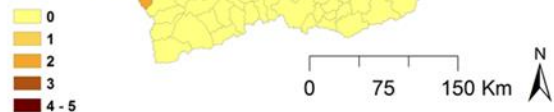
Industrial farms

2



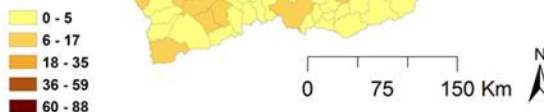
Type A farms

3



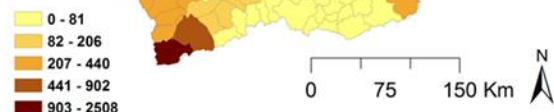
Type B farms

4



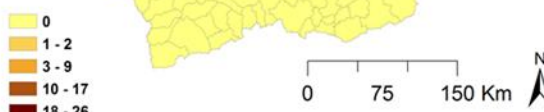
Backyards

5



East-Balkans

6



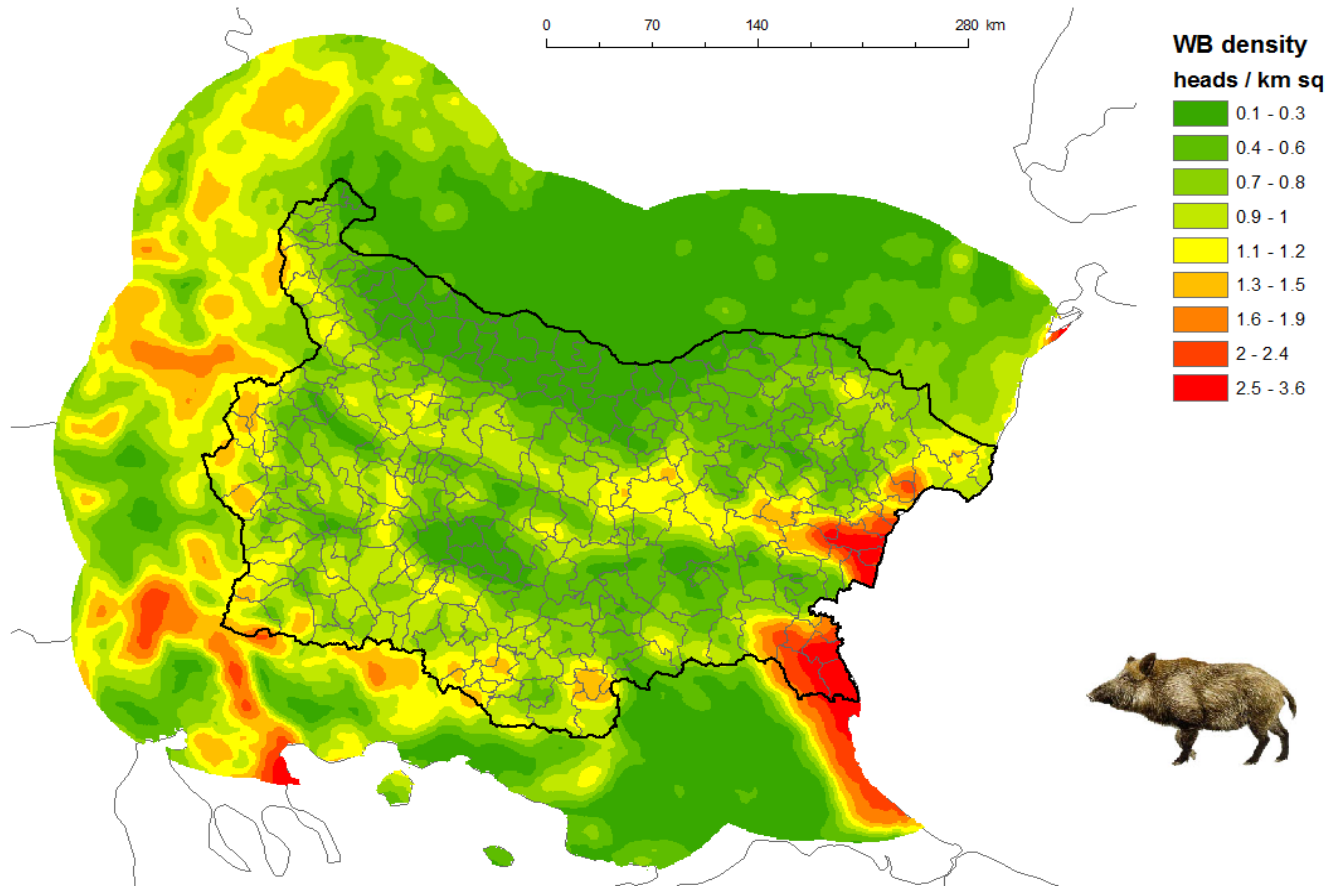


Surveillance in domestic pigs in 2015

Region	No. of holdings clinically examined	No. of holdings sampled	No. of animals individually sampled	Number of positive herds	Number of new positive herds	Number of herds depopulated	% positive herds depopulated	% Animals covered by serological examination	% Holdings covered by clinical examinations	% Implementation of the programme
BG	16 571	500	5 970	0	0	0	0	11,9%	92%	77%



CSF control strategy in wild boar



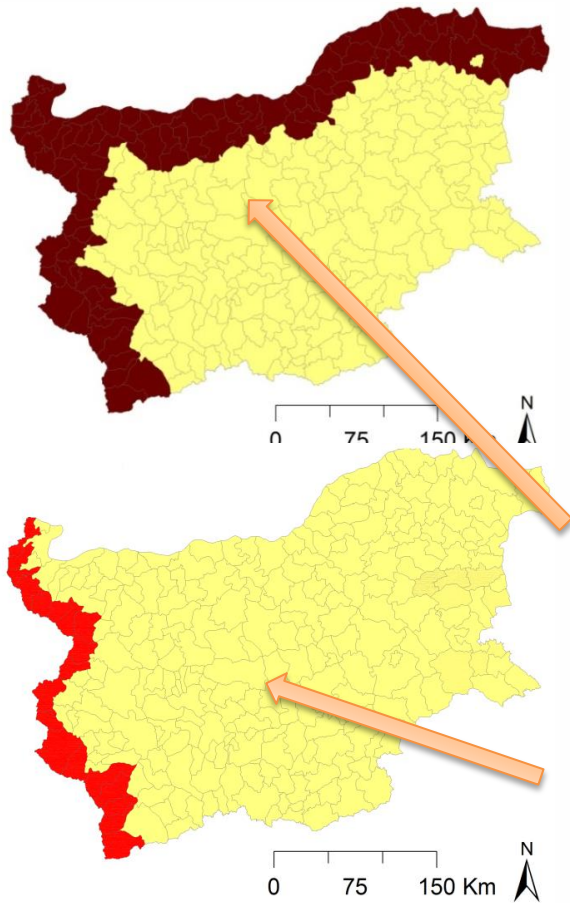
Wild boar population on the territory of Bulgaria in
2015 – **90 130**



CSF control strategy in wild boar

Oral vaccination of wild boar

- ❖ **2005 – 2008** – Two vaccination campaigns with 2 bites distributions in 14 days for each per year. Only the last vaccination campaign in 2008 was carried out within 40 km zone along the west and north borders of the country
- ❖ **2009 – 2012** - Three vaccination campaigns with 2 bites distributions in 14 days within **40 km zone along the west and north borders** of the country
- ❖ **2013 – 2014** - Three vaccination campaigns with 2 bites distributions in 14 days within the **municipalities along the west and north borders** of the country
- ❖ **2015** - Three vaccination campaigns with 2 bites distributions in 14 days within the **municipalities along the west borders** of the country



Region	Month	No. of baits distributed	Bait uptake	Size of vaccination area (sq. km)
Blagoevgrad	Apr; Sept-Oct; Nov-Dec	11540	11540	2174,6
Vidin	Apr; Sept-Oct; Nov-Dec	4037	3838	3000
Kyustendil	Apr; Sept-Oct; Nov-Dec	12340	12340	1912,45
Montana	Apr; Sept-Oct; Nov-Dec	7540	7540	1803,576
Pernik	Apr; Sept-Oct; Nov-Dec	8000	8000	450
Sofia-district	Apr; Sept-Oct; Nov-Dec	7240	7240	703
Total		50697	50498	10043,626



Surveillance in wild boar in 2015

Animals tested serologically

Region	Approximate number of herds	Estimated number of animals to be tested under the programme	Number of animals tested*	Number of animals tested individually	Number of positive animals	Slaughtering		Indicators	
						Number of animals with positive results	Total number of animals slaughtered	% coverage at animal level	% positive animals - prevalence
BG	6600	5000	4021	4021	202**	0	0	80,42	5,02

**animals found sero-positive due to vaccination in vaccination areas

Animals tested by PCR

Region	Approximate number of herds	Estimated number of animals to be tested under the programme	Number of animals tested*	Number of animals tested individually	Number of positive animals	Slaughtering		Indicators	
						Number of animals with positive results	Total number of animals slaughtered	% coverage at animal level	% positive animals - prevalence
BG	6600	5000	4128	4128	0	0	0	82,56	0



Thank you!

Bulgarian Food Safety Agency, Animal Health & Welfare Directorate
<http://babh.government.bg/>; e-mail: t_alexandrov@bfsa.bg; ☎ 00359 2 915 98 42