

The National Sanitary Veterinary and Food Safety Authority of Romania



EPIDEMIOLOGICAL SITUATION - ASF



SCoPAFF

23-24.09.2020



ASF - EPIDEMIOLOGICAL SITUATION 15.07-21.09.2020 -SINCE LAST SCOAPFF-

DOMESTIC PIGS		WILD BOARS		
No. of confirmed outbreaks	No. of active outbreaks	No. of positive cases	No. of positive found dead wb	No. of positive hunted wild boars
346	426 from 2020 + 77 from 2019	140	72	68
From which, 7 in big comm.farms 2 in type A comm. farm	503 total			

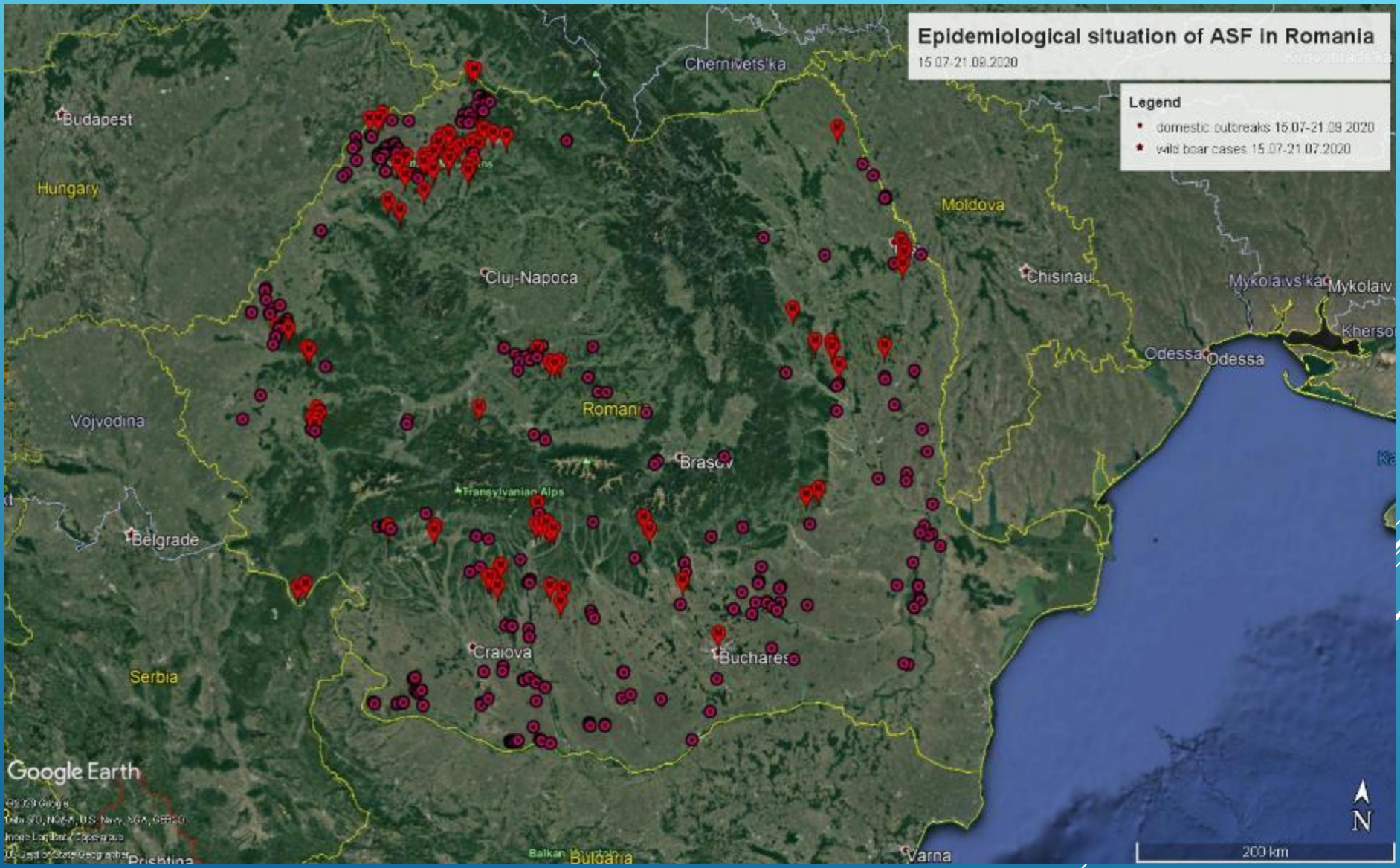
Epidemiological situation of ASF in Romania

15.07-21.09.2020

Karlovskiy I. et al.

Legend

- domestic outbreaks 15.07-21.09.2020
- wild boar cases 15.07-21.07.2020



Google Earth

© 2020 Google
Data SIO, NOAA, U.S. Navy, NGA, GEBCO
Imagery Landsat © 2020
Map data © OpenStreetMap contributors

INFORMATION ABOUT THE USE OF PROVISIONS FORESEEN IN ART. 11.2(C) OF DIRECTIVE 2002/60/EC

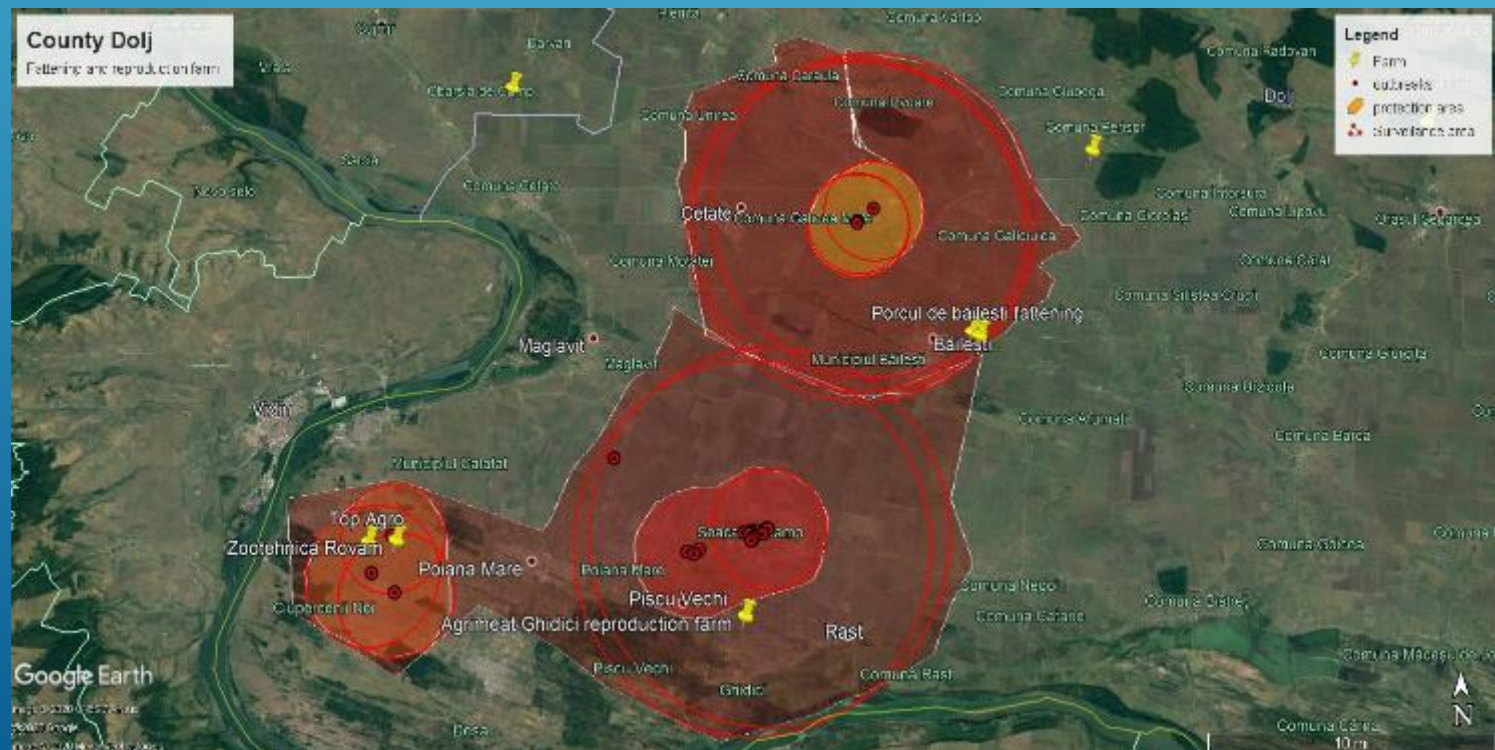
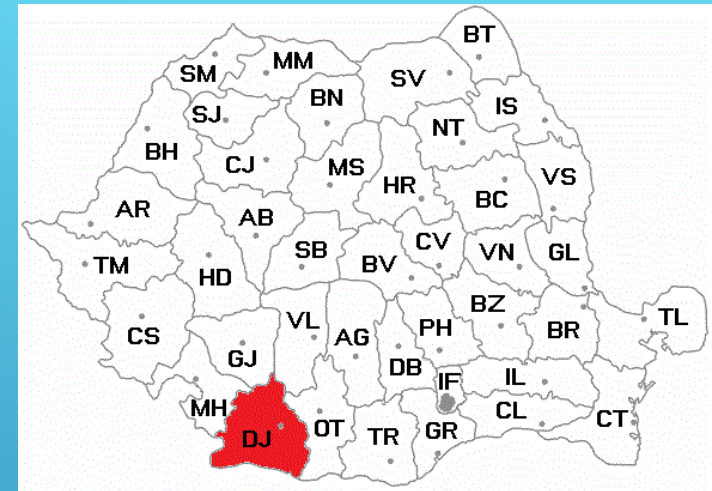
Due to the epidemiological situation of ASF in Romania, in some areas where commercial farms are located, several outbreaks have been confirmed in backyards, leading to movement restrictions of pigs beyond 40 days because of successive ASF outbreaks. Thus, the animal welfare is at risk: high density, high temperatures, behavioral disorders like otrophagy, tail biting, etc.

Motivated by the welfare conditions, NVFSA has to approve the movement of live pigs to other premises located in areas with the similar epidemiological situation, as laid down in the Art. 11.2(c) of Directive 2002/60/EC, provided that all relevant conditions of the legislation in force are also met.

1. DOLJ COUNTY

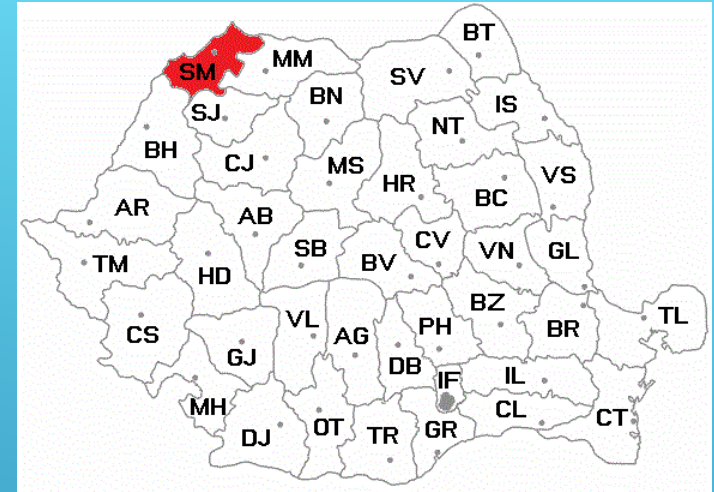
In the South part of Romania, Dolj county, there is an ASF infected area, in which several outbreaks have been confirmed in backyards, leading to movement restrictions on a pig breeding farm, starting with 24.06.2020.

The same operator also has 2 fattening farm located at 20 km, in the same restriction area as is shown in the map attached.



2. SATU MARE COUNTY

In the North East part of Romania, particularly in Satu Mare county, many outbreaks have been confirmed in domestic pigs from backyards and is also an infected zone as a result of wild boar cases evolution.



In July – September, at the peak of ASF evolution, a number of 69 outbreaks were confirmed in Satu Mare county. Thus, out of 16 commercial farms in the county, 12 are under movement restrictions, some for more than 2 months due to the successive outbreaks of ASF in non-professional farms. In some situations, pigs reached 145-160 kg. This has led to impaired animal welfare conditions, commercial farms are financially affected and the situation is dramatic, overall. Delivery with heat treatment can no longer be a solution due to the large number of farms that are unable to deliver.



At this moment, the minimum welfare norms can no longer be provided:

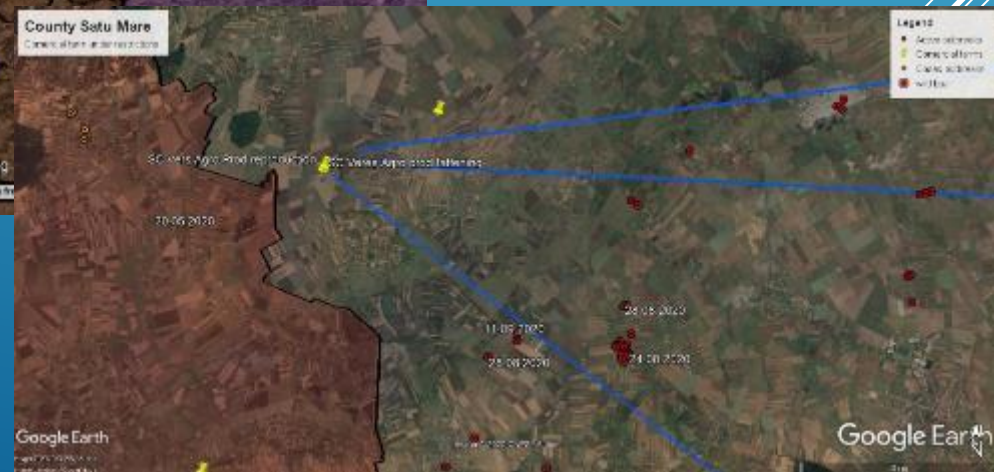
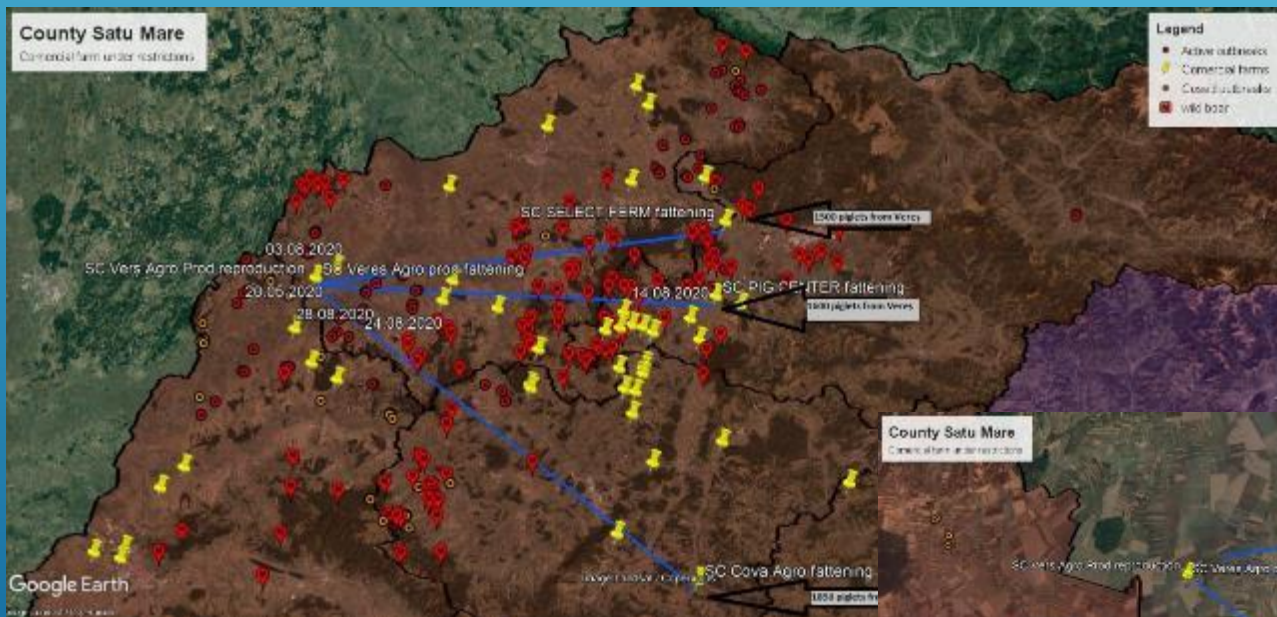
- ▶ density - pigs are crammed into boxes,
- ▶ a feeding front can no longer be provided so that all the pigs in the box can eat at the same time
- ▶ adequate rest of the pigs at the same time can not be ensured anymore
- ▶ behavioral changes began to be observed: aggression, cannibalism (they eat each others tails / ears),

The existing technology is overloaded and is not designed to operate in these conditions of overcrowding and exceeding the optimal weight of pigs:

- ▶ the ventilation system is overloaded to ensure the best possible air quality.
- ▶ their own feeding establishment is overloaded being needed to produce a quantity of 60 tons / day compared to a maximum need of 30 tons / day under normal conditions.
- ▶ the plastic floor in youth sector are under risks to break due to exceeding weight of the pigs

Motivated by the welfare conditions (high density, high temperatures, behavioral disorders like otophagy, caudophagy, etc.) we have to give a derogation, in accordance with Directive 2002/60/EC, art. 11, point 2, c). We have to approve the movement of 4950 fattening pigs to other 3 fattening farms, located in the immediate vicinity of Satu Mare County in areas with the similar epidemiological situation. We would like to highlight that the farm in question has been collaborating with these farms for a long time.

We also mention that the farm complies with the biosecurity conditions imposed by the competent authority and implements an intensive testing program for pigs in the direction of African swine fever.



The National Sanitary Veterinary and Food Safety Authority of Romania



THANK YOU FOR YOUR ATTENTION!
QUESTIONS?

