



# Foot and Mouth Disease (FMD) in Germany

AHAC 24 Jan 2025

*DG SANTE – G2 Animal Health  
European Commission*

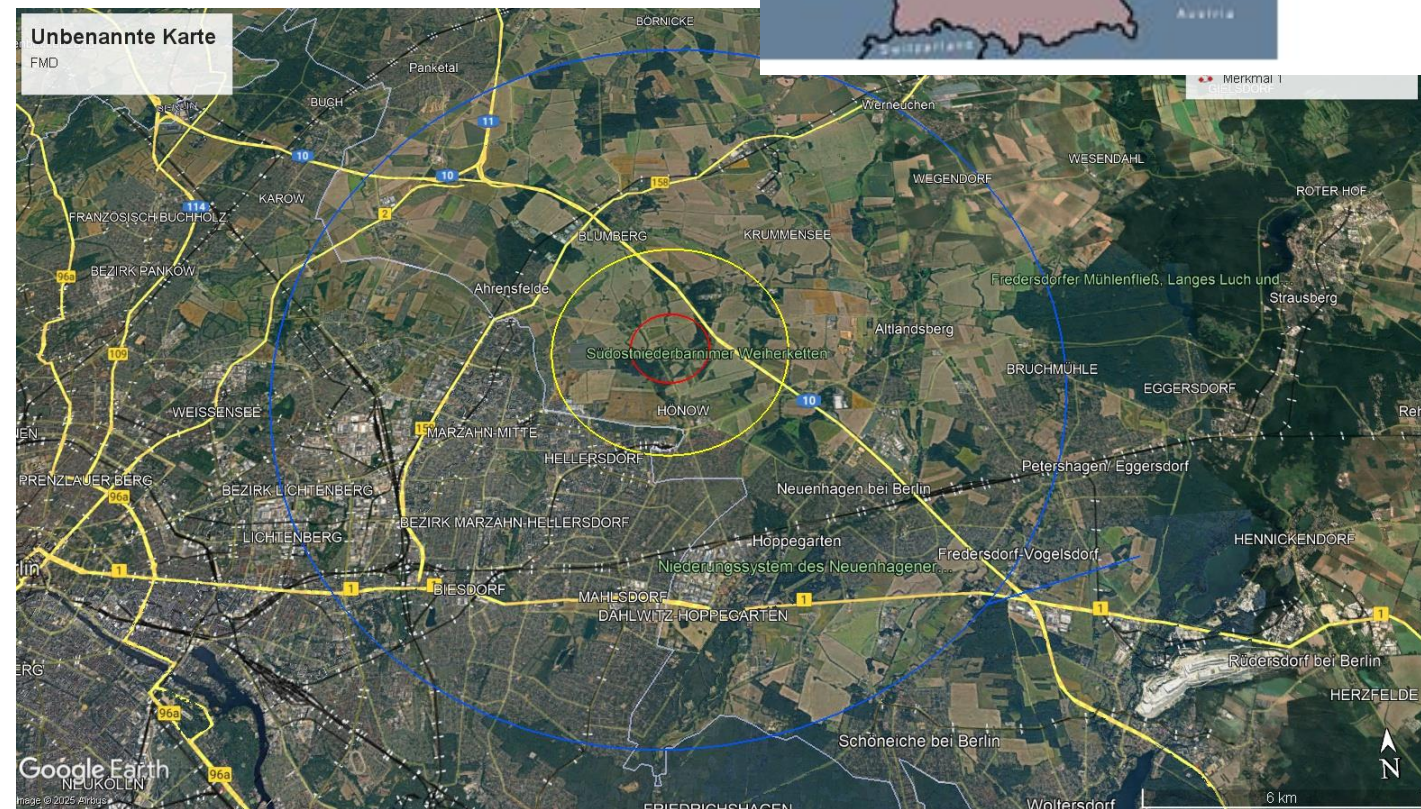
# Outline

- Epidemiological situation and measures
- EU Coordination
- International reactions
- Conclusions

# Epidemiological situation and measures

# FMD Outbreak in Germany

- 1<sup>st</sup> FMD outbreak in Germany **since 1988**
- **Confirmed on 10/01/2025** in Brandenburg (BB)
- Animals **culled** on the same day as per EU legislation
- Establishment with 14 **water buffalo** in Märkisch Oderland district
- Extensive keeping in nature reserve close to Berlin

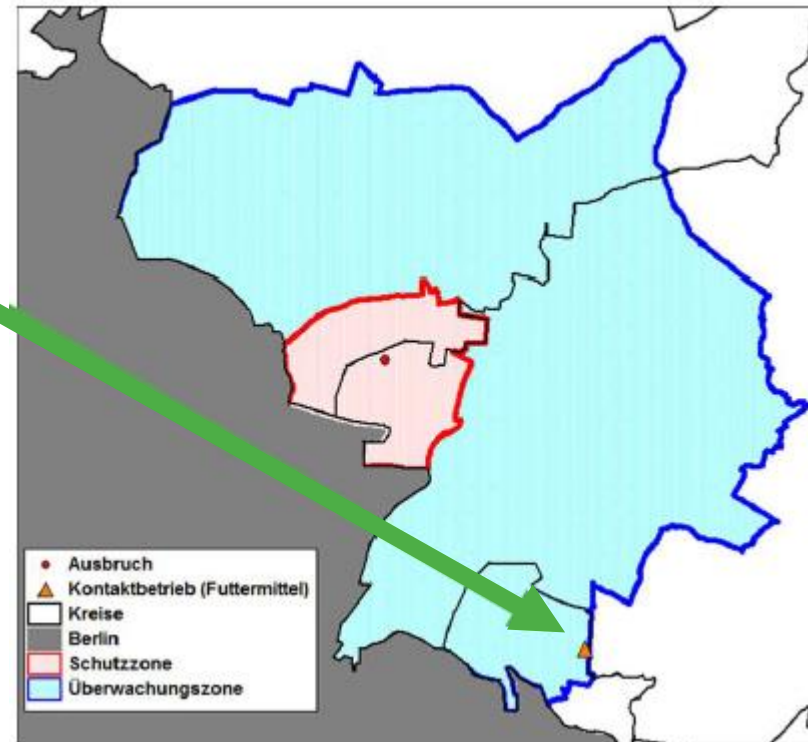


# FMD Outbreak in Germany

Further investigations:

- **suspected holding** 12km north of the outbreak (on 16 January)
- **Contact holding** (same owner sharing hay)

**BOTH TESTED NEGATIVE**

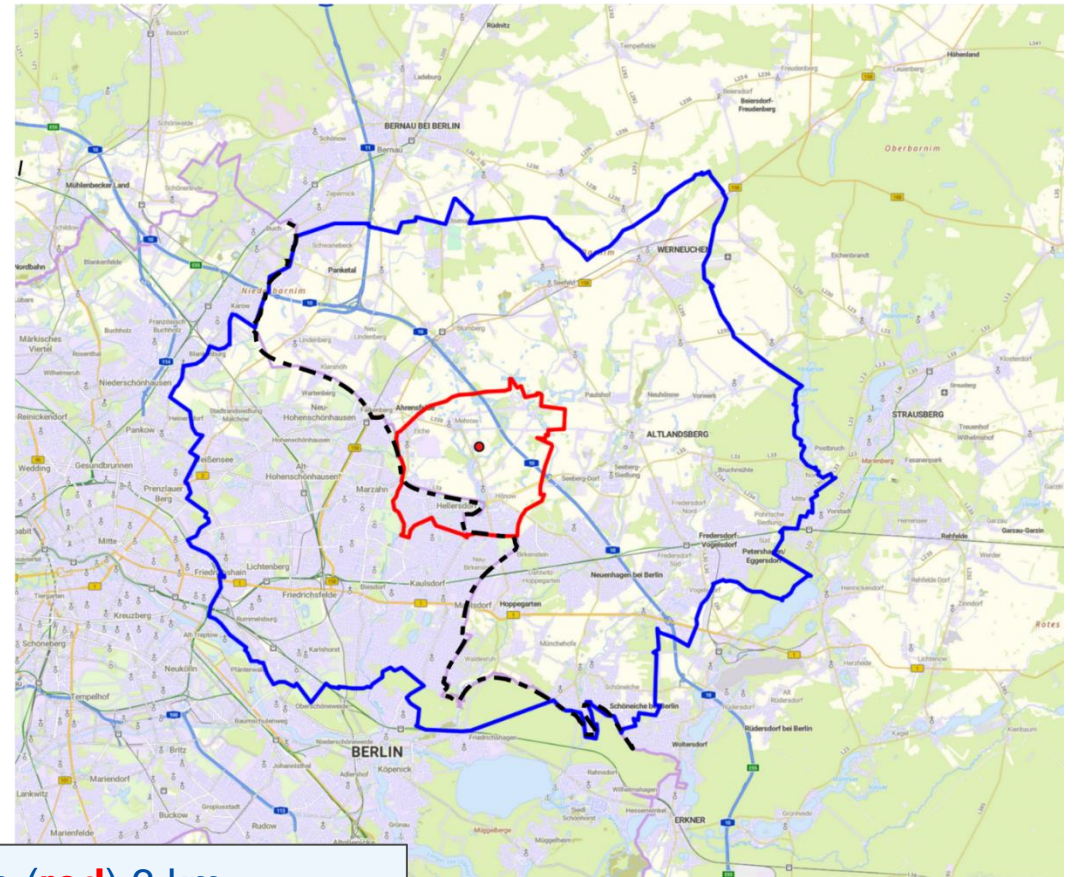




# FMD Outbreak – Application of Measures

Application of regulation (EU) 2020/687

- Immediate setting up of **protection** and **surveillance** zones
- Culling of all animals, then cleaning and disinfection (completed on 11 January)
- Strict movement restrictions for animals and their products
- Check all establishments (11 est. in PZ and 155 est. in SZ)
- Biosecurity measures (incl. wildlife)



Protection zone (**red**) 3 km

Surveillance zone (**blue**) 10 km

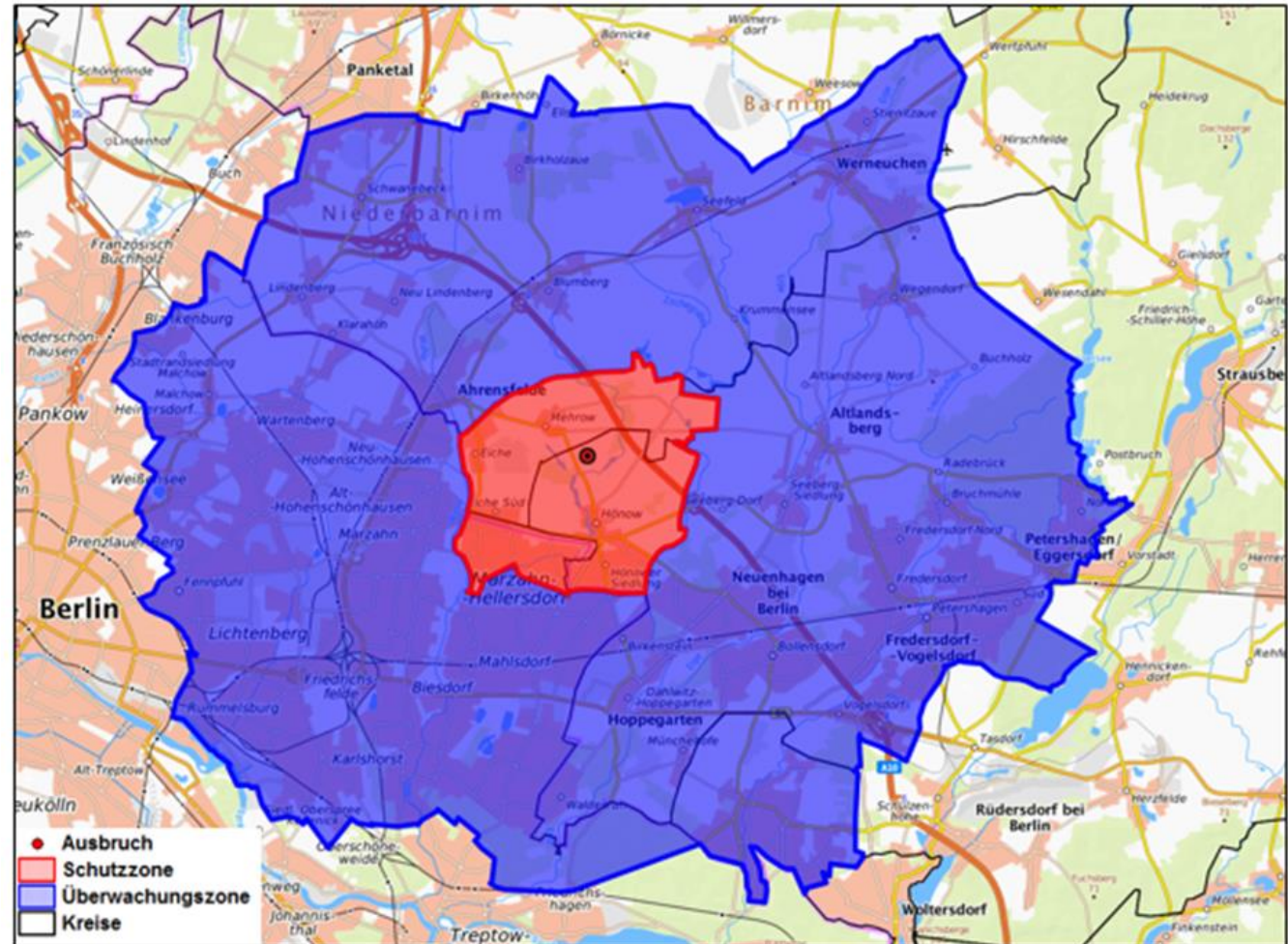
Berlin-Brandenburg Border (**black**)

# FMD measures in Brandenburg and Berlin

- Restricted zones:
  - 3 km protection zone (11 estab.)
  - 10 km surveillance zone (155 estab.)
- Cloven-hoofed animals of Tierpark Berlin tested negative

Nearly 100% establishments checked and sampled (2 kept-cervid establishments missing)

70% tests finished, all negative (virologically/serologically) (117 estab.)



# FMD measures in Brandenburg and Berlin

Clinical checks, sampling and test results

→ **1km-radius** kulling zone - three establishments

district	Cloven hooved animals	No. of animals killed	No. of animals clinically examined	No. of animals with clinical symptoms	No. of animals sampled	Laboratory testing results	
						virology	serology
MOL	4 sheep	4	4	0	4	negative	negative
BAR	245 pigs	245	245	0	245	negative	negative
BAR	9 sheep, 3 goats	12	12	0	12	negative	negative



# FMD measures in Brandenburg and Berlin

Clinical checks, sampling and test results

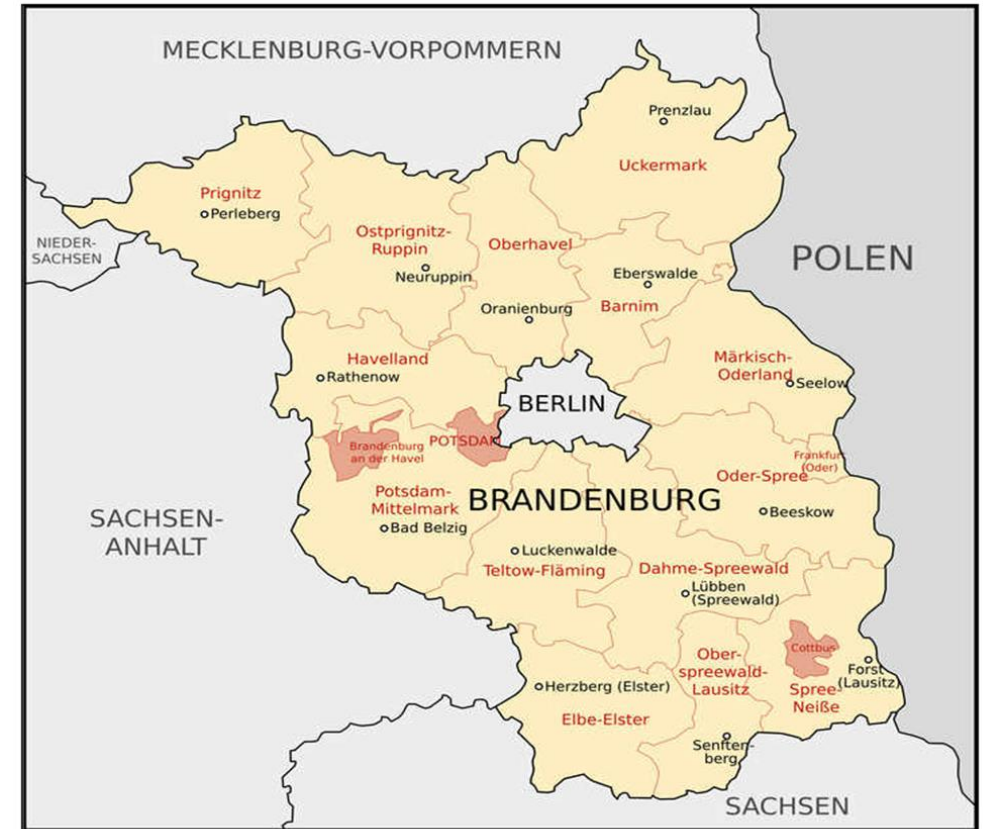
→ **3km-radius** protection zone - eight more establishments

district	Cloven hooved animals	No. of animals killed	No. of animals clinically examined	No. of animals with clinical symptoms	No. of animals sampled	Laboratory testing results	
						virology	serology
BAR	10 sheep	0	10	0	10	negative	negative
BAR	3 sheep, 1 pig	0	4	0	4	negative	negative
BAR	33 sheep	0	33	0	33	negative	negative
BAR	7 cattle	0	7	0	7	negative	negative
MOL	2 sheep, 2 goats, 2 pigs	0	6	0	6	negative	negative
MOL	2 pigs	0	2	0	2	negative	negative
MOL	4 cattle	0	4	0	4	negative	negative
Marzahn- Hellersdorf Berlin	15 sheep, 7 goats, 6 pigs	0	28	0	28	negative (20) (8 results outstanding)	negative

# FMD Outbreak – Application of Measures

- In addition, a **standstill for all cloven-hoofed animals** was applied in all Brandenburg until 17 January and in Berlin until 27 January
- Further measures applied by Germany:
  - Sampling for FMD in wild animals
  - Only single hunt in BB allowed
  - Testing for FMD for previously bluetongue suspicions and wild boar ASF samples
  - Meat of buffalo slaughtered previously (4 December) tested
- **so far all tested negative**

**Eine Landkarte vom Bundesland Brandenburg**

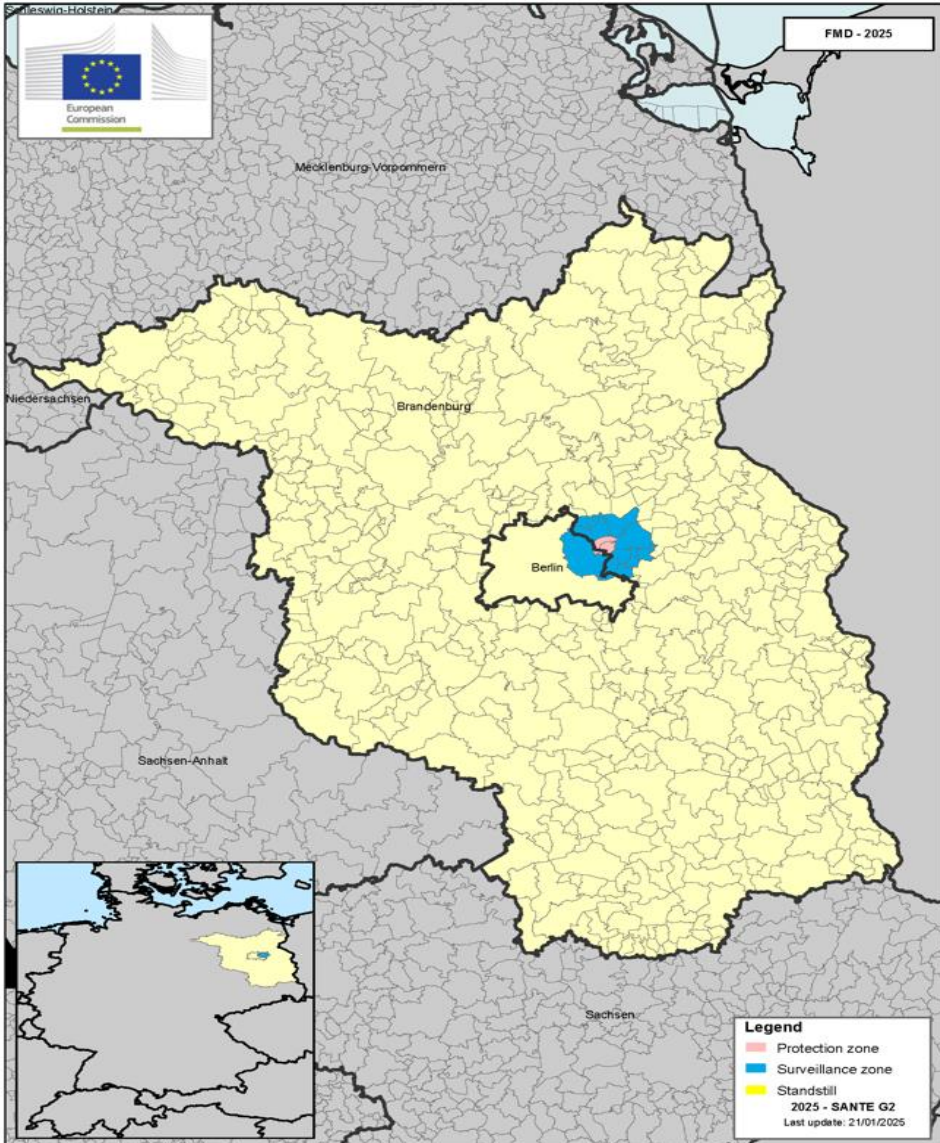


Auf dieser Karte sehen Sie die Grenzen der 14 Landkreise in Brandenburg und die wichtigsten Städte.

# FMD Outbreak – Further Measures

- As precautionary measure, the **German CA** activated their **vaccine bank**
- **In all of Germany: FMD - testing of cloven-hoofed animals originating from Brandenburg: so far all tested negative**
- **Traceback** and communication with the other MS on animal movements from Brandenburg
- Note that the **EURL** is working on **vaccine matching** with field strain from Germany
- NB:
  - Berlin Zoo (in non - restricted area, reopening Friday 24th)
  - Tierpark still closed

# FMD Outbreak – Regionalisation



- Measures applied immediately after the confirmation of the outbreak
- EU legislation: **Prot.** + **Surv.** Zones
- National measures **with standstill** for cloven hoofed animals from Brandenburg and Berlin



# EU Coordination

# EU Coordination

- Early coordination already even before the confirmation (text messages and phone calls)
- Confirmation on 10 January → **ADIS** alert message & **WAHIS**
- **PAFF Committees** :
  - 13 January (extraordinary PAFF)
  - 17 January (extraordinary PAFF)
  - 22-23 January (regular PAFF)
- Extraordinary Ammal Health Advisory Committee (**AHAC**): 24 January
- **CVO** working party meeting on 21-22 January
- Daily **INFO NOTES** dispatched to MS and third countries

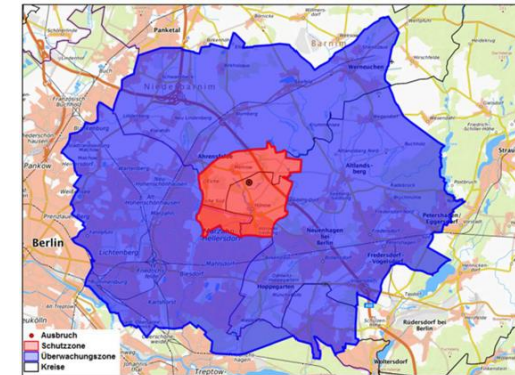
Outbreak [DE-FMD-2025-00001](#)



# EU Coordination

- **Commission adopted** COMMISSION IMPLEMENTING DECISION (EU) 2025/87 of **13 January 2025** concerning certain **interim emergency measures** relating to foot and mouth disease in **Germany**
- This measure was **confirmed** by the Committee meetings of 13 January

- **Commission will adopt today** COMMISSION IMPLEMENTING DECISION (EU) 2025/xx of 24 January 2025 concerning certain **emergency measures** relating to foot and mouth disease in **Germany**
- This measure was **voted** by the Committee meetings of 23 January



Official Journal of the European Union EN  
L series

---

2025/87 14.1.2025

COMMISSION IMPLEMENTING DECISION (EU) 2025/87  
of 13 January 2025  
concerning certain interim emergency measures relating to foot and mouth disease in Germany  
(notified under document C(2025) 206)  
(Only the German text is authentic)

(Text with EEA relevance)

# EU Coordination

- **EU Veterinary Emergency Team (EUVET)** dispatched on the spot on 15-17 Jan.
- Provided tailored recommendations both on technical and managerial aspects
- **EU Reference Laboratory** activated
  - Confirmed outbreak samples contained FMD
  - Confirmed virus serotype “O” identified earlier by FLI
  - developed a real-time RT-PCR for the specific detection of the O/ME-SA/SA-2018 lineage
  - Alerted network of national Ref. Labs. with tailored diagnostic procedures



## Foot-and-Mouth Disease EUVET mission to Brandenburg and Berlin Germany

(15-17 January 2025)

*Team: A.-E. Füssel (Team leader), T. Alexandrov (Bulgaria), K. Depner (Germany)*





# EU preparedness

- Solid legislative framework: **Animal Health Law** - Regulation (EU) 2016/429
- **Financial support** for emergency measures under the Single Market Programme: Regulation (EU) 2019/690
- **Yearly** diagnostic **ring trials** carried out via the EU Reference Laboratory FMD
- **Training** on FMD regularly supported by the EU via:
  - **BTSF workshops** (EU legislation and more operational ones on animal disease preparedness)
  - EU financial support to **EuFMD** for training and risk monitoring

# EU antigen and vaccine banks

## Commission Implementing Regulation (EU) 2022/140 of 16.11.2021

- Union antigen banks for **FMD**;
- Union vaccine banks for **CSF**, **LSD**, **PPR** and **SPGP**;

### ANNEX I

Biological products to be included in the Union antigen, vaccine and diagnostic reagent banks as referred to in Article 3

Name of category A disease	Biological product	Type and/or strain of biological product	Number of doses	Validity period of biological product
1	2	3	4	5
Foot and mouth disease	antigen	inactivated various strains representing all seven sero- types: O, A, Asia 1, C, SAT1, SAT2, SAT3	at least 1 000 000 and up to 5 000 000 for each selected antigen, depending on the priority	at least 60 months
Classical swine fever	vaccine	live attenuated	at least 1 000 000	at least 24 months
Infection with lumpy skin disease virus	vaccine	live attenuated or inactivated	at least 250 000	at least 20 months
Infection with peste des petits ruminants virus	vaccine	live attenuated or inactivated	at least 250 000	at least 20 months
Sheep pox and goat pox	vaccine	live attenuated or inactivated	at least 250 000	at least 20 months

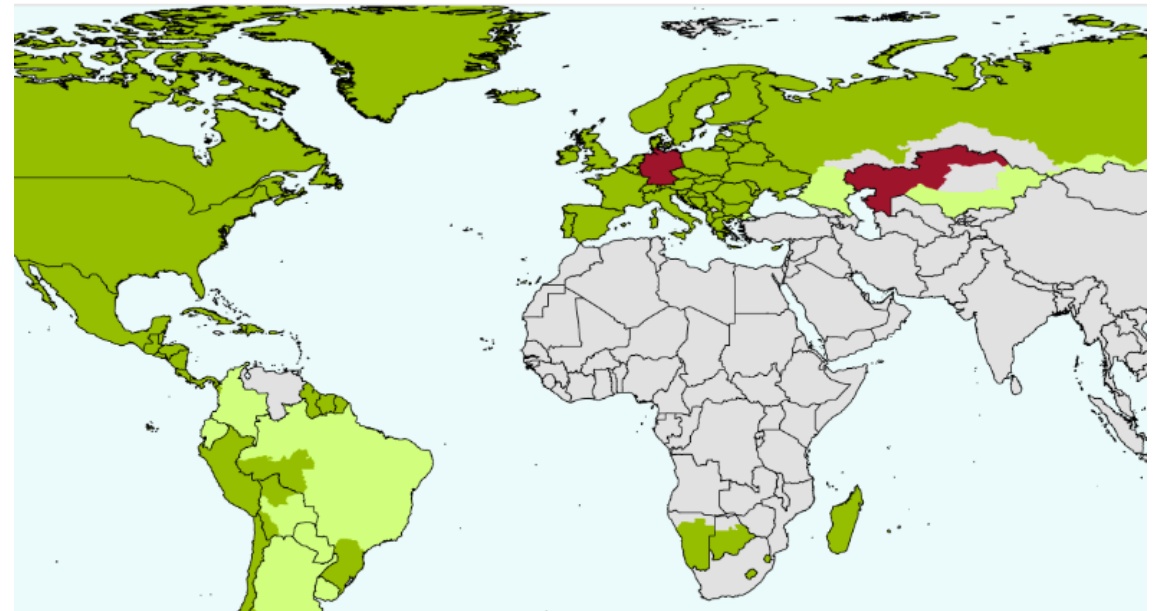
# International reactions

# International reactions

- The World Organisation for Animal Health (**WOAH**) suspended Germany's FMD free status (that often is a pre-requisite for signing relevant export certificates)
- Series of **trade restrictions** from third countries (e.g. USA, Russian Federation, UK, Japan)
- These apply to **live cloven-hoofed animals** and their **products** from Germany, as well as products from MSs containing such German products

WOAH Members' official FMD status map

Last update January 2025





# Conclusions

# Conclusions

- Measures put in place were effective so far
- Communication (info notes/PAFF/webpage/ADIS/WAHIS)
- Epi enquiry continue (human wrongdoing?)
- **Remain Vigilant → joint effort from all stakeholders**
- Useful links:
  - PAFF Committees: [https://food.ec.europa.eu/horizontal-topics/committees/paff-committees/animal-health-and-welfare/presentations\\_en#20250113](https://food.ec.europa.eu/horizontal-topics/committees/paff-committees/animal-health-and-welfare/presentations_en#20250113)
  - SANTE FMD PAGE: [https://food.ec.europa.eu/animals/animal-diseases/diseases-and-control-measures/foot-and-mouth-disease\\_en](https://food.ec.europa.eu/animals/animal-diseases/diseases-and-control-measures/foot-and-mouth-disease_en)
  - ADIS PUBLIC PAGE: <https://webgate.ec.europa.eu/tracesnt/adis/public/notification>

# Thank you



© European Union 2020

Unless otherwise noted the reuse of this presentation is authorised under the [CC BY 4.0](https://creativecommons.org/licenses/by/4.0/) license. For any use or reproduction of elements that are not owned by the EU, permission may need to be sought directly from the respective right holders.

Slide xx: [element concerned](#), source: [e.g. Fotolia.com](#); Slide xx: [element concerned](#), source: [e.g. iStock.com](#)

