

The National Sanitary Veterinary and Food Safety Authority of Romania



EPIDEMIOLOGICAL SITUATION - ASF



SCoPAFF

20.10.2020



ASF - EPIDEMIOLOGICAL SITUATION

23.09-16.10.2020

-SINCE LAST SCOAPFF-

DOMESTIC PIGS		WILD BOARS		
No. of confirmed outbreaks (23.09-16.10)	No. of active outbreaks (overall)	No. of positive cases (23.09-16.10)	No. of positive found dead wb	No. of positive hunted wild boars
108	500 from 2020 + 67 from 2019	18	3	15
From which, 2 in big comm. farms 2 in type A comm. farm	567 total			

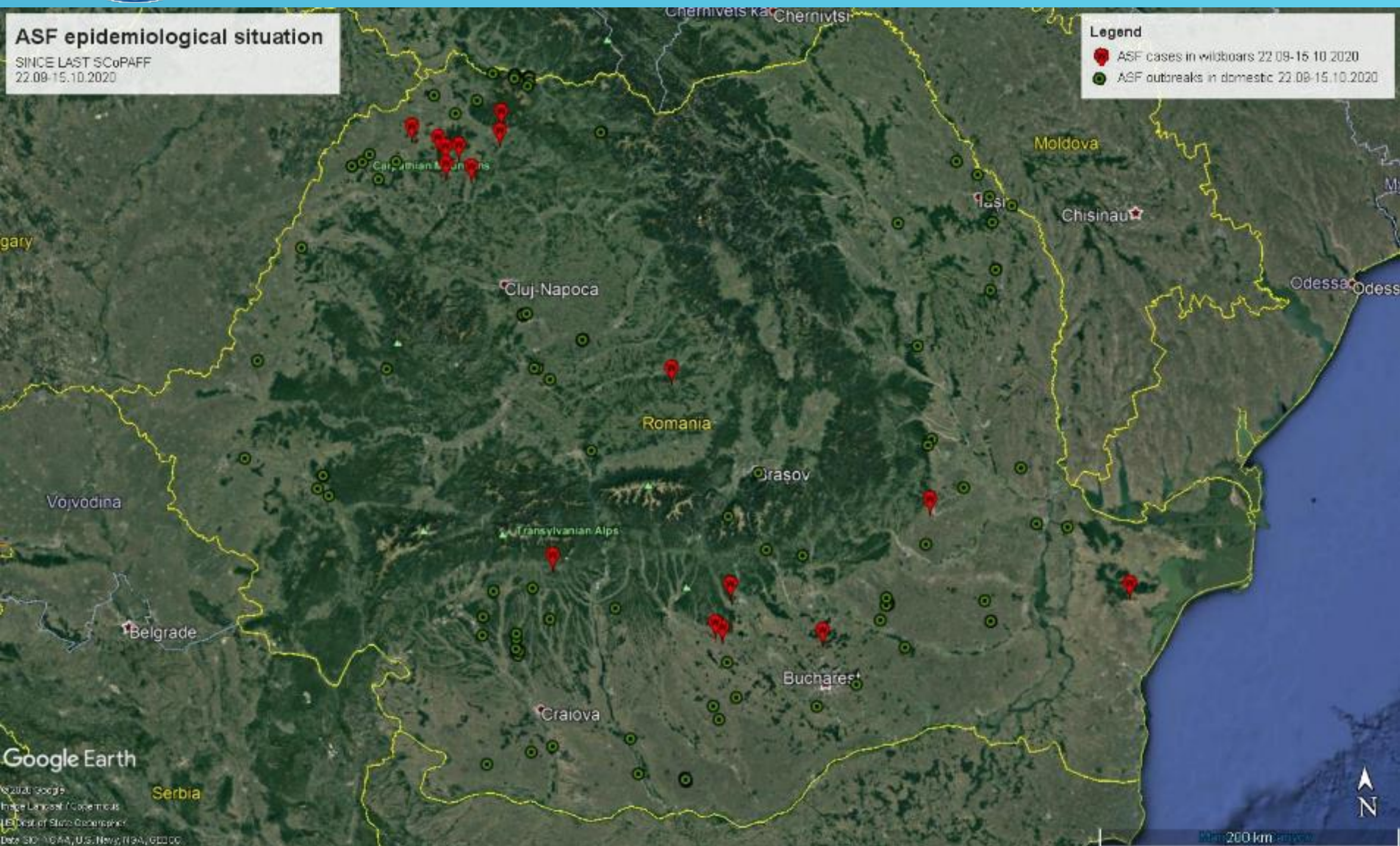


ASF epidemiological situation

SINCE LAST SCoPAFF
22.09-15.10.2020

Legend

- ASF cases in wildboars 22.09-15.10.2020
- ASF outbreaks in domestic 22.09-15.10.2020



Google Earth

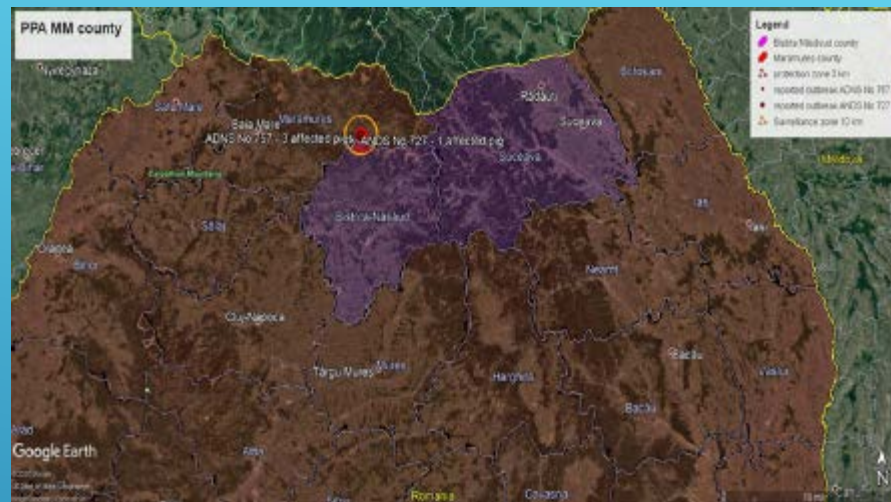
© 2020 Google
Image Licensed: Copernicus
DEM: Copernicus
Data: SIO, NOAA, U.S. Navy, NGA, GEBCO

Scale: 200 km



SINCE LAST SCOPAFF

ADNS 2020/757 and **2020/727** outbreaks are located in Part III, but in close proximity to Part II (less than 4 km). Two localities from Bistrița-Năsăud county (currently Part II) are included in surveillance zone.



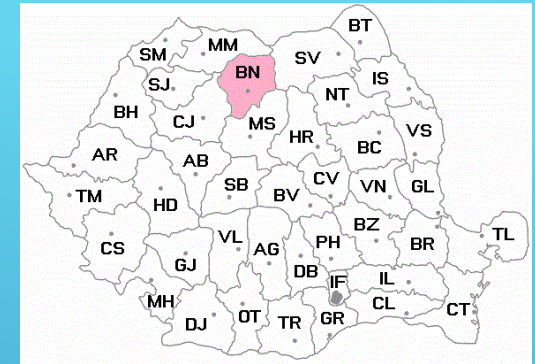
ASF - EPIDEMIOLOGICAL SITUATION SĂCEL LOCALITY MARAMUREȘ COUNTY			
No. ADNS of confirmed outbreaks	No. of susceptible animals	No. of dead animals	No. of culled and destroyed
ADNS 2020/727 29.09.2020	3	0	3
ADNS 2020/757 06.10.2020	1	0	1

MEASURES TAKEN IN SURVEILLANCE ZONE IN PART II (BISTRIȚA-NĂȘĂUD COUNTY)



- Census of all categories of pigs from all pig holdings;
- The movement and transport of pigs on public or private roads is prohibited, unless approved by the competent authorities;
- Establishment of a traffic control point on the National Road 17C at the border between Maramureș and Bistrița-Năsăud counties, in order to prevent and control ASF;
- Traffic controls on all roads that connect Bistrița-Năsăud County and neighboring counties. Control of means of transport in order to identify illegal transports of animals and products of animal origin.

BISTRIȚA-NĂȘĂUD COUNTY EPIDEMIOLOGICAL SITUATION AND SURVEILLANCE



- Included in **Part II** since **January 2019**
- No. of ASF outbreaks in domestic pigs = **0**
- No. of ASF cases in wild boars = **4**. Last case on 10.04.2019.

ASF surveillance in Bistrița-Năsăud county

Year	Domestic pigs		Wild boars	
	No of tested animals	No of positive results	No of tested animals	No of positive results
2019	676	0	982	4
2020 (until august)	329	0	564	0



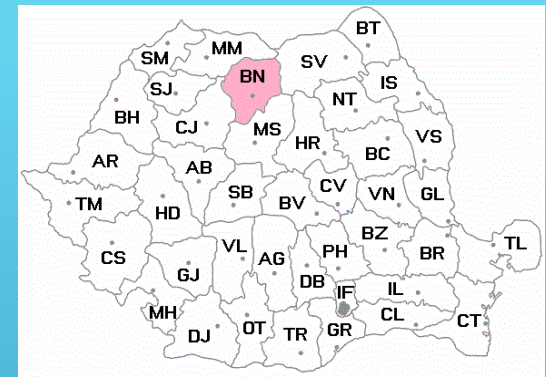
OFFICIAL CONTROLS PERFORMED IN 2020 BISTRIȚA-NĂȘĂUD COUNTY

	Big com. farms	Small com. farms	Backyards
No of holdings	2	14	23.883
No of pigs	71	209	49.215
Official controls - biosecurity	3	5	236
Official controls - identification	0	0	28
No of sanctions/warnings	0	0	24
In surveillance zone – Part II			
Holdings placed under official surv.	-	-	95

Among found deficiencies in backyards:

- Non-compliance with identification and registration rules (unidentified pigs over 60 days, National Data Base not updated, undeclared home slaughter, keeping eartags after home slaughter, etc);
- Commercial activities without documents;
- Non-compliance with national biosecurity requirements (feeding with household waste, lack of disinfecting footwear, lack of work equipment, etc.).

BISTRIȚA-NĂȘĂUD COUNTY PLANNED ASF OFFICIAL CONTROLS FOR NEXT 6 MONTH



Object of official control	No of planned controls for next 6 month
Big commercial farms	2
Small commercial farms	14
Backyards	175
Hunting grounds	39
Veterinary private practitioners	28
Traffic controls	28



INFORMATION ABOUT THE USE OF PROVISIONS FORESEEN IN ART. 11.2(C) OF DIRECTIVE 2002/60/EC

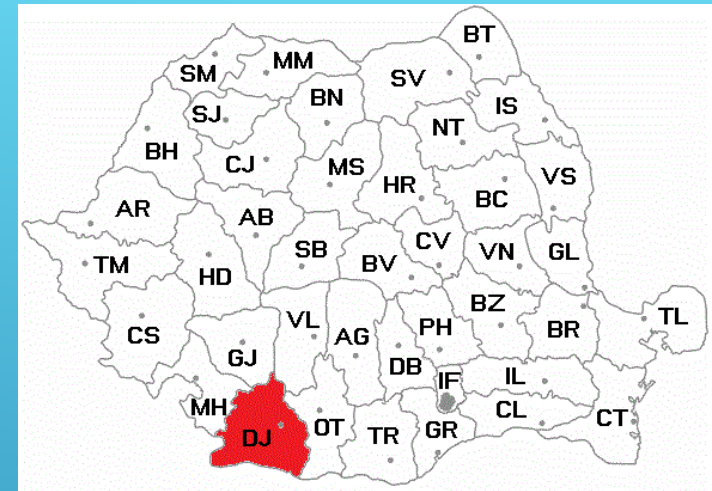
Due to the epidemiological situation of ASF in Romania, in some areas where commercial farms are located, several outbreaks have been confirmed in backyards, leading to movement restrictions of pigs beyond 40 days because of successive ASF outbreaks. Thus, the animal welfare is at risk: high density, high temperatures, behavioral disorders like otophagy, tail biting, etc.

Motivated by the welfare conditions, NVFSA has to approve the movement of live pigs to other premises located in areas with the similar epidemiological situation, as laid down in the Art. 11.2(c) of Directive 2002/60/EC, provided that all relevant conditions of the legislation in force are also met.

1. DOLJ COUNTY

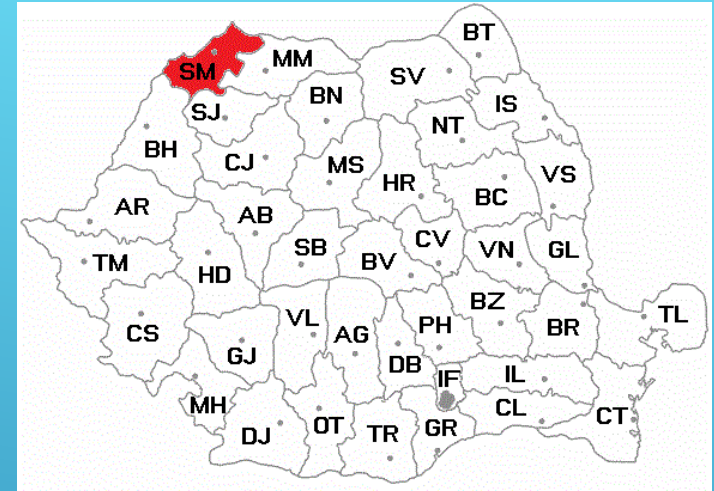
In the South part of Romania, Dolj county, there is an ASF infected area, in which several outbreaks have been confirmed in backyards, leading to movement restrictions on a pig breeding farm, starting with 24.06.2020.

The same operator also has 2 fattening farm located at 20 km, in the same restriction area as is shown in the map attached.



2. SATU MARE COUNTY

In the North East part of Romania, particularly in Satu Mare county, many outbreaks have been confirmed in domestic pigs from backyards and is also an infected zone as a result of wild boar cases evolution.



In July – September, at the peak of ASF evolution, a number of 69 outbreaks were confirmed in Satu Mare county. Thus, out of 16 commercial farms in the county, 12 are under movement restrictions, some for more than 2 months due to the successive outbreaks of ASF in non-professional farms. In some situations, pigs reached 145-160 kg. This has led to impaired animal welfare conditions, commercial farms are financially affected and the situation is dramatic, overall. Delivery with heat treatment can no longer be a solution due to the large number of farms that are unable to deliver.



At this moment, the minimum welfare norms can no longer be provided:

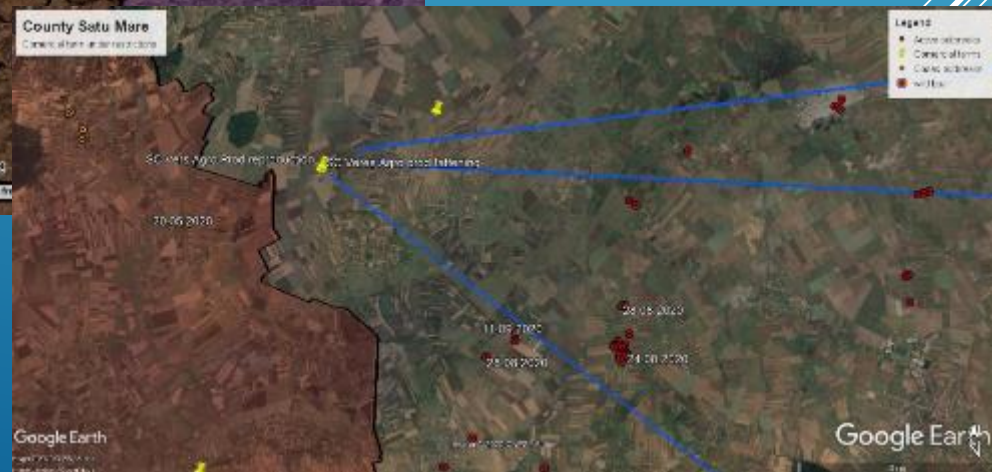
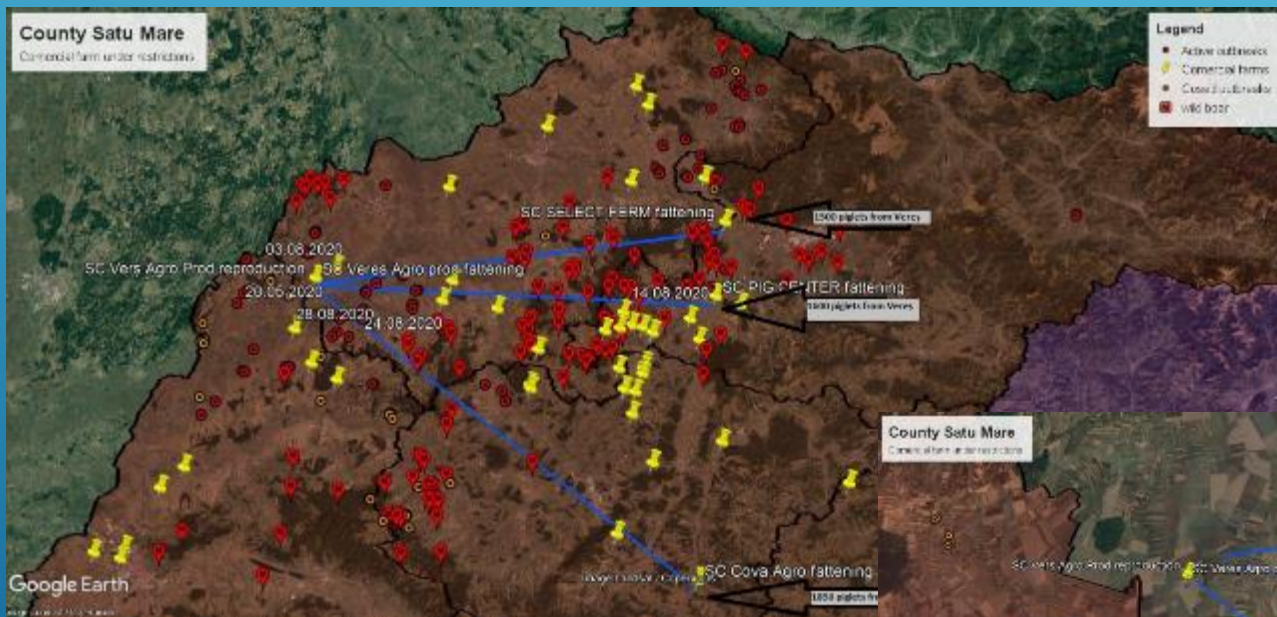
- ▶ density - pigs are crammed into boxes,
- ▶ a feeding front can no longer be provided so that all the pigs in the box can eat at the same time
- ▶ adequate rest of the pigs at the same time can not be ensured anymore
- ▶ behavioral changes began to be observed: aggression, cannibalism (they eat each others tails / ears),

The existing technology is overloaded and is not designed to operate in these conditions of overcrowding and exceeding the optimal weight of pigs:

- ▶ the ventilation system is overloaded to ensure the best possible air quality.
- ▶ their own feeding establishment is overloaded being needed to produce a quantity of 60 tons / day compared to a maximum need of 30 tons / day under normal conditions.
- ▶ the plastic floor in youth sector are under risks to break due to exceeding weight of the pigs

Motivated by the welfare conditions (high density, high temperatures, behavioral disorders like otophagy, caudophagy, etc.) we have to give a derogation, in accordance with Directive 2002/60/EC, art. 11, point 2, c). We have to approve the movement of 4950 fattening pigs to other 3 fattening farms, located in the immediate vicinity of Satu Mare County in areas with the similar epidemiological situation. We would like to highlight that the farm in question has been collaborating with these farms for a long time.

We also mention that the farm complies with the biosecurity conditions imposed by the competent authority and implements an intensive testing program for pigs in the direction of African swine fever.



The National Sanitary Veterinary and Food Safety Authority of Romania



THANK YOU FOR YOUR ATTENTION!
QUESTIONS?

