

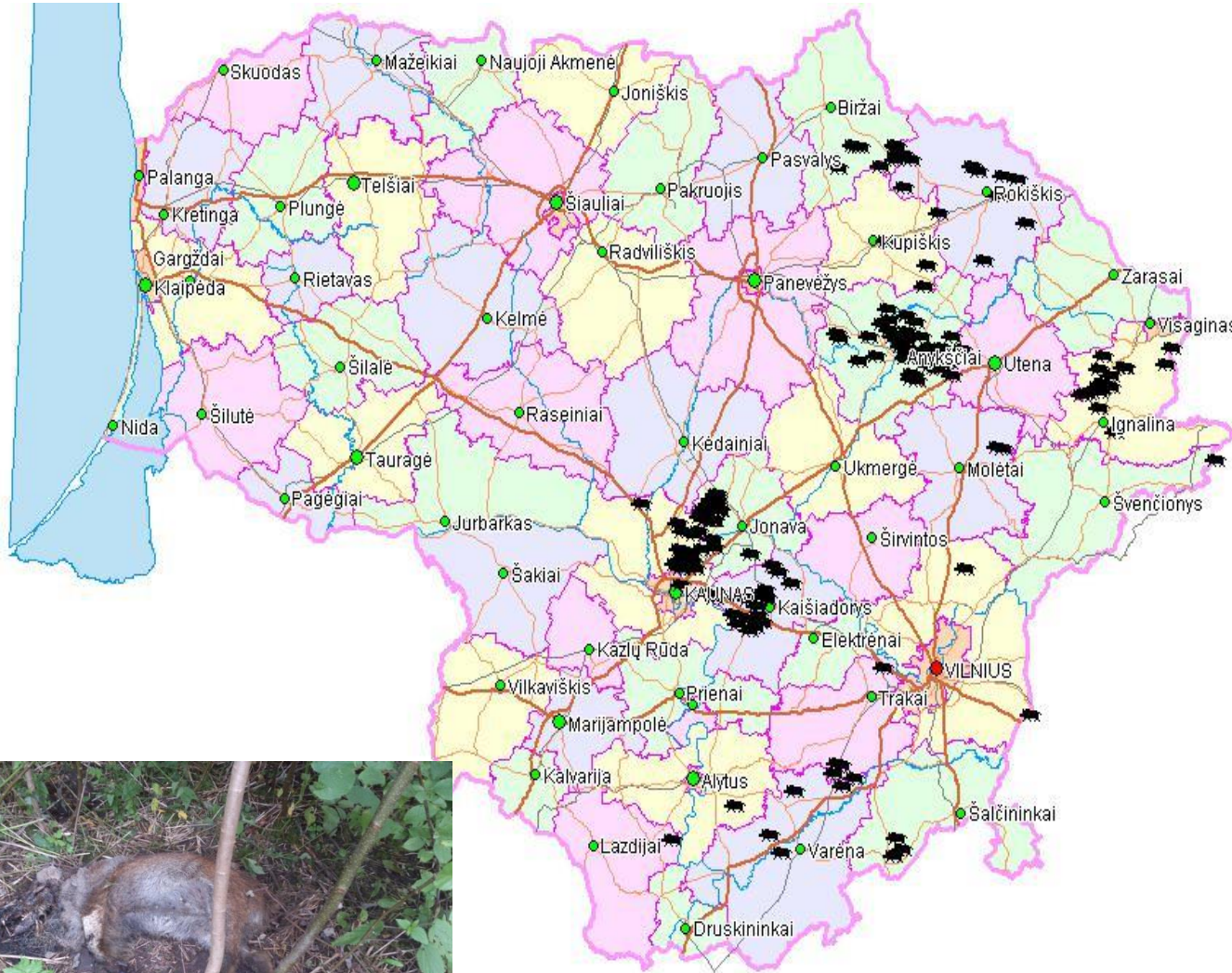
# African swine fever in Lithuania



**State Food and Veterinary Service,  
Lithuania**

**2016-09-13**

# ASF cases in wild boars in 2016



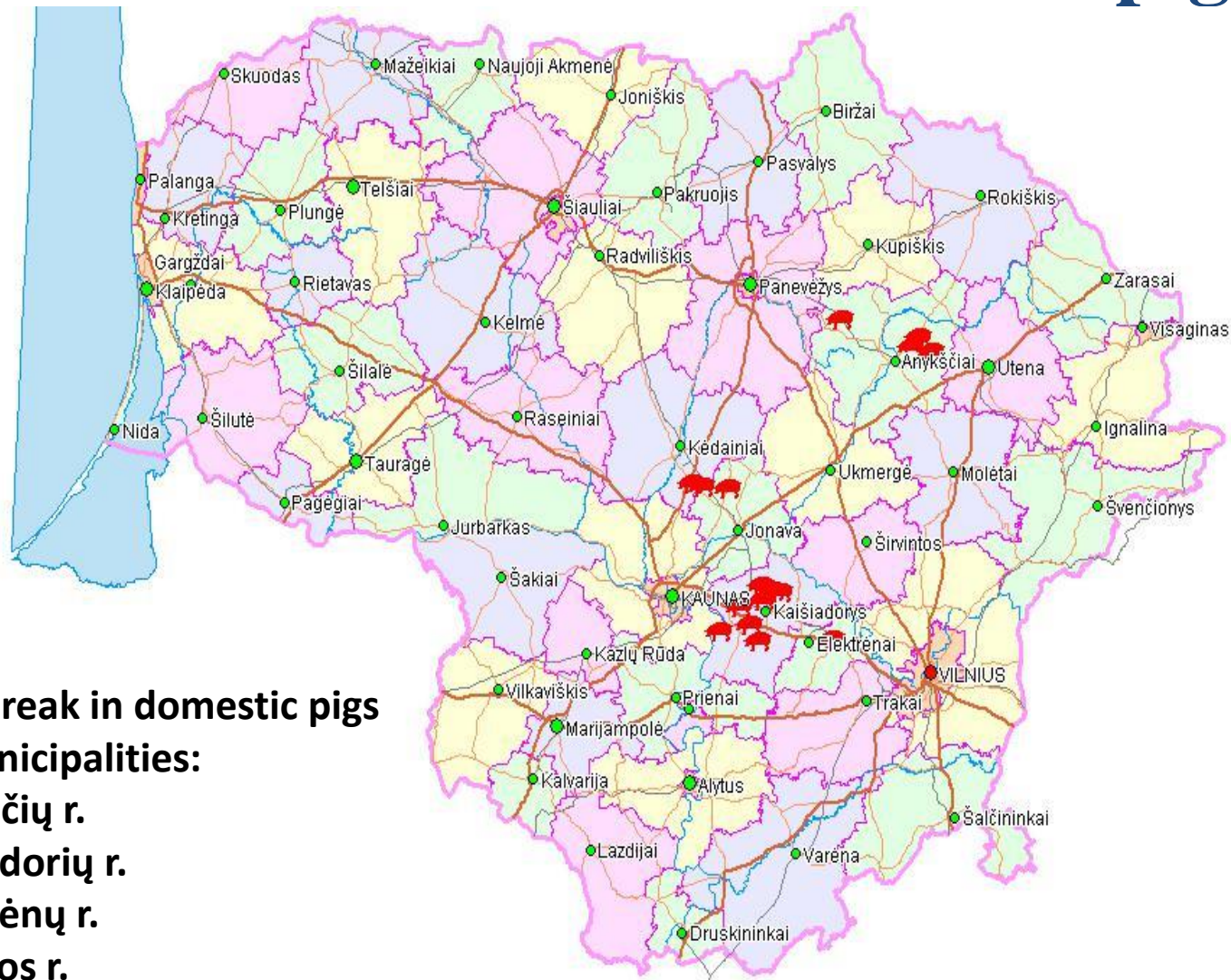
**208 places**  
**Total 322 wild boars**

**46 hunted**

**276 found dead**



# 18 ASF outbreaks in domestic pigs



**18 outbreak in domestic pigs  
in 5 municipalities:**

**4 Anykščių r.**

**9 Kaišiadorių r.**

**1 Elektrėnų r.**

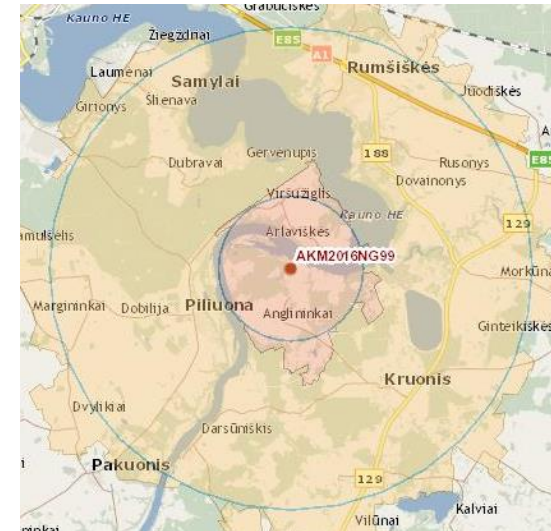
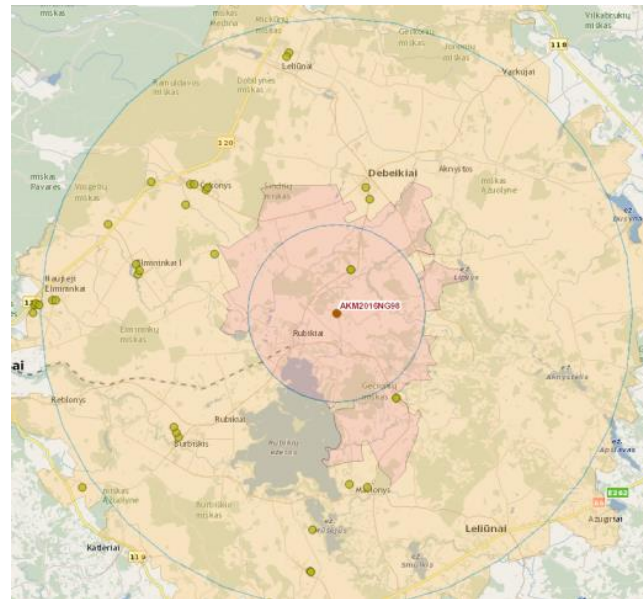
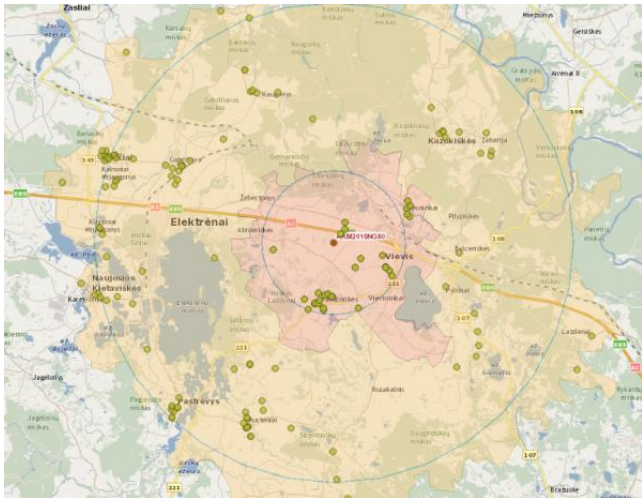
**2 Jonavos r.**

**2 Kėdainių r.**



# Measures taken in pig keeping places

- 3 km protection and 10 km surveillance zones were established in accordance with Directive 2002/60;
- A census of all pigs have been carried out;
- Cleaning and disinfection is carried out.



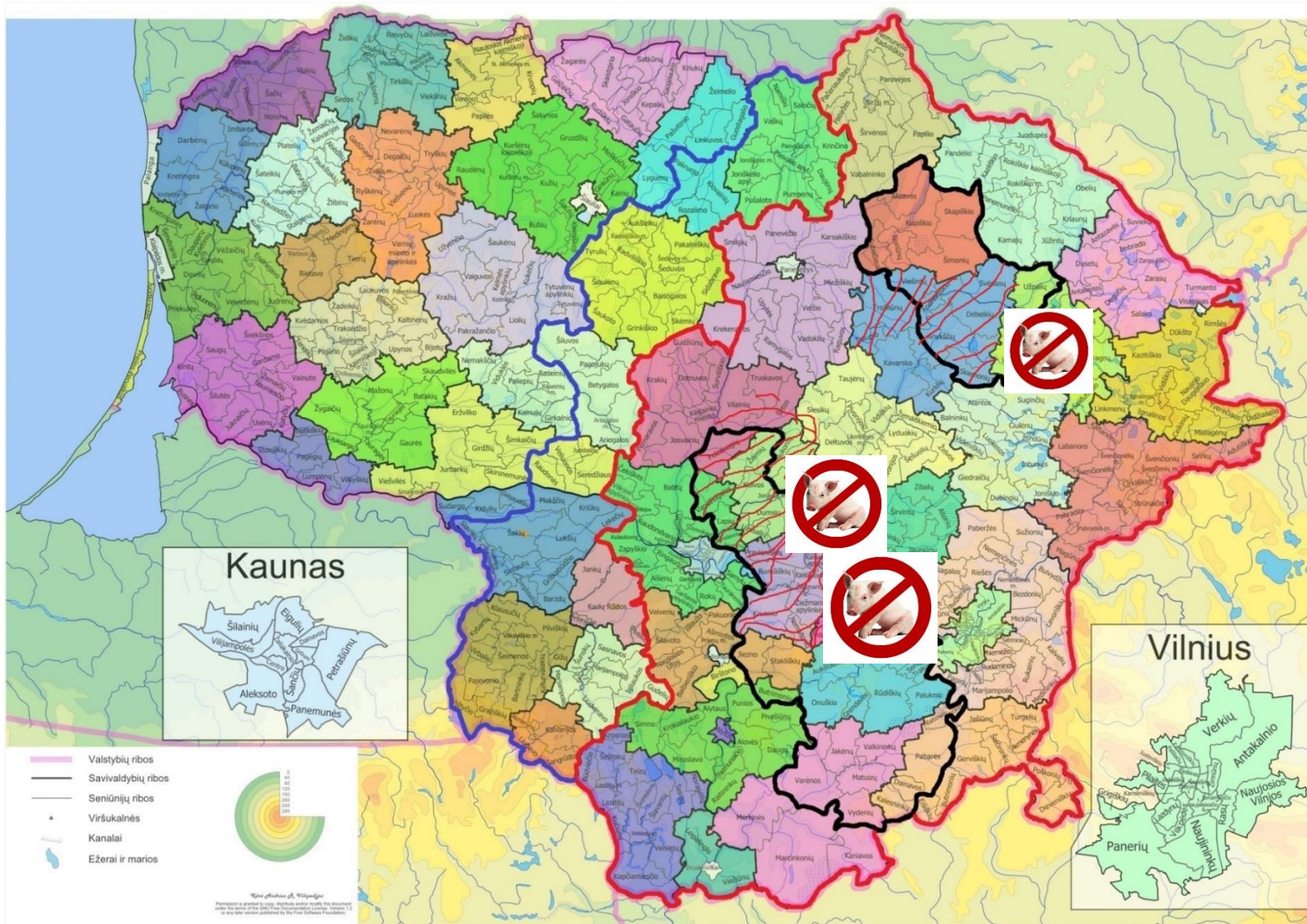
# SANTE/7112/2015

Based on main criteria for lifting the restrictions in areas in Parts I, II, III and IV of the Annex to Implementing Decision 2014/709/EU:

- there have been no ASF outbreak in domestic pigs during the past 12 months or,
- **in case of total depopulation of all non-commercial farms with low biosecurity conditions, the period without any outbreaks can be reduced to 3 months.**



# Regions were total depopulation (early slaughter) is performed



# Total depopulation (early slaughter)

Due to ASF outbreaks in 4 different municipalities the following measures are applied:

- Pig keeping places have been inspected
- All keepers of non commercial farms must early slaughter all pigs kept for own consumption
- Samples are taken by official veterinarian after inspection of slaughtered pig
- When negative results are received meat can be used for own consumption only.

Thank you for your attention