



© Ministerie van Landbouw, Natuur en Voedselkwaliteit

# Avian Influenza

## 2022

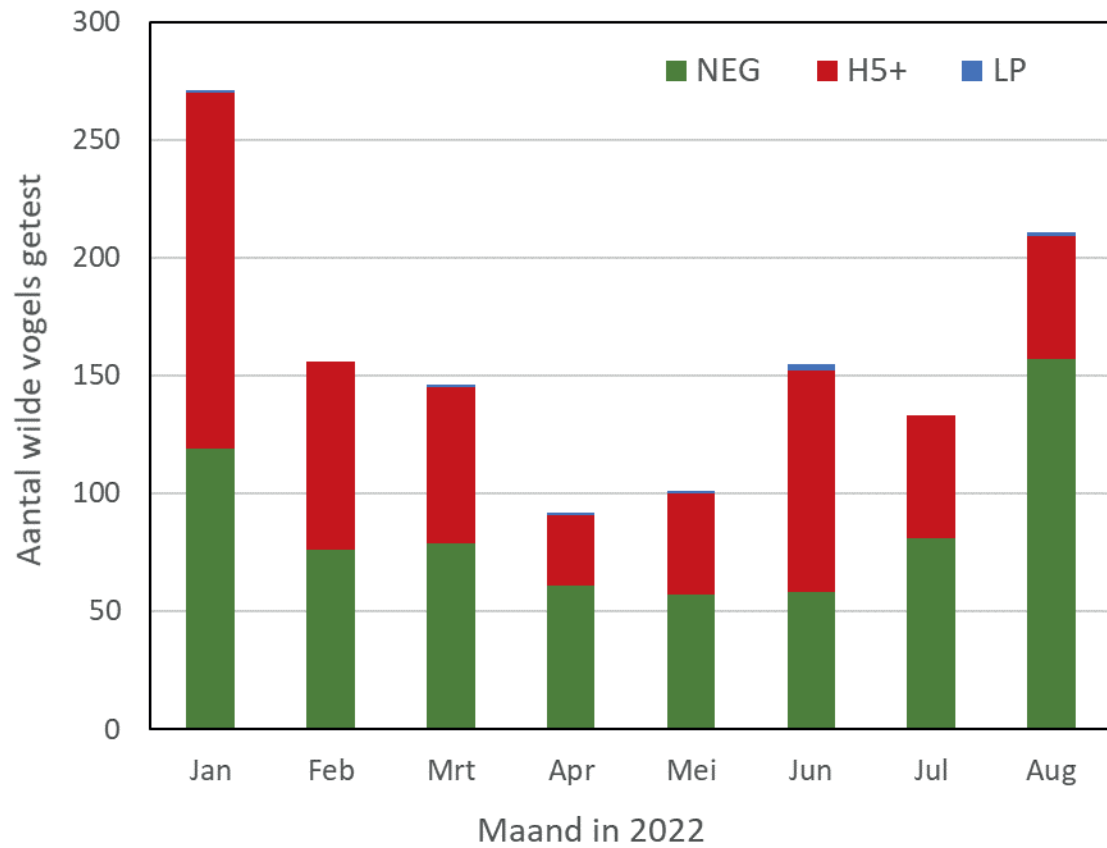
## The Netherlands

> Paul Leijs DVM MBA

14 September 2022



# Outbreak of HPAI in wild birds





# The virus pressure

- › The infected farms are generally located in wetlands
- › Phylogenetic research shows kinship with wild birds
- › Spread of the virus among:
  - new species including residential birds
  - Local variation in spread

This makes the virus pressure is unpredictable and does not appear to have gotten any lower.



Status 07-07-2022



Status 09-09-2022





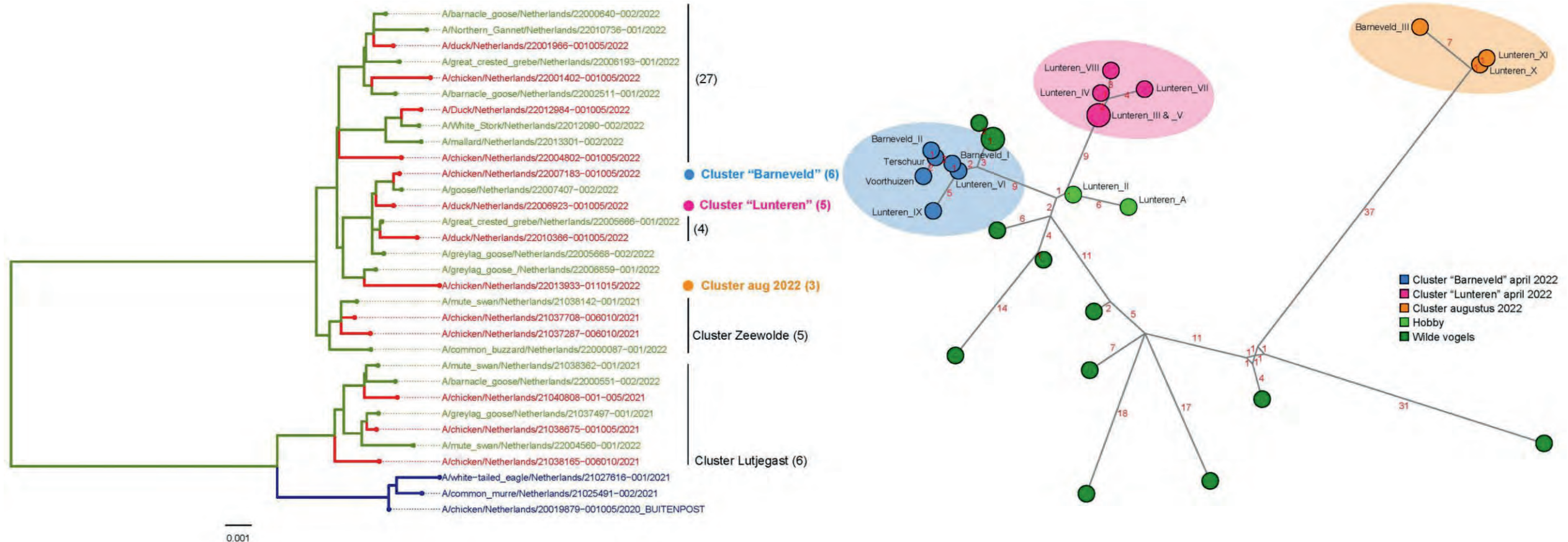
## Infections of HPAI since last Scopaff

# Infection	Location	Status	Contamination date	KM	KM	Kind of poultry location	Date of culling and 1st C&S	Type
59	Minnertsga	Opgeheven	26-7-2022	3	10	Broilers	28-7-2022	H5N1
60	Dalfsen I	Opgeheven	28-7-2022	3	10	Meat ducks	29-7-2022	H5N1
61	Dalfsen II	Opgeheven	31-7-2022	3	10	Broiler parent stock	1-8-2022	H5N1
62	Dalfsen III	Opgeheven	1-8-2022	3	10	Laying hens	3-8-2022	H5N1
63	Lunteren X	Geldend	14-8-2022	3	10	Laying hens	14-8-2022	H5N1
64	Schore	Geldend	15-8-2022	3	10	Laying hens	17-8-2022	H5N1
65	Maurik	Geldend	17-8-2022	3	10	Broilers Grand parent stock	18-8-2022	H5N1
66	Vlaardingen	Geldend	17-8-2022	3	10	Petting farm	17-8-2022	H5N1
67	Lunteren XI	Geldend	18-8-2022	3	10	Meat ducks parent stock	18-8-2022	H5N1
68	Abbekerk	Geldend	23-8-2022	3	10	Hobby	24-8-2022	H5N1
69	Spijkenisse	Geldend	25-8-2022	3	10	Petting farm	25-8-2022	H5N1
70	Ter Aar	Geldend	27-8-2022	3	10	Hobby	27-8-2022	H5N1
71	Bunschoten	Geldend	1-9-2022	3	10	Hobby	1-9-2022	H5N1
72	Blije II	Geldend	1-9-2022	3	10	Broilers	3-9-2022	H5N1
73	Barneveld III	Geldend	1-9-2022	3	10	Laying hens	2-9-2022	H5N1
74	Hebelermeer (DE)	Geldend	1-9-2022	3	10	Broilers	1-9-2022	H5N1
75	Ried	Geldend	2-9-2022	3	10	Broilers	4-9-2022	H5N1
76	Wieringerwerf	Geldend	5-9-2022	3	10	Hobby	5-9-2022	H5N1
77	Laar DE	Geldend	6-9-2022	3	10	Turkey	6-9-2022	H5N1
78	Barneveld IV	Geldend	6-9-2022	3	10	school for agricultural education	7/8-9-2022	H5N1
79	De Krim	Geldend	8-9-2022	3	10	Broiler parent stock	9-9-2022	H5N1

All measures according 2016/429 and 2020/687 have been taken.



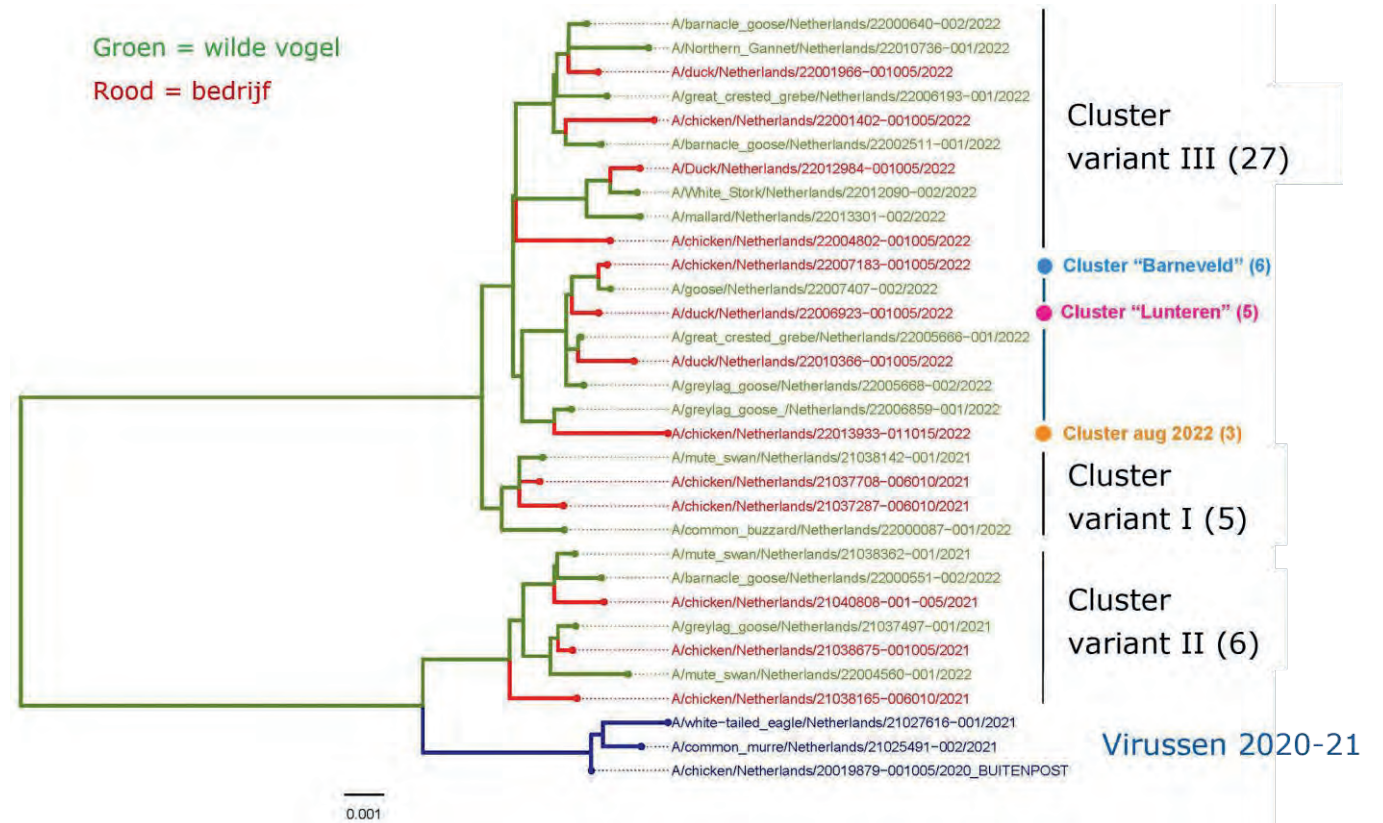
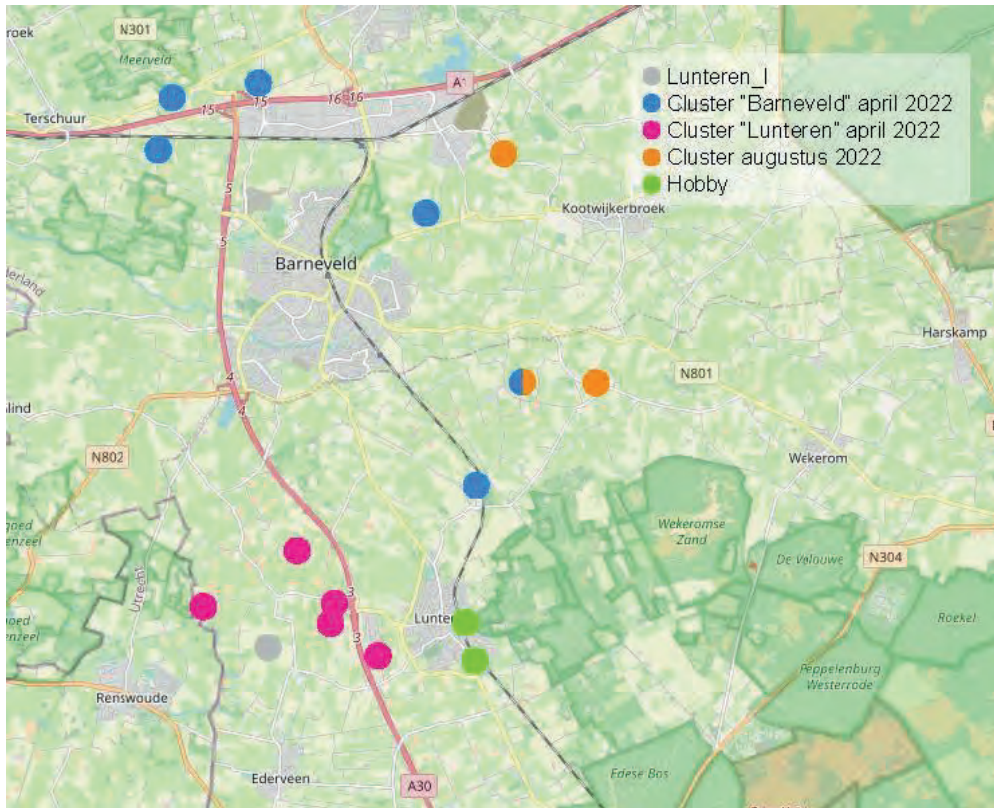
# Are there indications of virus spread between infected farms?







# Are there indications of virus spread between infected farms?



Yes, but most farms are separately infected by wild birds



# Change in pattern

## HPAI 2014

Start 15-11-2014  
End 30-12-2014

H5N8

- 5 infected farms

- 3 preemptive culling's

Total amount of animals:  
338.000

Infected: 245.600  
Preemptive: 92.400

## HPAI 2016-2017

Start 25-11-2016  
End 26-01-2017

H5N8

- 9 infected farms

- 10 preemptive culling's

Total amount of animals:  
717.727

Infected: 221.332  
Preemptive: 496.395

## HPAI 2020/2021

Start 29-10-2020  
End 22-06-2021

H5N8

- 11 infected farms

- 1 small farm <250 animals

- 1 hobby location

- 4 preemptive culling's

Total amount of animals:  
690.374

Infected: 536.096  
Preemptive: 128.646





# Compared with the season HPAI H5N1 2021/2022



Start: 25-10-2021

End: ???

- 60 Infected farms
- 13 infected hobby locations > 50 dieren
- 11 infected hobby locations < 50 dieren
- 37 preemptive **culling's**
- 4 contacts culled found by tracing
- Total culled:

3.524.666 animals

2.815 animals

292 animals

978.816 animals

44.589 animals

4.551.178 animals





# Important observations

- > Quick notifications
  - Just a slight increase of the normal amount of dead animals
  - Not a spread of dead animals but in a defined area of the stable.
  - Farms with more than one stable the outbreak is still limited in one.
- > Quick culling of the infected animals
  - Time between notification of the disease and finishing culling of the animals is limited
    - 2003: 2,6 days (0-16)
    - 2021/2022: 0,9 days (0-2)
- > Challenges
  - 3 and 10 km Zone around small farms huge consequences
  - Imminent shortage of CO2
  - Imminent shortage staff





Thank you for your  
attention