



Regionalisation of Romania for EIA

Decision 2010/346/EU

SANTE/7188/2019 Rev.2

PAFF 24 September 2019



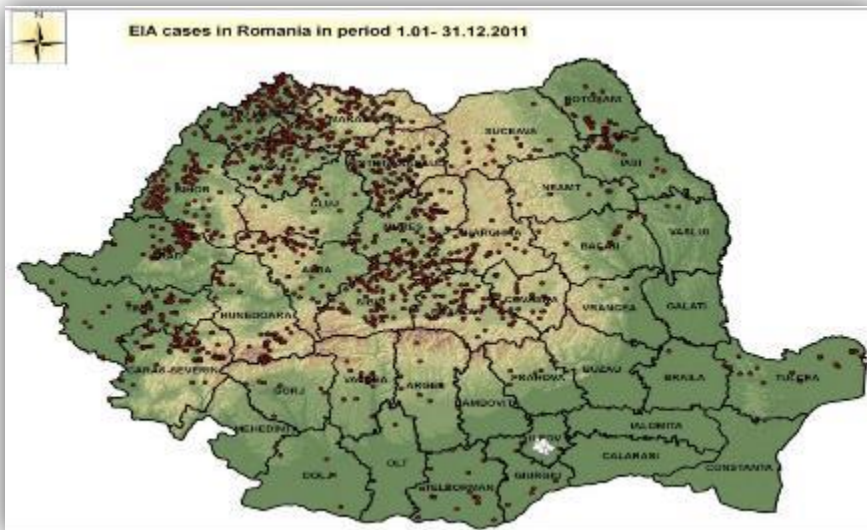
ROMANIA

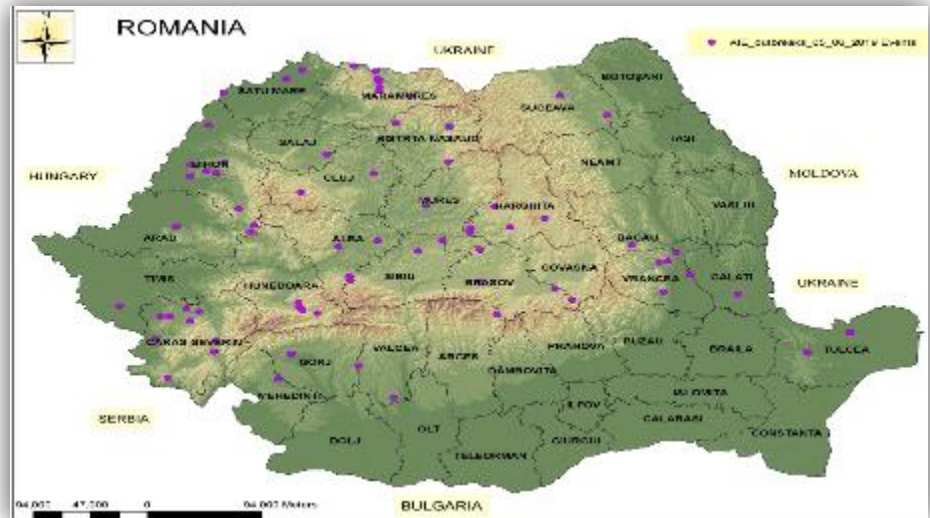
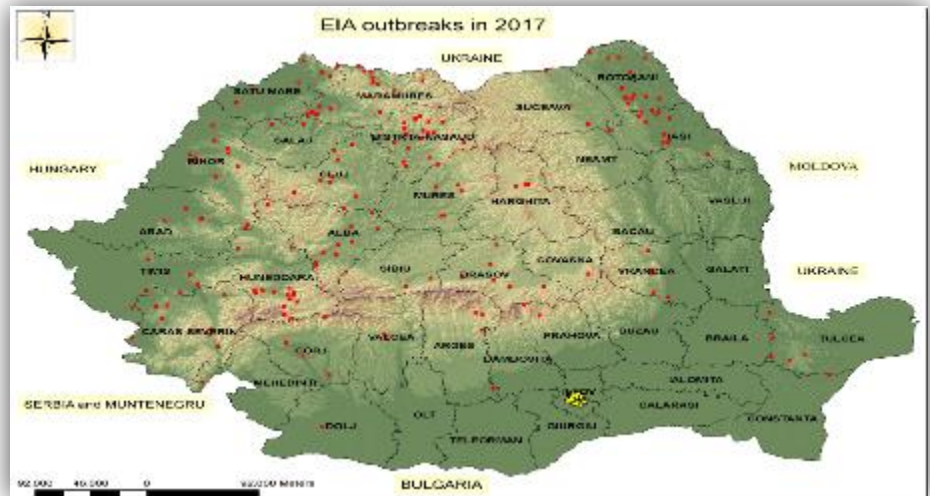
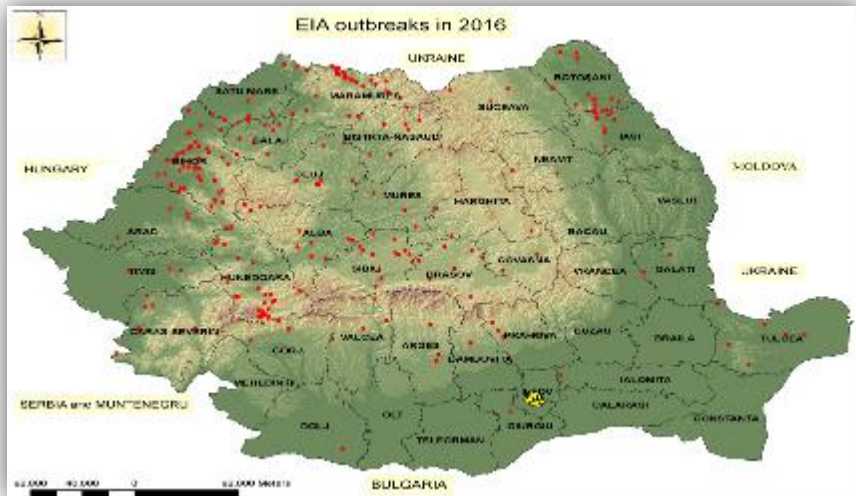
EIA Outbreaks 2018 - 2019

● EIA_2019_outbreaks

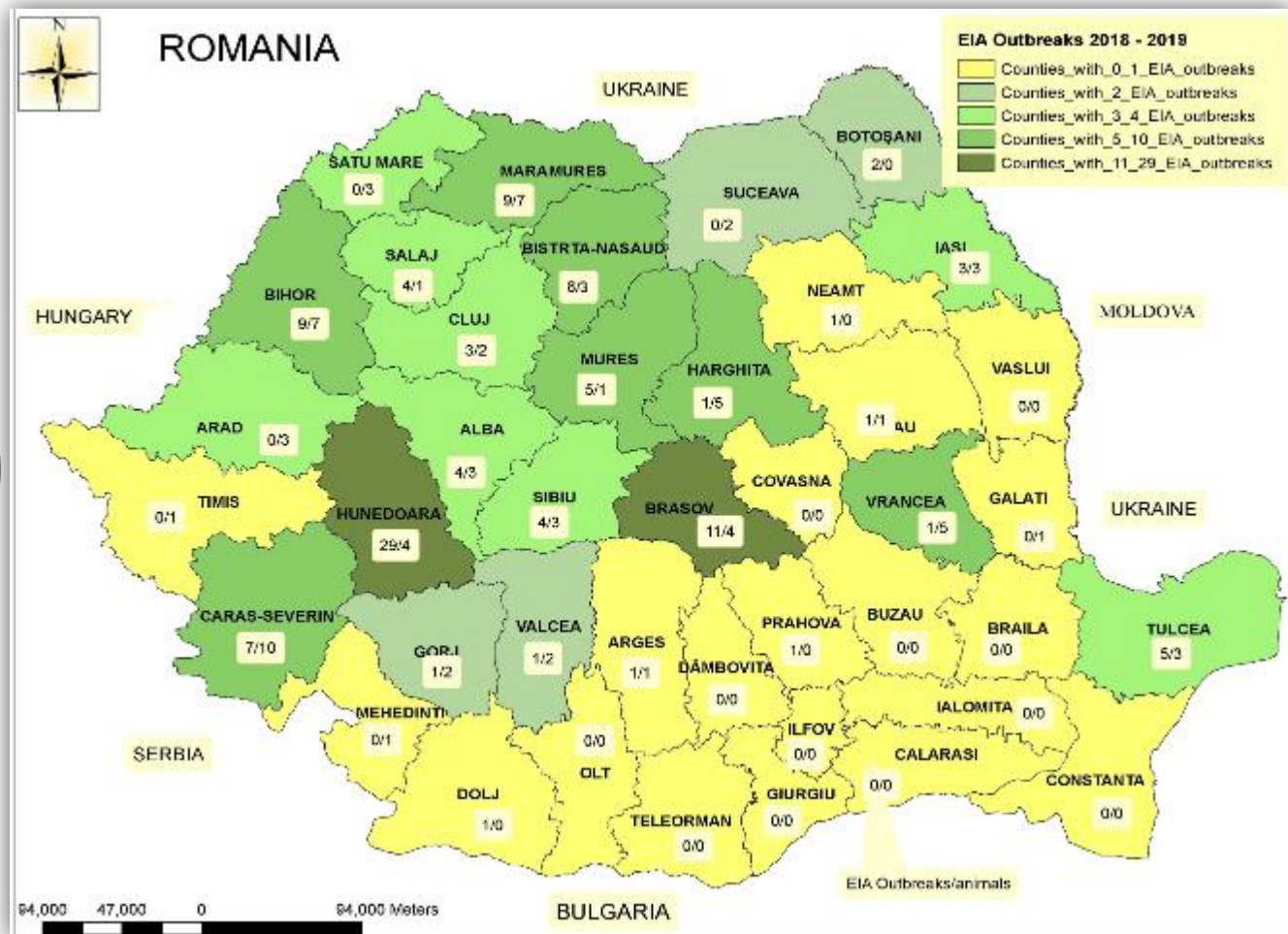


Comparative maps – EIA outbreaks per year





Distribution of EIA outbreaks confirmed in 2018 - 2019



Counties with sporadic outbreaks within 2018-2019 (0 – 1 outbreaks)

Counties with 0 to 1 EIA outbreaks during 2018-2019			
No	County	No of EIA outbreaks	No of EIA animals
1	Braila	0	0
2	Bucuresti	0	0
3	Buzau	0	0
4	Calarasi	0	0
5	Constanta	0	0
6	Covasna	0	0
7	Dambovita	0	0
8	Giurgiu	0	0
9	Ialomita	0	0
10	Ilfov	0	0
11	Olt	0	0
12	Teleorman	0	0
13	Timis	0/1	0/1
14	Vaslui	0	0
15	Arges	1/1	1/1
16	Bacau	1/1	1/1
17	Dolj	1/0	1/0
18	Galati	0/1	0/1
19	Mehedinti	0/1	0/1
20	Neamt	1/0	1/0
21	Prahova	1/0	1/0

