



EUROPEAN COMMISSION
HEALTH & CONSUMERS DIRECTORATE-GENERAL

Unit 04 - Veterinary Control Programmes

SANCO/10409/2009

*Programmes for the eradication, control and monitoring of certain
animal diseases and zoonoses*

Eradication programme of Enzootic Bovine Leucosis

Approved* for 2010 by Commission Decision 2009/883/EC

Lithuania

* in accordance with Council Decision 2009/470/EC



**LIETUVOS RESPUBLIKOS
VALSTYBINĖ MAISTO IR VETERINARIJOS TARNYBA**

STATE FOOD AND VETERINARY SERVICE REPUBLIC OF LITHUANIA

**APPLICATION FOR COMMUNITY FINANCING FOR CONTROL AND
SURVEILLANCE PROGRAMME OF ENZOOTIC BOVINE LEUCOSIS IN
LITHUANIA FOR 2010**

LITHUANIA, 2009

1. IDENTIFICATION OF THE PROGRAMME

Member State: Lithuanian Republic

Disease: Enzootic bovine leucosis

Year of implementation: from 1st of January 2010 to 31st December of 2010

Reference of this document: _____

Contact: V. Paulauskas; phone + 370 5 2404363; fax + 370 5 2404362; E-mail: vpaulauskas@vet.lt; vvt@vet.lt

Date sent to the Commission: 29 of April, 2009

2. HISTORICAL DATA ON THE EPIDEMIOLOGICAL EVOLUTION OF THE DISEASE

Enzootic bovine leucosis is compulsory notifiable disease in Lithuania. Eradication programme for EBL has been carried out in accordance with the requirements of the Council Directive of 26 of June 1964 on animal health problems affecting intra-Community trade in bovine animals and swine 64/432/EEC /EEB, Council Directive of 17 May 1977 introducing community measures for the eradication of brucellosis, tuberculosis and leucosis in cattle 77/391/EEC and Council Directive of 13 December 1977 establishing the community criteria for national plans for the accelerated eradication of brucellosis, tuberculosis and enzootic leucosis in cattle 78/52/EEC.

State Food and Veterinary Service taking account to the epidemiological situation and the results of the risk analysis approves annual EBL eradication plan.

The main measures applied in accordance with this plan are as follows:

- control of the correct registration of bovine herds and identification of bovine animals in accordance with Council Directive of 27 November 1992 on the identification and registration of animals 92/102/EEC;
- testing bovine herds for EBL by AGID and ELISA test in accordance with requirements set up in Annex D of the Council Directive 64/432/EEC /EEC;
- compulsory notification of the presence and suspected presence of EBL and tumors of the lymphatic system and other organs of bovine animals;
- certification of bovine herds according the health status and movement control of bovine animals in accordance with requirements set up in Annex D of the Council Directive 64/432/EEC /EEB;
- when the presence of EBL is officially confirmed in a herd, the appropriate measures should be applied in accordance with requirements of the Council Directive 78/52/EEC;
- compulsory slaughtering of EBL virus infected bovine animals as soon as possible after notification of the results of the examination.

Therapeutic treatment or anti-leucosis vaccination of any kind is prohibited.

During 2008 13324 blood samples and 76207 milk samples were tested. 73 herds were positive for EBL.

3. DESCRIPTION OF THE SUBMITTED PROGRAMME

The enzootic bovine leucosis control and surveillance programme is implemented by the Lithuanian State Food and Veterinary Service on a multi-annual basis until eradication of the disease will be succeeded. This document is part of a long-term scheme and describes actions for the year 2010.

The effectiveness of the control and surveillance measures and the achievement of the targets of the program is based on the test and slaughter policy. All bovine animals in a herd over the age of 24 months are subjected to laboratory investigation of two tests carried out at an interval of at least four month. All positive animals will be slaughtered.

4. MEASURES OF THE SUBMITTED PROGRAMME

4.1. Summary of measures under the programme

First year: 2004

Last year: 2010

x Control

- Testing
- Slaughter of positive animals
- Killing of positive animals
- Vaccination
- Treatment
- Disposal of products

Monitoring or surveillance

Other measures

x Eradication

- Testing
- Slaughter of positive animals
- Killing of positive animals
- Extended slaughter or killing
- Disposal of products

4.2. Designation of the central authority charged with supervising and coordinating the department responsible for implementing the programme:

The authority responsible for the co-ordination of control and surveillance of enzootic bovine leucosis in the entire country, is the State Food and Veterinary Service of the Republic of the Lithuania

The Animal Health and Welfare Department is responsible for the co-ordination and control of country and district State Food and Veterinary Services involved in the implementation of this program. This department collects the data, performs statistical analysis and evaluation of the surveillance program and informs the relevant authorities in European Union about the progress of the control and surveillance program.

4.3. Description and delimitation of the geographical and administrative areas in which the programme is to be implemented:

The enzootic bovine leucosis control and surveillance program from 1st of January 2010 to 31st December of 2010

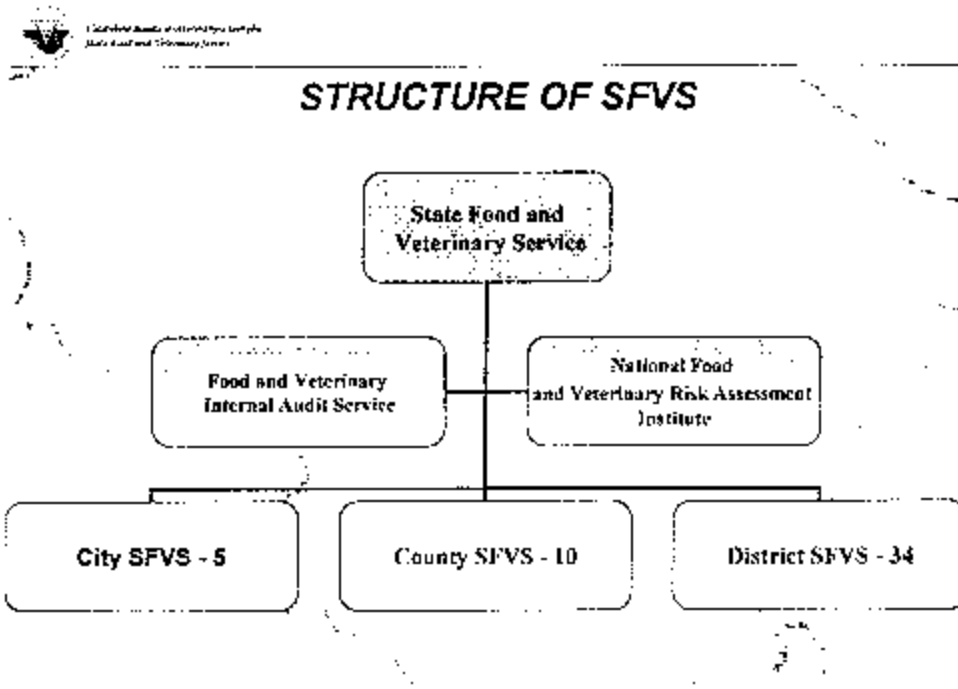
EBL eradication takes place in the whole territory of the Republic of Lithuania.

4.3.1. The institutions that are subordinate to the State Food and Veterinary Service:

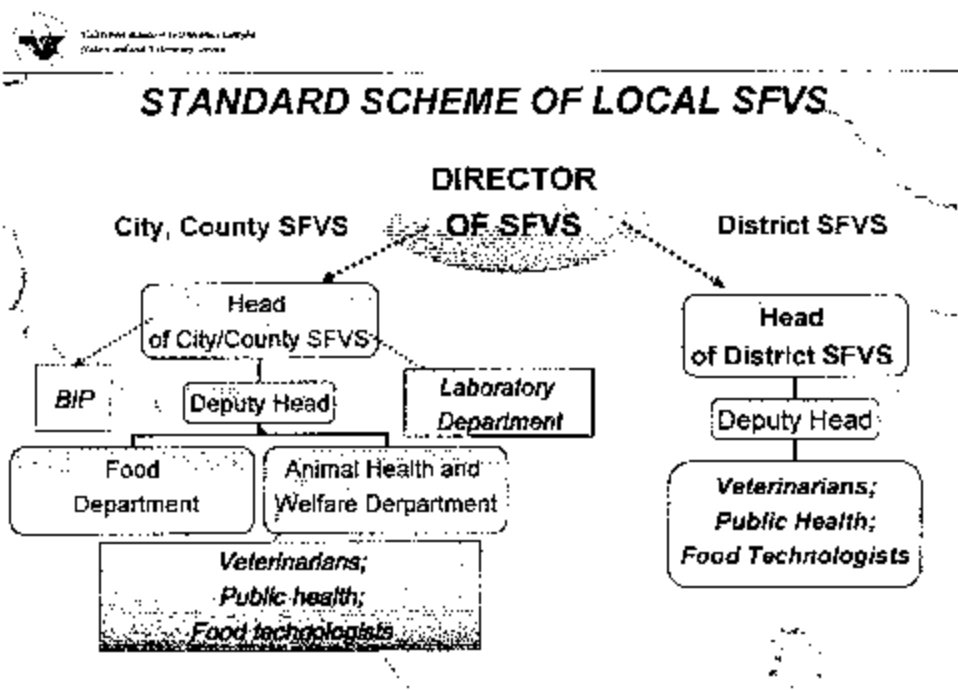
National Food and Veterinary Risk Assessment Institute

Food and Veterinary Audit Department

and State Food and Veterinary Services of 10 counties, 5 cities and 34 districts.



The structure of the SFVS of Lithuania is based on the principle of a pyramid topped by the headquarters at the national level, county, city and district SFVS – at the regional level and supported by laboratories and border inspection posts.



4.4. Measures implemented under the programme

4.4.1. Measures and terms of legislation as regards the registration of holdings

The Order of the Director of the State Food and Veterinary Service (13 February 2003 No B1-1143) lays down the requirements for animal holding control according to regulation (EC) 1760/2000

4.4.2. Measures and terms of legislation as regards the identification of animals

The Order of the Ministry of Agriculture was adopted (16 June 2003 No. 3D-234) and the SFVS was nominated as the competent institution responsible for the implementation of animal identification and registration system in the Republic of Lithuania.

Regulation (EC) No 1760/2000 of the European Parliament and of the Council of 17 July 2000 establishing a system for the identification and registration of bovine animals and regarding the labelling of beef and beef products and repealing Council Regulation (EC) No 820/97

Commission Regulation (EC) No 911/2004 of 29 April 2004 implementing Regulation (EC) No 1760/2000 of the European Parliament and of the Council as regards cartags, passports and holding registers

4.4.3. Measures and terms of legislation as regards the notification of the disease

According The Law on Veterinary Activities No I-2110 (of 17 December 1991), with amendments by the Law No VIII 1350 (of 7 October 1999) and by the Law No VIII-1793 (of 4 July 2000) and Order of the Director of State Food and Veterinary Service On Regulation on the notification of animal diseases in the Republic of Lithuania, the animal keeper or private veterinarian or anybody who suspects infectious animal disease without delay shall report every suspected case to SFVS. On receiving a report of the presence or suspected presence of animal disease, on a livestock holding or in any other place, the official veterinarian in whose area the holding is located must immediately ensure that an investigation is set in motion to confirm or rule out the presence of the disease and to place the suspect holding under surveillance.

4.4.4. Measures and terms of legislation as regards the measures in case of the positive results.

„Control program of contagious animal diseases“ approved by director of the State Food and Veterinary Service by the order no b1-281of april 12, 2006.

According to the control and surveillance program, all bovine animals in a herd over the age of 24 months blood are subjected to laboratory investigation, aiming at retaining and/or restoring the enzootic bovine leucosis officially free health status as ruled by Directive 64/432/EEC. The calves of positive cows are reared for meat.All positive animals will be slaughtered.

4.4.5. Measures and terms of legislation as regards the different qualification of animals and herds

A. Officially enzootic-bovine-leucosis -free herd means a herd in which:

- (i) there is no evidence, either clinical or as a result of a laboratory test, of any case of enzootic bovine leucosis in the herd and no such case has been confirmed in the previous two years; and
- (ii) all animals over 24 months of age have reacted negatively during the preceding 12 months to two tests carried out, at an interval of at least four months; or
- (iii) it meets the requirements of (i) above and is situated in an officially enzootic-bovine-leucosis -free country or region.

B. A herd shall retain officially enzootic-bovine-leucosis -free status provided:

- (i) the condition in A(i) continues to be fulfilled;
- (ii) any animals introduced into the herd come from an officially enzootic-bovine-leucosis -free herd;
- (iii) all animals over 24 months of age continue to react negatively to a test carried out in accordance with Chapter II of Directive 64/432/EEC /EEC at intervals of three years;
- (iv) breeding animals introduced into a herd and originating from a third country have been imported in accordance with Directive 72/462/EEC.

C. The officially leucosis -free status of a herd is to be suspended if the conditions detailed in B are not fulfilled, or where as a result of laboratory tests or on clinical grounds one or more bovine animals are suspected of having enzootic bovine leucosis and the suspect animal(s) are immediately slaughtered.

D. The status is to remain suspended until the following requirements are complied with:

1. If a single animal in an officially enzootic-bovine-leucosis -free herd has reacted positively to one of the tests referred to in Chapter II, of Directive 64/432/EEC or where infection is otherwise suspected in one animal in a herd:

- (i) the animal which has reacted positively, and, in the case of a cow, any calf it may have produced, must have left the herd for slaughter under the supervision of the veterinary authorities;
- (ii) all animals in the herd more than 12 months old have reacted negatively to two serological tests (at least 4 months and less than 12 months apart) carried out in accordance with Chapter II of Directive 64/432/EEC three months at least after removal of the positive animal and any possible progeny thereof;
- (iii) an epidemiological inquiry has been conducted with negative results and the herds linked epidemiologically to the infected herd have been subjected to the measures laid down in (ii).

However, the competent authority may grant a derogation from the obligation to slaughter the calf of an infected cow where it was separated from its mother immediately after calving. In this case, the calf must be made subject to the requirements provided for in 2(iii).

2. Where more than one animal from an officially enzootic-bovine-leucosis -free herd has reacted positively to one of the tests referred to in Chapter II of Directive 64/432/EEC /EEC, or where infection has otherwise been suspected in more than one animal in a herd:

- (i) any animals which have reacted positively and, in the case of cows, their calves, must be removed for slaughter under the supervision of the veterinary authorities;
- (ii) all animals in the herd aged over 12 months must react negatively to two tests carried out in accordance with Chapter II at an interval of at least four months and no more than 12 months;

(iii) all other animals in the herd must, after identification, remain on the holding until they are aged over 24 months and have been tested in accordance with Chapter II of Directive 64/432/EEC after reaching that age, except that the competent authority may permit such animals to go directly for slaughter under official supervision;

(iv) an epidemiological inquiry has been conducted with negative results and any herd linked epidemiologically to the infected herd has been subjected to the measures laid down in (ii).

However, the competent authority may grant a derogation from the obligation to slaughter the calf of an infected cow where it was separated from its mother immediately after calving. In this case, the calf must be made subject to the requirements provided for in 2(ii).

E. In accordance with the procedure in Article 17 and on the basis of information supplied in accordance with Article 8 of Directive 64/432/EEC, a country or part of a country may be considered officially enzootic-bovine-leucosis -free if:

(a) all the conditions of paragraph A are fulfilled and at least 99,8 % of the bovine herds are officially enzootic bovine-leucosis -free;

or

(b) no case of enzootic bovine leucosis has been confirmed in the country or the part of the country for the past three years, and the presence of tumours suspected of being due to EBL is compulsorily notifiable, with investigations of cause being carried out, and in the case of a country, all animals aged over 24 months in at least 10 % of the herds, selected randomly, have been tested with negative results in accordance with Chapter II of Directive 64/432/EEC /EEC in the previous 24 months, or in the case of a part of a country, all animals aged over 24 months have undergone a test provided for in Chapter II of Directive 64/432/EEC /EEC with negative results in accordance with Chapter II of Directive 64/432/EEC /EEC in the previous 24 months;

or

(c) any other method which demonstrates to a confidence rating of 99 % that less than 0.2 % of herds were infected.

F. A country or a region is to retain officially enzootic-bovine-leucosis -free status if:

(a) all animals slaughtered within the territory of that country or region are submitted to official postmortem examinations at which all tumours which could be due to the EBL virus are sent for laboratory examination,

(b) the country reports to the Commission all cases of enzootic bovine leucosis that occur in the region,

(c) all animals which react positively to any of the tests provided for in Chapter II are slaughtered and their herds

remain subject to restrictions until re-establishment of their status in accordance with Section D, and

(d) all animals more than two years old have been tested, either once in the first five years after the status is granted under Chapter II of Directive 64/432/EEC /EEC or during the first five years after the grant of the status under any other procedure demonstrating with a certainty level of 99 % that less than 0,2 % of herds have been infected. However, where

no case of enzootic bovine leucosis has been recorded in a Member State or in a region of a country in a proportion of one herd out of 10 000 for at least three years, a decision may be taken in accordance with the procedure laid down in Article 17 of Directive 64/432/EEC

that routine serological tests may be reduced provided that all bovine animals more than 12 months old in at least 1 % of herds, selected at random each year, have been subjected to a test carried out in accordance with Chapter II of Directive 64/432/EEC /EEC.

G. The officially enzootic-bovine-leucosis -free status of a Member State or part of a Member State is to be suspended, in accordance with the procedure in Article 17 of Directive 64/432/EEC if, as a result of investigations carried out in accordance with paragraph F above, there is evidence of a significant change in the situation as regards enzootic bovine leucosis in a country or part of a country which has been recognised as officially enzootic-bovine-leucosis -free.

The officially enzootic-bovine-leucosis -free status may be restored in accordance with the procedure in Article 17 of Directive 64/432/EEC when the criteria laid down by the same procedure are fulfilled.

The test used for the investigation of enzootic bovine leucosis is immune-diffusion test or enzyme-linked immunosorbent assay (ELISA) under the conditions set in Directive 64/432/EEC /EEC, applied to all bovine animals over 24 months of age in officially enzootic-bovine-leucosis -free herds and all animals in the herd aged over 12 months in herds where infection is otherwise suspected as it is stated in the Annex D of the Directive 64/432/EEC .

4.4.6. Control procedures and in particular rules on the movement of animals liable to the affected or contaminated by a given disease and the regular inspection of the holdings or areas concerned

By Law on Veterinary Act, movement of all animals within Lithuania has to be notified to the SIVS. Animals must be examined by a private veterinarian within 24 hours of departure and a certificate issued to show that the animals comply with the requirements. The animals movement allowed only from officially enzootic-bovine-leucosis -free herds.

4.4.7. Measures and terms of legislation as regards the control of the disease

According to the control and surveillance program, all bovine animals in a herd over the age of 24 months blood are subjected to laboratory investigation, aiming at retaining and/or restoring the enzootic bovine leucosis officially free health status as ruled by Directive 64/432/EEC. All animals over 24 months of age have reacted negatively during the preceding 12 months to two tests carried out, at an interval of at least four months

Tests for enzootic bovine leucosis shall be carried out by the agar gel immune-diffusion test or by the enzyme-linked immunosorbent assay (ELISA) according provisions of the *CHAPTER II* Annex D Directive 64/432/EEC.

4.4.8. Measures and terms of legislation as regards the compensation for owners slaughtered and killed animals

Compensation procedure is foreseen in the Resolution of the Government of the Republic of Lithuania No.1220 of 16 October 2001 on the compensation of losses and expenses incurred by the contagious diseases of animals, eradication of their focuses (Official Gazette, No, 89-3129, 2001), Order of the Minister of Agriculture issued on 2 December 2008 No 3D-646 "Approval of Rules of Evaluation and Compensation of Losses in Case of Emergency".

Development of a list of contagious animal diseases upon the occurrence of which livestock and other animals must be subjected to emergency slaughter or destruction,

products and raw materials of animal origin must be decontaminated or destroyed and the losses incurred to the owners must be compensated and the expenses of the eradication of the disease focus must be covered, is foreseen. At present not all costs are covered if animals are not insured on private initiative.

Before slaughtering a committee will evaluate a live animal's and propose the amount of compensation. The committee is constituted of a Veterinarian of District State Food and Veterinary Service, an Officer of the District Agriculture Service and a representative of farmers.

After evaluation of losses the report of the committee must be sent to the Ministry of Agriculture. The Ministry of Agriculture prepares the report to the Lithuanian Government. The Lithuanian Government, taking into account report of the Ministry of the Agriculture, will issue Resolution "On losses compensation to the farmer", and the compensation is paid from the Government reserve fund for emergencies.

The Ministry of Agriculture defines the amount of compensation that cannot be greater than the market price of the animal, and it depends on the breed and the degree of genetic improvement of the animal. The compensation for the animals which will be slaughtered in the framework of animal diseases control program must be paid to the owner within 90 days after the slaughter of the animals. The average amount of reimbursement for bovine animals shall not exceed 300 EUR

5. GENERAL DESCRIPTION OF THE COSTS AND BENEFITS

The effectiveness of the control and surveillance measures and the achievement of the targets of the program is based on the test and slaughter policy. According to the control and surveillance program, all bovine animals in a herd over the age of 12 months blood are subjected to laboratory investigation, aiming at retaining and/or restoring the enzootic bovine leucosis officially free health status as ruled by Directive 64/432/EEC . All positive animals will be slaughtered.

The total cost for the implementation of the enzootic bovine leucosis control and surveillance campaign in 2010 is estimated about 295500,00 EUR.

6. DATA ON THE EPIDEMIOLOGICAL EVALUATION DURING THE LAST TEN YEARS

6.1. Evaluation of the disease

6.1.1. Data on evaluation of disease

6.1.1.1. Data on herds

Year: 1998

Situation on date 1998 12 31

Disease: Enzootic Bovine Leucosis

Animal species: Cattle

Region	Total number of herds	Total number of herds under programme	Number of herds checked	Number of positive herds	Number of new positive herds	Number of herds depopulated	% positive herds depopulated	INDICATORS			
								% herd coverage	% herds	positive herds	% new positive herds
1	2	3	4	5	6	7	8=(7/5)x100	9=(4/3)x100	10=(5/4)x100	11=(6/4)x100	
Alytus	18300	18300	18300	82	0	16	19.5	100	0.44	0.44	
Kaunas	37344	37344	37344	426	0	266	62.4	100	1.14	1.14	
Klaipeda	25032	25032	25032	152	0	32	21	100	0.6	0.6	
Marijampole	21774	21774	21774	1648	0	1350	81.9	100	7.56	7.56	
Panevezys	29216	29216	29216	978	0	430	43.9	100	3.34	3.34	
Taurage	26215	26215	26215	1507	0	541	35.9	100	5.74	5.74	
Telsiai	18310	18310	18310	509	0	219	43	100	2.78	2.78	
Siauliai	15940	15940	15940	262	0	50	19	100	1.64	1.64	
Utena	23227	23227	23227	1507	0	760	50.4	100	6.48	6.48	
Vilnius	29557	29557	29557	569	0	141	24.8	100	1.92	1.92	
Total	244915	244915	244915	7640	0	3805	49.8	100	3.11	3.11	

Year: 1999
 Disease: Enzootic Bovine Leucosis
 Situation on date 19991231
 Animal species: Cattle

Region	Total number of herds	Total number of herds under programme	Number of herds checked	Number of positive herds	Number of positive herds	Number of new positive herds	Number of herds depopulated	INDICATORS			
								% positive herds depopulated	% herd coverage	% positive herds	% new positive herds
I	2	3	4	5	6	7	$8=(7/5) \times 100$	$9=(4/3) \times 100$	$10=(5/4) \times 100$	$11=(6/4) \times 100$	
Alytus	17803	17803	17803	66	0	16	24,24	100	0,37	0	
Kaunas	34145	34145	34145	160	0	40	25	100	0,46	0	
Klaipeda	25032	25032	25032	120	0	56	46,66	100	0,47	0	
Marijampole	21149	21149	21149	298	0	118	39,59	100	1,40	0	
Panevezys	28593	28593	28593	548	0	239	43,61	100	1,91	0	
Taurage	34238	34238	34238	966	0	294	30,43	100	2,82	0	
Telsiai	18285	18285	18285	290	0	105	36,20	100	1,58	0	
Siauliai	16646	16646	16646	212	0	26	12,26	100	1,27	0	
Utena	22418	22418	22418	747	0	271	36,27	100	3,33	0	
Vilnius	28418	28418	28418	428	0	137	32,00	100	1,50	0	
Total	246727	246727	246727	3835	0	1302	33,95	100	0,52	0	

Year:2000
 Disease: Enzootic Bovine Leucosis
 Situation on date 2000 12 31
 Animal species: Cattle

Region	Total number of herds	Total number of herds under programme	Number of checked herds	Number of positive herds	Number of new positive herds	Number of herds depopulated	% positive herds depopulated	INDICATORS		
								% herd coverage	% positive herds	% new positive herds
1	2	3	4	5	6	7	$8=(7/5) \times 100$	$9=(4/3) \times 100$	$10=(5/4) \times 100$	$11=(6/4) \times 100$
Alytus	19012	19012	19012	50	0	20	40	100	0,26	0
Kaunas	33110	33110	33110	120	0	52	43,33	100	0,36	0
Klaipeda	26305	26305	26305	81	17	64	79	100	0,30	0,06
Marijampole	22330	22330	22330	180	0	42	23,33	100	0,80	0
Panevezys	27599	27599	27599	309	0	218	70,55	100	1,11	0
Taurage	33015	33015	33015	672	0	120	17,85	100	2,03	0
Telsiai	19050	19050	19050	185	0	83	44,86	100	0,97	0
Siauliai	17240	17240	17240	186	0	111	59,67	100	1,07	0
Utena	21845	21845	21845	476	0	333	69,95	100	2,17	0
Vilnius	28828	28828	28828	291	0	144	49,48	100	1,00	0
Total	248334	248334	248334	2550	17	1187	47,53	100	1,02	0,06

Year:2001
 Disease: Enzootic Bovine Leucosis
 Situation on date 2001 12 31
 Animal species: Cattle

Region	Total number of herds	Total number of herds under programme	Number of herds checked	Number of positive herds	Number of new positive herds	Number of herds depopulated	INDICATORS			
							% herds depopulated	% herd coverage	% positive herds	% positive herds
1	2	3	4	5	6	7	8=(7/5)x100	9=(4/3)x100	10=(5/4)x100	11=(6/4)x100
Alytus	18233	18233	18233	30	0	24	80	100	0,16	0
Kaunas	33641	33641	33641	68	0	53	77,94	100	0,20	0
Klaipeda	23881	23881	23881	81	0	33	40,74	100	0,33	0
Marijampole	22024	22024	22024	138	0	87	63,04	100	0,62	0
Panevezys	27013	27013	27013	91	0	6	6,59	100	0,33	0
Taurage	32452	32452	32452	552	34	183	33,15	100	1,70	0,1
Telsiai	20243	20243	20243	102	0	46	45,09	100	0,50	0
Siauliai	18380	18380	18380	75	25	75	100	100	0,40	13
Utena	21157	21157	21157	143	0	60	41,95	100	0,67	0
Vilnius	27584	27584	27584	147	5	147	100	100	0,53	0,02
Total	244608	244608	244608	1427	64	714	50,03	100	0,58	0,026

Year: 2002
 Disease: Enzootic Bovine Leucosis
 Situation on date 2002 12 31
 Animal species: Cattle

Region	Total number of herds	Total number of herds under programme	Number of herds checked	Number of positive herds	Number of positive herds	Number of new positive herds	Number of herds depopulated	Number of herds depopulated	% positive herds depopulated	INDICATORS		
										% herd coverage	% positive herds	% new positive herds
1	2	3	4	5	6	7	8	9	10	11		
							$8=(7/5) \times 100$	$9=(4/3) \times 100$	$10=(5/4) \times 100$	$11=(6/4) \times 100$		
Alytus	18150	18150	18150	6	1	5	83,33	100	0,03	0,005		
Kaunas	31621	31621	31621	15	2	0	0	100	0,04	0,006		
Klaipeda	23881	23881	23881	48	0	15	31,25	100	0,20	0		
Marijampole	21181	21181	21181	51	0	7	13,72	100	0,24	0		
Panevezys	25915	25915	25915	85	42	28	32,94	100	0,32	0,16		
Taurage	26008	26008	26008	369	70	0	0	100	1,41	0,26		
Telsiai	19886	19886	19886	56	42	0	0	100	0,28	0,21		
Siauliai	19378	19378	19378	90	59	53	58,88	100	0,46	0,30		
Utena	20356	20356	20356	83	1	0	0	100	0,40	0,004		
Vilnius	26535	26535	26535	152	25	0	0	100	0,57	0,09		
Total	232911	232911	232911	955	242	160	16,75	100	0,03	0,12		

Year: 2003
 Disease: Enzootic Bovine Leucosis
 Situation on date 2003 12 31
 Animal species: Cattle

Region	Total number of herds	Total number of herds under program	Number of herds checked	Number of positive herds	Number of new positive herds	Number of herds depopulated	INDICATORS			
							% herds depopulated	% herd coverage	% positive herds	% new positive herds
1	2	3	4	5	6	7	$8 = (7/5) \times 100$	$9 = (4/3) \times 100$	$10 = (5/4) \times 100$	$11 = (6/4) \times 100$
Alytus	17576	17576	17576	1	1	1	100	100	0,005	0,005
Kaunas	28795	28795	28795	17	0	0	0	100	0,059	0
Klaipeda	18877	18877	18877	33	19	14	42,42	100	0,17	0,09
Marijampole	20465	20465	20465	44	36	0	0	100	0,21	0,17
Panevezys	22953	22953	22953	57	19	15	26,31	100	0,24	0,08
Taurage	28646	28646	28646	386	15	0	0	100	1,34	0,04
Telsiai	16843	16843	16843	67	23	0	0	100	0,39	0,13
Stautai	15079	15079	15079	37	0	0	0	100	0,24	0
Utena	18564	18564	18564	84	5	0	0	100	0,45	0,02
Vilnius	25100	25100	25100	177	30	0	0	100	0,70	0,11
Total	212898	212898	212898	903	148	30	3,32	100	0,42	0,06

Situation on date 2004 12 31
Animal species: Cattle

Year: 2004
Disease: Enzootic Bovine Leucosis

Region	Total number of herds	Total number of herds under programme	Number of herds checked	Number of positive herds	Number of new positive herds	INDICATORS				
						Number of herds depopulated	% herds depopulated	% coverage	% positive herds	
1	2	3	4	5	6	7	$8 = (7/5) \times 100$	$9 = (4/3) \times 100$	$10 = (5/4) \times 100$	$11 = (6/4) \times 100$
Alytus	14860	14860	14860	1	1	1	100,00	100,00	0,01	0,01
Kaunas	27265	27265	27265	24	2	22	91,67	100,00	0,08	0,01
Klaipeda	17574	17574	17574	12	12	12	100,00	100,00	0,07	0,07
Marijampole	19766	19766	19766	16	16	16	100,00	100,00	0,08	0,08
Panevezys	21459	21459	21459	38	0	9	23,68	100,00	0,18	0,00
Taurage	23302	23302	23302	200	200	138	69,00	100,00	0,86	0,86
Telsiai	15364	15364	15364	26	20	25	96,15	100,00	0,17	0,13
Siauliai	14875	14875	14875	33	32	31	93,94	100,00	0,22	0,22
Utena	16957	16957	16957	53	48	43	81,13	100,00	0,31	0,28
Vilnius	23804	23804	23804	177	82	157	88,70	100,00	0,74	0,34
Total	195226	195226	195226	580	413	454	84,43	100,00	0,29	0,21

Year: 2005
 Disease: Enzootic Bovine Leucosis
 Situation on date 2005 12 31
 Animal species: Cattle

Region	Total number of herds	Total number of herds under programme	Number of herds checked	Number of positive herds	Number of new positive herds	Number of herds depopulated	% positive herds depopulated	INDICATORS			
								% herd coverage	% positive herds	% positive herds	% new positive herds
1	2	3	4	5	6	7	$8 = (7/5) \times 100$	$9 = (4/3) \times 100$	$10 = (5/4) \times 100$	$11 = (6/4) \times 100$	
Alytus	15921	1258	1258	2	1	2	100	100	0,15	0,07	
Kaunas	25790	3316	3316	7	5	7	100	100	0,21	0,15	
Klaipėda	15739	3172	3172	9	3	9	100	100	0,28	0,09	
Marijampolė	18403	3065	3065	12	4	12	100	100	0,39	0,13	
Panevėžys	20252	3492	3492	17	17	17	100	100	0,48	0,48	
Šiauliai	25292	3887	3887	159	41	159	100	100	4,09	1,05	
Tauragė	16842	3542	3542	27	7	27	100	100	0,76	0,19	
Telšiai	13512	4883	4883	52	22	52	100	100	1,06	0,45	
Utena	15344	5122	5122	104	56	104	100	100	2,03	1,09	
Vilnius	23278	2340	2340	38	44	38	100	100	1,62	1,88	
Total	190373	34077	34077	427	200	427	100	100	1,25	0,58	

Year: 2006
 Disease: Enzootic bovine leucosis
 Situation on date 2006 12 31
 Animal species: Cattle

Region	Total number of herds	Total number of herds under programme	Number of herds checked	Number of positive herds	Number of new positive herds	Number of herds depopulated	% positive herds depopulated	INDICATORS			
								% herd coverage	% positive herds	% positive herds	% new positive herds
1	2	3	4	5	6	7	$8 = (7/5) \times 100$	$9 = (4/3) \times 100$	$10 = (5/4) \times 100$	$11 = (6/4) \times 100$	
Alytus	12867	1258	1258	0	0	0	100	100	0	0	
Kaunas	22326	3316	3316	4	4	4	100	100	0,1206	0,1206	
Klaipėda	13748	3172	3172	14	14	14	100	100	0,4414	0,4414	

Marijampolė	15558	3065	3065	11	11	100	100	0,3589	0,3589
Panevėžys	17129	3492	3492	8	8	100	100	0,2291	0,2291
Šiauliai	20678	3887	3887	12	12	100	100	0,3087	0,3087
Tauragė	16210	3542	3542	16	16	100	100	0,4517	0,4517
Tešiai	11947	4883	4883	21	21	100	100	0,4301	0,4301
Utena	13292	5122	5122	2	2	100	100	0,039	0,039
Vilnius	20322	2340	2340	19	19	100	100	0,812	0,812
Total	164077	34077	34077	115	115	100	100	0,3375	0,3375

Year: 2007
 Situation on date 2007 12 31
 Disease: Enzootic bovine leucosis Animal species: Cattle

Region	Total number of herds	Total number of herds under programme	Number of herds checked	Number of positive herds	Number of new positive herds	Number of herds depopulated	% positive herds depopulated	INDICATORS			
								% herd coverage	% positive herds	% new positive herds	% positive herds
I	2	3	4	5	6	7	8=(7/5)x100	9=(4/3)x100	10=(5/4)x100	11=(6/4)x100	
Alytus	12082	929	929	0	0	0	100	100	0,000	0,000	
Kaunas	29077	1816	1816	2	2	2	100	100	0,110	0,110	
Klaipėda	13474	2248	2248	8	8	8	100	100	0,356	0,356	
Marijampolė	13380	2125	2125	7	7	7	100	100	0,329	0,329	
Panevėžys	14425	5259	5259	6	6	6	100	100	0,114	0,114	
Šiauliai	18205	9047	9047	56	56	56	100	100	0,619	0,619	
Tauragė	13774	2595	2595	2	2	2	100	100	0,077	0,077	
Tešiai	11789	1420	1420	12	12	12	100	100	0,845	0,845	
Utena	11459	6055	6055	13	13	13	100	100	0,215	0,215	
Vilnius	16994	2979	2979	38	38	38	100	100	1,276	1,276	
Total	145659	34473	34473	144	144	144	100	100	0,418	0,418	

Year: 2008
 Disease: Enzootic bovine leucosis
 Situation on date 2008 12 31
 Animal species: Cattle

Region	Total number of herds	Total number of herds under programme	Number of herds checked	Number of positive herds	Number of new positive herds	Number of herds depopulated	% positive herds depopulated	INDICATORS			
								% herd coverage	% positive herds	% new positive herds	
1	2	3	4	5	6	7	$8 = (7/5) \times 100$	$9 = (4/3) \times 100$	$10 = (5/4) \times 100$	$11 = (6/4) \times 100$	
Alytus	10955	557	557	0	0	0	100	100	0,000	0,000	
Kaunas	17383	1437	1437	0	0	0	100	100	0,000	0,000	
Klaipėda	10781	2797	2797	3	3	3	100	100	0,107	0,107	
Marijampolė	12339	1381	1381	2	2	2	100	100	0,145	0,145	
Panevėžys	12745	9208	9208	11	11	11	100	100	0,119	0,119	
Šiauliai	16277	5223	5223	33	33	33	100	100	0,632	0,632	
Tauragė	12739	2980	2980	8	8	8	100	100	0,268	0,268	
Telšiai	9289	2986	2986	4	4	4	100	100	0,134	0,134	
Utena	11459	11089	11089	1	1	1	100	100	0,009	0,009	
Vilnius	15124	2288	2288	11	11	11	100	100	0,481	0,481	
Total	129091	39946	39946	73	73	73	100	100	0,183	0,183	

6.1.1.2. Data on animals is available since 2001

Year: 2001
 Disease: Enzootic Bovine Leucosis
 Animal species: Cattle

Region	Total number of animals	Number of animals to be tested under programme	Number of animals tested	Number of animals tested individually	Number of positive animals	Slaughtering		INDICATORS	
						Number of animals with positive result	Total number of animals slaughtered	% coverage at animal level	% positive animals prevalence
1	2	3	4	5	6	7	8	$9 = \frac{4/3}{x100}$	$10 = \frac{6/4}{x100}$
Alytus	48116	26135	26135	26135	30	29		100	0.11
Kaunas	113288	86992	86992	86992	107	88		100	0.12
Klaipėda	91030	53607	53607	53607	129	121		100	0.24
Marijampolė	99303	49498	49498	49498	174	177		100	0.35
Panevėžys	90419	65441	65441	65441	193	166		100	0.29
Tauragė	12847	84738	84738	84738	627	614		100	0.14
Telšiai	81207	40594	40594	40594	89	85		100	0.21
Šiauliai	57882	32722	32722	32722	1110	1176		100	3.39
Utena	63753	48278	48278	48278	163	131		100	0.33
Vilnius	63497	44805	44805	44805	189	214		100	0.42
Total	721342	532810	532810	532810	2811	2801		100	0.43

Year: 2002
 Disease: Fuzootic Bovine Leucosis
 Situation on date 2002 12 31
 Animal species: Cattle

Region	Total number of animals	Number of animals to be tested under program	Number of animals tested	Number of animals tested individually	Number positive animals	Slaughtering		INDICATORS	
						Number of animals with positive result slaughtered or culled	Total number of animals slaughtered	% coverage at animal level	% positive animals Animal prevalence
1	2	3	4	5	6	7	8	9=(4/3)x100	10=(6/4)x100
Alytus	54111	29760	29760	29760	6	5		100	0.02
Kaunas	115965	79731	79731	79731	15	15		100	0.02
Klaipėda	96577	63814	63814	63814	111	82		100	0.17
Marijampolė	94232	59903	59903	59903	99	81		100	0.16
Panevėžys	111245	70086	70086	70086	133	99		100	0.18
Tauragė	116660	85708	85708	85708	377	364		100	0.08
Telkiai	92229	66871	66871	66871	116	115		100	0.17
Šiauliai	63075	44866	44866	44866	993	735		100	2.21
Utena	67491	52518	52518	52518	105	91		100	0.19
Vilnius	70648	53166	53166	53166	186	198		100	0.34
Total	882233	606423	606423	606423	2141	1785		100	0.3

Year: 2003
 Discase: Enzootic Bovine Leucosis
 Situation on date 2003 12 31
 Animal species: Cattle

Region	Total number of animals	Number of animals to be tested under programme	Number of animals tested	Number of animals tested individually	Number positive animals	Slaughtering		INDICATORS	
						Number of animals with positive result slaughtered or culled	Total number of animals slaughtered	% coverage at animal level	% positive animals Animal prevalence
1	2	3	4	5	6	7	8	$9 = \frac{(4/3) \times 100}{100}$	$10 = \frac{(6/4) \times 100}{100}$
Alytus	53933	26774	26774	26774	1	1		0.003	
Kaunas	122683	82950	82950	82950	26	4		0.03	
Klaipėda	90048	48372	48372	48372	46	35		0.09	
Marijampolė	102160	57967	57967	57967	45	46		0.07	
Panevėžys	107427	62538	62538	62538	98	92		0.15	
Tauragė	132914	79371	79371	79371	420	438		0.08	
Telšiai	94692	52390	52390	52390	42	45		0.08	
Šiauliai	68441	42797	42797	42797	705	521		1.6	
Utena	63873	46250	46250	46250	107	87		0.23	
Vilnius	65865	47645	47645	47645	186	253		0.39	
Total	902036	547054	547054	547054	1326	999		100	0.24

Year: 2004
 Disease: Enzootic Bovine Leucosis
 Situation on date 2004 12 31
 Animal species: Cattle

Region	Total number of animals	Number of animals to be tested under programme	Number of animals tested	Number of animals tested individually	Number of positive animals	Slaughtering			INDICATORS	
						Number of animals with positive result slaughtered or culled	Total number of animals slaughtered	% coverage of animal level	% positive animals Animal prevalence	
1	2	3	4	5	6	7	8	$9 = (4/3) \times 100$	$10 = (6/4) \times 100$	
Alytus	55756	26383	26383	26383	1	1	1	100	0,004	
Kaunas	121641	77547	77547	77547	40	35	35	100	0,051	
Klaipėda	93572	43570	43570	43570	15	15	15	100	0,034	
Marijampolė	109159	52053	52053	52053	16	16	18	100	0,031	
Panevėžys	97149	59222	59222	59222	57	57	59	100	0,096	
Tauragė	138762	73868	73868	73868	655	655	753	100	0,887	
Telšiai	93853	51764	51764	51764	29	29	42	100	0,056	
Šiauliai	80583	35622	35622	35622	34	33	33	100	0,095	
Utena	62395	36888	36888	36888	70	59	59	100	0,189	
Vilnius	63845	42191	42191	42191	116	116	141	100	0,275	
Total	916715	499108	499108	499108	1033	1016	1156	100	0,172	

Year: 2005
 Disease: Enzootic Bovine Leucosis
 Situation on date 2005 12 31
 Animal species: Cattle

Region	Total number of animals	Number of animals to be tested under programme	Number of animals tested	Number of animals tested individually	Number positive animals	Slaughtering		INDICATORS	
						Number of animals with positive result slaughtered or culled	Total number of animals slaughtered	% coverage at animal level	% positive animals Animal prevalence
1	2	3	4	5	6	7	8	$9 = \frac{4}{3} \times 100$	$10 = \frac{6}{4} \times 100$
Alytus	55105	19346	19346	107	1	1	1	100	0,005
Kaunas	124345	54996	54996	2238	13	13	13	100	0,02
Klaipėda	87545	53377	53377	2556	21	21	21	100	0,03
Marijampolė	103201	53437	53437	771	26	26	26	100	0,04
Panevėžys	101968	76078	76078	10606	26	26	26	100	0,03
Šiantiai	127960	104225	104225	32975	495	495	495	100	0,47
Tauragė	105792	8820	8820	1672	26	26	26	100	0,29
Telšiai	74994	44339	44339	5527	55	55	55	100	0,12
Utena	58840	40200	40200	16367	90	90	90	100	0,22
Vilnius	62612	10745	10745	3584	39	39	39	100	0,36
Total	902362	465563	465563	76403	792	792	792	100	0,17

Year: 2006
 Disease: Enzootic Bovine Leucosis
 Situation on date 2006 12 31
 Animal species: Cattle

Region	Total number of animals	Number of animals to be tested under programme	Number of animals tested	Number of animals tested individually	Number positive animals	Slaughtering		INDICATORS	
						Number of animals with positive result slaughtered or culled	Total number of animals slaughtered	% coverage at animal level	% positive animals Animal prevalence
1	2	3	4	5	6	7	8	9=(4/3)x100	10=(6/4)x100
Alytus	46294	28276	11235	69	0	0	0	39,73	0
Kaunas	116416	66219	68745	1735	4	0	0	103,81	0,01
Klaipėda	87223	41237	67554	1525	14	5	5	163,82	0,02
Marijampolė	98403	49271	74833	1056	39	33	33	151,88	0,05
Panevėžys	99001	56097	82182	12771	8	4	11	146,50	0,01
Šiauliai	121122	68746	96461	16404	155	155	174	140,32	0,16
Tauragė	103889	49919	35861	1235	16	16	16	71,84	0,04
Telšiai	72693	34428	60227	4760	21	21	51	174,94	0,03
Utena	55750	33812	23141	1104	3	1	1	68,44	0,01
Vilnius	59129	41846	11002	713	21	21	39	26,29	0,19
Total	859920	469851	531241	41372	281	256	330	113,07	0,05

Year: 2007
 Situation on date 2007 12 31
 Disease: Enzootic bovine leucosis Animal species: Cattle

Region	Total number of animals	Number of animals to be tested under programme	Number of animals tested	Number of animals tested individually	Number positive animals	Slaughtering		INDICATORS	
						Number of animals with positive result slaughtered or culled	Total number of animals slaughtered	% coverage at animal level	% positive animals Animal prevalence
I	2	3	4	5	6	7	8	$9=(4/3) \times 100$	$10=(6/4) \times 100$
Alytus	43497	11235	15930	104	0	0	0	141,79	0,00
Kaunas	108336	68745	67620	512	3	3	3	98,36	0,00
Klaipėda	85776	67554	65374	2253	15	15	15	96,77	0,02
Marijampolė	88803	74833	64929	1545	8	8	8	86,77	0,01
Panevėžys	90914	82182	68855	2766	15	15	15	83,78	0,02
Šiauliai	112390	96461	84186	8963	65	65	65	87,27	0,08
Tauragė	99751	35861	65570	690	4	4	4	182,84	0,01
Telšiai	72976	60227	41771	4306	25	25	25	69,36	0,06
Utena	50056	23141	51606	666	16	16	16	223,01	0,03
Vilnius	48027	11002	18479	1163	50	50	50	167,96	0,27
Total	800526	531241	544320	22968	201	201	201	102,46	0,04

Year: 2008
 Disease: Enzootic bovine leucosis Animal species: Cattle
 Situation on date 2008 12 31

Region	Total number of animals	Number of animals to be tested under programme	Number of animals tested	Number of animals tested individually	Number positive animals	Slaughtering		INDICATORS	
						Number of animals with positive result slaughtered or culled	Total number of animals slaughtered	% coverage of animal level	% positive animals Animal prevalence
1	2	3	4	5	6	7	8	$9 = \frac{4}{3} \times 100$	$10 = \frac{6}{4} \times 100$
Alytus	40548	14744	14744	107	0	0	0	100	0
Kaunas	101414	66972	66972	3010	0	0	0	100	0
Klaipėda	75226	51195	51195	1200	7	7	7	100	0,014
Marijampolė	85097	60184	60184	549	2	2	2	100	0,003
Panevėžys	88124	85023	85023	671	13	13	13	100	0,015
Šiauliai	108222	66878	66878	7054	33	33	33	100	0,049
Tauragė	93440	58679	58679	1145	12	12	12	100	0,020
Telšiai	66386	40526	40526	3152	12	12	12	100	0,030
Utena	50056	51430	51430	768	2	2	2	100	0,004
Vilnius	44058	16696	16696	1125	12	12	12	100	0,072
Total	752571	512327	512327	18781	93	93	93	100	0,018

6.2. Stratified data on surveillance and laboratory tests

Year: 2001 Disease: Enzootic bovine leucosis Animal species/category: cattle

Description of the used serological tests: Agar gel immunodiffusion

Region	Serological tests		Microbiological or virological tests		Other tests	
	Number of animals tested	Number of positive samples	Number of samples tested	Number of positive samples	Number of samples tested	Number of positive samples
Alytus	26135	30				
Kaunas	86992	107				
Klaipeda	53607	129				
Marijampole	49498	174				
Panevezys	65441	193				
Taurage	32722	127				
Telsiai	40594	89				
Siauliai	84738	1110				
Utena	48278	163				
Vilnius	44805	189				
Total	532810	2311				

Year: 2002 Disease: Enzootic bovine leucosis

Animal species/category: cattle

Description of the used serological tests: Agar gel immunodiffusion

Region	Serological tests		Microbiological or virological tests		Other tests	
	Number of animals tested	Number of positive samples	Number of samples tested	Number of positive samples	Number of samples tested	Number of positive samples
Alytus	29760	6				
Kaunas	79731	0				
Klaipeda	63814	111				
Marijampole	59903	99				
Panevezys	70086	133				
Taurage	44866	77				
Telsiai	66871	116				
Siauliai	85708	993				
Utena	52518	105				
Vilnius	53166	186				
Total	606423	1826				

Year: 2003 Disease: Enzootic bovine leucosis Animal species/category: cattle

Description of the used serological tests: Agar gel immunodiffusion

Region	Serological tests		Microbiological or virological tests		Other tests	
	Number of animals tested	Number of positive samples	Number of samples tested	Number of positive samples	Number of samples tested	Number of positive samples
Alytus	26774	1				
Kaunas	82950	26				
Klaipeda	48372	46				
Marijampole	57967	45				
Pancevzys	62538	98				
Taurage	42797	70				
Telsiai	52390	42				
Siauliai	79371	705				
Urena	46250	107				
Vilnius	47645	186				
Total	547054	1326				

Year: 2004 Disease: Enzootic bovine leucosis Animal species/category: cattle

Description of the used serological tests: Agar gel immunodiffusion

Region	Serological tests		Microbiological or virological tests		Other tests	
	Number of animals tested	Number of positive samples	Number of samples tested	Number of positive samples	Number of samples tested	Number of positive samples
Alytus	26383	1				
Kaunas	77547	40				
Klaipeda	43570	15				
Marijampole	52053	16				
Panevezys	59222	57				
Taurage	73868	655				
Telsiai	51764	29				
Siaubiai	35622	34				
Utena	36888	70				
Vilnius	42191	116				
Total	499108	1033				

Year: 2005 Disease: **Enzootic bovine leucosis**Animal species/category: **cattle**Description of the used serological tests: **Agar gel immunodiffusion and ELISA**

Region	Serological tests		Microbiological or virological tests		Other tests	
	Number of animals tested	Number of positive samples	Number of samples tested	Number of positive samples	Number of samples tested	Number of positive samples
Alytus	19346	1				
Kaunas	54996	13				
Klaipėda	53377	21				
Marijampolė	53437	26				
Panevėžys	76078	26				
Šiauliai	104225	495				
Tauragė	8820	26				
Telšiai	44339	55				
Utena	40200	90				
Vilnius	10745	39				
TOTAL	465563	792				

Year: 2006 Disease: Enzootic bovine leucosis

Animal species/category: cattle

Description of the used serological tests: Agar gel immunodiffusion and ELISA

Region	Serological tests		Microbiological or virological tests		Other tests	
	Number of animals tested	Number of positive samples	Number of samples tested	Number of positive samples	Number of samples tested	Number of positive samples
Alytus	11235	0				
Kaunas	68745	4				
Klaipėda	67554	14				
Marijampolė	74833	39				
Panevėžys	82182	8				
Siauliai	96461	155				
Tauragė	35861	16				
Telšiai	60227	21				
Utena	23141	3				
Vilnius	11002	21				
TOTAL	531241	281				

Year: 2007 Disease: Enzootic bovine leucosis

Animal species/category: cattle

Description of the used serological tests: Agar gel immunodiffusion and ELISA

Region	Serological tests		Microbiological or virological tests		Other tests	
	Number of animals tested	Number of positive samples	Number of samples tested	Number of positive samples	Number of samples tested	Number of positive samples
Alytus	15930	0				
Kaunas	67620	3				
Klaipėda	65374	15				
Marijampolė	64929	8				
Panevėžys	68855	15				

Siauliai	84186	65		
Tauragė	65570	4		
Telšiai	41771	25		
Utena	51606	16		
Vilnius	18479	50		
TOTAL	544320	201		

Year: 2008 Disease: Enzootic bovine leucosis Animal species/category: cattle

Description of the used serological tests: Agar gel immunodiffusion and ELISA

Region	Serological tests		Microbiological or virological tests		Other tests	
	Number of animals tested	Number of positive samples	Number of samples tested	Number of positive samples	Number of samples tested	Number of positive samples
Alytus	14744	0				
Kaunas	66972	0				
Klaipėda	51195	7				
Marijampolė	60184	2				
Panevėžys	85023	13				
Siauliai	66878	33				
Tauragė	58679	12				
Telšiai	40526	12				
Utena	51430	2				
Vilnius	16696	12				
TOTAL	512327	93				

6.3. Data on infection

Year: 1998 Disease: Enzootic bovine leucosis

Animal species: cattle

Region	Number of herds infected	Number of animals infected
Alytus		82
Kaunas		426
Klaipeda		152
Marijampole		1648
Panevezys		978
Taurage		1507
Telsiai		509
Siauliai		262
Utena		1507
Vilnius		569
Total		7640

Year: 1999 Disease: Enzootic bovine leucosis Animal species: cattle

Region	Number of herds infected	Number of animals infected	
Alytus		66	X
Kaunas		160	X
Klaipeda		120	X
Marjampole		298	X
Panevezys		548	X
Taurage		966	X
Telsiai		290	X
Siauliai		212	X
Utena		747	X
Vilnius		428	X
Total		3835	X

Year: 2000 Disease: Enzootic bovine leucosis Animal species: cattle

Region	Number of herds infected	Number of animals infected
Alytus		50
Kaunas		120
Klaipeda		81
Marijampole		180
Panevezys		309
Taurage		672
Telsiai		185
Siauliai		186
Utena		476
Vilnius		291
Total		2550

Year: 2001 Disease: Enzootic bovine leucosis Animal species: cattle

Region	Number of herds infected	Number of animals infected
Alytus	30	30
Kaunas	68	107
Klaipeda	81	129
Marijampole	138	174
Panevezys	91	193
Taurage	552	627
Telsiai	102	89
Stalikai	75	1110
Utena	143	163
Vilnius	147	189
Total	1427	2811

Year: 2002 Disease: Enzootic bovine leucosis Animal species: cattle

Region	Number of herds infected	Number of animals infected
Alytus	6	6
Kaunas	15	15
Klaipeda	48	111
Marijampole	51	99
Panevezys	85	133
Taurage	369	377
Telsiai	56	116
Siauliai	90	993
Utena	83	105
Vilnius	152	186
Total	955	2141

Year: 2003 Disease: Enzootic bovine leucosis Animal species: cattle

Region	Number of herds infected	Number of animals infected
Alytus	1	1
Kaunas	17	26
Klaipeda	33	46
Marijampole	44	45
Panevezys	57	98
Taurage	386	420
Telsiai	67	42
Siauliai	37	705
Utena	84	107
Vilnius	177	186
Total	903	1676

Year: 2004 Disease: Enzootic bovine leucosis Animal species: cattle

Region	Number of herds infected	Number of animals infected
Alytus	1	1
Kaunas	24	40
Klaipeda	12	15
Marijampole	16	16
Panevezys	38	57
Taurage	200	655
Telsiai	26	29
Siauliai	33	34
Utena	53	70
Vilnius	177	116
Total	580	1033

Year: 2005 Disease: Enzootic bovine leucosis Animal species: cattle

Region	Number of herds infected	Number of animals infected
Alytus	2	1
Kaunas	7	13
Klaipėda	9	21
Marijampolė	12	26
Panevėžys	17	26
Siauliai	159	495
Tauragė	27	26
Telšiai	52	55
Utena	104	90
Vilnius	38	39
Total	427	792

Year: 2006 Disease: Enzootic bovine leucosis Animal species: cattle

Region	Number of herds infected	Number of animals infected
Alytus	0	0
Kaunas	4	4
Klaipėda	14	14
Marijampolė	11	39
Panevėžys	8	8
Šiauliai	12	155
Tauragė	16	16
Telšiai	21	21
Utena	2	3
Vilnius	19	21
Total	115	281

Year: 2007 Disease: Enzootic bovine leucosis Animal species: cattle

Region	Number of herds infected	Number of animals infected
Alytus	0	0
Kaunas	2	3
Klaipėda	8	15
Marijampolė	7	8
Panevėžys	6	15
Šiauliai	56	65
Tauragė	2	4
Telšiai	12	25
Utena	13	16
Vilnius	38	50
Total	144	201

Animal species: cattle

Disease: Enzootic bovine leucosis

Year: 2008

Region	Number of herds infected	Number of animals infected
Alytus	0	0
Kaunas	0	0
Klaipėda	3	7
Marijampolė	2	2
Panevėžys	11	13
Siauliai	33	33
Tauragė	8	12
Tešiai	4	12
Utena	1	2
Vilnius	11	12
Total	73	93

6.4 Data on status of herds at the end of:

Year: 2006
 Disease: Enzootic Bovine Leucosis
 Animal species: Cattle

Situation on date 2006 12 31
 Animal species: Cattle

Region	Status of herds and animals under programme											
	Total number of herds under programme		Unknown		Not free or not officially free				Free		Officially free	
	Herds	Animals	Herds	Animals	Last check positive	Last check negative	free or officially free suspended	Herds	Animals	Herds	Animals	
Alytus	1258	11235			0	0	1258	11235	0	0	1258	11235
Kaunas	3316	68745			4	4	3312	68741	4	4	3312	68741
Klaipėda	3172	67554			14	14	3158	67540	14	14	3158	67540
Marijampolė	3065	74833			11	39	3054	74794	11	39	3054	74794
Panevėžys	3492	82182			8	8	3484	82174	8	8	3484	82174
Šiauliai	3887	96461			12	155	3875	96306	12	155	3875	96306
Tauragė	3542	35861			16	16	3526	35845	16	16	3526	35845
Telsiai	4883	60227			21	21	4862	60206	21	21	4862	60206
Utena	5122	23141			2	3	5120	23138	2	3	5120	23138
Vilnius	2340	11002			19	21	2321	10981	19	21	2321	10981
Total	34077	531241			115	281	33962	530960	115	281	33962	530960

Year: 2007
 Disease: Enzootic Bovine Leucosis
 Situation on date 2007 12 31
 Animal species: Cattle

Region	Status of herds and animals under programme											
	Total number of herds under programme		Unknown		Not free or not officially free				Free		Officially free	
	Herds	Animals	Herds	Animals	Last check positive	Last check negative	Animals	Herds	Animals	Herds	Animals	
Alytus	929	15930			0	0	15930	0	0	0	11235	
Kaunas	1816	67620			2	3	67617	2	3	1814	68741	
Klaipėda	2248	65374			8	15	65359	8	15	2240	67540	
Marijampolė	2125	64929			7	8	64921	7	8	2118	74794	
Panevėžys	5259	68855			6	15	68840	6	15	5253	82174	
Šiauliai	9047	84186			56	65	84121	56	65	8991	96306	
Tauragė	2595	65570			2	4	65566	2	4	2593	35845	
Telšiai	1420	41771			12	25	41746	12	25	1408	60206	
Utena	6055	51606			13	16	51590	13	16	6042	23138	
Vilnius	2979	18479			38	50	18429	38	50	2941	10981	
Total	34473	544320			144	201	544119	144	201	34329	530960	

Year: 2008
 Disease: Enzootic Bovine Leucosis
 Situation on date 2008 12 31
 Animal species: Cattle

Region	Status of herds and animals under programme											
	Total number of herds under programme		Unknown		Not free or not officially free				free or officially free		Officially free	
	Herds	Animals	Herds	Animals	Last check positive	Last check negative	Herds	Animals	Herds	Animals	Herds	Animals
Alytus	557	14744			0	0	557	14744	0	0	557	14744
Kaunas	1437	66972			0	0	1437	66972	0	0	1437	66972
Klaipėda	2797	51195			3	7	2794	51188	3	7	2794	51188
Marijampolė	1381	60184			2	2	1379	60182	2	2	1379	60182
Panevėžys	9208	85023			11	13	9197	85010	11	13	9197	85010
Šiauliai	5223	66878			33	33	5190	66845	33	33	5190	66845
Tauragė	2980	58679			8	12	2972	58667	8	12	2972	58667
Telšiai	2986	40526			4	12	2982	40514	4	12	2982	40514
Utena	11089	51430			1	2	11088	51428	1	2	11088	51428
Vilnius	2288	16696			11	12	2277	16684	11	12	2277	16684
Total	39946	512327			73	93	39873	512334	73	93	39873	512334

7 TARGETS

7.1 Targets related to testing

7.1.1. Targets on diagnostic tests

7.1.1.1. Number and specification of tests

Disease: Enzootic bovine leucosis Animal species: Cattle

Region	Type of the test	Target population	Type of sample	Objective	Number of planned tests
Alytus	AGID	EBL virus infected herds and herds which has not achieved officially EBL free status	Blood	Officially EBL free status herds	107
Kaunas					3010
Klaipėda					1200
Marijampolė					549
Panevėžys					671
Šiauliai					7054
Tauragė					1145
Telšiai					3152
Utena					768
Vilnius					1125
				Total	18781

7.1.1.1. Number and specification of tests

Disease: **Enzootic bovine leucosis** Animal species: **Cattle**

Region	Type of the test	Target population	Type of sample	Objective	Number of planned tests
Alytus	ELISA	Herds with milking cows	milk	Officially EBL free status herds	14637
Kaunas					63962
Klaipėda					49995
Marjampolė					59635
Panevėžys					84352
Šiauliai					59824
Tauragė					57534
Telšiai					37374
Utena					50662
Vilnius					15571
Total					493546

7.1.1.2. Testing scheme:

Cattle herds with milking cows will be tested from the milk by ELISA test. Other herds will be tested from the blood samples

7.1.2 Targets on testing herds and animals

7.1.2.1. Targets on the testing of herds

Disease: Enzootic bovine leucosis Animal species: Cattle

Region	Total number of herds	Total number of herds under the programme	Number of the herds to be checked	Number of expected positive herds	Number of expected new positive herds	Number of herds expected to be depopulated	% positive herds expected to be depopulated	Target indicators			% new positive herds Expected herd incidence $11=(6/4) \times 100$
								Expected herd coverage	% positive herds Expected period herd prevalence	% positive herds Expected herd incidence	
I	2	3	4	5	6	7	$8=(7/5) \times 100$	$9=(4/3) \times 100$	$10=(5/4) \times 100$	$11=(6/4) \times 100$	
Alytus	10955	557	557	0	0	0	100	100	0,000	0,000	
Kaunas	17383	1437	1437	1	1	1	100	100	0,070	0,070	
Klaipėda	10781	2797	2797	3	3	3	100	100	0,107	0,107	
Marijampolė	12339	1381	1381	2	2	2	100	100	0,145	0,145	
Panevėžys	12745	9208	9208	11	11	11	100	100	0,119	0,119	
Šiauliai	16277	5223	5223	33	33	33	100	100	0,632	0,632	
Tauragė	12739	2980	2980	8	8	8	100	100	0,268	0,268	
Telšiai	9289	2986	2986	4	4	4	100	100	0,134	0,134	
Utena	11459	11089	11089	1	1	1	100	100	0,009	0,009	
Vilnius	15124	2288	2288	11	11	11	100	100	0,481	0,481	
Total	129091	39946	39946	74	74	74	100	100	0,185	0,185	

7.1.2.2. Targets on the testing of animals

Disease: Enzootic bovine leucosis Animal species: Cattle

Region	Total number of animals	Number of animals under the programme	Number of animals expected to be tested	Number of animals to be tested individually	Number of expected positive animals	Slaughtering		Target indicators	
						Number of animals with positive result expected to be slaughtered or culled	Total number of animals expected to be slaughtered	Expected herd coverage at animal level	% positive animals Expected animal prevalence
1	2	3	4	5	6	7	8	$9 = \frac{(4/3) \times 100}{100}$	$10 = \frac{(6/4) \times 100}{100}$
Alytus	40548	14744	14637	107	0	0	0	100	100
Kaunas	101414	66972	63962	3010	2	2	2	100	100
Klaipėda	75226	51195	49995	1200	7	7	7	100	100
Marjampolė	85097	60184	59635	549	2	2	2	100	100
Panėvėžys	88124	85023	84352	671	13	13	13	100	100
Šiauliai	108222	66878	59824	7054	33	33	33	100	100
Tauragė	93440	58679	57534	1145	12	12	12	100	100
Telšiai	66386	40526	37374	3152	12	12	12	100	100
Utena	50056	51430	50662	768	2	2	2	100	100
Vilnius	44058	16696	15571	1125	12	12	12	100	100
Total	752571	512327	493546	18781	95	95	95	100	100

Cattle from milking farms will be tested by milk test. Milk test will be done from pulled milk sample. One pulled milk sample consist all milking cows in the farm but not more than 50 in one sample. Individual testing will be done in not milking farms and in case of positive pulled milk sample, the individual testing of all caws on the pulled sample will be done.

7.2. Targets on qualification of herds and animals

Region	Disease: Enzootic bovine leucosis										Animal species: Cattle									
	Targets on status of herds and animals under the programme										Targets on status of herds and animals under the programme									
	Total number of herds and animals under the programme					Expected unknown					Expected not free or not officially free					Expected free or officially free				
	Herds		Animals			Herds		Animals			Herds		Animals			Herds		Animals		
I	2	3	4	5	6	7	8	9	10	11	12	13	14	15						
Alytus	557	14744			0	0	557	14744					10955	40548						
Kaunas	1437	66972			0	0	1437	66972					17383	101414						
Klaipėda	2797	51195			3	7	2794	51188					10781	75226						
Marijampolė	1381	60184			2	2	1379	60182					12339	85097						
Panevėžys	9208	85023			11	13	9197	85010					12745	88124						
Šiauliai	5223	66878			33	33	5190	66845					16277	108222						
Tauragė	2980	58679			8	12	2972	58667					12739	93440						
Telšiai	2986	40526			4	12	2982	40514					9289	66386						
Utena	11089	51430			1	2	11088	51428					11459	50056						
Vilnius	2288	16696			11	12	2277	16684					15124	44058						
Total	39946	512327			73	93	39873	512234					129091	752571						

8. DETAILED ANALYSIS OF THE COST OF THE PROGRAMME

Costs related to	Specification	Number of units	Unitary cost in €	Total amount in €	Community funding requested (yes/no)
1. Testing					
1.1. Cost of the analysis	Test: AGID blood	19000	0,5	9500	yes
1.2. Cost of sampling	Test: ELISA milk	500000	0,5	250000	yes
1.3. Other costs					
2. Vaccination or treatment					
2.1. Purchase of vaccine/treatment					
2.2. Distribution costs					
2.3. Administering costs					
2.4. Control costs					
3. Slaughter and destruction					
3.1. Compensation of animals		120	300	36000	yes
3.2. Transport costs					
3.3. Destruction costs					

3.4. Loss in case of slaughtering					
3.5. Costs from treatment of products (milk, eggs, hatching eggs, etc.)					
4. Cleaning and disinfection					
5. Salaries (staff contracted for the programme only)					
6. Consumables and specific equipment					
7. Other costs (transportation of samples to NVL)					
TOTAL				295500	yes