



*National Sanitary Veterinary and Food Safety
Authority of Romania*

*Information on Newcastle disease in a
backyard farm in Romania*

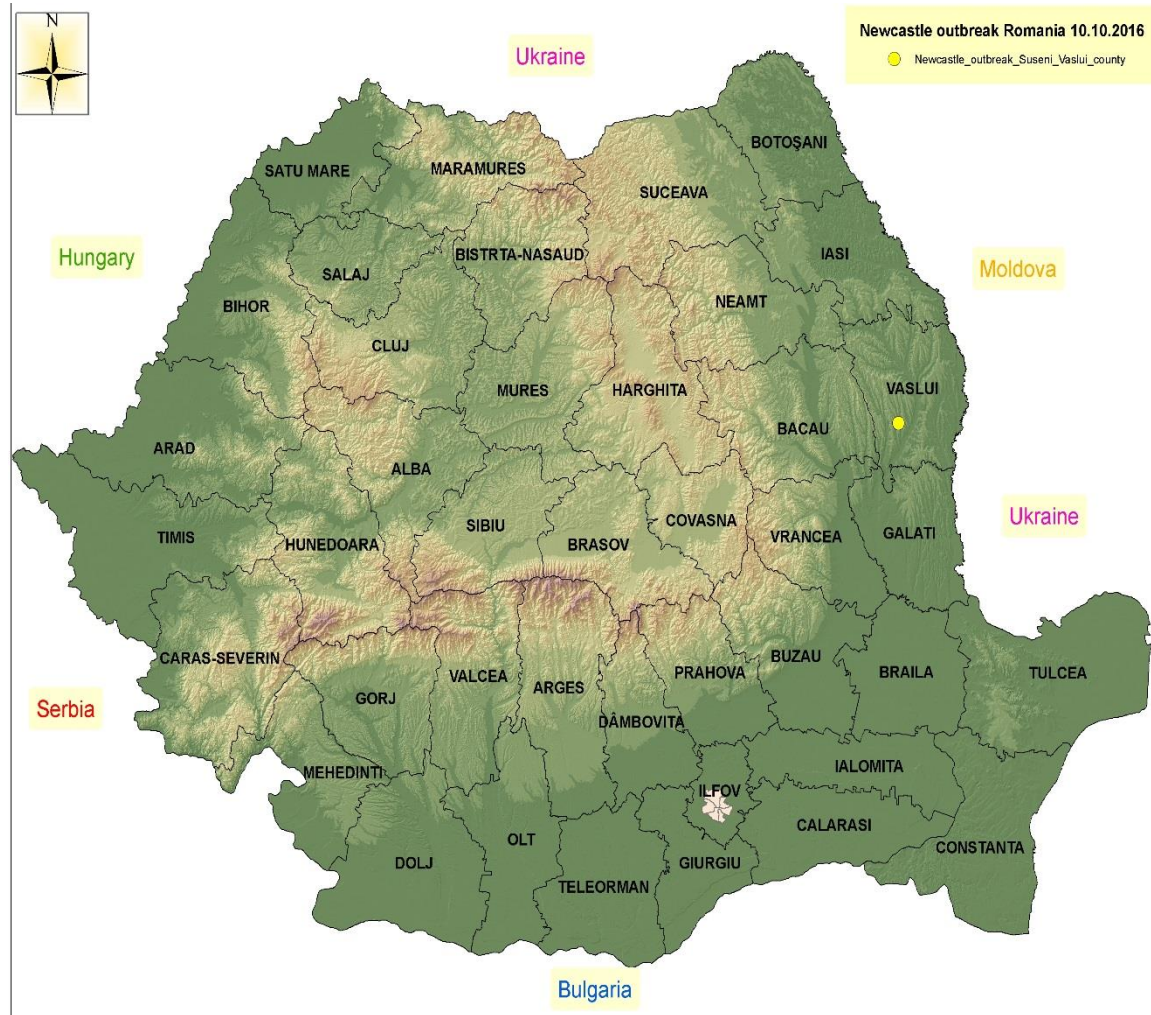
*PAFF Committee, 7 November 2016
Brussels*



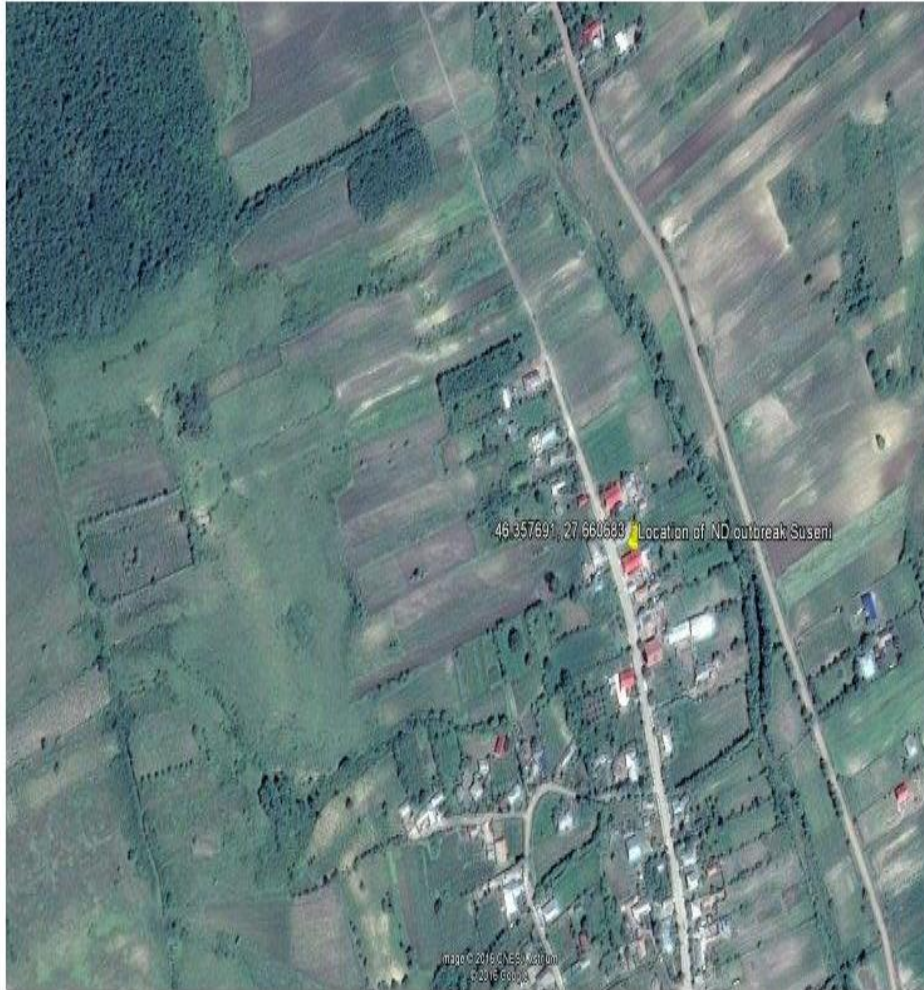
*Newcastle disease outbreak in backyard farm, 12.10.2016, Suseni locality
Vaslui County*

- Location of the outbreak:
Vaslui County, Suseni locality, Est of Romania*

*Longitude: 27.660683
Latitude: 46.357691*



Newcastle disease outbreak in backyard farm, 12.10.2016, Suseni locality Vaslui County



Outbreak holding: Backyard with 106 poultry, from which 26 were adult laying hens and 80 chickens. From the owner statement, the first mortality was noticed in 15.09.2016 with clinical signs of diarrhea and apathy.

Suspicion: On 30.09.2016, the last 3 dead poultry were sent to the County Sanitary Veterinary Laboratory (CSVL), with suspicion of Newcastle disease. The movement restrictions have been set up. All materials that were in contact with the chickens remain inside the backyard.

Confirmation: at NRL on 12.10.2016; infection with a velogene 5d, APMV-1 strain. The sequence of amino acids is in progress.

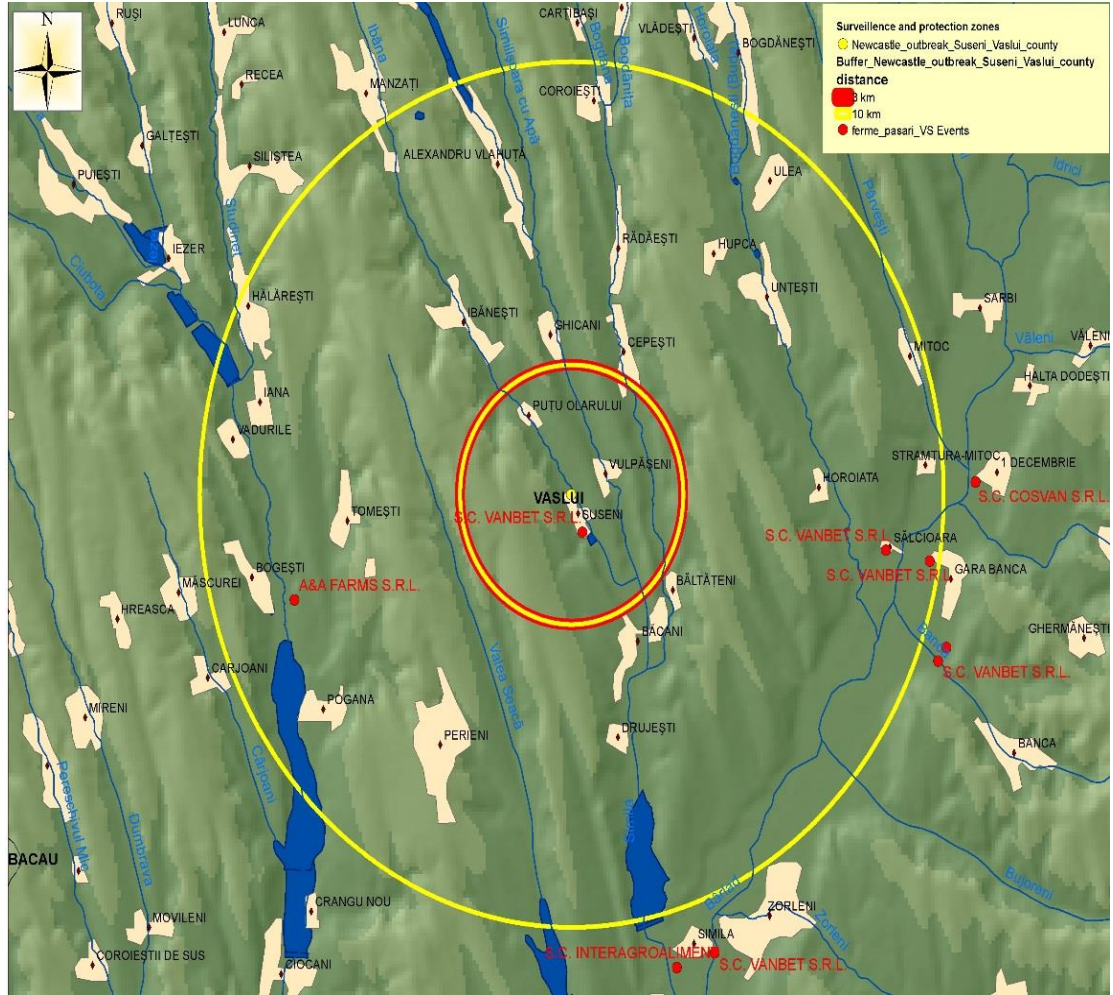
The Report of the OIE, FAO and EU Reference Laboratory shows a similarity of 100% with RO 14-039189CK and RO 15-003876CK and 99,5% similarity to RO16-013310CK (similarity with last outbreaks in Prahova, Suceava and Constanta county)



- *the flock was not vaccinated against Newcastle disease. The only owner of the affected backyard was an old lady who didn't declare in time, all the poultry to the practicing vet. The birds are from her own broody.*
 - *In 03.10.2016, the County Sanitary Veterinary Laboratory (CSVL) sending to the National Reference Laboratory of:*
 - 3 sets of organs from 3 corps, from which 4 organs pools (pulmon + trahee proventricul organs + intestines);*
- Accordingly to the Analysis Report no. 14190/10.10.2016, the samples reacted positive at the virus isolation test (10.10.2016), identification of the viral genome (10.10.2016), and the identification and characterization of the Newcastle disease virus - gene sequencing (25.10.2016).*



- *3 km protection zone: 1 commercial broilers farm (66568 heads), 3 localities with backyard poultry*
- *10 km surveillance zone including the 3 km protection zone; 4 commercial farms:*
 - *2 laying hens (73658 and 40369 heads),*
 - *one empty broiler farm*
 - *one broiler breeding farm with ongoing depopulation under the normal technological cycle,*
 - *23 localities with backyard farms with*



Clinical inspection in backyard poultry, in the protection zone

<i>Nr. crt</i>	<i>Locality and schedule of visit</i>	<i>No of holding inspected</i>	<i>No. of holding with receptive poultry</i>	<i>No. of receptive poultry</i>	<i>Clinical healthy</i>
<i>1</i>	<i>Suseni 13-21.10.2016</i>	<i>89</i>	<i>89</i>	<i>1426</i>	<i>1426</i>
<i>2</i>	<i>Vulpășeni 13-21.10.2016</i>	<i>47</i>	<i>47</i>	<i>1215</i>	<i>1215</i>
<i>3</i>	<i>Puțu Olarului 13-21.10.2016</i>	<i>25</i>	<i>25</i>	<i>1220</i>	<i>1220</i>
	<i>Total</i>	<i>161</i>	<i>161</i>	<i>3861</i>	<i>3861</i>



Clinical inspections in the surveillance zone

<i>Nr. Crt.</i>	<i>Locality and schedule of visit</i>	<i>No of backyard inspected</i>	<i>No. of backyard with receptive poultry</i>	<i>No. of receptive poultry</i>	<i>Clinical healthy</i>
	<i>23 localities</i>	<i>2367</i>	<i>2367</i>	<i>41328</i>	<i>41328</i>



- *All the poultry were dead before to apply official measures after confirmation.*
- *All cadavers have been **destroyed** on 29.09.2019, the last three cadavers being sent to CLSV;*
- *The **first disinfection** was completed on 12.10.2016. Cleaning was completed on 18.10.2016, the **second disinfection** was on 26.10.2016, **third disinfection** on 03.11.2016.*
- *Local CA ordered no trade in live poultry, eggs, poultry products, manure or bedding out of the restriction zone;*
- *The cleaning is finished, the manure was collected and destroyed;*
- *Clinical examinations and inspections in the restriction zones was finalized.*



- *Epidemiology, tracing back:*
- *According to results of the EURL, it seems that the source of virus it is maintained in wild birds. The disease appeared on a flock unprotected against Newcastle disease.*
- *Tracings of people, vehicles was not relevant*
- *The investigation is ongoing.*
- *No other poultry reported as sick or found dead in the area*
- *After the confirmation of the outbreak, each commercial farms from Vaslui county daily informed the CA about the mortality %*
All values are normal. Serological tests were performed to all commercial farms in the restriction zones with properly results.
- *Spread/Trace Forward: No movement of live poultry or day old chicks from Vaslui County to other Member States during the high risk period.*
- *The final report will be provided during this month.*



Thank you for your attention!

