



Food and  
Veterinary Service  
Republic of Latvia

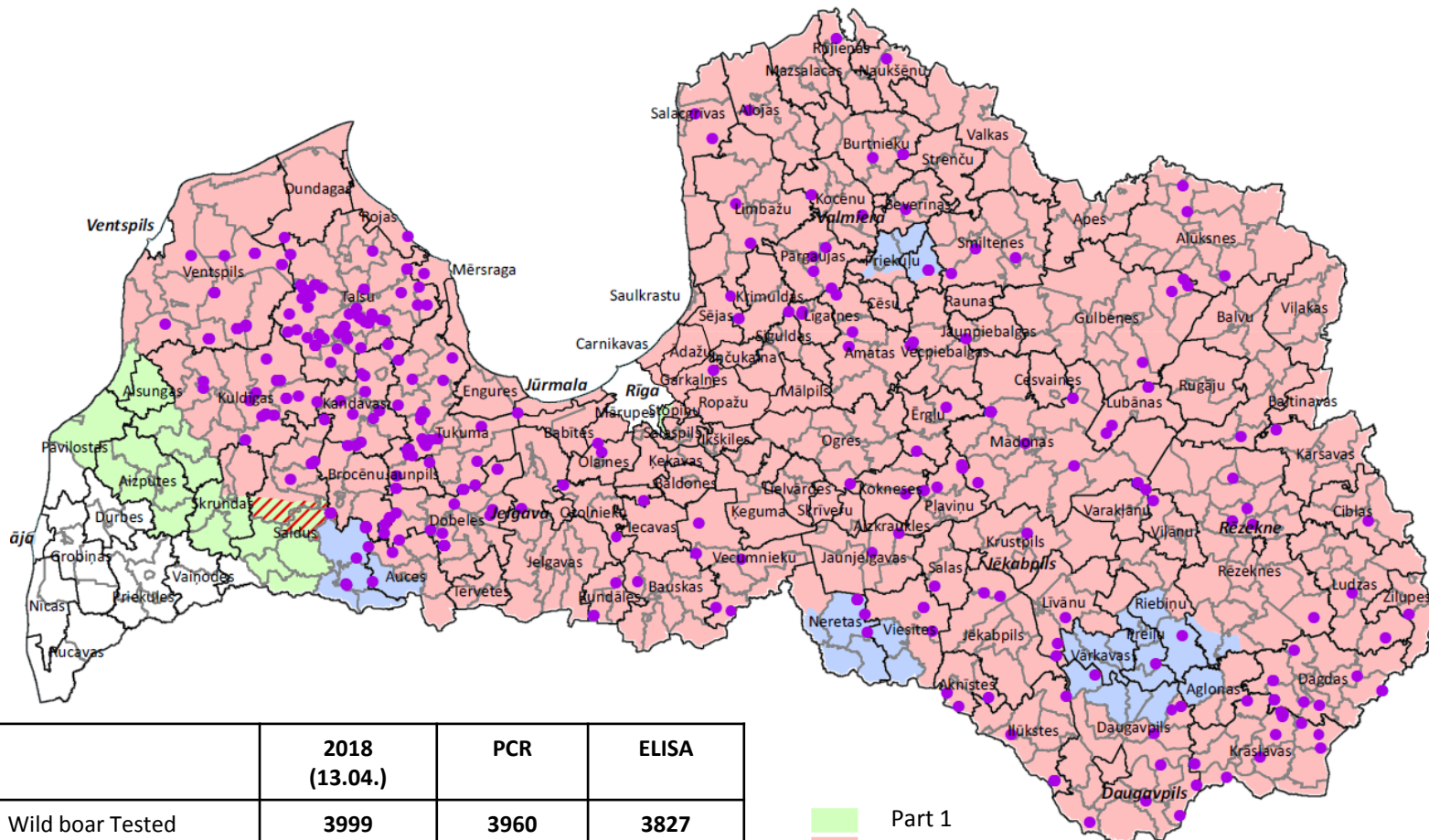
# **ASF epidemiological situation in Latvia – 2018 (update)**

PAFF meeting,  
Brussels, 18.04.-19.04.2018.



Food and  
Veterinary Service  
Republic of Latvia

# ASF cases in 2018



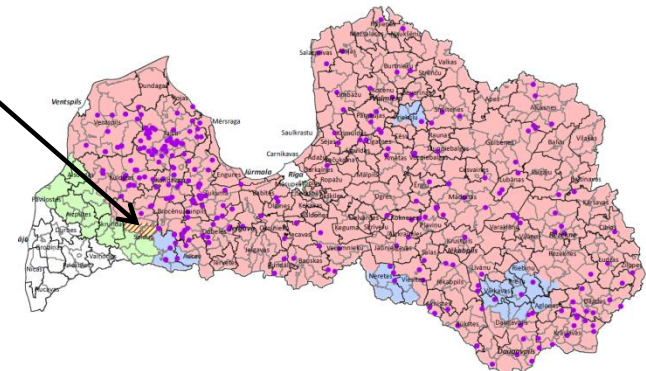
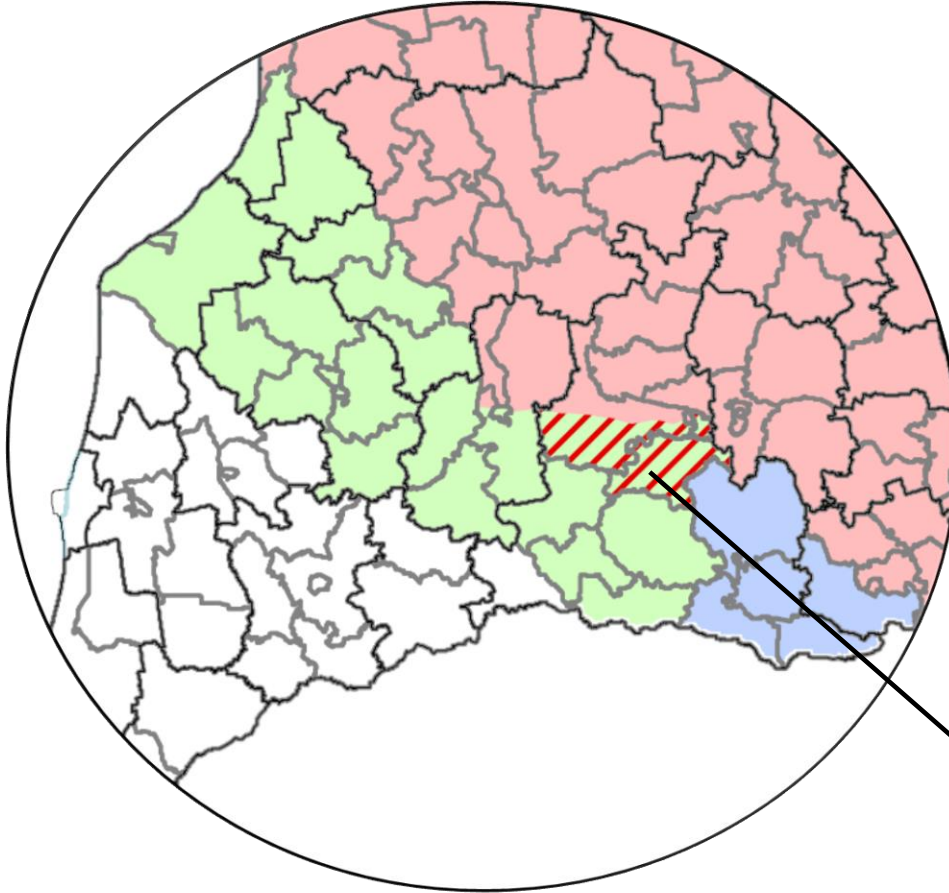
	<b>2018 (13.04.)</b>	<b>PCR</b>	<b>ELISA</b>
Wild boar Tested	<b>3999</b>	<b>3960</b>	<b>3827</b>
Hunted	3833		
Found dead	166		
Wild boar cases	<b>384</b>	<b>228</b>	<b>156</b>
Hunted	245		
Found dead	139		

- Part 1
- Part 2
- Part 3
- WB cases 2018



Food and  
Veterinary Service  
Republic of Latvia

# Enlargement of PART 2 in Saldus county





Food and  
Veterinary Service  
Republic of Latvia

Thank you for your attention!