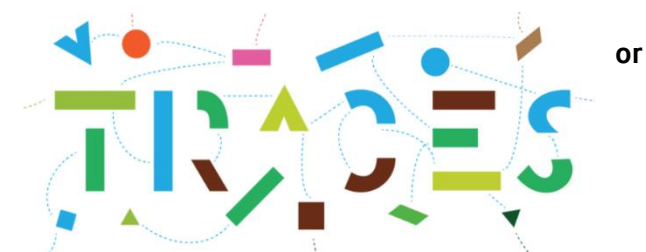


**Interceptions of commodities imported into the EU  
Switzerland with harmful organism(s)**

Notified during the month of: **MAY** 2020

Number of interceptions with harmful organisms: 12



**Data extracted on: 08/07/2020**

\*The sums indicated do not necessarily correspond to the number of interception notifications sent by Traces to the exporting country. One notification may contain interceptions of several plants or harmful organisms shown individually in the tables.

For further information, please contact the Traces Support Team at [sante-traces@ec.europa.eu](mailto:sante-traces@ec.europa.eu)

**Plants or produce**

Export Country	Commodity (product type)	Plant species	Harmful organism	# Interceptions
BELARUS	PLANT_PRODUCTS_OTHERS	Wood	Nematoda	1
<b>BELARUS</b>			<b>Sum:*</b>	<b>1</b>
BURKINA FASO	OTHER_LIVING_PLANTS_FRUIT_AND_VEGETABLES	Mangifera indica	Tephritidae	3
<b>BURKINA FASO</b>			<b>Sum:*</b>	<b>3</b>

Export Country	Commodity (product type)	Plant species	Harmful organism	# Interceptions
CAMEROON	OTHER_LIVING_PLANTS_LEAFY_VEGETABLES	Ocimum	Bemisia tabaci	1
<b>CAMEROON</b>			<b>Sum:*</b>	<b>1</b>
COTE D'IVOIRE	OTHER_LIVING_PLANTS_FRUIT_AND_VEGETABLES	Mangifera indica	Tephritidae	2
<b>COTE D'IVOIRE</b>			<b>Sum:*</b>	<b>2</b>
EGYPT	OTHER_LIVING_PLANTS_FRUIT_AND_VEGETABLES	Ipomoea batatas	Sweet potato chlorotic stunt virus	1
<b>EGYPT</b>			<b>Sum:*</b>	<b>1</b>
ISRAEL	OTHER_LIVING_PLANTS_LEAFY_VEGETABLES	Ocimum basilicum	Liriomyza sativae	1
<b>ISRAEL</b>			<b>Sum:*</b>	<b>1</b>
RWANDA	OTHER_LIVING_PLANTS_FRUIT_AND_VEGETABLES	Capsicum	Tephritidae	1
	OTHER_LIVING_PLANTS_FRUIT_AND_VEGETABLES	Capsicum	Thaumatotibia leucotreta	1
<b>RWANDA</b>			<b>Sum:*</b>	<b>2</b>



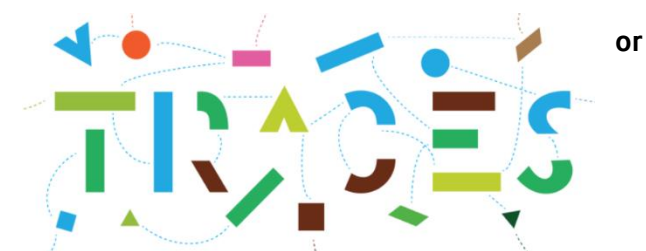
## Objects

Export Country	Commodity (product type)	Harmful organism	# Interceptions
CHINA	Case	Cerambycidae	1
<b>CHINA</b>		<b>Sum:*</b>	<b>1</b>

**Interceptions of commodities imported into the EU  
Switzerland for reasons other than presence of harmful organism (s)**

Notified during the month of: **MAY** 2020

Interceptions for reasons other than presence of harmful organism(s): **80**



**Data extracted on: 08/07/2020**

\*The sums indicated do not necessarily correspond to the number of interception notifications sent by Traces to the exporting country. One notification may contain interceptions of several plants or harmful organisms shown individually in the tables.

For further information, please contact the Traces Support Team at [sante-traces@ec.europa.eu](mailto:sante-traces@ec.europa.eu)

**Plants or produce**

Export Country	Commodity (product type)	Plant species	Object Refusal Reason	# Interceptions
BELARUS	PLANT_PRODUCTS_OTHERS	Wood	Other reasons: presence of harmful organism	1
<b>BELARUS</b>			<b>Sum:**</b>	<b>1</b>
BURKINA FASO	OTHER_LIVING_PLANTS_FRUIT_AND_VEGETABLES	Mangifera indica	Other reasons: presence of harmful organism	3
<b>BURKINA FASO</b>			<b>Sum:**</b>	<b>3</b>

Export Country	Commodity (product type)	Plant species	Object Refusal Reason	# Interceptions
CAMEROON	OTHER_LIVING_PLANTS_LEAFY_VEGETABLES	Ipomoea batatas	Other reasons: non compliance with special requirements (physical)	1
	OTHER_LIVING_PLANTS_LEAFY_VEGETABLES	Ipomoea batatas	Phyto. cert./ plant passport: incomplete Phyto. cert./ plant passport: false information	1
	OTHER_LIVING_PLANTS_LEAFY_VEGETABLES	Xanthosoma	Phyto. cert./ plant passport: incomplete Phyto. cert./ plant passport: plant not included	1
	OTHER_LIVING_PLANTS_LEAFY_VEGETABLES	Xanthosoma	Phyto. cert./ plant passport: incomplete Phyto. cert./ plant passport: false information	1
	OTHER_LIVING_PLANTS_FRUIT_AND_VEGETABLES	Zingiber officinale	Phyto. cert./ plant passport: incomplete Phyto. cert./ plant passport: false information	1
	OTHER_LIVING_PLANTS_LEAFY_VEGETABLES	Ocimum	Phyto. cert./ plant passport: incomplete Phyto. cert./ plant passport: plant not included	1
<b>CAMEROON</b>			<b>Sum:*</b>	<b>3</b>

Export Country	Commodity (product type)	Plant species	Object Refusal Reason	# Interceptions
CHILE	INTENDED_FOR_PLANTING_SEEDS	Helianthus annuus	Phyto. cert./ plant passport: absent	1
<b>CHILE</b>			<b>Sum:**</b>	<b>1</b>
COTE D'IVOIRE	OTHER_LIVING_PLANTS_FRUIT_AND_VEGETABLES	Mangifera indica	Other reasons: presence of harmful organism	2
<b>COTE D'IVOIRE</b>			<b>Sum:**</b>	<b>2</b>
EGYPT	OTHER_LIVING_PLANTS_FRUIT_AND_VEGETABLES	Ipomoea batatas	Other reasons: presence of harmful organism	1
	PLANT_PRODUCTS_OTHERS	Pinales	Other reasons: non compliance with special requirements (physical)	1
<b>EGYPT</b>			<b>Sum:**</b>	<b>2</b>
ISRAEL	OTHER_LIVING_PLANTS_LEAFY_VEGETABLES	Ocimum basilicum	Other reasons: presence of harmful organism	1
<b>ISRAEL</b>			<b>Sum:**</b>	<b>1</b>

Export Country	Commodity (product type)	Plant species	Object Refusal Reason	# Interceptions
JAPAN	OTHERS	Pinales	Phyto. cert./ plant passport: absent	1
<b>JAPAN</b>			<b>Sum:*</b>	<b>1</b>
KOSOVO	INTENDED_FOR_PLANTING_OTHERS	Acer	Phyto. cert./ plant passport: false information Phyto. cert./ plant passport: additional declaration missing Other reasons: prohibited plants, plants products or other objects Other reasons: non compliance with special requirements (physical)	1
	INTENDED_FOR_PLANTING_OTHERS	Cedrus	Phyto. cert./ plant passport: false information Phyto. cert./ plant passport: additional declaration missing Other reasons: prohibited plants, plants products or other objects Other reasons: non compliance with special requirements (physical)	1
	INTENDED_FOR_PLANTING_OTHERS	Cupressus	Phyto. cert./ plant passport: false information Phyto. cert./ plant passport: additional declaration missing Other reasons: prohibited plants, plants products	1



Export Country	Commodity (product type)	Plant species	Object Refusal Reason	# Interceptions
			or other objects Other reasons: non compliance with special requirements (physical)	
	INTENDED_FOR_PLANTING_OTHERS	Euonymus alatus	Phyto. cert./ plant passport: false information Phyto. cert./ plant passport: additional declaration missing Other reasons: prohibited plants, plants products or other objects Other reasons: non compliance with special requirements (physical)	1
	INTENDED_FOR_PLANTING_OTHERS	Ilex serrata	Phyto. cert./ plant passport: false information Phyto. cert./ plant passport: additional declaration missing Other reasons: prohibited plants, plants products or other objects Other reasons: non compliance with special requirements (physical)	1
	INTENDED_FOR_PLANTING_OTHERS	Juniperus	Phyto. cert./ plant passport: false information Phyto. cert./ plant passport: additional declaration missing Other reasons: prohibited plants, plants products or other objects Other reasons: non compliance with special requirements (physical)	1

Export Country	Commodity (product type)	Plant species	Object Refusal Reason	# Interceptions
	INTENDED_FOR_PLANTING_OTHERS	Juniperus	Phyto. cert./ plant passport: false information Phyto. cert./ plant passport: additional declaration missing Other reasons: prohibited plants, plants products or other objects Other reasons: non compliance with special requirements (physical)	1
	INTENDED_FOR_PLANTING_OTHERS	Photinia	Phyto. cert./ plant passport: false information Phyto. cert./ plant passport: additional declaration missing Other reasons: prohibited plants, plants products or other objects Other reasons: non compliance with special requirements (physical)	1
	INTENDED_FOR_PLANTING_OTHERS	Pinus mugo	Phyto. cert./ plant passport: false information Phyto. cert./ plant passport: additional declaration missing Other reasons: prohibited plants, plants products or other objects Other reasons: non compliance with special requirements (physical)	1
	INTENDED_FOR_PLANTING_OTHERS	Prunus	Phyto. cert./ plant passport: false information	1

Export Country	Commodity (product type)	Plant species	Object Refusal Reason	# Interceptions
			Phyto. cert./ plant passport: additional declaration missing Other reasons: prohibited plants, plants products or other objects Other reasons: non compliance with special requirements (physical)	
	INTENDED_FOR_PLANTING_OTHERS	Prunus cerasifera var. pissardii	Phyto. cert./ plant passport: false information Phyto. cert./ plant passport: additional declaration missing Other reasons: prohibited plants, plants products or other objects Other reasons: non compliance with special requirements (physical)	1
	INTENDED_FOR_PLANTING_OTHERS	Taxus baccata	Phyto. cert./ plant passport: false information Phyto. cert./ plant passport: additional declaration missing Other reasons: prohibited plants, plants products or other objects Other reasons: non compliance with special requirements (physical)	1
	INTENDED_FOR_PLANTING_OTHERS	Thuja	Phyto. cert./ plant passport: false information Phyto. cert./ plant passport: additional declaration missing Other reasons: prohibited plants, plants products	1

Export Country	Commodity (product type)	Plant species	Object Refusal Reason	# Interceptions
			or other objects Other reasons: non compliance with special requirements (physical)	
<b>KOSOVO</b>			<b>Sum:*</b>	<b>1</b>
MALAYSIA	INTENDED_FOR_PLANTING_SEEDS	Cucurbita pepo	Phyto. cert./ plant passport: false information Other reasons: incorrect identity declared on documents	1
<b>MALAYSIA</b>			<b>Sum:*</b>	<b>1</b>
MEXICO	OTHER_LIVING_PLANTS_FRUIT_AND_VEGETABLES	Mangifera indica	Phyto. cert./ plant passport: additional declaration inadequate or invalid	1
<b>MEXICO</b>			<b>Sum:*</b>	<b>1</b>
MOROCCO	INTENDED_FOR_PLANTING_SEEDS	Capsicum annum	Phyto. cert./ plant passport: additional declaration missing	1
<b>MOROCCO</b>			<b>Sum:*</b>	<b>1</b>

Export Country	Commodity (product type)	Plant species	Object Refusal Reason	# Interceptions
NEW ZELAND	OTHER_LIVING_PLANTS_FRUIT_AND_VEGETABLES	Malus domestica	Phyto. cert./ plant passport: additional declaration inadequate or invalid	1
<b>NEW ZELAND</b>			<b>Sum:*</b>	<b>1</b>
RUSSIAN FEDERATION	OTHER_LIVING_PLANTS_OTHERS	Picea	Phyto. cert./ plant passport: false information	1
	OTHERS	Pinus sylvestris	Phyto. cert./ plant passport: additional declaration inadequate or invalid	2
	OTHERS	Pinus sylvestris	Phyto. cert./ plant passport: false information Phyto. cert./ plant passport: additional declaration inadequate or invalid	1
	PLANT_PRODUCTS_OTHERS	Picea	Phyto. cert./ plant passport: false information	1
	PLANT_PRODUCTS_SAWN_WOOD	Larix	Other reasons: non compliance with special requirements (physical)	2
	PLANT_PRODUCTS_SAWN_WOOD	Larix	Phyto. cert./ plant passport: expired date	1
	PLANT_PRODUCTS_SAWN_WOOD	Larix		3

Export Country	Commodity (product type)	Plant species	Object Refusal Reason	# Interceptions
			Phyto. cert./ plant passport: additional declaration inadequate or invalid	
	PLANT_PRODUCTS_SAWN_WOOD	Larix	Phyto. cert./ plant passport: fake / forged	1
	PLANT_PRODUCTS_SAWN_WOOD	Larix	Phyto. cert./ plant passport: false information Phyto. cert./ plant passport: additional declaration missing	1
	PLANT_PRODUCTS_SAWN_WOOD	Picea	Phyto. cert./ plant passport: additional declaration inadequate or invalid	2
	PLANT_PRODUCTS_SAWN_WOOD	Picea	Phyto. cert./ plant passport: false information	1
	PLANT_PRODUCTS_SAWN_WOOD	Picea abies	Phyto. cert./ plant passport: false information Others	1
	PLANT_PRODUCTS_SAWN_WOOD	Picea abies	Phyto. cert./ plant passport: false information Phyto. cert./ plant passport: additional declaration inadequate or invalid	1
	PLANT_PRODUCTS_SAWN_WOOD	Pinus	Phyto. cert./ plant passport: additional declaration inadequate or invalid	1

Export Country	Commodity (product type)	Plant species	Object Refusal Reason	# Interceptions
	PLANT_PRODUCTS_SAWN_WOOD	Pinus sylvestris	Phyto. cert./ plant passport: additional declaration inadequate or invalid	4
<b>RUSSIAN FEDERATION</b>			<b>Sum:*</b>	<b>25</b>
RWANDA	OTHER_LIVING_PLANTS_FRUIT_AND_VEGETABLES	Capsicum	Other reasons: presence of harmful organism	2
<b>RWANDA</b>			<b>Sum:*</b>	<b>2</b>
SENEGAL	OTHER_LIVING_PLANTS_FRUIT_AND_VEGETABLES	Mangifera indica	Phyto. cert./ plant passport: absent	1
<b>SENEGAL</b>			<b>Sum:*</b>	<b>1</b>
SOUTH AFRICA	INTENDED_FOR_PLANTING_SEEDS	Solanum lycopersicum	Phyto. cert./ plant passport: incomplete	1
<b>SOUTH AFRICA</b>			<b>Sum:*</b>	<b>1</b>
SRI LANKA	OTHER_LIVING_PLANTS_FRUIT_AND_VEGETABLES	Solanum melongena	Phyto. cert./ plant passport: plant not included	1

Export Country	Commodity (product type)	Plant species	Object Refusal Reason	# Interceptions
<b>SRI LANKA</b>			<b>Sum:*</b>	<b>1</b>
THAILAND	INTENDED_FOR_PLANTING_SEEDS	Zea mays subsp. saccharata   Zea mays	Phyto. cert./ plant passport: additional declaration inadequate or invalid	1
	OTHER_LIVING_PLANTS_FRUIT_AND_VEGETABLES	Solanum melongena	Phyto. cert./ plant passport: additional declaration missing	1
<b>THAILAND</b>			<b>Sum:*</b>	<b>2</b>
UNITED STATES	INTENDED_FOR_PLANTING_SEEDS	Allium cepa	Others	2
	INTENDED_FOR_PLANTING_SEEDS	Asimina triloba	Phyto. cert./ plant passport: absent	1
	INTENDED_FOR_PLANTING_SEEDS	Brassica rapa	Others	1
	INTENDED_FOR_PLANTING_SEEDS	Capsicum annuum	Other reasons: incorrect identity declared on documents	1



Export Country	Commodity (product type)	Plant species	Object Refusal Reason	# Interceptions
	INTENDED_FOR_PLANTING_SEEDS	Solanum lycopersicum	Phyto. cert./ plant passport: additional declaration missing	1
	INTENDED_FOR_PLANTING_SEEDS	Zea mays	Phyto. cert./ plant passport: absent	1
	PLANT_PRODUCTS_OTHERS	Pinus palustris	Phyto. cert./ plant passport: absent	1
	PLANT_PRODUCTS_SAWN_WOOD	Juglans nigra	Phyto. cert./ plant passport: expired date	1
<b>UNITED STATES</b>			<b>Sum:*</b>	<b>9</b>
VIET NAM	INTENDED_FOR_PLANTING_SEEDS	Capsicum annuum	Phyto. cert./ plant passport: additional declaration missing	1
<b>VIET NAM</b>			<b>Sum:*</b>	<b>1</b>

## Objects

Export Country	Commodity (product type)	Refusal reason	# Interceptions
BELARUS	wood	Other reasons: non compliance with special requirements (physical)	1
<b>BELARUS</b>		<b>Sum:*</b>	<b>1</b>
CHINA	Mixed forest plants	Other reasons: non compliance with special requirements (physical)	1
<b>CHINA</b>		<b>Sum:*</b>	<b>1</b>
GHANA	wood	Other reasons: non compliance with special requirements (physical)	1
<b>GHANA</b>		<b>Sum:*</b>	<b>1</b>

Export Country	Commodity (product type)	Refusal reason	# Interceptions
MOROCCO	Pinales	Other reasons: non compliance with special requirements ( physical )	1
<b>MOROCCO</b>		<b>Sum:*</b>	<b>1</b>
RUSSIAN FEDERATION	Mixed forest plants	Other reasons: non compliance with special requirements ( physical )	4
	wood	Other reasons: non compliance with special requirements ( physical )	2
<b>RUSSIAN FEDERATION</b>		<b>Sum:*</b>	<b>6</b>
TURKEY	Mixed forest plants	Other reasons: non compliance with special requirements ( physical )	1
<b>TURKEY</b>		<b>Sum:*</b>	<b>1</b>

Export Country	Commodity (product type)	Refusal reason	# Interceptions
UKRAINE	Mixed forest plants	Other reasons: non compliance with special requirements ( physical )	3
<b>UKRAINE</b>		<b>Sum:*</b>	<b>3</b>
UNITED STATES	wood	Other reasons: non compliance with special requirements ( physical )	5
<b>UNITED STATES</b>		<b>Sum:*</b>	<b>5</b>