



**National Sanitary Veterinary and Food  
Safety Authority**



**Implementation in Romania of  
the 2015 co-financed programme  
for control and monitoring of  
Classical Swine Fever**



***SCoPAFF, 1<sup>st</sup> – 2<sup>nd</sup> of June 2016  
Brussels***

# **Content**

- Description**
- General Objectives**
- Evolution 2015**
- Synthesis**
- Conclusion**

# General Objectives (1)

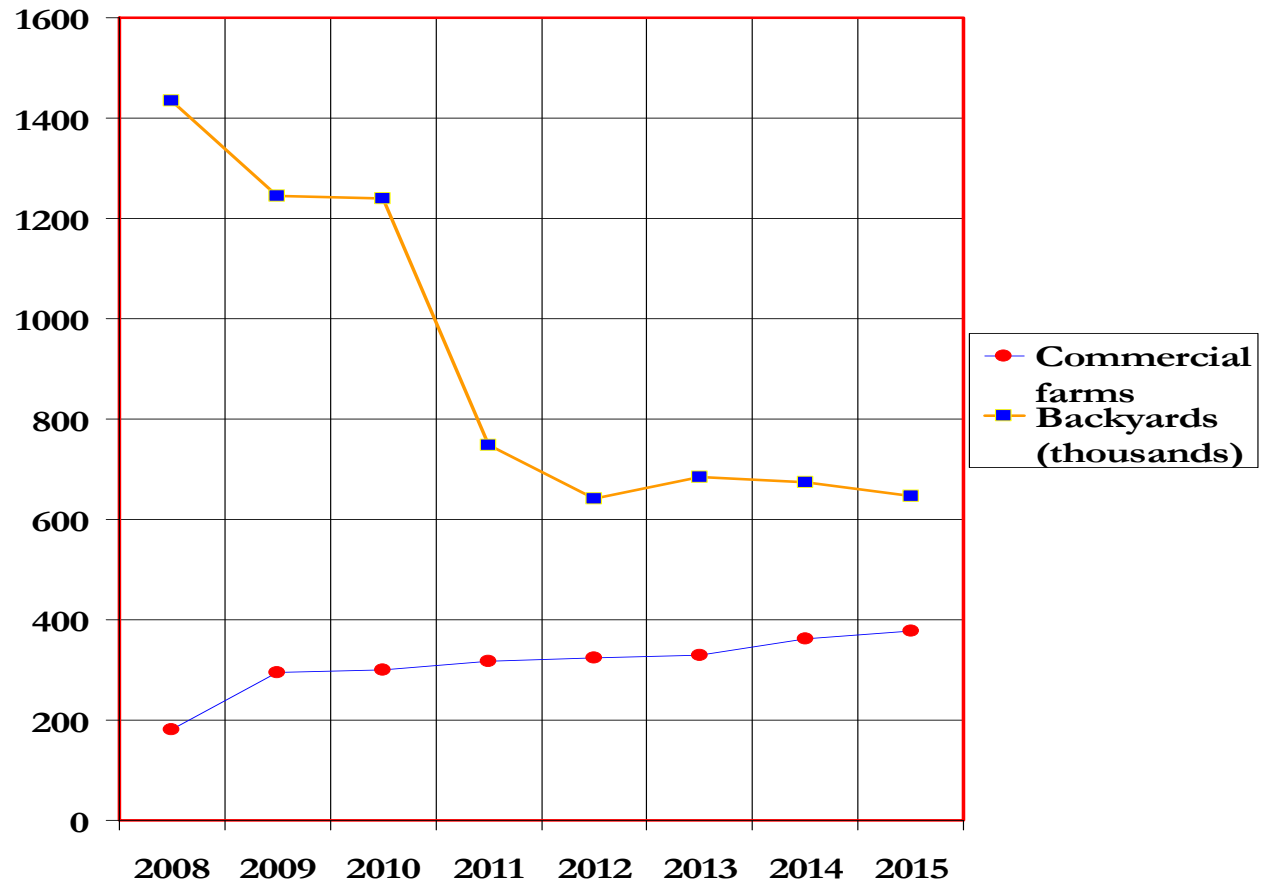
- surveillance of the health status of domestic and wild pig population
- demonstrate the absence of the CSF virus circulation
- demonstrate freedom of CSF

# Implementation of the programme

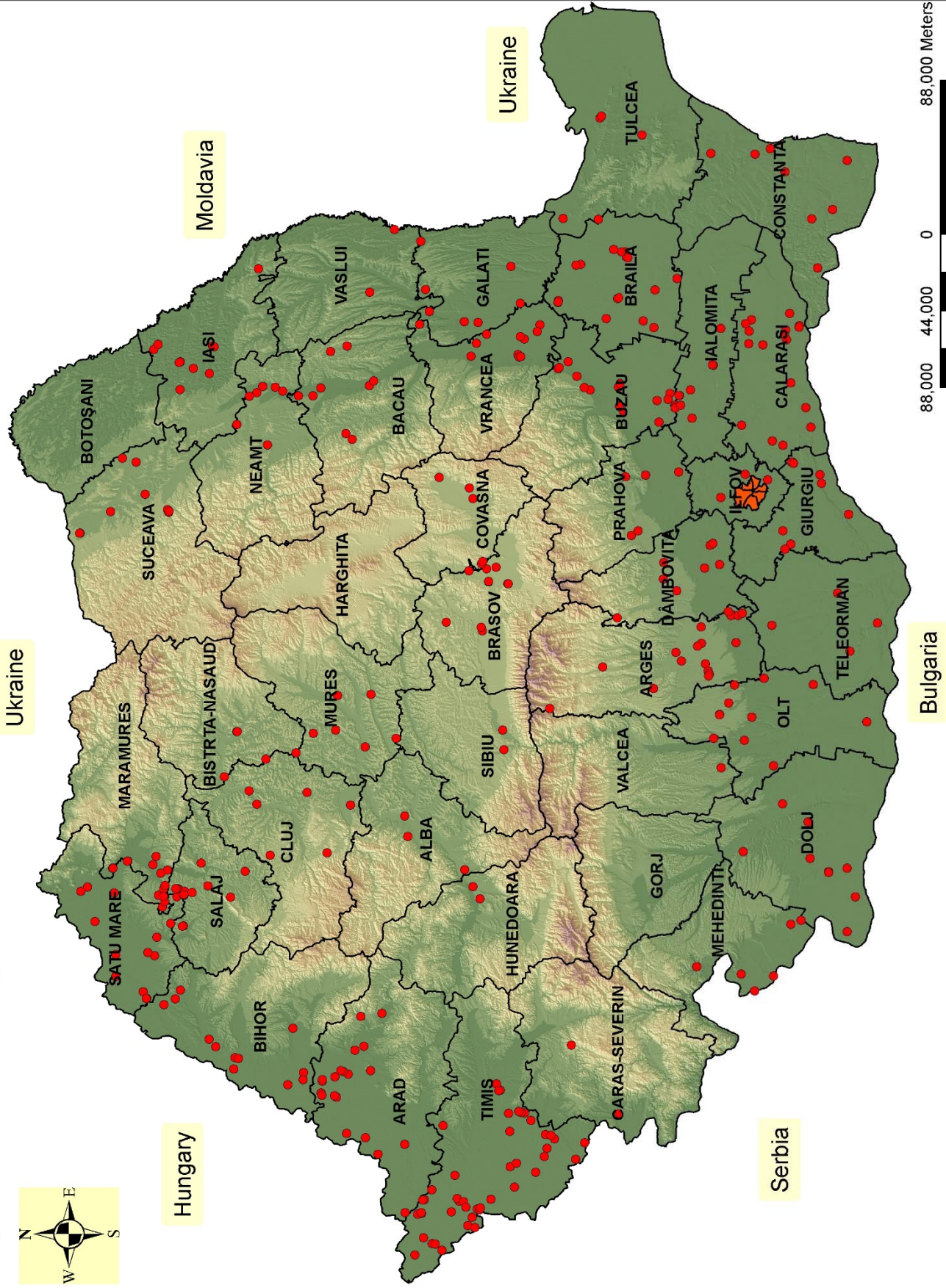
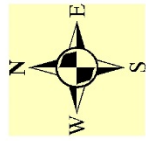
- Target population – entire domestic and wild pig population of the country
- Methods -Active and passive surveillance
  - by clinical inspections, serology and virology surveillance

# Pig population dynamic and distribution (1)

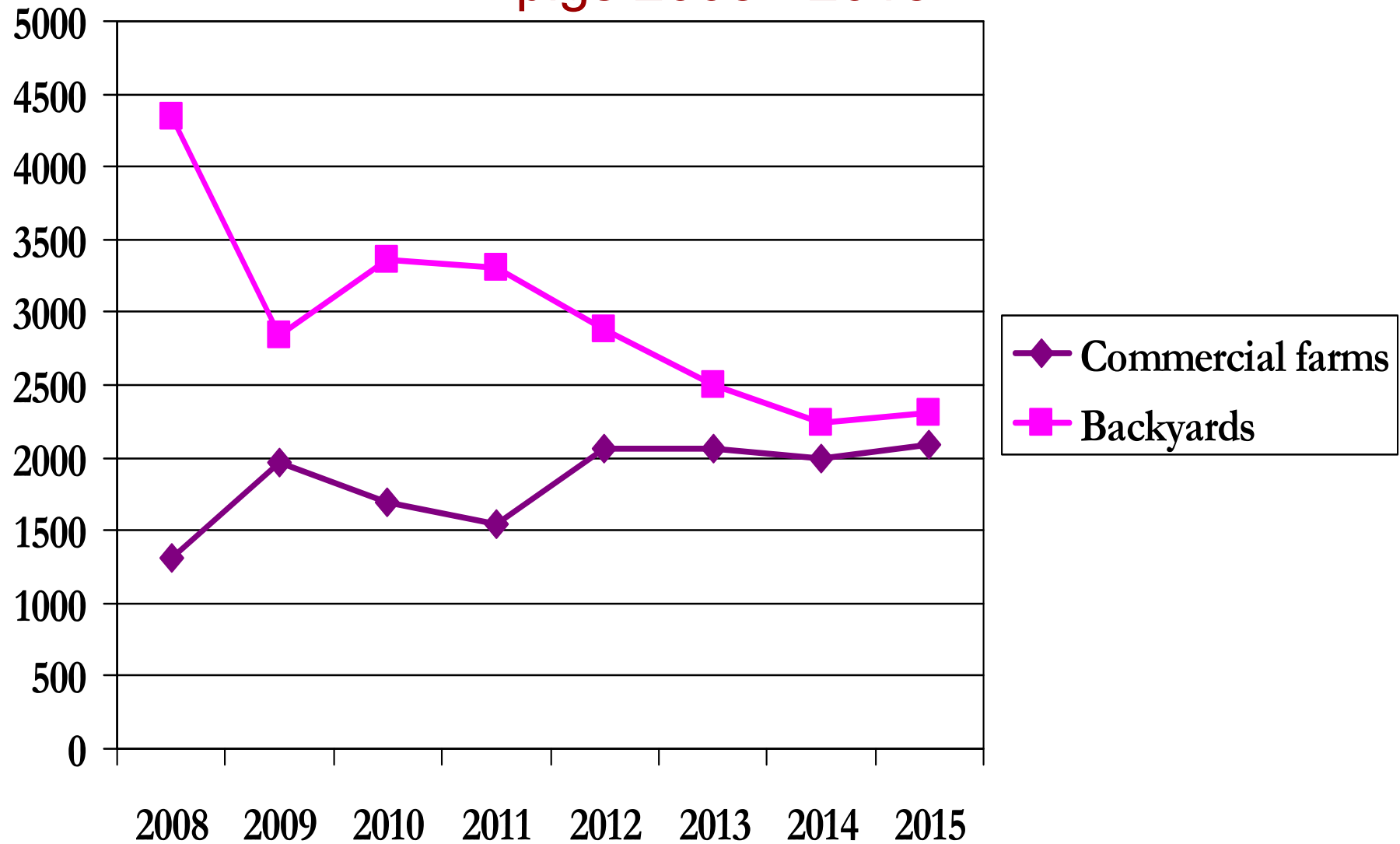
## Dynamic of the pig holdings 2008-2015



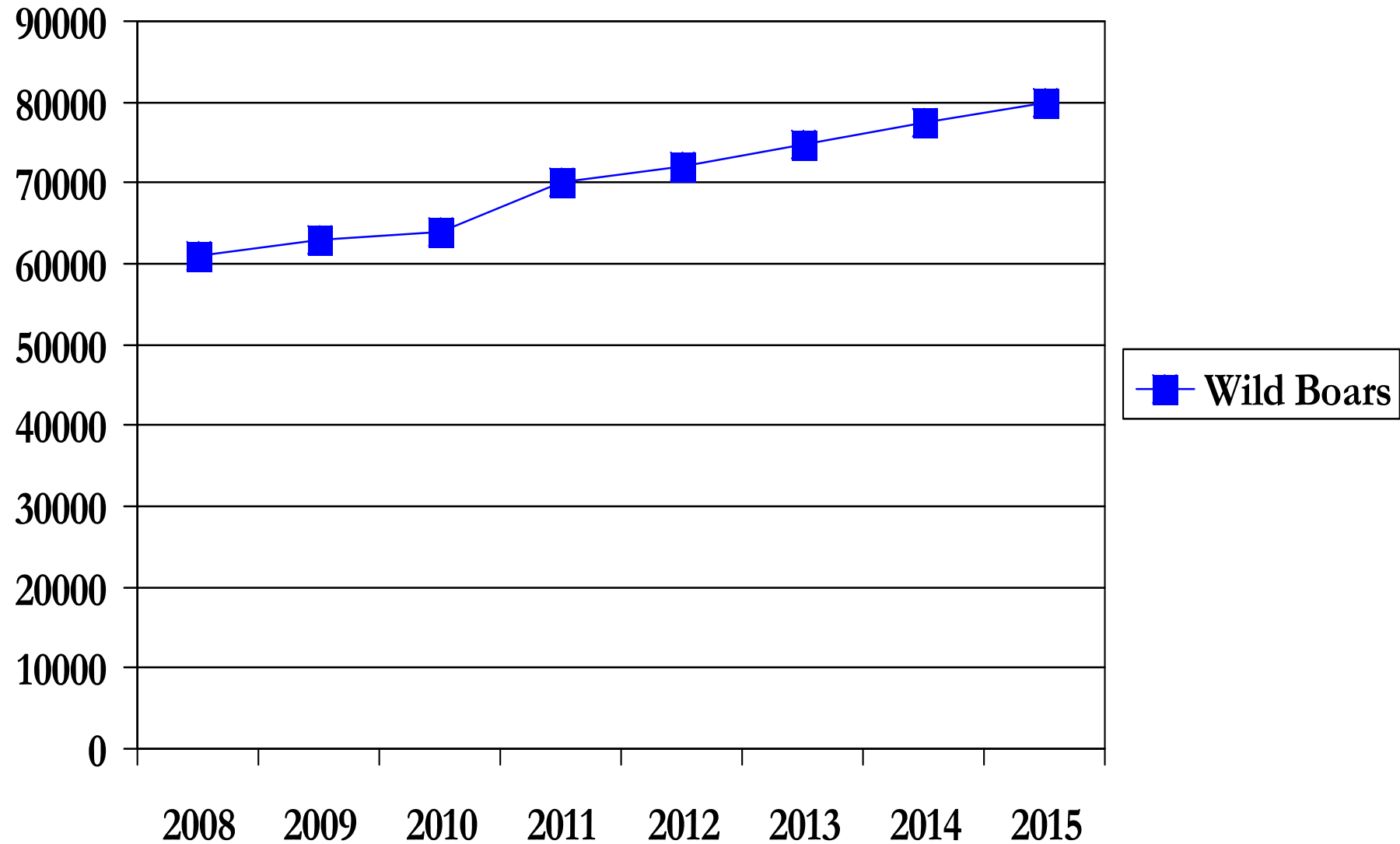
# Pigs Comercial Holdings at 25.05.2016



## Pig population dynamic and distribution (2) Evolution of the number (thousands) of domestic pigs 2008 - 2015



# Evolution of Wild Boars population 2008-2015





# Serological Surveillance in backyard holdings 2015

## Active serological surveillance

- **First campaign:** February-May – blood samples from all breeding sows
- **Second campaign:** June-July - randomly sampling of locality, herds and animals taking into consideration a prevalence of 5% with 95% confidence
- **A third campaign:** November - randomly sampling of animals taking into consideration a prevalence of 0,5% with 95% confidence from each chosen locality

**Due to financial constraints the 3rd -active surveillance campaign was not performed**

## Passive surveillance

- From all aborted sow
- From ill pigs with clinical signs that can also be seen in CSF

# Virological surveillance in backyards holdings 2015

RT- PCR on

- organs from dead pigs with lesions that can be seen also in CSF
- blood from aborted sow
- blood from ill pig with clinical signs that can be seen also in CSF
- avortons

# **Serological surveillance in commercial farms 2015**

## **Active surveillance**

- randomly sampling of fattening pigs, with a prevalence of 5% and 95% confidence in June-July

## **Passive surveillance**

- From all aborted sow
- From all ill pigs with clinical signs that can be seen also in CSF

# Virological surveillance in Commercial farms 2015

RT- PCR on

- organs from dead pigs with lesions that can be seen also in CSF
- organs from dead pigs when the dead pigs is above technological mortality
- blood from aborted sow
- blood from ill pig with clinical signs that can be seen also in CSF
- avortons

# Surveillance in wild boars

-serological surveillance using ELISA on all hunted wild boars

-virological surveillance using RT-PCR and FAT of all hunted and found dead wild boar

## Active surveillance

237153 animals tested by ELISA

Campaign	Commercial holdings (no of tested animals)	Backyard Holdings (no of tested animals)
February - May		89373 sows
June - July	39200 fattening pigs	108580 fattening pigs
TOTAL	39200	197953

# Passive surveillance backyards holdings 2015

Year	Animals	Samples	ELISA		PCR		FAT
			Serum	Blood EDTA	Org	Fetus	Sternum
2015	5619	7193	154	4637	2360	36	6

## Passive surveillance commercial holdings 2015 at December 31

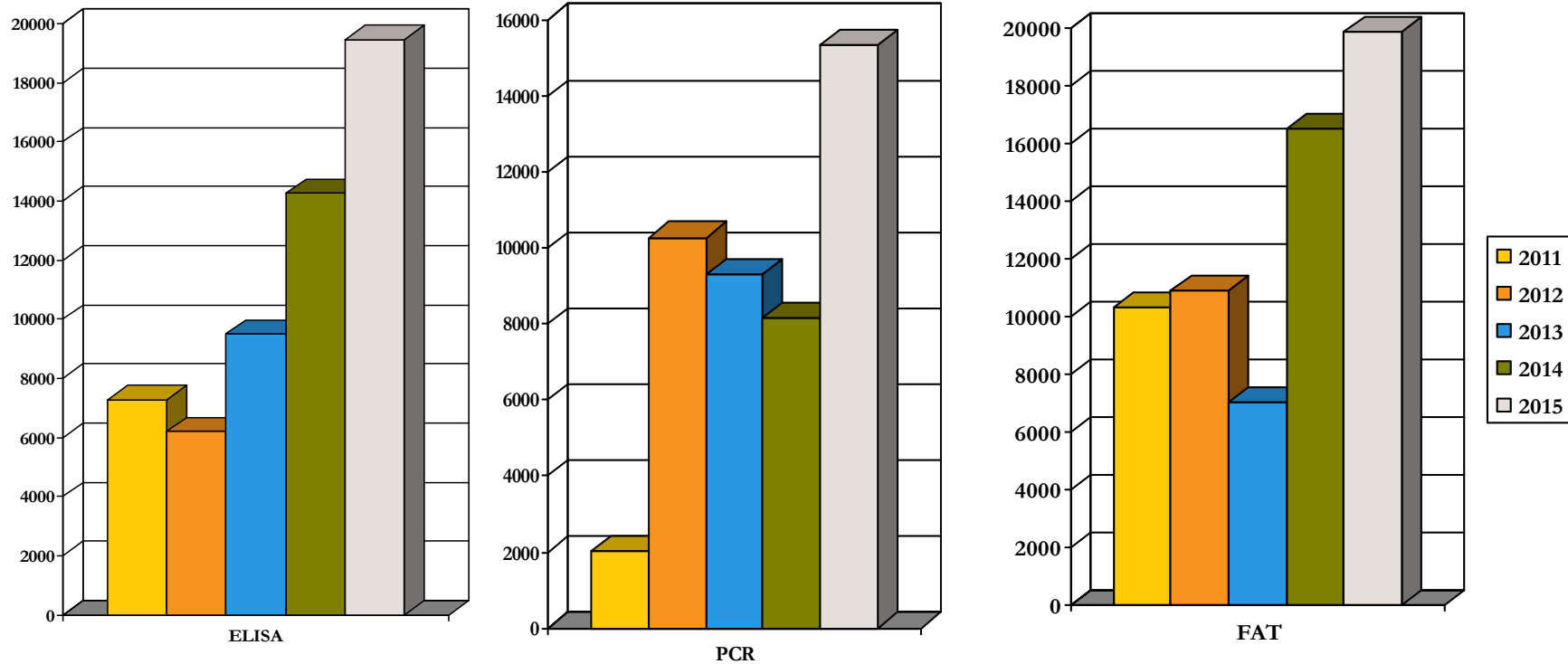
Year	Animals tested				Tests	
	Sows	Sick	Dead	Fetus	ELISA	PCR
2015	1150	2374	2663	116	1202	6205



# Wild boars surveillance 2015

Wild boars	Animals tested in 2015	Elisa	FAT	RT-PCR
<b>TOTAL</b>	<b>19915</b>	<b>19453</b>	<b>19862</b>	<b>15320</b>

# Evolution 2011-2015 - Tested wild boars



	ELISA	FAT	PCR
<b>2011</b>	7280 (90 positive*)	10318 all negative	2016 all negative
<b>2012</b>	6191 (33 positive*)	10884 all negative	10264 all negative
<b>2013</b>	9492 (6 positive*)	14477 all negative	9278 all negative
<b>2014</b>	14259 (6 positive*)	16521 all negative	8135 all negative
<b>2015</b>	19453 (11 positive*)	19862 all negative	15320 all negative

\* Old vaccinated animals

## Costs of CSF program -2015

<b>TOTAL COST Sampling</b>	<b>COST of Tests Domestic Pigs</b>	<b>COST of Tests Wild Boars</b>	<b>TOTAL COST Tests</b>	<b>TOTAL COST General</b>
<b>527533 EUR</b>	<b>899,661.73 EUR</b>	<b>250765,76 EUR</b>	<b>1150427,49 EUR</b>	<b>1,677,960.49 EUR</b>

1,089,525 backyards inspected in 2015 by empowered private vets for the clinical inspections of pigs  $\approx$  6 millions EUR

Cost of inspections **are not co-financed by European Commission**

## Final remarks

- The last cases of CSF reported from Romania in domestic or feral pigs date back to 2007.
- Romania is still listed in the Annex to Commission implementing Decision 2013/764/EU concerning animal health control measures relating to CSF in certain Member States (Mss).
- Programmes implemented since 2012 with intense active and passive surveillance on unvaccinated animals demonstrated the absence of the CSF virus. This entitles Romania to be considered as free of CSF.

Thank you for your  
attention !

