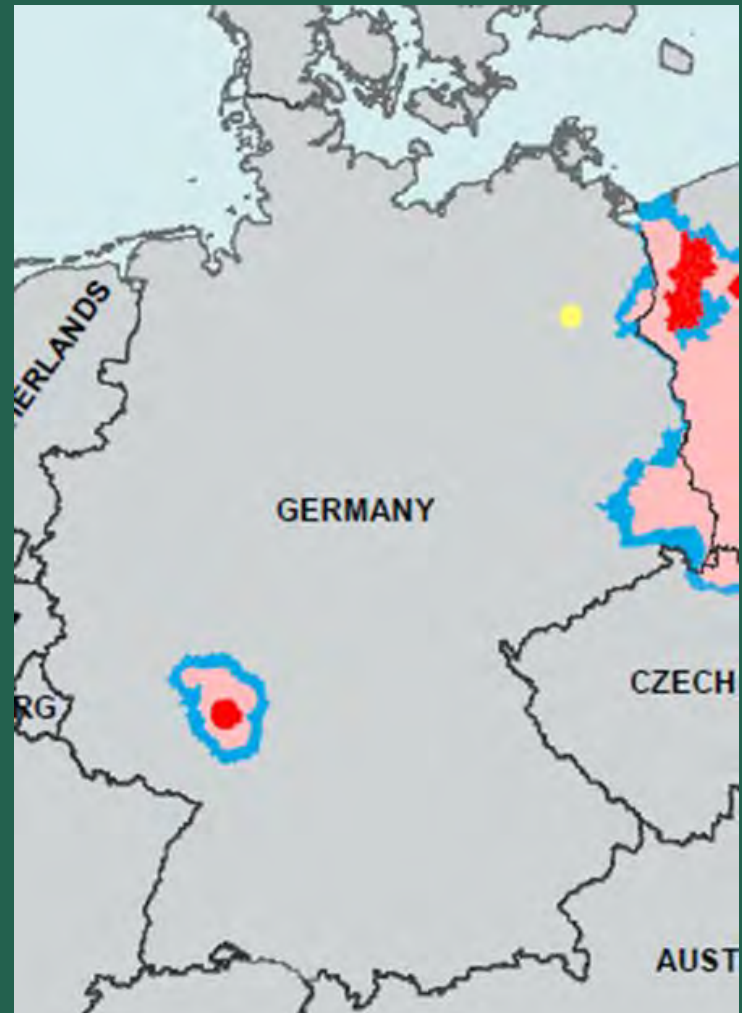




# African Swine Fever in DEU

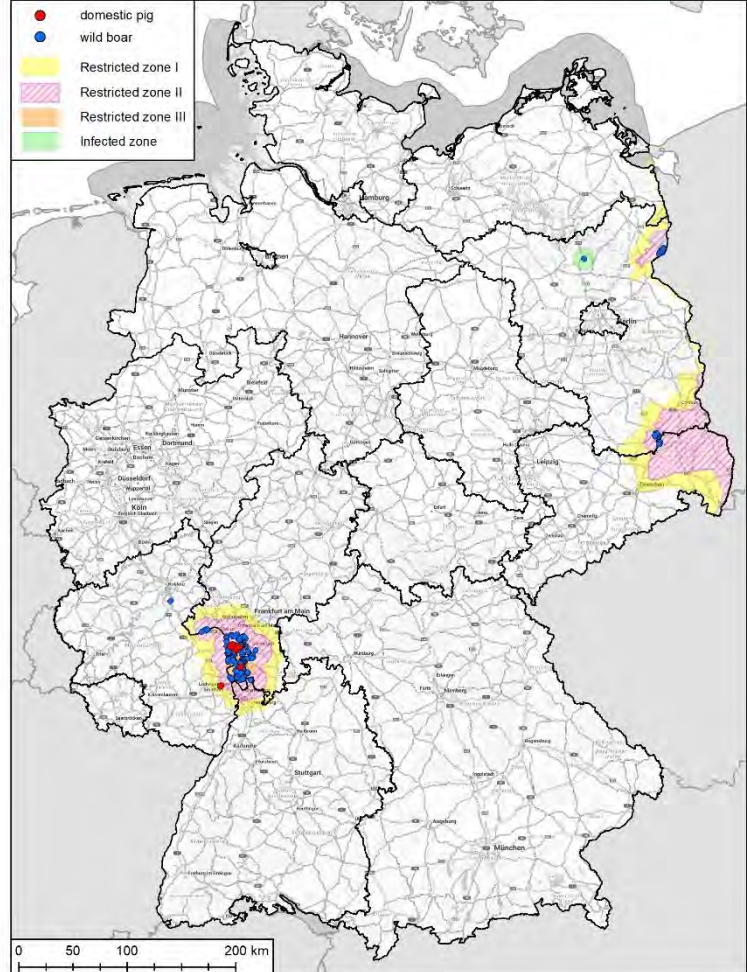
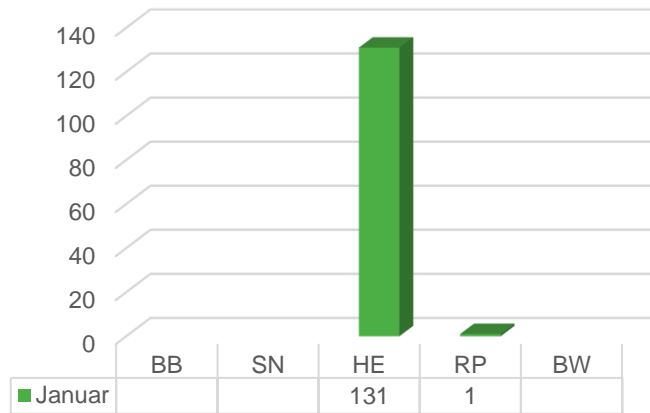
SCoPAFF January 2025

ASF in DEU  
– overview –



# ASF in wild boar in DEU in 2025 -

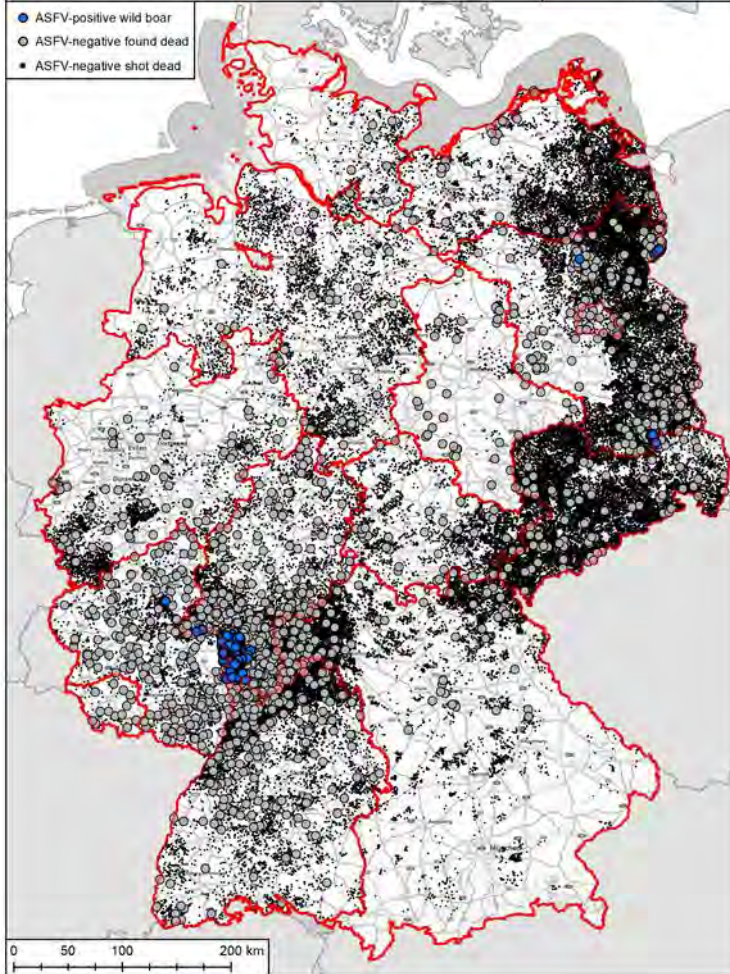
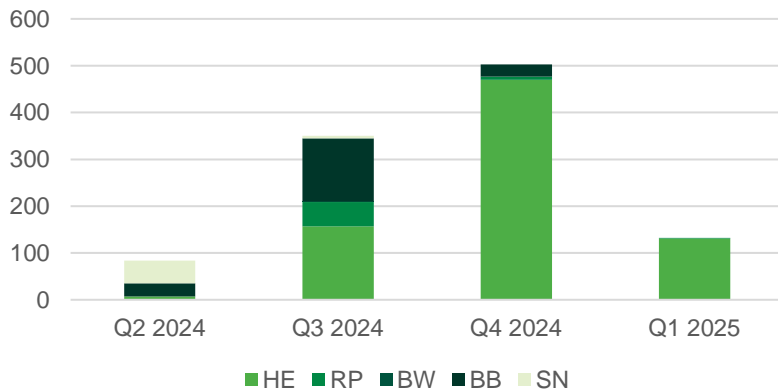
132 cases on January 20<sup>th</sup>



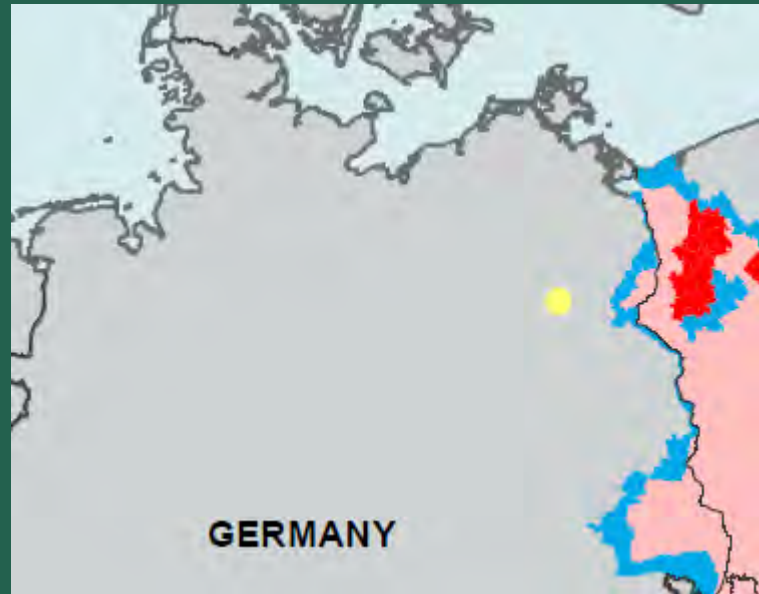
# ASF in DEU - since April 2024

## and surveillance since July 20<sup>th</sup> 2024

ASF numbers in DEU per quarter



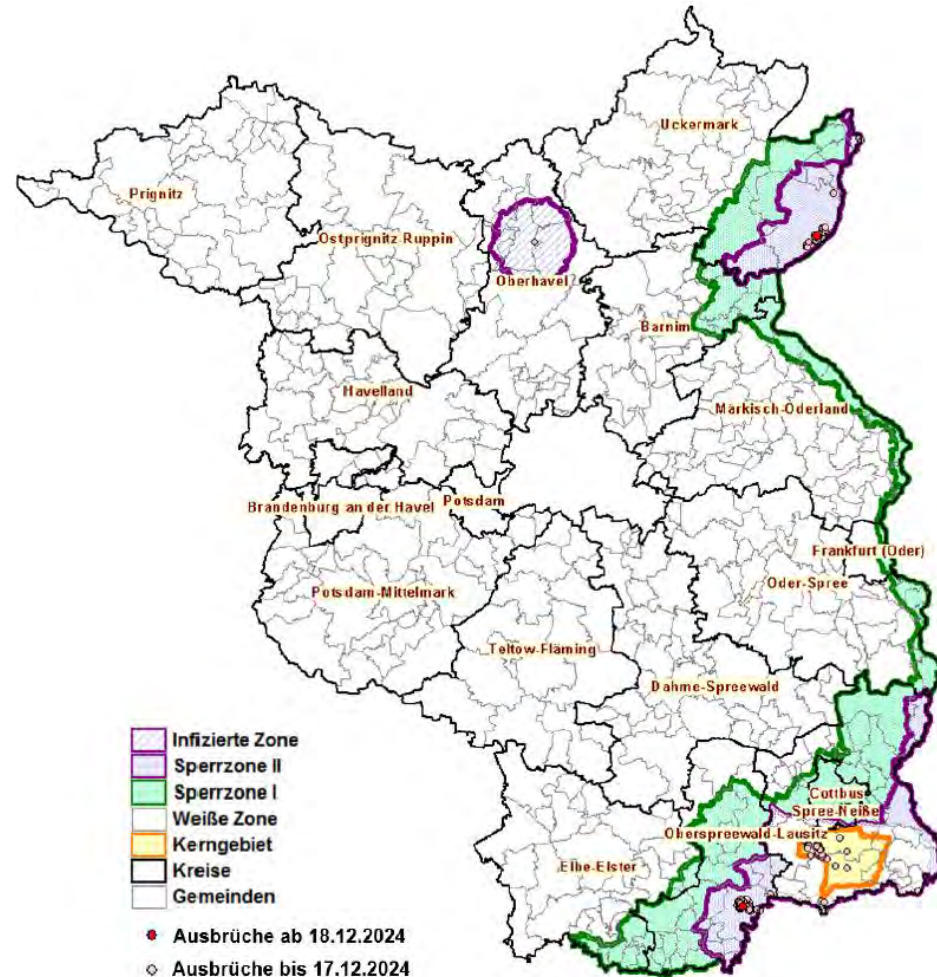
ASF in BB

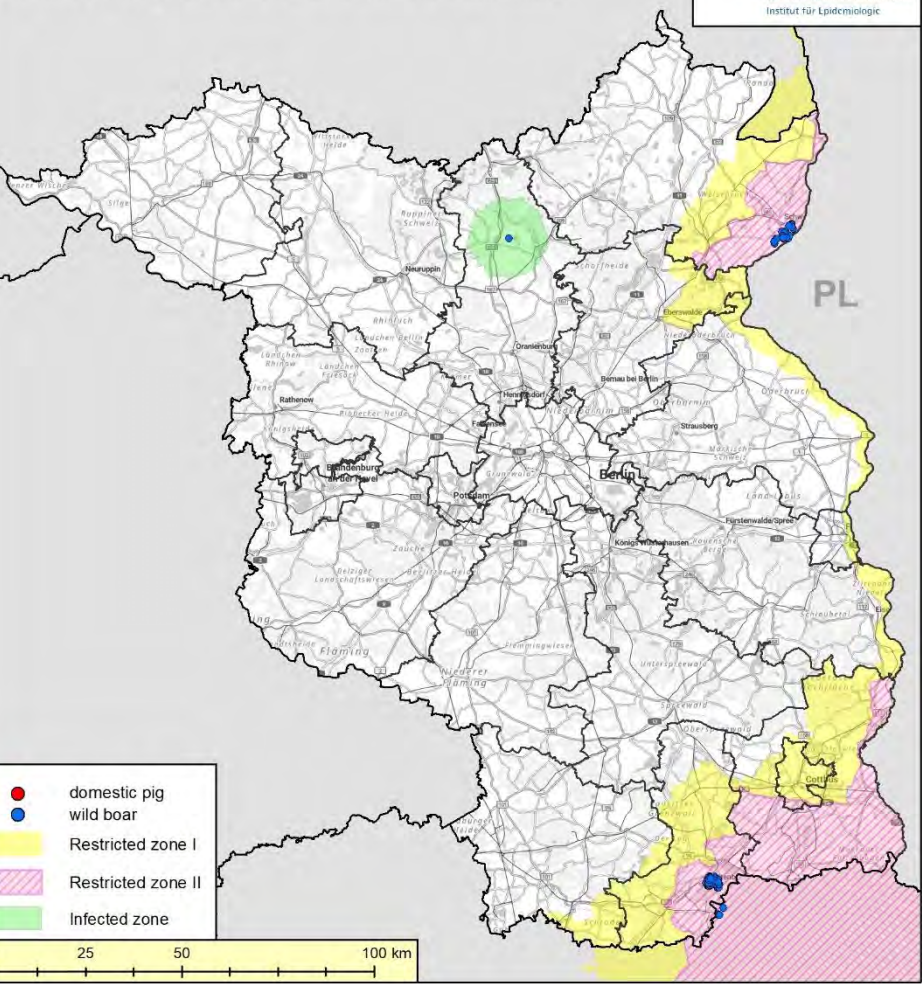


# ASF in district Oberhavel, BB

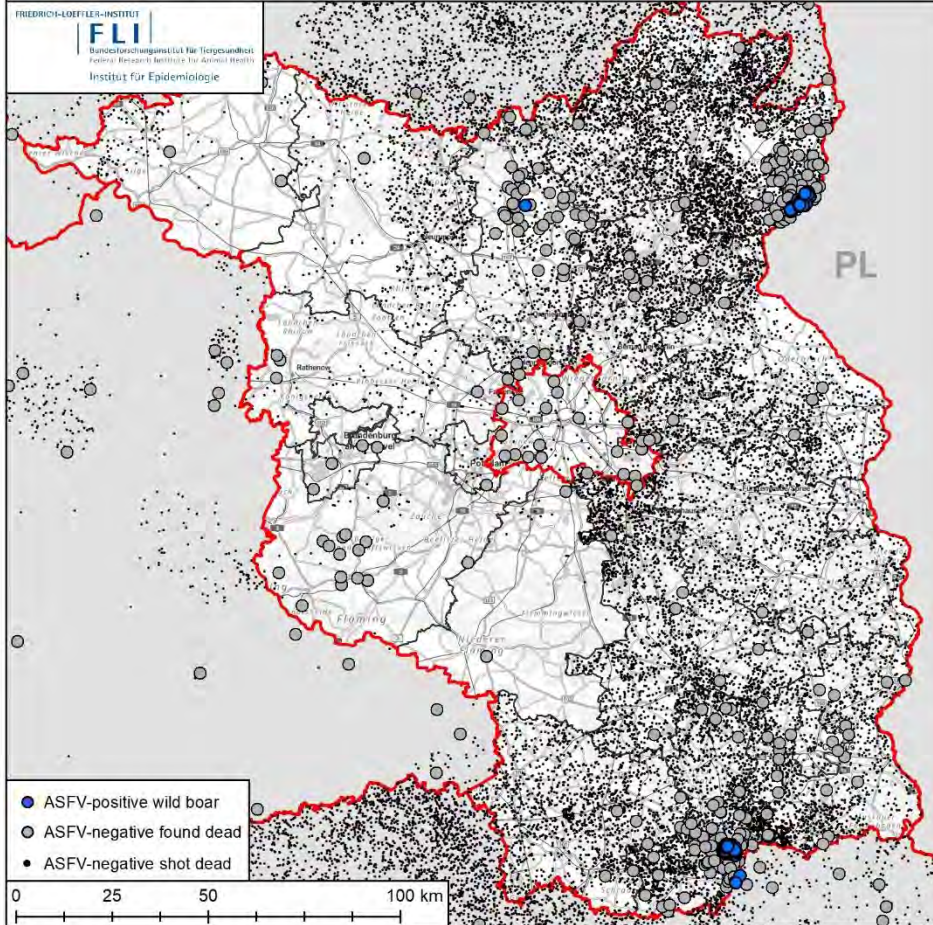
Measures as usual are in place in **Infected Zone** :

- ✓ Regular, active search for carcasses (people/dogs/drones)
- ✓ All tested wild boar negative
- ✓ Checks on pig establishments performed
- ✓ Trapping
- ✓ Sampling of all hunted wild boar in district Oberhavel and neighbouring administrative divisions





## African Swine Fever active and passive surveillance in Brandenburg



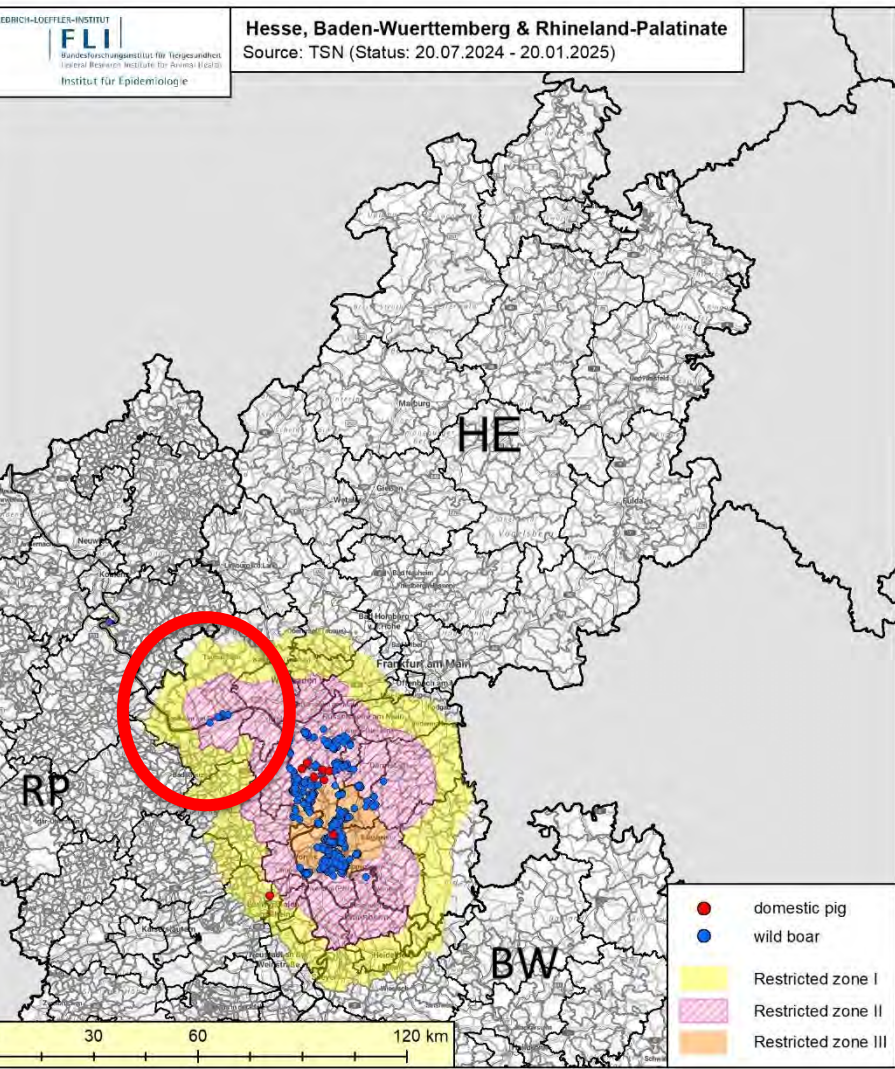
# ASF in Hesse and Rhineland Palatinate (RP)





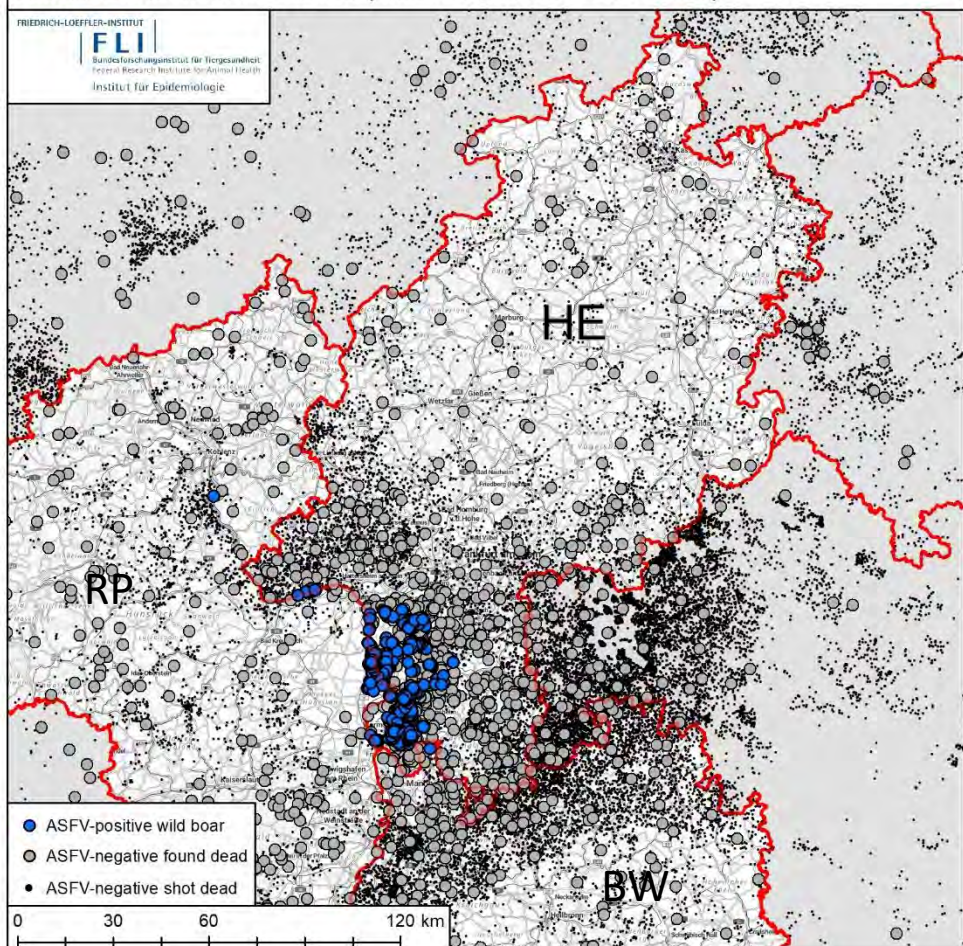
## Hesse, Baden-Wuerttemberg & Rhineland-Palatinate

Source: TSN (Status: 20.07.2024 - 20.01.2025)



## African Swine Fever active and passive surveillance in Baden-Wuerttemberg, Hesse and Rhineland Palatinate

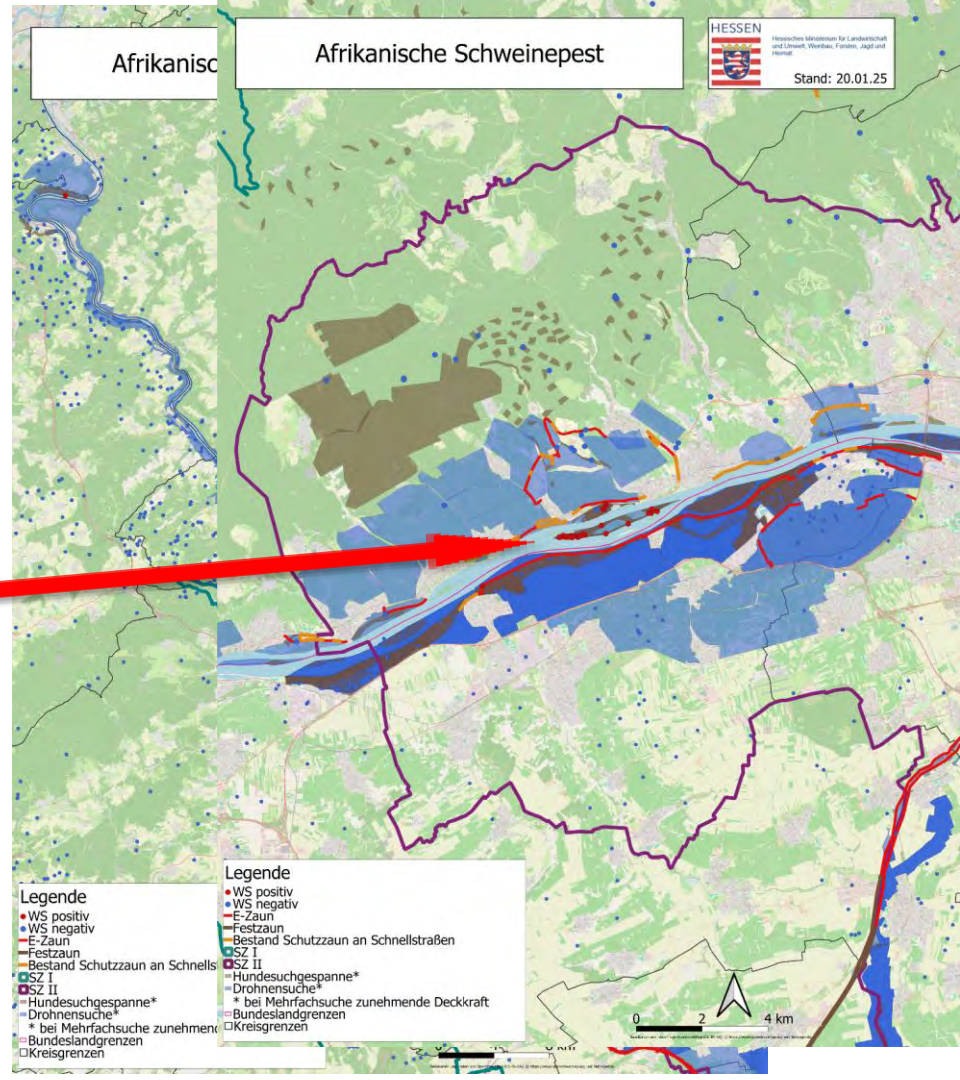
Source: EURL CSF/ASF-WB-DB (Status: 20.07.2024 - 20.01.2025)



# ASF in HE and RP

Measures as usual are in place in enlarged RZ II and alongside the Rhein towards Boppard:

- ✓ Regular, active search for carcasses (dogs/drones)
- ✓ Fencing is going on (first electrical, change to solid)
- ✓ On the island of Mariannenaue up to 30 wild boar ASF positive
- ✓ Trapping in place (on this and other islands/next to the river/ in the fenced forest next to Mainz, RP)



→ downstream / westwards



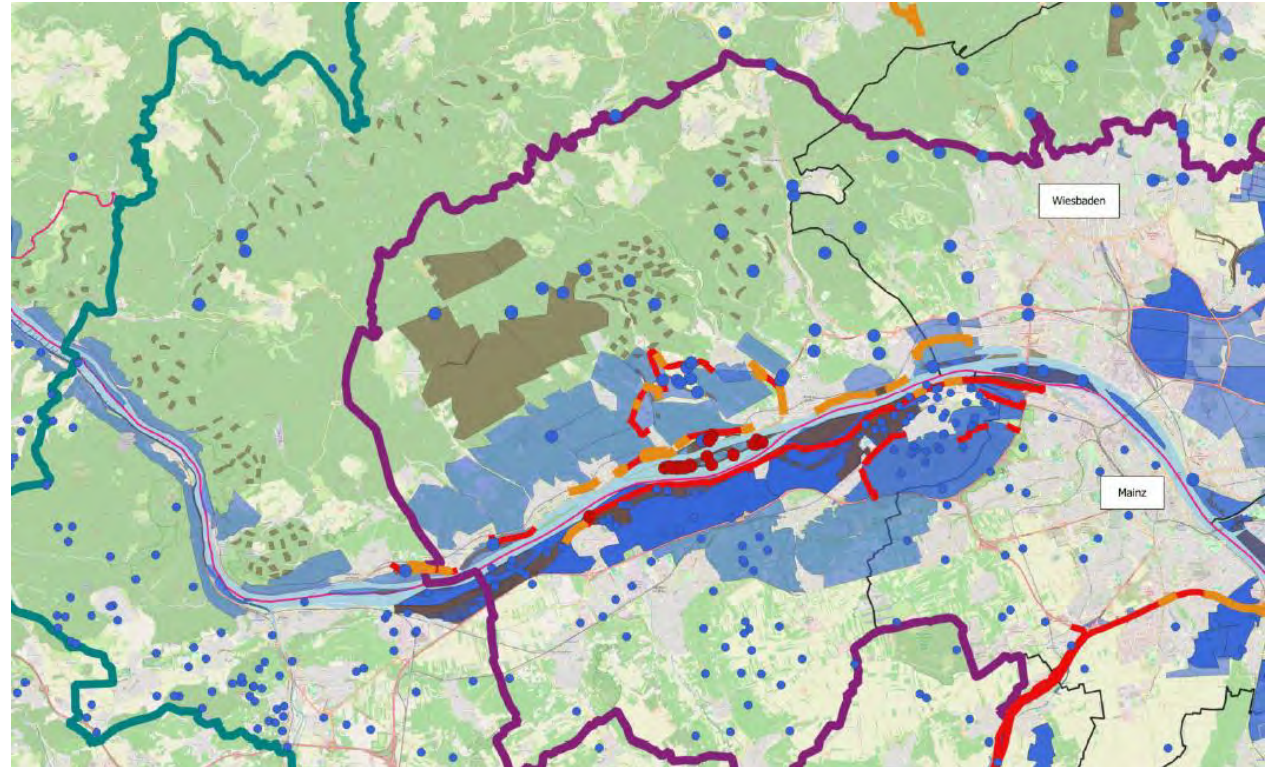
# ASF in HE and RP Island of Mariannenaue

→ upstream / eastwards



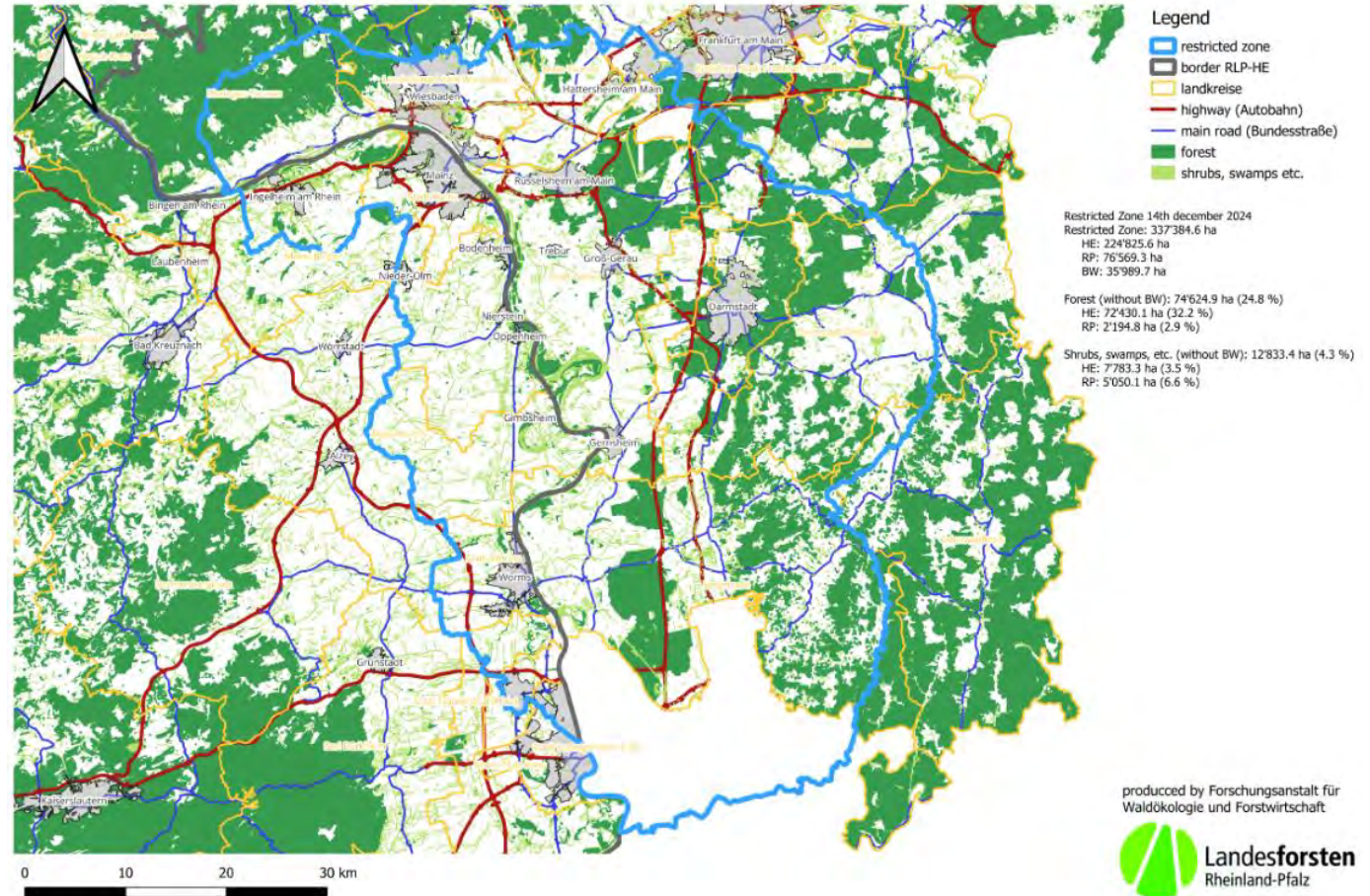
# ASF in HE + RP

## ASF on Island of Mariannenaue (HE)



# ASF in HE and RP – wild boar habitat

Forest & shrub coverage



# ASF in RP + HE

## Regular active search for carcasses

HE

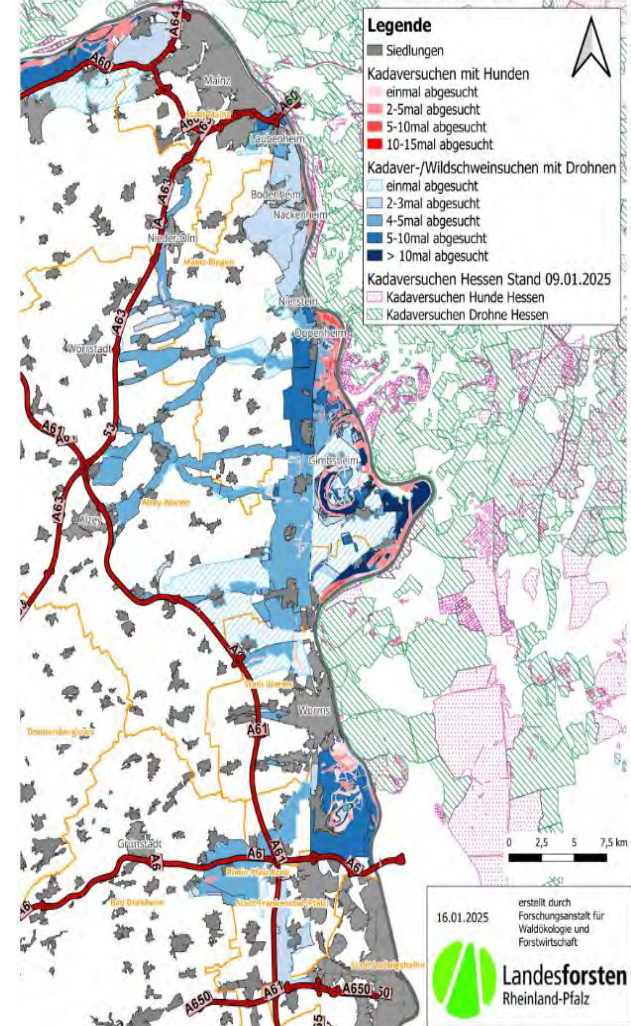
<b>Kadaversuche**</b> (zentral gesteuert über TCRH)	Einsatzkräfte (Vortag):		40
	Anzahl Suchgebiete (Vortag):		52
	abgesuchte Fläche (Hund):	(seit 15.06.)	109.160 ha**
	abgesuchte Fläche (Drohne):	(seit 15.06.)	109.519 ha**
** Die kumulierte Gesamtfläche enthält Suchflächen angrenzender Länder.			

RP

Abgesuchte Flächen seit 21.06.2024

Suchenart	02.01.2025	16.01.2025	Differenz
Drohne	124.258 ha	147.371 ha	23.113 ha
Drohne ohne Mehrfachsuchen	37.025 ha	38.436 ha	1.411 ha
Hunde	7.104 ha	8.282 ha	1.178 ha
Hunde ohne Mehrfachsuchen	3.839 ha	4.023 ha	184 ha

Durchgeführte Kadaver- und Wildschweinsuchen - Stand 16.01.2025



# ASF in HE + RP close to Mariannenaue

Durchgeführte Kadaver- und Wildschweinsuchen Rheinauen - Stand 16.01.2025



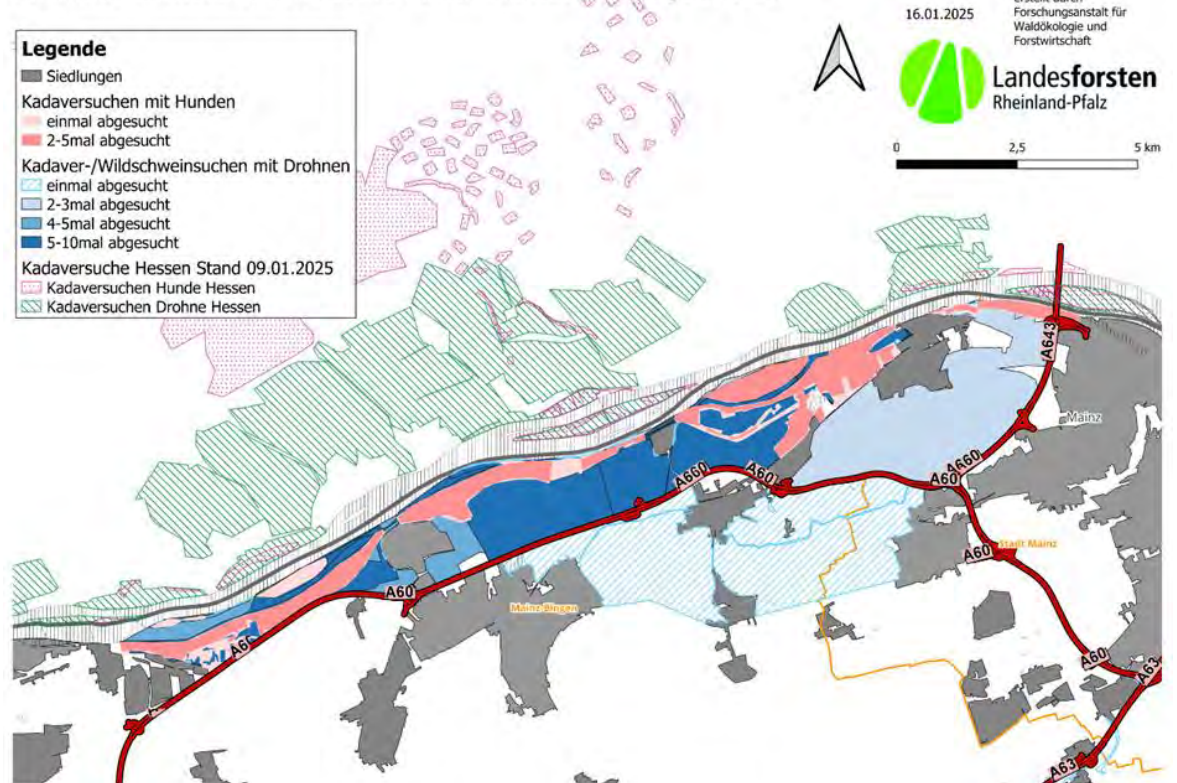
16.01.2025

erstellt durch  
Forschungsanstalt für  
Waldökologie und  
Forstwirtschaft

**Landesforsten**  
Rheinland-Pfalz



0 2,5 5 km



Bundesministerium  
für Ernährung  
und Landwirtschaft

# Conclusions

- Due to high effort and sustainable measures ASF is successfully being diminished in eastern areas in DEU
- High risk area in HE has moved southwards
- White Zones and trapping are to be adapted
- No more outbreaks in domestic pig establishments in RZ III in HE/RP
- Event of ASF in wild boar on the Island Mariannenaue, traps in place, river fenced
- One single wild boar 1km downstream of Mariannenaue on RP side – no more wild boar findings there
- Surveillance and biosecurity in pig establishments / wild boar / hunting are in place
- Awareness campaigns are part of daily work



## Thanks to the colleagues of:

- Friedrich-Loeffler-Institute
- Ministry of Brandenburg
- Ministry of Hesse
- Ministry of Rhineland Palatinate

# Thank you for your attention!

Federal Ministry of Food and Agriculture  
Directorate 3  
Unit 323 – Animal Diseases -  
EU-Trade, International Affairs, Crisis Centre  
Rochusstr. 1  
53123 Bonn

Dr. Christina Haarmann  
323@bmel.bund.de  
www.bmel.de  
Tel. +49 30 12 345-3922