



National Sanitary Veterinary and Food Safety
Authority of Romania

Information on Newcastle disease in a backyard holding in Romania

PAFF Committee, 5-6-th March 2015
Brussels





Newcastle disease outbreak in a backyard holding, 29 January 2015 Romania, Constanta County, Dulcesti locality

Newcastle disease outbreak in backyard holding;

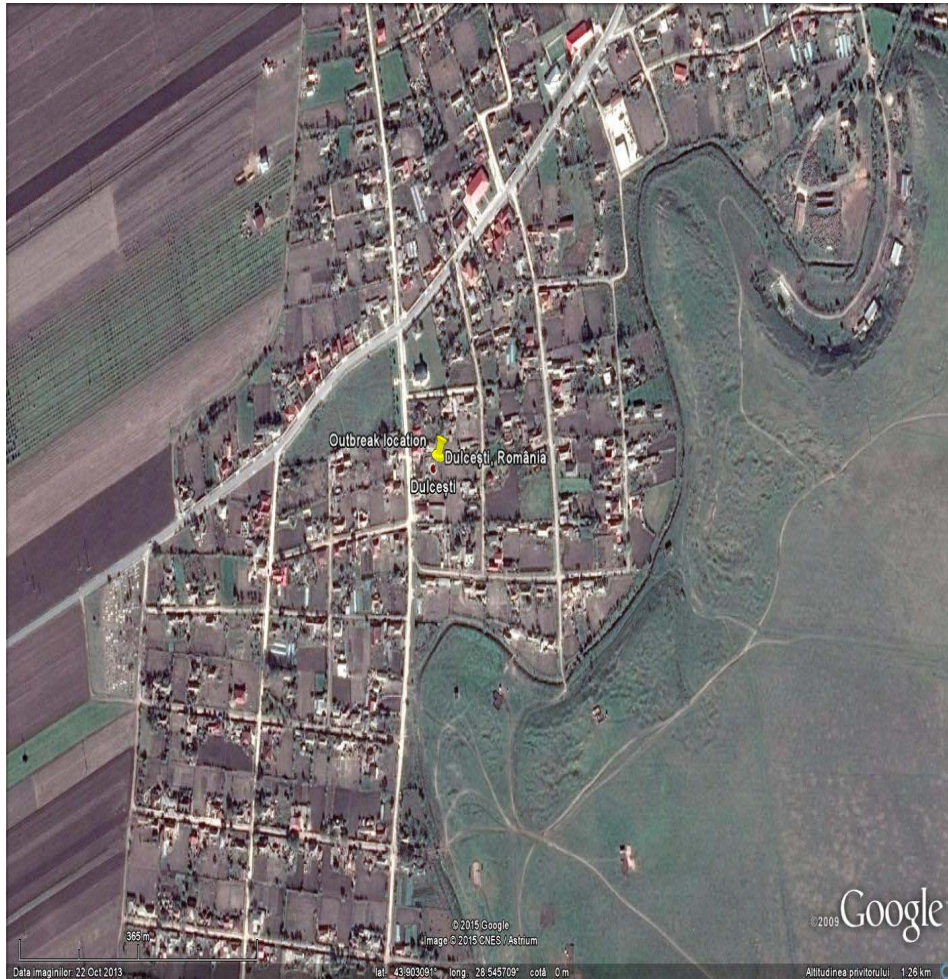
- Location of the outbreak:
Constanta County,
Dulcesti locality,
South-East of Romania

Longitude: 28 32 41

Latitude: 43 54 11



Newcastle disease outbreak in a backyard holding, 29.01.2015, Romania, Constanta County, Dulcesti locality



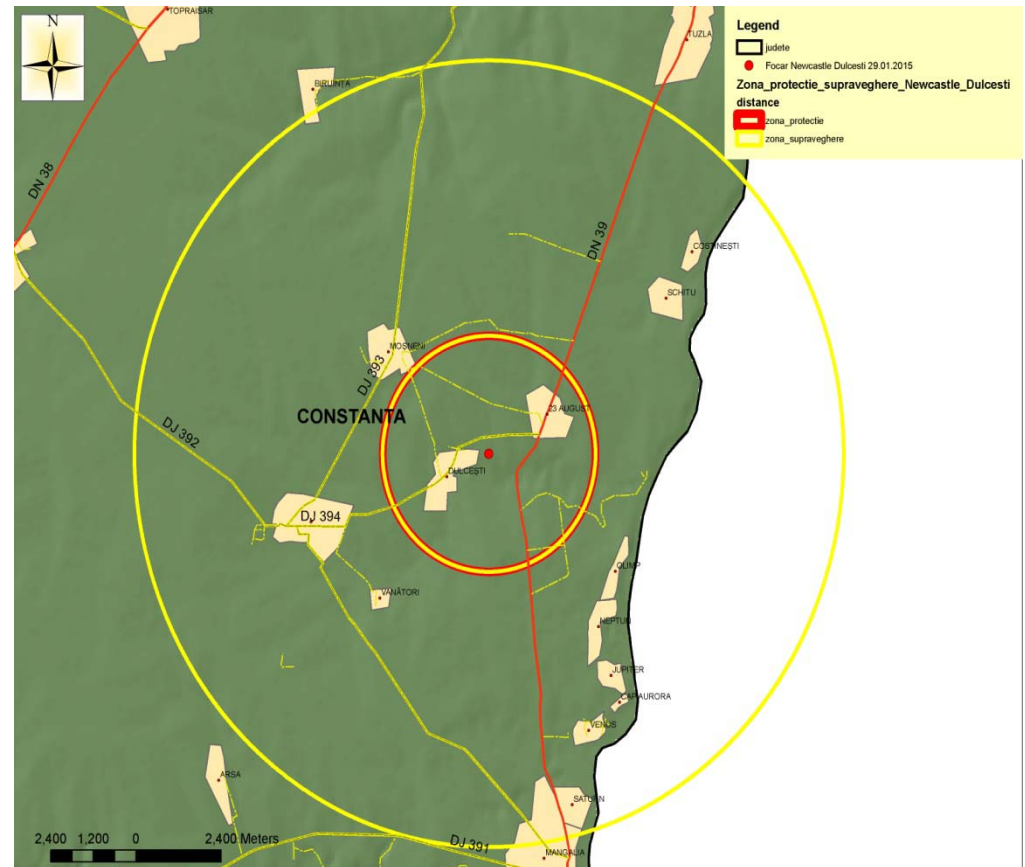
- Outbreak in a backyard holding with an initially flock of 65 unvaccinated hens
- **First signs of disease** on 16-th January 2015 when poultry suddenly start to dye.
- **Suspicion** notified on 21 January to SVFSD Constanta.
- **Confirmation** at IDAH on 29 January 2015 .
- Tests performed: virus isolation on inoculated eggs, identification of the viral genome by RT-PCR and identification and characterization of NDV by PCR secentiation;
- control measures accordingly with the Council Directive 92/66/CEE for Newcastle disease





Newcastle disease outbreak in a backyard farm, 29.01.2015, Romania, Constanta County, Dulcesti locality

- **3 km protection zone**; three localities : Dulcesti (1062 hens and turkeys), 23 August (1650 hens and turkeys), and Mosneni (1100 hen and turkeys).
- **10 km surveillance zone**, 11 localities (6 are turistical localities, without backyard holdings and flocks), total effective of 7560 heads (hens and turkeys).
- The remained live poultry in the infected backyard were culled and incinerated;
- Inspection in all backyards in the protection zone; no other cases found.
- No commercial farms in the restriction zones



Newcastle disease outbreak, 29.01.2014, Romania, Constanta
County, Dulcesti locality

- 3 disinfection performed in the infected backyard: on 03.02.2015; on 17.02.2015; on 24.02.2015.
- Closure of outbreak and lifting the restriction is approximated on 24.03.2015
- Epidemiology: **Source of the virus** - unknown, but could be maintained in wild birds, having regard the previous case of NDV in Ialomita County

Thank you very much for your attention!

