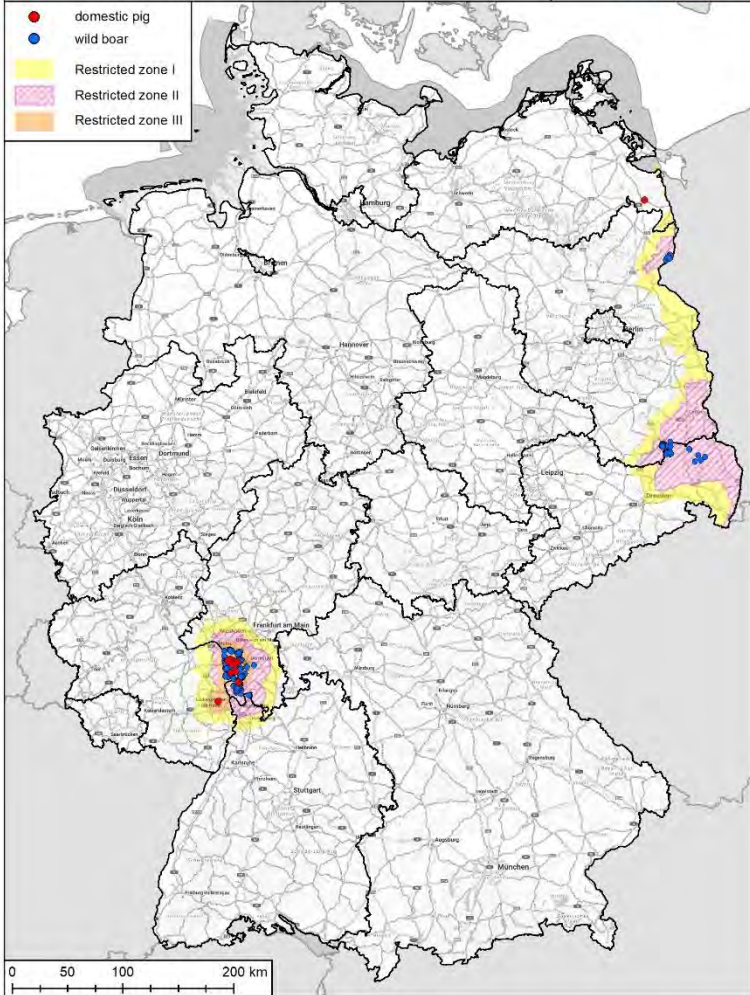




African Swine Fever in DEU

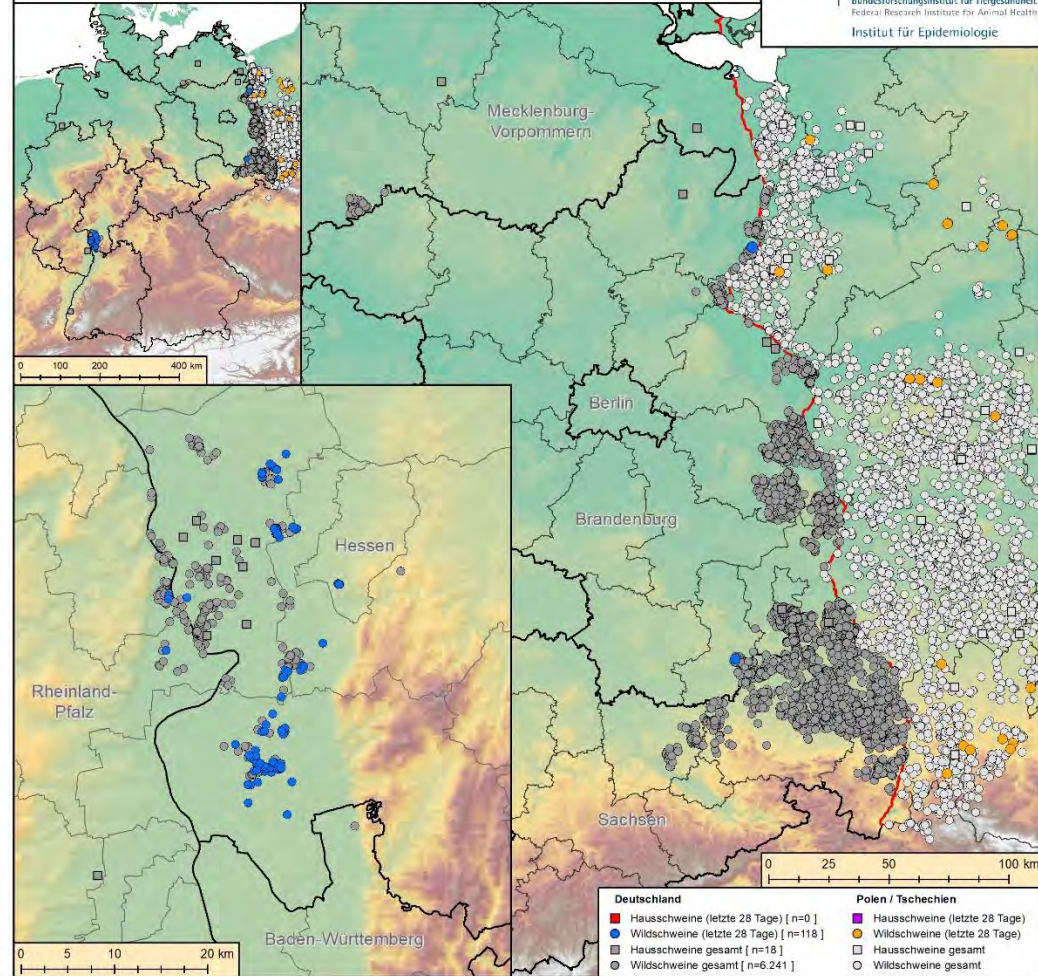
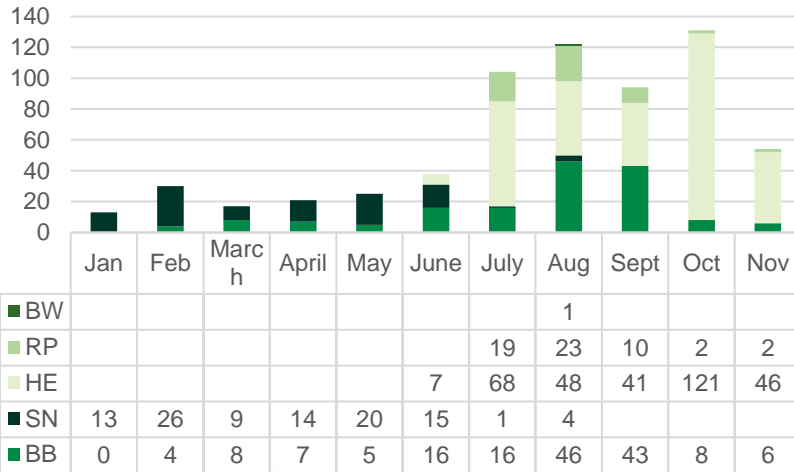
SCoPAFF November 2024



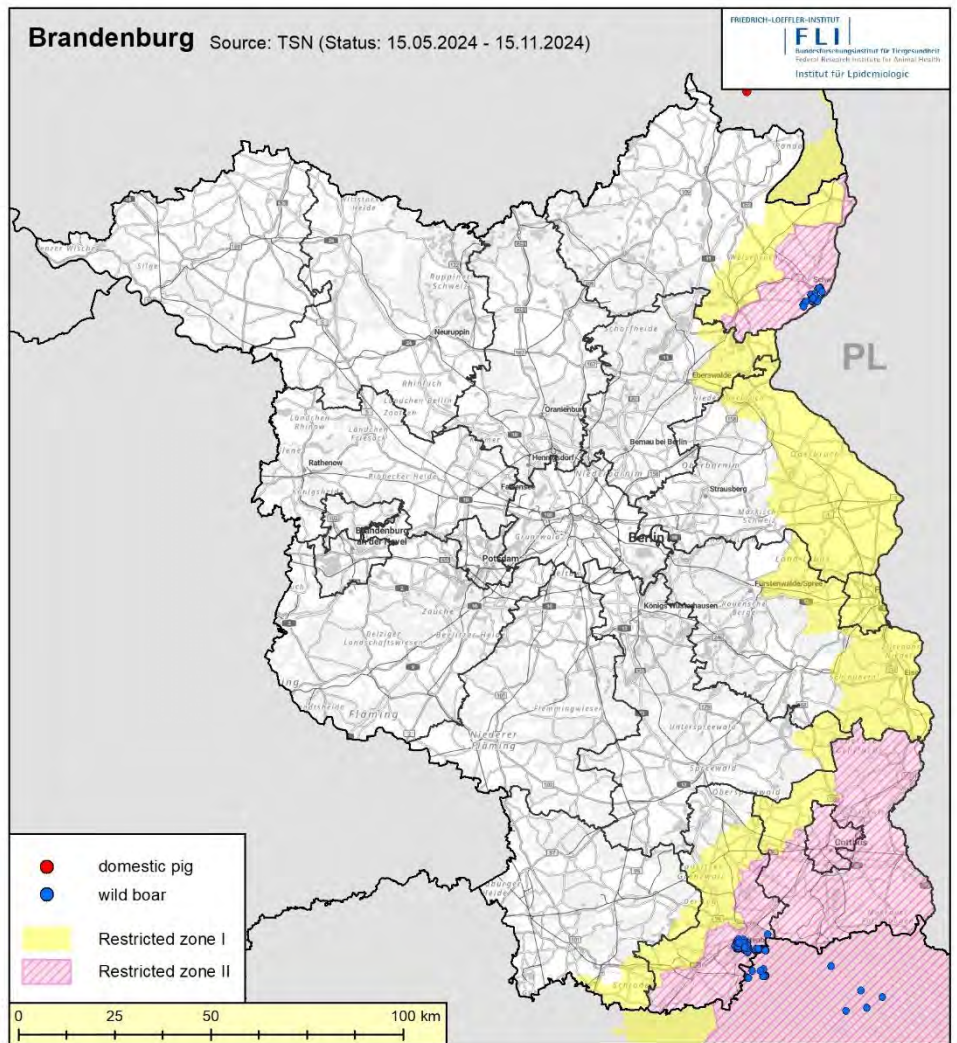
ASF in DEU – overview

ASF in wild boar in DEU in 2024

648 cases on November 15th

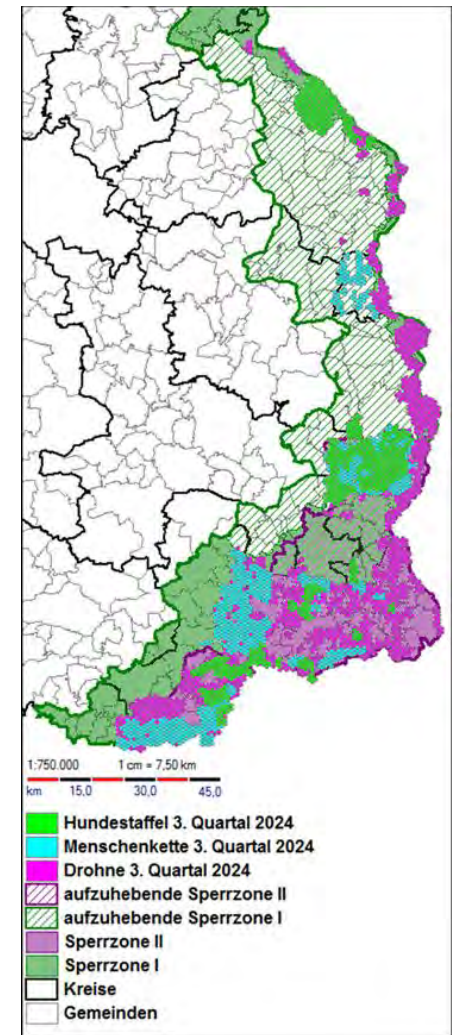
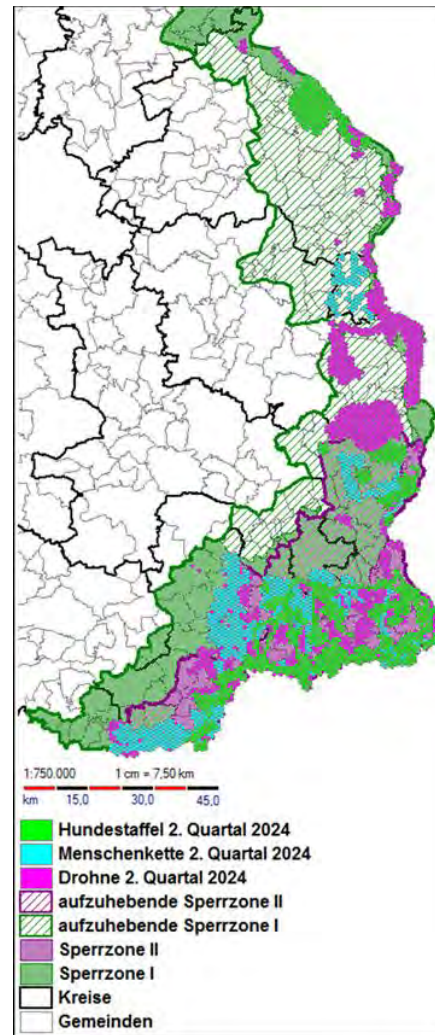


ASF in Brandenburg (BB)

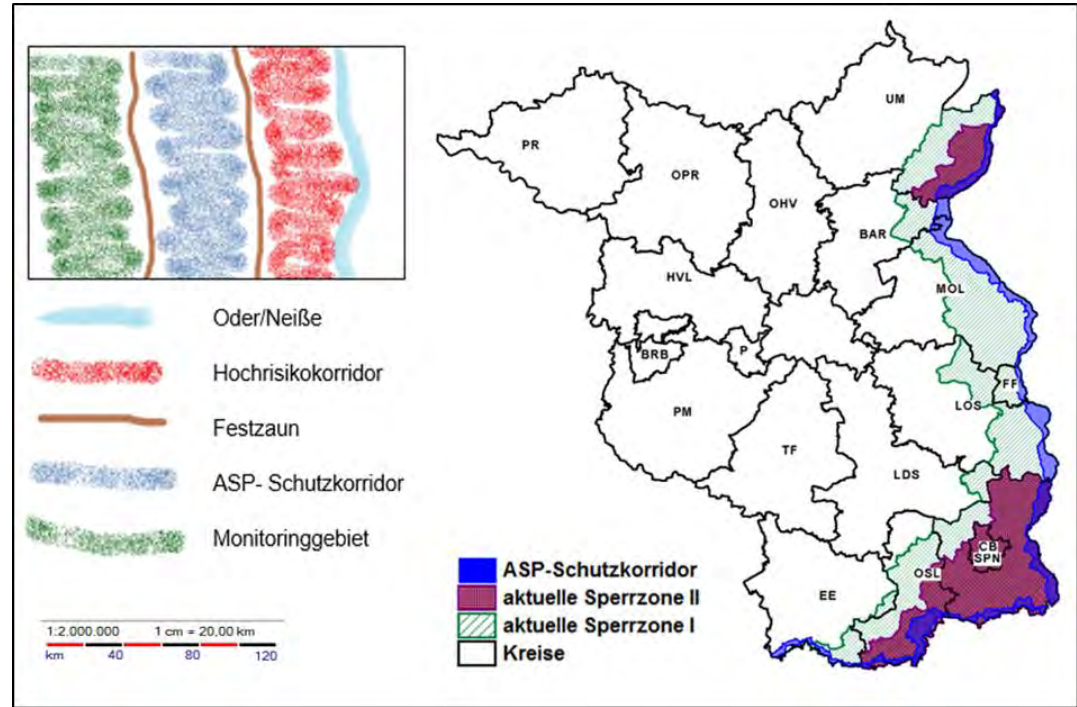
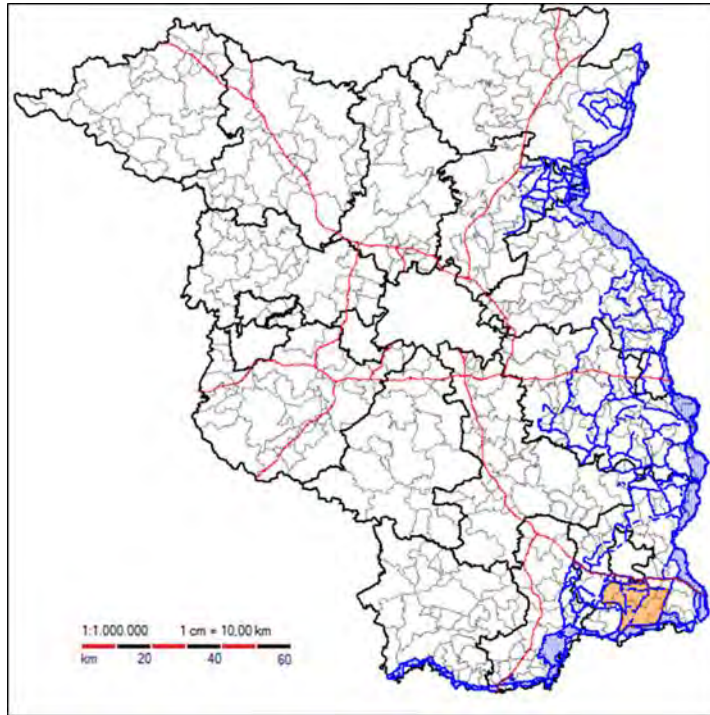


ASF measures in BB

Search for carcasses and fencing



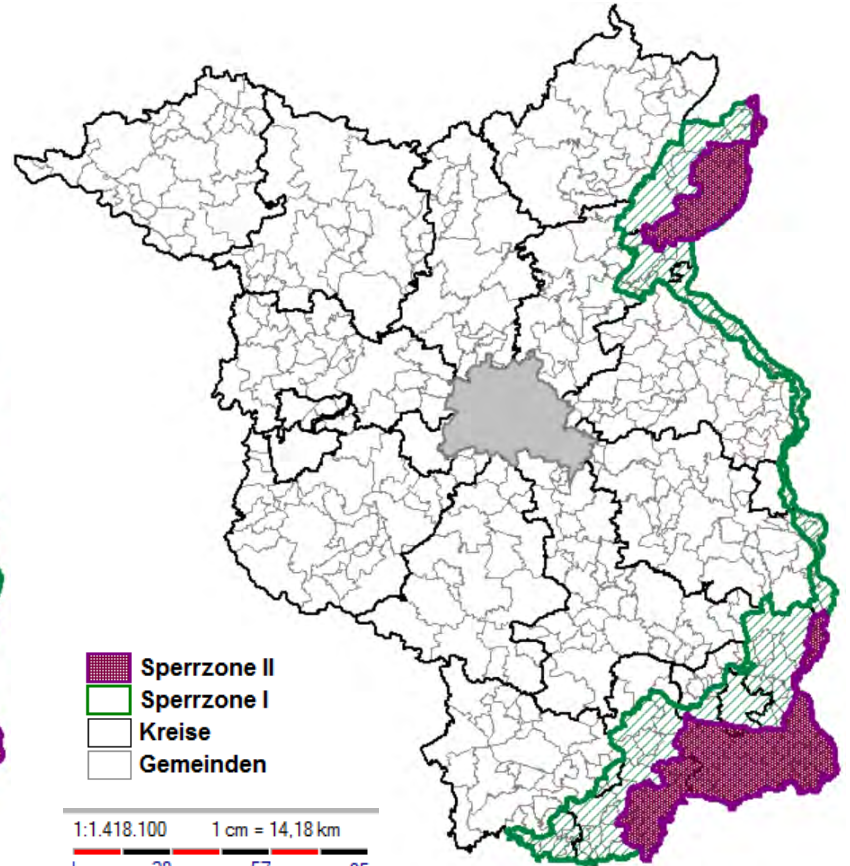
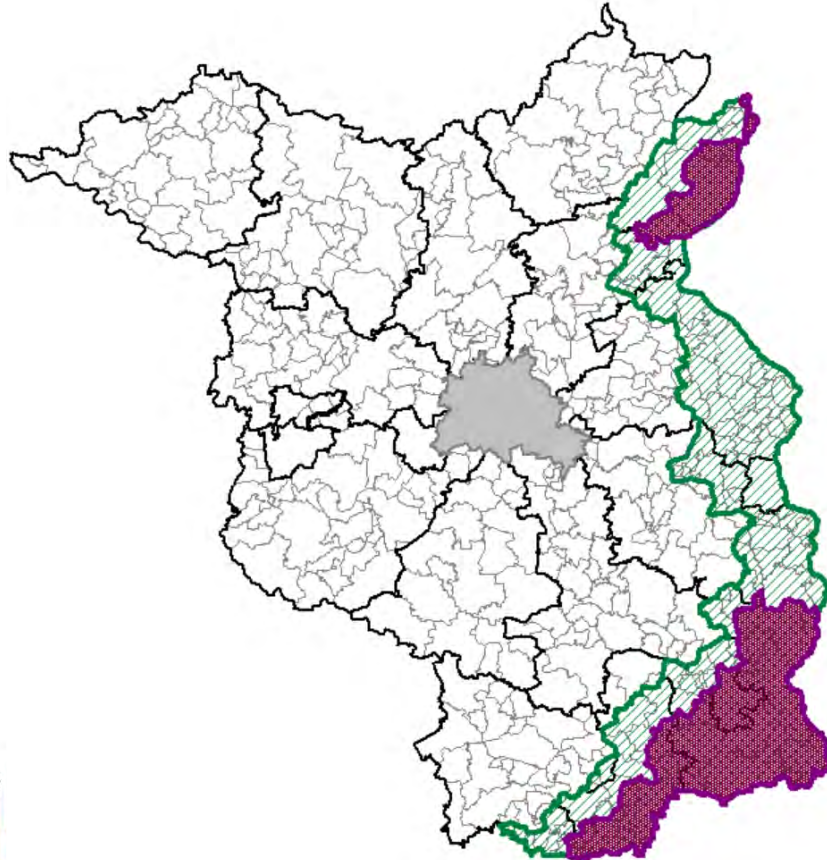
ASF measures in BB – fencing and ASF-protection-corridors



Sperrzonen im Land Brandenburg

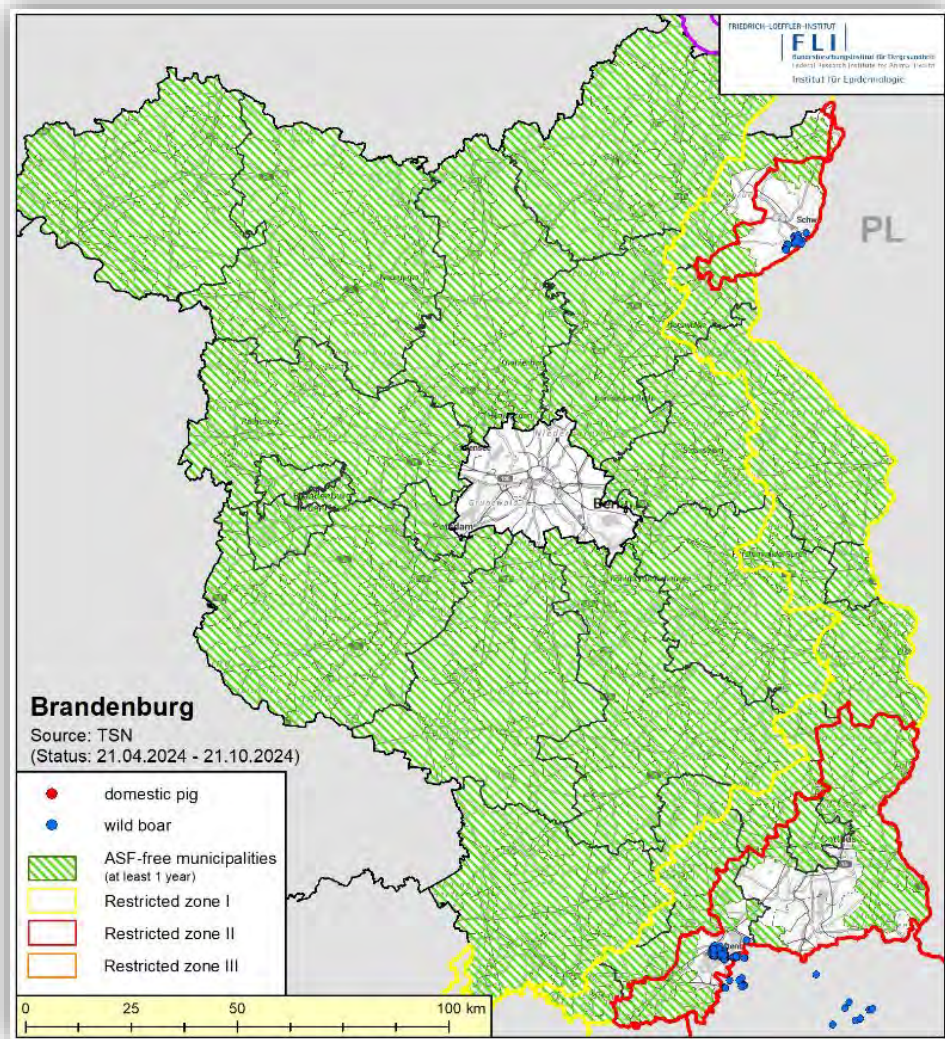
vor Anpassung

nach Anpassung

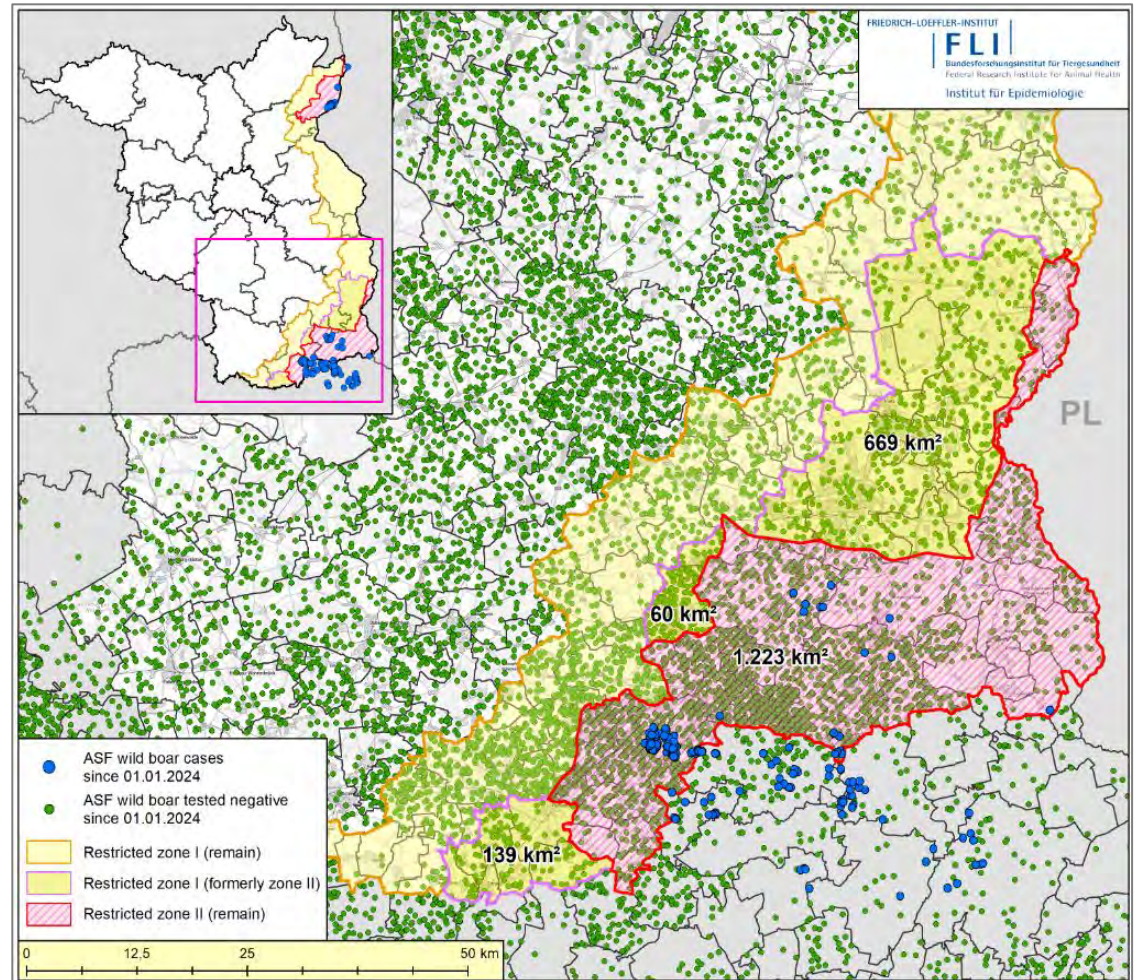


ASF surveillance in BB

→ districts and municipalities with no ASF cases ever or for at least 12 months



ASF surveillance in RZ II and RZ I in the south of BB



ASF surveillance in RZ II and RZ I in the south of BB

→ last two positive cases in January 2023: bones lying time 4 weeks/2-3 months

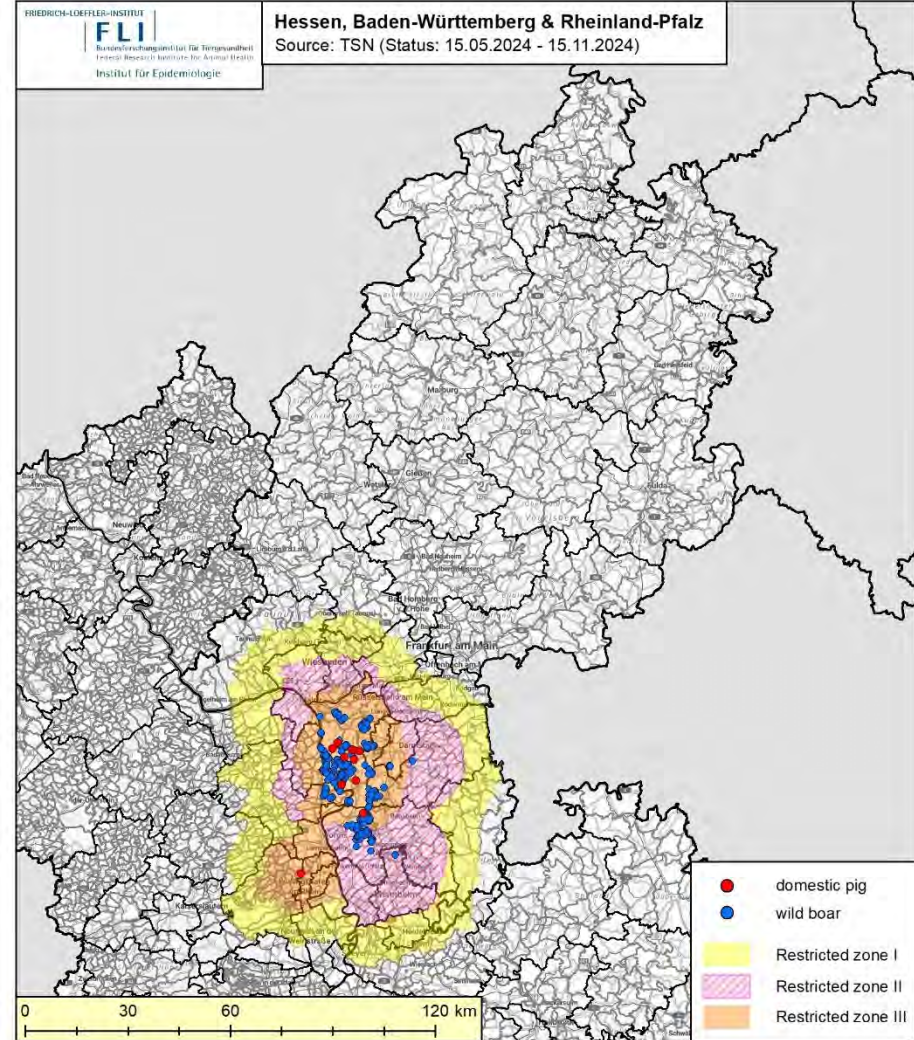
Jahr	Gebiet Spree-Neiße / Cottbus (669 km ²)		Oberspreewald-Lausitz (Gebiet Nord - 60 km ²)		Oberspreewald-Lausitz (Gebiet Süd - 139 km ²)	
	RZ I (formerly II) neg	RZ I (formerly II) pos	RZ I (formerly II) neg	RZ I (formerly II) pos	RZ I (formerly II) neg	RZ I (formerly II) pos
2016	60	0	2	0	2	0
2017	111	0	9	0	5	0
2018	91	0	4	0	23	0
2019	137	0	6	0	70	0
2020	489	28	145	0	101	0
2021	1.520	64	283	0	200	0
2022	1.242	30	269	0	245	0
2023	1.056	2	324	0	234	0
2024	522	0	149	0	132	0
Gesamt	5.228	124	1.191	0	1.012	0

ASF – Exit Strategy of EFSA in the south of BB

→ 20 months with „screening phase“ (12 months) and „confirmation phase“ (8 months)

Gebiet	Spree-Neiße / Cottbus (669 km ²)		Oberspreewald-Lausitz (Gebiet Nord - 60 km ²)		Oberspreewald-Lausitz (Gebiet Süd - 139 km ²)	
	RZ I (formerly II) neg	RZ I (formerly II) pos	RZ I (formerly II) neg	RZ I (formerly II) pos	RZ I (formerly II) neg	RZ I (formerly II) pos
01.02.2023 - 31.01.2024 (Screening)	1.027	0	313	0	234	0
01.02.2024 - 24.10.2024 (Confirmation)	469	0	136	0	118	0
Gesamt	1.486	0	449	0	352	0

ASF
in Hesse (HE) ,
Rhineland-Palatinate (RP)
and
Baden-Wuerttemberg (BW)



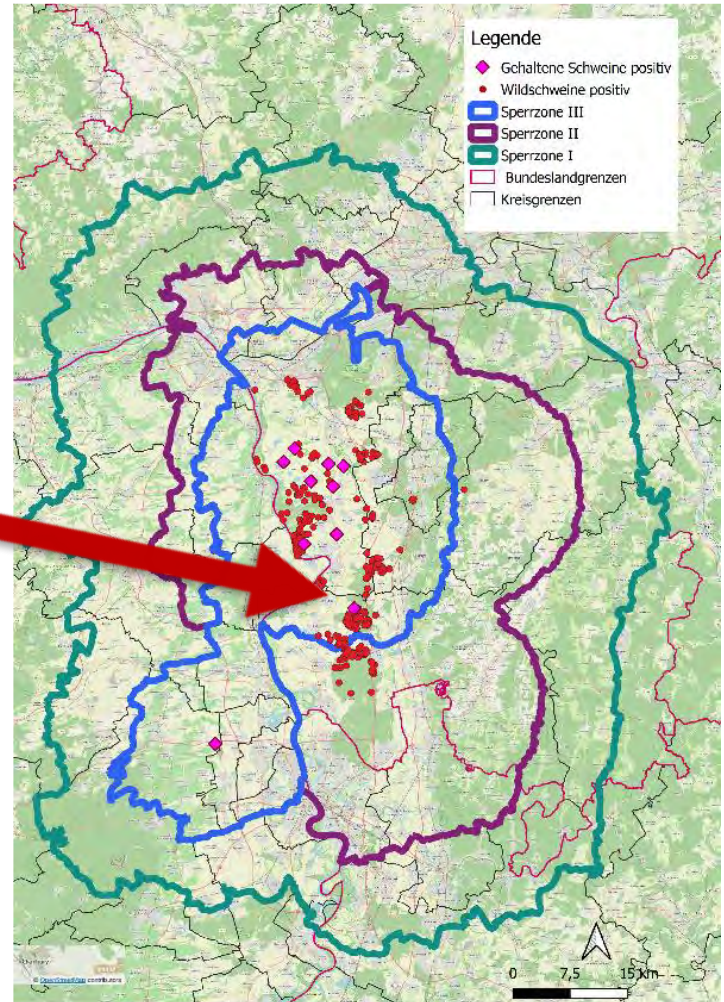
ASF in HE

– new outbreak in kept wild boar

Game reserve for cultural and educational purposes

(ADIS DE-ASF-2024-00645 on Nov. 13th)

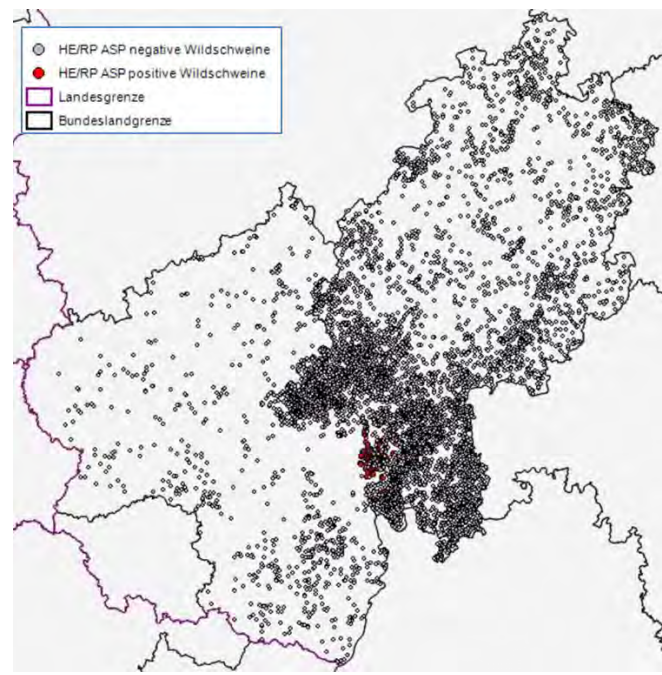
- regular checks by competent authority
- killing of all 19 animals on day of suspicion after death of 5
- high amount of virus
- introduction via illegal feed most likely
- good biosecurity (triple fences, no visitors close to animals since July)



ASF in HE + RP

Surveillance in wild boar

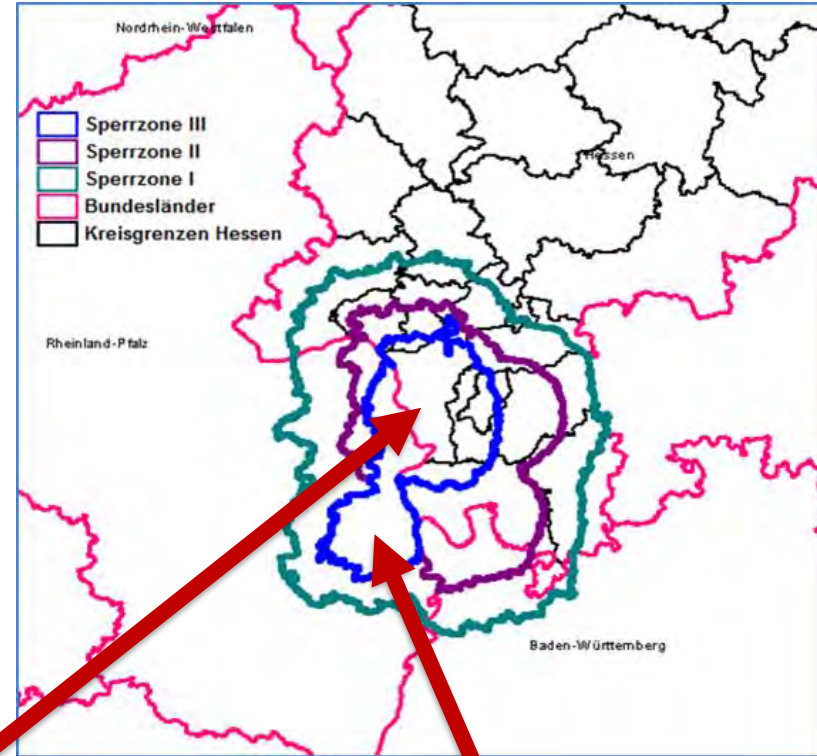
(showing all of HE+RP)



	01.01.-12.06.2024		13.06.-28.10.2024			
	freies Gebiet		freies Gebiet		Sperrzonen I, II und III	
	negativ	positiv	negativ	positiv	negativ	positiv
Hessen						
erlegte WS	1.139	0	3.382	0	1.237	0
Indikatortiere	115	0	409	0	866	284
Rheinland-Pfalz						
erlegte Tiere	104	0	301	0	198	0
Indikatortiere	73	0	278	0	27	52
Gesamt	1.431	0	4.370	0	2.328	336

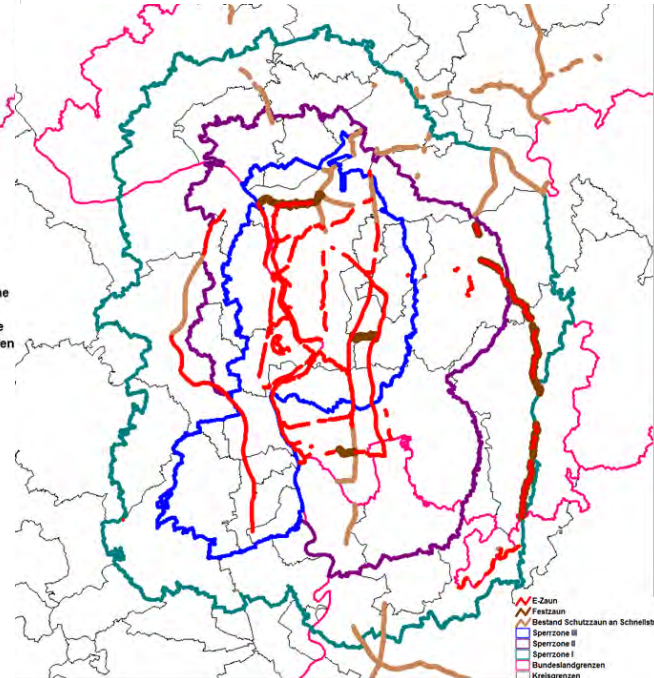
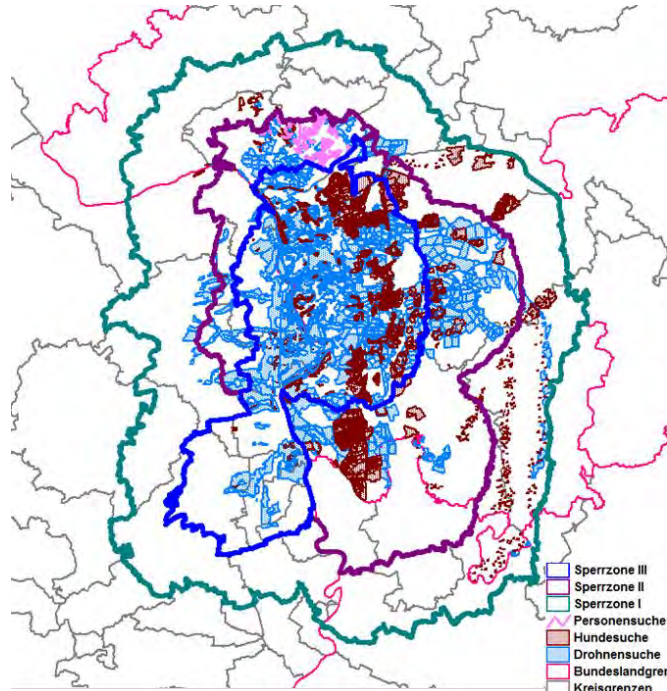
ASF RZ III due to outbreaks in pig establishments in HE + RP

ADIS	Notification	Municipality	No of animals
DE ASF 2024-179	18.7.2024	Stockstadt, HE	1129
DE ASF 2024-197	23.7.2024	Groß Gerau, HE	16
DE ASF 2024-198	23.7.2024	Riedstadt, HE	168
DE ASF 2024-203	24.7.2024	Riedstadt, HE	27
DE ASF 2024-216	25.7.2024	Groß Gerau, HE	159
DE ASF 2024-223	26.7.2024	Trebur, HE	7
DE ASF 2024-243	31.7.2024	Trebur, HE	2419
DE ASF 2024-333	15.8.2024	Gerolsheim, RP	3



ASF measures

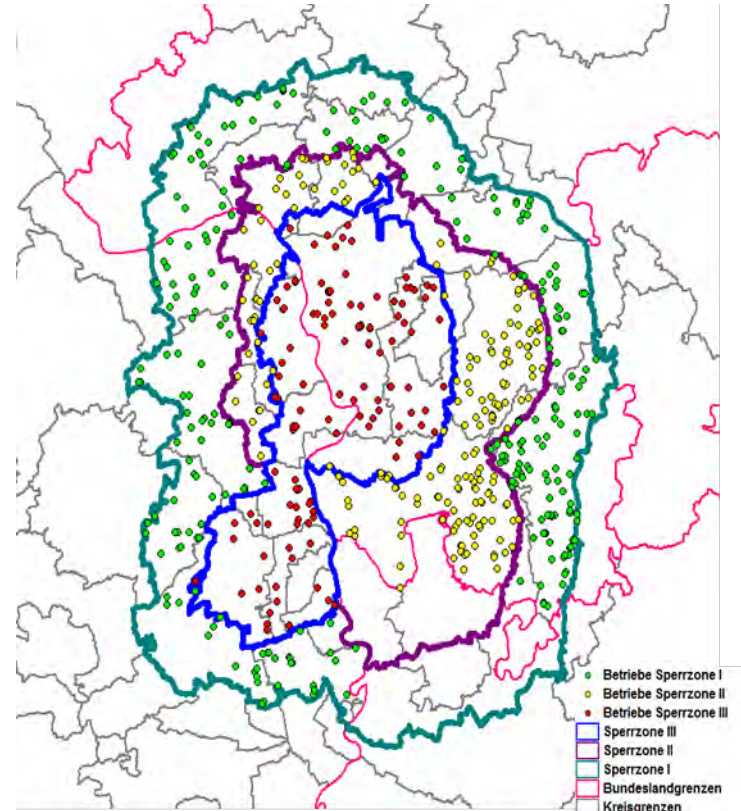
- Movement restrictions
- Check of pig establishments (no pig industry area)
- Active search for carcasses (>200.000 ha)
- Eradication in affected pig establishments
- Epidemiological investigations including FLI closed
- Fencing ongoing (>300 km in HE + 165km in RP)
- **Trapping** started



ASF RZ III due to outbreaks in pig establishments

Pig establishments in RZ III in HE + RP

	Anzahl Schweinehaltende Betriebe		Anzahl Schweine	Anzahl Betriebe ≤ 10 Schweine	Anzahl Betriebe > 10 Schweine	Anzahl Betriebe Freilandhaltung
	Anzahl	davon leer				
SZ III HE	77	28	3.066	61	16	1 (4 Schweine)
SZ III RP	29	0	294	26	3	14
SZ III gesamt	106	28	3.360	87	19	15



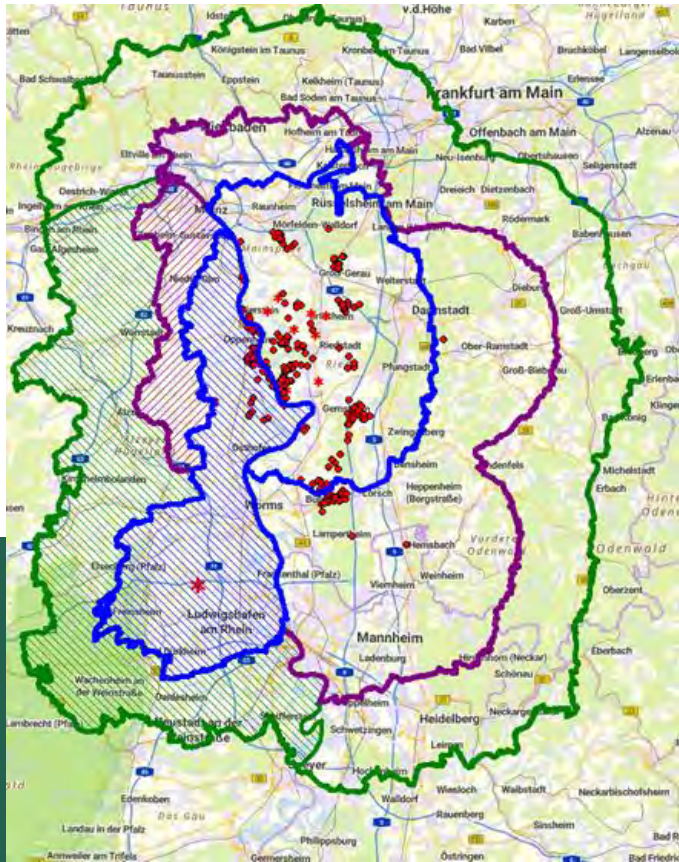
ASF RZ III due to outbreaks in pig establishments

Controls and laboratory tests in pig establishments within RZ III in HE + RP

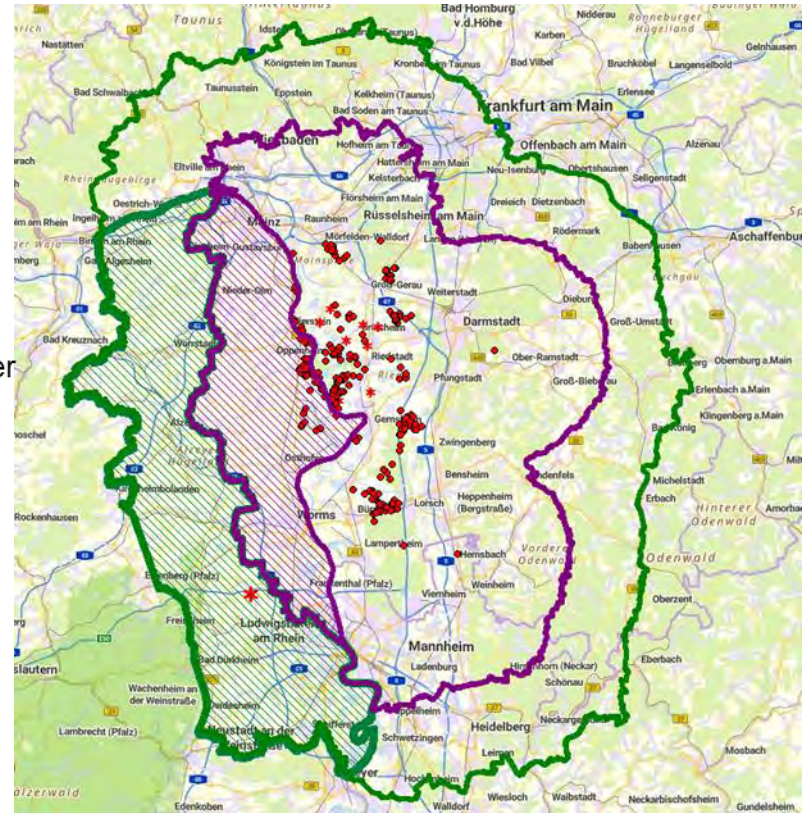
	Anzahl schweinehaltende Betriebe		Anzahl durchgeführter Kontrollen	Anzahl kontrollierter Betriebe
	Anzahl	davon am 10.10.2024 leer		
SZ III HE	77	28	92	51
SZ III RP	29	0	50	29
SZ III gesamt	106	28	117	80

		01.01.-12.06.2024		13.06.-28.10.2024	
		negativ	positiv	negativ	positiv
ASP-PCR	Hessen	50	0	1.639	49*
	Rheinland-Pfalz	19	0	319	3*
	gesamt	69	0	1.958	52*
ASP-ELISA	Hessen	136	0	233	0
	Rheinland-Pfalz	6	0	281	0
	gesamt	142	0	514	0




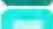
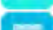



ASF RZ III change into RZ II in HE and in RZ II and I in RP

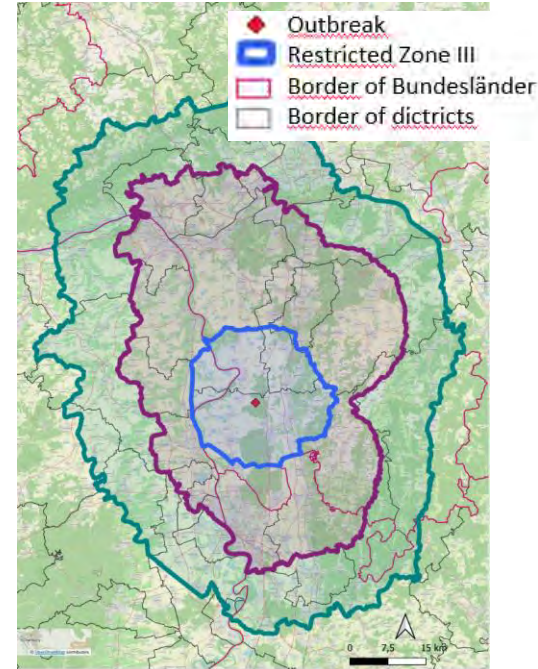
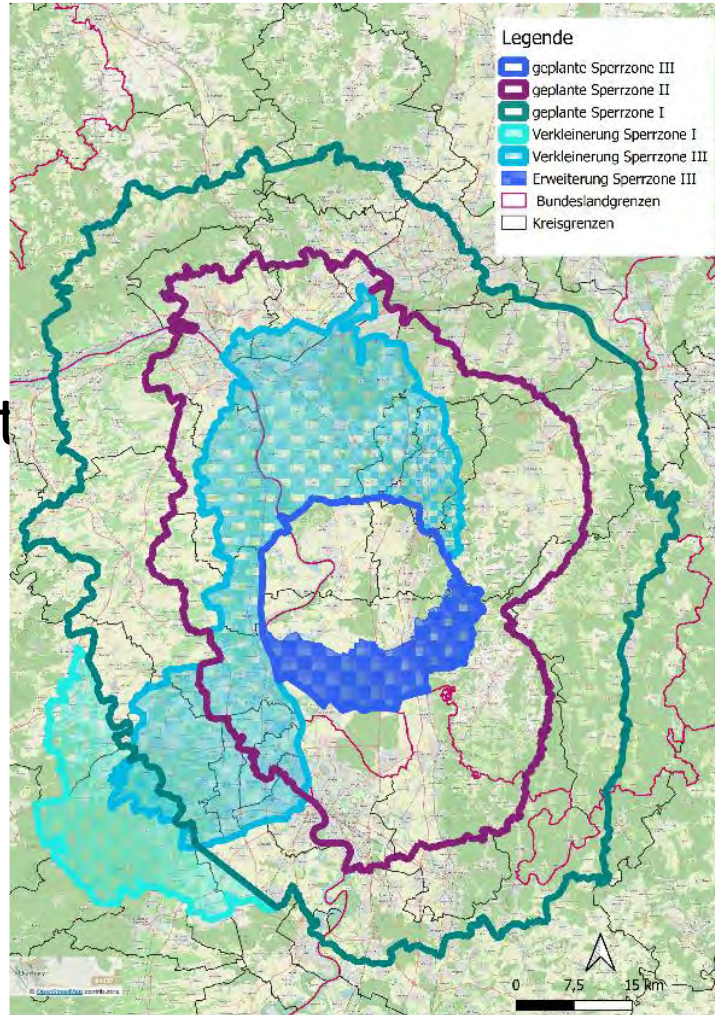


- Restricted zone III
- Restricted zone II
- Restricted zone I
- Border of Bundesländer
- Border of districts



ASF RZ III amendments including enlargement in the southern part in HE

-  Foreseen Restricted Zone III
-  Foreseen Restricted Zone II
-  Foreseen Restricted Zone I
-  Diminishing Restricted Zone I
-  Diminishing Restricted Zone III
-  Enlargement Restricted Zone III
-  Border of Bundesländer
-  Border of dictricts



Conclusions

- Due to high effort and sustainable measures ASF was and still is being gradually diminished in many areas in DEU
- Sustaining limitation to a small affected area after introduction via migrating wild boar in Eastern parts of DEU was achieved for years
- High risk area after new introduction by jump to HE demarkated
- Implementation of White Zones – trapping started
- No further outbreaks in domestic pig establishments in HE since July 31st, 2024 and in RP since August 15th, 2024 for three months
- No ASF in wild boar surrounding ASF single outbreak establishment in RP, epidemiological investigations conclusive
- One single outbreak in kept wild boar in HE with no threat of spreading to domestic pig establishments
- Surveillance and biosecurity in pig establishments / wild boar / hunting are in place
- Awareness campaigns are part of daily work

Thanks to the colleagues of:

- Friedrich-Loeffler-Institute
- Ministry of Brandenburg
- Ministry of Hesse
- Ministry of Rhineland Palatinate



Federal Ministry of Food and Agriculture
Directorate 3
Unit 323 – Animal Diseases -
EU-Trade, International Affairs, Crisis Centre
Rochusstr. 1
53123 Bonn

Dr. Christina Haarmann
323@bmel.bund.de
www.bmel.de
Tel. +49 30 12 345-3922