

Avian influenza

AHW.A.06

Epidemiological situation in Poland



General Veterinary Inspectorate
21 May 2025

Epidemiological situation in 2025 (poultry, captive birds and wild birds)



Legend:

- Ongoing outbreaks in poultry
- Resolved outbreaks in poultry
- Outbreaks in wild birds
- Outbreaks in captive birds

Epidemiological situation since 1st January 2025

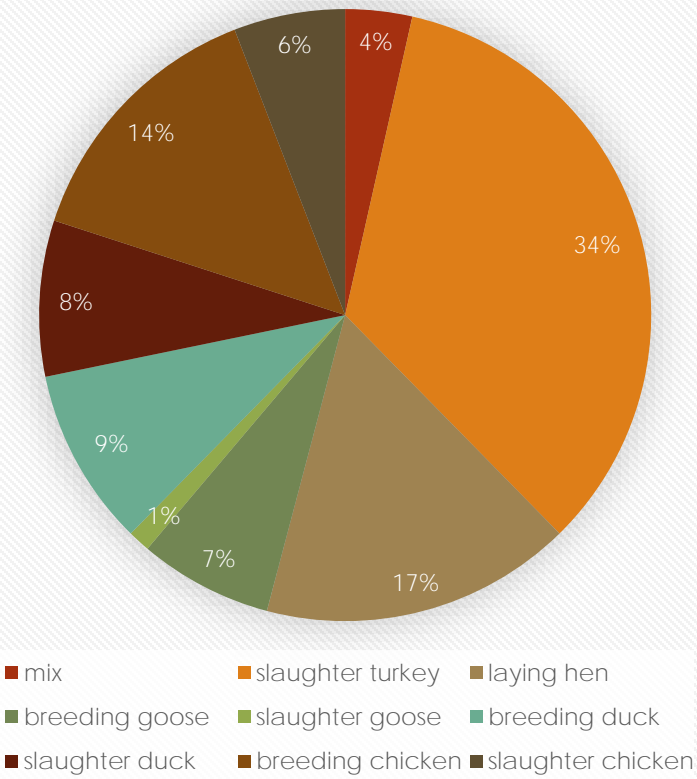
POULTRY

| Voivodeship | Number of outbreaks | Number of birds |
|---------------------|---------------------|-----------------|
| kujawsko-pomorskie | 2 | 7 185 |
| lubuskie | 2 | 14 854 |
| łódzkie | 5 | 68 889 |
| małopolskie | 1 | 30 895 |
| mazowieckie | 21 | 3 042 832 |
| podkarpackie | 1 | 16 041 |
| pomorskie | 1 | 13 321 |
| świętokrzyskie | 1 | 5832 |
| warmińsko-mazurskie | 7 | 156 154 |
| wielkopolskie | 43 | 4 625 785 |
| zachodniopomorskie | 1 | 67 461 |
| Summary | 85 | 8 049 249 |

+1

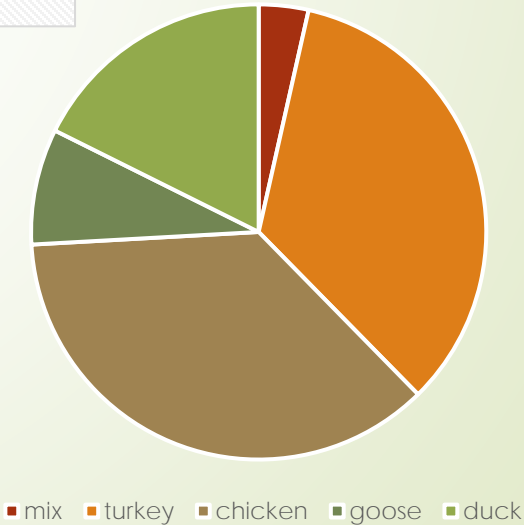
+3

POULTRY SPECIES IN HPAI OUTBREAKS



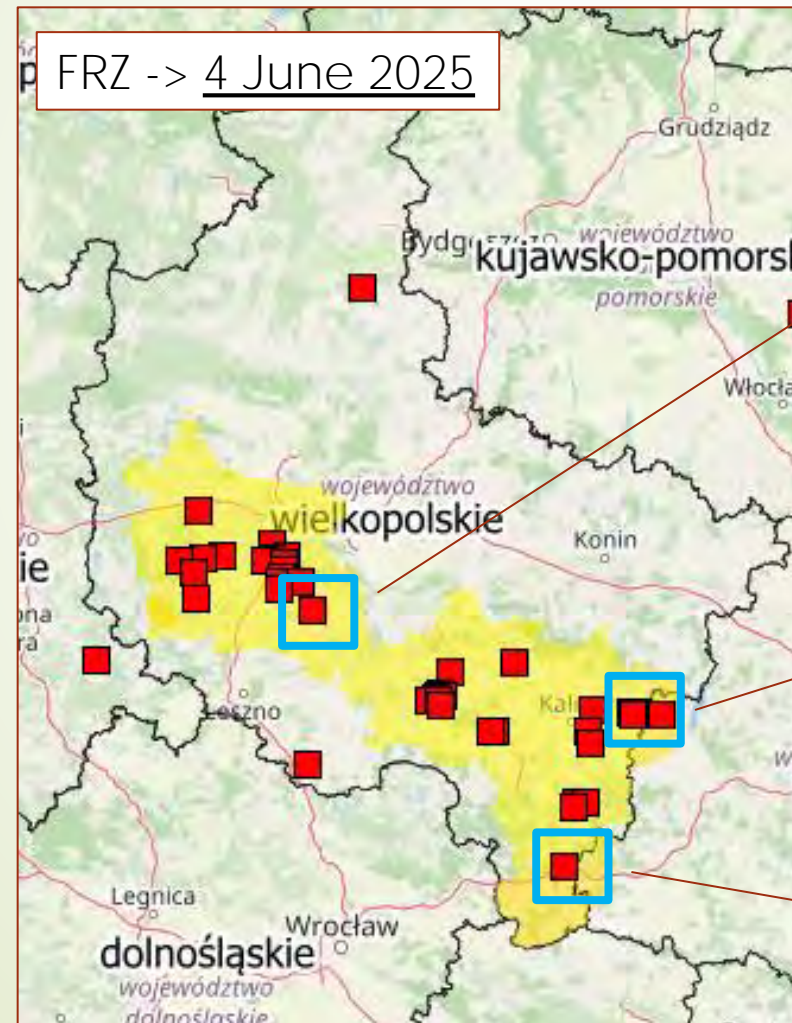
| species | no. of outbreaks |
|---------|------------------|
| mix | 3 |
| turkey | 29 |
| chicken | 31 |
| goose | 7 |
| duck | 15 |

By species



Epidemiological situation in poultry in wielkopolskie region since last PAFF

| | | | |
|-----------------------|----------|--------|--------------------------------------|
| PL-HPAI(P)-2025-00082 | kaliski | 23120 | Chicken broilers |
| PL-HPAI(P)-2025-00084 | śremski | 315581 | Laying hens |
| PL-HPAI(P)-2025-00085 | kępiński | 20523 | Chicken broilers and slaughter goose |



Outbreak no. 84 (śremski district, confirmed on 30 April 2025, 315 581 laying hens)

Outbreak no. 82 (kaliski district, confirmed on 25 April 2025, 23 120 chicken broilers)

Outbreak no. 85 (kępiński district, confirmed on 2 May 2025, 20 523 chicken broilers and slaughter geese)

Epidemiological situation in poultry in pomorskie region



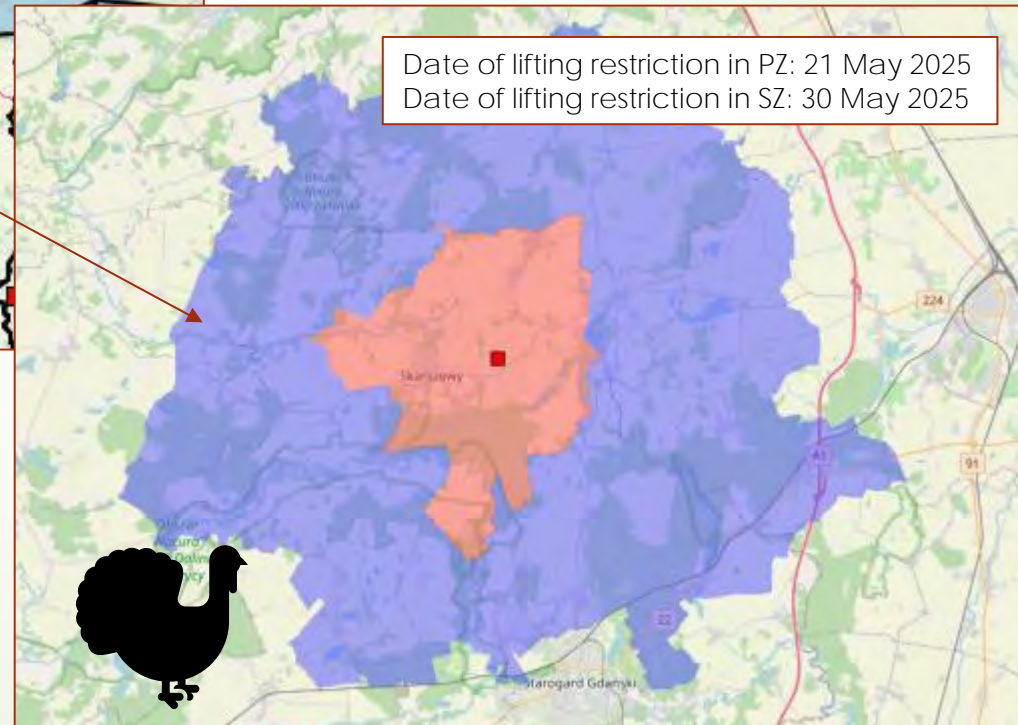
Outbreak no. 83 was confirmed on 28 April 2025 in commercial farm (13 321 slaughter turkeys) located in starogardzki district in pomorskie region

Legend:

Red square – HPAI outbreak in poultry

Pink areas – protection zone

Blue areas – surveillance zone





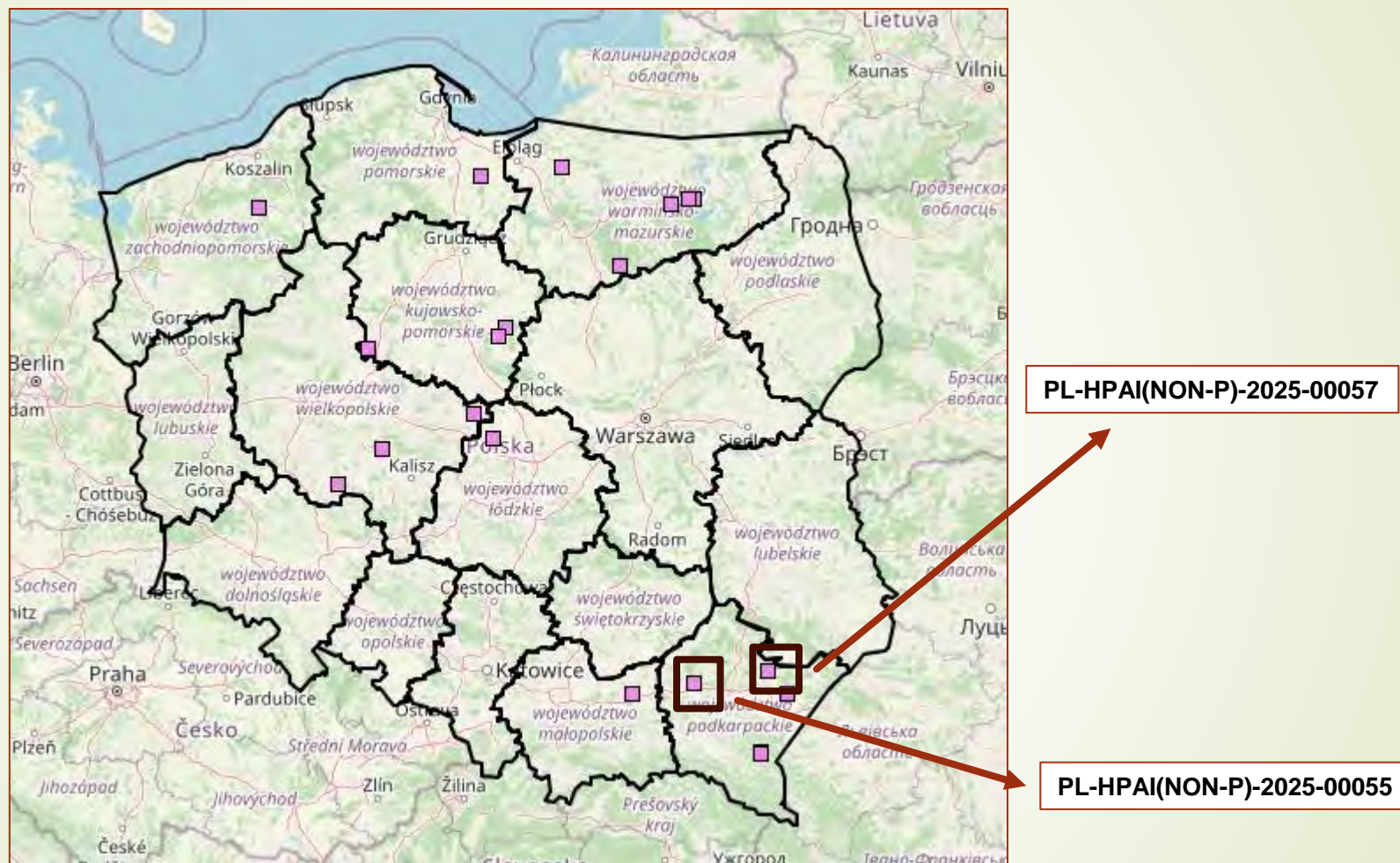
Epidemiological situation since 1st January 2025

CAPTIVE BIRDS

| Voivodeship | Number of birds | Number of outbreaks |
|---------------------|-----------------|---------------------|
| Kujawsko-pomorskie | 114 | 3 |
| Łódzkie | 142 | 1 |
| Małopolskie | 14 | 1 |
| Podkarpackie | 169 | 5 |
| Pomorskie | 47 | 1 |
| Warmińsko-mazurskie | 212 | 5 |
| Wielkopolskie | 130 | 3 |
| Zachodniopomorskie | 18 | 1 |
| In total | 846 | 20 |

+2

Epidemiological situation in captive birds (since last PAFF)



Outbreak no. PL-HPAI(NON-P)-2025-00055 was confirmed on 29 April 2025 in non-commercial farm (24 birds) in ropczycko-sędziszowski district in podkarpackie region

Outbreak no. PL-HPAI(NON-P)-2025-00057 was confirmed on 30 April 2025 in non-commercial farm (23 birds) in leżajski district in podkarpackie region



Epidemiological situation since 1st January 2025

WILD BIRDS

| Voivodeship | Number of outbreaks | Number of birds |
|----------------------------|---------------------|-----------------|
| dolnośląskie | 5 | 6 |
| kujawsko-pomorskie | 1 | 2 |
| lubelskie | 2 | 4 |
| łódzkie | 1 | 1 |
| małopolskie | 1 | 2 |
| mazowieckie | 4 | 6 |
| opolskie | 6 | 16 |
| podkarpackie | 1 | 3 |
| śląskie | 3 | 5 |
| warmińsko-mazurskie | 2 | 2 |
| wielkopolskie | 8 | 45 |
| zachodniopomorskie | 3 | 5 |
| In total | 37 | 98 |

+1

+1

Outbreaks in wild birds in 2025

(outbreaks occurrence from the last meeting are marked in rectangles)



Thank you