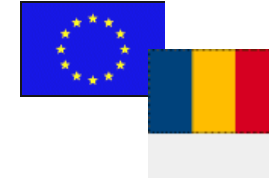




**National Sanitary Veterinary and Food
Safety Authority**



**Implementation in Romania of
the 2013 co-financed programme
for Classical Swine Fever control
and monitoring**

***10-11 Septembrie 2014,
Brussels***

Content

- ❑ **Description**
- ❑ **General Objectives**
- ❑ **Evolution 2013**
- ❑ **Synthesis**
- ❑ **Conclusion**

General Objectives (1)

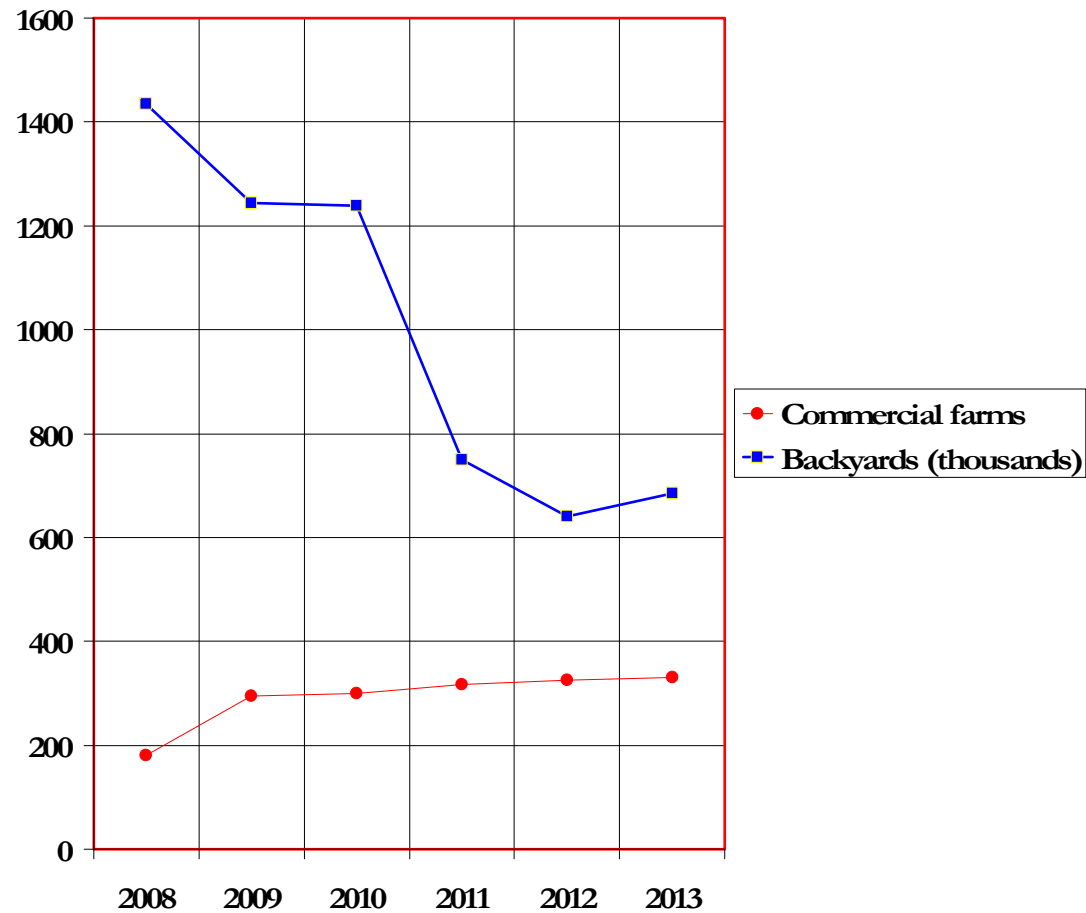
- conformity with EU legislation for control and eradication of CSF
- surveillance of the health status of domestic and wild pig population
- demonstrate the absence of the CSF virus circulation
- demonstrate freedom of CSF
- proper recording of epidemiological data, implementation of the monitoring and control measures and proper recording of the financial aspects of the program

Implementation of the programme

- Target population – entire domestic and wild pig population of the country
- Active and passive surveillance
- Methods - clinical, serology and virology surveillance

Pig population dynamic and distribution (1)

Dynamic of the pig holdings 2008-2013

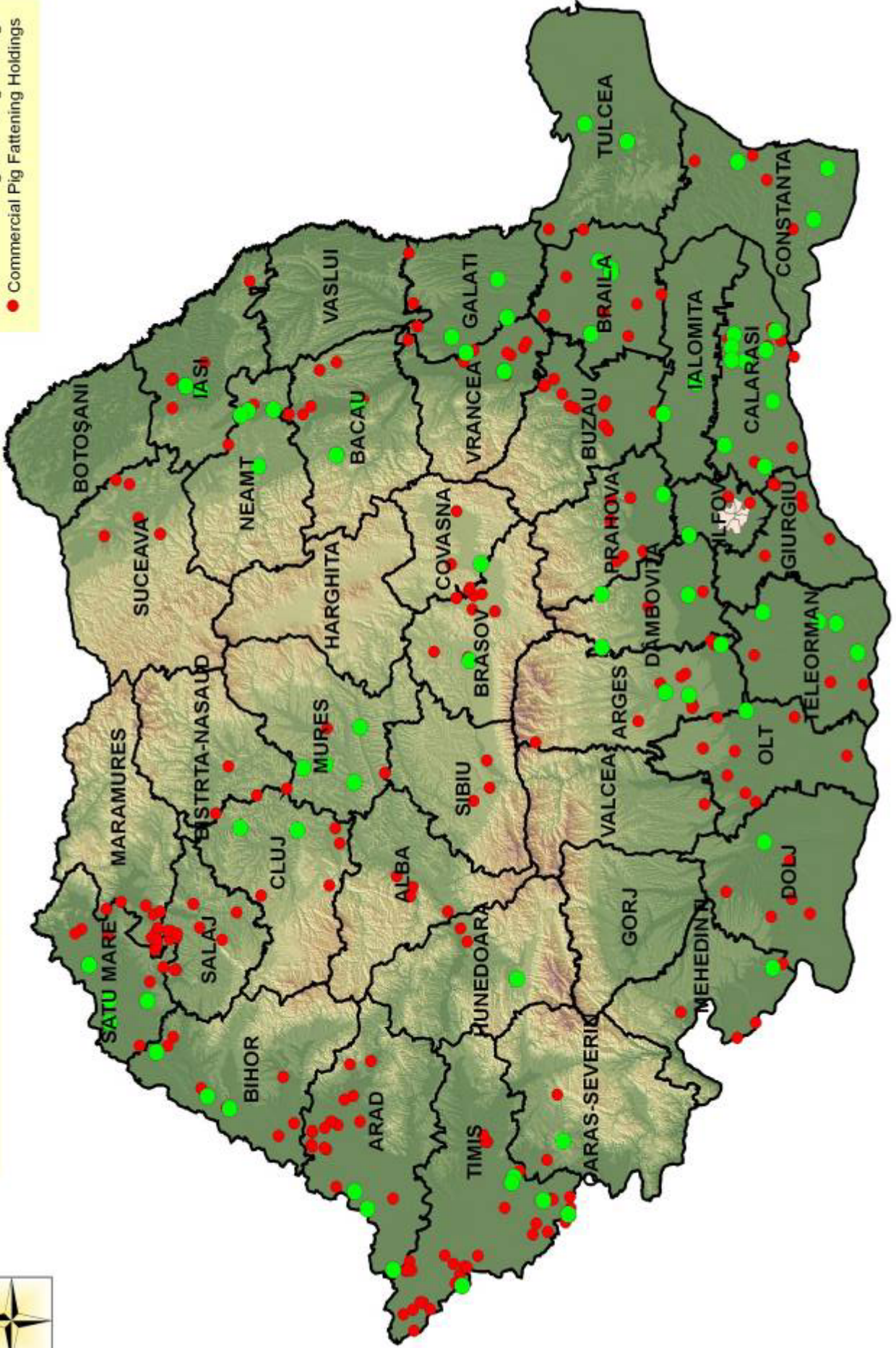




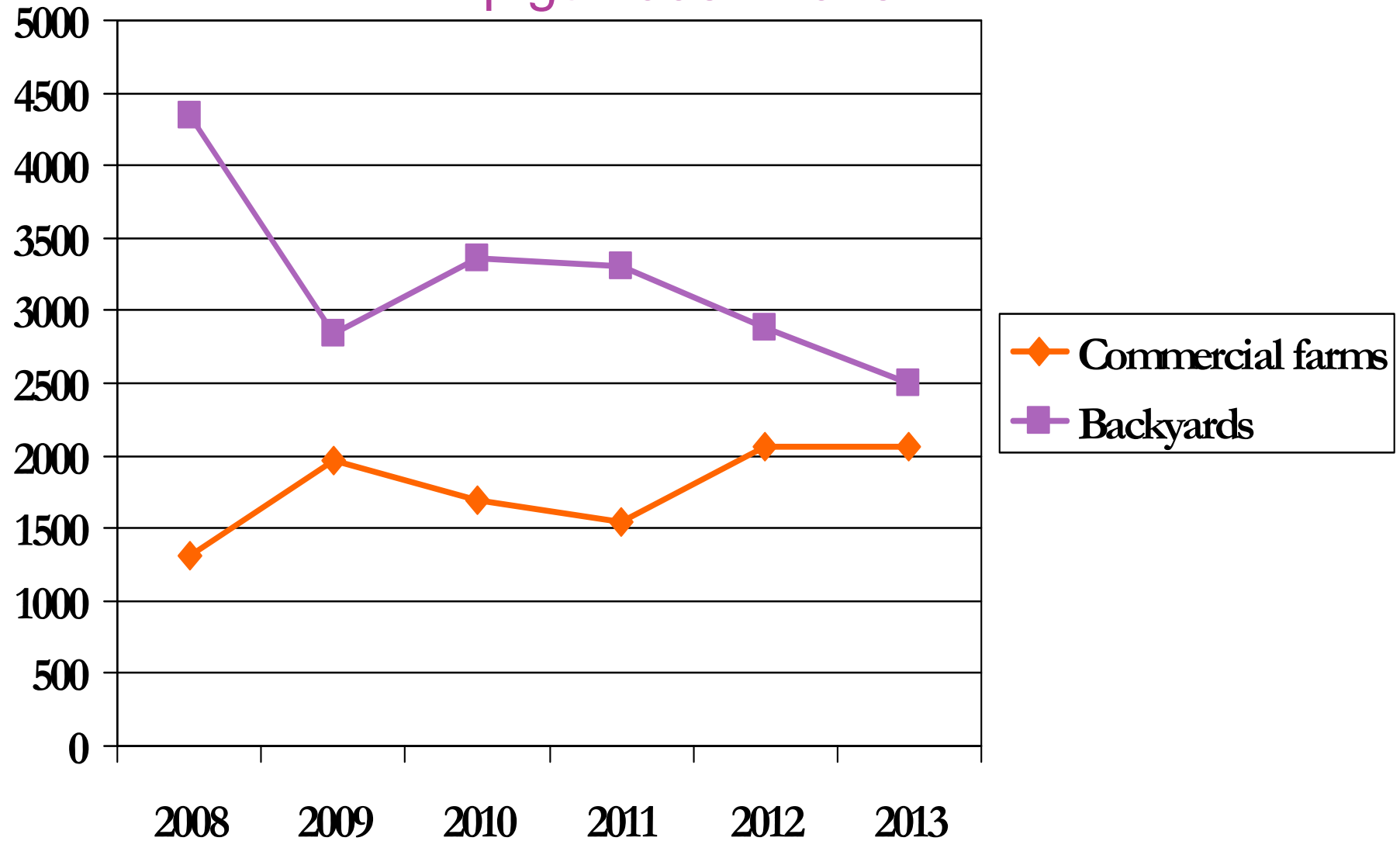
Commercial Pig Holdings from Romania 2013

Legend

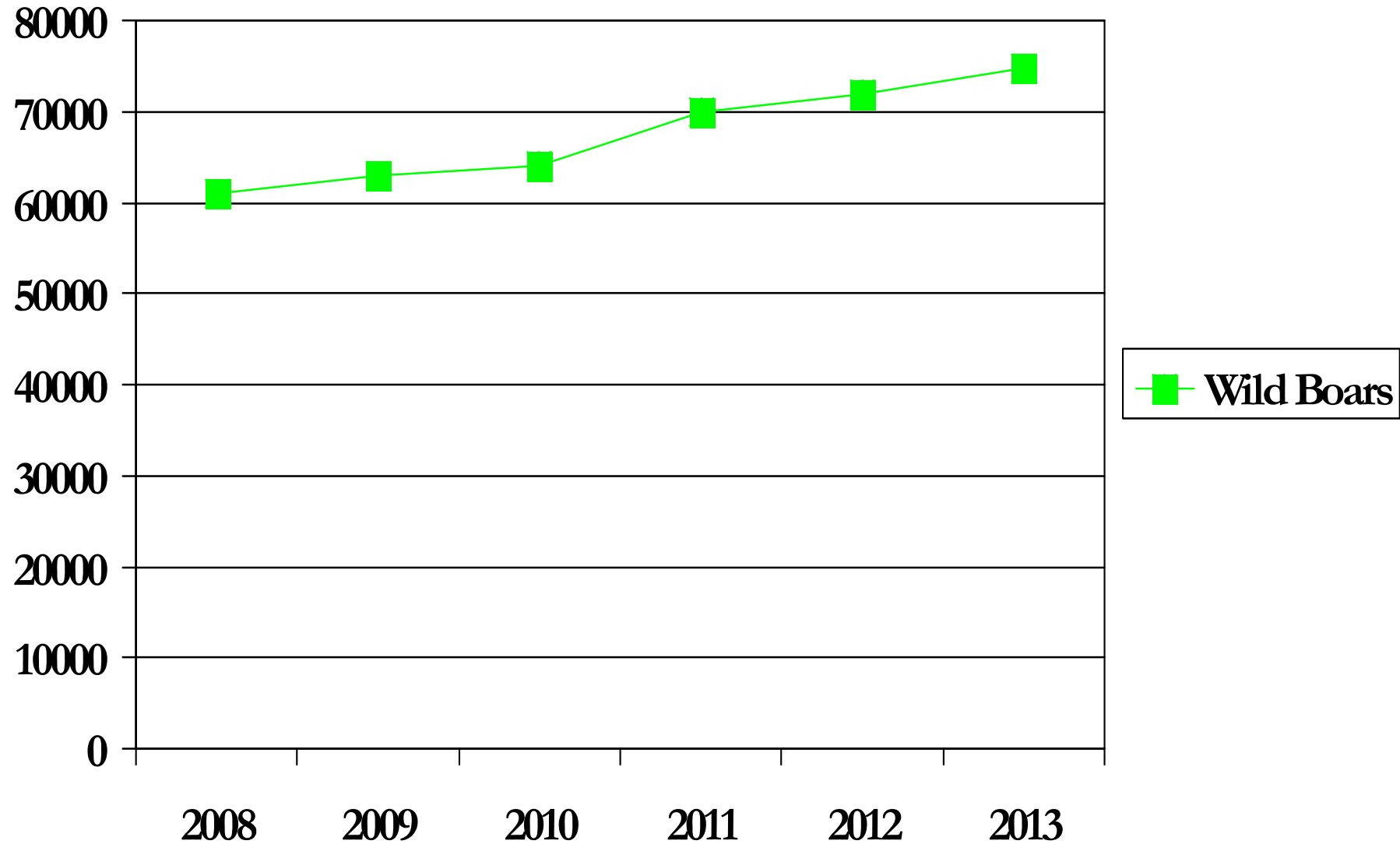
- Commercial Pigs Breeding Holdings
- Commercial Pig Fattening Holdings



Pig population dynamic and distribution (2) Evolution of the number (thousands) of domestic pigs 2008 - 2013



Evolution of Wild Boars population 2008-2013



- The surveillance program for domestic pigs from backyards holdings was design to demonstrate the hypothesis that the virus is present and still circulates in pig populations and as a consequence to be able to detect it at a prevalence of 5% with 95% confidence (as is mentioned in Decision 106/2002).

Serological Surveillance in nonprofessional holdings 2013

Active serological surveillance targeted back-yards around 3 km of commercial farms, 3 km belt from the border with Ukraine, Serbia and around Border Passing Point with Moldova ,

- randomly sampling taking in consideration a prevalence of 5% cu 95% confidence
- the prevalence has been applied at 3 levels: locality level (percent of infected localities in country), herd level and animal level.

The samples were taken in a single campaign in March- April, with the exception of the nonprofessional holdings around Commercial farms from Channeled System where samples were collected quarterly.

Passive surveillance

- From all aborted sow
- From ill pigs with clinical signs of CSF

Virological surveillance in backyards holdings 2013

Virological surveillance in backyards using RT-PCR

- On organs from dead pigs with lesion of CSF
- On blood from aborted sow
- On blood from ill pig with clinical sign of CSF
- On avortons

Serological surveillance in commercial farms 2013

Active surveillance

- all boars and sows in slaughterhouse
- randomly sampling of fattening pigs, with a prevalence of 5% and 95% confidence.
- samples were taken two times per year, in March –April and October –November.

Passive surveillance

- From all aborted sow
- From all ill pigs with clinical signs of CSF

Virological surveillance in Commercial Farms 2013

Virological surveillance in commercial farms using RT- PCR

- **On organs from dead pigs with lesion of CSF**
- **On organs from dead pigs when the dead pigs is above technological mortality even there is no lesion of CSF**
- **On blood from aborted sow**
- **On blood from ill pig with clinical sign of CSF**
- **On avortons**

In case of commercial farms included in Channeled System the animals were tested by PCR before sending to the slaughterhouse with a prevalence of 10% and 95% confidence.

Surveillance in wild boars

- serological surveillance using ELISA on all hunted wild boar born after the date of last vaccination campaign
- virological surveillance using RT-PCR and FAT of all hunted and found dead wild boar

Active surveillance

278355 animals tested by ELISA

Year	Commercial March – April Oct - Nov	Backyard March - April	Backyards around Channel System farms (quarters II,III,IV)
2013	78444	170360	29551

Passive surveillance backyards holdings

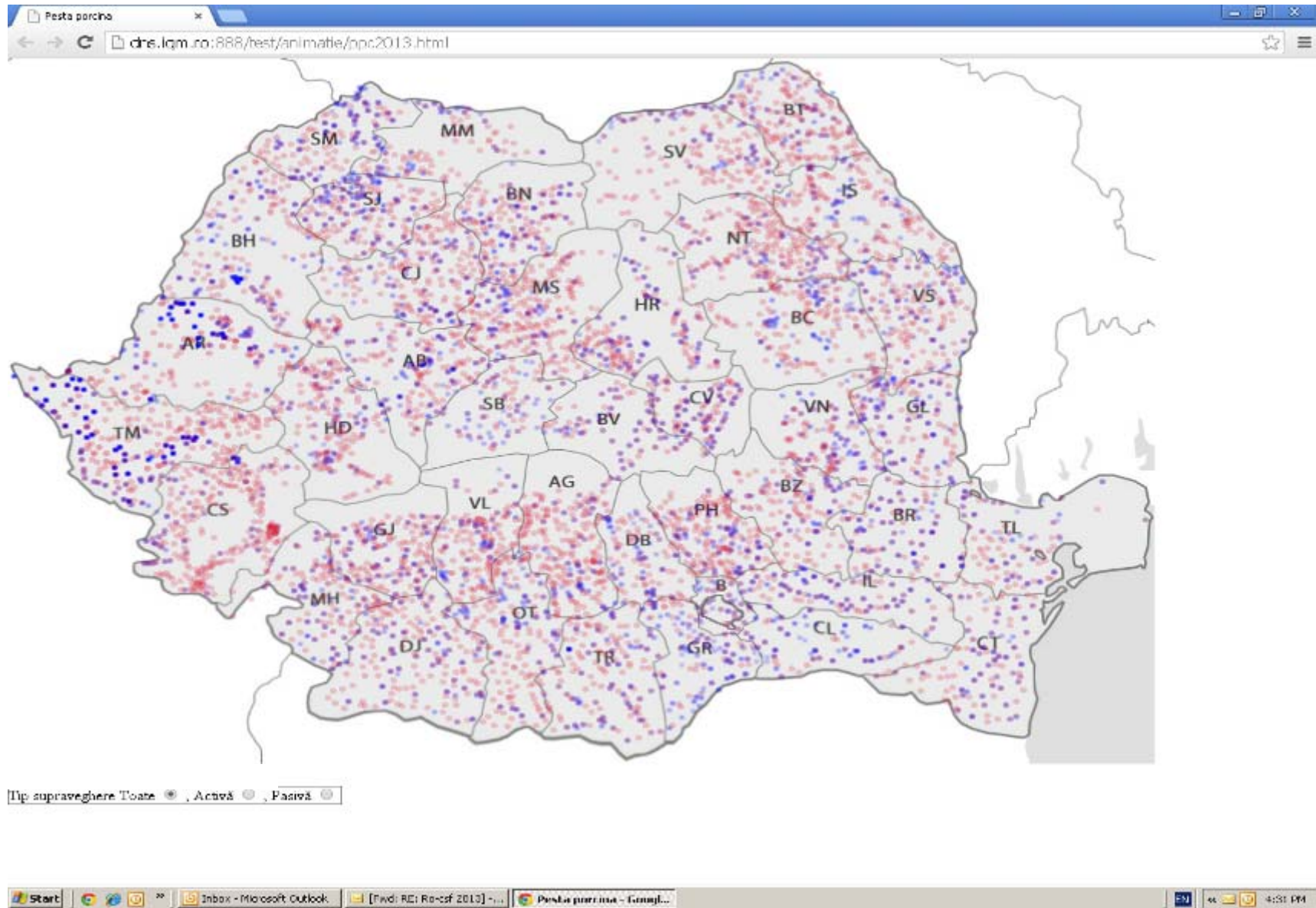
Year	Animals	ELISA	PCR			FAT
		Serum	Blood EDTA	Org	Fetus	Sternum
2013	15226	1408	9596	4521	77	333

1725 PCR tests in 2013 for **active** surveillance on pigs slaughter for own consumption in nonprofessional holdings around Channel System

Passive surveillance commercial holdings

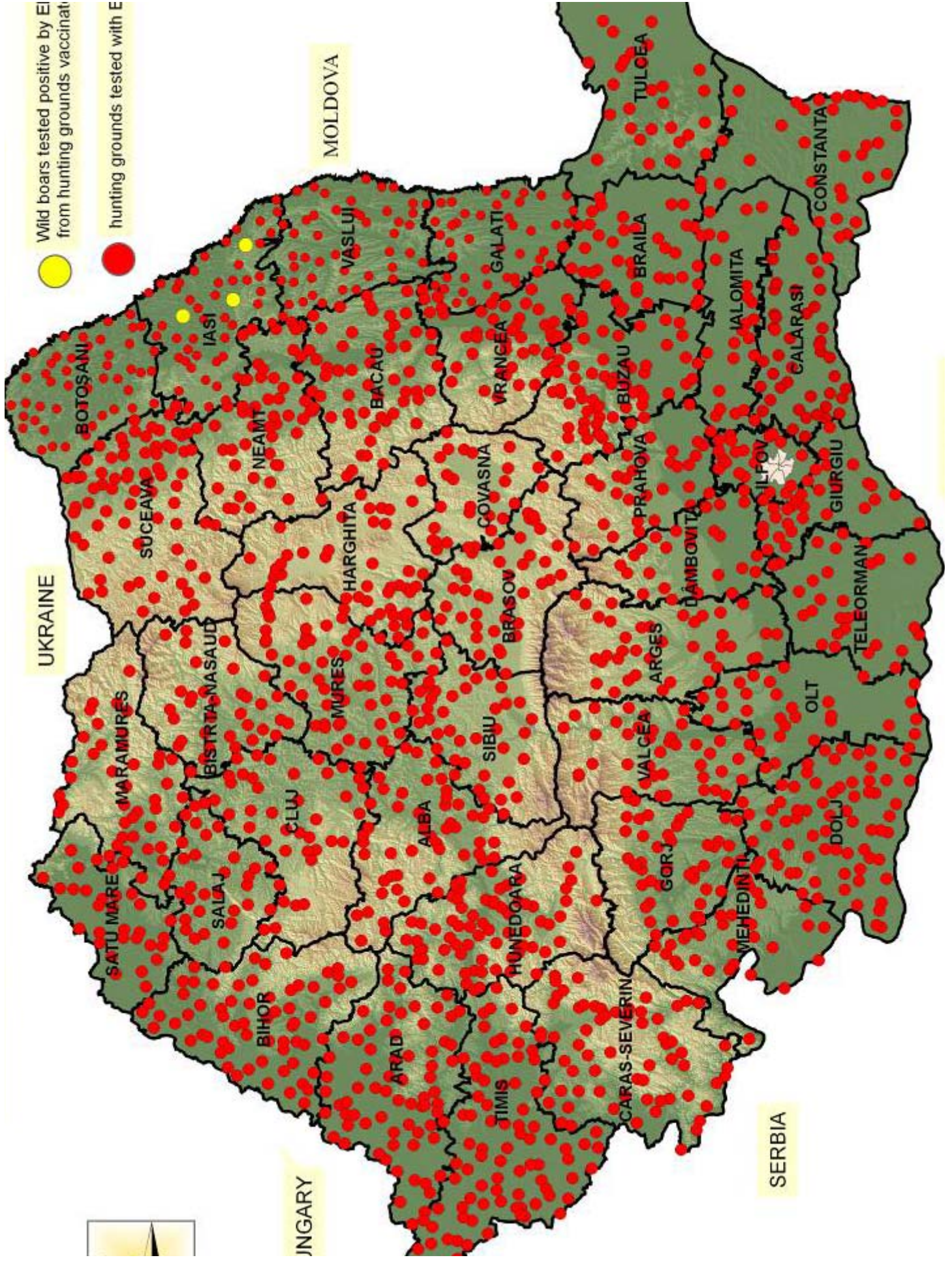
Year	Animals tested				Tests	
	Sows	Sick	Dead	Fetus	ELISA	PCR
2013	1791	3142	4011	177	1791	7330

Map of domestic active and pasive surveillance



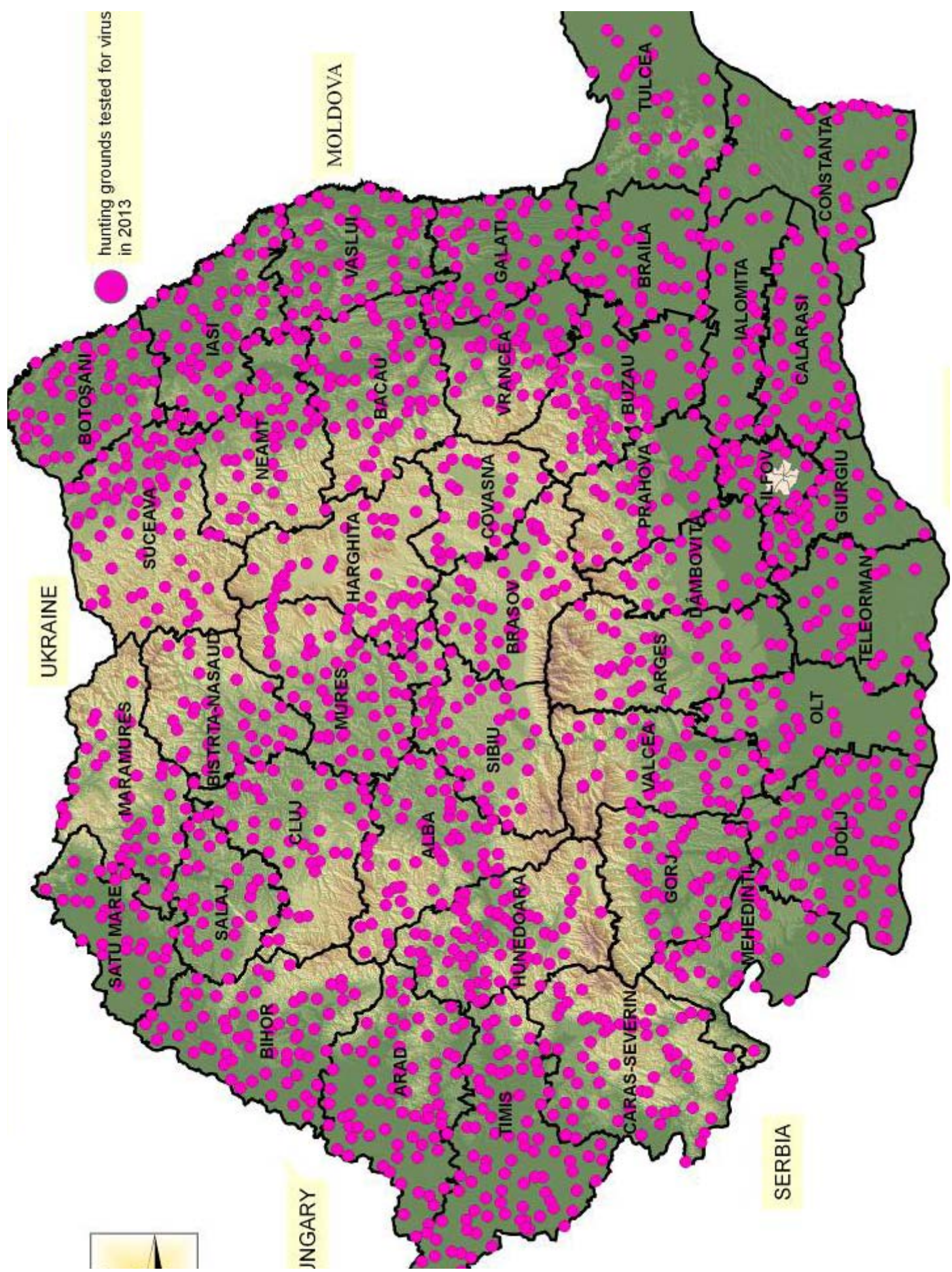
Wild boars Virusological Surveillance 2013

Wild boars age	Elisa				FAT			RT-PCR		
	Sample	P	N	D	Sample	P	N	Sample	P	N
TOTAL	9492	6 all over 4 years	0	0	14477	0	0	9278	0	0





hunting grounds tested for virus
in 2013



UKRAINE

MOLDOVA

HUNGARY

SERBIA

BOTOȘANI

MARAMUREȘ

SATU MARE

SALAJ

BIHOR

BISTRITA-NASAUD

CLUJ

ARAD

TIMIS

MURES

ALBA

HUNEDOARA

ARAD

TIMIS

GORJ

CARAS-SEVERIN

MEHEDINTI

DOLJ

VALCEA

ARGES

OLT

TELEORMAN

GIURGIU

CONSTANTA

SUCEAVA

NEAMT

HARGHITA

COVASNA

BRASOV

SIBIU

VALCEA

ARGES

OLT

TELEORMAN

GIURGIU

CONSTANTA

ILFOV

DAMBOVITA

PRAHOVA

BUZAU

VRANCEA

GALATI

IASI

VASLUI

BOTOȘANI

SUCEAVA

NEAMT

HARGHITA

COVASNA

BRASOV

SIBIU

VALCEA

ARGES

OLT

TELEORMAN

GIURGIU

CONSTANTA

ILFOV

DAMBOVITA

PRAHOVA

BUZAU

VRANCEA

GALATI

IASI

VASLUI

BOTOȘANI

SUCEAVA

NEAMT

HARGHITA

COVASNA

BRASOV

SIBIU

VALCEA

ARGES

OLT

TELEORMAN

GIURGIU

CONSTANTA

ILFOV

DAMBOVITA

PRAHOVA

BUZAU

VRANCEA

GALATI

IASI

VASLUI

BOTOȘANI

SUCEAVA

NEAMT

HARGHITA

COVASNA

BRASOV

SIBIU

VALCEA

ARGES

OLT

TELEORMAN

GIURGIU

CONSTANTA

ILFOV

DAMBOVITA

PRAHOVA

BUZAU

VRANCEA

GALATI

IASI

VASLUI

BOTOȘANI

SUCEAVA

NEAMT

HARGHITA

COVASNA

BRASOV

SIBIU

VALCEA

ARGES

OLT

TELEORMAN

GIURGIU

CONSTANTA

ILFOV

DAMBOVITA

PRAHOVA

BUZAU

VRANCEA

GALATI

IASI

VASLUI

BOTOȘANI

SUCEAVA

NEAMT

HARGHITA

COVASNA

BRASOV

SIBIU

VALCEA

ARGES

OLT

TELEORMAN

GIURGIU

CONSTANTA

ILFOV

DAMBOVITA

PRAHOVA

BUZAU

VRANCEA

GALATI

IASI

VASLUI

BOTOȘANI

SUCEAVA

NEAMT

HARGHITA

COVASNA

BRASOV

SIBIU

VALCEA

ARGES

OLT

TELEORMAN

GIURGIU

CONSTANTA

ILFOV

DAMBOVITA

PRAHOVA

BUZAU

VRANCEA

GALATI

IASI

VASLUI

BOTOȘANI

SUCEAVA

NEAMT

HARGHITA

COVASNA

BRASOV

SIBIU

VALCEA

ARGES

OLT

TELEORMAN

GIURGIU

CONSTANTA

ILFOV

DAMBOVITA

PRAHOVA

BUZAU

VRANCEA

GALATI

IASI

VASLUI

BOTOȘANI

SUCEAVA

NEAMT

HARGHITA

COVASNA

BRASOV

SIBIU

VALCEA

ARGES

OLT

TELEORMAN

GIURGIU

CONSTANTA

ILFOV

DAMBOVITA

PRAHOVA

BUZAU

VRANCEA

GALATI

IASI

VASLUI

BOTOȘANI

SUCEAVA

NEAMT

HARGHITA

COVASNA

BRASOV

SIBIU

VALCEA

ARGES

OLT

TELEORMAN

GIURGIU

CONSTANTA

ILFOV

DAMBOVITA

PRAHOVA

BUZAU

VRANCEA

GALATI

IASI

VASLUI

BOTOȘANI

SUCEAVA

NEAMT

HARGHITA

COVASNA

BRASOV

SIBIU

VALCEA

ARGES

OLT

TELEORMAN

GIURGIU

CONSTANTA

ILFOV

DAMBOVITA

PRAHOVA

BUZAU

VRANCEA

GALATI

IASI

VASLUI

BOTOȘANI

SUCEAVA

NEAMT

HARGHITA

COVASNA

BRASOV

SIBIU

VALCEA

ARGES

OLT

TELEORMAN

GIURGIU

CONSTANTA

ILFOV

DAMBOVITA

PRAHOVA

BUZAU

VRANCEA

GALATI

IASI

VASLUI

BOTOȘANI

SUCEAVA

NEAMT

HARGHITA

COVASNA

BRASOV

SIBIU

VALCEA

ARGES

OLT

TELEORMAN

GIURGIU

CONSTANTA

ILFOV

DAMBOVITA

PRAHOVA

BUZAU

VRANCEA

GALATI

IASI

VASLUI

BOTOȘANI

SUCEAVA

NEAMT

HARGHITA

COVASNA

BRASOV

SIBIU

VALCEA

ARGES

OLT

TELEORMAN

GIURGIU

CONSTANTA

ILFOV

DAMBOVITA

PRAHOVA

BUZAU

VRANCEA

GALATI

IASI

VASLUI

BOTOȘANI

SUCEAVA

NEAMT

HARGHITA

COVASNA

BRASOV

SIBIU

VALCEA

ARGES

OLT

TELEORMAN

GIURGIU

CONSTANTA

ILFOV

DAMBOVITA

PRAHOVA

BUZAU

VRANCEA

Costs of CSF program -2013

TOTAL COST Sampling	COST of Tests Domestic Pigs	COST of Tests Wild Boars	TOTAL COST Tests	TOTAL COST General
493,508.07 EUR	1,038,452.99 EUR	198,024.77 EUR	1,236,477.76 EUR	1,729,985.83 EUR

729.565 backyards inspected in 2013 by empowered private vets for the clinical inspections of the pigs

Cost of inspections for 2013 aprox **9,2 million Euro** which are **not co-financed by European Commission**

Conclusions

Results obtained during 2013 and so far in 2014 from the implemented surveillance plans would make plausible to assume that it is highly unlikely that the CSF virus has circulated in the domestic and wild pig populations in Romania for at least the last 12 months.

Main Objectives regarding surveillance in 2013-2014

- Early detection of CSF infections
- Control of movements between nonprofessional holdings
- Making CSF prevention and control responsibility of government, with veterinary service taking on leading role in close coordination with relevant ministries and agencies, including customs, hunters, internal affairs and the police;

**Thank you for your
attention !**