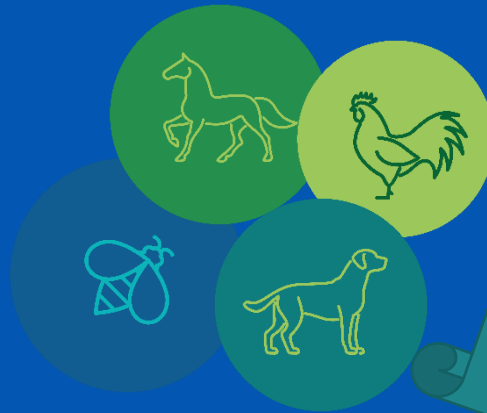




Certification, self-declaration and notification

Rules on animal health certification, self-declaration and notification of movements of kept terrestrial animals, of germinal products and of aquatic animals to other Member States

BTSF AHL seminar



AHL Part IV,
Title I,
Chapter 3,
Section 7,
Article 143 to
151

Delegated
Regulation (EU)
2020/688 Part II,
Chapter 8,
Articles 69-92,
Part III, Articles
102-103, and
Annex VIII

Animal health certification

AHL Part IV,
Title I, Chapter
5, Section 3,
Article 161
and 162 and
Section 4,
Article 164



Delegated Regulation (EU)
2020/686: Part III,
Chapter 2, Articles 30 to 32
Chapter 3, Articles 39 and 40
Chapter 4, Article 46, and
Annex IV

AHL Part IV,
Title II,
Chapter 2,
Section 5,
Articles 208 to
218



Delegated
Regulation (EU)
2020/990
Articles 12, 13 &
15-19

Animal health certification

General rules for terrestrial animals, germinal products, aquatic animals

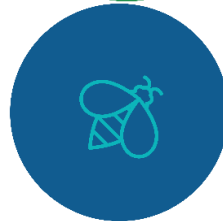
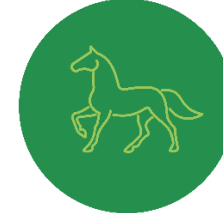
- When required by the rules, for movements (e.g. to another MS), a consignment must be accompanied by an animal health certificate issued by the competent authority of the Member State of origin
- An animal health certificate shall
 - be verified, stamped and signed by an official veterinarian
 - remain valid for the period, if provided for in a delegated act, during which animal health guarantees continue to be fulfilled by the consignment
- Documentary, identity and physical checks to be carried out by the official veterinarian before signing the animal health certificate

Content of animal health certificates

- An establishment or place of origin and an establishment or place of destination
- Description of the commodity (species, category, type)
- Quantity (number, volume, weight)
- Information allowing traceability of the commodity (identification, registration, marking)
- Information needed to demonstrate that the consignment fulfils the relevant animal health requirements

Animal health certification – kept terrestrial animals

- **Additional species (DR 2020/688):** captive birds, hatching eggs of captive birds, honeybees, bumble bees (except from environmentally isolated establishments), primates, dogs, cats, ferrets, other carnivores,
- Details of content of certificates (Articles 73-88 DR 2020/688)
 - References to requirements in specific Articles
 - References to Annex VIII
- Responsibility of competent authorities (Article 91 DR 2020/688)
 - Details of documentary, identity and physical checks, examinations, inspections
- Validity of certificates: 10 days + derogations + waterways
- **Derogations from AHL:** registered equine animals (special agreements between MSs), travelling circuses and animal acts

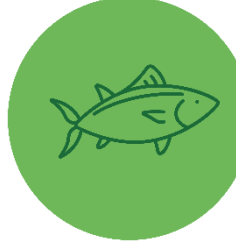


Animal health certification – germinal products



- a **visual examination** of the transport container - verification by official veterinarian of
 - the seal and number applied by the centre or team veterinarian
 - if necessary, the germinal products placed in the transport container (after the check a seal applied by official veterinarian)
- a **documentary check** of the data submitted by the centre or team veterinarian (records kept by germinal product establishment; verification of the mark on the straws or other packages, etc.)
- animal health certificate **issued within 72 hours** preceding the time of dispatch of the consignment of germinal products

Animal health certification - aquatic animals



- Required in all cases when **movements of listed species** are destined for **disease-free** MS/zone/compartment or for a MS/zone/compartment subject to an **eradication programme**
- **Derogation possible within a MS**, provided an alternative system is in place to ensure the traceability of consignments
- **Derogation for wild** aquatic animals harvested or caught for **direct human consumption**
- Derogations from the requirement for a **pre-movement inspection to be carried out within 72 hours preceding the time of dispatch** under certain circumstances

Model animal health certificates

- Joint legal basis: AHL and Official Controls Regulation (OCR)
- Including animal health attestation and others (public health, animal welfare, residues (where required), etc.)
- Animal health attestations mirror requirements laid down in AHL and relevant delegated acts
- **Model official certificates laid down in Commission Implementing Regulations**
 - Regulation (EU) 2020/2235 - standard models for official certificates + notes for completion + FOOD
 - Regulation (EU) 2020/2236 – aquatic animals and certain products thereof (AQUA)
 - Regulation (EU) 2021/403 – terrestrial animals and germinal products thereof (TERRE)

Transitional measures for ENTRY certificates

- Article 35 of CIR (EU) 2020/2235
- Article 10 of CIR (EU) 2020/2236
- Article 27 of CIR (EU) 2021/403

Consignments of ... which are accompanied by the appropriate certificate issued in accordance with ..., shall be accepted for the entry into the Union until **20 October 2021** provided that the certificate was signed by the person authorised to sign the certificate in accordance with those Regulations before **21 August 2021**.

Transitional measures for INTRA certificates

- Article 35 of CIR (EU) 2020/2235
- Article 10 of CIR (EU) 2020/2236
- Article 27 of CIR (EU) 2021/403

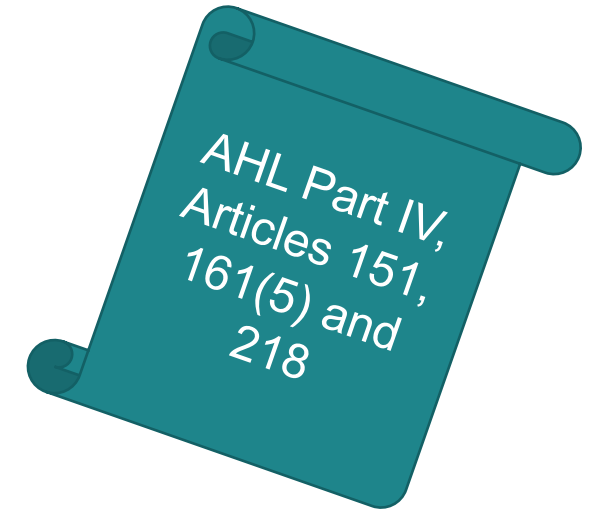
amended by Commission Implementing Regulation (EU) 2021/619

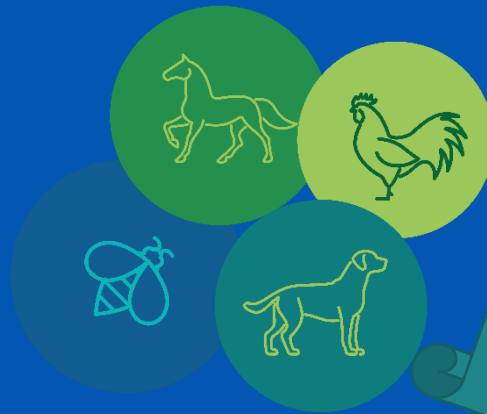
- The **harmonised model template of certificates** for intra-Union movements laid down in Regulation (EC) No 599/2004
- Consignments of ... accompanied by the appropriate animal health certificate issued in accordance with the model laid down in ...

shall be accepted for movements within the Union **until 17 October 2021**

Self-declaration document

- **When animal health certificate is not required:**
 - Either by AHL
 - Or by Delegated Regulations
- e.g. rodents, leporidae, marsupials, etc.
- Issued by the operator of the place of origin
- Needs to contain certain information, including on animal health requirements
- No harmonised models laid down, only content
- **Special:** for certain commodities self-declaration + notification (see later)





AHL Part IV,
Title I,
Chapter 3,
Section 8,
Article 152 to
154

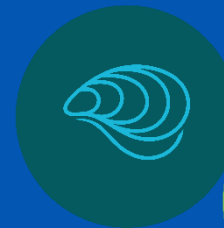
Delegated
Regulation (EU)
2020/688 Part II,
Section 5,
Articles 93-100,
Part III, Articles
104-106

Notification of movements



AHL Part IV,
Title I,
Chapter 5,
Section 3,
Article 163
and Section 4

Delegated Regulation (EU)
2020/686: Part III,
Chapter 2, Articles 33 to 35
Chapter 3, Articles 41 to 43
Chapter 4, Articles 47 and 48



AHL Part IV,
Title II,
Chapter 2,
Section 6,
Articles 219 to
221

Delegated
Regulation (EU)
2020/990, Articles
17 to 21

Notification of movements

- Two levels of obligations:
 - Obligation for operators other than transporters to notify the competent authority in the MS of origin of intended movement
 - Obligation for the competent authority of the MS of origin to notify the competent authority of the MS of destination
- In advance / prior to the movement
- Whenever possible through Traces
- It is automatic when certificate is signed in TRACES by the LVU of origin

Notification without certificate

- **Special:** foreseen for the following commodities:
 - Bumble bees from environmentally isolated production establishments
 - Travelling circuses and animal acts
 - **Germinal products** of bovine, ovine, caprine, porcine or equine animals moved for processing to and from germinal product processing establishment
 - **Germinal products** intended for scientific purposes and for storage at gene banks
 - **Aquaculture animals** destined for a registered/ approved aquaculture establishment, or for release into the wild, in another MS.
 - **Aquaculture animals** Test results and date on which last samples were taken are included when moving from an establishment which is subject to a surveillance programme for a Cat C disease
- Electronic only models in TRACES

Thank you



© European Union 2020

Unless otherwise noted the reuse of this presentation is authorised under the [CC BY 4.0](https://creativecommons.org/licenses/by/4.0/) license. For any use or reproduction of elements that are not owned by the EU, permission may need to be sought directly from the respective right holders.

Slide ¹⁵ xx: **element concerned**, source: e.g. [Fotolia.com](https://www.fotolia.com/); Slide xx: **element concerned**, source: e.g. [iStock.com](https://www.istock.com/)

