



© Ministerie van Landbouw, Natuur en Voedselkwaliteit

Avian Influenza

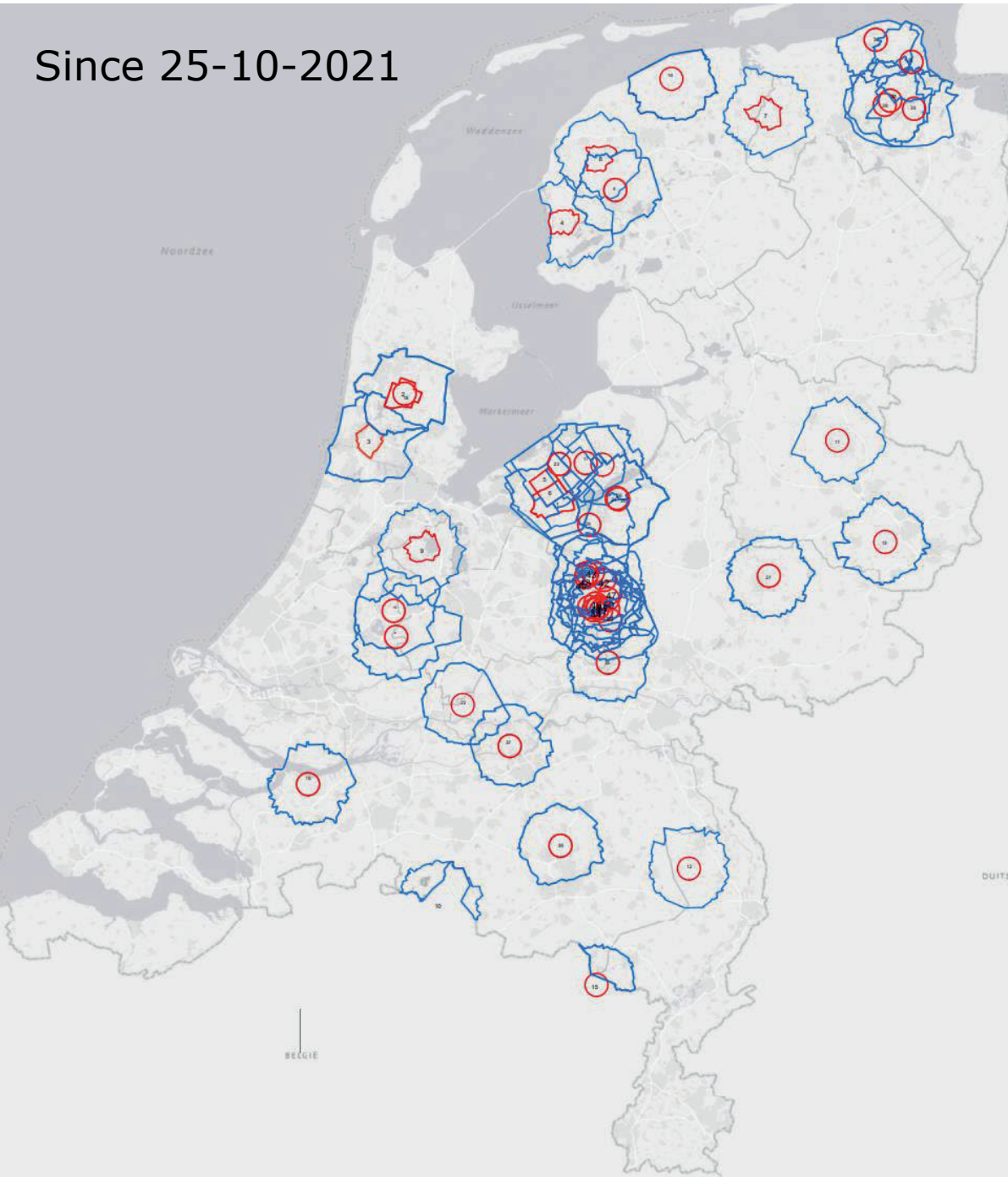
2022

The Netherlands

> Paul Leijs DVM MBA

11 May 2022

Since 25-10-2021

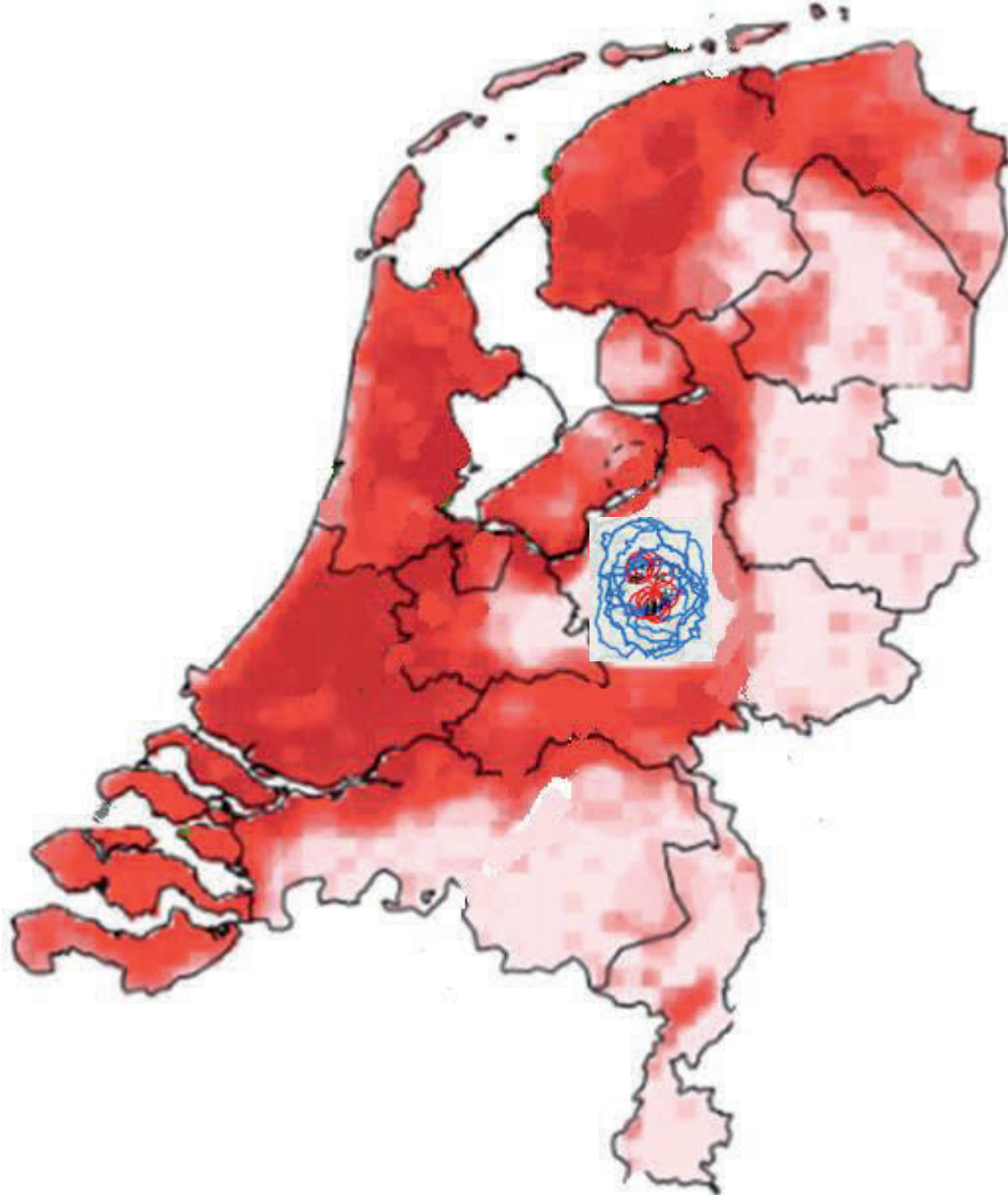


Status 11-05-2022

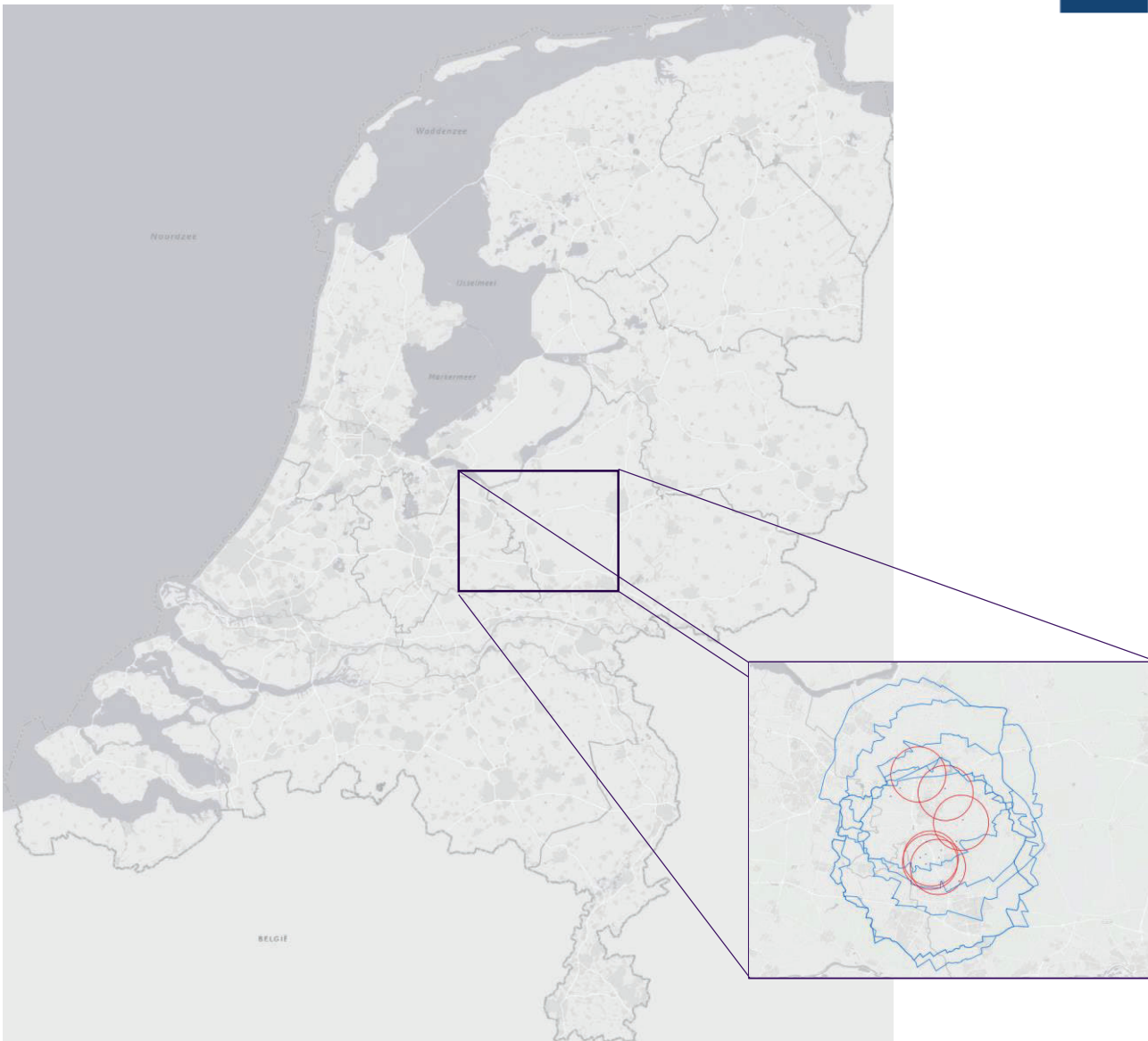


Relative risk HPAI outbreak 2014-2020

(Schreuder et al., 2022)



- > No HPAI outbreaks have been detected at poultry farms for almost 4 weeks since March
- > This silence was interrupted on April 13 by a series of HPAI infections on several farms in "the Gelderse vallei"
 - Most poultry dens area of the Netherlands



12-4-2022 Meat duck farm with 8500 ducks. Less noise, reduction in food and water intake. Increase in number of dead animals and a few with neurological signs. **Culled 13-4-2022**

Poultry farms within	
1 km	5
3 km	3
10 km	49

15-4-2022 Farm with 34.000 laying hens. High amount of dead animals. Swollen heads and closed eyes and eggs with weak shells. **Culled 16-4-2022**

Poultry farms within	
1 km	7
3 km	19
10 km	229

19-4-2022 Farm with 26.000 laying hens. Sluggish animals and an increase of dead animals. **Culled 20-4-2022**

Poultry farms within	
1 km	1
3 km	25
10 km	232

19-4-2022 Farm with 140.000 laying hens. High increases of dead animals. Swollen heads and closed eyes and eggs with weak shells. **Culled 21-4-2022**

Poultry farms within	
1 km	8
3 km	52
10 km	232

Farm with laying hens of the same owner with close contacts with 34.000 laying hens. Also some dead animals. **Culled 21-4-2022**

Poultry farms within	
1 km	8
3 km	19
10 km	232

20-4-2022 Meat ducks parents farm with 3.000 animals. The day before notification everything was normal. This day less noise and sluggish animals and low production and food/ water intake **Culled 21-4-2022**

Poultry farms within	
1 km	8
3 km	32
10 km	254



22-4-2022 Farm with 43.000 laying hens. Dazed animals, reduction and an increase in number of dead animals. Swollen red eyes and diarrhea. Pathological examination brittle livers and scarred kidneys. **Culled 25-4-2022**

Poultry farms within	
1 km	1
3 km	32
10 km	248

23-4-2022 Farm with 28.600 laying hens. Sudden increase of dead animals. **Culled 25-4-2022**

Poultry farms within	
1 km	1
3 km	23
10 km	235

24-4-2022 Farm with 30.800 laying hens. Increased amount of dead animals and decrease in production **Culled 27-4-2022**

Poultry farms within	
1 km	6
3 km	19
10 km	230

28-4-2022 Farm with 50.000 laying hens. High increase of dead animals. **Culled 30-4-2022**

Poultry farms within	
1 km	8
3 km	52
10 km	232

2-5-2022 Farm with 90.000 laying hens. clinical picture not typical for AI. However, there is a decrease in feed intake and increased loss of chickens. **Culled 4-5-2022**

Poultry farms within	
1 km	0
3 km	32
10 km	248

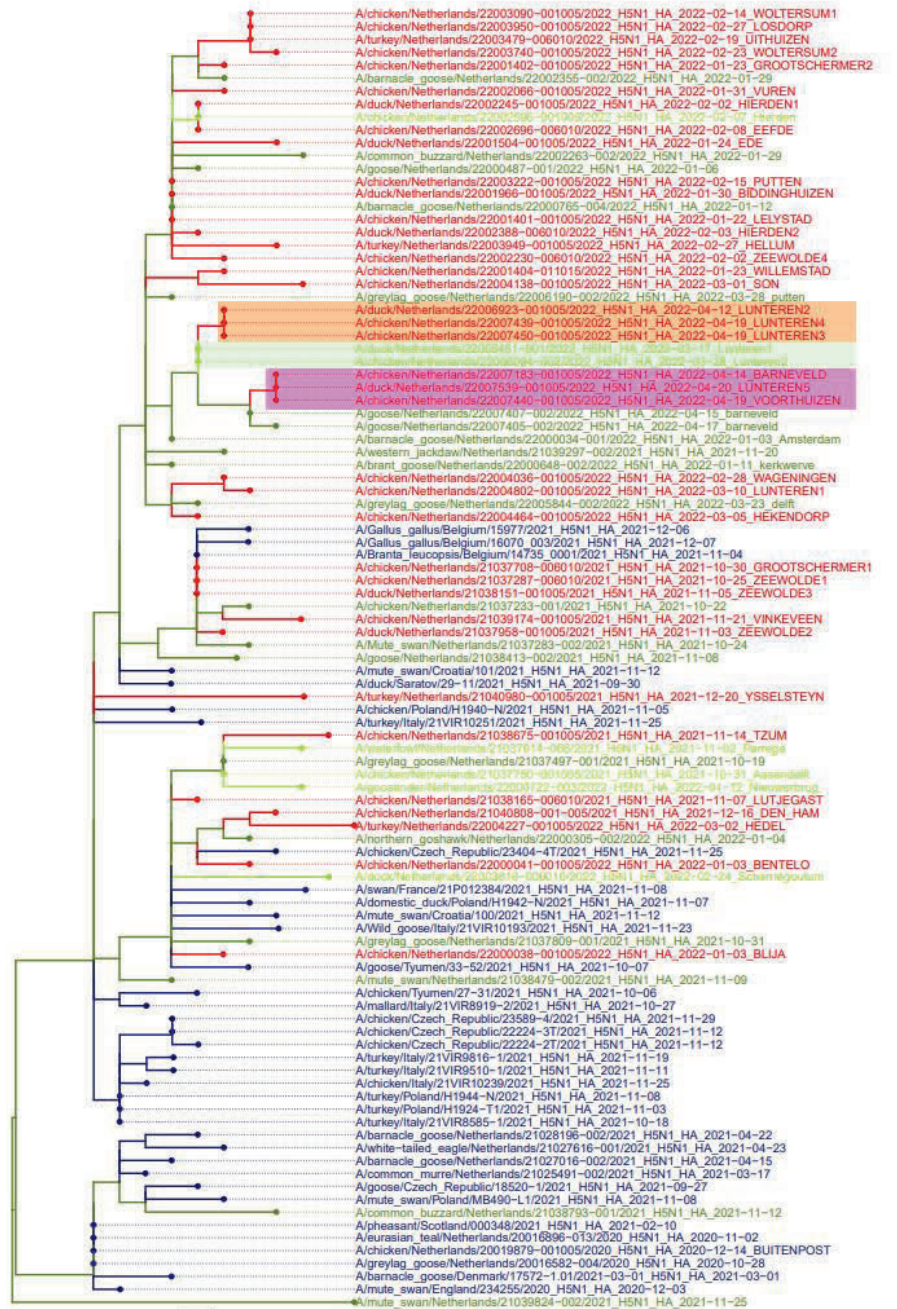
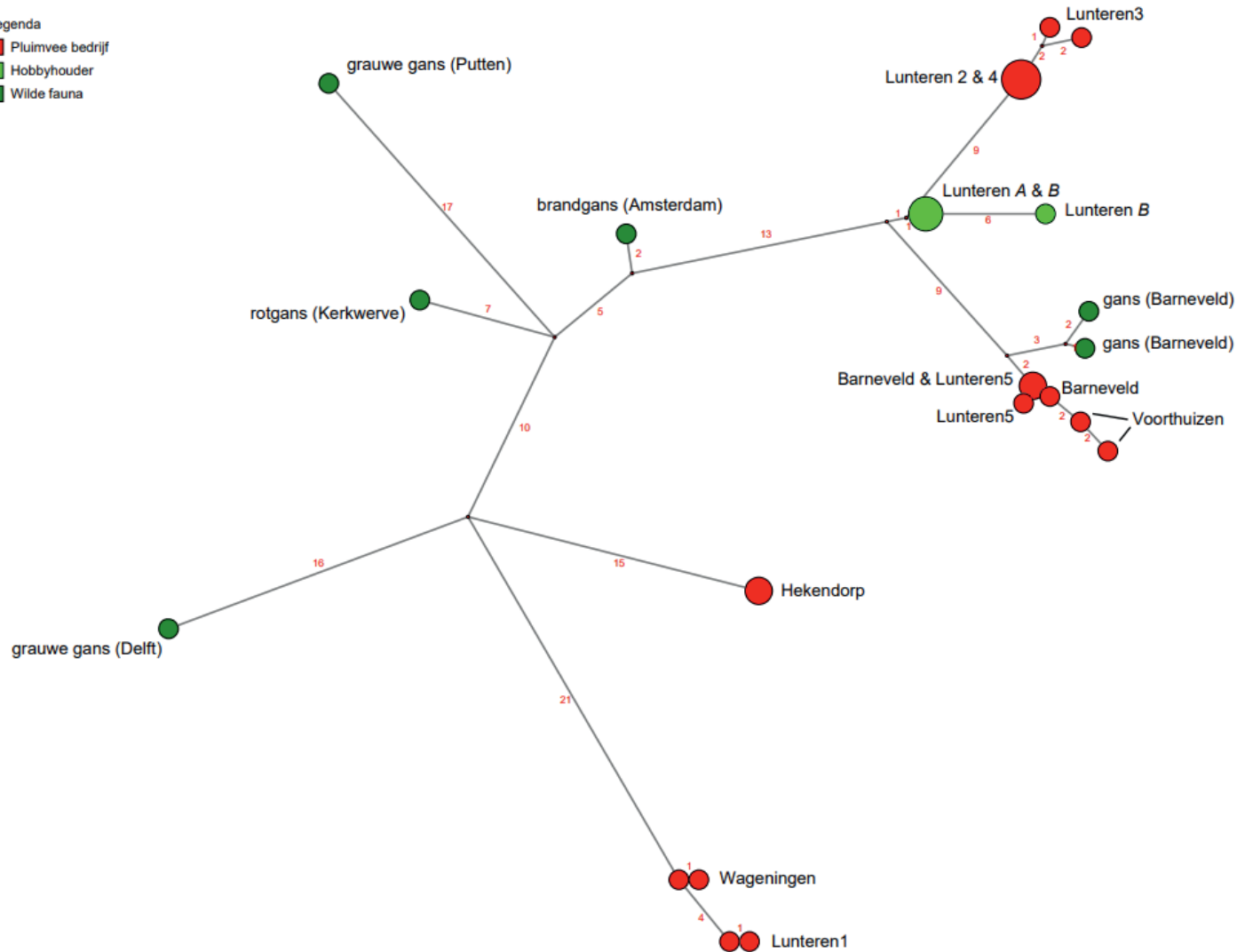
Sequencing



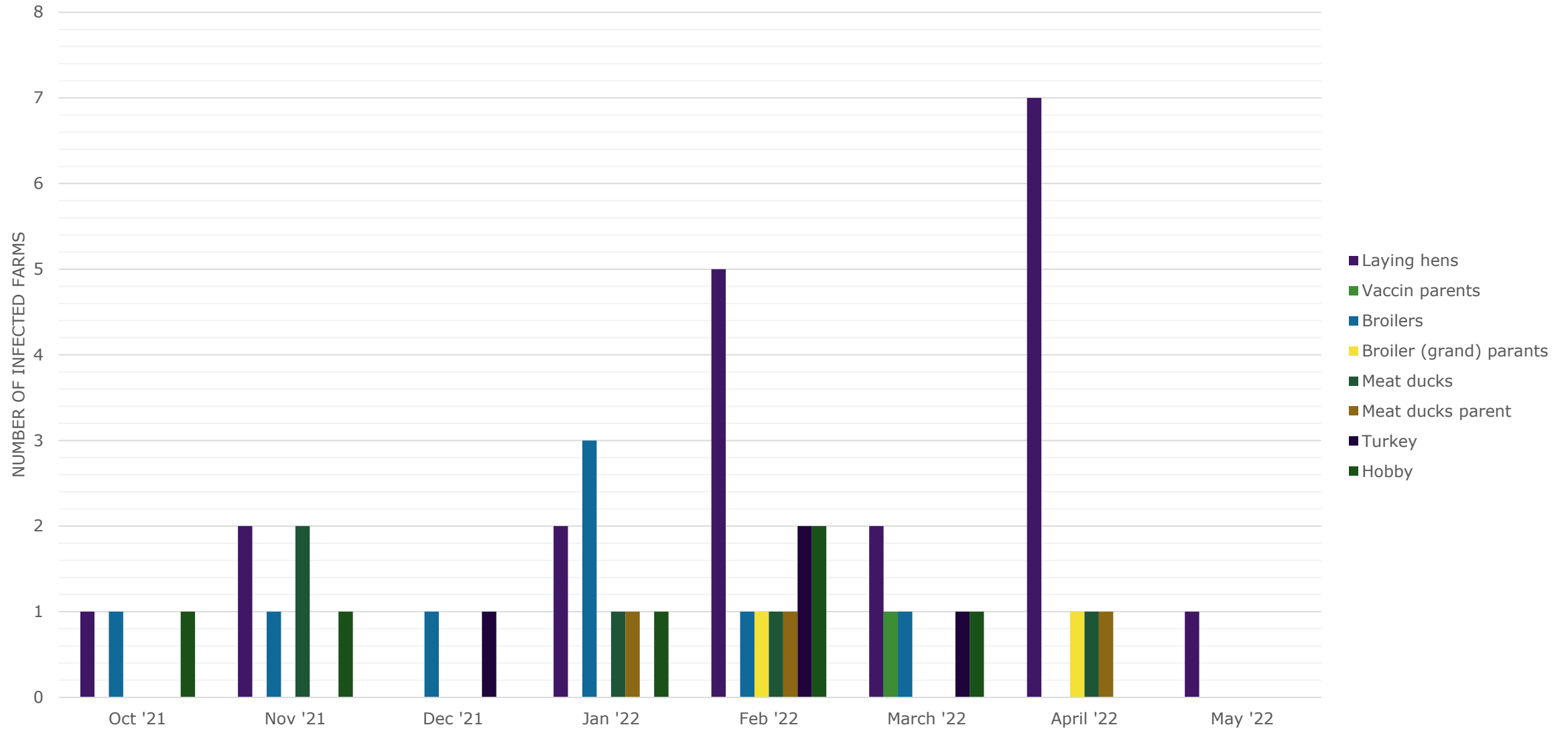
HA

Legenda

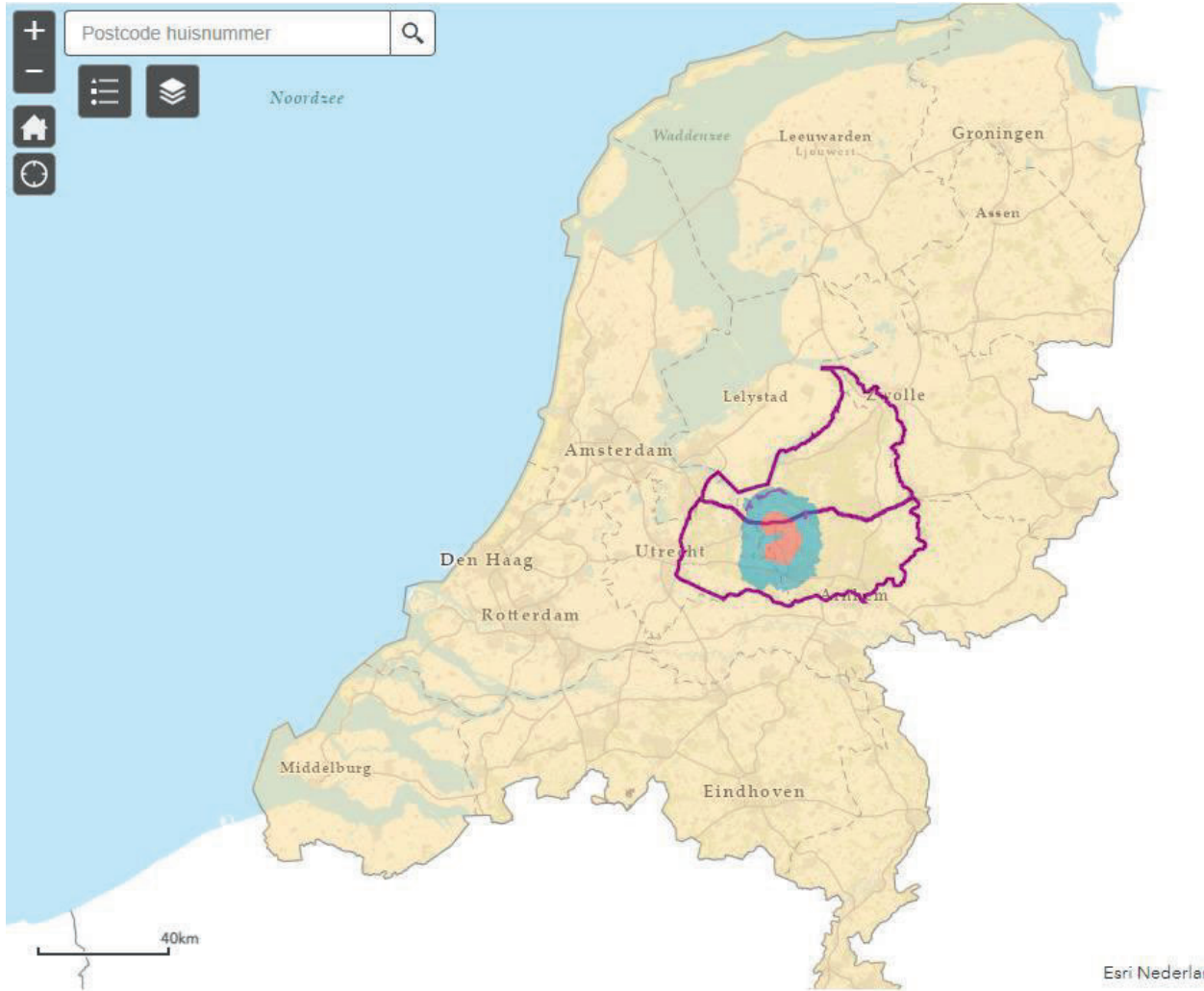
- Pluimvee bedrijf
- Hobbyhouder
- Wilde fauna



group ● 0 ● bedrijven ● hobbyhouders ● wilde_vogels



Additional (National) measures



All measures have been taken according 2016/429 and 2020/687

[Additional \(National\) measures:](#)

All commercial keepers must house their birds and report increased poultry mortality earlier. All private keepers must shield their risk birds.

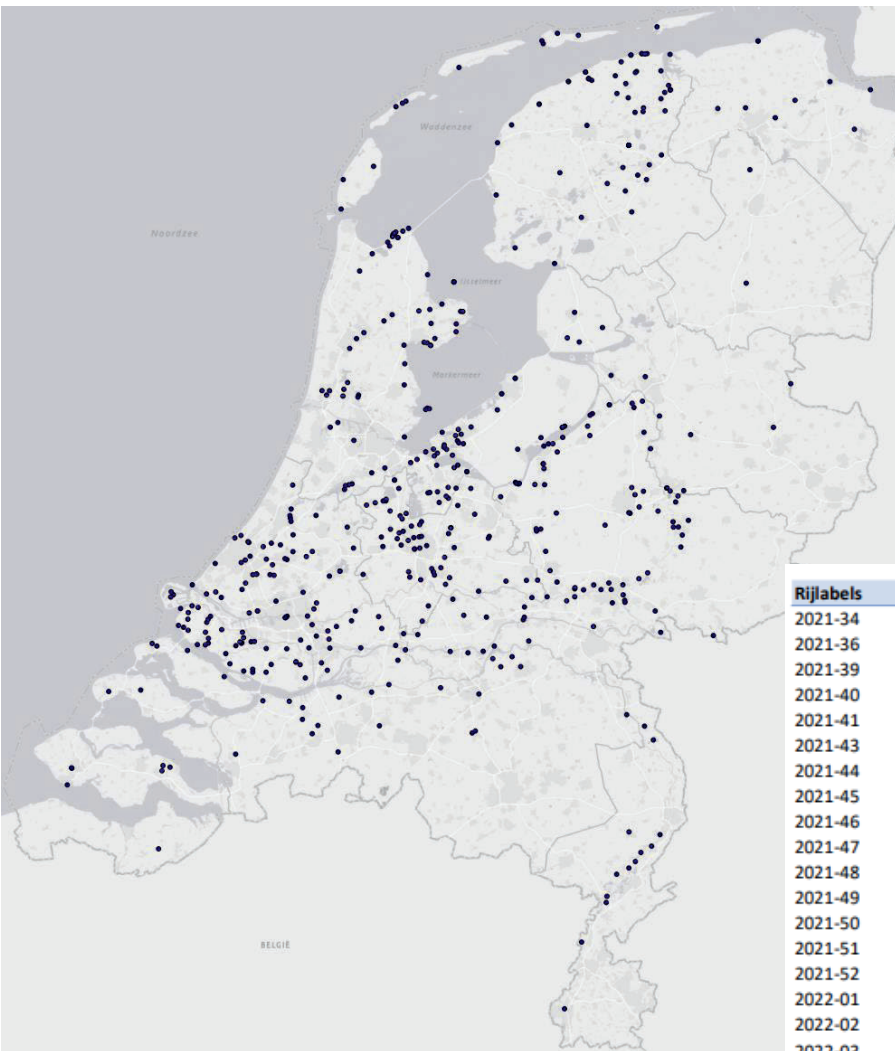
<https://www.rvo.nl/dierziektenviewer/>

- Two buffer zones
- All poultry in farms in the 1 km zone were also culled
- Transport of poultry (products) in these buffer zones is prohibited excluding transit within 72 hours after an new outbreak.
- Movement of eggs and animals for slaughter is possible again after these 72 hours under strict conditions and with an exemption.

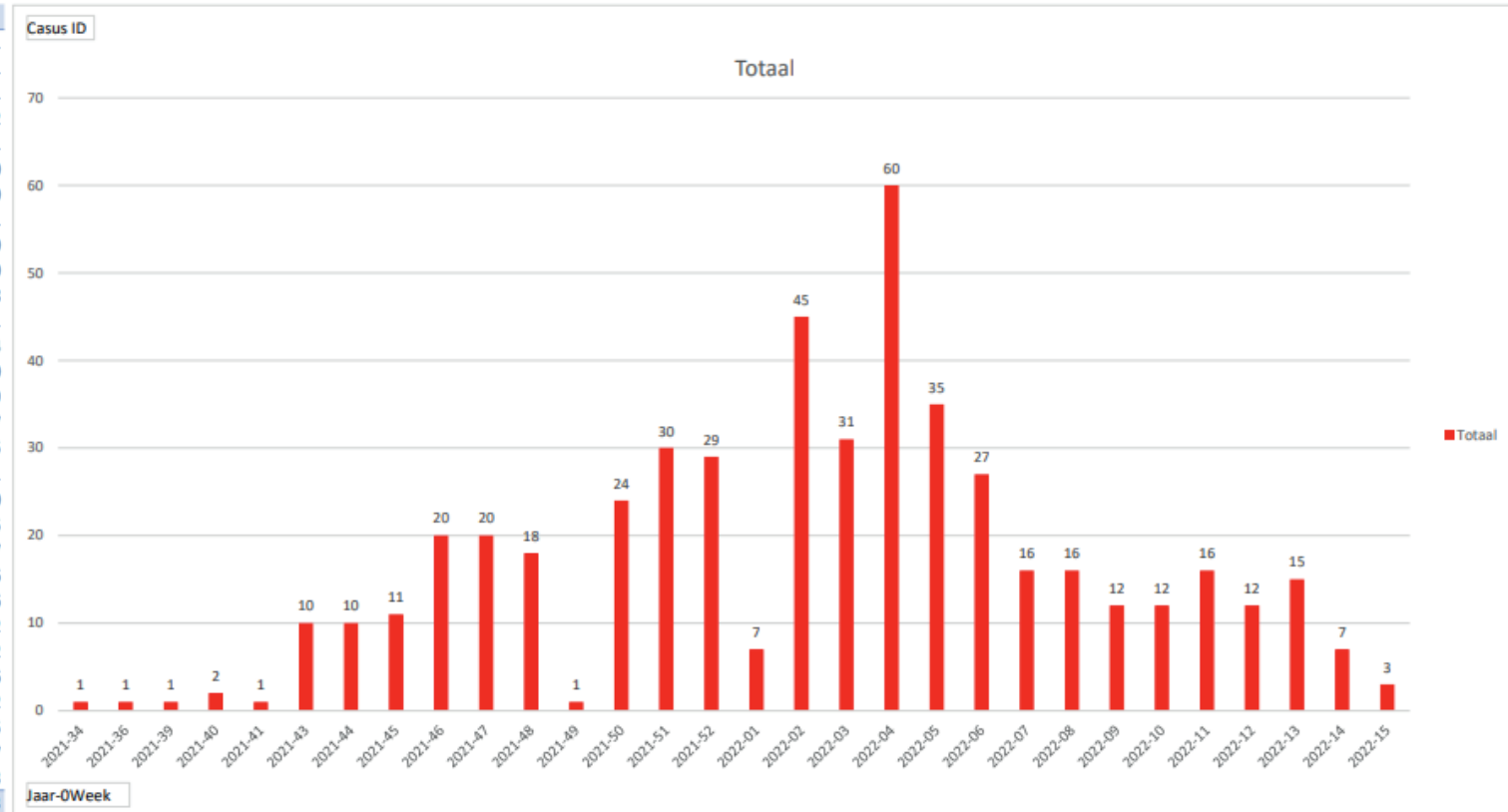
National there are so-called hygiene protocols to be applied by carriers during an outbreak. This contains temporary measures, such as the cleaning and disinfection of means of transport.



Infected wild birds with avian influenza



Rijlabels	Casus ID
2021-34	1
2021-36	1
2021-39	1
2021-40	2
2021-41	1
2021-43	10
2021-44	10
2021-45	11
2021-46	20
2021-47	20
2021-48	18
2021-49	1
2021-50	24
2021-51	30
2021-52	29
2022-01	7
2022-02	45
2022-03	31
2022-04	60
2022-05	35
2022-06	27
2022-07	16
2022-08	16
2022-09	12
2022-10	12
2022-11	16
2022-12	12
2022-13	15
2022-14	7
2022-15	3
Eindtotaal	493





Thank you for your
attention