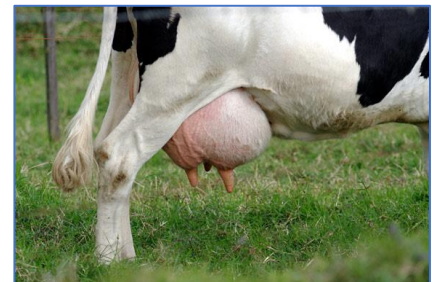


Transport of lactating cows

✓ Transport of lactating cows

Lactating cows are vulnerable animals and need to be transported with **special care**. Cows in milk that are not regularly milked **can suffer severe pain**, because of increasing pressure in the udder and the higher risk to develop mastitis or other illness. Special care and good transport practices can prevent this.

If a cow can not get up anymore (*downer cow*), call the veterinarian immediately!



Preparation for lactating cows

1

Remember -
in the **first week
after calving,**
transport is
prohibited

2

If lactating cows are not
accompanied by their
calves, they must be
milked **at least every 12
hours**

3

If lactating cows are to be
transported in long journeys, make
sure that the control post(s) has
milking facilities

4

Always **calmly unload**
the cows into the
milking parlor of the
control post

5

Even better! **Provide
water and feed** when
milking and make sure
that the cows can eat /
drink before you load
them to resume the
journey



For lactating cows, optimum temperature is between 5°C to 15°C.

Below 5°C, cows need extra warmth - especially if air draught and high humidity. **Do not transport when over 30°C.**