

# ScoPAFF

## Highly Pathogenic Avian influenza in France

2nd March 2017



# Framework

- Situation in France
  - Outbreaks
  - National situation : about domestic breedings and wild birds
  - Epidemiological situation
- Control measures
  - Eradication strategy
  - Headcount of slaughters
  - Restocking
  - Future planning



# Outbreaks on the 1<sup>st</sup> of March

- Since November 28<sup>th</sup> 2016, **383** HPAI outbreaks have been detected in domestic poultry and **46** in wild birds.



# Situation FR, 01/03

HP/FP	Serotype	Domestic poultry	Captive wildbirds	wildbirds			
		Palmipeds	Galliformes	Multi-species	NR		
LP	H5	9					
	H5N1	12	1				
	H5N2	4				1	
	H5N3	4					
	H5N8	1					
	H5N9	6					
	<b>Total</b>		<b>36</b>	<b>1</b>	<b>0</b>	<b>0</b>	<b>1</b>
HP	H5	76	5	3	6		19
	H5N_ongoing	8	1	2			
	H5N8	221	37	18	6	1	27
	<b>Total</b>	<b>305</b>	<b>43</b>	<b>23</b>	<b>12</b>	<b>1</b>	<b>46</b>

## Situation FR, 27/02

DPT	domestic	captive	wildbirds
12	2 (1%)		
31	1 (<1%)		
32	96 (25 %)		7 (15%)
40	218 (57%)		3 (7%)
44			1 (2%)
47	10 (3%)		3 (7%)
50			1 (2%)
62		1 (100%)	
64	20 (5%)		3 (7%)
65	23 (6%)		
74			2 (4%)
79	3 (1%)		
81	8 (2%)		2 (4%)
88			3 (7%)

# Situation FR, wild birds

- Declared outbreaks in wild birds :

Species		Migratory type	Department	viral subtype		Total
French common noun	Latin noun			H5N8	H5Nx	
Buse variable	<i>Buteo buteo</i>	sedentary	32	4	1	5
			40		2	2
			64		1	1
Canard chipeau et Canard siffleur	<i>Anas strepera et Anas penelope</i>	captive wild birds	62	1		1
Canard colvert	<i>Anas platyrhynchos</i>	Big migrant	47	1		1
Canard siffleur	<i>Anas penelope</i>	Big migrant	50	1		1
Cygne	<i>Cygnus spp</i>	small migrant	01	8	6	14
			88	2		2
Cygne tuberculé	<i>Cygnus olor</i>	small migrant	44	1		1
Faucon crécerelle	<i>Falco tinnunculus</i>	sedentary	32	1		1
Goeland	<i>Larus spp</i>	small migrant	74	2		2
Grive musicienne	<i>Turdus philomelos</i>	Big migrant	32		1	1
Héron	<i>Bubulcus spp</i>	sedentary	01		1	1
Héron garde-boeufs	<i>Bubulcus ibis</i>	sedentary	40		1	1
Oie cendrée	<i>Anser anser</i>	small migrant	01	1	1	2
Pie bavarde	<i>Pica pica</i>	sedentary	81	1		1
Pigeon ramier	<i>Columba palumbus</i>	Big migrant	64		2	2
Tourterelle turque	<i>Streptopelia decaocto</i>	sedentary	81	1		1
<b>Total</b>				<b>24</b>	<b>16</b>	<b>40</b>



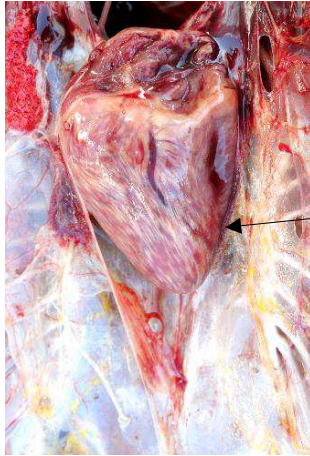
## Symptoms and Clinical Signs in wild birds

- The particular sensitivity of the palmipeds to this virus ;
- Clinical signs 2 to 3 days before the onset of mortality ;
- Decrease in water or food consumption ;
- A preponderance of nervous signs ;
- Animals are prostrate ;
- Torticollis ;
- On the lesional level, pancreatitis and myocarditis are almost systematic and very severe ;
- Congestion of the brain ;
- Splenomegaly.

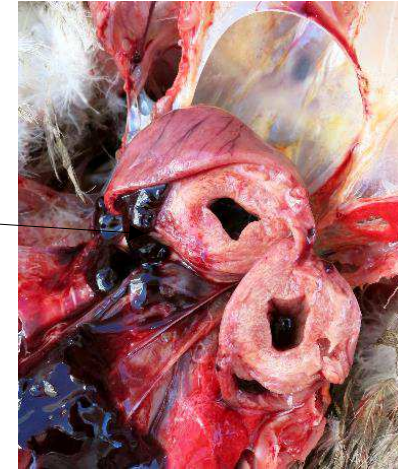




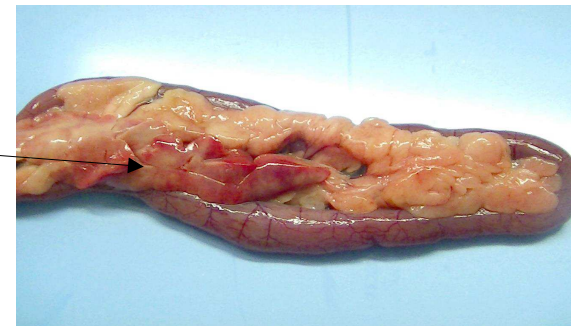
• nervous signs



• myocarditis



• pancreatitis



• Splenomegaly

• Source J-L Guérin, ENVT



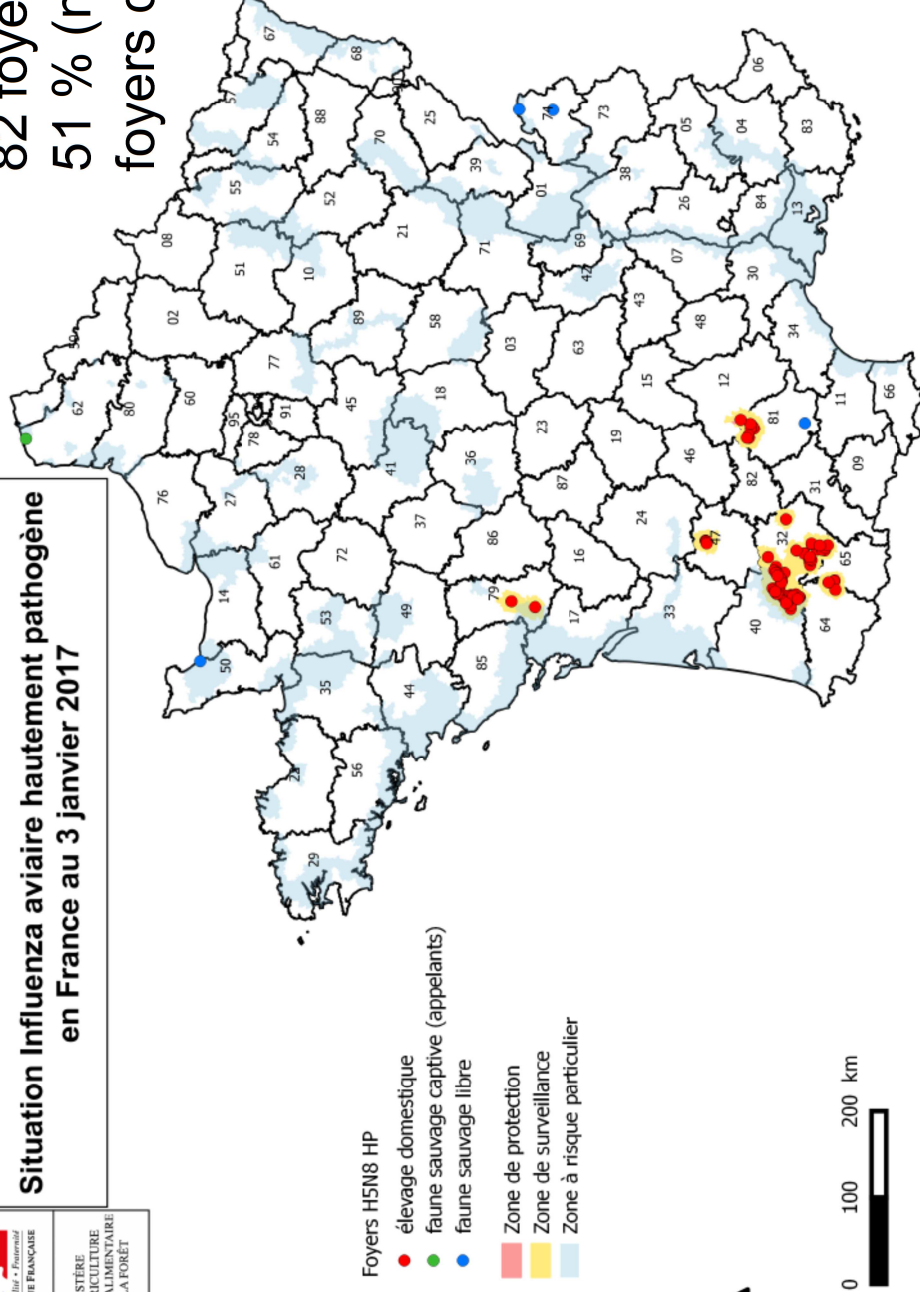


# Situation FR au 03/01, 18h



Situation Influenza aviaire hautement pathogène  
en France au 3 janvier 2017

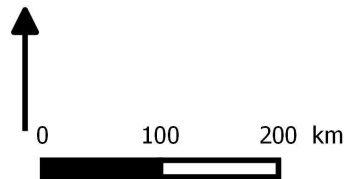
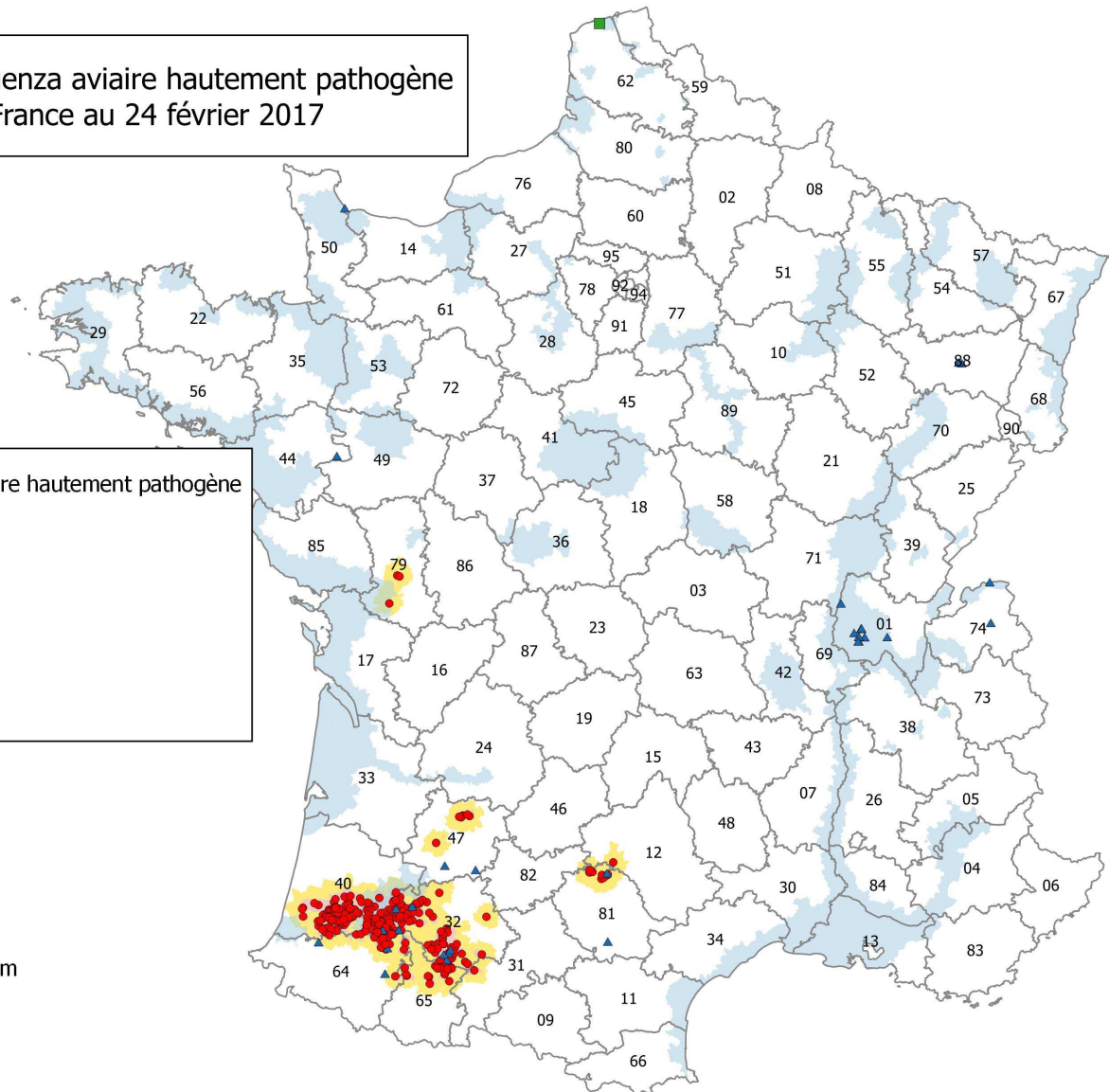
82 foyers  
51 % (n=42) des  
foyers dans le Gers



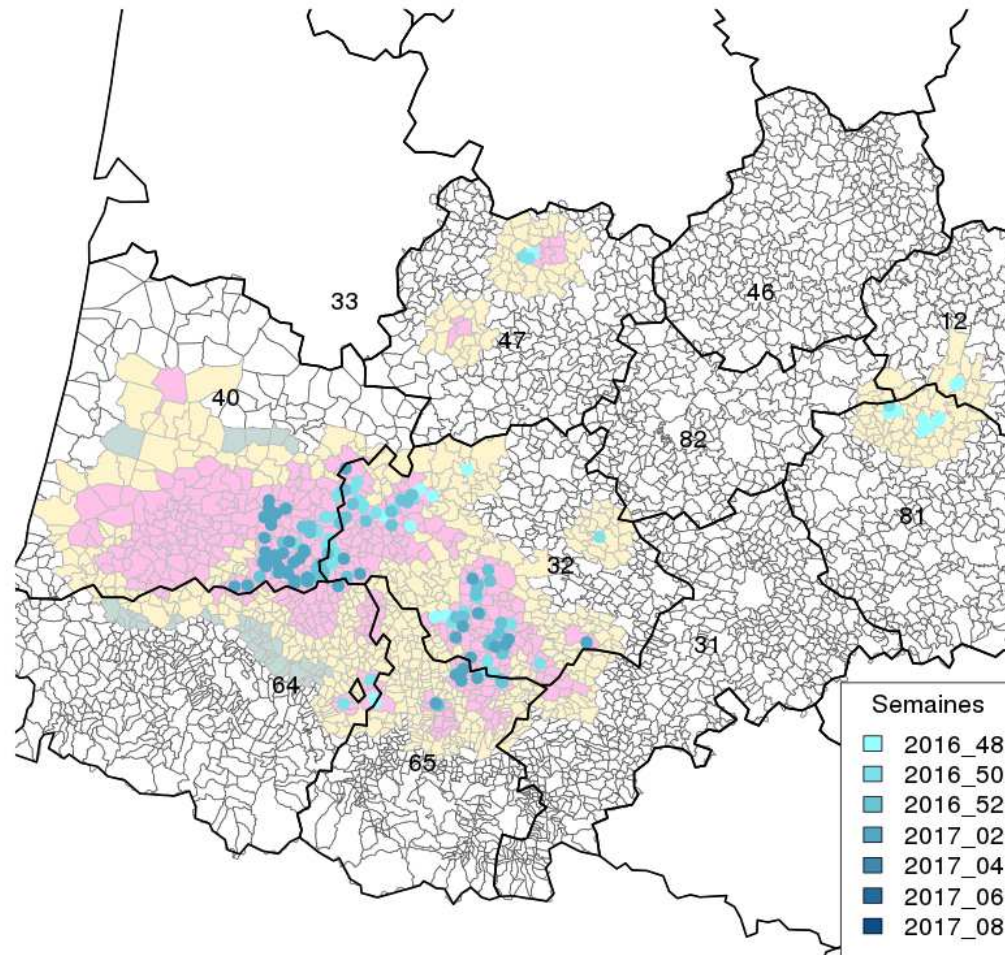
# Situation of HPAI in France, 24/02

Situation Influenza aviaire hautement pathogène  
en France au 24 février 2017

- Foyers confirmés d'Influenza aviaire hautement pathogène
- Elevages domestiques
  - Faune sauvage captive
  - ▲ Faune sauvage non captive
  - Zones écologiques à risque
- Zones réglementées
- zones de protection
  - zones de surveillance



# Situation of HPAI in France, 4 weeks ago

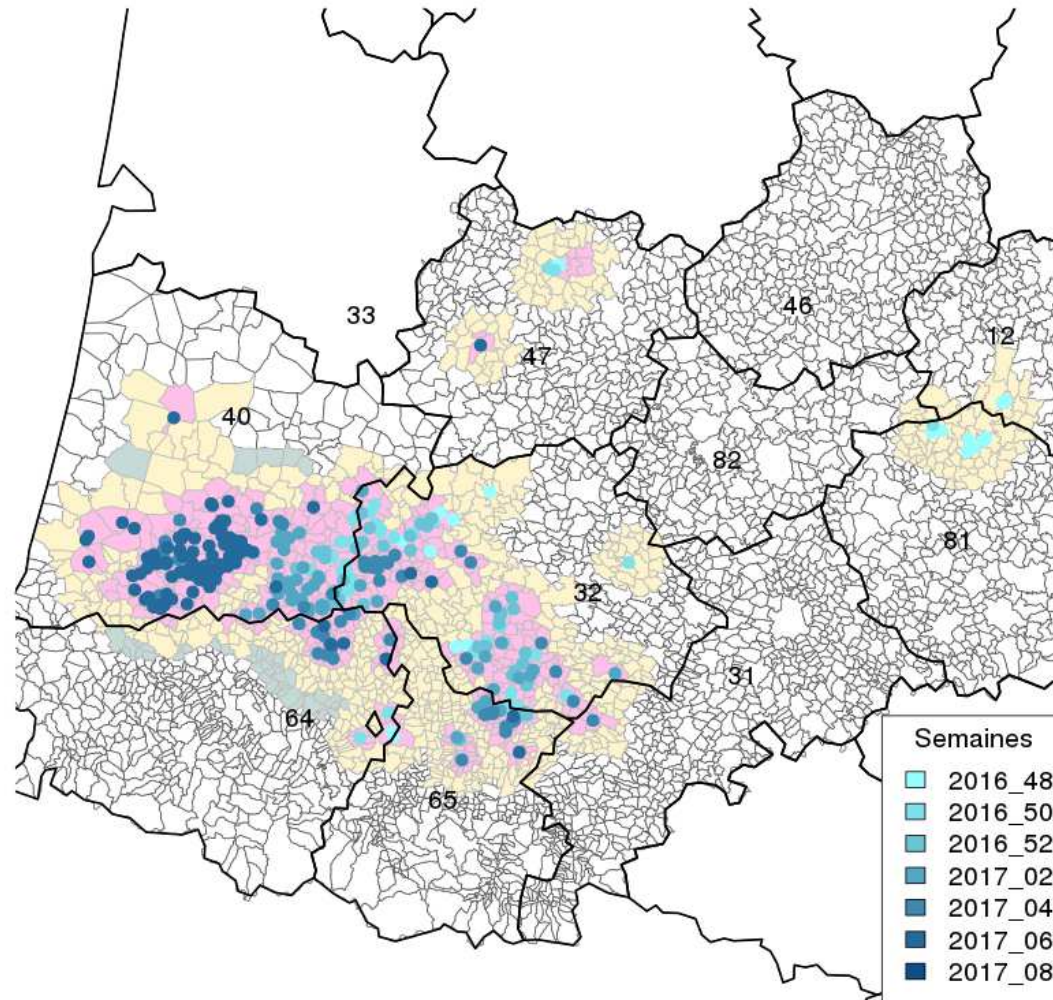




# Situation of HPAI in France, 1st March, 2017



MINISTÈRE  
DE L'AGRICULTURE  
DE L'AGROALIMENTAIRE  
ET DE LA FORÊT



# Situation in South-West France

## 01/03

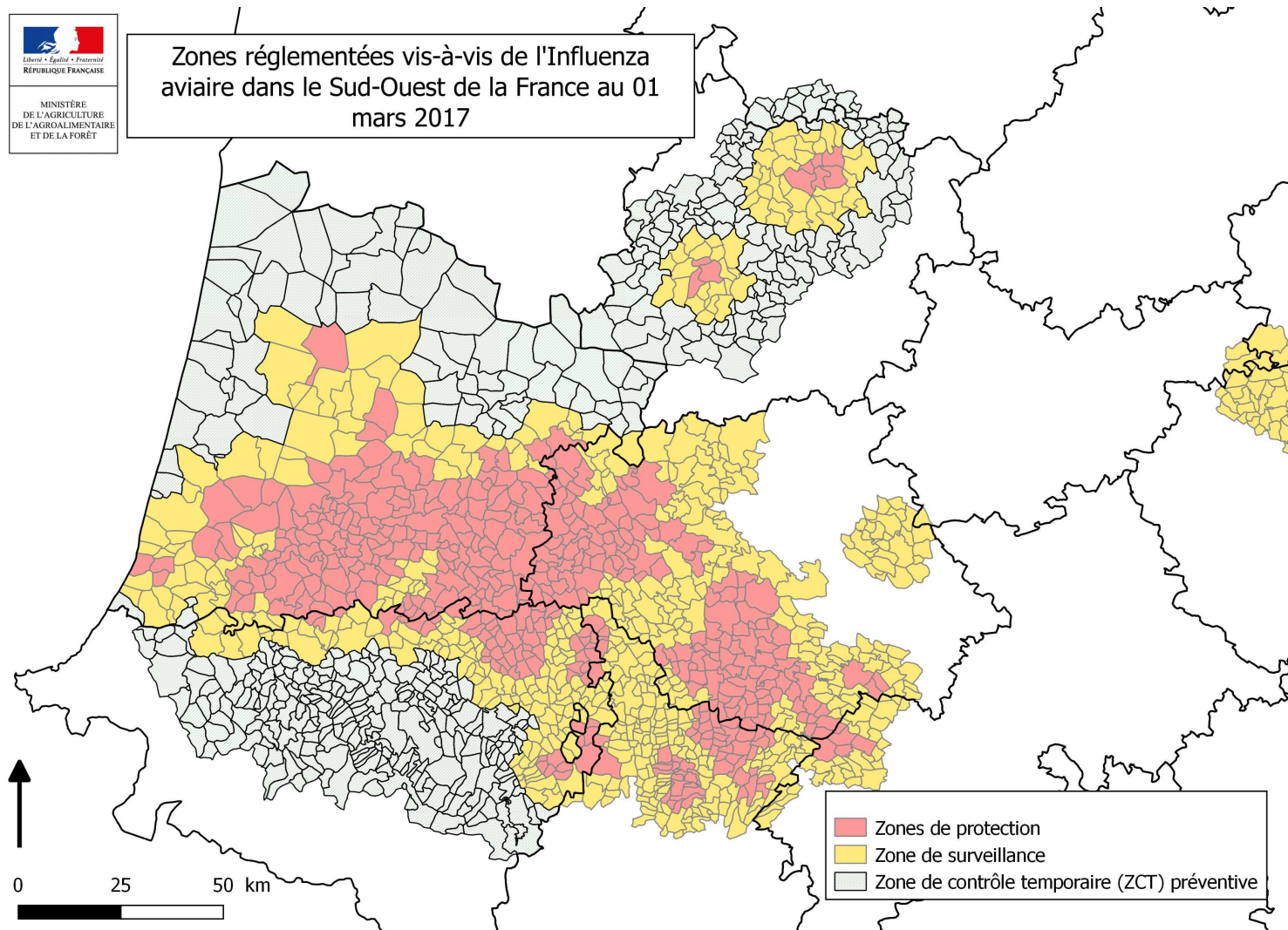


MINISTÈRE  
DE L'AGRICULTURE  
DE L'AGROALIMENTAIRE  
ET DE LA FORÊT



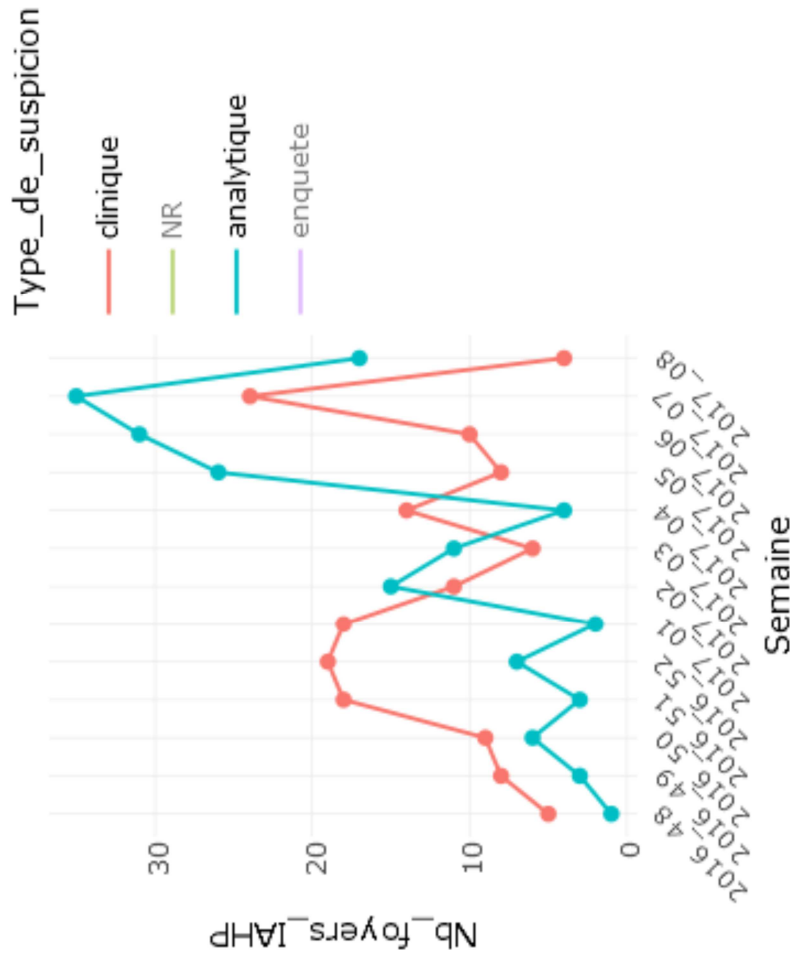
MINISTÈRE  
DE L'AGRICULTURE  
DE L'AGROALIMENTAIRE  
ET DE LA FORÊT

Zones réglementées vis-à-vis de l'Influenza  
aviaire dans le Sud-Ouest de la France au 01  
mars 2017



# Situation of HPAI in France, 27/02

- Temporal variations of the number of outbreaks detected in palmipeds according to surveillance modalities





# Epidemiological situation

- Anses' evaluations have shown :
- The spreading is due to human factors :
  - - division of contaminated lots and shipments to different fattening units;
  - - transports with insufficient cleaning and disinfection;
  - -insufficient application of biosecurity measures;
  - - high density of poultry;
- Wild birds and air spread are considered as a small risk of contamination.





# ANSES Studies

- Avis ANSES 2017-SA-0011
  - Avis ANSES 2017-SA-0026
  - Avis ANSES 2017-SA-0028
- 
- The eradication strategy is based on data analysis by epidemiologists, studies and recommendations given by the ANSES



# Eradication strategy

- The strategy in place depends on the area or the type of contaminated breeding :
- - **preventive slaughters** only in the most contaminated and populated areas : all kinds of poultry in 1 km around the outbreak, and only outdoors palmipeds in 3/10 km around the outbreak depending on the epidemiological situation ;
- - **A temporary controlled zone (TCZ)** around the surveillance zone (SZ) virological screening of palmipeds before movement and no restocking;



# Headcount of slaughters

- **Slaughtered animals in outbreaks :**
- 1 452 000 = 990 000 palmipeds + 424 000 gallus
- **Preventive slaughtered animals :**
- 1 400 000 palmipeds in Gers, Landes, Pyrénées-Atlantiques, Hautes-Pyrénées and Haute-Garonne.
- Total = 2 852 000



# Restocking of galliforms

- **The restocking of galliforms** is allowed under conditions in surveillance and protection zones :
  - - visits with favorable results of all commercial flocks in the protection zone, starting 7 days after removal of the outbreak
  - - 3 weeks period since the end of the outbreak's slaughter and the end of the preliminary cleaning and disinfection ;
  - - the animals have to stay indoor for 4 weeks and be tested 3 weeks after being in outdoors



# Restocking of palmipeds

- Restocking conditions after lifting the SZ:
- - Screening 21 days after being put outdoor or before being sent to another unit;
- - Farmers' commitment to respect biosecurity rules.
- Big reglemented zone in Gers, Landes, Pyrénées-Atlantiques et Hautes-Pyrénées:
- - lifting in one block
- - Crawl space after slaughtering of outbreaks and restocking after favorable screening.



# Future planning

- Lifting of PZ and SZ according to the EU decision D 2008/84
- Difficulties to visit all the backyards in large areas (thousands in km<sup>2</sup>)
- Restriction zone after removal of the SZ to control the restocking of palmipeds
- Reflexion upon further measures to avoid the same situation at the end of 2017

Thank you for your attention

