

# DK FMD simulation exercise - Vet-All

5. februar 2015

Ministeriet for Fødevarer,  
Landbrug og Fiskeri





# Aim

VET – ALL was a full scale exercise with the aim at:

- Testing and developing the veterinary and food safety preparedness in connection with a longer lasting and country-wide outbreak of FMD
- Testing the cross-border collaboration with the veterinary authorities in Schleswig-Holstein, Germany
- Ensuring that the staff have a in depth knowledge to the veterinary preparedness and routines in conducting their specific roles in crisis situations





# Objectives

To test the veterinary and food safety preparedness at central and decentral level in relation to:

- Activation and managing the crisis management organisation at different administrative levels within DVFA
- Management of crisis information
- Coordination of resources and actions
- Crisis communication
- Performance of the contingency work – disease eradication and withdrawal of products





## Duration -timing

19-23 January 2015  
8.00-20.00 hr

19-21 January 2015  
Day 1-3 in outbreak

21-23 January 2015  
Day 14-15 ~ 5-6 February 2015





# Participants

Ministry for Food, Agriculture and Fisheries

DVFA

DTU Veterinary Institute

Danish Emergency Management Agency (DEMA)

DEMA Regional Units

Danish National Police (DNP)

DNP Regional Units

Danish National Operative Staff

Local Contingency Staffs

Danish Agriculture and Food Council

ARLA (dairies)

DAKA A/S (rendering plants)

Danish Agro (feed)

Danish Crown (slaughterhouses)

DLG (feed)

TICAN A/S Slaughterhouses)

Danish Veterinary Association

Germany:

- Bundesministerium für Ernährung und Landwirtschaft, Bonn

- Ministerium für Landwirtschaft, Umwelt und ländlichen Raum des Landes Schleswig-Holstein, Kiel





# Mass media - internet

"Crisis paper.dk"

Internet based paper

TV broadcasts

Closed internet site

Publication of zone maps

Publication of specific executive orders





## Other elements

### CVET mission

- Mission took place 20-21 January (day 2-3)
  - Introductory meeting DVFA central office
  - Field visit at FMD infected herd (no lab. visit)
  - Final meeting DVFA central office

### NOST (Danish National Operative Staff)

- National crisis organisation
  - Military and police intelligence service, national police, military forces, DEMO, health authorities, Ministry of Foreign affairs
  - Coordination of intervention of different "forces"





## Implementation - central level

### Central crisis centre:

- Establish central crisis organisation
  - Central administrative staff
  - Epidemiology and central husbandry register
  - Information
  - Movement and withdrawal of ABP's
  - Service
  - Withdrawal of meat and meat products etc.

### Exercise planning group

Acted as all external partners: EU, OIE, Embassies etc.







# Implementation - LVU

## Suspicious:

DVFA local units conducted full visits or table exercise

## Confirmed cases:

Valuation of animals

All preparations for culling of herds (management, staff, material) or table exercise

All collaborative partners should be involved

## Local crisis centres:

Establish crisis management in local crisis centre



# Default strategy day 1 in Denmark

- Stand-still for all animal transports for 72 hours (cattle, pigs, sheep, goats and horses)
- Culling of infected herds
- Zones
- Visit on all herds within zones within 7 days
- Total stop of exports for live animals (cattle, sheep, goats and pigs) for a longer period.
- What is needed to follow this strategy from day 1?





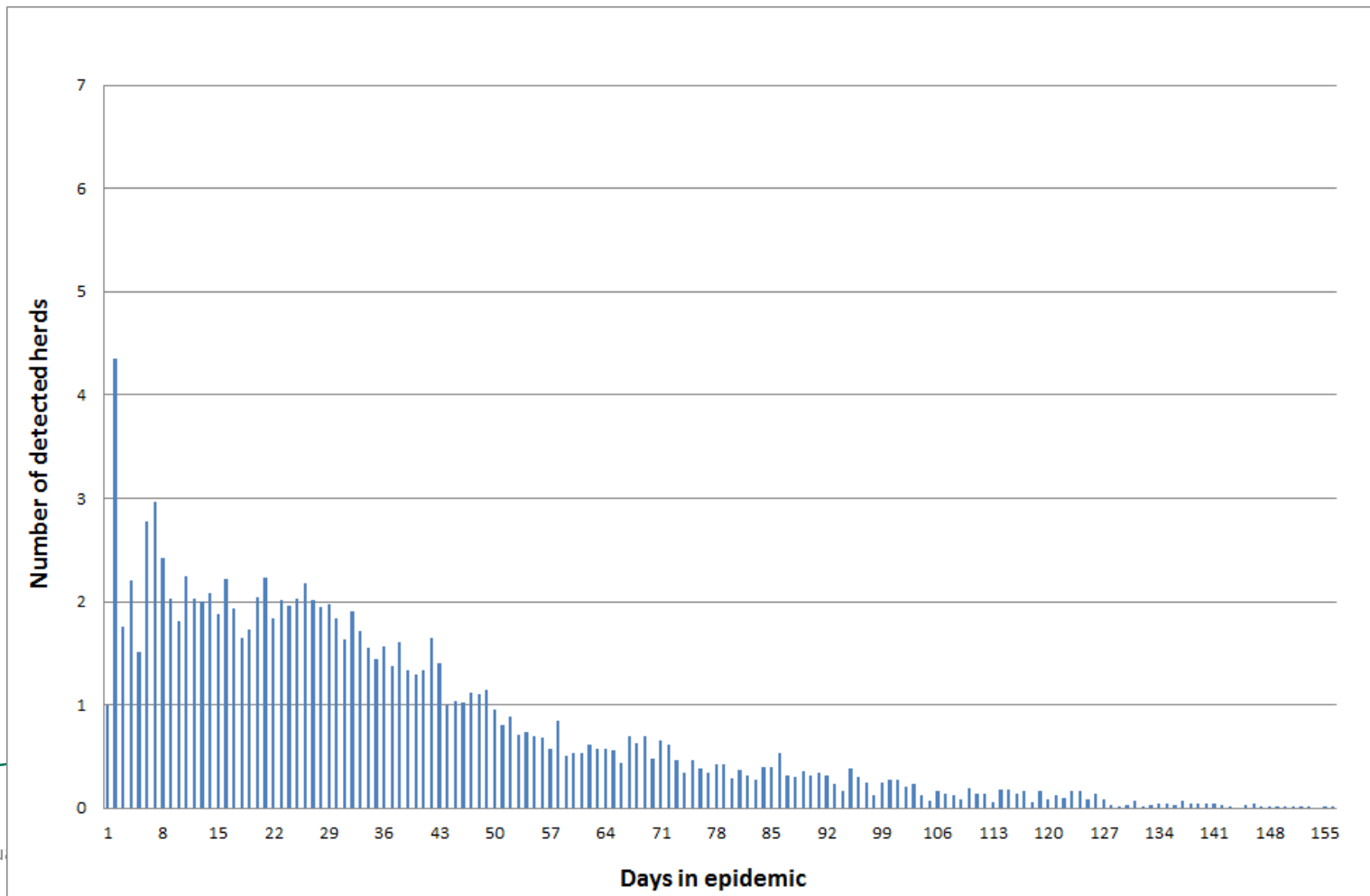
# FMD scaling model – Excel spreadsheet

- Input from scaling model
- Calculation of need of staff and material to:
  - Valuation of animals to be culled
  - Hygiene barriers at infected premises
  - Culling of animals
  - Disposal of animals
  - Cleaning and disinfection
  - Sampling
  - Visit of herds in zones
  - Screening
  - Vaccination
  - Need for equipment



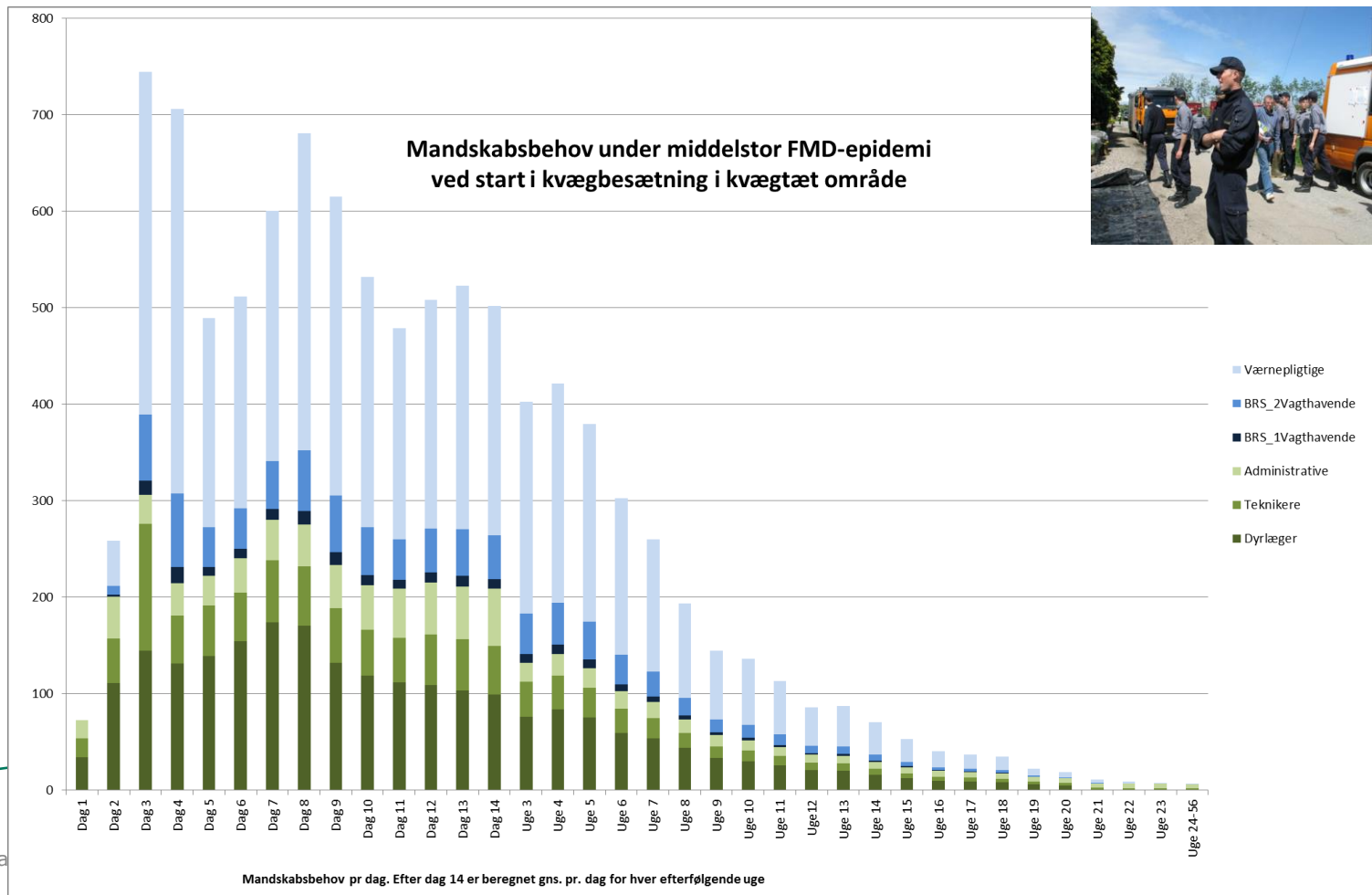


# Simulation of medium FMD outbreak





# Personnel -medium FMD outbreak





# Preparation of action





# Staff cleaning and disinfection point

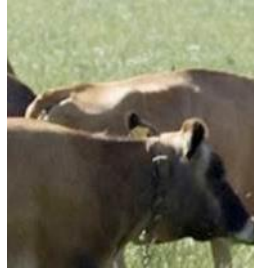




# Vehicle cleaning and disinfection point







# Scenario after eight outbreaks





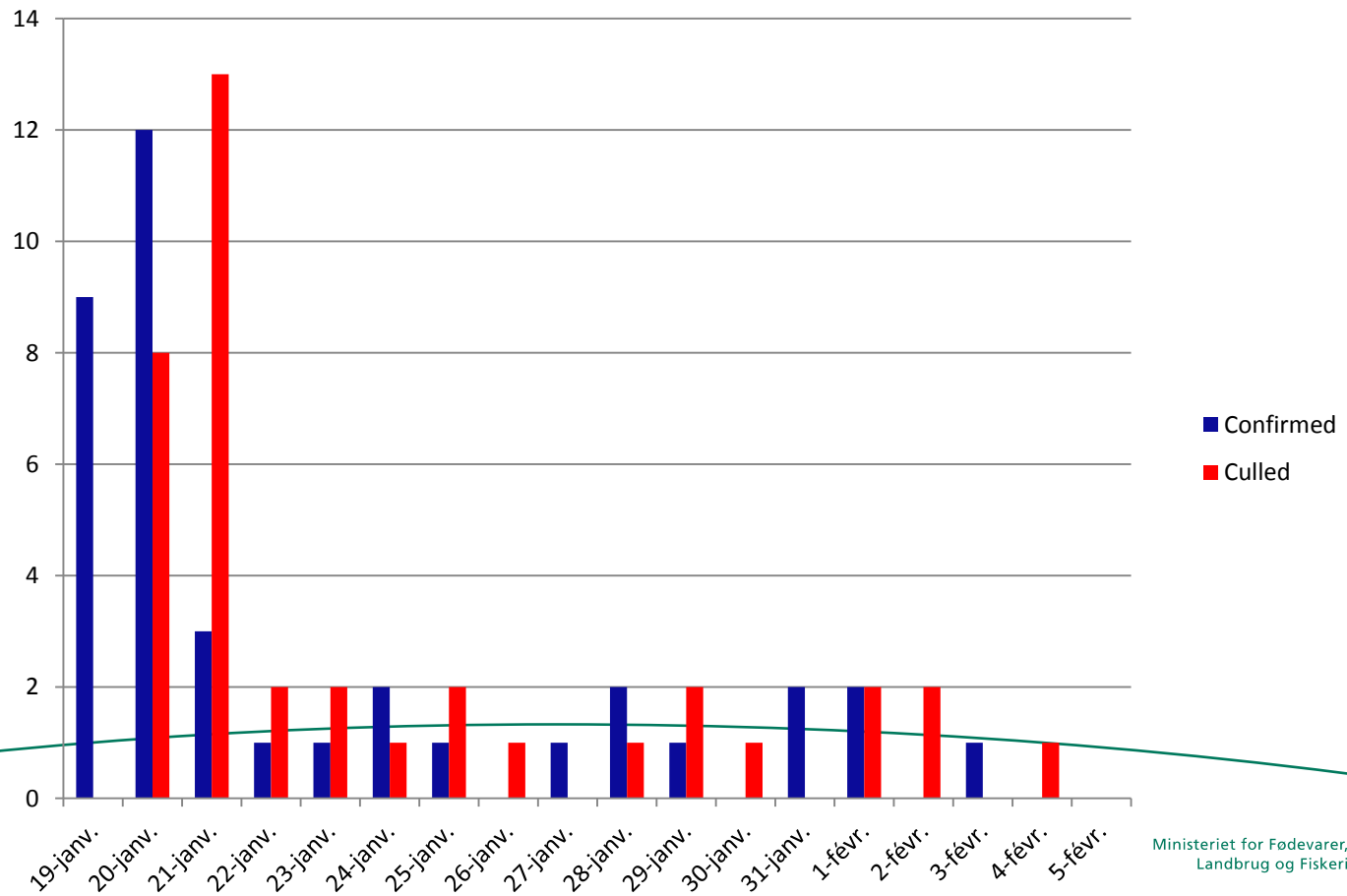
# Data on the first 20 outbreaks

Outbreak	Species	No	CHR
2015/1	Cattle	398	13704
2015/2	Pigs	4470	45000
2015/3	Pigs	1200	103182
2015/4	Cattle	1283	39367
2015/5	Pigs	1350	99352
2015/6	Pigs	6200	98989
2015/7	Pigs	3500	20767
2015/8	Pigs	2175	53169
2015/9	Cattle	553	59108
2015/10	Cattle	138	39161

Outbreak	Species	No	CHR
2015/11	Sheep	4	32003
	Cattle	375	
2015/12	Cattle	1178	11770
2015/13	Sheep	217	13670
2015/14	Cattle	912	60894
2015/15	Pigs	1525	59088
2015/16	Deer	10	82269
2015/17	Cattle	10	51247
2015/18	Cattle	692	51264
2015/19	Cattle	273	49738
2015/20	Pigs*	60	59088

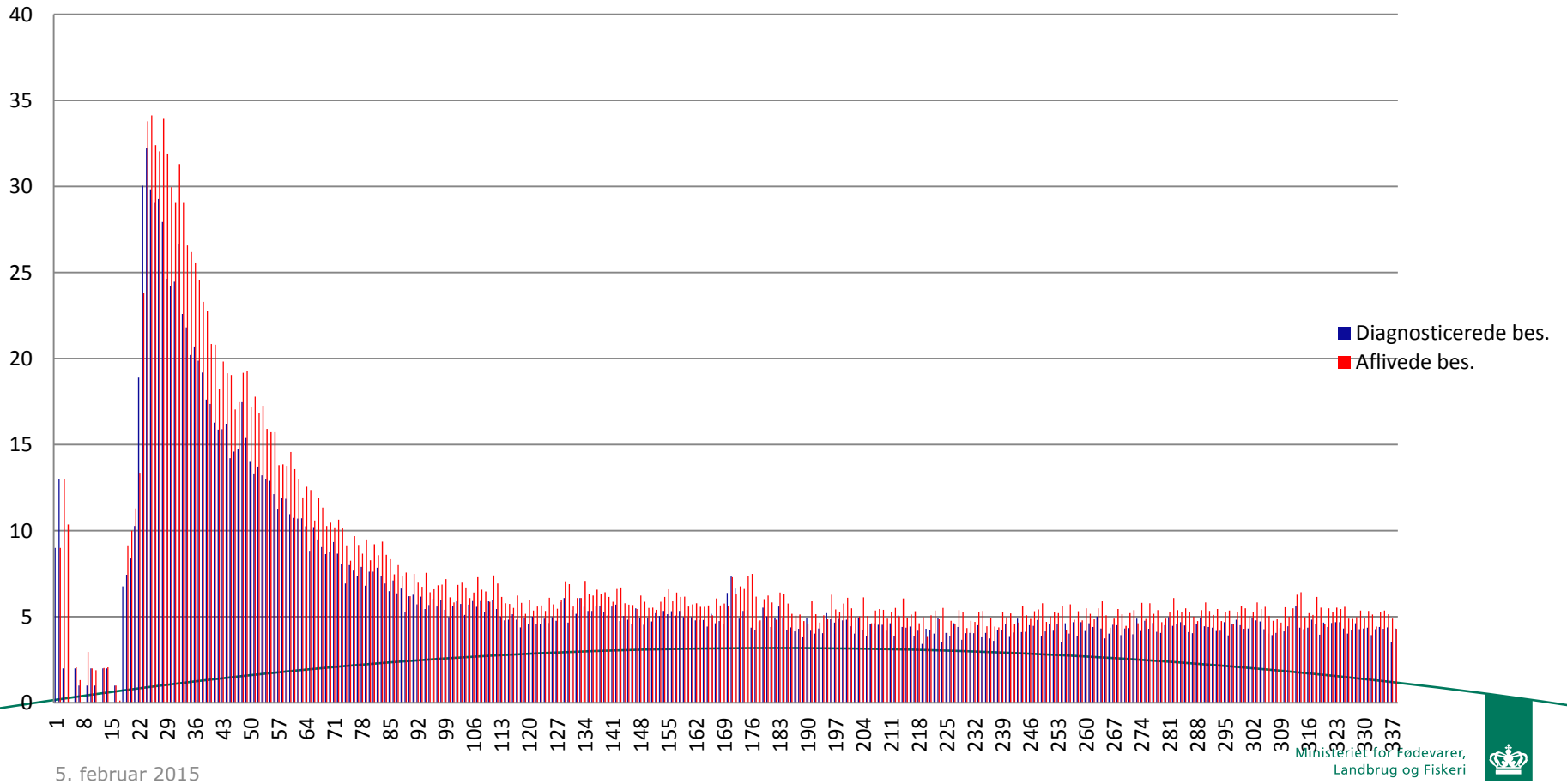


# Scenario





# No of affected herds – simulation of scenario





# Unexpected challenge

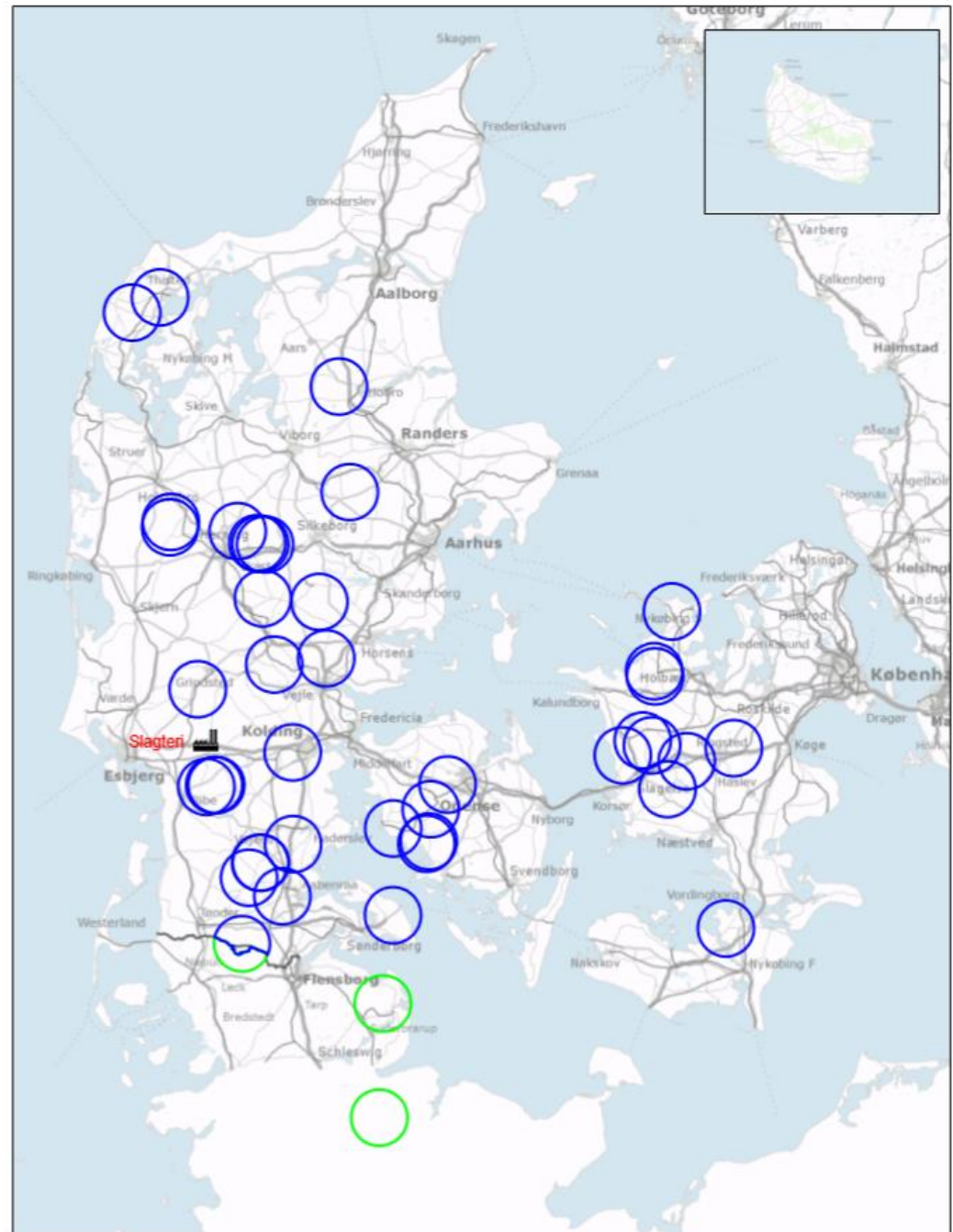
Severe outlook problems





# Final result of FMD outbreak simulation

In total 41 outbreaks in Denmark and 2 in Germany





# Withdrawal of products

Withdrawal time calculated based on:

- Age of lesions
- Double incubation time
- In total six weeks from observation of first outbreak





# Liaison officers

In order to ensure direct communication route to foreign authorities and stakeholders

Liaison officers from:

- Bundesministerium für Ernährung und Landwirtschaft, Bonn
- Danish Agriculture and Food Council
- (Ministry of Food, Agriculture and Fisheries)







# Experiences obtained during exercise

## Mobilization of staff

- DVFA central level
- DVFA decentral level
- DEMA to assist in culling – up to 12 teams/day
- From slaughterhouses
- From Danish Agriculture and Food Council

Establish crisis meeting structure

Preparing crisis organisation for long lasting crisis

More than 300 persons engaged during exercise

Evaluation report Summer 2015

Excellent team building project

