

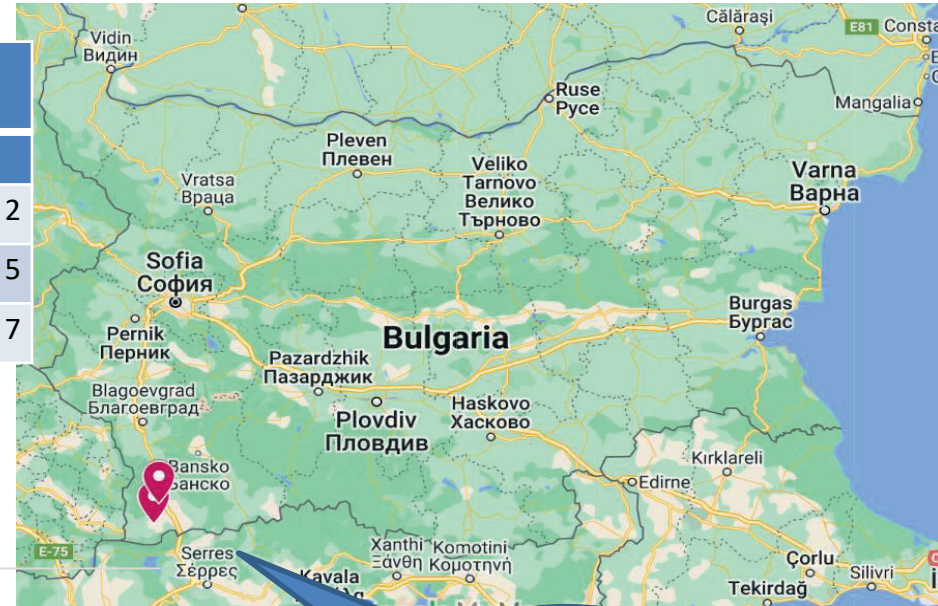
African Swine Fever situation in Bulgaria

SCoPAFF, 21.10.2022

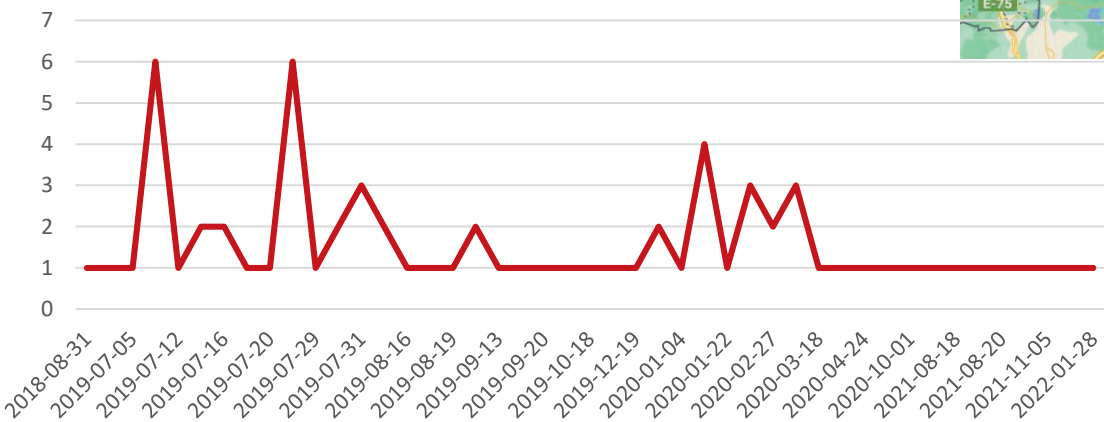


Overview of the situation in 2022 (update as by 20.10.2022) – domestic pigs

Region	Date	Holding category	No. of pigs affected
2022			
1 Blagoevgrad	14.01.2022	Unidentified	2
2 Blagoevgrad	27.01.2022	Backyard	5
Total in 2022			7

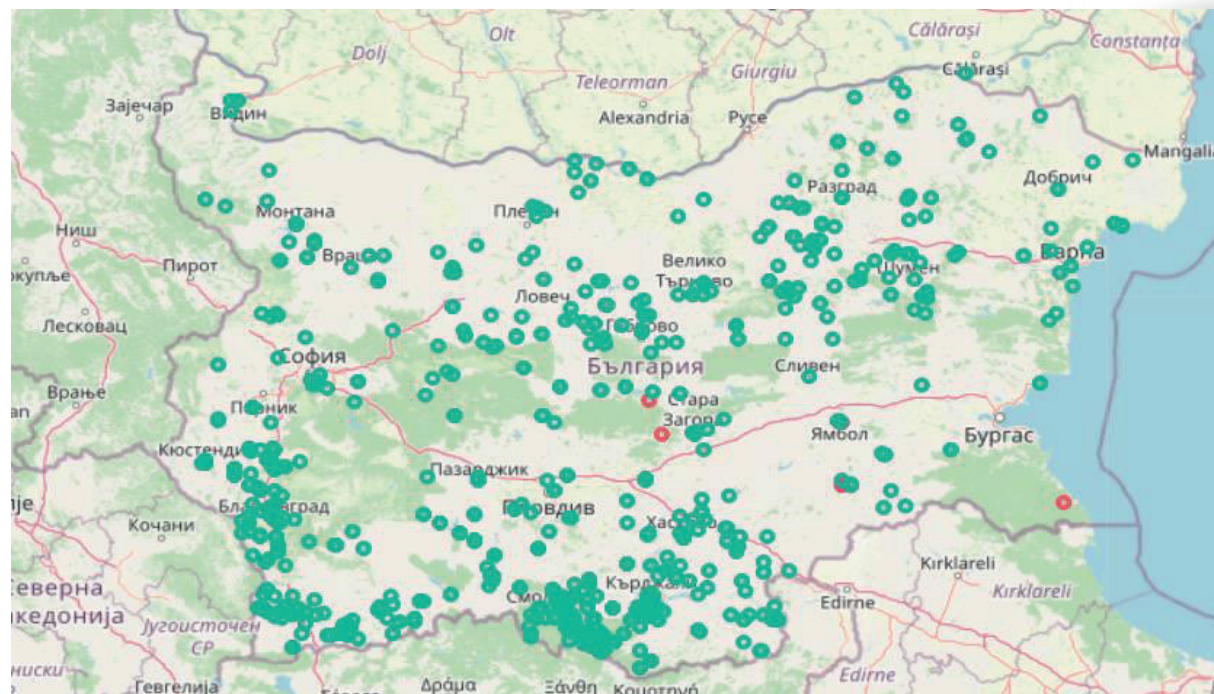


One affected region in 2022



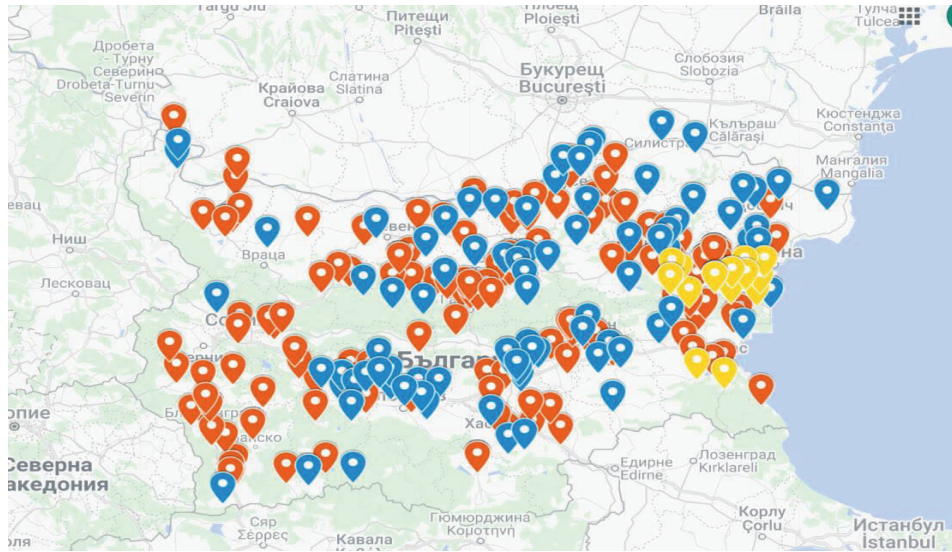
Dynamic of the epidemiological situation of ASF in domestic pig in Bulgaria, 2018-2022

Overview of the situation in BG since 02.10.2022 to 20.10.2022 in wild boar (start of the hunting season)

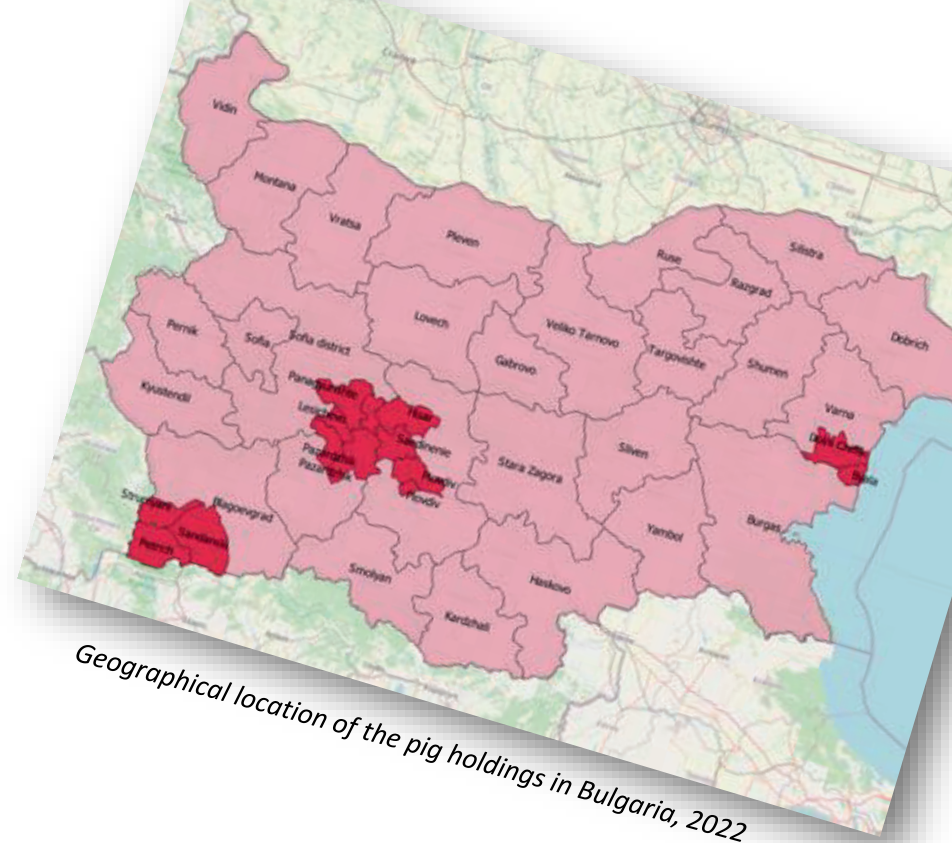


PCR tested WB in passive surveillance	PCR pos WB in passive surveillance	% positive WB in passive surveillance	PCR tested WB in active surveillance	PCR pos WB in active surveillance	% positive WB in active surveillance	ELISA tested WB in passive surveillance	ELISA + tested WB in passive surveillance	% positive WB in active surveillance	ELISA tested WB in active surveillance	ELISA pos WB in active surveillance	% positive WB in active surveillance
3	0	0%	1244	0	0%	1	0	0%	769	35	4,55%

Surveillance in domestic pigs



High risk zones in Bulgaria, according to the Annex of Reg 2021/605



Geographical location of the pig holdings in Bulgaria, 2022

Pig holdings per category , 2022

Holding category	Farms, n	Pigs, n	Number of holdings in higher-risk zones	Number of pigs in higher-risk zones
Industrial farms	98	553134	15 (15%)	36645(6,6%)
Family farms	199	7859	13 (6,5%)	423(5,4%)
EBP	29	517	7	0
Total	326	561410	35	400835

Surveillance in pig holdings , Jan-June 2022

Region	Holding category	No. of official visits	No. of samples - passive surveillance	No. of samples - active surveillance
BG	Industrial/ Family farms	483	7616	3963

Summary/conclusion:

- No outbreaks in domestic pig population since Jan 2022.
- No dynamics in the north part of BG since Oct 2020
- The main risks stay with the non-commercial farms or EBPs which do not have impact on the main live pig/pig products trading patterns.
- The measures applied with regard to the commercial farms are currently well understood by operators and are prerequisite for overall improvement of the pig sector in terms of disease prevention and early detection.
- Enforced campaign with local governors and mayors for inventory
- Enhanced official biosecurity check in high risk zones
- Awareness campaigns for hunters

Thank you!



Animal Health Department

tel.: 00359 2 915 98 42

e_mail: ahw@bfsa.bg;

<http://babh.government.bg/bg/Page/ah/index/ah/3>

[дравеопаз](#)