



REPUBLIC OF ESTONIA
AGRICULTURE AND FOOD BOARD

ASF in Estonia – Update

22 September 2021, PAFF Committee

Estonian Agriculture and Food Board

ASF in wild boars 2021(1)

- ASF surveillance results 2014-2021 (31.08.2021)

	2014		2015		2016		2017		2018		2019		2020		2021	
	No of animals tested	No ASF positive/ Prevalence	No of animals tested	No ASF positive/ Prevalence	No of animals tested	No ASF positive/ Prevalence	No of animals tested	No ASF positive/ Prevalence	No of animals tested	No ASF positive/ Prevalence	No of animals tested	No ASF positive/ Prevalence	No of animals tested	No ASF positive/ Prevalence	No of animals tested	No ASF positive/ Prevalence
Hunted wild boars	879	9 (1%)	8617	680 (8%)	14976	749 (5%)	9161	565 (6,2%)	4879	565 (6,2%)	4773	82 (1,72%)	7252	63 (0,87%)	6536	44 (0,67%)
Found dead wild boars	175	64 (37%)	928	408 (44%)	987	818 (83%)	372	299 (80,4%)	52	299 (80,4%)	26	2 (7,6%)	30	13 (43,3%)	42	11 (26,2%)
Culled/car accident	2	0	17	7 (41%)	15	5 (33)	41	3 (7,3%)	41	3 (7,3%)	37	0	45	0	17	0
Total	1056	73 (7%)	9562	1095 (11,5%)	15978	1572 (10%)	9574	867 (9,1)	9574	867 (9,1%)	4836	84 (1,74%)	7327	77 (1,05%)	6595	55 (0,83%)

ASF in wild boars 2021(2)

ASF testing in wild boar in 2021(as of

County	Total number of tested WB	From which			No of ASF positive animals		
		Found dead	Hunted	Culled	PCR	Serologica l	PCR+sero -logical
Harju	490	12	473	5	7	3	
Hiiu	709	1	708				
Ida-Viru	268	3	264	1		2	
Jõgeva	267	2	265			3	
Järva	317	1	315	1		2	
Lääne	205		204	1			
Lääne-Viru	325	3	321	1	3	8	1
Põlva	246	1	243	2		3	
Pärnu	629	8	619	2		1	
Rapla	312		312		3	4	2
Saare	1127		1127			6	
Tartu	403	9	392	2		7	
Valga	277		277				
Viljandi	587	1	584	2		6	
Võru	433	1	432				
TOTAL	6595	42	6536	17	13	45	3

ASF in wild boars 2021(3)

SAK leiud metssigadel

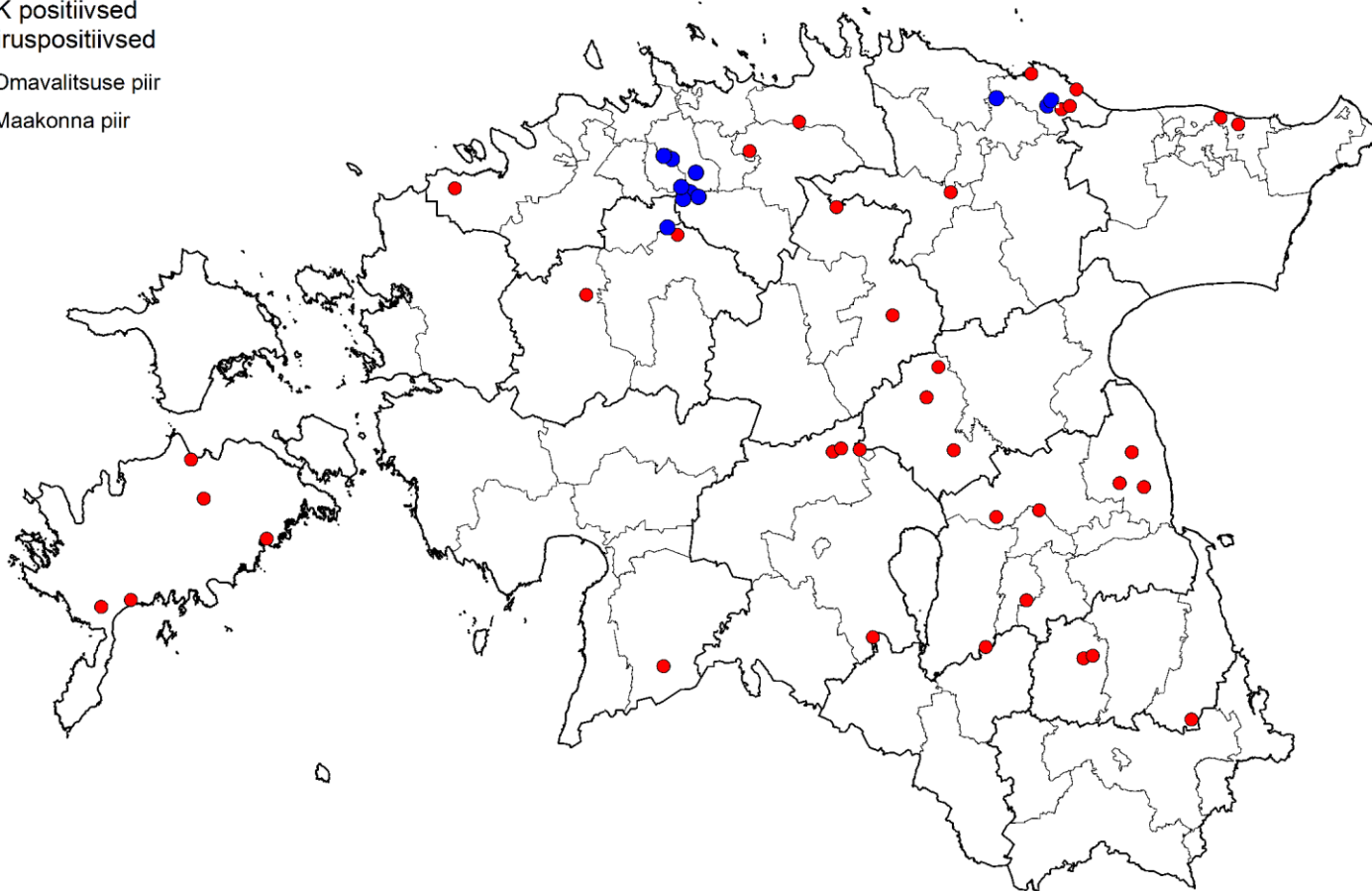
Jaanuar-august 2021

● AK positiivsed

● viiruspositiivsed

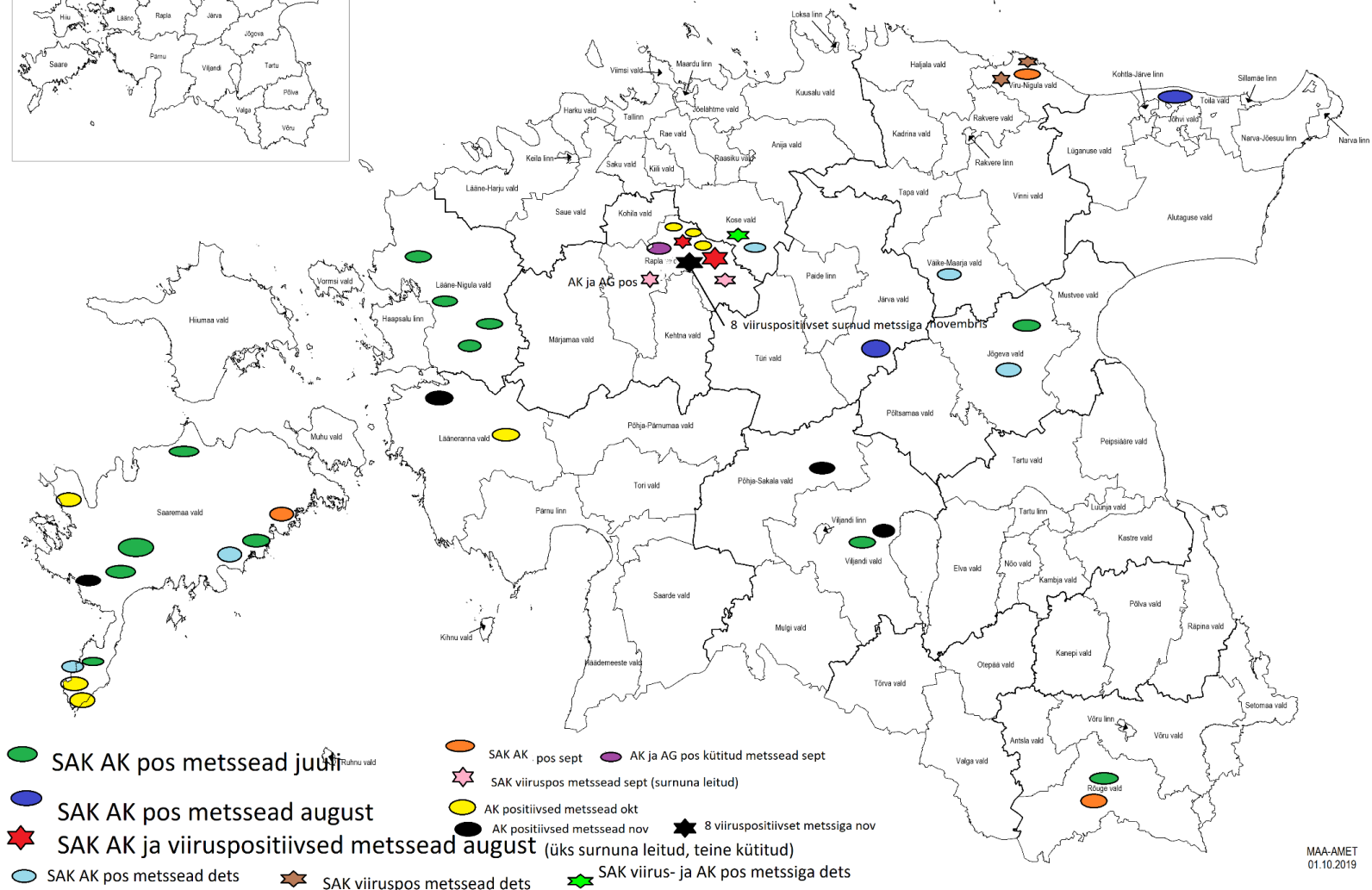
□ Omavalitsuse piir

□ Maakonna piir

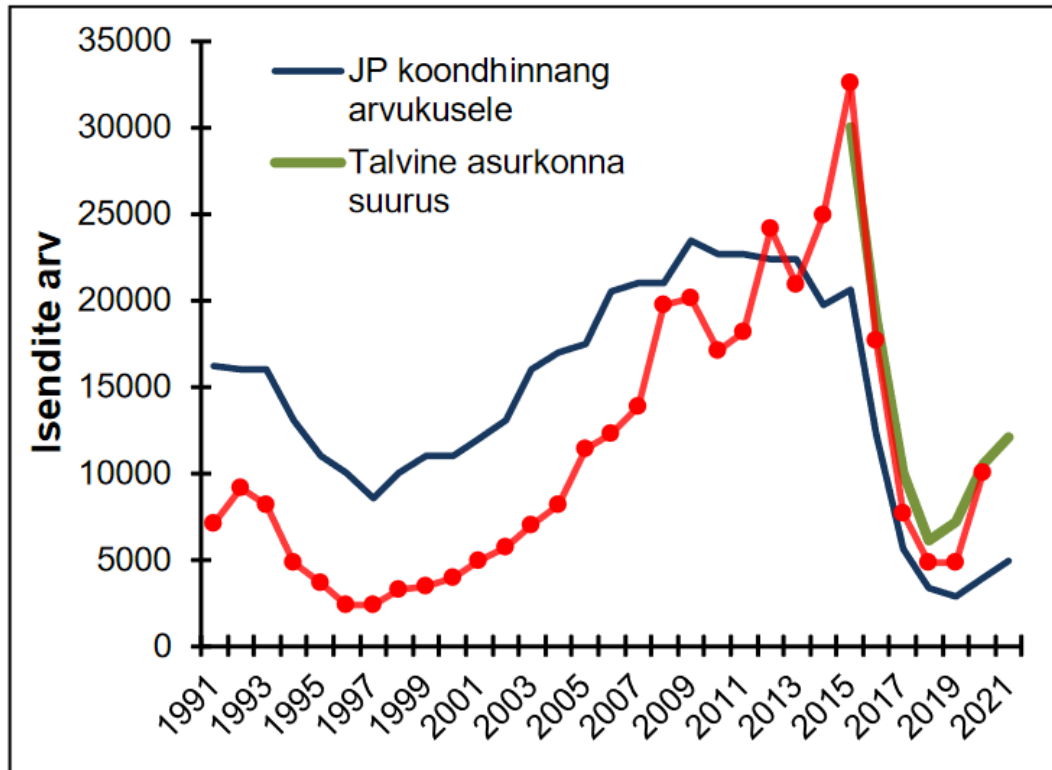


ASF in wild boars 2020

SAK positiivsed metssead II poolaasta 2020



Wild boar population 2021



green line – wintering population size estimated by Estonian Environment Agency;

blue line – based on estimates given by the users of hunting districts

red line – number of hunted wild boars

ASF in domestic pigs 2021

Outbreak (1)

Chronology

- 10.07.2021 – farm worker called to director of the farm about one sow who had bleeding nose and one sow who had abortion (in same pen)
- 11.07.2021- two pregnant sows died in the same pen. Blood samples sent to laboratory in **frames of passive surveillance**
- 12.07.2021 – two sows had stillbirths
- 14.07.2021 – confirmation of ASF on 2 sows. Additional organ samples from 6 dead sows
- 15.07.2021 – epidemiological investigation by university

ASF in domestic pigs 2021 Outbreak (2)

Information of the farm

- Full-cycle farm with 1769 pigs (boars, sows, piglets, fattening pigs)
- All pigs kept inside, area fenced
- All required biosecurity measures were implemented, some shortcomings of implementation were observed (eg disinfection mat was not protected from climate – fast drying during summer; mesh size of the net blocked by rodents and birds to enter the building)

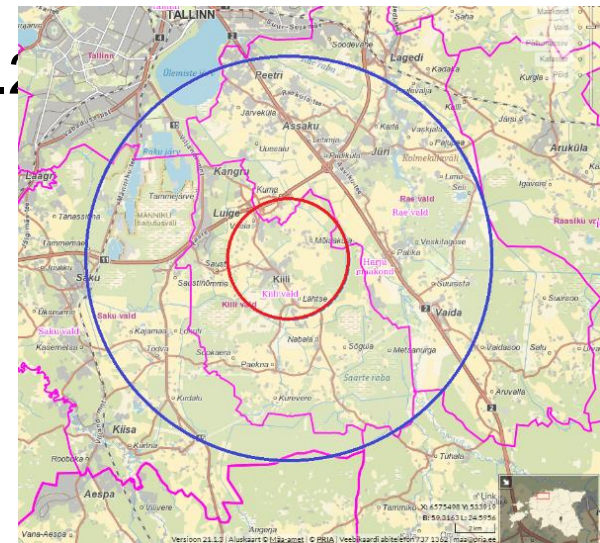


ASF in domestic pigs 2021

Outbreak (3)

Measures implemented

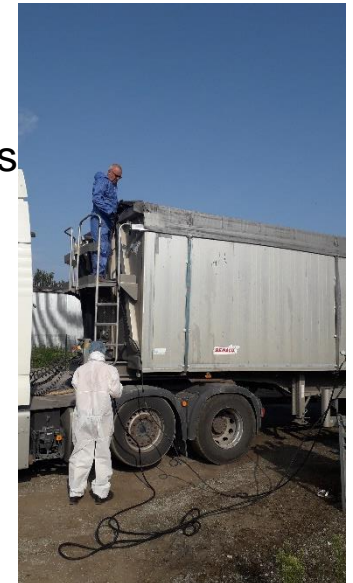
- Commission Delegated Regulation (EU) 2020/687 of 17 December 2019 supplementing Regulation (EU) 2016/429 of the European Parliament and the Council, as regards rules for the prevention and control of certain listed
- Culling 16. -17.07.2021
- Final cleaning and disinfection finished on 13.08.2021
- Quarantine in the farm was lifted on 13.09.2021
- Zones remain until 30.09.2021



ASF in domestic pigs 2021 Outbreak (4)

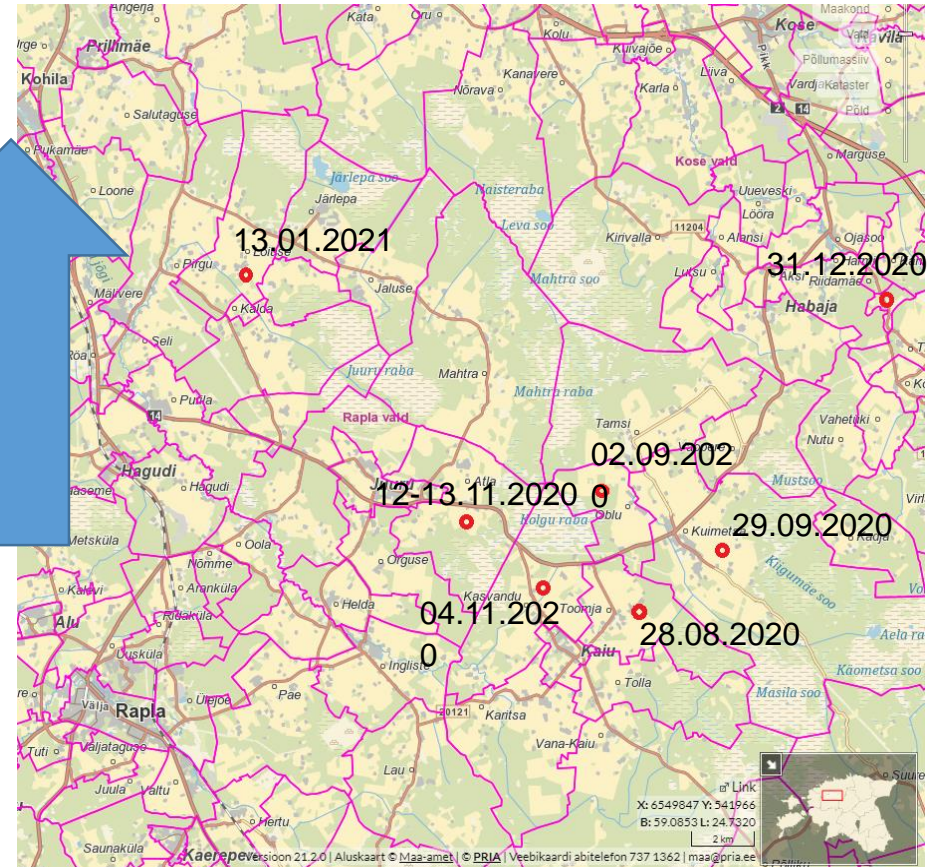
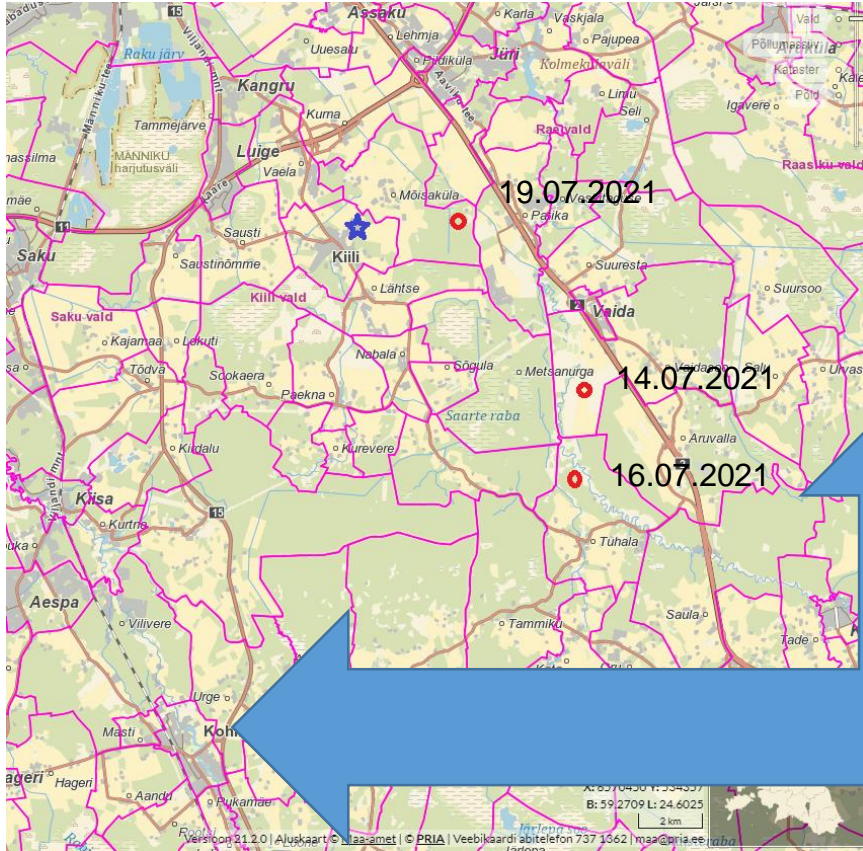
Outcome from epidemiological investigation

- Before the outbreak no ASF positive wild boars in the area
 - On the confirmation day on 14.07.2021, ASF was confirmed on one found dead wild boar 9 km from the outbreak. On the following days ASF was confirmed on 7 dead wild boar
-
- ASF has been in wild boar at least in June already
 - Probably ASF spread from wild boars diagnosed ASF positive in August



ASF in domestic pigs 2021

Outbreak (4)



ASF in domestic pigs 2021 Outbreak (5)

- Farm is situated between fields and wood, so it can not be ruled out that wild boars have been near the farm
- Virus entered the farm probably via indirect route
 - Transportation
 - Humans (farm workers during in-out movement, during loading-undloading pigs)
 - Feed (farmer grows its own crops)
 - Via flies (high season of flies in July)



ASF in domestic pigs 2021 Surveillance results (as of 31.08.2021)

County	No of tests			No of tested animals	No of positive test results	
	Blood samples		Organ samples		Blood samples	Organ samples
	PC R	ELISA				
Harju	34	7	118	214	2	1
Hiiu				0		
Ida-Viru	19		43	95		
Jõgeva	58	11	92	256		
Järva	16		30	69		
Lääne			38	38		
Lääne-Viru	33	2	387	480		
Põlva	3	7	166	176		
Pärnu	35		38	128		
Rapla	37	2	127	226		
Saare	60	5	329	507		
Tartu	31	34	261	348		
Valga	6		2	12		
Viljandi	80	16	248	452		
Võru	49		91	236		
Total	461	84	1970	3237	2	1

Biosecurity checks in farms 2021

- Minimum 2 control checks per farm
- 203 controls in 129 pig farms (as of September 2021)
- Non-compliance in 6 pig farms:
 - Deficiencies in implementation of biosecurity plan
 - Record keeping
 - Identificaton
 - Feed, bedding



REPUBLIC OF ESTONIA
AGRICULTURE AND FOOD BOARD

Thank you!