



The National Sanitary Veterinary and Food Safety Authority of  
Romania

**Epidemiological situation - ASF**  
**ROMANIA**

**SCoPAFF**

**22.09.2020**





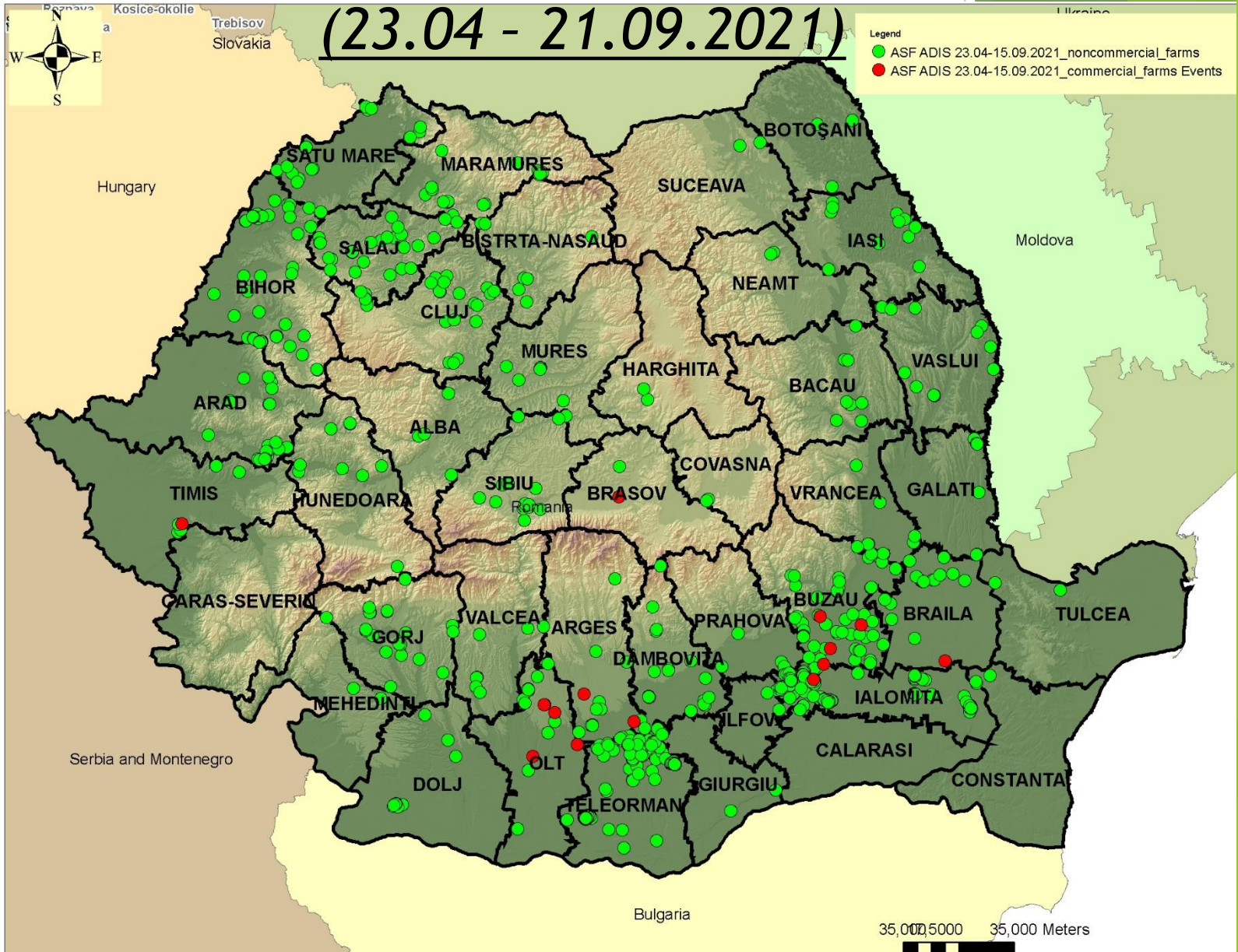
# ASF - Epidemiological situation

(23.04 - 21.09.2021)

Since last SCoPAFF presentation (23.04 - 21.09.2021)	KEPT PORCINE		WILD BOAR		
	No. of confirmed outbreaks	From which,	No. of positive cases	No. of positive found dead wild boars	No. of positive hunted wild boars
	<b>887</b>	<b>862</b> backyards <b>7</b> small commercial farms <b>18</b> big commercial farms	<b>338</b>	<b>202</b>	<b>136</b>



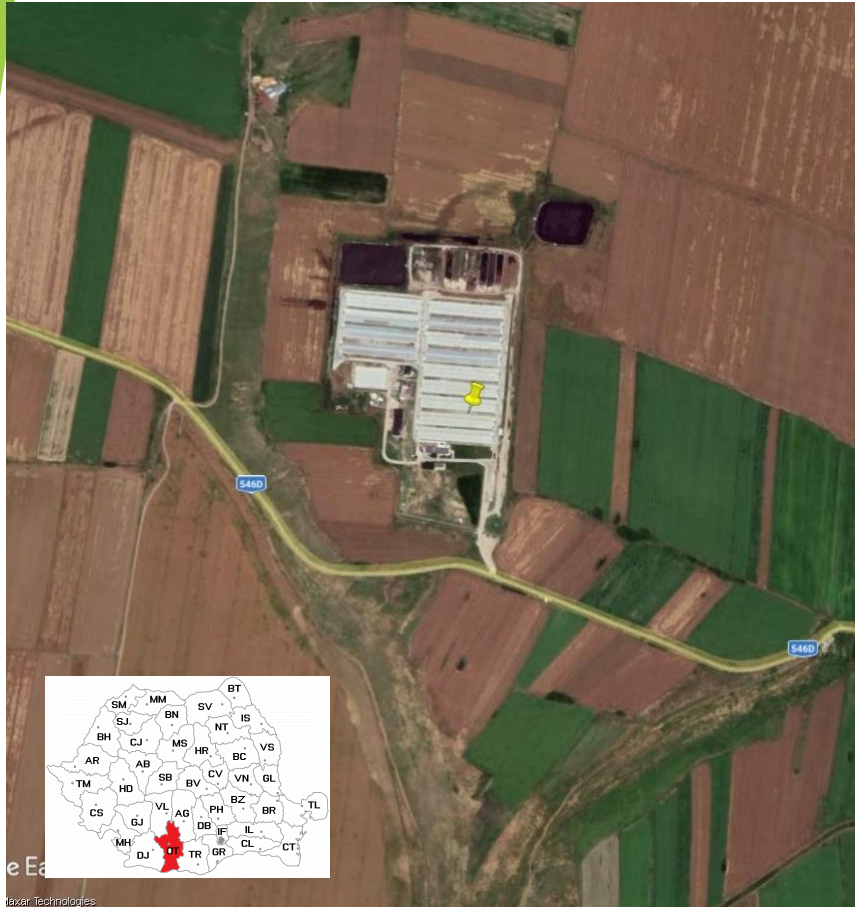
# MAP - Epidemiological situation





# Outbreaks Presentation

## LARGE COMMERCIAL FARM - OLT COUNTY

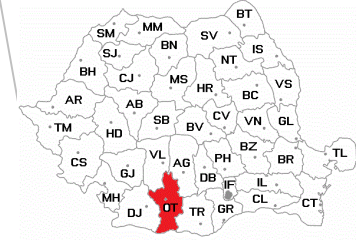


- 📍 Locality - Ipotești, OLT county
- 📍 Affected holding
  - 📍 29.933 fattening pigs
  - 📍 Suspicion - positive result on first two dead kept porcine animals over the age of 60 days
  - 📍 Confirmation on 18.08.2021
  - 📍 Not in restriction area due to backyard outbreaks
- 📍 All measures provided in the Commission Delegated Regulation (EU) 2020/687 have been implemented in the outbreaks and within the protection and surveillance zones;
- 📍 This farm was also affected in oct 2019



# Outbreaks Presentation

## TWO COMMERCIAL FARMS - OLT COUNTY



- ▶ **Primary outbreak - Affected holding no.1**
  - ▶ 1.677 pigs
  - ▶ Confirmation on 10.08.2021
- ▶ **Secondary outbreak - Affected holding no. 2**
  - ▶ 1.682 pigs
  - ▶ Confirmation on 07.09.2021
  - ▶ Possible indirect contact auxiliary staff
- ▶ **Locality - Constantinești, OLT county**
- ▶ **All measures provided in the Commission Delegated Regulation (EU) 2020/687 have been implemented in the outbreaks and within the protection and surveillance zones;**



# Outbreaks Presentation



## LARGE COMMERCIAL FARM - ARGES, COUNTY

- 📍 Locality - Slobozia, ARGES county
- 📍 Affected holding
  - 📍 27.069 pigs (breeding and fattening)
  - 📍 Suspicion - 3 dead sows with lesions 17.08.2021
  - 📍 Confirmation on 18.08.2021
- 📍 All measures provided in the Commission Delegated Regulation (EU) 2020/687 have been implemented in the outbreaks and within the protection and surveillance zones;
- 📍 This farm was also affected in febr 2020

## LARGE COMMERCIAL FARM - CĂLĂRAȘI COUNTY

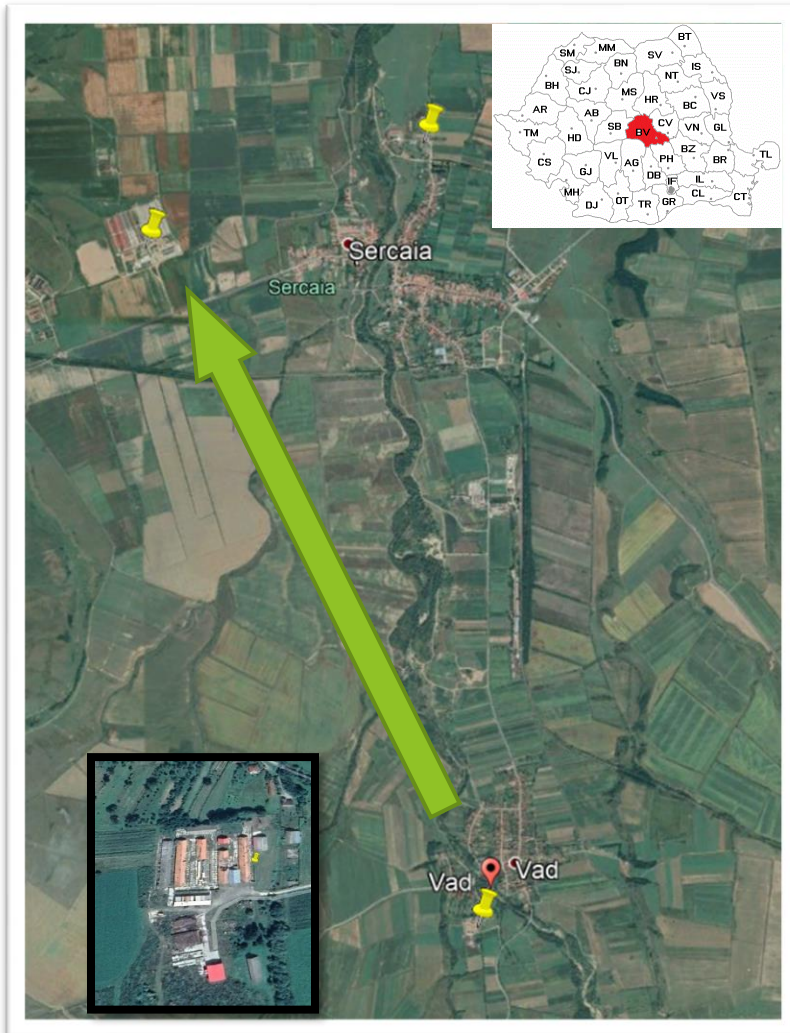


- ❓ Locality - Modelu, CĂLĂRAȘI county
- ❓ Initially empty
- ❓ Was populated with 4001 pigs, of German origin:
  - ❓ 12.08.2021 - 1949 pigs
  - ❓ 29.08.2021 - 2052 pigs
- ❓ Of these 4001 pigs:
  - ❓ 1 pig died during transport 12.08.2021 - negative
  - ❓ 1 pig died on 26.08.2021- negative
  - ❓ 1 pig died on 12.09.2021- negative
  - ❓ 1 pig died on 13.09.2021- positive
- ❓ Confirmation on 17.09.2021
- ❓ Possible contamination during transport, debarkation



# Outbreaks Presentation

## EPIDEMIOLOGICAL LINK - TWO COMMERCIAL FARMS, BRAȘOV COUNTY



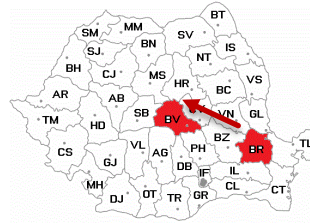
- ▶ **Primary outbreak - Affected holding no. 1**
  - ▶ 14.366 pigs (breeding and fattening)
  - ▶ Suspicion - pregnant sows with clinical signs 31.08
  - ▶ Confirmation on 31.08.2021
  
- ▶ **Secondary outbreak - Affected holding no. 2**
  - ▶ 53.014 fattening pigs
  - ▶ Movement of pigs on 23.08.2021
  - ▶ Clinical signs beginning with 15.09.2021
  - ▶ Confirmation on 17.09.2021
  - ▶ Cause: infected pigs movement
  
- ▶ All measures provided in the Commission Delegated Regulation (EU) 2020/687 have been implemented in the outbreaks and within the protection and surveillance zones;





# Outbreaks Presentation

## EPIDEMIOLOGICAL LINK - TWO COMMERCIAL FARMS, BRĂILA - BRAȘOV



- ▶ **Primary outbreak - Brăila County**
  - ▶ 1.741 (breeding)
  - ▶ Confirmation on 21.09.2021
- ▶ All measures provided in the Commission Delegated Regulation (EU) 2020/687 have been implemented in the outbreaks and within the protection and surveillance zones.

- ▶ **Secondary outbreak - Affected holding no. 2**
  - ▶ 24.243 fattening pigs
  - ▶ Movement of pigs on 10.08, 14.09 and 15.09 = 2200 pigs from affected holding no.1
  - ▶ Clinical signs beginning with 16.09.2021
  - ▶ Confirmation on 18.09.2021
  - ▶ Cause: infected pigs movement



# Biosecurity measures - photos illustration





# Measures taken in outbreaks - photos illustration





# **NATIONAL ACTION PLAN** **FOR THE SURVEILLANCE, PREVENTION AND CONTROL** **OF AFRICAN SWINE FEVER IN ROMANIA**

- Signed by NSVFSA, sent for approval to the other ministries;
- Was validated by the General Secretary of the Government;
- Several drafts were discussed with other institutions involved (Ministry of Agriculture and Rural Development, Ministry of Environment, Water and Forests, etc.);
- In this moment is being analysed by the Ministry of Justice and the Ministry of Finance;
- Starting with september, the Parliament initiated the amendment and promotion of the Draft .



## **- KEY POINTS -** **in the most recent NSVFSA draft of the Plan**

- **Clasification:**
  - Comercial
  - Non comercial (no reproduction, no commercial trade) - This measure was not accepted in the draft promoted by the Parliament;
- **Sizing (ref. to Ministry of Health Order 119/2014, depending on conversion table in Annex II to CIR 2016/669):**
  - No running water: max 4 UVM and 10 m between neighbours
  - With running water: max 7 UVM and 10 m between neighbours
  - More UVM (commercial farms): min 50 m between neighbours
- **Establishes additional sanctions and complementary measures (animal or transport confiscation, without financial compensation)**
- **Rendering plants**
  - Commercial - contract with ABP;
  - Non-commercial - in the care of the county councils (Law no.55/2017),
- **Pig holding inspections**
  - are performed minimum once/year (NSVFSA Order)
  - counseling actions for small farmers made by veterinarians on biosecurity measures and the obligation to notify any health issue (10 conseling/month/contract vet)

The National Sanitary Veterinary and Food Safety Authority of Romania



Thank you for your attention!  
Questions?

