



# Movements between Member States of certain animals

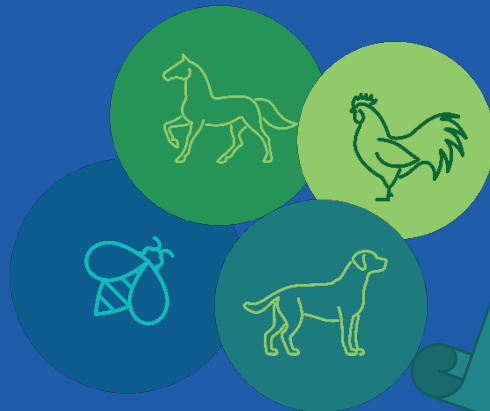
PAFF Section AHW point A.06

19-20 October 2023

*Laszlo Kuster*

*European Commission, DG SANTE*

*Unit G2 – Animal Health*



AHL Part IV,  
Title I,  
Chapter 3,  
Section 7,  
Article 143 to  
151

Delegated  
Regulation (EU)  
2020/688 Part II,  
Chapter 8,  
Articles 69-92,  
Part III, Articles  
102-103, and  
Annex VIII

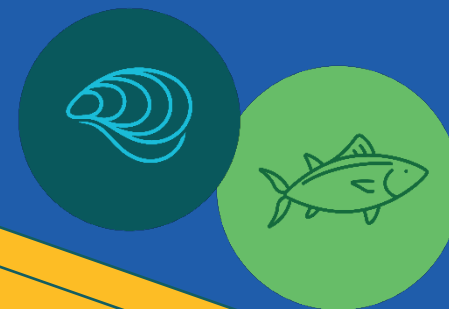
# Animal health certification



AHL Part IV,  
Title I, Chapter  
5, Section 3,  
Article 161  
and 162 and  
Section 4,  
Article 164

Delegated Regulation (EU)  
2020/686: Part III,  
Chapter 2, Articles 30 to 32  
Chapter 3, Articles 39 and 40  
Chapter 4, Article 46, and  
Annex IV

AHL Part IV,  
Title II,  
Chapter 2,  
Section 5,  
Articles 208 to  
218



Delegated  
Regulation (EU)  
2020/990  
Articles 12-16

# Situation

- Some MS frequently use a „non-harmonised” empty certificate in TRACES
- For movements between MS of certain terrestrial animals
  - Typically: rabbits, hares, rodents, hedgehogs
- For certain „other animals” (defined in Art 4(4) of AHL):
  - Typically: insects, snails, frogs, reptiles, sea mammals
- Commission received several questions on this
- Initial exchanges seem to indicate some confusion
- Justifications: „other MS required”, „operator required”, „always been like this”, „need it for the journey log”, „need it for the notification of movement”

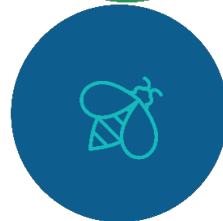
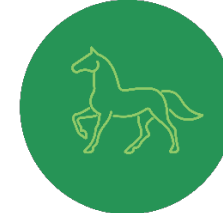
# Some rules for animal health certification

## General rules for terrestrial animals

- When required by the rules, for movements (e.g. to another MS), a consignment must be accompanied by an animal health certificate issued by the competent authority of the Member State of origin
- Article 143(1) of AHL
  - Ungulates
  - Poultry
  - Other kept terrestrial animals intended for a confined establishment
  - Other kept terrestrial animals **in accordance with delegated acts**

# Animal health certification – kept terrestrial animals continued

- Additional species (DR (EU) 2020/688):
  - captive birds, hatching eggs of captive birds,
  - honeybees, bumble bees (except from environmentally isolated establishments),
  - primates,
  - dogs, cats, ferrets, other carnivores,
- **Derogations from AHL:** registered equine animals (special agreements between MSs), travelling circuses and animal acts

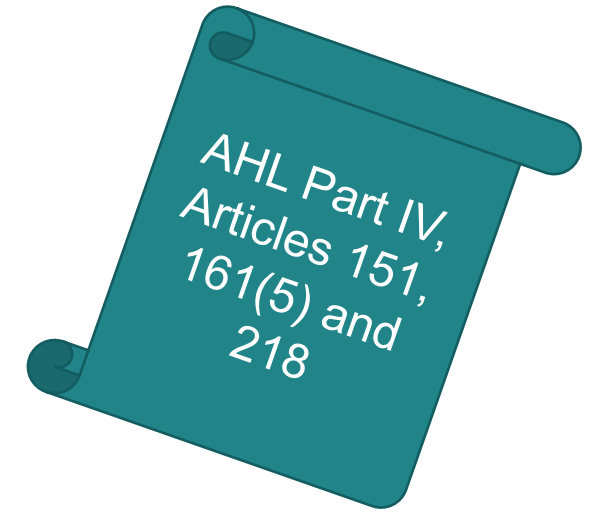


# Model animal health certificates

- Joint legal basis: AHL and Official Controls Regulation (OCR)
- Including animal health attestation and others (public health, animal welfare, residues (where required), etc.)
- Animal health attestations mirror requirements laid down in AHL and relevant delegated acts
- Model official certificates laid down in Commission Implementing Regulation (EU) 2021/403 for terrestrial animals
- All the above constitutes the obligation: which certificate to use and when?
- There is no other obligation

# Self-declaration document

- **When animal health certificate is not required:**
  - Either by AHL
  - Or by CDR (EU) 2020/688
- Issued by the operator of the place of origin
- Needs to contain certain information, including on animal health requirements
- No harmonised models laid down, only broad content in AHL
- e.g. rodents, leporidae, marsupials, etc.
- **Special:** for certain commodities self-declaration + notification



# Notification of movements

- Article 152 and 153 of AHL:
  - When animals must be accompanied by a certificate
  - When animals are granted a derogation from certificate
  - When notification is required by CDR (EU) 2020/688
- Two levels of obligations:
  - Obligation for operators other than transporters to notify the competent authority in the MS of origin of intended movement
  - Obligation for the competent authority of the MS of origin to notify the competent authority of the MS of destination
- In advance / prior to the movement
- Whenever possible through Traces
- It is automatic when certificate is signed in TRACES by the LAU of origin



# Notification without certificate

- **Special:** foreseen for the following commodities:
  - Bumble bees from environmentally isolated production establishments
  - Travelling circuses and animal acts
  - **Germinal products** of bovine, ovine, caprine, porcine or equine animals moved for processing to and from germinal product processing establishment
  - **Germinal products** intended for scientific purposes and for storage at gene banks
  - **Aquaculture animals** destined for a registered/ approved aquaculture establishment, or for release into the wild, in another MS.
  - **Aquaculture animals** Test results and date on which last samples were taken are included when moving from an establishment which is subject to a surveillance programme for a Cat C disease
- Electronic only models in TRACES

# „Other animals” (as defined by AHL)

Article 227 of AHL:

- „Where other animals are of listed species for a listed disease... one of more of the following requirements shall apply:...
- Movement requirements
- Certificaton or self-declaration...”

**BUT**

- listed species for a listed disease: Commission Implementing Regulation (EU) 2018/1882
- insects, snails, frogs, reptiles, sea mammals are not listed species
- no requirements apply

# Further food for thought

- Journey log required by Regulation (EC) No 1/2005
  - Journey log is required only for long journeys of domestic Equidae other than registered Equidae, domestic animals of bovine, ovine, caprine and porcine (reference: Art 5(4))
- TRACES
  - TRACES is an IT tool to handle any of the previous and above
  - It is possible to provide a journey log in TRACES without a certificate too
  - „Non-harmonised” certificate is a remains of the pre-AHL rules (notification)
  - No current obligation to certify beyond what is required by EU rules

# Summary

For many terrestrial species or groups or for „other animals“:

- No certification is required
- No notification
- No journey log
- „Non-harmonised“ certificate in TRACES constitutes no obligation to use it

Questions, comments?

# Next steps, contact details

- Non-harmonised certificate is planned to be discontinued in TRACES
- In the meantime: competent authorities are to follow the current EU AH rules
- Please spread this information among your colleagues and stakeholders

**If you wish, send your input to either (or both) of the following:**

- [SANTE-ANIMAL-HEALTH-LAW@ec.europa.eu](mailto:SANTE-ANIMAL-HEALTH-LAW@ec.europa.eu)
- [SANTE-CONSULT-G2@ec.europa.eu](mailto:SANTE-CONSULT-G2@ec.europa.eu)

# Thank you



© European Union 2020

Unless otherwise noted the reuse of this presentation is authorised under the [CC BY 4.0](https://creativecommons.org/licenses/by/4.0/) license. For any use or reproduction of elements that are not owned by the EU, permission may need to be sought directly from the respective right holders.

Slide <sup>14</sup>xx: [element concerned](#), source: [e.g. Fotolia.com](#); Slide xx: [element concerned](#), source: [e.g. iStock.com](#)

