

**Our vision is for a world
where no good food
goes to waste**



FoodCloud
Hungry for a kinder world

How we Rescue Food

FoodCloud connects businesses directly with charities in their communities using technology and runs the national food redistribution network in Ireland through 3 warehouses



Impact to Date



FoodCloud supports
9,500+
community groups in
Ireland and the UK

We've helped ensure the equivalent of

100M
meals

have gone to people
and not to waste

We move

56

meals every
minute 24/7



That's
over

41,999

tonnes of food
redistributed



With an estimated
value of

€126M

Approximately

134,397

tonnes of
CO₂ eq
avoided



The Impact of COVID-19

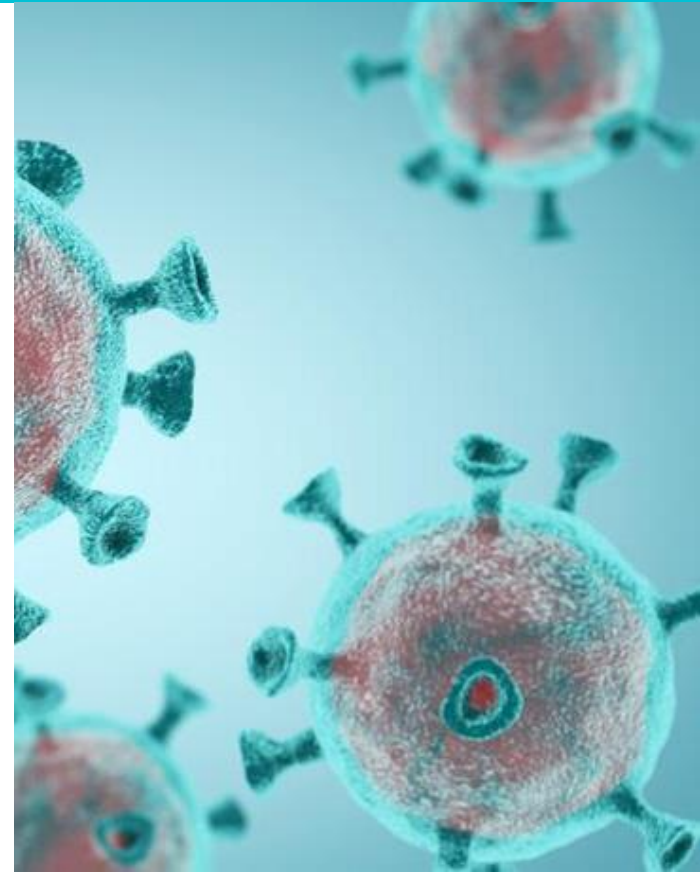


Food banks experienced an unprecedented increase in the demand for food.

Increased numbers of individuals needed help accessing food as:

- Unemployment increased
- Access to food became a challenge
- Schools closed
- Many charities who provided meals closed

65% of respondents to FoodCloud's COVID-19 Charity Survey reported an increase in demand for food as a result of the pandemic



Impact of COVID-19 on Food Waste

More waste occurring at different stages of the food supply chain



Farm level

Labour shortage due to travel restrictions. France and Germany reported farms in both nations were missing >200,000 seasonal workers, Spain reported >150,000. **Food is left in fields.**



Distribution

Delays due to travel restrictions, perishable food arrives with very short code life so it cannot go to retail outlets.



Production & manufacturing

Changes in demand in HORECA impact production; zero demand for catering pack sizes. Demand for eggs increases however in US, for example, 30% of eggs sold in liquid form. Outbreaks in processing plants impact production even where there is high demand.



Retail / Supermarkets

Changes in consumer shopping patterns and demand make forecasting very difficult and impact waste (next slide)



Food service

Closures in HORECA has widespread impact - in Q2, Coca Cola reported a 31% drop in Coffee and Tea sales, mainly due to store closure of Costa Coffee - Europe's largest coffee chain. Hospitality sector closures impact on all earlier stages of the supply chain.

The Impact of COVID-19 on Retail



Retail: Covid-19 has resulted in a significant change to how consumers shop

Less often



-22%

Fewer trips, 4.2 trips per week instead of 5.3

Bigger baskets



+45%

More items per trips, £23 per trips instead of £16

Fewer stores



-16%

Drop in store repertoire. 2.6 per week, down from 3.1

Shopping earlier



+9%

Change in shape of trade. Share of sales Mon-Thu has increased

Online Shopping

.com

+11%

Significant increase in online +11% market share

Impact on Food Banks



300k Surplus Easter Eggs



20T Surplus Turkey
(4x 2019 volumes)



Pallets of eggs for catering

Surplus arises at different stages of the food supply chain and with increasing volatility

Lessons Learned



The food chain is rigid and Food Banks have provided a flexible and agile way of rerouting surplus into the human food supply chain



Technology has been key for ensuring highly perishable food can be rapidly rescued



Redistribution only works if different parts of the supply chain work together



The ability to work with food in a variety of pack sizes and even repack and re-label is critical

Transport and labour costs for food recovery (esp at farm level) remain a challenge, UK “Surplus for Purpose Fund” is a great example of how to overcome this which should be replicated

Food banks and the charity sector provide a safety net for many of those who live on the margins of our society and are vulnerable to even smallest change in circumstances - need to ensure we provide capacity for food banks to remain agile for the future

Covid-19 continues to be a shock but will not be the last



The Washington Post

Extreme weather patterns are raising the risk of a global food crisis, and climate change will make this worse

BBC

Coronavirus leads to food industry crisis in Europe

Across Europe, much of the food and agriculture industry has been badly affected by the Covid-19 pandemic.

THE IRISH TIMES

Brexit: UK food groups race for Irish stockpiling space

Major UK brands keen to secure supply chains

The Telegraph

Last-minute Brexit deal risks supermarket turmoil

But grocers' experience of pandemic stockpiling may help them prepare for a 'harsh' exit from the EU

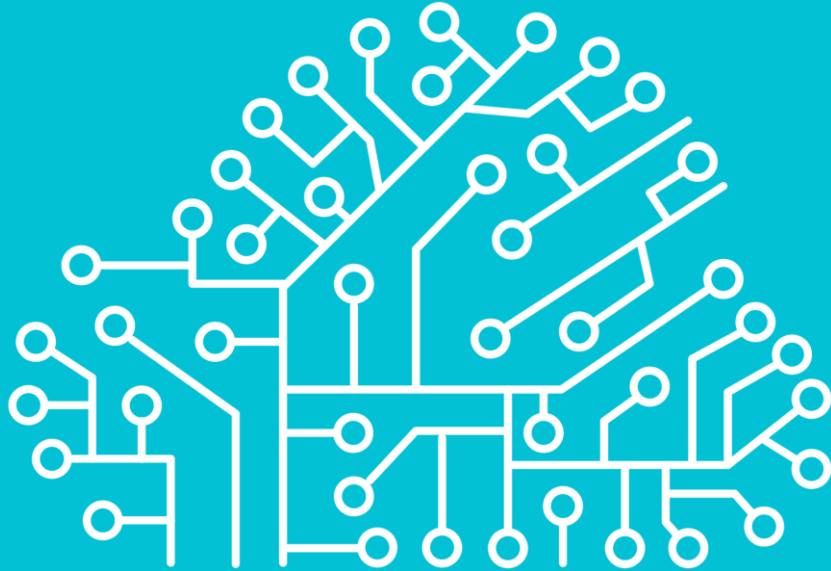
FINANCIAL TIMES

European governments scramble to find farm workers for harvest

Coronavirus brings continent's seasonal migration patterns to a halt

The New York Times

Climate Change Threatens the World's Food Supply, United Nations Warns

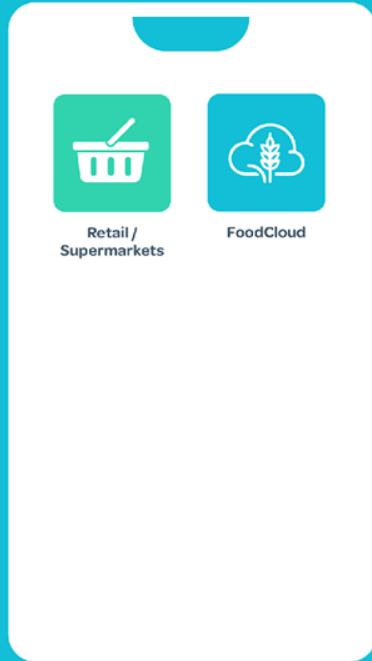


Creating a more sustainable food system

A step change in approach



FoodCloud today supports food donations from supermarkets in the UK and Ireland



The Foodiverse will bring global donation technology to the entire food supply chain and support food banks to rescue more food and support more beneficiaries



Embedding technology at all stages of the food supply chain

We have seen that using technology to support redistribution across the food supply chain can simplify redistribution and rescue highly perishable food quickly





We are launching the Foodiverse to bring food rescue technology to the entire food chain, creating a circular global food system which supports food banks to rescue more food and increase the number of people they serve



Foodiverse



FoodCloud

Hungry for a kinder world