



African swine fever in Lithuania (updated situation)

**State Food and Veterinary Service of
The Republic of Lithuania**

www.vmvt.lt

November | 2025

8 outbreaks in domestic pigs

○ 126 positive hunted wild boars

● 862 positive found dead wild boars

In total:

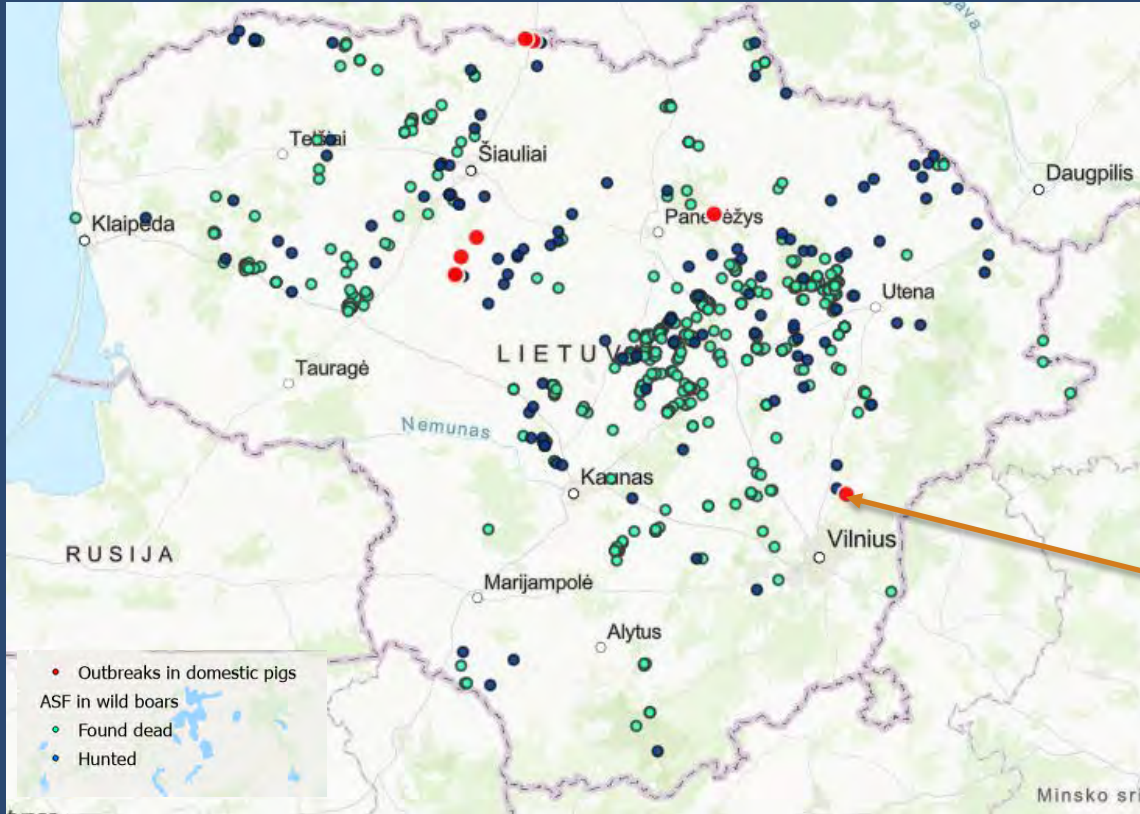
676 ADIS notifications /
988 positive wild boars

From the last PAFF

1 new outbreak in domestic pigs (commercial farm)

18 positive hunted wild boars

60 positive dead wild boars



Commercial farm, example of good biosecurity from 2014 till 2025 October



ASF outbreak in domestic pigs in 2025-10-27

ADIS No. LT-ASF-2025-00608



Pigs farm with **more than 19600** mixed groups of pigs (fattening pigs, sows, boars, piglets)

2025-10-27

- notification to SFVS of increased pig mortality
- sampling of dead pigs and temporary restrictions
- confirmation of ASF

2025-10-28

- The NDCC was activated.
- After visiting the infected farm and assessing the available resources, the pig culling method was agreed upon.
- A destruction plan was established, using both a rendering plant and an on-farm burial site.
- The necessary human and financial resources were identified.
- A company in Poland providing culling services was contacted and agreed to carry out the complete culling of the farm.
- Restriction zones around the outbreak were established.
- An epidemiological investigation was started



2025-10-28

- Meeting with municipality.
- Declaration of an emergency at the municipal level
- SMS alert within a 10 km. radius
- Tv report on the spot



Emergency alert: Extreme

The State Food and Veterinary Service (VMVT) informs:
An African swine fever case has been detected in a pig farm in Poškaičiai village, Vilnius district. Farms are urged to maintain biosecurity, carry out continuous disinfection, limit visits by outside persons, and follow hygiene rules before entering pig areas. If any changes in pig health are observed, report them to a veterinarian or the VMVT.

ASF outbreak in domestic pigs in 2025-10-27

ADIS No. LT-ASF-2025-00608

For the first time in Lithuania, pig culling was carried out with the involvement of a professional culling and disinfection service company (before this, culling procedures were carried out by official inspectors of SFVS).

The culling of pigs (6.5 days) from the confirmation of the outbreak to preliminary disinfection was carried out within 12 days.



The pigs were killed with CO2 gas in tented vehicles



Sows were culled on the farm and transported to the rendering plant for disposal.



On the second day, a pit was prepared on the farm territory for burying the pigs.

Epidemiological investigation – ongoing...



Based on the mortality records and the results of carcass and blood testing:
The disease first became evident in stable no. 7

HR period

After analyzing additional circumstances, it is likely that the virus entered the farm between October 17 and 24

		October																																
		10.28	1	2	3	4	5	6	7	8	9	10	11	12	13	14	15	16	17	18	19	20	21	22	23	24	25	26	27	28	29	30	31	
Pig species	Total pigs	Stable No.																																
Sows/Boar (9)	66	1	1																						1									
Sows/gilts	270	2																																
Sows	307	3																																
Sows	331	4																																
Piglets 0-3 month	1223	5										1																						
Fattening pigs	741	6			1	1					1	4	1	3	2	2	1	3	6	4	7	1	2	1			2	1		1	1			
Fattening pigs	1353	7	3	1	3	3	4	5	3	3	2			2	1	1	5	2	1	3	1	3	2	7	7	11	12	20	44	51				
Fattening pigs	2250	8	2					4	1		1							1	1		2	1	2				2	2	1	3				
Fattening pigs	1318	9	3	2	1	1	3	3	3	2	4	5	6	7		2	8	5	6	1	3	2	1	3	2	2	2	1		3	2			
Piglets 0-3 month	4186	10	2	3	4	3	2	4	8	4	6	10	3	4	5	15	7	6	5	3	3	5	12	4	2	10	6	5	6	11	5	1		
Piglets 0-3 men	1019	11								2	2												1											
Sows	243	12																																
Fattening pigs	1211	13	1	3		1	1	1	6	2		3	1		1	3	2	2	5		2	2				1	2	3	1	1		1		
Fattening pigs	1608	14	2	1	3	2	2	3	2	3	2	2	2	3	2	3	3	2		4		1	4	4	2	2	2	2	3	5		2		
Sow teats	256	15	9	5	3	9	11	8	8	7	8	10	5	4	4	7	10	4	9	6	5	4	10	10	8	6	13	13	5	17	18	5		
Piglets (nipples)	3047	15																																
Total	19429																																	

Hypotheses raised:

- **Human factor.** Non-compliance with biosecurity measures by farm service personnel.
 - Unauthorized entry of external (foreign) workers into the pig production territory (one of the barn roof reconstruction began 1–2 weeks before the outbreak), in high risk period.



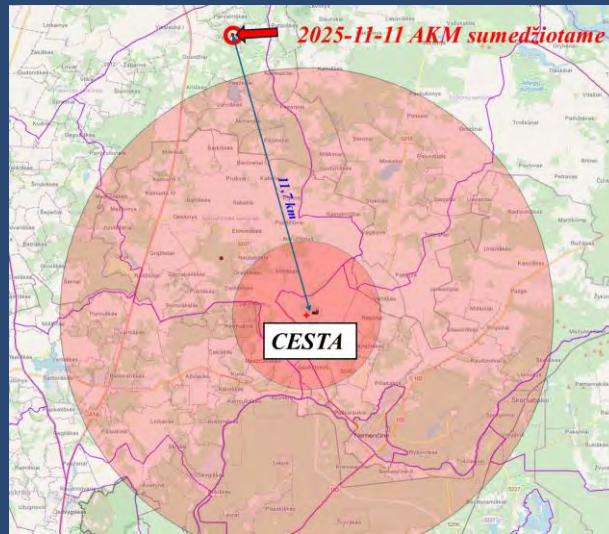
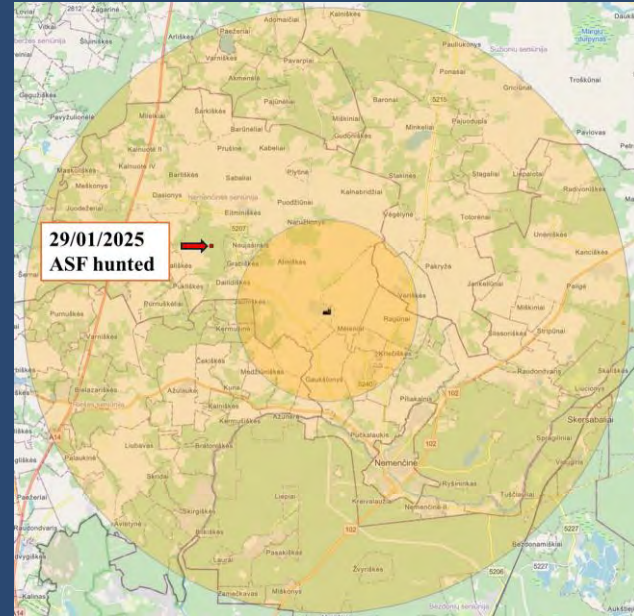
Hypotheses raised:

- **Human factor.** Non-compliance with biosecurity measures by farm service personnel.
 - Movement of construction materials and workers carrying out reconstruction through access points without disinfectants.



Hypotheses raised:

- **Impact of wild boars.** There are many ripe corn fields around the infected pig farm. According to the owner, the wild boars with poor coordination have been seen a few kilometers away.
- In autumn, **rodents** actively move from the fields into the pig housing (although there is little scientific research on their possible role in spreading ASF to pigs). The farm carries out rodent control, but dead rats and mice are still found on the premises.

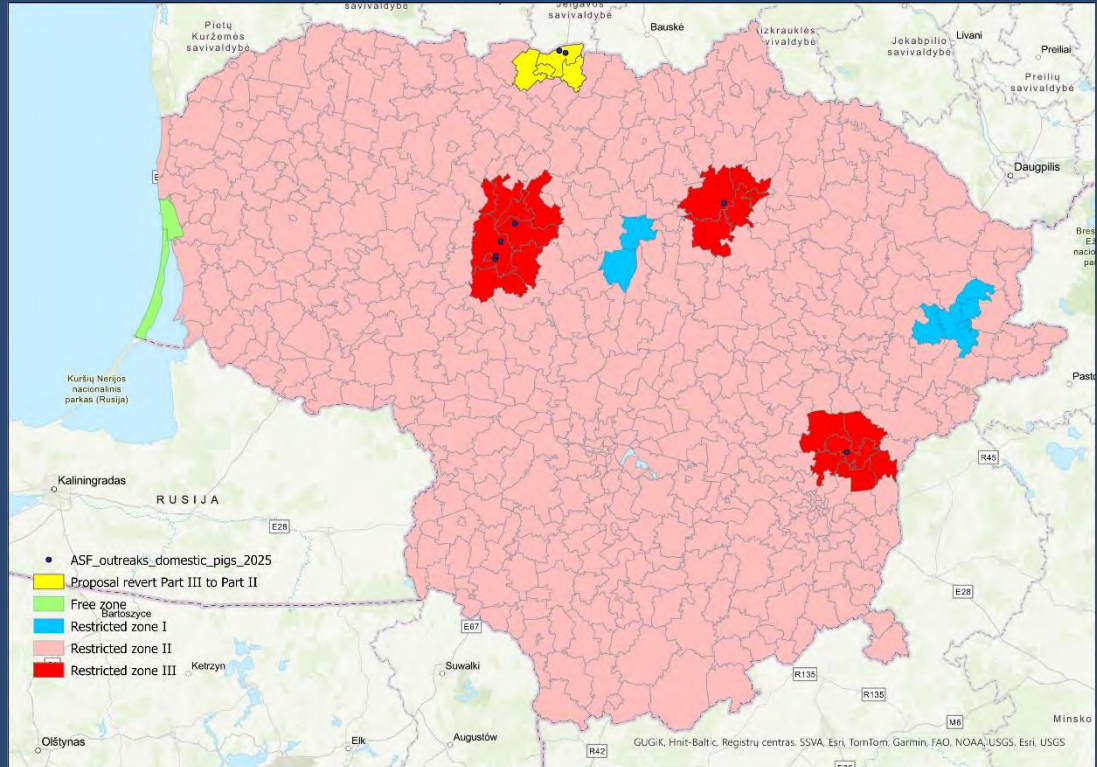


Proposal to revert RZ III to RZ II

Joniškio rajono savivaldybės: Joniškio seniūnijos šiaurinė dalis nuo 153 kelio iki E77 kelio rytinės ribos, Satkūnų, Saugėlaukio, Skaistgirio seniūnijos

Based on the Commission Delegated Regulation (EU) 2020/687 and African swine fever in the Union ('ASF guidelines') (C/2023/1504) of 18 December 2023:

- 'in the event of a single or limited ASF outbreaks clustered in space and in time (during a period of 30 days from the first outbreak in that zone) in establishments of kept porcine animals in a sufficiently large area with no ASF outbreak in kept porcine animals for the past 12 months – the three year or 12 months period referred to in point 6.1. can be reduced to 3 months'
- Passive surveillance system for establishments of kept porcine animals is implemented;
- Active and passive surveillance for wild porcine animals are implemented.





VALSTYBINĖ MAISTO IR
VETERINARIJOS TARNYBA



www.vmvt.lt