

# Aethina tumida in Italy: Update on epidemiological situation and response measures

---

Franco Mutinelli  
NRL for beekeeping

STANDING COMMITTEE ON PLANTS, ANIMALS, FOOD AND FEED  
Animal Health and Welfare

Brussels, 18 September 2017

# Epidemiological situation – September 2017



NATIONAL REFERENCE LABORATORY FOR BEEKEEPING  
**AETHINA TUMIDA CONFIRMED CASES**  
 EPIDEMIOLOGICAL SITUATION AS OF SEPTEMBER 05, 2017

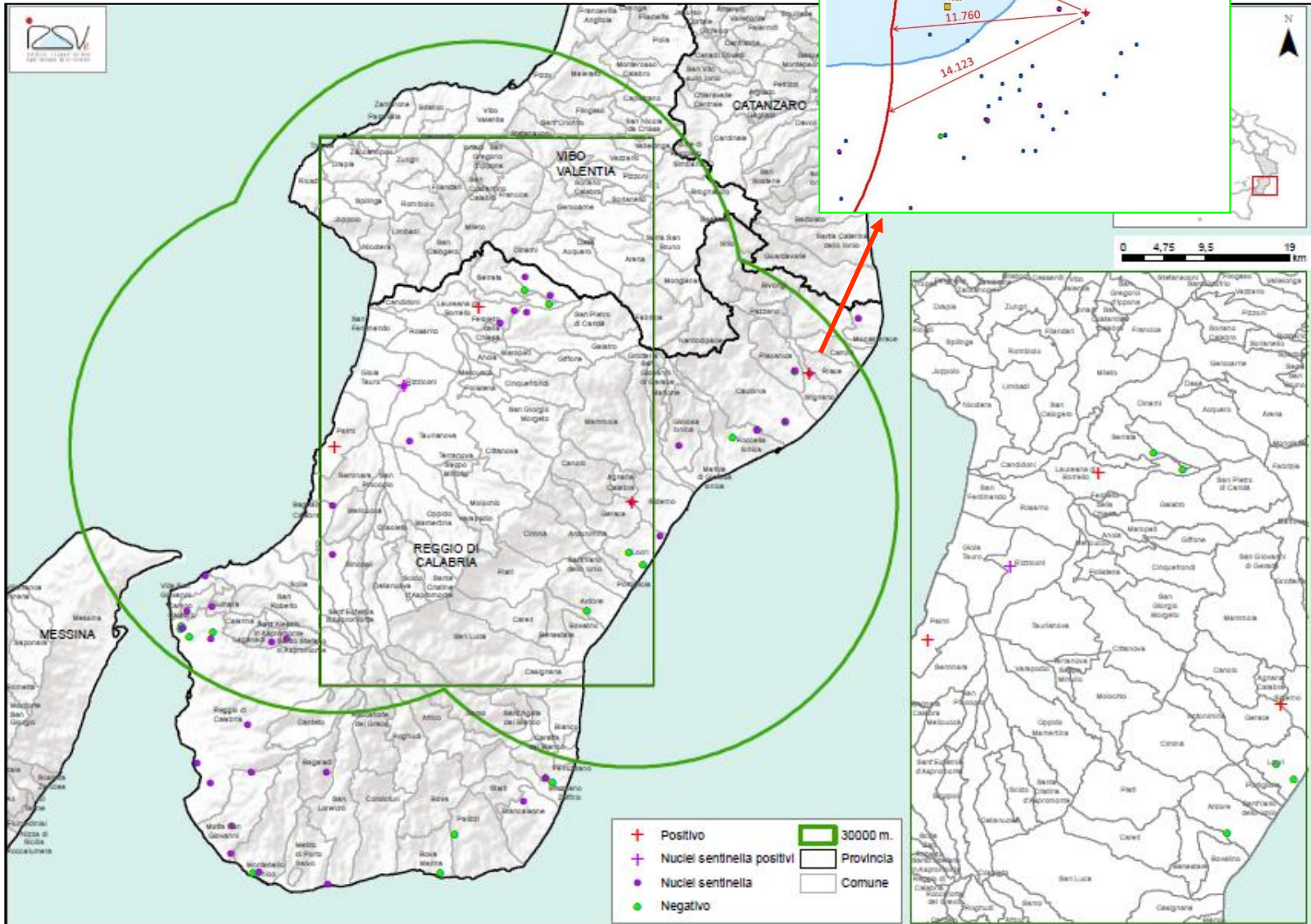
N.	LOCALITY	MUNICIPALITY	PROVINCE	REGION	EGGS	LARVAE	PUPAE	ADULTS	Note	CONFIRMATION DATE
01_2017	C.DA TRODIO	PALMI	RC	CALABRIA				30		March 24, 2017
02_2017		LAUREANA DI BORRELLO	RC	CALABRIA		Several		11	Natural colony	April 03, 2017
03_2017	C.DA MELE	SIDERNO	RC	CALABRIA		6		9		April 03, 2017
04_2017	C.DA COLTURE	STIGNANO	RC	CALABRIA				2		April 18, 2017
05_2017	VIA STRETTO	SCILLA	RC	CALABRIA				1	Natural colony	May 25, 2017



NATIONAL REFERENCE LABORATORY FOR BEEKEEPING  
**AETHINA TUMIDA - "SENTINEL HONEY BEE NUCLEI"**  
 ORDER OF THE MINISTRY OF HEALTH 0002413-01/02/2016-DGSFAF-COD\_UO-P, 0003095-08/02/2016-DGSFAF-COD\_UO-P  
 EPIDEMIOLOGICAL SITUATION AS OF 05 SEPTEMBER 2017

N.	SENTINEL HONEY BEE NUCLEI (*)	LOCALITY	MUNICIPALITY	PROVINCE	REGION	EGGS	LARVAE	PUPAE	ADULTS	Note	DATE
01_2017	N. 8	DROSI	RIZZICONI	RC	CALABRIA				22		April 03 2017
02_2017	N. 31	C.DA COLTURE	STIGNANO	RC	CALABRIA				1		June 14, 2017
03_2017	N. 17	C .DA FIUMARA ALTA	VILLA SAN GIOVANNI	RC	CALABRIA				2		June 29, 2017
04_2017	N. 6	C.DA CAMPO	SAN PIETRO IN CARIDA'	RC	CALABRIA				2		July 31, 2017
05_2017	N. 25 BIS		MAROPATI	RC	CALABRIA				3		August 02, 2017

# Stignano: April 2017

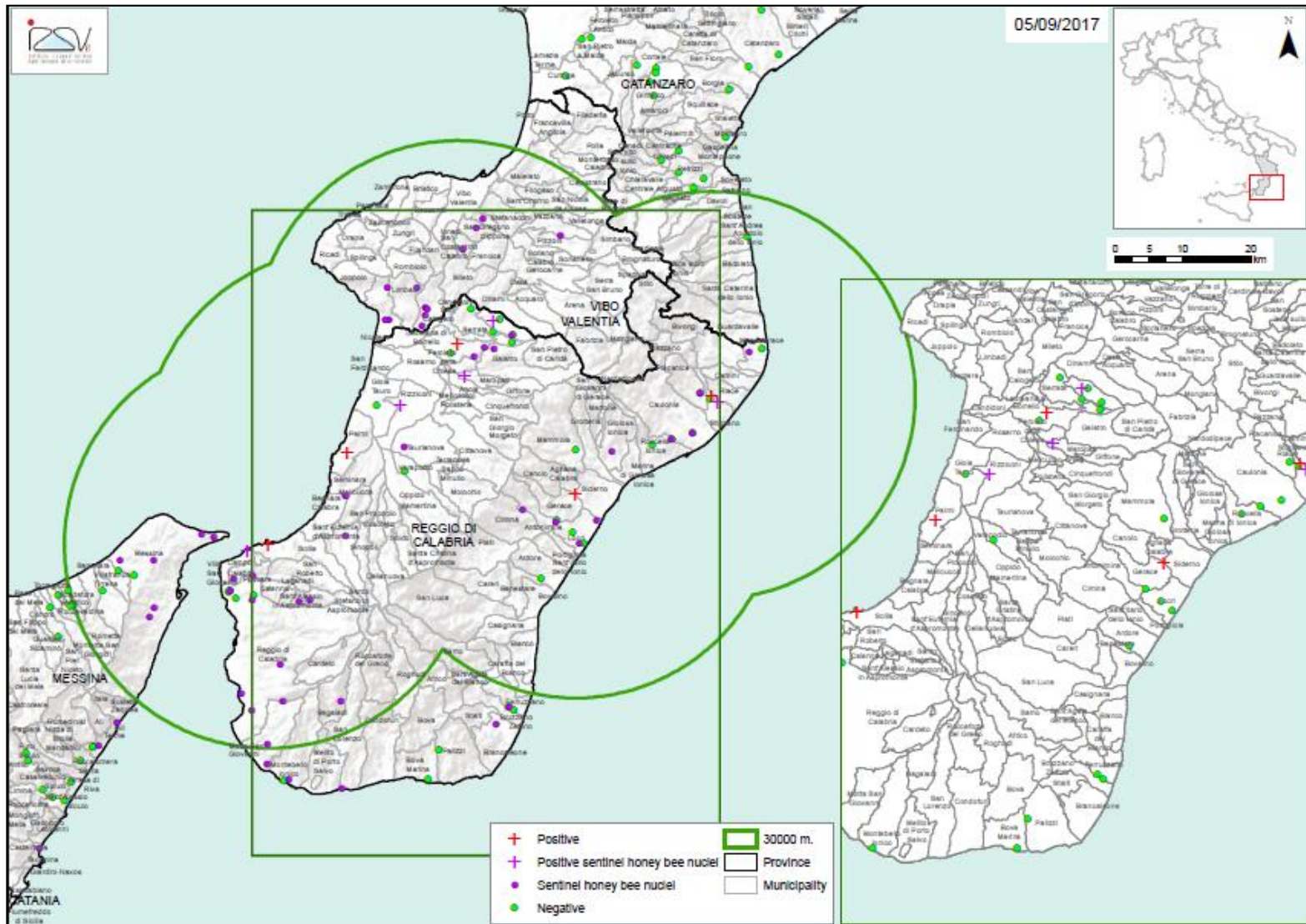


PAFF, May 2017

# Questions posed by the new findings

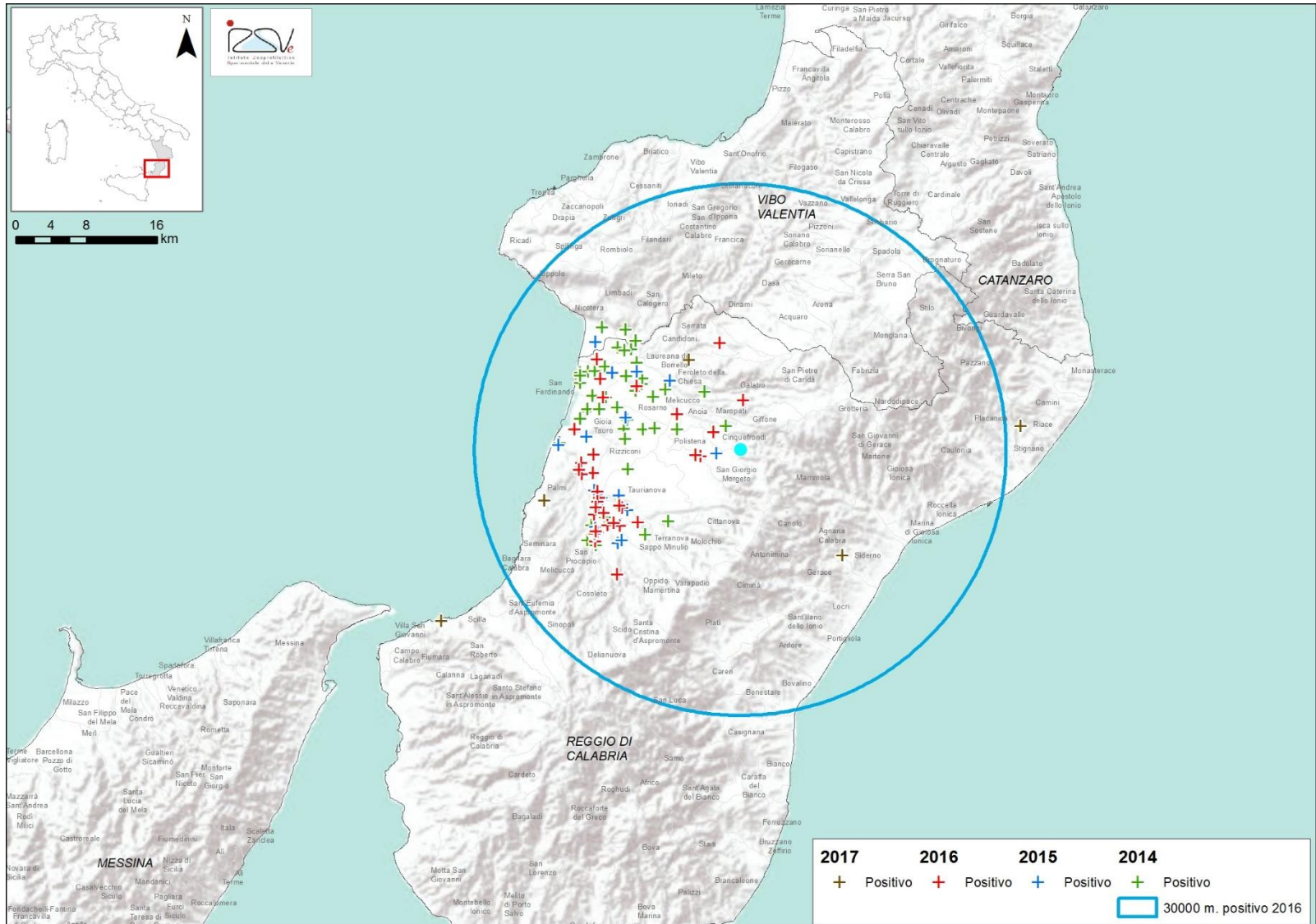
- 1) The apiaries in Siderno and Stignano are on the Ionian Sea side of Calabria region, this means that SHB crossed the mountains
- 2) No further SHB detection in that part of Calabria so far
- 3) The apiary in Stignano (outside the previous 20 km radius protection zone) belongs to a beekeeper who owned 2 other apiaries in the previous protection zone
- 4) No at risk movements of apiaries was detected

# Epidemiological situation: September 2017



Protection zone (30 km radius) since April 2017

# Epidemiological situation: September 2017



Protection zone of 30 km radius September 2014 - September 2017

# Measures adopted in Sicily region following Villa S. Giovanni's infested sentinel nucs

REPUBBLICA ITALIANA  
Regione Siciliana



ASSESSORATO DELLA SALUTE

Dipartimento Regionale per le Attività Sanitarie e Osservatorio Epidemiologico  
Servizio 10 "Sanità Veterinaria"

Prot./Servizio 10/ n 58299

Palermo, 13-7-2017

OGGETTO: Misure straordinarie da adottare a seguito di rinvenimento di *Aethina tumida* in un nucleo sentinella posizionato presso il Comune di Villa San Giovanni (RC).



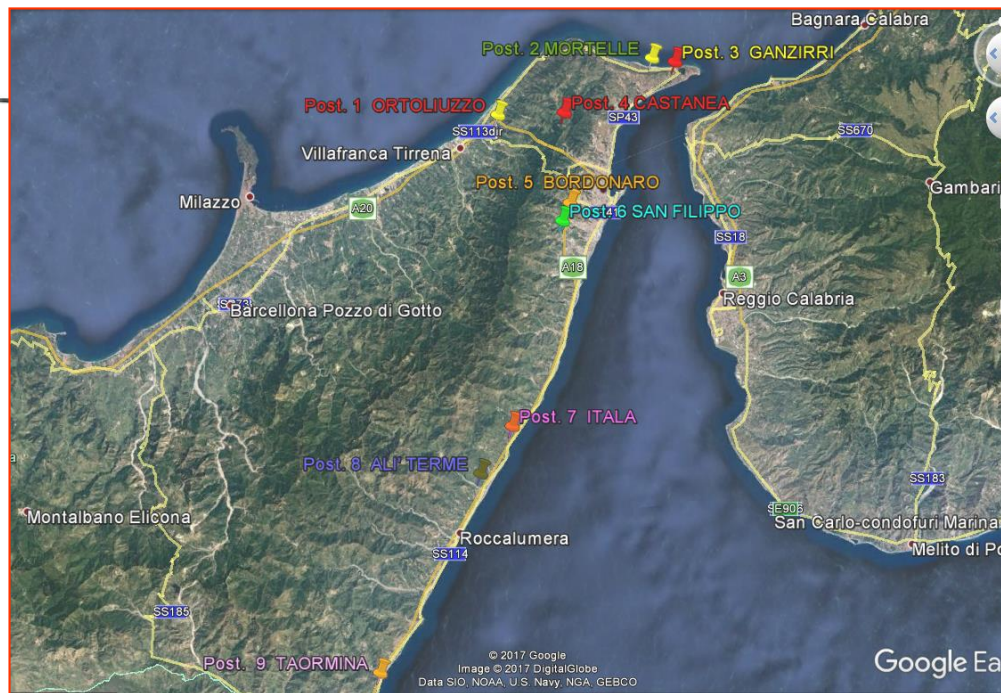
REGIONE SICILIANA  
**AZIENDA SANITARIA PROVINCIALE**  
**CATANIA**

Dipartimento di Prevenzione Veterinaria  
UOC Servizio Sanità Animale  
antonino.salina@aspct.it  
sanitaanimale@pec.aspct.it

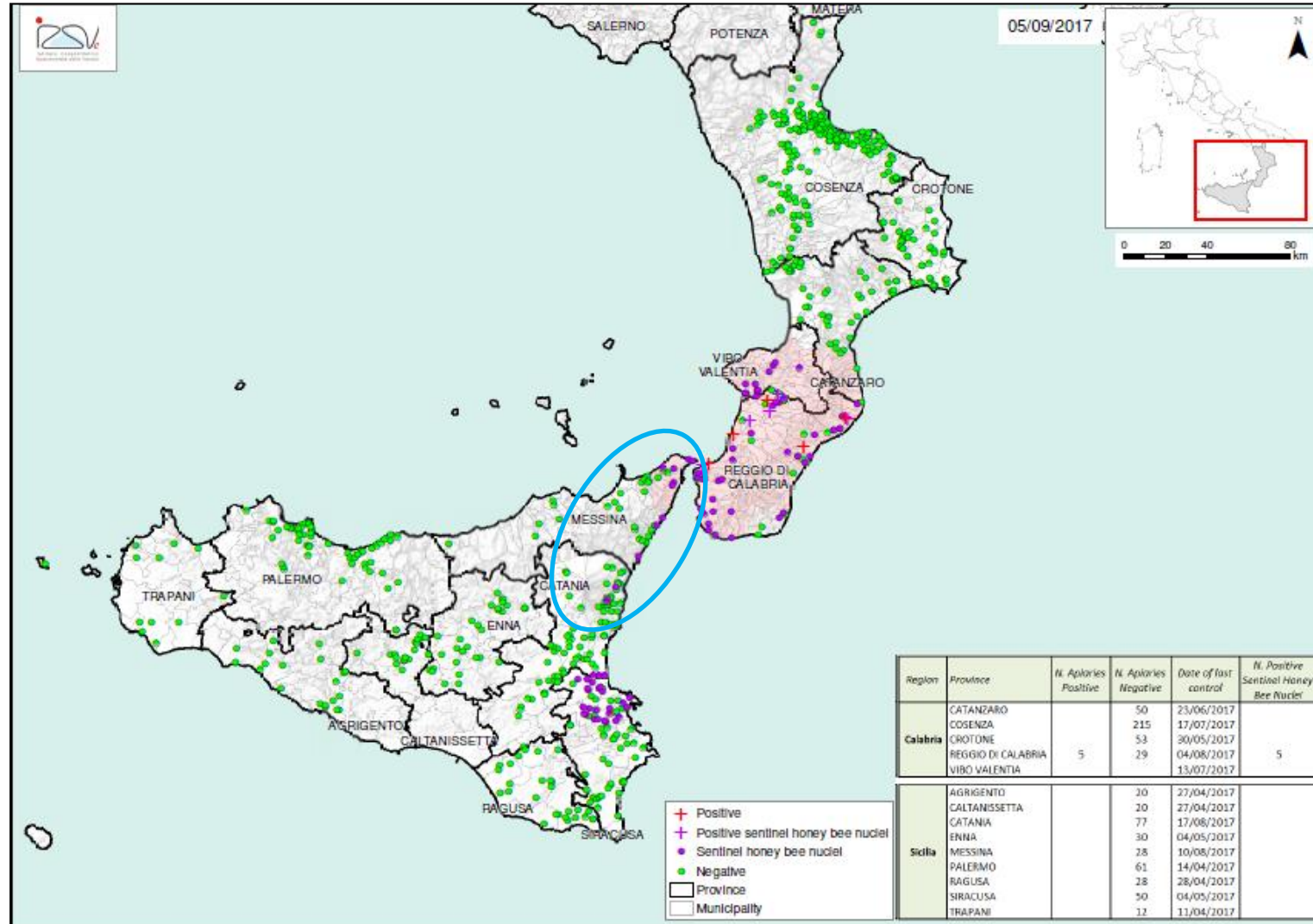
Prot. n. 86083  
Categ. \_\_\_\_\_ Classe \_\_\_\_\_ Fasc. \_\_\_\_\_

Gravina di Catania, li 24/07/2017  
Allegati n. 01 mappa

OGGETTO: Misure straordinarie seguito rinvenimento di *Aethina Tumida* in nucleo sentinella sito nel comune di Villa San Giovanni ( RC). Posizionamento nuclei sentinella nella provincia di Messina.



# Sentinel honey bee nucleus colonies in Sicily region facing Calabria coast





# Strait of Messina

At its narrowest point, between Torre Faro and Villa San Giovanni, is 3.1 km (1.9 mi) wide

The strait then widens southward to 8, 10 and 20 km

There is no scientific evidence of the distance that SHB can fly (supposed 10-13 km)

SHB carriage by the wind (also supposed but not demonstrated)

The winds of the strait blow mainly southerly (from south to north)



# Surveillance activity in Sicily region carried out according to the National program



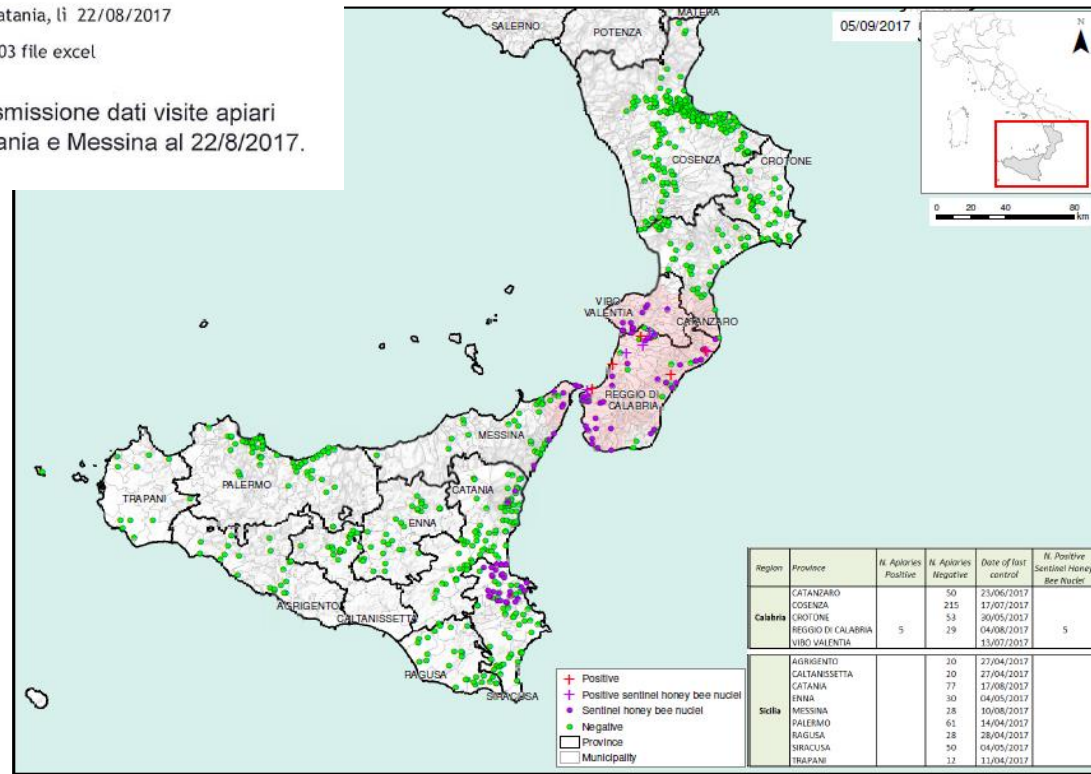
REGIONE SICILIANA  
**AZIENDA SANITARIA PROVINCIALE**  
**CATANIA**

Dipartimento di Prevenzione Veterinaria  
 UOC Sanità Animale  
 Direttore *dr. Antonino Salina*  
 antonino.salina@aspct.it  
 sanitaanimale@pec.aspct.it

Prot. n. 94521  
 Categ. \_\_\_\_ Classe \_\_\_\_ Fasc. \_\_\_\_

Gravina di Catania, li 22/08/2017  
 Allegati n. 03 file excel

**OGGETTO:** attività di sorveglianza 2017 per *Aethina Tumida* - trasmissione dati visite apiari nella ASP di Catania e nuclei sentinella siti nelle provincie di Catania e Messina al 22/8/2017.



# Comments as of September 2017

The spreads within Calabria occurred:

- ✓ across natural barriers (mountains), 2 apiaries, Ionian coast
- ✓ epidemiological investigation did not clarify how they happened
- ✓ protection zone of 30 km
- ✓ sentinel nuclei were effective in detecting SHB spreading
- ✓ Central and Local (Sicily) Authorities immediately reacted to the new findings in Calabria (July 2017) with new sentinels in place
- ✓ intensive active surveillance still in progress in Sicily region

Thank you for your attention