

HPAI outbreak in RO



Place: Seini, Maramures county

North of RO

Affected objective: Laying hens farm



- **Dr. Ioana NEGHIRLA**
- Director of the Animal Health Directorate
- National Sanitary Veterinary and Food Safety Authority in Romania

HPAI – primary data available and measures put in place

- 01.01.2020 - 18699 laying hens present in the housing facility
- 06.01.2020 - first mortalities observed - 15
- 07.01.2020 - mortality of 200
- 08.01.2020 - mortality of 500
- 08.01.2020 – NSVFSA information concerning the HPAI outbreaks notified by Poland, by which the FBOs were made aware of the HPAI epidemiological situation in the EU
- 08.01.2020 – The FBO notified the local veterinary services of the high mortalities and the regional official inspection team from CSVFSD Maramures performed an official inspection:
 - Clinical signs
 - Sampling (28 blood samples + 10 carcasses)
 - ND antibodies detected
 - AI antibodies not detected
 - Necropsies detected no specific signs of AI



HPAI – primary data available and measures put in place

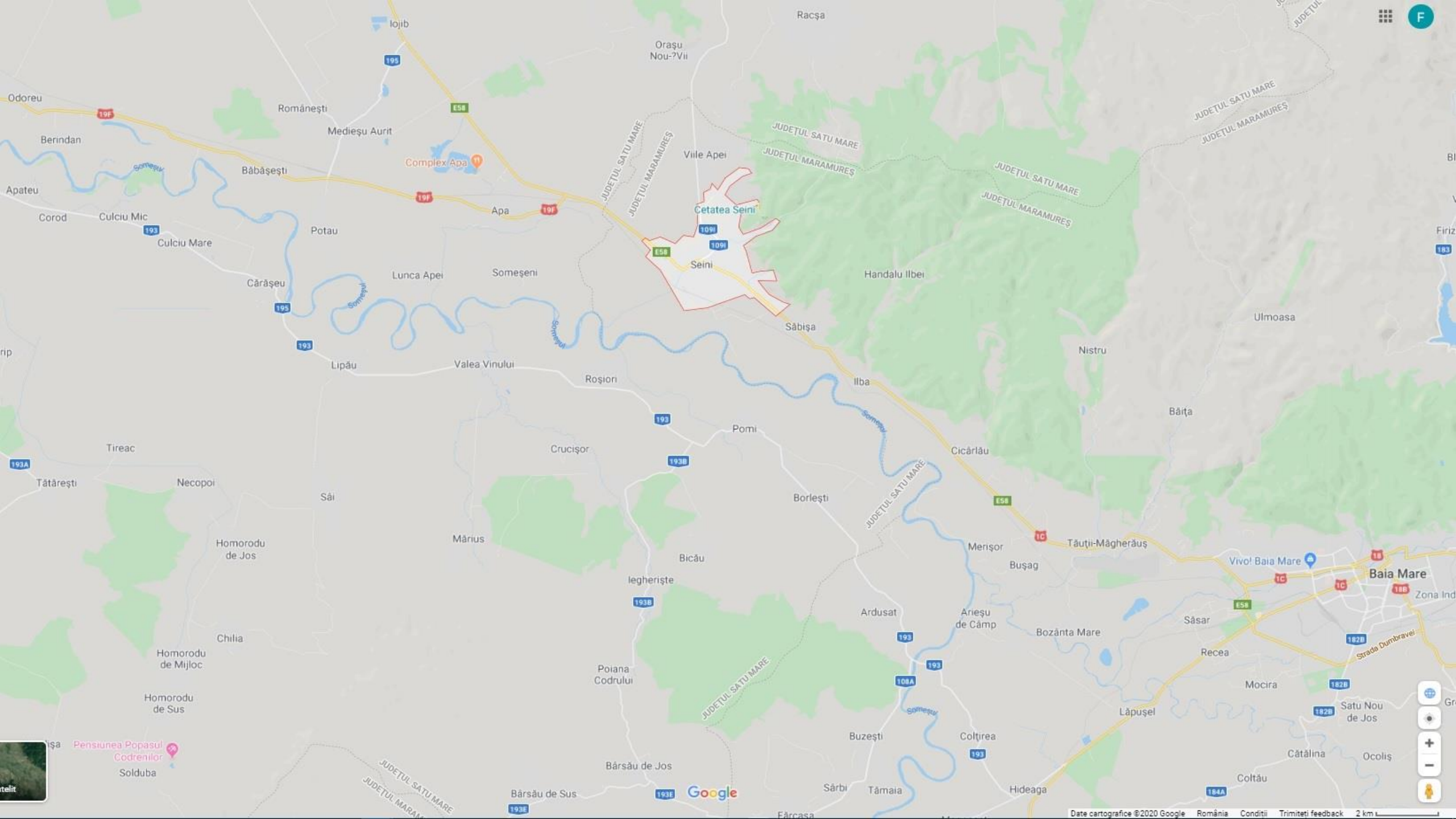
- **08.01.2020 - start of the official epidemiological investigation**
- **09.01.2020 – mortality of 1070**
- **09.01.2020 - NSVFSA information concerning the mandatory compliance of the FBOs with the biosecurity provisions enforced by national legislation – Order of the President of the NSVFSA 21/2018 on biosecurity measures in commercial farms as well for live birds and movement of the products thereof**
- **10.01.2020 – mortality of 2116**
- **10.01.2020 – sampling for confirmation sent to the NLR for AI – Institute for Diagnostic and Animal Health (20 blood samples + 5 carcasses)**
- **11.01.2020 – mortality of 2375**

HPAI – primary data available and measures put in place

- **12.01.2020 – mortality of 2401**
- **13.01.2020 – mortality of 2513**
- **13.01.2020 – the results from NRL shows the presents of H5 and official movement restrictions enforced (SZ of 10 km and PZ of 3 km) around the affected holding.**
- **14.01.2020 – the HPAI outbreak was confirmed-H5N8**
- **14.01.2020 ADNS/WAHIS notification**
- **14.01.2020 – a number of 7509 laying hens that were still present in the holding were killed by using CO2**
- **15.01.2020 – start of the incineration process for all carcasses**

Increased mortality in wild birds and test results

- In the vicinity of the affected holding there is the Someș river, one of the major natural rivers in Romania. The Someș river is also part of one of the main migration courses for wild birds in Romania.
- The veterinary authorities notified the competent authorities for environment and wildlife aspects, namely the regional environmental office and formed mixed teams for the inspection of the Someș river bed for dead wild birds.
- Up until now, no dead wild birds were found.



F

Google



Penstunea Popasul Codrenilor Solduba



Tracing back of the products

155.850 eggs were produced since 01.01.2020 till the killing of the birds

Starting with 09.01.2020 no eggs were dispatched from the farm and the stock on 13.01.2020 was of 12274 eggs – all were destroyed by incineration on 15.01.2020

Total eggs recall from selling from those sold till 09.01.2020 – 6980 eggs which will be destroyed today 16.01.2020 by incineration



PZ and SZ

Protection zone (3 km): Maramures county – 2 localities

Satu Mare county – 1 locality

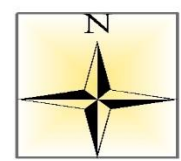
Surveillance zone (10 km): Maramures county – 6 localities

Satu Mare county – 14 localities

Commercial holdings in the PZ: 9 (out of which one is depopulated and another is the farm with the outbreak) in Maramures county

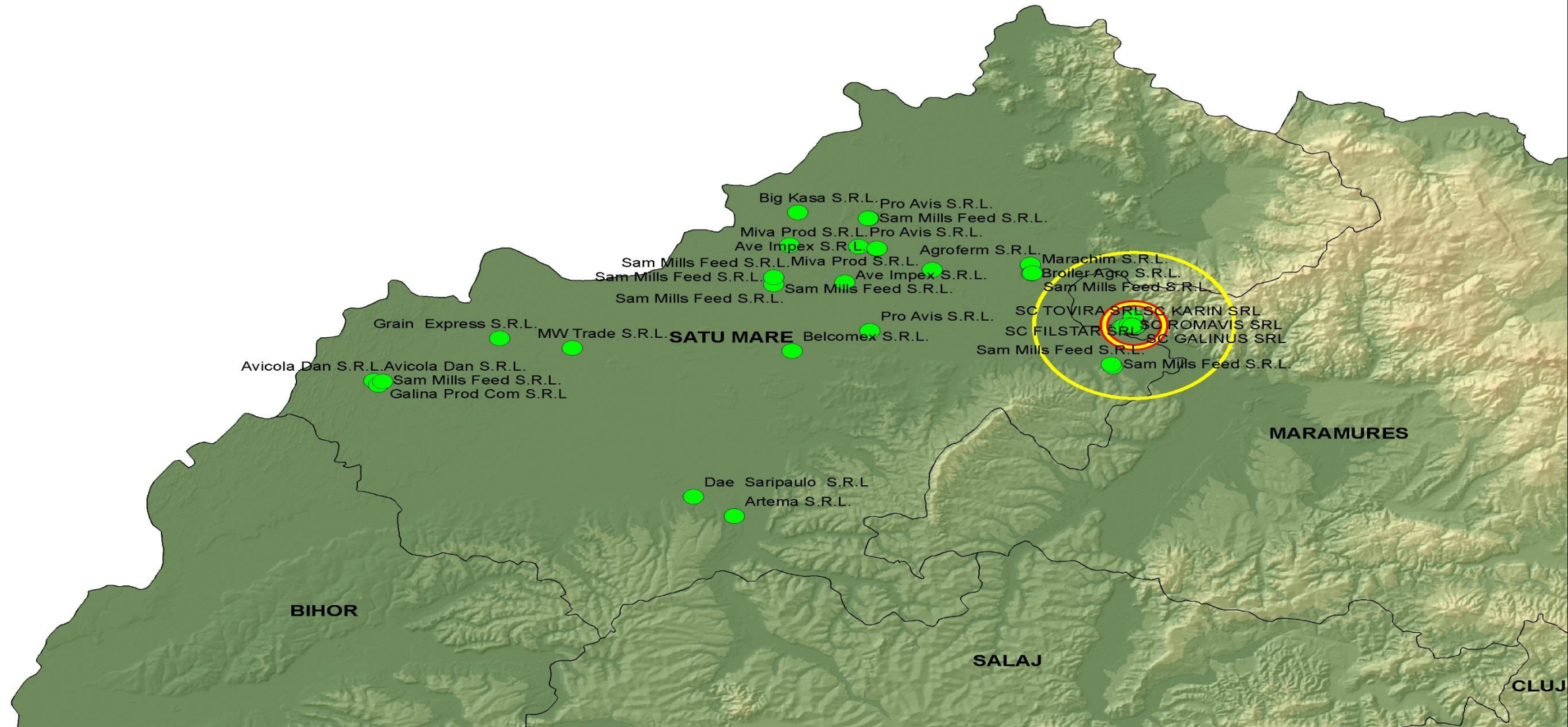
Commercial holdings in the SZ: 2 in Satu Mare county

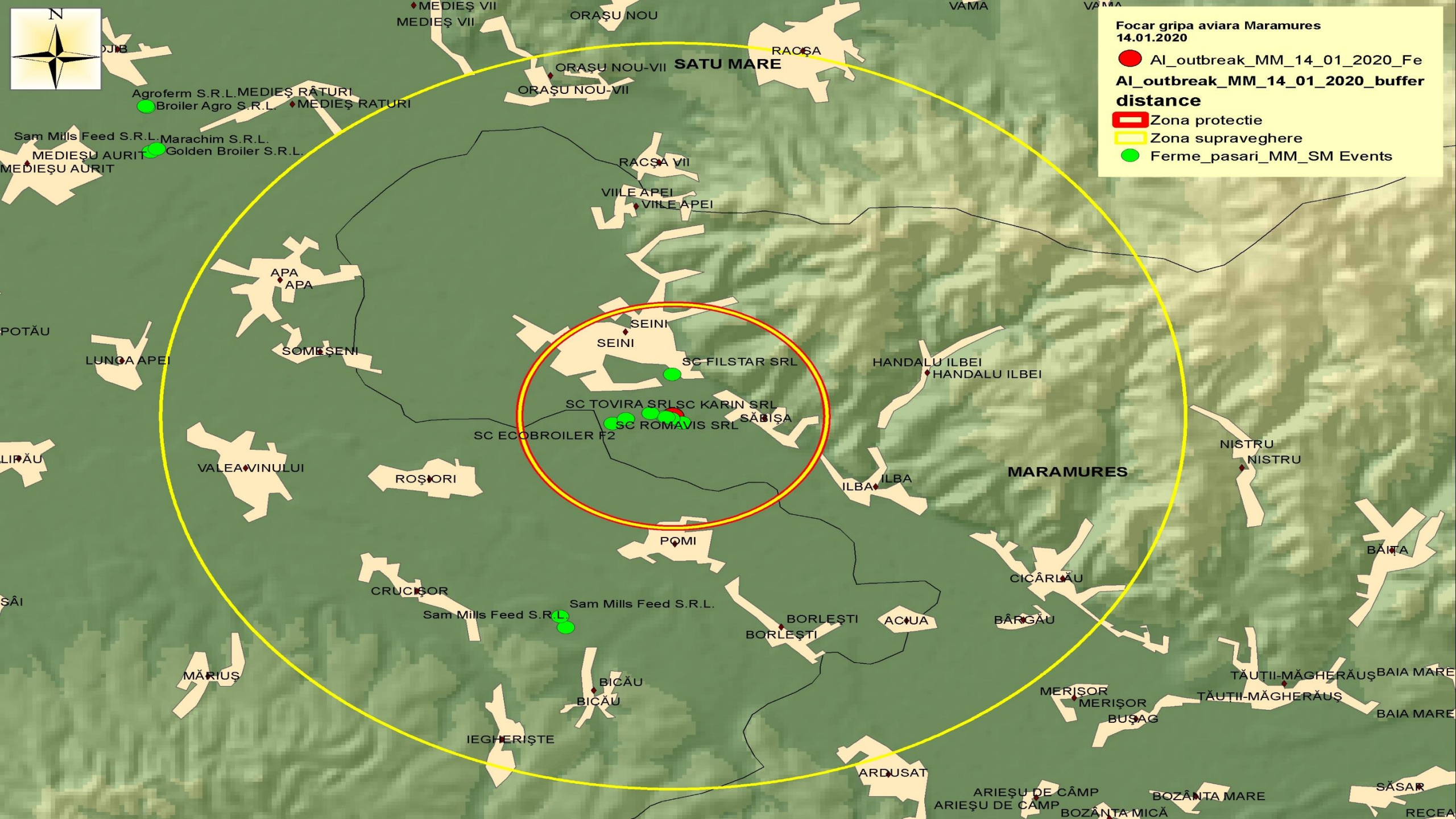
Movement restricted measures were imposed to the farm from PZ and SZ



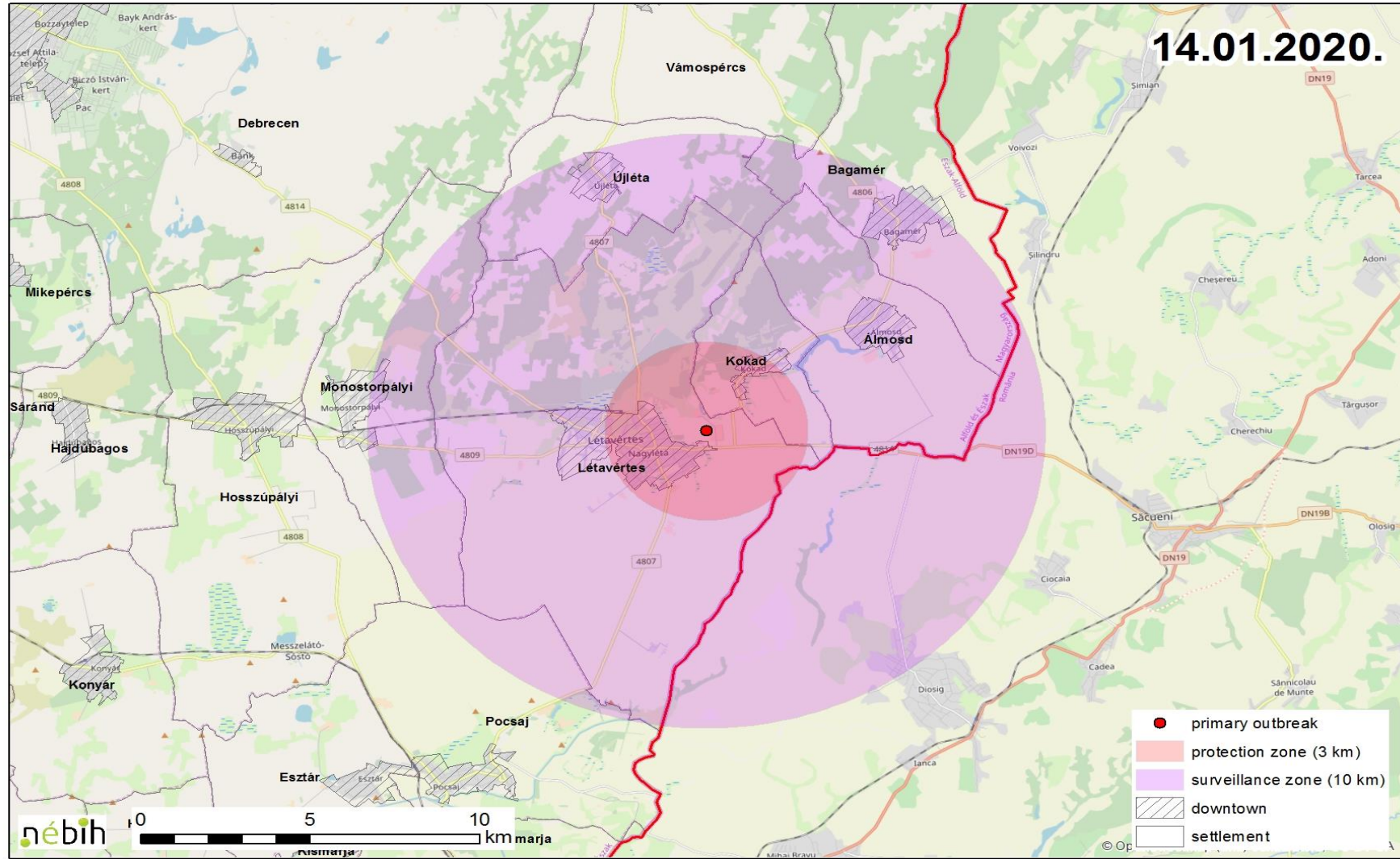
Focar gripa aviara Maramures
14.01.2020

- AI_outbreak_MM_14_01_2020_Fe
- AI_outbreak_MM_14_01_2020_buffer distance**
- Zona protectie
- Zona supraveghere
- Ferme_pasari_MM_SM Events

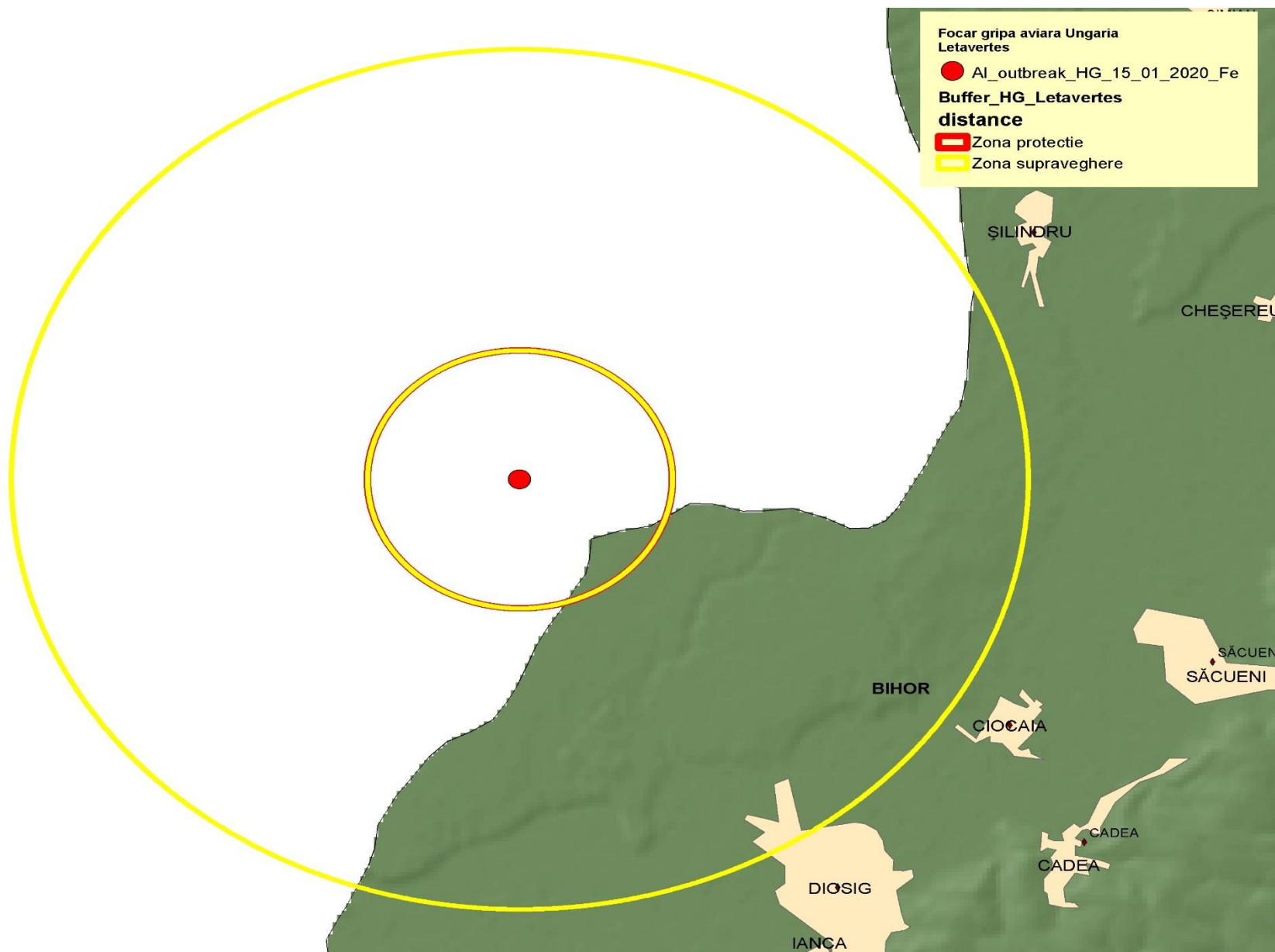




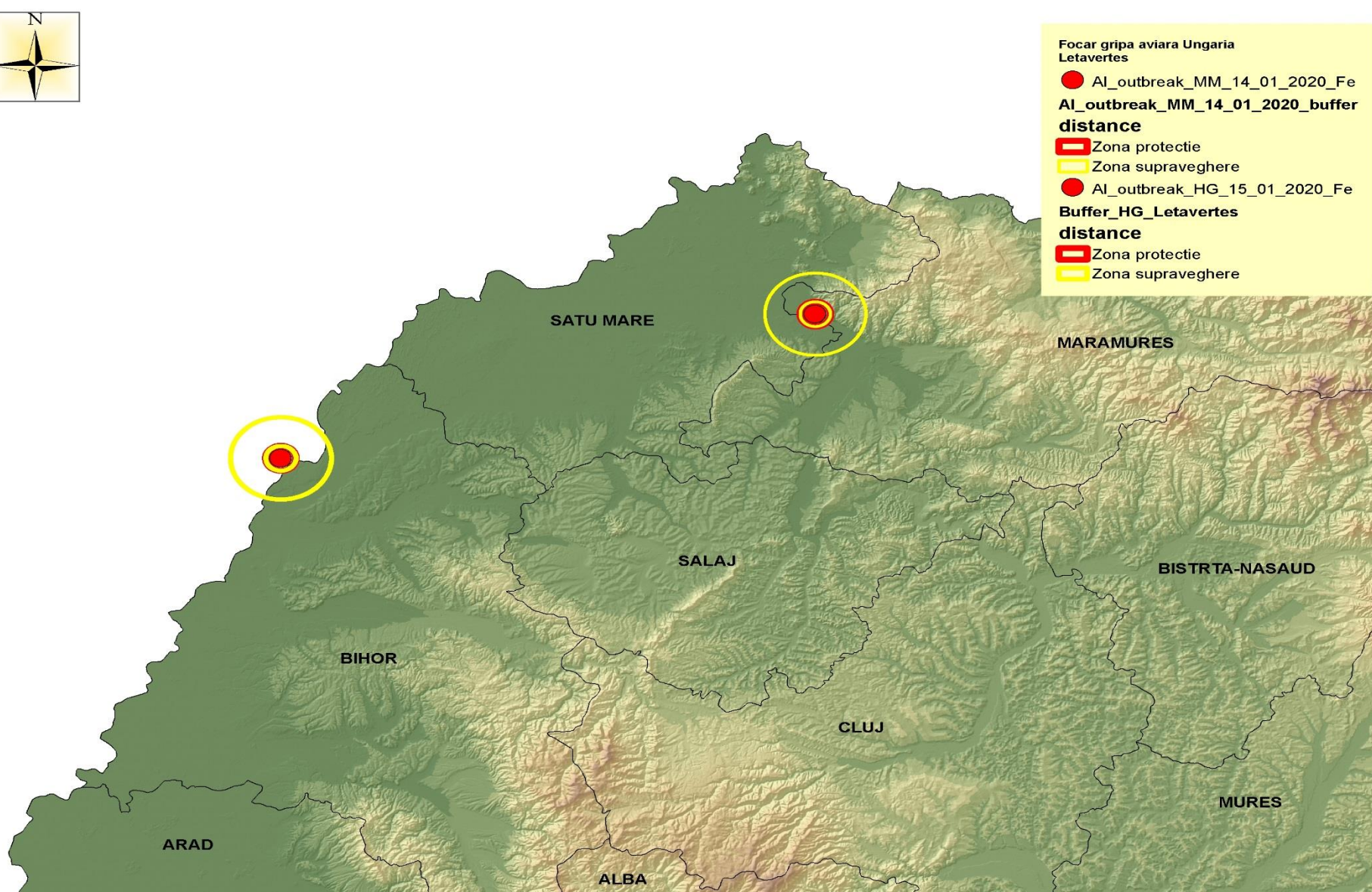
HPAI outbreak in Hungary close to the Romanian border



Second HPAI outbreak in Hungary close to the Romanian border – PZ and SZ for Romania



The two recent outbreaks in Romania and Hungary





Thank you for your attention