

African swine fever in Lithuania (update of the situation)

**State Food and Veterinary Service of
The Republic of Lithuania**

www.vmvt.lt

October | 2022

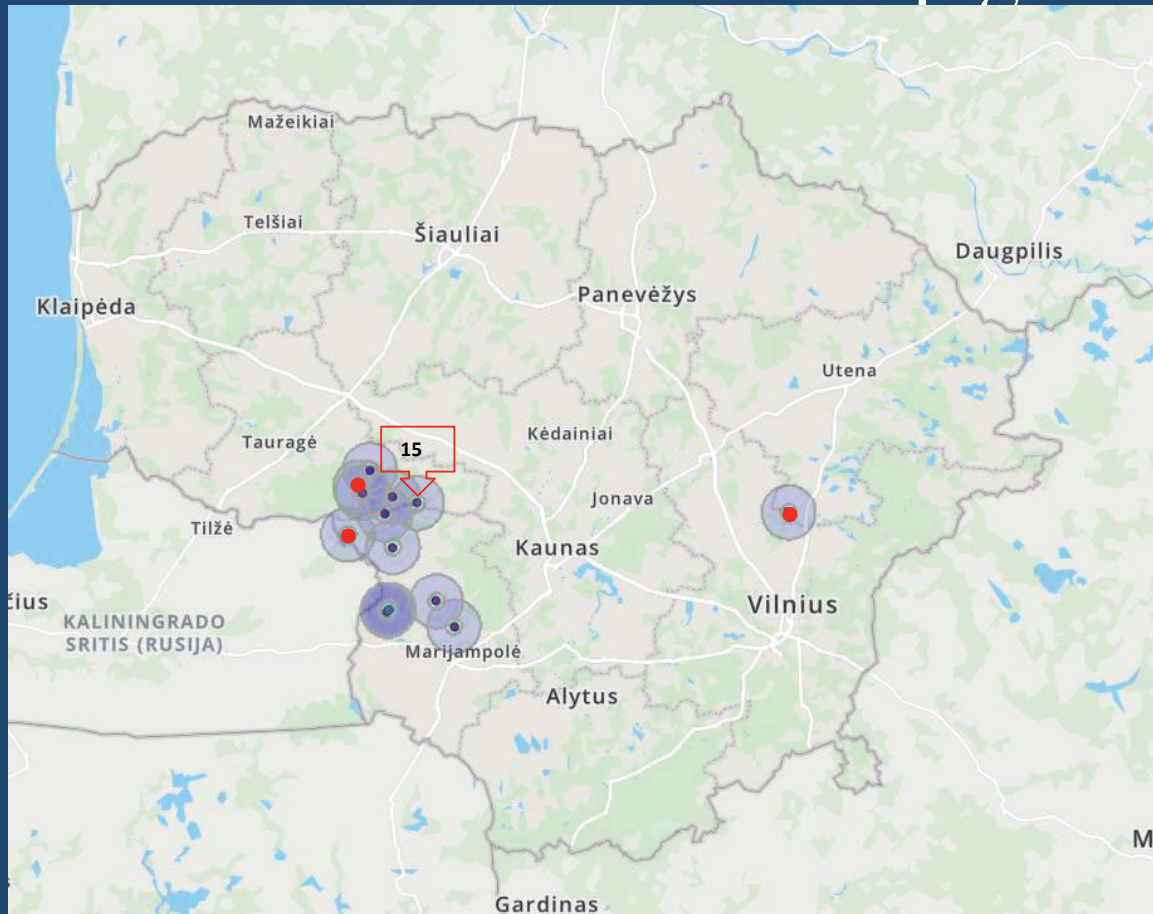
ASF in Lithuania in domestic pigs

**One ASF outbreaks since
2022/09/13**

2022/09/20 – 15 ASF
outbreak was confirmed in
non-commercial farm (4
pigs).

**In total 15 outbreaks in
Lithuania in 2022**

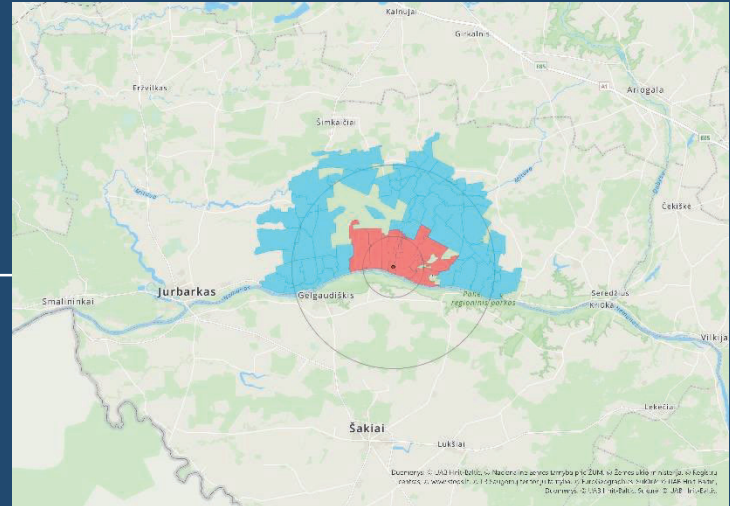
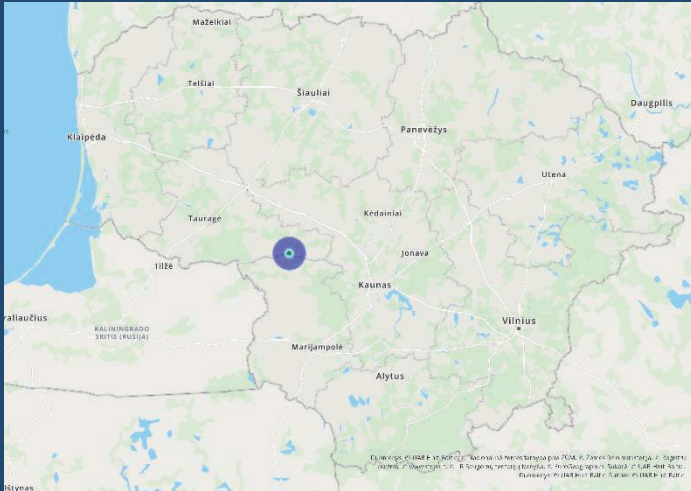
- **12** non-commercial (46 pigs).
- **3** commercial farms (2202 pigs).



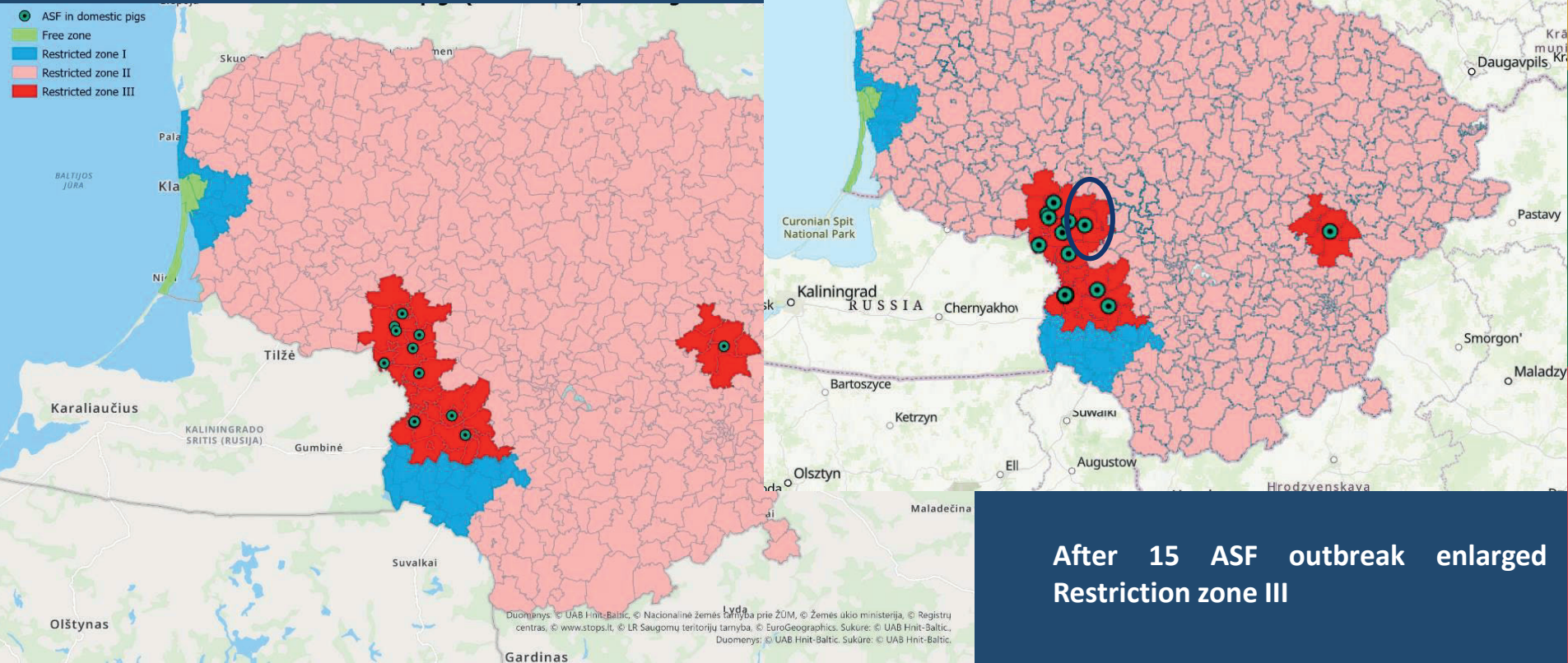
15 ASF outbreak in Lithuania 2022/09/20

- On 16 September 2022, the owner observed that one out of 4 pigs suddenly died out
- A temporary restriction on the farm was set immediately on the day of suspicion.
- The private veterinarian took organ samples from the dead pig and blood samples from the remaining 3 fattening pigs within the framework of the ASF surveillance program

- ASF was confirmed using RT-PCR on 19 September 2022 in 3 samples out of 4 tested.
- Restriction zones on the farm was set immediately on the day of confirmation
- All measures were implemented according to Commission Delegated Regulation (EU) 2020/687 of 17 December 2019 supplementing Regulation (EU) 2016/429 of the European Parliament and the Council, as regards rules for the prevention and control of certain listed diseases.

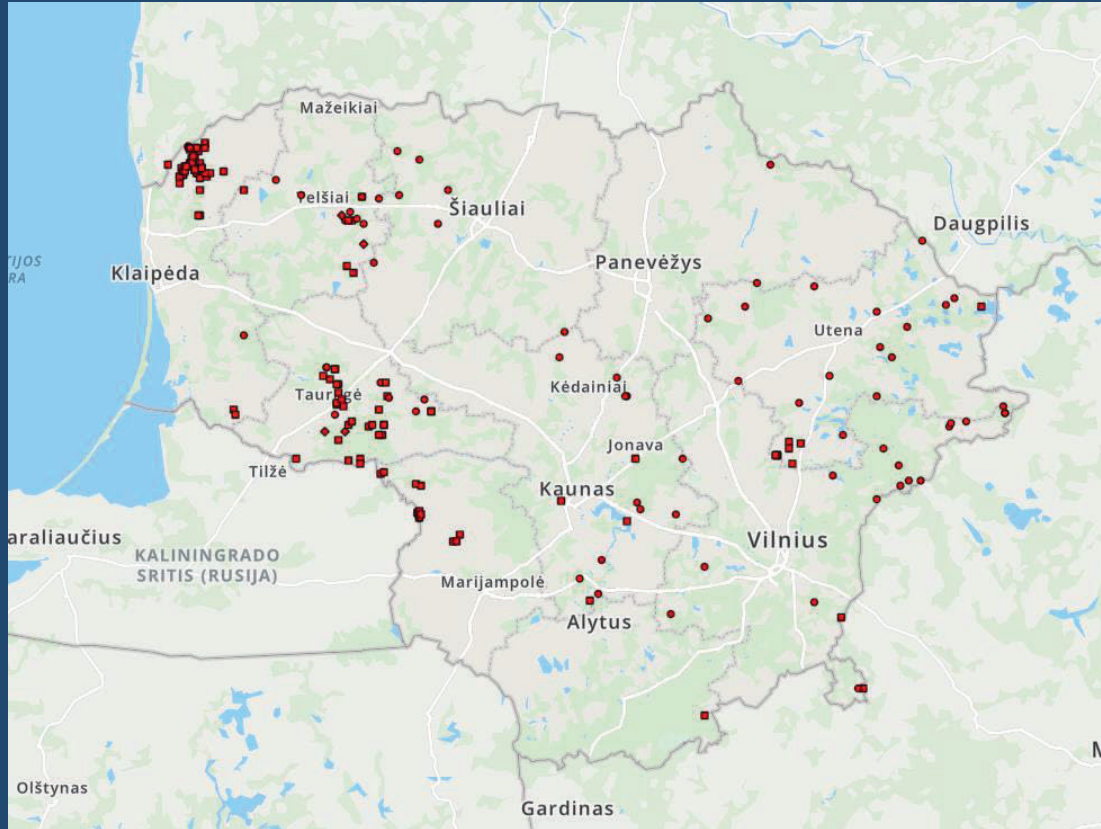


ASF in Lithuania in domestic pigs



ASF in Lithuania in wild boars

212 case (520 wild boars 101 hunted 419 found dead)





VALSTYBINĖ MAISTO IR
VETERINARIJOS TARNYBA



www.vmvt.lt