



Bundesministerium  
für Ernährung  
und Landwirtschaft

# African Swine Fever in DEU

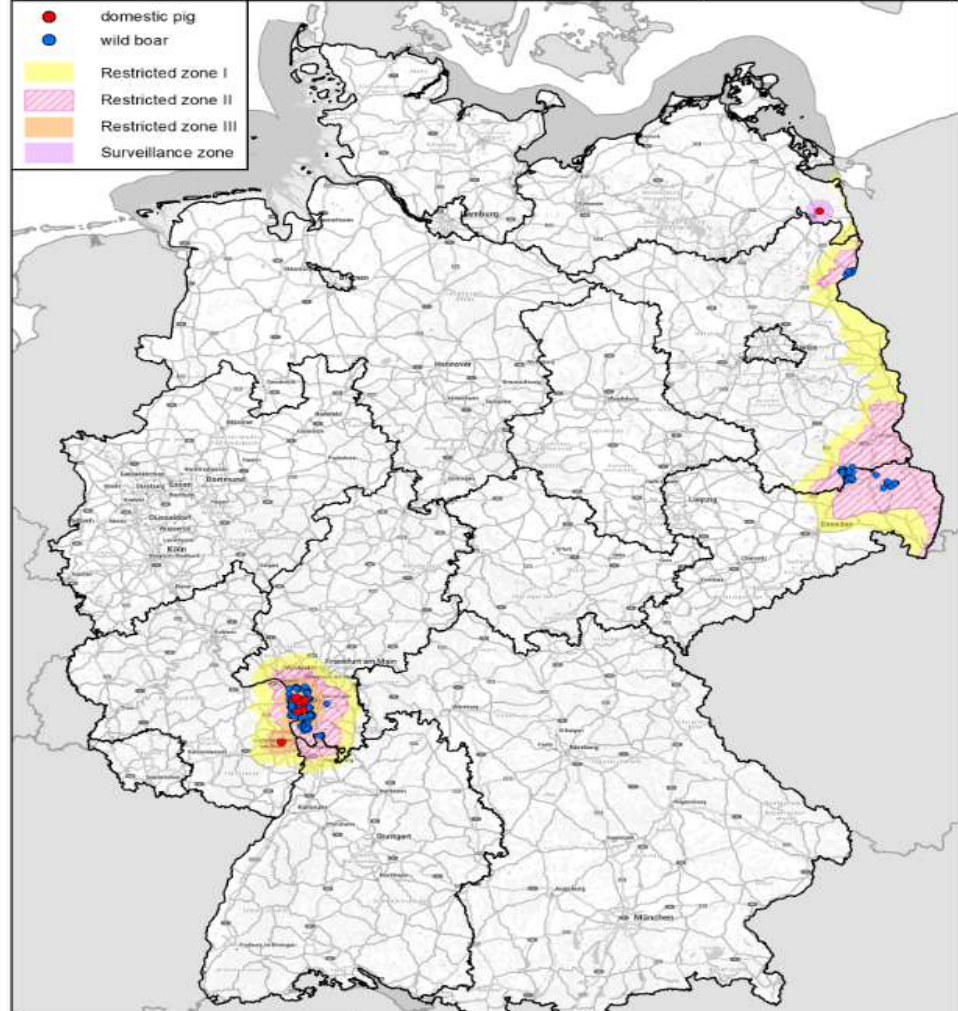
SCoPAFF October 2024

[bmel.de](https://www.bmel.de)  

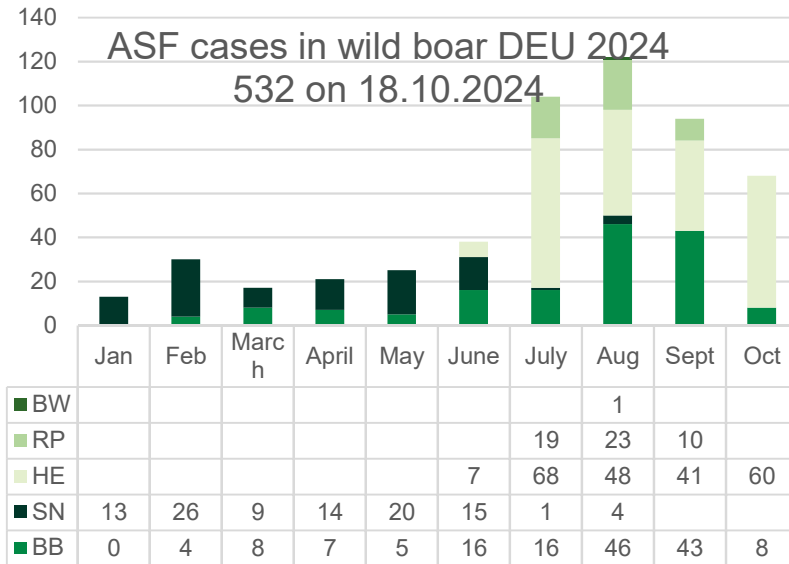
# ASF in DEU – overview

African swine fever in Mecklenburg-Western Pomerania,  
Brandenburg and Hesse/Rheinland-Palatinate/Baden-Wuerttemberg  
Source: TSN (Status: 21.04.2024 - 21.10.2024)

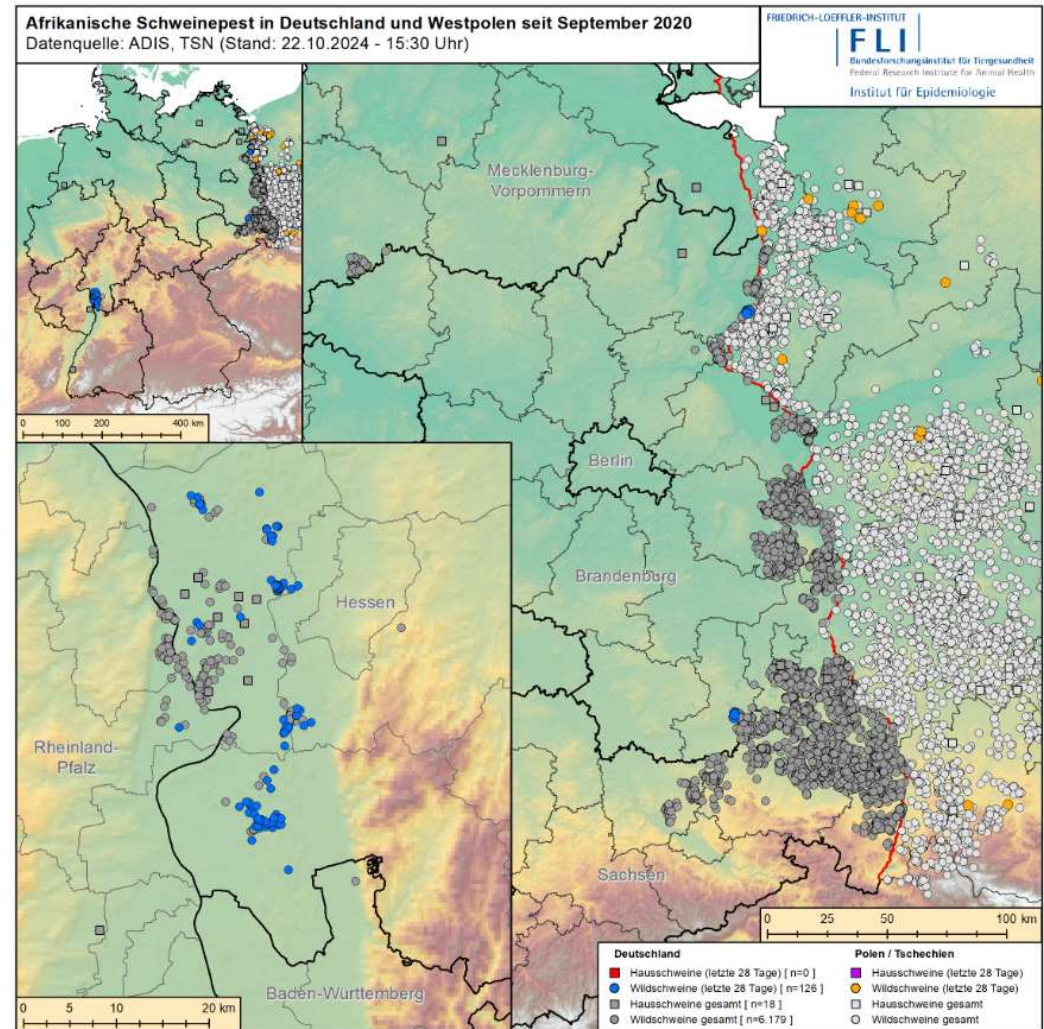
FLI  
Forschungsinstitut für Tiergesundheit  
Institut für Epidemiologie



# ASF in wild boar in DEU in 2024 – 532 cases

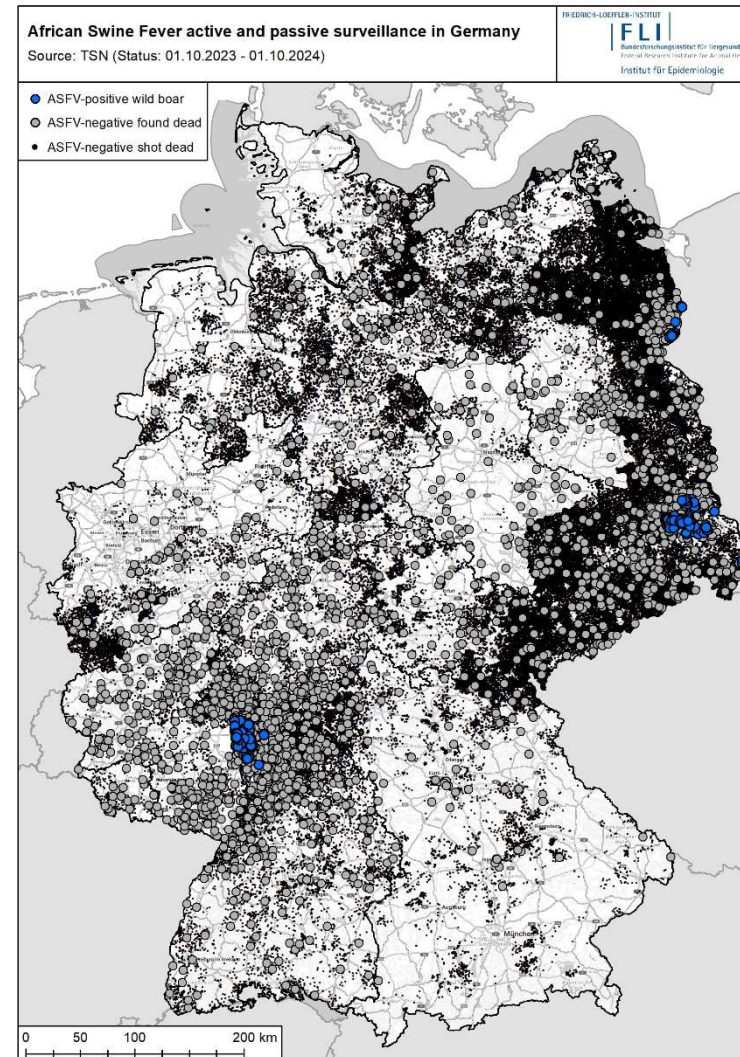


 Bundesministerium  
für Ernährung  
und Landwirtschaft

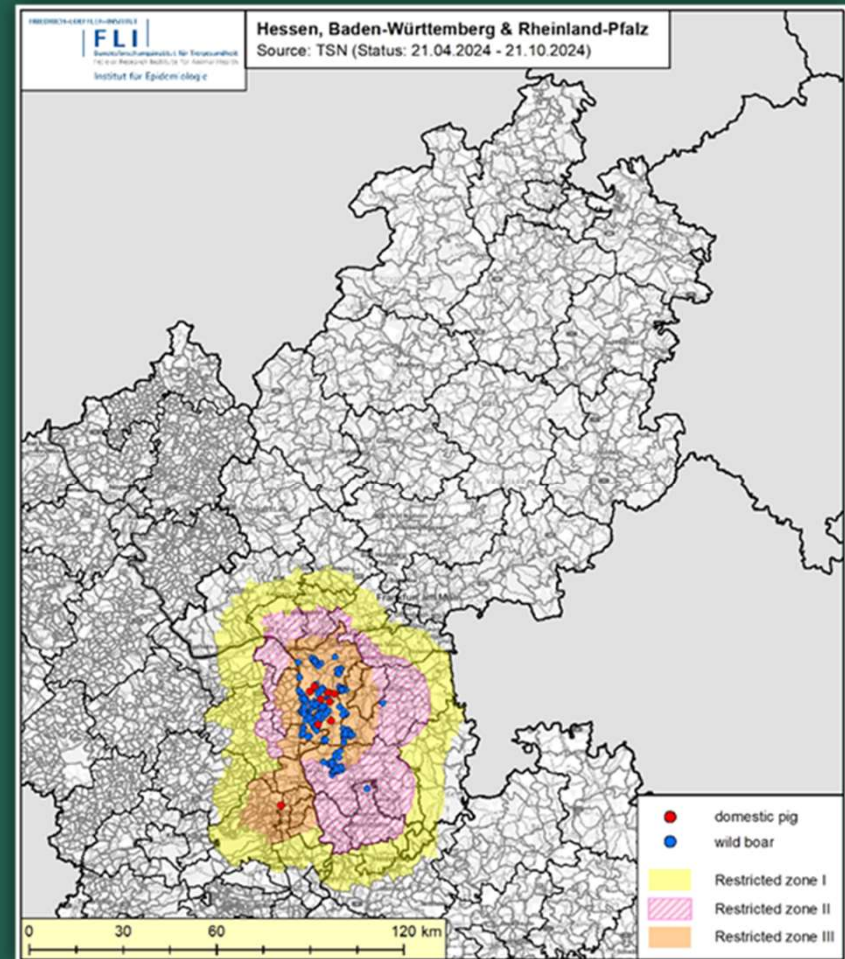


# ASF surveillance in DEU

12 months



ASF  
in Hesse (HE),  
Rhineland-Palatinate (RP) and  
Baden-Wuerttemberg (BW)



Enlargement RZ II in Hesse



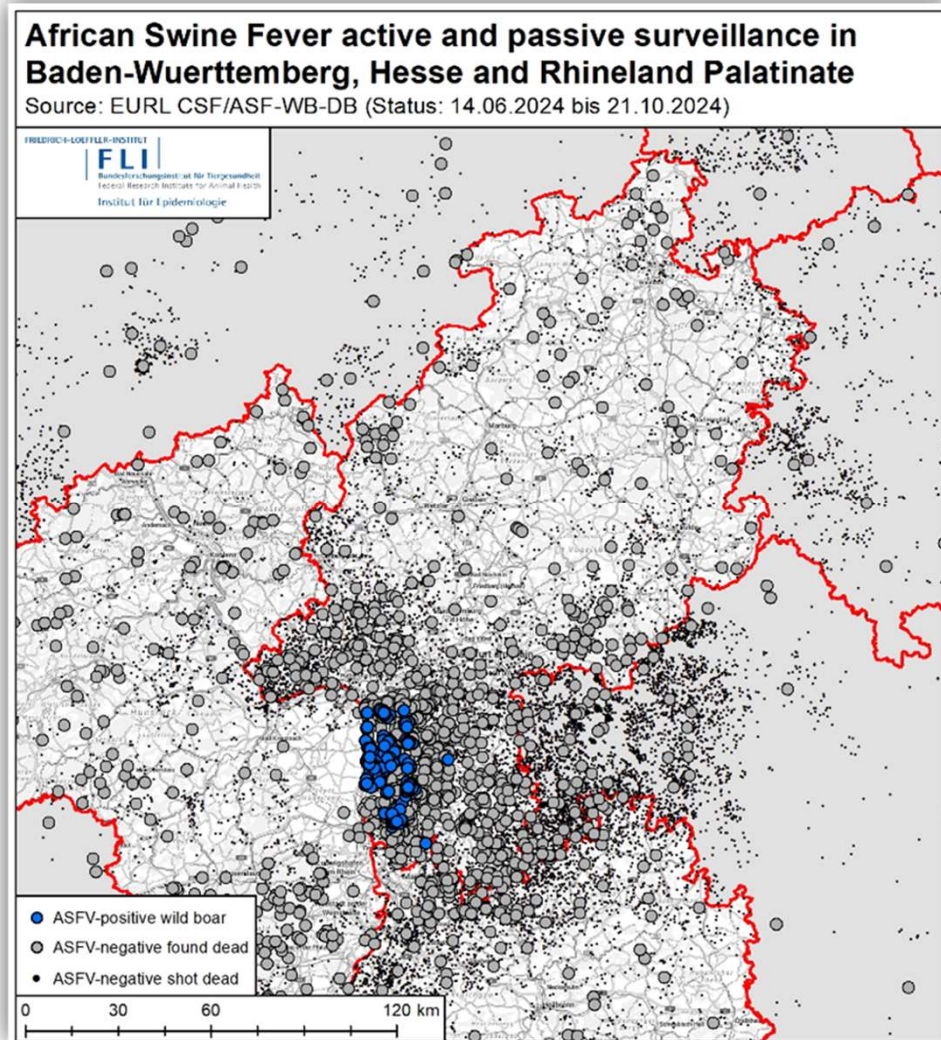
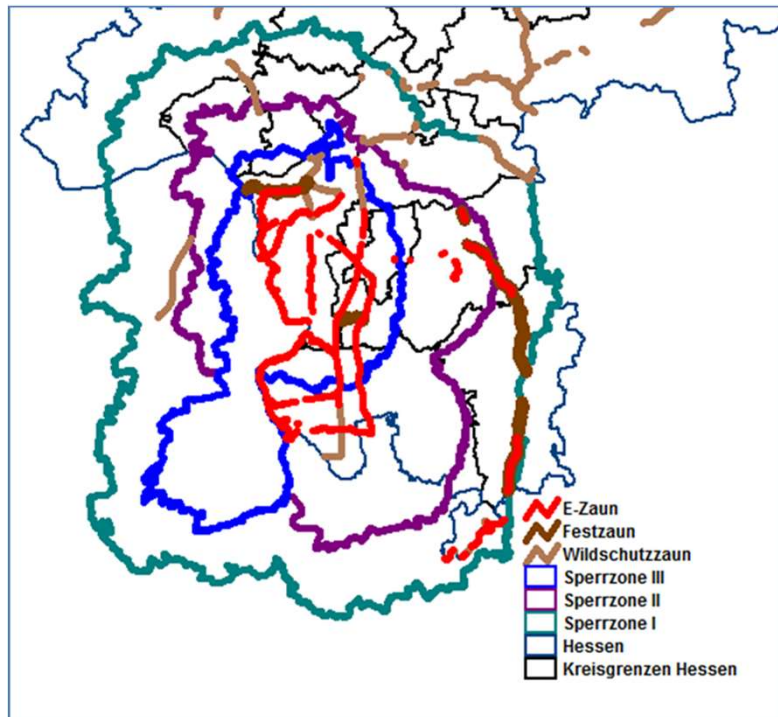
As of September 24<sup>th</sup>, 2024



As of October 7<sup>th</sup>, 2024

# ASF in HE + RP + BW

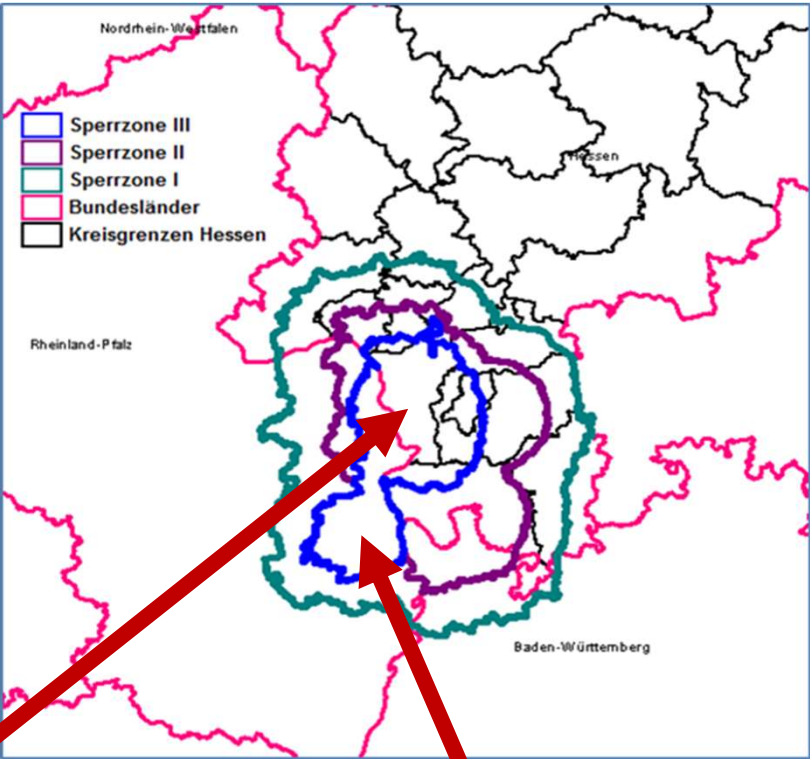
Surveillance and fencing (>300 km in HE + 165km in RP)



# ASF RZ III

## due to outbreaks in pig establishments in HE + RP

ID	Date	Location	Count
DE ASF 2024-179	18.7.2024	Stockstadt, HE	1129
DE ASF 2024-197	23.7.2024	Groß Gerau, HE	16
DE ASF 2024-198	23.7.2024	Riedstadt, HE	168
DE ASF 2024-203	24.7.2024	Riedstadt, HE	27
DE ASF 2024-216	25.7.2024	Groß Gerau, HE	159
DE ASF 2024-223	26.7.2024	Trebur, HE	7
DE ASF 2024-243	31.7.2024	Trebur, HE	2419
DE ASF 2024-333	15.8.2024	Gerolsheim, RP	3



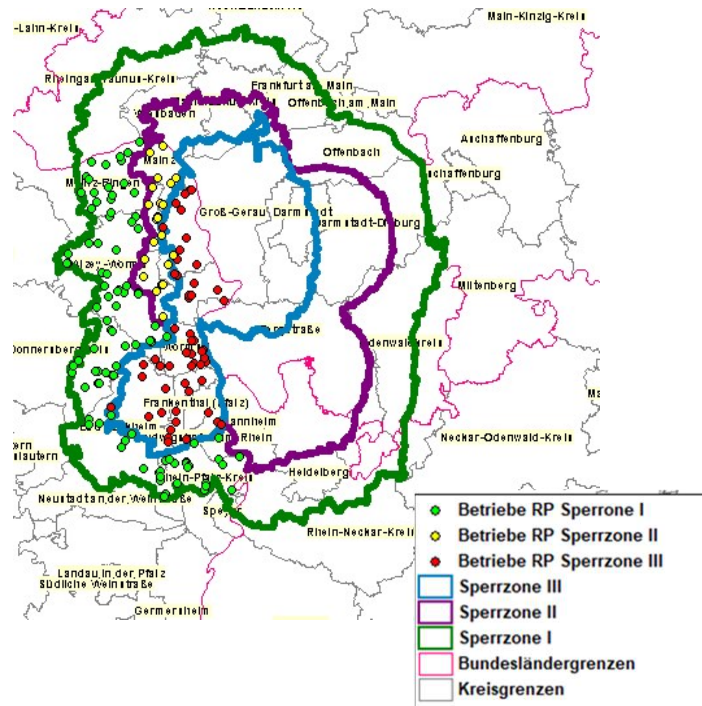
Hotspot in HE

Single introduction in RP

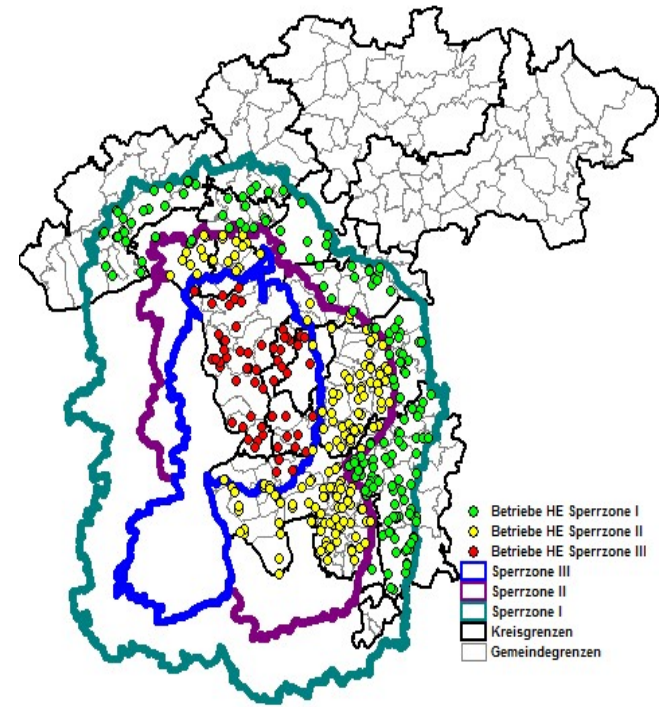


# ASF RZ III due to outbreaks in pig establishments

Pig establishments in RZ - RP

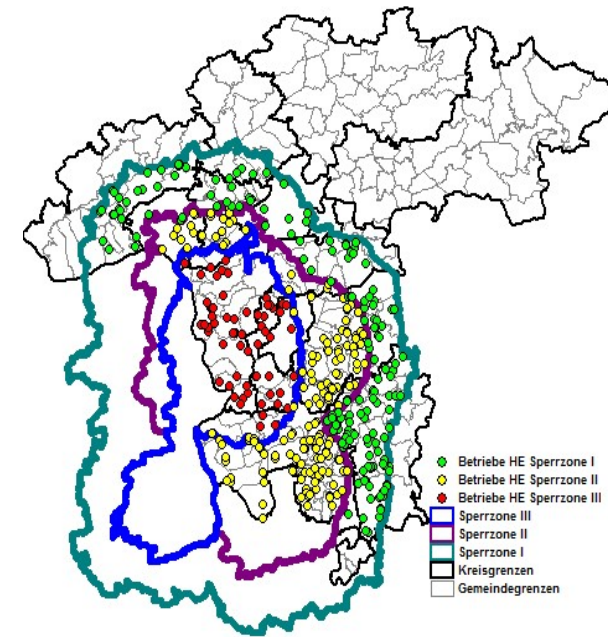


Pig establishments in RZ - HE



# ASF RZ III + II kept pigs data of HE

	Anzahl schweinehaltende Betriebe		Anzahl durchgeführter Kontrollen	Anzahl kontrollierter Betriebe
	Anzahl	Davon am 10.10.24 leer		
<b>Sperrzone III</b>	77	28	67	51



	Anzahl schweinehaltende Betriebe		Anzahl Schweine	Anzahl Betriebe ≤ 10 Schweine	Anzahl Betriebe > 10 Schweine	Anzahl Betriebe Freilandhaltung
	Anzahl	davon leer				
Sperrzone II	180	34	19.643	134	46	1 (28 Schweine)

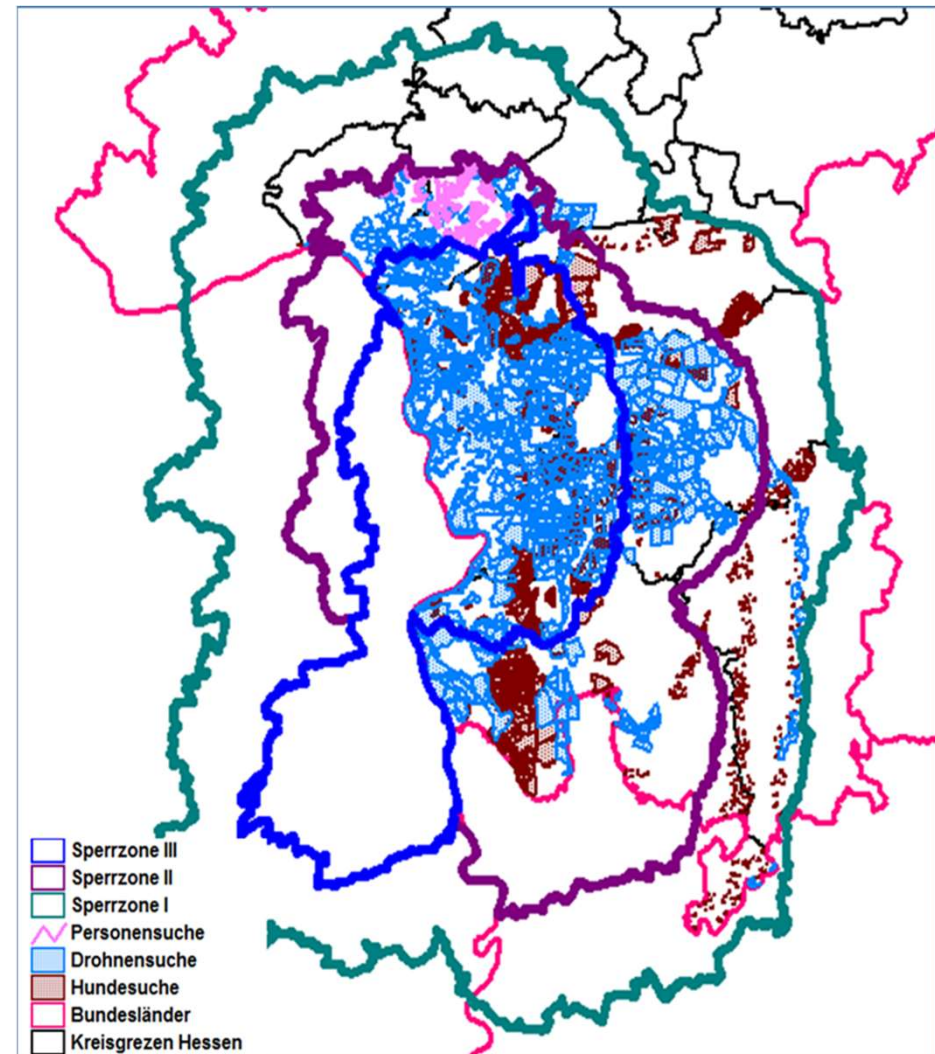
# ASF RZ II + I kept pigs data of HE

Virological and serological tests in pig establishments within RZ II and I  
(as of 08.10.2024) positive results within the seven outbreaks

Lankreis / kreisfreie Stadt	Anzahl Proben ASP-PCR		Anzahl Proben ASP-ELISA	
	negativ	positiv	negativ	positiv
Kreis Bergstrasse	268	0	0	0
Kreis Darmstadt-Dieburg	342	0	100	0
Kreis Groß-Gerau	237	41	28	0
Hochtaunuskreis	15	0	0	0
Main-Taunus-Kreis	26	0	0	0
Odenwaldkreis	1	0	0	0
Kreis Offenbach	0	0	0	0
Rheingau-Taunus-Kreis	2	0	1	0
Stadt Frankfurt	0	0	0	0
Stadt Darmstadt	0	0	0	0
Stadt Wiesbaden	42	0	0	0

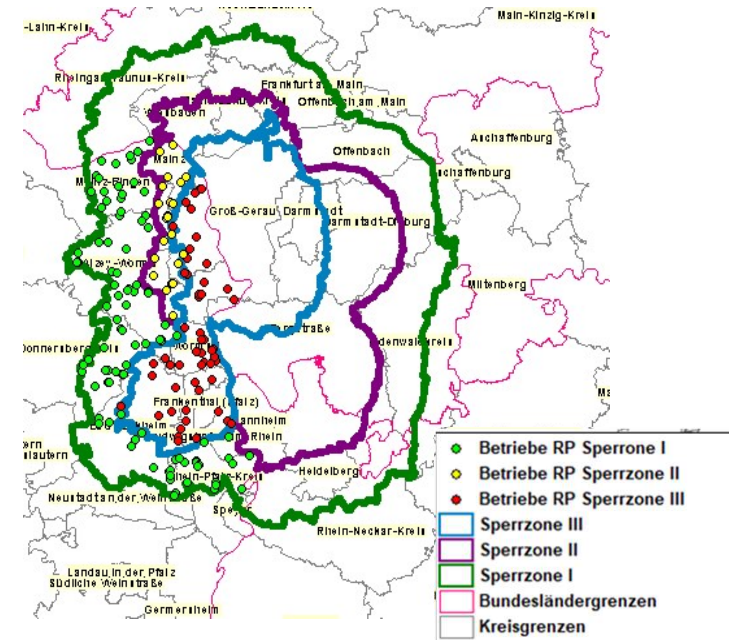
# ASF in HE measures

- Movement restrictions
- Check of pig establishments (no pig industry area)
- Active search for carcasses (in HE >150.000ha)
- Eradication in affected pig establishments
- Epidemiological investigations including FLI
  
- Fencing ongoing
- started
  
- Many motorways surrounding



# ASF kept pigs data of RP

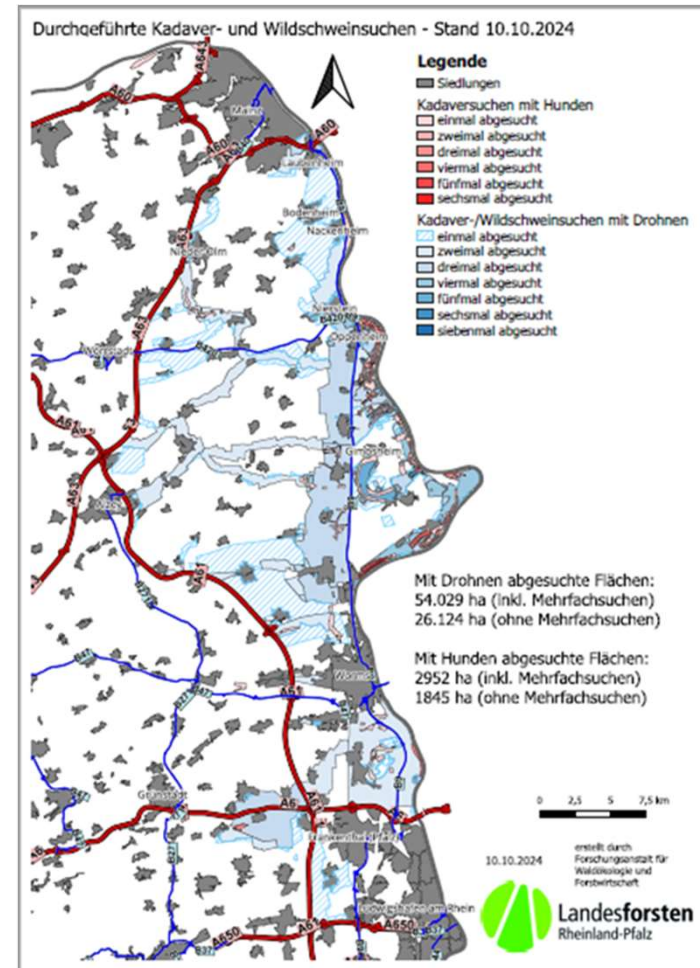
	Anzahl schweinehaltende Betriebe		Anzahl durchgeführter Kontrollen	Anzahl kontrollierter Betriebe
	Anzahl	Davon am 10.10.24 leer		
<b>Sperrzone III</b>	32	1	46	27



All of RP		01.01.-30.06.24	01.07.-08.10.24
ASP-PCR	negativ	19	208
	positiv	0	3*
ASP-ELISA	negativ	6	200
	positiv	0	0

# ASF in RP measures

- Movement restrictions
- Check of pig establishments (no pig industry area)
- Active search for carcasses (in RP >80.000ha)
- Eradication in affected pig establishment
- Epidemiological investigation closed
  
- Fencing ongoing
- Trapping in preparation
  
- Many motorways surrounding



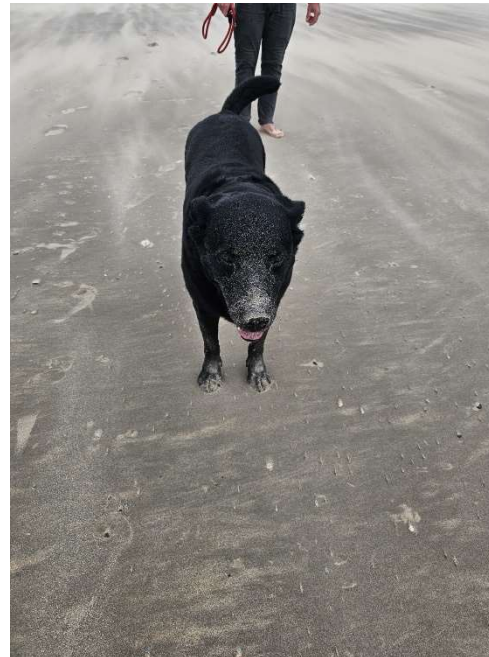
# Conclusions

- Due to high effort and sustainable measures ASF was diminished in some areas in DEU
- sustaining limitation to small affected area after introduction via migrating wild boar in Eastern parts of DEU for years
  
- High risk area after new introduction by jump to HE demarkated
- Implementation of White Zones – trapping started
- No further outbreaks in pig establishments in HE since July 31<sup>st</sup>, 2024 and in RP since August 15<sup>th</sup>, 2024
- No ASF in wild boar surrounding ASF single outbreak establishment in RP, epidemiological investigations conclusive
  
- Surveillance and biosecurity in pig establishments / wild boar / hunting are in place
- Awareness campaigns are ongoing

Thanks to the colleagues of:

- Friedrich-Loeffler-Institute
- Ministry of Hesse
- Ministry of Rhineland Palatinate

Federal Ministry of Food and Agriculture  
Directorate 3  
Unit 323 – Animal Diseases -  
EU-Trade, International Affairs, Crisis Centre  
Rochusstr. 1  
53123 Bonn



Dr. Christina Haarmann  
323@bmel.bund.de  
www.bmel.de  
Tel. +49 30 12 345-3922

[www.bmel.de](http://www.bmel.de)  
@bmel  
@Lebensministerium