



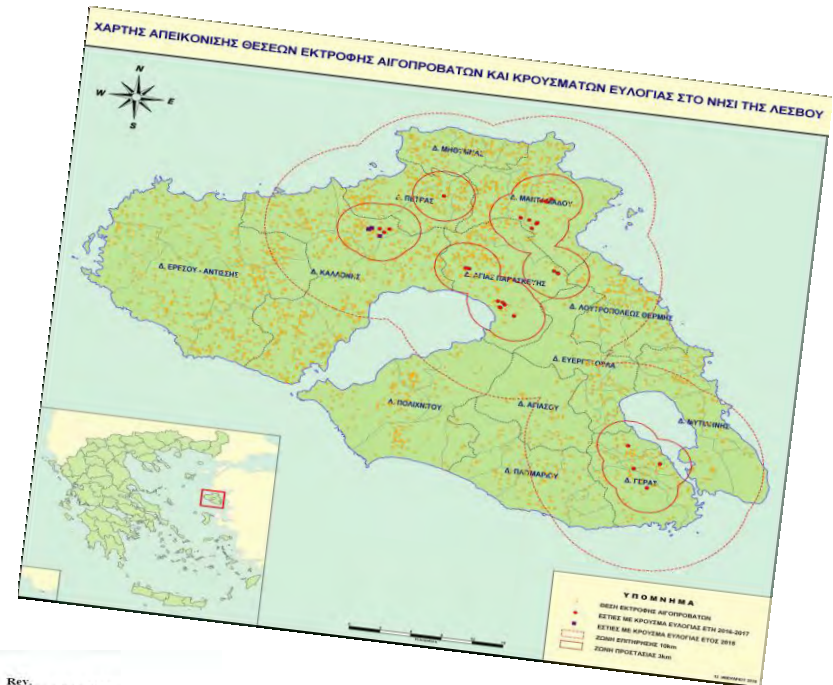
# Sheep pox and goat pox in Greece

*Ministry of Rural Development and Food  
Directorate General of Veterinary Services  
Animal Health Directorate  
Department of Infectious and Parasitic Diseases*

***SCOPAFF meeting, 20.09.2024***

# SGP in Greece

## Last occurrence of SGP in Greece 09/01/2018



  
**HELENIC REPUBLIC**  
Ministry of Rural Development and Food  
Directorate General of Veterinary Services  
Directorate of Animal Health  
Department of Infectious and Parasitic Diseases

Address: 46 Vernazeros st.  
PO: 10438, Athens  
Information: LA. Fragkou, S.-E. Antoniou  
+30.2105271616, +30.2105271604  
Τηλέφωνο: +30.2108252631  
fax: ifragkou@minagric.gr  
e-mail: seantonou@minagric.gr

Rev.  
Athens, 12.01.2018  
Ref. No. 175/6717

To:  
Directorate G-Crisis management in food,  
animals and plants,  
Directorate-Health & Food Safety (DG SANTE)  
European Commission

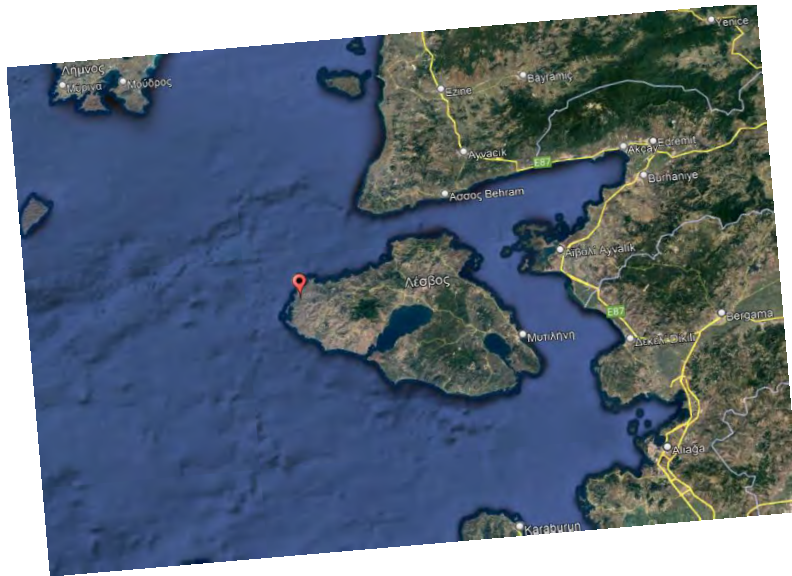
### Report of Sheep Pox Outbreaks in Greece, 12.01.2018

The Greek Veterinary Authorities would hereby like to inform the European Commission and Member States regarding the recent outbreaks of Sheep Pox in Greece.

Since our previous report, on 05 December 2017, five (5) more outbreaks have been confirmed, one (1) in 2017 (08.12.2017) and four (4) in 2018. In all cases, *Capripoxvirus* genome was detected with real time PCR in skin lesions and/or blood samples from affected sheep.

# *SGP in Greece*

**After 6 years:**

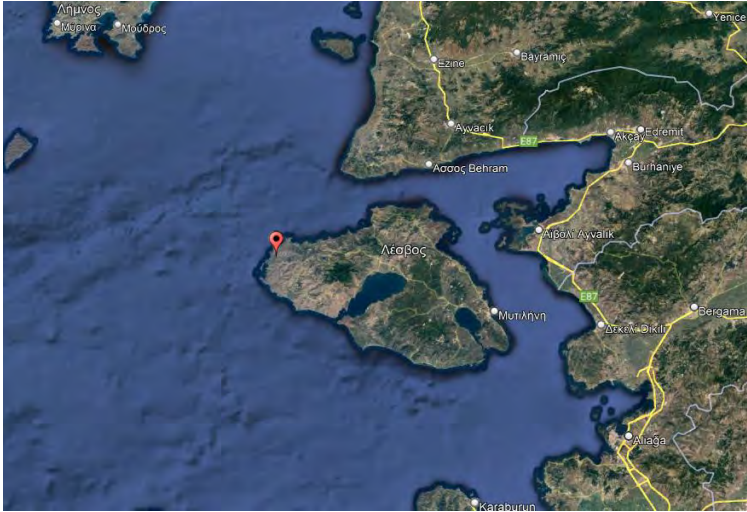


**Lesvos Island**



**Fthiotida RU**

**SGP in Greece**  
**Lesvos Island (October 2023)**  
**Fthiotida RU (December 2023 -March 2024)**  
**nine outbreaks (2023/1-5) (2024/1-4)**



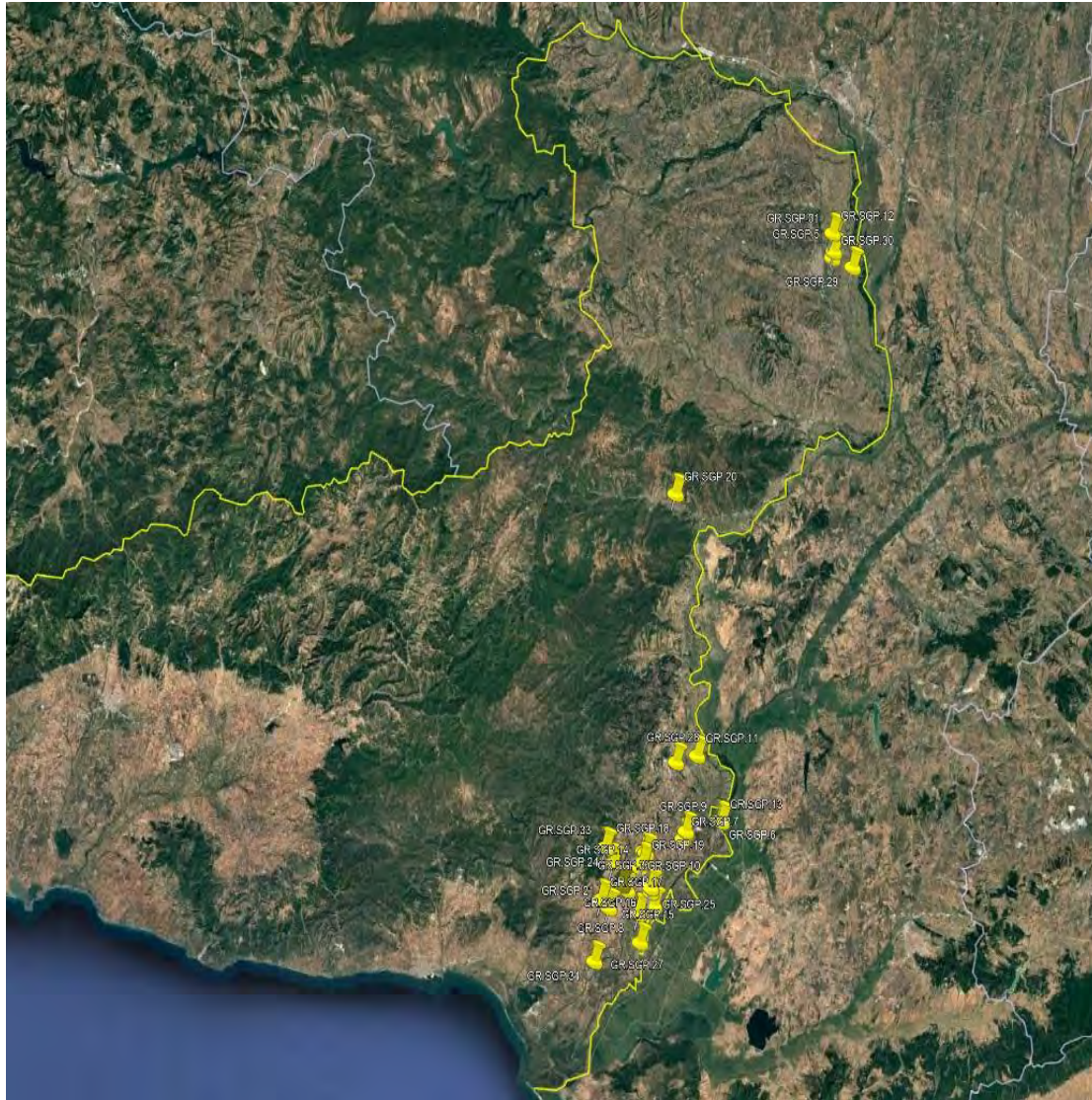
<b>Outbreak ID</b>	<b>Municipality</b>	<b>Municipal Department</b>	<b>Census</b>	<b>Nº clinically affected animals on the official visit</b>	<b>Confirmation date</b>
<b>2023/1</b>	West Lesvos	Sigri	55 sheep	1 case	24.10.2023
<b>2023/2</b>	Locron	Malesini	454 sheep	30 cases 1 ewe dead	8.12.2023
<b>2023/3</b>	Locron	Tragana	257 sheep	5 cases 7 ewes dead	12.12.2023
<b>2023/4</b>	Locron	Atalanti	190 sheep	10 cases	21.12.2023
<b>2023/5</b>	Locron	Atalanti	240 sheep	12 cases 2 deaths	21.12.2023
<b>2024/1</b>	Locron	Atalanti	21 sheep	2 cases	10.01.2024
<b>2024/2</b>	Locron	Atalanti	150 sheep	5 cases	17.01.2024
<b>2024/3</b>	Locron	Atalanti	47 sheep	10 cases	24.01.2024
<b>2024/4</b>	Locron	Atalanti	43 sheep	20 cases	07.03.2024



**Resulted in 1447 sheep and goats culled**  
**Compensations-operating expenses 148.518€**

# **SGP in Greece-Evros RU- August-September 2024**

## **Thirty five outbreaks (2024/5-39)**



- ✓ **First case confirmation 20.08.24**
- ✓ **Across the borders**
- ✓ **Notification by farmers**  
**(fever, anorexia, depression, red papules)**
- ✓ **Fast spread**



# ***SGP in Greece-Evros RU- August-September 2024***

## ***Thirty five outbreaks (2024/5-39)***



- ***census***
- ***production, health and traceability records analysis,***
- ***clinical examination,***
- ***control of the implementation of biosecurity measures,***
- ***passive surveillance (sampling)***

All measures foreseen in Reg. (EU) 2020/687 and the National Contingency Plan No 1747 /386028/ 2023 are implemented:

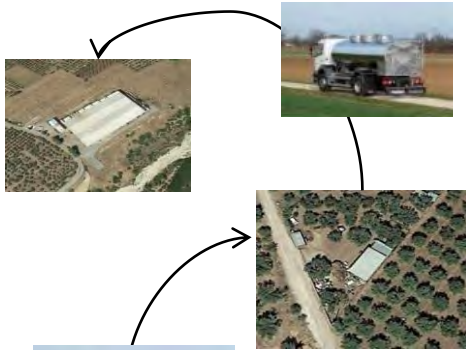
- ✓ **Zoning:** Protection Zone with a radius of 3 Km and Surveillance Zone with a radius of 10 Km around outbreaks
- ✓ **Total Stamping out** of all animals in the affected flocks
- ✓ **Sanitary burial** of carcasses
- ✓ **Animal Movement Control within the zones**
- ✓ **Prohibition of the dispatch** outside the RU of Evros, of live ovine and caprine animals as well as semen, ova, embryos, ovine and caprine animal by-products, hides and skins.
- ✓ **Cleaning and disinfection** of the farms
- ✓ **Enforcement of biosecurity measures** regarding farms, slaughterhouses and commercial activities.
- ✓ **Surveillance of all herds within the Surveillance and the Protection Zone**

# SGP in Greece- Evros RU- August-September 2024

Thirty five outbreaks (2024/5-39)

## Epidemiological Investigation

How far ?



Milk collection



Feedingstuff chain



From where ?



Slaughterhouse



Common pastures

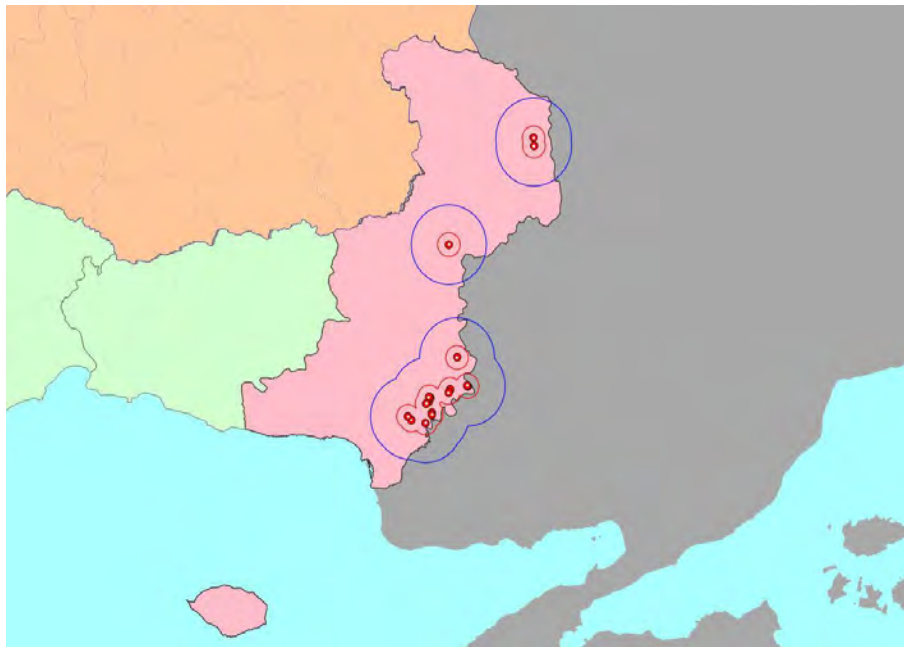


# ***SGP in Greece-Evros RU- August-September 2024***

***Thirty five outbreaks (2024/5-39)***

***(Protection-Surveillance Zone)***

**Additional Veterinary Staff from neighboring regional units  
(Rodopi, Xanthi)**



## ***PROTECTION ZONE (3 Km)***

<b>No of farms</b>	<b>85</b>
<b>No of animals</b>	<b>11986</b>
<b>No of farms checked</b>	<b>49</b>
<b>No of animals checked</b>	<b>8401</b>

## ***SURVEILLANCE ZONE (10 Km)***

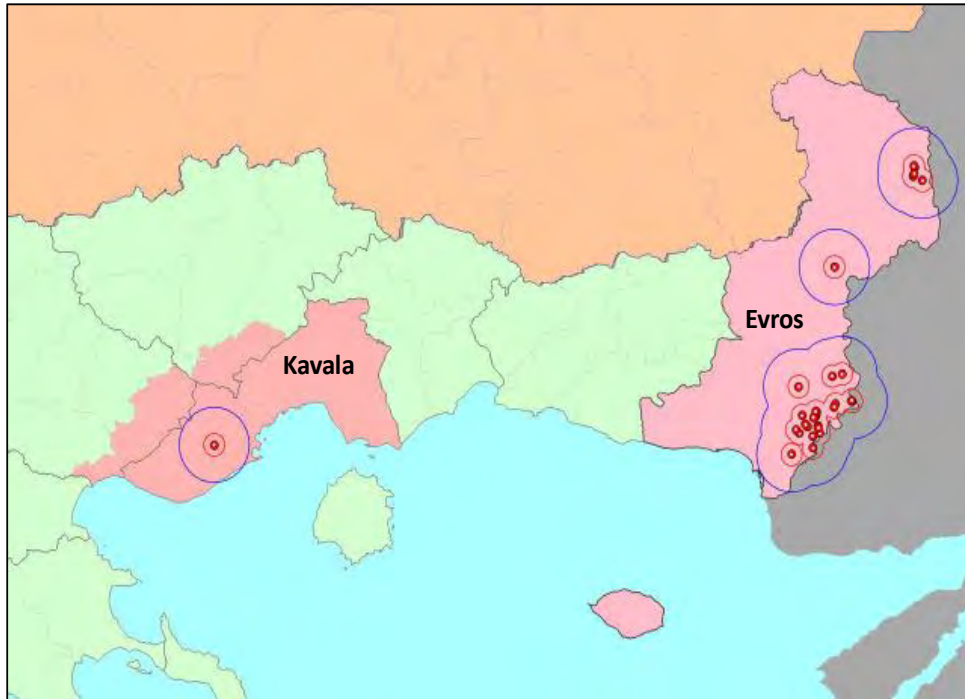
<b>No of farms</b>	<b>79</b>
<b>No of animals</b>	<b>12858</b>
<b>No of farms checked</b>	<b>57</b>
<b>No of animals checked</b>	<b>9540</b>

**6960 sheep and goats culled**



# ***SGP in Greece-Kavala RU- September 2024***

## ***first outbreak (2024/35)***

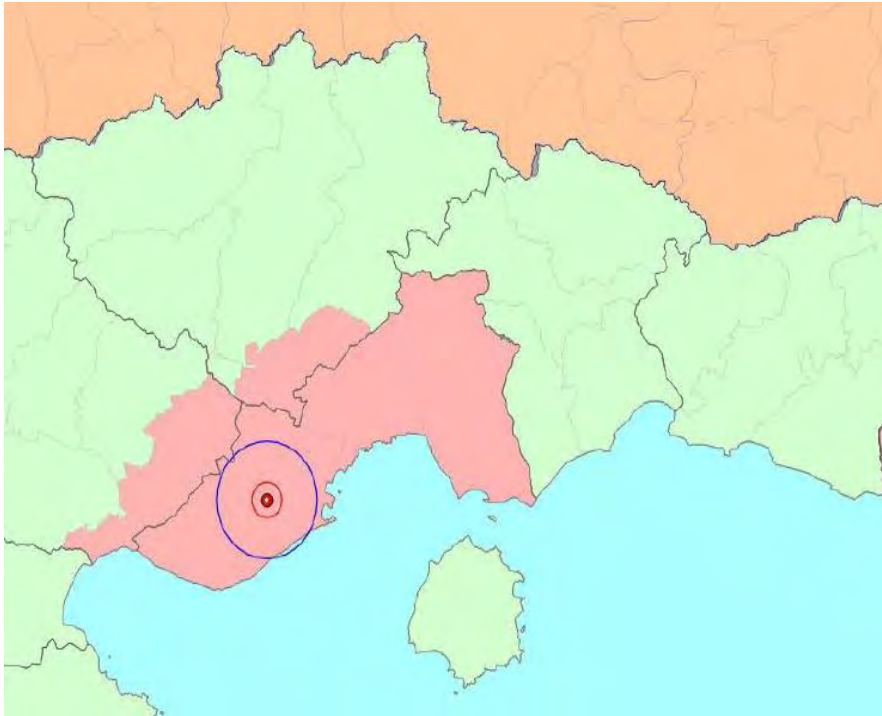


- Sheep and goats farm
- Date of suspicion: 10.09.2024
- Notification by farmer
- Date of confirmation: 13.09.2024  
(real – time PCR)
- 179 sheep and goats
- 3 ewes (fever, anorexia, depression, red papules on the abdominal area, nasal and ocular discharge)

## **Epidemiological investigation still ongoing**

- ✓ Illegal movements of animals?
- ✓ Illegal movements of feeding stuff ?

***SGP in Greece-Kavala RU- September 2024***  
***first case (2024/35)***  
***(Protection-Surveillance Zone)***



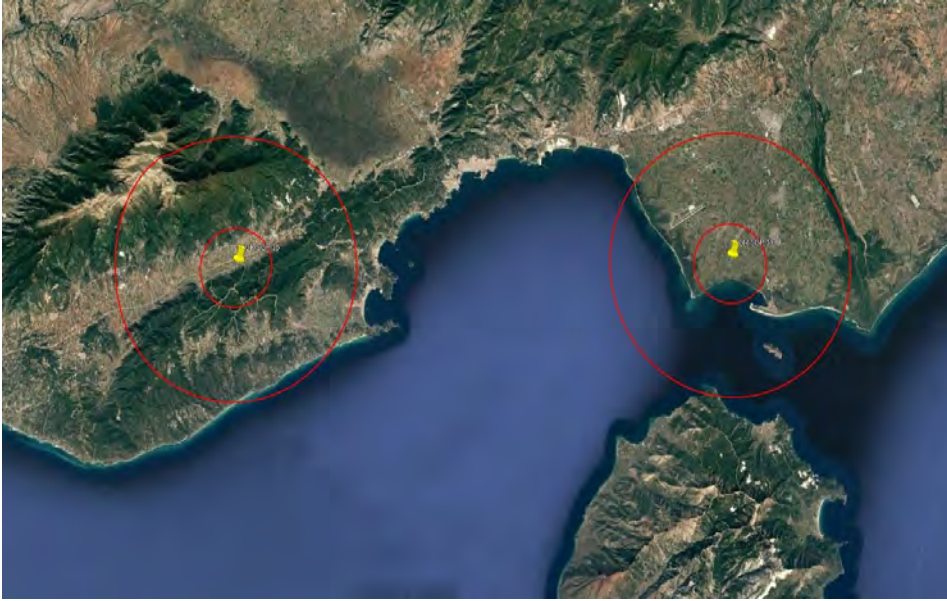
***PROTECTION ZONE (3 Km)***

<b>No of farms</b>	<b>35</b>
<b>No of animals</b>	<b>6542</b>
<b>No of farms checked</b>	<b>35</b>
<b>No of animals checked</b>	<b>6542</b>

***SURVEILLANCE ZONE (10 Km)***

<b>No of farms</b>	<b>115</b>
<b>No of animals</b>	<b>27467</b>
<b>No of farms checked</b>	<b>103</b>
<b>No of animals checked</b>	<b>25302</b>

## ***SGP in Greece-Kavala RU- September 2024 second outbreak (2024/39)***

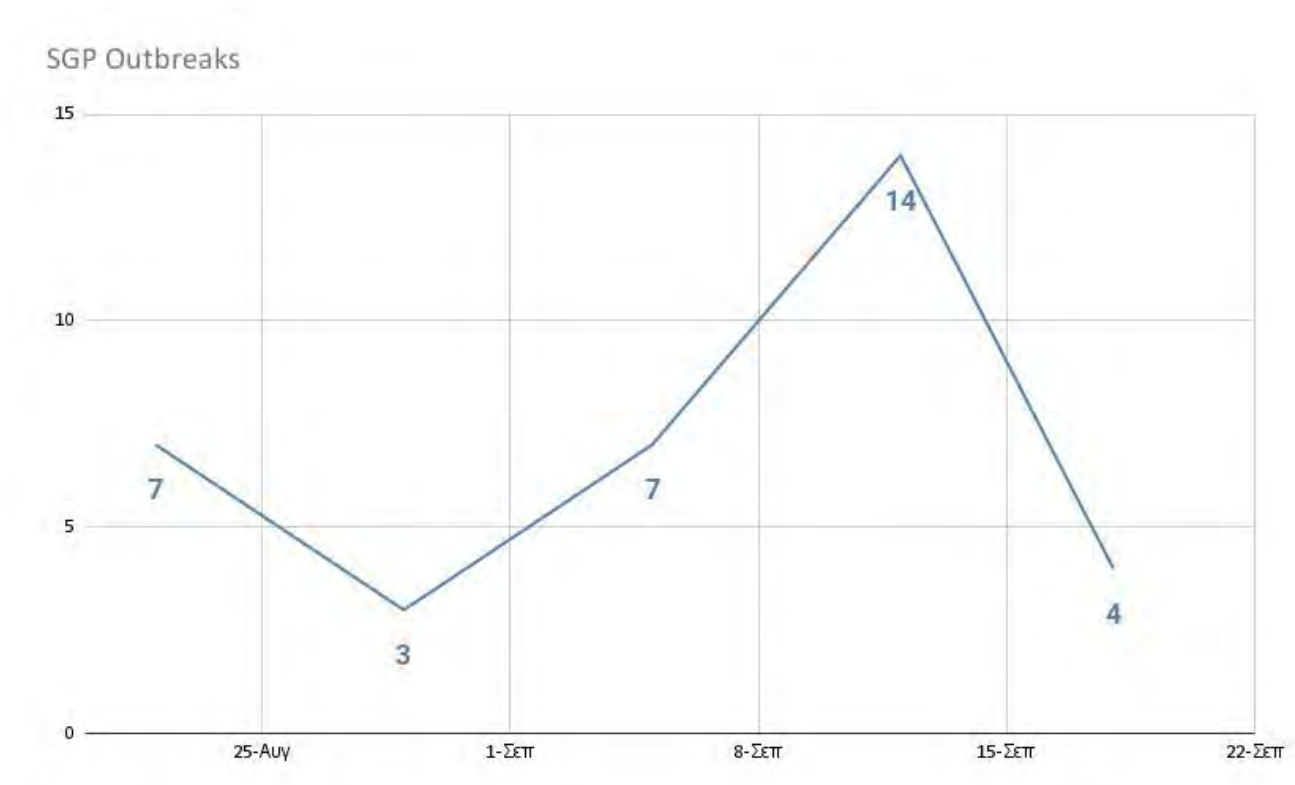


- Date of suspicion: 16.09.2024
- Notification by farmer
- Date of confirmation: 17.09.2024  
(real – time PCR)
- 90 sheep
- 41Km from the first outbreak

### **Epidemiological investigation**

- ✓ No epidemiological link between the two farms (animal movements, milk collection, supply of feeding stuff)
  - ✓ On going investigation

# ***SGP in Greece- August September 2024 (2024/5-39)***



**Number of notified outbreaks per week**

# SGP in Greece- August September 2024 (2024/5-39)

## Preparedness activities-Awareness campaigns in the country

- ✓ Immediate activation of local disease control centers
- ✓ Continuous awareness campaign in the framework of the four transboundary exotic diseases program
- ✓ Awareness campaign during the visits of official veterinarians (PZ, SZ)
- ✓ Meetings
- ✓ Circulars
- ✓ Posters
- ✓ Leaflets



# SGP in Greece- August September 2024 (2024/5-39)

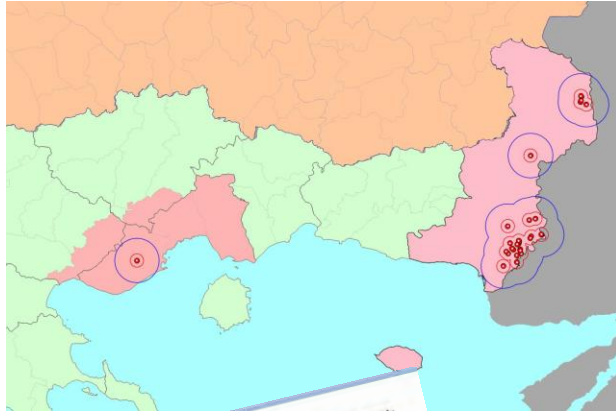
## Measures according Regulation 687/2020 are in place

- Vehicles transporting milk exclusively used in the protection and surveillance zones
- Cleaning and disinfection of all vehicles transporting milk before the entry and after the exit of each holding
- Each holding keeps a register of the movements of the vehicles coming in
- Milk to be pasteurized at 72°C or of equivalent result method
- Controls on movements of animals
- Controls of movements of ABP
- Controls of movements for feeding stuff



# **SGP in Greece- August September 2024 (2024/5-39)**

**COMMISSION IMPLEMENTING  
DECISION  
concerning certain interim  
emergency measures relating to  
sheep pox and goat pox in certain  
Member States**



**ANNEX**

**A. Protection and surveillance zones established around the confirmed outbreaks**

Regional code and AEI reference number of the outbreak	Area established as protection and surveillance zone, part of the restricted zone in Greece referred to in Article 2	Date next applicable
Regional code of Evros	<b>Establishment zone:</b> Three parts of the regional unit of Evros, situated within a total radius of 3 kilometres, based on UTM 30, ETE889 coordinates: Lat. 41.8598111, Long. 26.5405556 (2024/5); Lat. 40.9414278, Long. 26.3342 (2024/6); Lat. 40.94341, Long. 26.27598 (2024/7); Lat. 40.87678, Long. 26.20253 (2024/8); Lat. 40.92349, Long. 26.28072 (2024/9); Lat. 40.90075, Long. 26.20281 (2024/10); Lat. 41.02463, Long. 26.20281 (2024/11); Lat. 40.92349, Long. 26.3342 (2024/12); Lat. 41.02463, Long. 26.3342 (2024/13); Lat. 40.92349, Long. 26.3342 (2024/14); Lat. 40.92349, Long. 26.3342 (2024/15); Lat. 40.92349, Long. 26.3342 (2024/16); Lat. 40.92349, Long. 26.3342 (2024/17); Lat. 40.92349, Long. 26.3342 (2024/18); Lat. 40.92349, Long. 26.3342 (2024/19); Lat. 40.92349, Long. 26.3342 (2024/20); Lat. 40.92349, Long. 26.3342 (2024/21); Lat. 40.92349, Long. 26.3342 (2024/22); Lat. 40.92349, Long. 26.3342 (2024/23); Lat. 40.92349, Long. 26.3342 (2024/24); Lat. 40.92349, Long. 26.3342 (2024/25); Lat. 40.92349, Long. 26.3342 (2024/26); Lat. 40.92349, Long. 26.3342 (2024/27); Lat. 40.92349, Long. 26.3342 (2024/28); Lat. 40.92349, Long. 26.3342 (2024/29); Lat. 40.92349, Long. 26.3342 (2024/30); Lat. 40.92349, Long. 26.3342 (2024/31); Lat. 40.92349, Long. 26.3342 (2024/32); Lat. 40.92349, Long. 26.3342 (2024/33); Lat. 40.92349, Long. 26.3342 (2024/34); Lat. 40.92349, Long. 26.3342 (2024/35); Lat. 40.92349, Long. 26.3342 (2024/36); Lat. 40.92349, Long. 26.3342 (2024/37); Lat. 40.92349, Long. 26.3342 (2024/38); Lat. 40.92349, Long. 26.3342 (2024/39); Lat. 40.92349, Long. 26.3342 (2024/40); Lat. 40.92349, Long. 26.3342 (2024/41); Lat. 40.92349, Long. 26.3342 (2024/42); Lat. 40.92349, Long. 26.3342 (2024/43); Lat. 40.92349, Long. 26.3342 (2024/44); Lat. 40.92349, Long. 26.3342 (2024/45); Lat. 40.92349, Long. 26.3342 (2024/46); Lat. 40.92349, Long. 26.3342 (2024/47); Lat. 40.92349, Long. 26.3342 (2024/48); Lat. 40.92349, Long. 26.3342 (2024/49); Lat. 40.92349, Long. 26.3342 (2024/50); Lat. 40.92349, Long. 26.3342 (2024/51); Lat. 40.92349, Long. 26.3342 (2024/52); Lat. 40.92349, Long. 26.3342 (2024/53); Lat. 40.92349, Long. 26.3342 (2024/54); Lat. 40.92349, Long. 26.3342 (2024/55); Lat. 40.92349, Long. 26.3342 (2024/56); Lat. 40.92349, Long. 26.3342 (2024/57); Lat. 40.92349, Long. 26.3342 (2024/58); Lat. 40.92349, Long. 26.3342 (2024/59); Lat. 40.92349, Long. 26.3342 (2024/60); Lat. 40.92349, Long. 26.3342 (2024/61); Lat. 40.92349, Long. 26.3342 (2024/62); Lat. 40.92349, Long. 26.3342 (2024/63); Lat. 40.92349, Long. 26.3342 (2024/64); Lat. 40.92349, Long. 26.3342 (2024/65); Lat. 40.92349, Long. 26.3342 (2024/66); Lat. 40.92349, Long. 26.3342 (2024/67); Lat. 40.92349, Long. 26.3342 (2024/68); Lat. 40.92349, Long. 26.3342 (2024/69); Lat. 40.92349, Long. 26.3342 (2024/70); Lat. 40.92349, Long. 26.3342 (2024/71); Lat. 40.92349, Long. 26.3342 (2024/72); Lat. 40.92349, Long. 26.3342 (2024/73); Lat. 40.92349, Long. 26.3342 (2024/74); Lat. 40.92349, Long. 26.3342 (2024/75); Lat. 40.92349, Long. 26.3342 (2024/76); Lat. 40.92349, Long. 26.3342 (2024/77); Lat. 40.92349, Long. 26.3342 (2024/78); Lat. 40.92349, Long. 26.3342 (2024/79); Lat. 40.92349, Long. 26.3342 (2024/80); Lat. 40.92349, Long. 26.3342 (2024/81); Lat. 40.92349, Long. 26.3342 (2024/82); Lat. 40.92349, Long. 26.3342 (2024/83); Lat. 40.92349, Long. 26.3342 (2024/84); Lat. 40.92349, Long. 26.3342 (2024/85); Lat. 40.92349, Long. 26.3342 (2024/86); Lat. 40.92349, Long. 26.3342 (2024/87); Lat. 40.92349, Long. 26.3342 (2024/88); Lat. 40.92349, Long. 26.3342 (2024/89); Lat. 40.92349, Long. 26.3342 (2024/90); Lat. 40.92349, Long. 26.3342 (2024/91); Lat. 40.92349, Long. 26.3342 (2024/92); Lat. 40.92349, Long. 26.3342 (2024/93); Lat. 40.92349, Long. 26.3342 (2024/94); Lat. 40.92349, Long. 26.3342 (2024/95); Lat. 40.92349, Long. 26.3342 (2024/96); Lat. 40.92349, Long. 26.3342 (2024/97); Lat. 40.92349, Long. 26.3342 (2024/98); Lat. 40.92349, Long. 26.3342 (2024/99); Lat. 40.92349, Long. 26.3342 (2024/100);	

- ✓ Zones and measures currently under review in cooperation with EC
- ✓ Epidemiological investigation is ongoing
- ✓ Working meetings regarding measures to be implemented were held on 21.08.2023 (Orestiada & Feres)
- ✓ The EURL for Capripox viruses will receive samples from the NRL (both outbreaks 2024/5 and 2024/6 Evros RU), for phylogenetic analyses, in order to further assist the epidemiological investigation

Thank  
You