

African Swine fever in wild boar in Belgium

PAFF Committee 16 January 2019



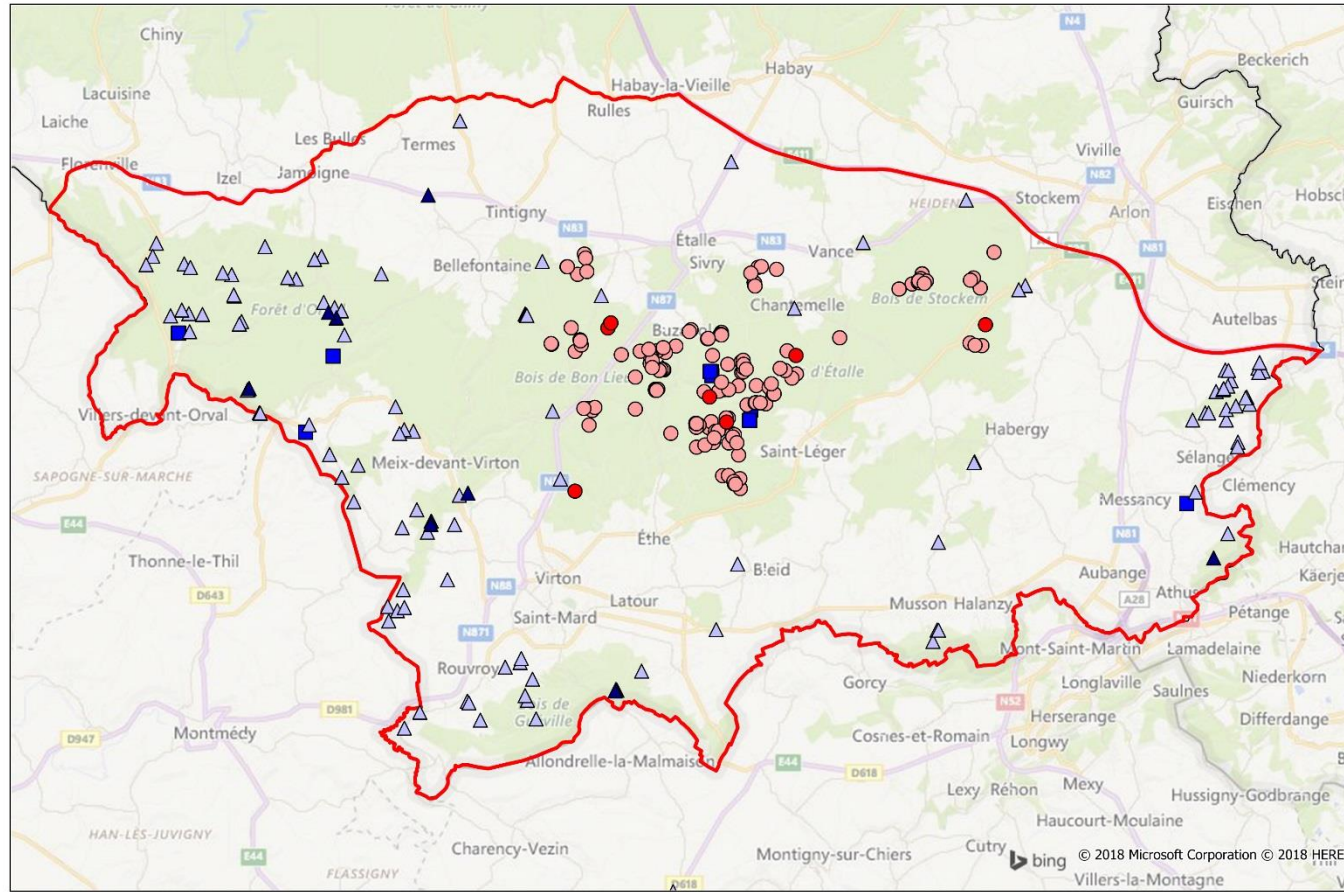
Confirmed cases in wild boar

On the 13th January 2019 :

- **973 wild boars sampled**
- **323 confirmed cases of AVP in wild boar**
 - **321 in the areas in Part II of the annex of Decision 2014/709/EU**
 - **2 in the areas in Part I of the annex of Decision 2014/709/EU**
(2 young wild boar shot in de framework of intensified hunting)



Confirmed cases in wild boar 16 November 2018

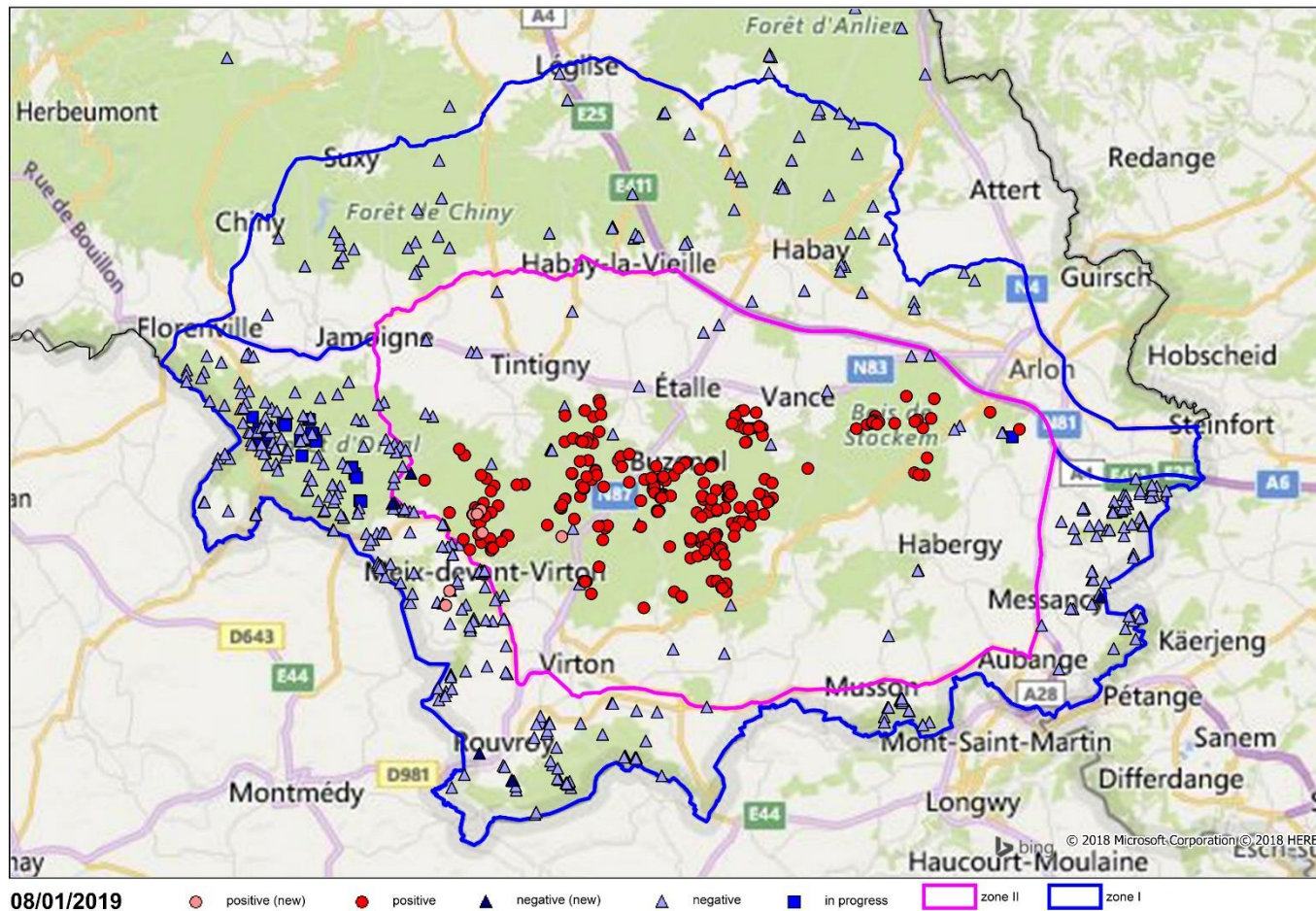


16-11-2018

● positive ● positive (new) ▲ negative ▲ negative (new) ■ in progress ■ infected zone



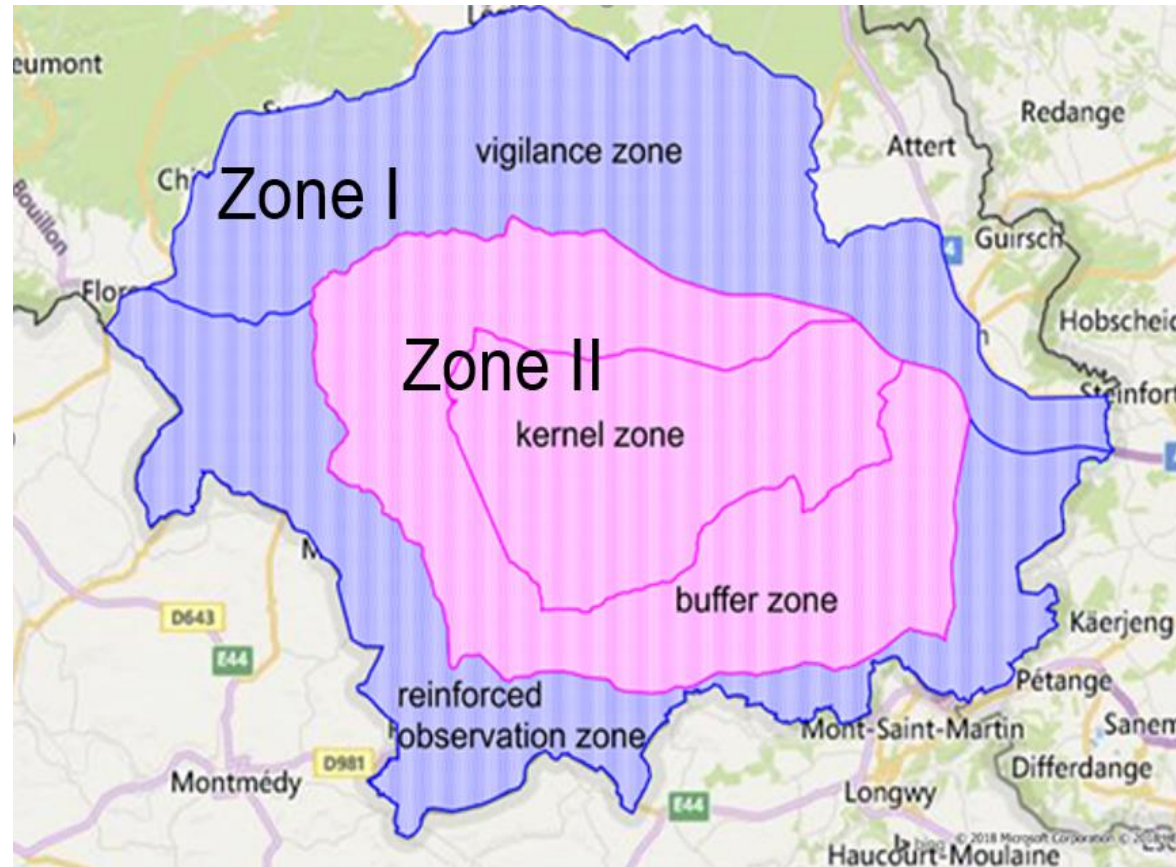
Confirmed cases in wild boar 8 January 2018



No outbreaks in domestic pigs!



Measures in the infected zone (Wal. Region) Wild boar



Measures in the infected zone (Wal. Region)

Wild boar

Area in part II of the annex

- Ban on hunting wild boar
- Ban on feeding wild boar
- Forest works are allowed under strict conditions (planning of the works & disinfection of the equipment)
- Biosecurity measures
- Searching, collection and testing of all wild boar found dead
- Fence network completed on the northern, western and southern sides of the buffer zone (other sides with artificial barriers, e.g. highways)



Measures in the infected zone (Wal. Region)

Wild boar

Area in part I of the annex

- Ban on feeding wild boar
- Access to the forest allowed
- Searching, collection and testing of all wild boar found dead



Measures in the infected zone (Wal. Region)

Wild boar

Area in part I of the annex

– Reduction (eradication) of the wild boar population

- Hunters must organize wild boar culling under strict conditions
- Trained hunters and forest guards
- Shooting day/night, with or without baiting,... drive hunting with dogs forbidden, single hunting and silent drives allowed
- Trapping and culling of wild boar
- Biosecurity measures
- Testing of shot wild boar
- Rendering of carcasses of shot wild boar
- 100 € compensation per wild boar for the management of the culled wild boar with respect of biosecurity rules and transport to the collection center



Measures in the infected zone (Wal. Region)

Wild boar

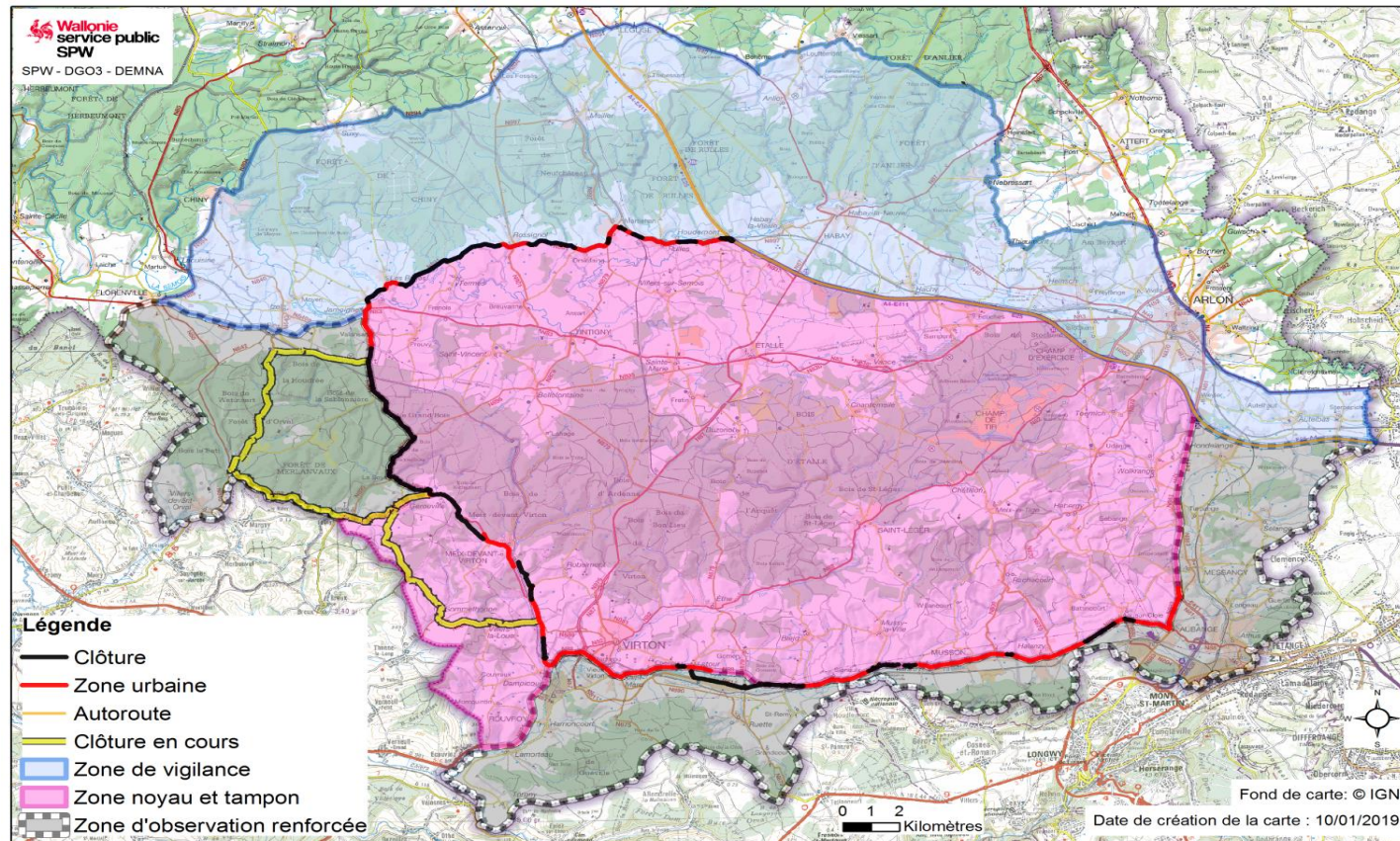
Area in part I of the annex

- Following the confirmation of the first two positive cases in wild boar outside the area annex II
 - Enhanced passive surveillance for dead wild boar is intensified in the zone surrounding these 2 positive cases
 - Eradication of the wild boar population has been suspended until further evaluation of the epidemiological situation



Measures in the infected zone (Wal. Region) Wild boar

- New fences closer to the French border



Measures in all regions

Wild boar

- Call center to notify dead wild boar
- Collection and testing all wild boar found dead
- Hunting to reduce the wild boar population



National measures - Pigs

- Additional measures following the introduction of ASF
 - All assemblies of pigs prohibited
 - Only 1-1 transports of pigs
 - No visitors allowed to pig farms if not needed
 - All introduced pigs must pass quarantine
 - Increased surveillance: no treatment of sick pigs without sampling for ASF tests: **2 787 pigs tested on 743 pig farms: all negative!**
- Raising awareness of farmers, hunters and vets



Collaboration with neighbouring countries

- Regular meetings for exchange of knowledge and experience and aligning measures taken
- Meeting of the ministers of agriculture of Wallonia and France

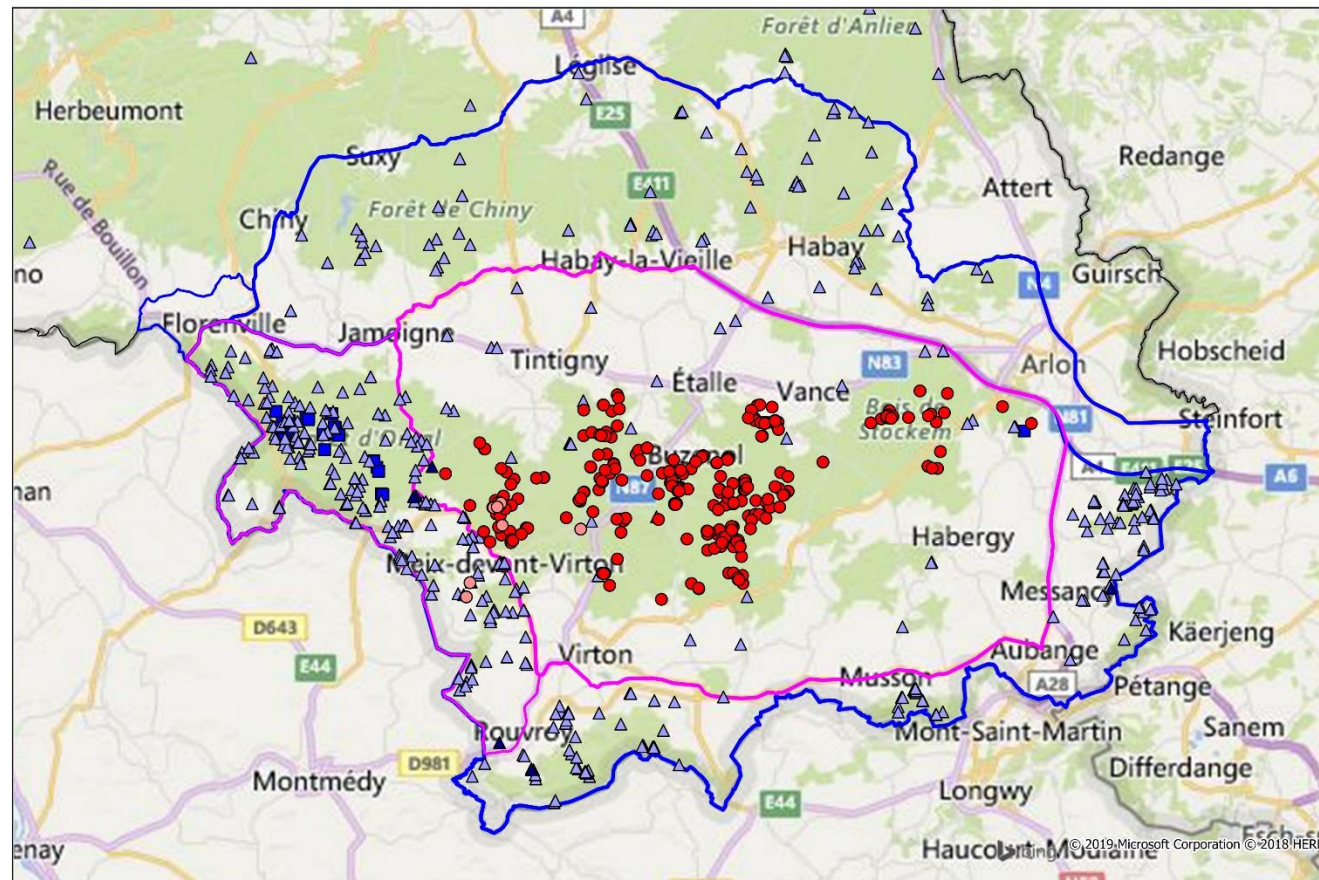


EU Vet mission 7 - 8 January 2019

- Evaluation the current situation
- Evaluation of the measures taken
- Explore how to enhance the reduction of the wild boar population in general and specifically in the Western part of the former reinforced observation zone
- Advice for the further strategy



Proposal to modify the annex to Decision 2014/709/EU



08/01/2019 ● positive (new) ● positive ▲ negative (new) ▲ negative ■ in progress ■ zone II ■ zone I



Conclusions

- Measures for the control of ASF are in place
- All concerned partners are actively involved
- Close collaboration with neighboring countries
- Prepared in case an outbreak would occur in domestic pigs



Thank you for your attention

