



European Commission



Directorate-General for  
Health & Consumers

# Report on the monitoring and testing of ruminants for the presence of Transmissible Spongiform Encephalopathy (TSE) in the EU in 2010







European Commission

# **Report on the monitoring and testing of ruminants for the presence of Transmissible Spongiform Encephalopathy (TSE) in the EU in 2010**

Directorate G - Veterinary and International Affairs

Unit G4 - Food, Alert System and Training

December 2011

## TABLE OF CONTENTS

1. SUMMARY.....	4
1.1. Bovine animals.....	4
1.2. Ovine and caprine animals.....	4
2. MONITORING PROGRAMMES, SAMPLING AND DIAGNOSTIC METHODS APPLICABLE IN 2010.....	5
2.1. Legal basis.....	5
2.2. BSE monitoring of bovine animals.....	5
2.3. TSE monitoring of ovine and caprine animals.....	6
2.4. Sampling and testing for TSE monitoring.....	7
2.5. Sampling and testing for the prion protein genotype determination in ovine animals.....	7
3. ANNUAL AND MONTHLY REPORTS.....	9
4. SUMMARY OF THE BSE TESTING IN BOVINE ANIMALS DURING 2010.....	12
4.1. Sampling.....	12
4.2. BSE positive cases.....	16
4.3. Testing by target group.....	22
4.4. Age distribution of BSE positive cases.....	28
4.5. Year of birth distribution of BSE positive cases detected since 2001.....	32
4.6. Prevalence of BSE in different age categories in 2010.....	34
4.7. BSE in young animals.....	42
5. SUMMARY OF TSE TESTING IN OVINE AND CAPRINE ANIMALS DURING 2010.....	44
5.1. Sampling.....	44
5.2. Positive cases.....	46
5.3. Atypical cases.....	58
5.4. TSE discriminatory tests.....	61
5.5. Age distribution of TSE positive cases in ovine animals.....	62
5.6. Genotyping.....	65

## LIST OF ACRONYMS

<b>AM :</b>	Ante-mortem inspection
<b>BSE :</b>	Bovine spongiform encephalopathy
<b>CWD:</b>	Chronic wasting disease
<b>DNA :</b>	Deoxyribonucleic acid
<b>EU 15 :</b>	The 15 countries that were members of the European Union before 1 May 2004
<b>EU 15(-UK) :</b>	The EU 15 except the United Kingdom
<b>EU 12</b>	The 12 countries that joined the European Union since 1 May 2004
<b>EU 27 :</b>	EU 15 + EU 12
<b>EU 27(-UK) :</b>	The EU 27 except the United Kingdom
<b>EU 27(-CY)</b>	The EU 27 except Cyprus
<b>Na:</b>	not available
<b>NSP :</b>	National scrapie plan
<b>TSE:</b>	Transmissible spongiform encephalopathy
<b>TSE Regulation:</b>	Regulation (EC) No 999/2001

## **1. SUMMARY**

### **1.1. Bovine animals**

In 2010, a total of 7 504 787 bovine animals were tested in the EU 27 in the framework of the BSE monitoring programmes. 45 bovine animals turned out positive.

1 173 069 risk bovine animals and 6 330 680 healthy animals slaughtered for human consumption were tested by rapid tests. 378 animals were tested in the framework of culling of animals with an epidemiological connection to a BSE case. In addition, 660 bovine animals were tested in the framework of passive surveillance (animals reported as official BSE suspects. 100 % of positive cases were detected by the active monitoring (testing of risk animals, healthy slaughtered and culled cattle) and 0 % were detected by passive surveillance.

No BSE cases were found in Belgium, Bulgaria, Cyprus, Czech Republic, Denmark, Estonia, Finland, Germany, Greece, Hungary, Italy, Latvia, Lithuania, Luxembourg, Malta, Romania, Slovenia and Sweden. The number of BSE cases and the overall prevalence in tested animals decreased by respectively 33 % and 33 % in 2010 compared to 2009.

### **1.2. Ovine and caprine animals**

In 2010, a total of 344 211 ovine and 142 668 caprine animals were tested in the EU 27 in the framework of the TSE monitoring programmes. 1112 ovine and 435 caprine animals turned out positive.

343 452 ovine animals were tested by active monitoring, while 759 were animals reported as official TSE suspects and therefore subjected to laboratory examination. In caprine animals, the numbers of tests in the respective groups were 141 558 (active monitoring) and 1 110 (TSE suspects). Some 436 and 52 TSE cases in respectively sheep and goats confirmed in 2010 were subjected to discriminatory testing. None of them have been confirmed to be BSE.

All Member States submitted information on the the TSE testing of bovine, ovine and caprine animals. In addition to the Member States, Norway also submitted information on their TSE testing programmes.

Further information: Health and Consumers Directorate-General Unit G4 fax: +32-2-296.90.62; e-mail: <a href="mailto:SANCO-TSE-MONITORING@ec.europa.eu">SANCO-TSE-MONITORING@ec.europa.eu</a>
--

## **2. MONITORING PROGRAMMES, SAMPLING AND DIAGNOSTIC METHODS APPLICABLE IN 2010**

### **2.1. Legal basis**

Animals suspected of a TSE shall be examined in accordance with Article 12.2 of Regulation (EC) No 999/2001 of the European Parliament and of the Council laying down rules for the prevention, control and eradication of certain transmissible spongiform encephalopathies as amended (TSE Regulation). The legal framework for the active monitoring of ruminants for the presence of TSE is laid down in Article 6 of TSE Regulation and specified in its Annex III Chapter A.

The EU-15 Member States and Slovenia were authorised in 2009 to apply a revised BSE monitoring programme with an increased age limit for BSE testing as a result of Decision 2009/179/EC.. Cyprus was added to the list of authorised Member States on February 5, 2010 by Decision 2010/66/EC amending Decision 2009/719/EC, and actually stopped testing healthy cattle between 30 and 48 months of age at the slaughterhouse as of March 1, 2010.

The legal basis for the sample collection and for the test methods is laid down in Chapter C of Annex X to TSE Regulation. From 2005, Annex X (as amended by Commission Regulation (EC) No 36/2005) also provides for mandatory discriminatory testing for BSE of TSE cases detected in small ruminants.

The legal basis for the testing for the determination of the prion protein genotypes is laid down in points 8.1 and 8.2 of Chapter A in Annex III to TSE Regulation.

The EU legislation on TSE monitoring is summarised in Table 1.

### **2.2. BSE monitoring of bovine animals**

The monitoring of bovine animals for the presence of BSE is divided into the following target groups:

#### **(1) Fallen Stock**

Bovine animals which have died or have been killed on the farm or in transport, but not slaughtered for human consumption nor killed in the framework of an epidemic. Member States may decide to derogate from this provision in remote areas with a low animal density, where no collection of dead animals is organised. The derogation shall not cover more than 10% of the bovine population in the Member State.

#### **(2) Emergency slaughtered animals**

Bovine animals subject to "special emergency slaughtering" as described in relevant Community legislation.

### **(3) Animals with clinical signs at AM**

Bovine animals sent for normal slaughter but the slaughter of which was deferred because they were:

- (a) suspected of suffering from a disease which is communicable to humans and to animals or showing symptoms or being in a general condition such as to indicate that such a disease may occur.
- (b) showing symptoms of a disease or of a disorder of their general conditions which is likely to make their meat unfit for human consumption.

### **(4) Healthy slaughtered animals**

Bovine animals subject to normal slaughter for human consumption and animals without clinical signs of disease slaughtered in the context of a disease eradication campaign other than BSE.

### **(5) Animals culled under BSE eradication**

Birth cohorts (bovine animals born in a herd within 1 year before or after the birth of a BSE case), rearing cohorts (bovine animals reared together with a BSE case during the first year of their life), offspring and any other bovine animals killed because of an epidemiological link to a BSE case.

### **(6) Animals clinically suspected of being infected by BSE**

Bovine animals reported as suspect of TSE as defined in Article 3 of the TSE Regulation and subject to the measures described in Articles 12 and 13.

## **2.3. TSE monitoring of ovine and caprine animals**

The testing of ovine and caprine animals for the presence of TSE is divided into the following target groups:

### **(7) Healthy animals which are slaughtered for human consumption**

Member States with major ovine population shall test an annual minimum sample size of healthy slaughtered animals over 18 months of age.

Where a Member State experiences difficulty in collecting sufficient numbers of healthy slaughtered animals to reach its allotted minimum sample size, it may choose to replace a maximum of 50% of its minimum sample size by testing dead animals at the ratio of one to one and in addition to the minimum sample size set out for dead animals.

### **(8) Animals which are not slaughtered for human consumption**

This target group contains almost exclusively fallen stock, with a few emergency slaughtered animals and animals with clinical signs at AM which have died or been killed, but which were not killed in the framework of an



epidemic or slaughtered for human consumption. There are minimum samples sizes of both ovine and caprine animals over 18 months of age.

#### **(9) Animals culled under TSE eradication**

Including animals additionally tested on infected herds before culling measures were applied.

#### **(10) Animals clinically suspected of being infected by a TSE**

Ovine and caprine animals reported as suspect of TSE as defined in Article 3 of the TSE Regulation and subject to the measures described in Articles 12 and 13.

### **2.4. Sampling and testing for TSE monitoring**

Samples collected in the context of TSE active monitoring are screened by one of the rapid tests listed in Annex X to the TSE Regulation. Confirmation tests from inconclusive or positive results in the active monitoring and analysis of samples from suspects are performed by histopathology, immunocytochemistry, immunoblotting or by demonstration of characteristic fibrils by electron microscopy.

Further discrimination between BSE and scrapie has become mandatory from January 2005 on by Commission Regulation (EC) No 36/2005. To this purpose the discriminatory immunoblottings, immunocytochemistry and enzyme linked immunosorbent assay were laid down in Chapter C point 3.2.(c) of Annex X to TSE Regulation. In addition the mouse bio-assay method has to be applied to certain samples for final confirmation or exclusion of BSE.

### **2.5. Sampling and testing for the prion protein genotype determination in ovine animals**

The prion protein genotype shall be determined for:

- (1) All TSE positive ovine animals.
- (2) A random sample of ovine animals selected from animals over 18 months of age.

The alleles were defined by reference to the amino acids encoded by codons 136, 141, 154 and 171 of the prion protein gene. Routine methods for the collection of samples and DNA genotyping are used.

**Table 1: Summary of the EU legislation on TSE monitoring in 2010**

<b>EU 27</b>	
<b>Legal provisions</b>	Regulation (EC) No 999/2001 as amended Commission Decision 2007/182/EC as amended Commission Decision 2009/719/EC as amended
<b>Bovine animals</b>	
<b>Special emergency slaughter</b>	For EU-15 + Slovenia + Cyprus*: all > 48 months  For other MS : all > 24 months
<b>Clinical signs at AM</b>	
<b>Fallen stock</b>	
<b>Animals slaughtered for human consumption</b>	For EU-15 + Slovenia + Cyprus*: all > 48 months  For other MS : all > 30 months
<b>BSE suspects</b>	All
<b>Ovine and caprine animals</b>	
<b>Animals slaughtered for human consumption</b>	Minimal annual sample size of animals over 18 months of age in MS with major populations
<b>Animals not slaughtered for human consumption</b>	Minimal annual sample size of animals over 18 months of age depending on size of MS populations of ewes or goats
<b>Animals in infected flocks</b>	Minimal sample size in animals over 18 months of age
<b>Other than bovine, ovine and caprine animals: voluntary</b>	

\* as from March 1, 2010

### 3. ANNUAL AND MONTHLY REPORTS

In accordance with Article 6.4 and as specified in Chapter B.I of Annex III to TSE Regulation, Member States shall submit an annual report to the Commission on the monitoring programme performed and the outcome of it.

All this information has been electronically submitted by the Member States, and introduced and processed by the Commission in a database in order to summarise the information provided and to elaborate summary tables to be distributed within the Commission and to the Member States and Norway. The data contained in the present report only refer to the test results obtained from samples taken from 1<sup>st</sup> January 2010 to 31<sup>st</sup> December 2010. However, as certain Member States may calculate their annual statistics using other reporting criteria (i.e. based on the date of final test results rather than the date of sampling), the data in this report may slightly differ from the national figures published by the Member States for 2010. The present report should be considered as a final update of the information received and as the Commission summary report for 2010 as requested by Article 6.4 of the TSE Regulation.

The target groups mentioned in this report were divided into the following categories:

#### (1) Bovine animals:

##### (a) Active Monitoring

- Fallen stock
- Emergency slaughter
- Animals with clinical signs at AM
- Healthy slaughtered animals
- Animals culled in connection to a BSE case.

Fallen stock, emergency slaughtered animals and animals with clinical signs at ante-mortem inspection are considered as "**risk animals**".

##### (b) Passive surveillance

Animals reported as official BSE suspects by the farmer or the veterinary practitioner and subject to laboratory examination.

The age limits used in testing different target groups of bovine animals are summarised in Table 2.

#### (2) Ovine and caprine animals

##### (a) Active Monitoring

- Animals not slaughtered for human consumption: risk animals containing almost exclusively fallen stock with a few tests in

emergency slaughtered animals and animals with clinical signs at AM.

- Healthy animals slaughtered for human consumption
- Animals culled in a herd where an animal has been declared TSE positive including animals additionally tested on infected herds before culling measures were applied.

(b) Passive Surveillance

- Animals reported as official TSE suspects by the farmer or the veterinary practitioner and subject to laboratory examination.

**Table 2: Age limits used in sampling of bovine animals in 2010**

	Age limit in months					
	Fallen Stock	Emergency slaughtered	Clinical signs at AM	Healthy slaughtered	BSE eradication	BSE suspects
<b>Belgique/België</b>			> 48		> 24	No age limit
<b>Bulgaria</b>		> 24		> 30		No age limit
<b>Ceská Republika</b>		> 24		> 30		No age limit
<b>Danmark</b>			> 48		> 24	No age limit
<b>Deutschland</b>			> 48			No age limit
<b>Eesti</b>		> 24		> 30		No age limit
<b>Ellas</b>			> 48			No age limit
<b>España</b>		> 36		> 48		No age limit
<b>France</b>		> 24		> 48	> 24	No age limit
<b>Ireland</b>			> 48			No age limit
<b>Italia</b>			> 48			No age limit
<b>Kypros*</b>		> 24		> 48	> 48	No age limit
<b>Latvija</b>		> 24		> 30		No age limit
<b>Lietuva</b>		> 24		> 30		No age limit
<b>Luxembourg</b>	> 24		> 48		> 24	No age limit
<b>Magyarország</b>		> 24		> 30		No age limit
<b>Malta</b>		> 24		> 30		No age limit
<b>Nederland</b>			> 48			No age limit
<b>Österreich</b>	> 24		> 48			No age limit
<b>Polska</b>		> 24		> 30		No age limit
<b>Portugal</b>		> 36		> 48	> 24	No age limit
<b>Romania</b>		> 24		> 30		No age limit
<b>Slovenija</b>			> 48			No age limit
<b>Slovensko</b>		> 24		> 30		No age limit
<b>Suomi/Finland</b>			> 48			No age limit
<b>Sverige</b>			> 48			No age limit
<b>United Kingdom</b>			> 48			No age limit
<b>Norway</b>		> 24		> 30		No age limit

\* since March 1, 2010

The names of the 27 Member States in 2010 are quoted in this report in their own language or by using the ISO code or the English name.

<b>Name</b>	<b>ISO Code</b>	<b>English</b>	<b>Français</b>	<b>Deutsch</b>
Belgique/België	BE	Belgium	Belgique	Belgien
Bългария	BG	Bulgaria	Bulgarie	Bulgarien
Česká Republika	CZ	Czech Republic	République tchèque	Tschechische Republik
Danmark	DK	Denmark	Danemark	Dänemark
Deutschland	DE	Germany	Allemagne	Deutschland
Eesti	EE	Estonia	Estonie	Estland
Ellas	EL	Greece	Grèce	Griechenland
España	ES	Spain	Espagne	Spanien
France	FR	France	France	Frankreich
Ireland	IE	Ireland	Irlande	Irland
Italia	IT	Italy	Italie	Italien
Kypros	CY	Cyprus	Chypre	Zypern
Latvija	LV	Latvia	Lettonie	Lettland
Lietuva	LT	Lithuania	Lituanie	Litauen
Luxembourg	LU	Luxembourg	Luxembourg	Luxemburg
Magyarország	HU	Hungary	Hongrie	Ungarn
Malta	MT	Malta	Malte	Malta
Nederland	NL	Netherlands	Pays-Bas	Niederlande
Österreich	AT	Austria	Autriche	Österreich
Polska	PL	Poland	Pologne	Polen
Portugal	PT	Portugal	Portugal	Portugal
România	RO	Romania	Roumanie	Rumänien
Slovenija	SI	Slovenia	Slovénie	Slowenien
Slovensko	SK	Slovakia	Slovaquie	Slovakei
Suomi/Finland	FI	Finland	Finlande	Finnland
Sverige	SE	Sweden	Suède	Schweden
United Kingdom	UK	United Kingdom	Royaume-Uni	Vereinigtes Königreich

In addition, results of the monthly reports of Norway (NO) are included.

## 4. SUMMARY OF THE BSE TESTING IN BOVINE ANIMALS DURING 2010

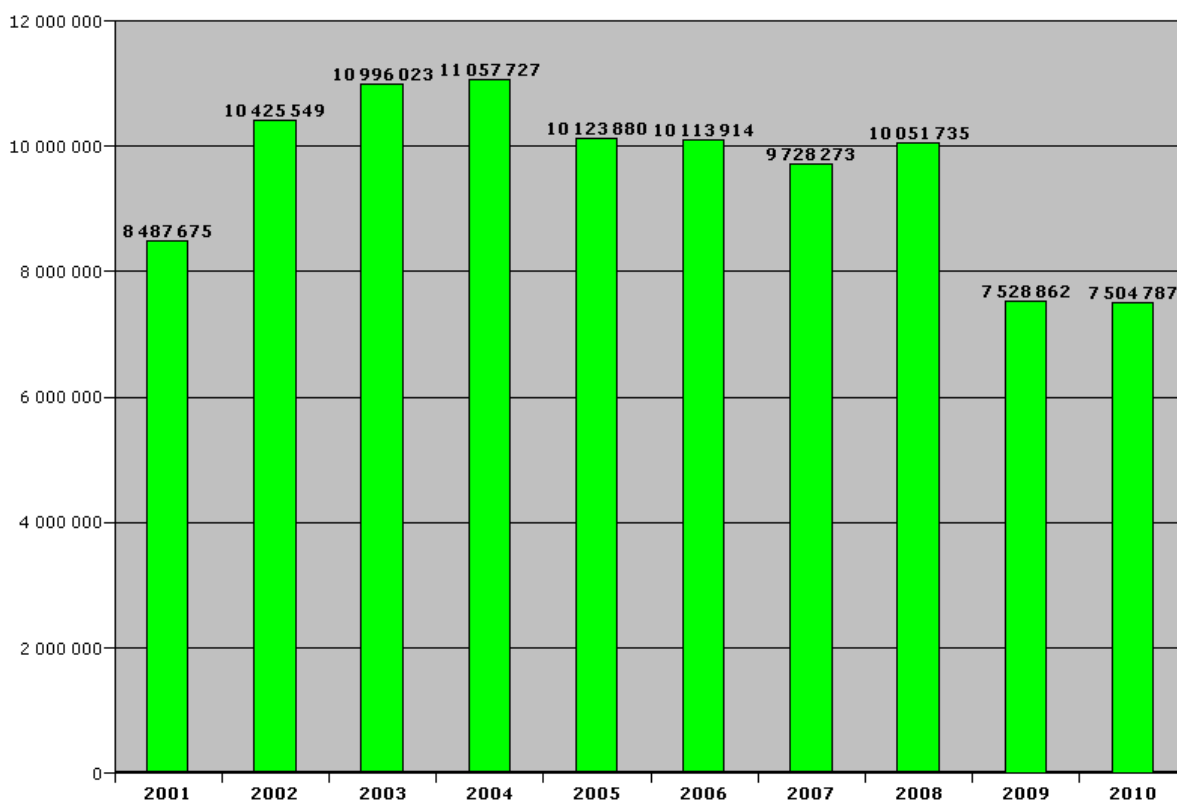
The information was extracted directly from the electronic submission of monthly and case reports by Member States. The monthly information is often updated and/or corrected by the Member States in following reports. The information shown in the following summaries is updated according to the information received electronically until 21 November 2011. Information on adult cattle population in 2010 was obtained from Eurostat.

### 4.1. Sampling

#### Comments on the sampling

In the absence of any decision to raise the age limit for BSE testing, apart from Cyprus, the monitoring programme carried out in 2010 remained at a similar level as in 2009. Over 96 million cattle have been tested in the EU since 2001.

**Chart B1: Total tests performed in the period 2001–2010 in the EU27**



**Table B1: BSE tests performed and positive cases detected per Member State and target group in 2010**

	Clinical signs at AM		Emergency slaughter		Eradication Measures		Fallen stock		Healthy slaughtered animals		Suspects subject to laboratory examination		Total tests 2010	Total positive cases 2010	Ratio*
	N° Tests	N° Positive cases	N° Tests	N° Positive cases	N° Tests	N° Positive cases	N° Tests	N° Positive cases	N° Tests	N° Positive cases	N° Tests	N° Positive cases			
Belgique/België	150	0	298	0	0	0	26 115	0	229 496	0	44	0	256 103	0	0.00
Bulgaria	40	0	2 669	0	0	0	1 062	0	9 782	0	1	0	13 554	0	0.00
Ceská Republika	21	0	1 909	0	0	0	23 525	0	121 000	0	0	0	146 455	0	0.00
Danmark	1	0	608	0	0	0	24 766	0	144 417	0	2	0	169 794	0	0.00
Deutschland	3	0	6 515	0	18	0	144 087	0	1 044 772	0	496	0	1 195 891	0	0.00
Eesti	26	0	204	0	0	0	5 726	0	22 970	0	0	0	28 926	0	0.00
Ellas	0	0	22	0	0	0	3 318	0	19 920	0	0	0	23 260	0	0.00
España	631	0	219	0	30	0	91 441	6	332 619	7	3	0	424 943	13	0.31
France	0	0	19 199	0	17	0	298 469	4	1 513 308	1	10	0	1 831 003	5	0.03
Ireland	768	0	72	0	67	0	63 597	1	327 711	1	30	0	392 245	2	0.05
Italia	10 158	0	5 262	0	2	0	43 938	0	421 206	0	2	0	480 568	0	0.00
Kypros	0	0	9	0	0	0	870	0	4 923	0	0	0	5 802	0	0.00
Latvija	96	0	73	0	0	0	1 742	0	38 938	0	5	0	40 854	0	0.00
Lietuva	206	0	1 577	0	0	0	1 809	0	77 168	0	0	0	80 760	0	0.00
Luxembourg	0	0	2	0	0	0	3 476	0	5 930	0	2	0	9 410	0	0.00
Magyarország	25	0	748	0	0	0	13 122	0	72 648	0	9	0	86 552	0	0.00
Malta	0	0	65	0	0	0	294	0	2 597	0	0	0	2 956	0	0.00
Nederland	0	0	2 794	0	4	0	47 787	2	325 447	1	2	0	376 034	3	0.08
Österreich	155	0	1 331	0	1	0	19 077	1	185 764	1	4	0	206 332	2	0.10
Polska	1	0	316	0	2	0	46 665	0	590 286	2	3	0	637 273	2	0.03
Portugal	6 573	0	2 993	0	11	0	26 510	3	55 870	3	1	0	91 958	6	0.65
Romania	3	0	475	0	0	0	1 620	0	77 085	0	7	0	79 190	0	0.00
Slovenija	495	0	356	0	0	0	9 376	0	15 670	0	17	0	25 914	0	0.00
Slovensko	1	0	940	0	27	0	12 137	1	29 711	0	0	0	42 816	1	0.23
Suomi/Finland	156	0	329	0	0	0	11 846	0	61 125	0	1	0	73 457	0	0.00
Sverige	0	0	10	0	0	0	12 719	0	107 968	0	2	0	120 699	0	0.00
United Kingdom	931	0	1 890	0	199	0	166 650	11	492 349	0	19	0	662 038	11	0.17
<b>EU 27</b>	<b>20 440</b>	<b>0</b>	<b>50 885</b>	<b>0</b>	<b>378</b>	<b>0</b>	<b>1 101 744</b>	<b>29</b>	<b>6 330 680</b>	<b>16</b>	<b>660</b>	<b>0</b>	<b>7 504 787</b>	<b>45</b>	<b>0.06</b>
Norway	11	0	7 438	0	0	0	2 788	0	127	0	0	0	10 364	0	0.00
Others	11	0	7 438	0	0	0	2 788	0	127	0	0	0	10 364	0	0.00

\* Positive cases per 10 000 bovine animals tested

**Table B2: Active monitoring in relation to the adult bovine population (>2 years of age) in 2010**

	Adult cattle pop. in 2010*	Risk Animals		Healthy Slaughtered	
		N° Tests	% tests/adult cattle	N° Tests	% tests/adult cattle
Belgique/België	1 321 500	26 563	2.01 %	229 496	17.37 %
Bulgaria	339 400	3 771	1.11 %	9 782	2.88 %
Ceská Republika	628 600	25 455	4.05 %	121 000	19.25 %
Danmark	760 000	25 375	3.34 %	144 417	19.00 %
Deutschland	5 822 600	150 605	2.59 %	1 044 772	17.94 %
Eesti	125 900	5 956	4.73 %	22 970	18.24 %
Ellas	361 000	3 340	0.93 %	19 920	5.52 %
España	3 258 200	92 291	2.83 %	332 619	10.21 %
France	10 544 000	317 668	3.01 %	1 513 308	14.35 %
Ireland	2 957 400	64 437	2.18 %	327 711	11.08 %
Italia	2 704 300	59 358	2.19 %	421 206	15.58 %
Kypros	24 800	879	3.54 %	4 923	19.85 %
Latvija	206 300	1 911	0.93 %	38 938	18.87 %
Lietuva	420 000	3 592	0.86 %	77 168	18.37 %
Luxembourg	98 400	3 478	3.53 %	5 930	6.03 %
Magyarország	357 000	13 895	3.89 %	72 648	20.35 %
Malta	7 200	359	4.99 %	2 597	36.07 %
Nederland	1 766 000	50 581	2.86 %	325 447	18.43 %
Österreich	935 600	20 563	2.20 %	185 764	19.86 %
Polska	2 948 300	46 982	1.59 %	590 286	20.02 %
Portugal	810 200	36 076	4.45 %	55 870	6.90 %
Romania	1 351 300	2 098	0.16 %	77 085	5.70 %
Slovenija	201 000	10 227	5.09 %	15 670	7.80 %
Slovensko	241 000	13 078	5.43 %	29 711	12.33 %
Suomi/Finland	380 200	12 331	3.24 %	61 125	16.08 %
Sverige	650 500	12 729	1.96 %	107 968	16.60 %
United Kingdom	4 652 000	169 471	3.64 %	492 349	10.58 %
<b>Total EU 27</b>	<b>43 872 700</b>	<b>1 173 069</b>	<b>2.67 %</b>	<b>6 330 680</b>	<b>14.43 %</b>
Norway	404 000	10 237	2.53 %	127	0.03 %
<b>Total Others</b>	<b>404 000</b>	<b>10 237</b>	<b>2.53 %</b>	<b>127</b>	<b>0.03 %</b>

\*Eurostat July 2011



**Table B3: comparative active monitoring 2010 versus 2009**

	Healthy Slaughtered			Risk Animals			Total active monitoring		
	2009	2010	Diff	2009	2010	Diff	2009	2010	Diff
Belgique/België	199 299	229 496	15.15 %	26 643	26 563	-0.30 %	225 942	256 059	13.33 %
Bulgaria	9 720	9 782	0.64 %	4 130	3 771	-8.69 %	13 850	13 553	-2.14 %
Ceská Republika	126 525	121 000	-4.37 %	29 853	25 455	-14.73 %	156 472	146 455	-6.40 %
Danmark	133 375	144 417	8.28 %	25 622	25 375	-0.96 %	159 001	169 792	6.79 %
Deutschland	1 053 339	1 044 772	-0.81 %	145 480	150 605	3.52 %	1 199 388	1 195 395	-0.33 %
Eesti	25 859	22 970	-11.17 %	6 956	5 956	-14.38 %	32 815	28 926	-11.85 %
Ellas	21 872	19 920	-8.92 %	3 937	3 340	-15.16 %	25 809	23 260	-9.88 %
España	367 041	332 619	-9.38 %	101 002	92 291	-8.62 %	468 155	424 940	-9.23 %
France	1 516 941	1 513 308	-0.24 %	311 712	317 668	1.91 %	1 828 675	1 830 993	0.13 %
Ireland	313 457	327 711	4.55 %	71 965	64 437	-10.46 %	385 496	392 215	1.74 %
Italia	427 989	421 206	-1.58 %	58 656	59 358	1.20 %	486 645	480 566	-1.25 %
Kypros	6 851	4 923	-28.14 %	1 186	879	-25.89 %	8 037	5 802	-27.81 %
Latvija	42 075	38 938	-7.46 %	2 695	1 911	-29.09 %	44 770	40 849	-8.76 %
Lietuva	84 112	77 168	-8.26 %	4 345	3 592	-17.33 %	88 457	80 760	-8.70 %
Luxembourg	5 521	5 930	7.41 %	3 455	3 478	0.67 %	8 976	9 408	4.81 %
Magyarország	75 532	72 648	-3.82 %	13 091	13 895	6.14 %	88 623	86 543	-2.35 %
Malta	2 756	2 597	-5.77 %	87	359	312.64 %	2 843	2 956	3.97 %
Nederland	357 515	325 447	-8.97 %	47 797	50 581	5.82 %	405 312	376 032	-7.22 %
Österreich	170 503	185 764	8.95 %	20 990	20 563	-2.03 %	191 493	206 328	7.75 %
Polska	587 339	590 286	0.50 %	50 721	46 982	-7.37 %	638 065	637 270	-0.12 %
Portugal	57 045	55 870	-2.06 %	39 995	36 076	-9.80 %	97 123	91 957	-5.32 %
Romania	71 174	77 085	8.30 %	2 128	2 098	-1.41 %	73 302	79 183	8.02 %
Slovenija	20 128	15 670	-22.15 %	9 890	10 227	3.41 %	30 018	25 897	-13.73 %
Slovensko	36 519	29 711	-18.64 %	13 193	13 078	-0.87 %	49 712	42 816	-13.87 %
Suomi/Finland	60 705	61 125	0.69 %	11 234	12 331	9.76 %	71 939	73 456	2.11 %
Sverige	112 352	107 968	-3.90 %	12 221	12 729	4.16 %	124 573	120 697	-3.11 %
United Kingdom	449 634	492 349	9.50 %	172 927	169 471	-2.00 %	622 652	662 019	6.32 %
<b>Total EU 27</b>	<b>6 335 178</b>	<b>6 330 680</b>	<b>-0.07 %</b>	<b>1 191 911</b>	<b>1 173 069</b>	<b>-1.58 %</b>	<b>7 528 143</b>	<b>7 504 127</b>	<b>-0.32 %</b>
Norway	8 635	127	-98.53 %	9 932	10 237	3.07 %	18 567	10 364	-44.18 %
<b>Total Others</b>	<b>8 635</b>	<b>127</b>	<b>-98.53 %</b>	<b>9 932</b>	<b>10 237</b>	<b>3.07 %</b>	<b>18 567</b>	<b>10 364</b>	<b>-44.18 %</b>

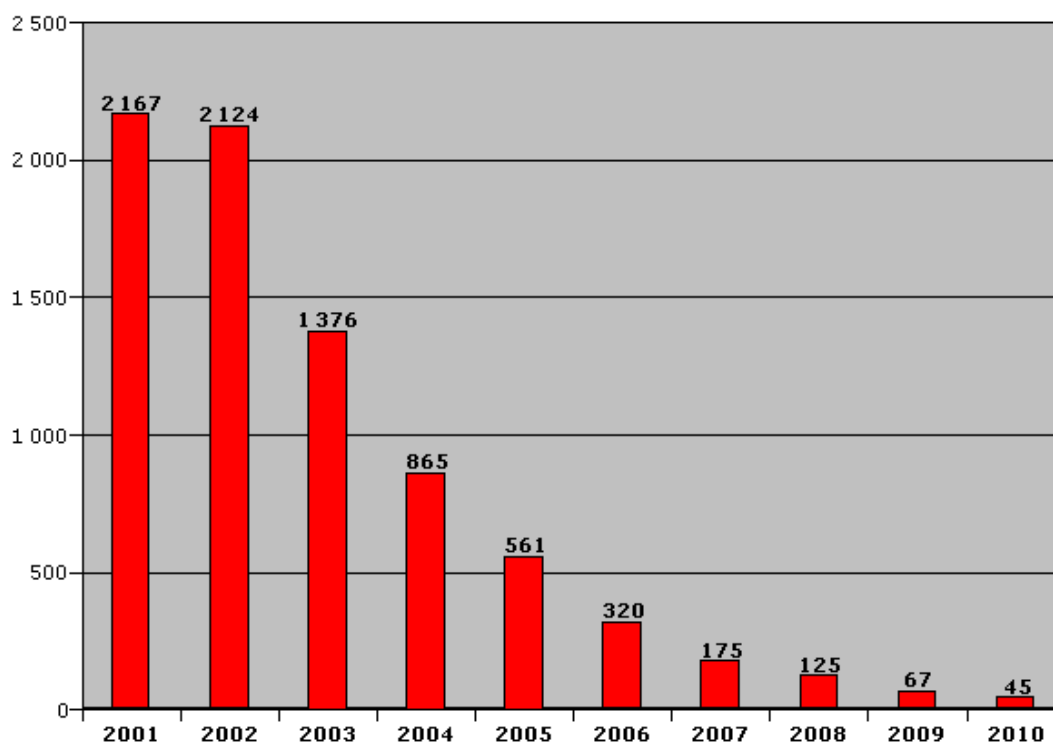
## 4.2. BSE positive cases

### Comments on BSE positive cases

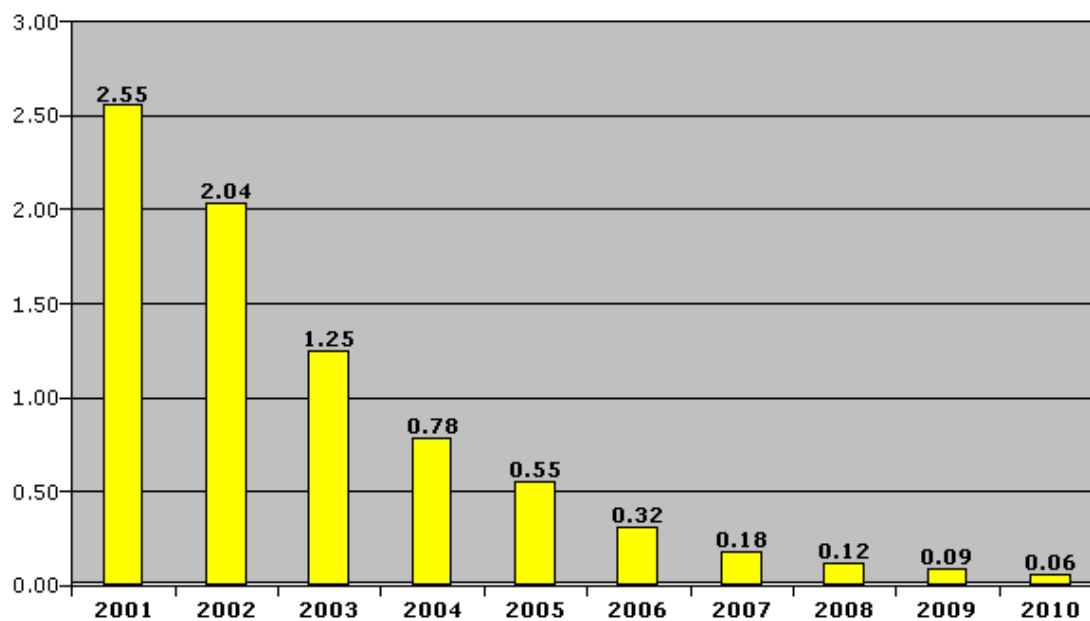
When analysing the evolution of BSE positive cases, it should be kept in mind that active monitoring was limited before 2001 and has decreased since 2009 for some Member States due to the modification of the age limit for testing. The expanded active monitoring became fully applicable in July 2001. The annual number of tests was about 25 % higher in the period 2002-2008 than in 2001 (see Chart B1). Despite the fact that the number of tests remained stable between 2002 and 2008, and decreased since 2009, the prevalence of BSE in tested animals (ratio of positives per 10 000 tests) has been steadily dropping since 2002, due to the decline in positive cases.

Overall the number of cases and the prevalence in tested animals of BSE both dropped by 33 % in the EU in 2010 compared to 2009.

**Chart B2: Evolution of the number of BSE positive cases in the EU since 2001**



**Chart B3: Evolution of the prevalence (ratio of BSE cases per 10 000 animals tested) of BSE positive cases in animals tested in the EU since 2001**



**Table B4: Evolution of positive cases world-wide since BSE was recognised**

EU	> 1988	1988	1989	1990	1991	1992	1993	1994	1995	1996	1997	1998	1999	2000	2001	2002	2003	2004	2005	2006	2007	2008	2009	2010	Total
Belgique/België	0	0	0	0	0	0	0	0	0	0	1	6	3	9	46	38	15	11	2	2	0	0	0	0	133
Ceská Republika	0	0	0	0	0	0	0	0	0	0	0	0	0	0	2	2	4	7	8	3	2	0	2	0	30
Danmark	0	0	0	0	0	1	0	0	0	0	0	0	0	1	6	3	2	1	1	0	0	0	1	0	16
Deutschland	0	0	0	0	0	1	0	3	0	0	2	0	0	7	125	106	54	65	32	16	4	2	2	0	419
Ellas	0	0	0	0	0	0	0	0	0	0	0	0	0	0	1	0	0	0	0	0	0	0	0	0	1
España	0	0	0	0	0	0	0	0	0	0	0	0	0	2	83	134	173	138	103	68	40	25	18	13	797
France	0	0	0	0	5	0	1	4	3	12	6	18	31	162	277	240	138	54	31	8	8	8	10	5	1 021
Ireland	0	0	15	14	17	18	16	19	16	74	80	83	95	149	246	331	185	121	69	38	25	22	9	2	1 644
Italia	0	0	0	0	0	0	0	2	0	0	0	0	0	0	50	36	31	8	8	7	2	1	2	0	147
Luxembourg	0	0	0	0	0	0	0	0	0	0	1	0	0	0	0	1	0	0	1	0	0	0	0	0	3
Nederland	0	0	0	0	0	0	0	0	0	0	2	2	2	2	20	24	19	6	3	2	2	1	0	3	88
Österreich	0	0	0	0	0	0	0	0	0	0	0	0	0	0	1	0	0	0	2	2	1	0	0	2	8
Polska	0	0	0	0	0	0	0	0	0	0	0	0	0	0	4	5	11	20	10	9	5	4	2	70	
Portugal	0	0	0	1	1	1	3	12	15	31	30	127	159	150	113	86	133	91	51	33	14	18	8	6	1 083
Slovenija	0	0	0	0	0	0	0	0	0	0	0	0	0	0	1	1	1	2	1	1	1	0	0	0	8
Slovensko	0	0	0	0	0	0	0	0	0	0	0	0	0	0	0	2	7	3	0	2	1	0	0	1	16
Suomi/Finland	0	0	0	0	0	0	0	0	0	0	0	0	0	0	1	0	0	0	0	0	0	0	0	0	1
Sverige	0	0	0	0	0	0	0	0	0	0	0	0	0	0	0	0	0	0	0	1	0	0	0	0	1
<b>Total EU-UK</b>	<b>0</b>	<b>0</b>	<b>15</b>	<b>15</b>	<b>23</b>	<b>21</b>	<b>20</b>	<b>40</b>	<b>34</b>	<b>117</b>	<b>122</b>	<b>236</b>	<b>290</b>	<b>482</b>	<b>972</b>	<b>1 006</b>	<b>762</b>	<b>522</b>	<b>335</b>	<b>191</b>	<b>110</b>	<b>83</b>	<b>56</b>	<b>34</b>	<b>5 486</b>
United Kingdom	442	2 514	7 228	14 407	25 359	37 301	35 090	24 436	14 562	8 149	4 393	3 235	2 301	1 441	1 198	1 125	614	343	226	129	65	42	11	11	184 622
<b>Total UK</b>	<b>442</b>	<b>2 514</b>	<b>7 228</b>	<b>14 407</b>	<b>25 359</b>	<b>37 301</b>	<b>35 090</b>	<b>24 436</b>	<b>14 562</b>	<b>8 149</b>	<b>4 393</b>	<b>3 235</b>	<b>2 301</b>	<b>1 441</b>	<b>1 198</b>	<b>1 125</b>	<b>614</b>	<b>343</b>	<b>226</b>	<b>129</b>	<b>65</b>	<b>42</b>	<b>11</b>	<b>11</b>	<b>184 622</b>

Rest of the world	> 1988	1988	1989	1990	1991	1992	1993	1994	1995	1996	1997	1998	1999	2000	2001	2002	2003	2004	2005	2006	2007	2008	2009	2010	Total
Canada	0	0	0	0	0	0	1	0	0	0	0	0	0	0	0	0	1	1	1	5	3	4	1	1	18
Israel	0	0	0	0	0	0	0	0	0	0	0	0	0	0	0	1	0	0	0	0	0	0	0	0	1
Japan	0	0	0	0	0	0	0	0	0	0	0	0	0	0	3	2	4	5	7	10	3	1	1	0	36
Liechtenstein	0	0	0	0	0	0	0	0	0	0	0	2	0	0	0	0	0	0	0	0	0	0	0	0	2
Switzerland	0	0	0	2	8	15	29	64	68	45	38	14	50	33	42	24	21	3	3	5	0	0	0	0	464
United States	0	0	0	0	0	0	0	0	0	0	0	0	0	0	0	0	1	0	1	1	0	0	0	0	3
<b>Total world</b>	<b>0</b>	<b>0</b>	<b>0</b>	<b>2</b>	<b>8</b>	<b>15</b>	<b>30</b>	<b>64</b>	<b>68</b>	<b>45</b>	<b>38</b>	<b>16</b>	<b>50</b>	<b>33</b>	<b>45</b>	<b>27</b>	<b>27</b>	<b>9</b>	<b>12</b>	<b>21</b>	<b>6</b>	<b>5</b>	<b>2</b>	<b>1</b>	<b>524</b>

Sources:

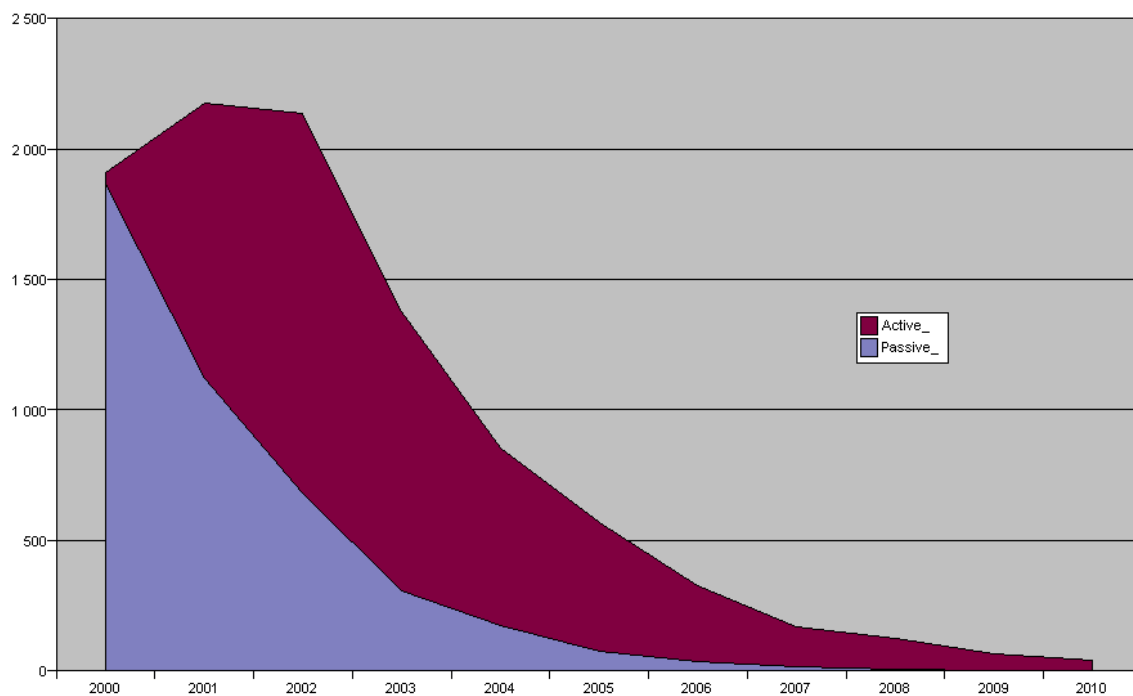
<1997: OIE.

From 1997: systematic notification of animal diseases by MS, completed by monthly reports of the UK and Portugal, and since 2001, of the other MS; websites of the competent authorities of MS and the OIE.

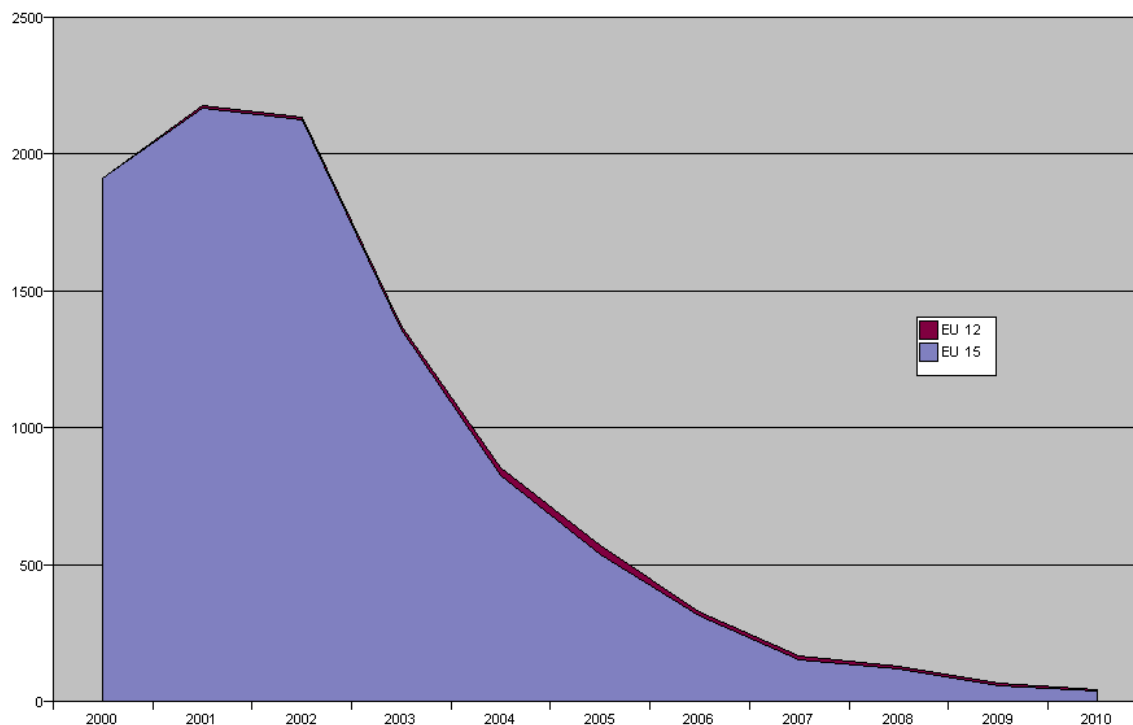
The figures displayed in the table include the following imported cases:

- Canada: 1 in 1993
- Denmark: 1 in 1992
- France: 1 in 1999
- Germany: 1 in 1992, 3 in 1994, 2 in 1997
- Ireland: 5 in 1989, 1 in 1990, 2 in 1991 and 1992, 1 in 1994 and 1 in 1995
- Italy: 2 in 1994 and 2 in 2002
- Portugal: 1 in 1990, 1 in 1991, 1 in 1992, 3 in 1993, 1 in 2000, 1 in 2004
- Slovenia: 1 in 2004
- USA: 1 in 2003

**Chart B4: Evolution of BSE cases detected by passive surveillance and active monitoring in the EU-27, from 2000 to 2010**



**Chart B5: Evolution of BSE cases detected in the EU 15 and the EU 12, from 2000 to 2010**



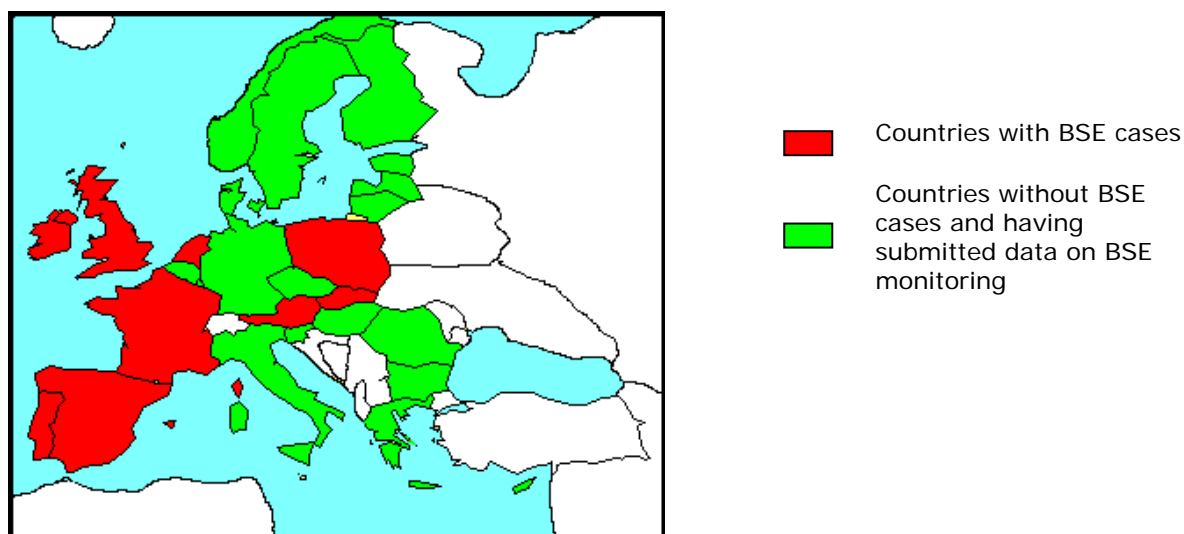
**Table B5: Total BSE positive cases per number of cattle tested or present in the adult cattle population (> 24 months of age) in 2010**

	Adult cattle population*	N° Tests	Positives	Prevalence rate pop**
Belgique/België	1 321 500	256 103	0	0.00
Bulgaria	339 400	13 554	0	0.00
Ceská Republika	628 600	146 455	0	0.00
Danmark	760 000	169 794	0	0.00
Deutschland	5 822 600	1 195 891	0	0.00
Eesti	125 900	28 926	0	0.00
Ellas	361 000	23 260	0	0.00
España	3 258 200	424 943	13	3.99
France	10 544 000	1 831 003	5	0.47
Ireland	2 957 400	392 245	2	0.68
Italia	2 704 300	480 568	0	0.00
Kypros	24 800	5 802	0	0.00
Latvija	206 300	40 854	0	0.00
Lietuva	420 000	80 760	0	0.00
Luxembourg	98 400	9 410	0	0.00
Magyarország	357 000	86 552	0	0.00
Malta	7 200	2 956	0	0.00
Nederland	1 766 000	376 034	3	1.70
Österreich	935 600	206 332	2	2.14
Polska	2 948 300	637 273	2	0.68
Portugal	810 200	91 958	6	7.41
Romania	1 351 300	79 190	0	0.00
Slovenija	201 000	25 914	0	0.00
Slovensko	241 000	42 816	1	4.15
Suomi/Finland	380 200	73 457	0	0.00
Sverige	650 500	120 699	0	0.00
United Kingdom	4 652 000	662 038	11	2.36
<b>Total EU 27</b>	<b>43 872 700</b>	<b>7 504 787</b>	<b>45</b>	<b>1.03</b>
Norway	404 000	10 364	0	0.00
<b>Total Others</b>	<b>404 000</b>	<b>10 364</b>	<b>0</b>	<b>0.00</b>

\*Eurostat July 2011

\*\*Cases over the last 12 months per 1 Million adult bovine animals

**Map 1: European countries where BSE positive cases were detected in 2010**



**Table B6: Comparison of the number of positive cases and the prevalence in animals tested in 2010 and 2009**

	Positives			Ratio*		
	2009	2010	Diff	2009	2010	Diff
Belgique/België	0	0		0,000	0,000	
Danmark	1	0	-100 %	0,063	0,000	-100 %
Deutschland	2	0	-100 %	0,017	0,000	-100 %
Ellas	0	0		0,000	0,000	
España	18	13	-28 %	0,384	0,306	-20 %
France	10	5	-50 %	0,055	0,027	-50 %
Ireland	9	2	-78 %	0,233	0,051	-78 %
Italia	2	0	-100 %	0,041	0,000	-100 %
Luxembourg	0	0		0,000	0,000	
Nederland	0	3		0,000	0,080	
Österreich	0	2		0,000	0,097	
Portugal	8	6	-25 %	0,824	0,652	-21 %
Suomi/Finland	0	0		0,000	0,000	
Sverige	0	0	100 %	0,000	0,000	
United Kingdom	11	11	0 %	0,177	0,166	-6 %
<b>Total EU 15</b>	<b>61</b>	<b>42</b>	<b>-31 %</b>	<b>0,097</b>	<b>0,067</b>	<b>-31 %</b>
Bulgaria	0	0		0,000	0,000	
Ceská Republika	2	0	-100 %	0,128	0,000	-100 %
Eesti	0	0		0,000	0,000	
Kypros	0	0		0,000	0,000	
Latvija	0	0		0,000	0,000	
Lietuva	0	0		0,000	0,000	
Magyarország	0	0		0,000	0,000	
Malta	0	0		0,000	0,000	
Polska	4	2	-50 %	0,063	0,031	-50 %
Romania	0	0		0,000	0,000	
Slovenija	0	0		0,000	0,000	
Slovensko	0	1		0,000	0,234	
<b>Total EU 12</b>	<b>6</b>	<b>3</b>	<b>-50 %</b>	<b>0,049</b>	<b>0,025</b>	<b>-48 %</b>
<b>Total EU 27</b>	<b>67</b>	<b>45</b>	<b>-33 %</b>	<b>0,089</b>	<b>0,060</b>	<b>-33 %</b>
Norway	0	0		0,000	0,000	
<b>Total Others</b>	<b>0</b>	<b>0</b>		<b>0,000</b>	<b>0,000</b>	

\* positive cases per 10 000 bovine animals tested

### 4.3. Testing by target group

**Table B7: Testing on emergency slaughtered bovine animals in 2010**

	N° tests 2010	Positives 2010	Ratio*		
			2010	2009	diff
Belgique/België	298	0	0,00	0,00	0 %
Danmark	608	0	0,00	0,00	0 %
Deutschland	6 515	0	0,00	0,00	0 %
Ellas	22	0	0,00	0,00	0 %
España	219	0	0,00	0,00	0 %
France	19 199	0	0,00	0,77	-100 %
Ireland	72	0	0,00	n/a	
Italia	5 262	0	0,00	0,00	0 %
Luxembourg	2	0	0,00	0,00	0 %
Nederland	2 794	0	0,00	0,00	0 %
Österreich	1 331	0	0,00	0,00	0 %
Portugal	2 993	0	0,00	5,26	-100 %
Suomi/Finland	329	0	0,00	0,00	0 %
Sverige	10	0	0,00	0,00	0 %
United Kingdom	1 890	0	0,00	6,10	-100 %
<b>Total EU 15</b>	<b>41 544</b>	<b>0</b>	<b>0,000</b>	<b>0,864</b>	<b>-100 %</b>
Bulgaria	2 669	0	0,00	0,00	0 %
Ceská Republika	1 909	0	0,00	0,00	0 %
Eesti	204	0	0,00	0,00	0 %
Kypros	9	0	0,00	0,00	0 %
Latvija	73	0	0,00	0,00	0 %
Lietuva	1 577	0	0,00	0,00	0 %
Magyarország	748	0	0,00	0,00	0 %
Malta	65	0	0,00	0,00	0 %
Polska	316	0	0,00	0,00	0 %
Romania	475	0	0,00	0,00	0 %
Slovenija	356	0	0,00	0,00	0 %
Slovensko	940	0	0,00	0,00	0 %
<b>Total EU 12</b>	<b>9 341</b>	<b>0</b>	<b>0,000</b>	<b>0,000</b>	<b>0 %</b>
<b>Total EU 27</b>	<b>50 885</b>	<b>0</b>	<b>0,000</b>	<b>0,574</b>	<b>-100 %</b>
Norway	7 438	0	0,00	0,00	0 %
<b>Total Others</b>	<b>7 438</b>	<b>0</b>	<b>0,000</b>	<b>0,000</b>	<b>0 %</b>

\* positive cases per 10 000 bovine animals tested

**Table B8: Testing on bovine animals with clinical signs at ante-mortem inspection in 2010**

No BSE case was detected in bovine animals with clinical signs at ante-mortem inspection tested in 2009 and 2010. The detailed number of tests performed by Member State is available in Table B1.



**Table B9: Testing on fallen stock in 2010**

	N° tests	Positives	Ratio*		
	2010	2010	2010	2009	diff
Belgique/België	26 115	0	0,000	0,000	0 %
Danmark	24 766	0	0,000	0,000	0 %
Deutschland	144 087	0	0,000	0,072	-100 %
Ellas	3 318	0	0,000	0,000	0 %
España	91 441	6	0,656	0,803	-18 %
France	298 469	4	0,134	0,234	-43 %
Ireland	63 597	1	0,157	0,705	-78 %
Italia	43 938	0	0,000	0,000	0 %
Luxembourg	3 476	0	0,000	0,000	0 %
Nederland	47 787	2	0,419	0,000	42 %
Österreich	19 077	1	0,524	0,000	52 %
Portugal	26 510	3	1,132	1,240	-9 %
Suomi/Finland	11 846	0	0,000	0,000	0 %
Sverige	12 719	0	0,000	0,000	0 %
United Kingdom	166 650	11	0,660	0,469	41 %
<b>Total EU 15</b>	<b>983 796</b>	<b>28</b>	<b>0,285</b>	<b>0,330</b>	<b>-14 %</b>
Bulgaria	1 062	0	0,000	0,000	0 %
Ceská Republika	23 525	0	0,000	0,000	0 %
Eesti	5 726	0	0,000	0,000	0 %
Kypros	870	0	0,000	0,000	0 %
Latvija	1 742	0	0,000	0,000	0 %
Lietuva	1 809	0	0,000	0,000	0 %
Magyarország	13 122	0	0,000	0,000	0 %
Malta	294	0	0,000	0,000	0 %
Polska	46 665	0	0,000	0,228	-100 %
Romania	1 620	0	0,000	0,000	0 %
Slovenija	9 376	0	0,000	0,000	0 %
Slovensko	12 137	1	0,824	0,000	82 %
<b>Total EU 12</b>	<b>117 948</b>	<b>1</b>	<b>0,085</b>	<b>0,084</b>	<b>2 %</b>
<b>Total EU 27</b>	<b>1 101 744</b>	<b>29</b>	<b>0,263</b>	<b>0,303</b>	<b>-13 %</b>
Norway	2 788	0	0,000	0,000	0 %
<b>Total Others</b>	<b>2 788</b>	<b>0</b>	<b>0,000</b>	<b>0,000</b>	<b>0 %</b>

\* positive cases per 10 000 bovine animals tested

**Table B10: Testing on all risk bovine animals (Fallen stock, bovine animals with clinical signs at ante-mortem inspection and emergency slaughter) in 2010**

Group	N° tests 2010	Positives 2010	Ratio*		
			2010	2009	diff
Belgique/België	26 563	0	0,000	0,000	0 %
Danmark	25 375	0	0,000	0,000	0 %
Deutschland	150 605	0	0,000	0,069	-100 %
Ellas	3 340	0	0,000	0,000	0 %
España	92 291	6	0,650	0,792	-18 %
France	317 668	4	0,126	0,257	-51 %
Ireland	64 437	1	0,155	0,695	-78 %
Italia	59 358	0	0,000	0,000	0 %
Luxembourg	3 478	0	0,000	0,000	0 %
Nederland	50 581	2	0,395	0,000	40 %
Österreich	20 563	1	0,486	0,000	49 %
Portugal	36 076	3	0,832	1,250	-33 %
Suomi/Finland	12 331	0	0,000	0,000	0 %
Sverige	12 729	0	0,000	0,000	0 %
United Kingdom	169 471	11	0,649	0,520	25 %
<b>Total EU 15</b>	<b>1 044 866</b>	<b>28</b>	<b>0,268</b>	<b>0,342</b>	<b>-22 %</b>
Bulgaria	3 771	0	0,000	0,000	0 %
Ceská Republika	25 455	0	0,000	0,000	0 %
Eesti	5 956	0	0,000	0,000	0 %
Kypros	879	0	0,000	0,000	0 %
Latvija	1 911	0	0,000	0,000	0 %
Lietuva	3 592	0	0,000	0,000	0 %
Magyarország	13 895	0	0,000	0,000	0 %
Malta	359	0	0,000	0,000	0 %
Polska	46 982	0	0,000	0,197	-100 %
Romania	2 098	0	0,000	0,000	0 %
Slovenija	10 227	0	0,000	0,000	0 %
Slovensko	13 078	1	0,765	0,000	76 %
<b>Total EU 12</b>	<b>128 203</b>	<b>1</b>	<b>0,078</b>	<b>0,072</b>	<b>8 %</b>
<b>Total EU 27</b>	<b>1 173 069</b>	<b>29</b>	<b>0,247</b>	<b>0,310</b>	<b>-20 %</b>
Norway	10 237	0	0,000	0,000	0 %
<b>Total Others</b>	<b>10 237</b>	<b>0</b>	<b>0,000</b>	<b>0,000</b>	<b>0 %</b>

\* positive cases per 10 000 bovine animals tested

**Table B11: Testing on healthy slaughtered bovine animals in 2010**

Group	N° tests 2010	Positives 2010	Ratio*		
			2010	2009	diff
Belgique/België	229 496	0	0,000	0,000	0,00 %
Danmark	144 417	0	0,000	0,075	-100,00 %
Deutschland	1 044 772	0	0,000	0,009	-100,00 %
Ellas	19 920	0	0,000	0,000	0,00 %
España	332 619	7	0,210	0,245	-14,17 %
France	1 513 308	1	0,007	0,013	-49,88 %
Ireland	327 711	1	0,031	0,128	-76,09 %
Italia	421 206	0	0,000	0,047	-100,00 %
Luxembourg	5 930	0	0,000	0,000	0,00 %
Nederland	325 447	1	0,031	0,000	0,00 %
Österreich	185 764	1	0,054	0,000	0,00 %
Portugal	55 870	3	0,537	0,526	2,10 %
Suomi/Finland	61 125	0	0,000	0,000	0,00 %
Sverige	107 968	0	0,000	0,000	0,00 %
United Kingdom	492 349	0	0,000	0,022	-100,00 %
<b>Total EU 15</b>	<b>5 267 902</b>	<b>14</b>	<b>0,027</b>	<b>0,044</b>	<b>-39,38 %</b>
Bulgaria	9 782	0	0,000	0,000	0,00 %
Ceská Republika	121 000	0	0,000	0,158	-100,00 %
Eesti	22 970	0	0,000	0,000	0,00 %
Kypros	4 923	0	0,000	0,000	0,00 %
Latvija	38 938	0	0,000	0,000	0,00 %
Lietuva	77 168	0	0,000	0,000	0,00 %
Magyarország	72 648	0	0,000	0,000	0,00 %
Malta	2 597	0	0,000	0,000	0,00 %
Polska	590 286	2	0,034	0,051	-33,67 %
Romania	77 085	0	0,000	0,000	0,00 %
Slovenija	15 670	0	0,000	0,000	0,00 %
Slovensko	29 711	0	0,000	0,000	0,00 %
<b>Total EU 12</b>	<b>1 062 778</b>	<b>2</b>	<b>0,019</b>	<b>0,046</b>	<b>-59,03 %</b>
<b>Total EU 27</b>	<b>6 335 178</b>	<b>16</b>	<b>0,025</b>	<b>0,044</b>	<b>-42,82 %</b>
Norway	127	0	0,000	0,000	0,00 %
<b>Total Others</b>	<b>127</b>	<b>0</b>	<b>0,000</b>	<b>0,000</b>	<b>0,00 %</b>

\* positive cases per 10 000 bovine animals tested

**Table B12: Testing on bovine animals culled in the frame of BSE eradication in 2010**

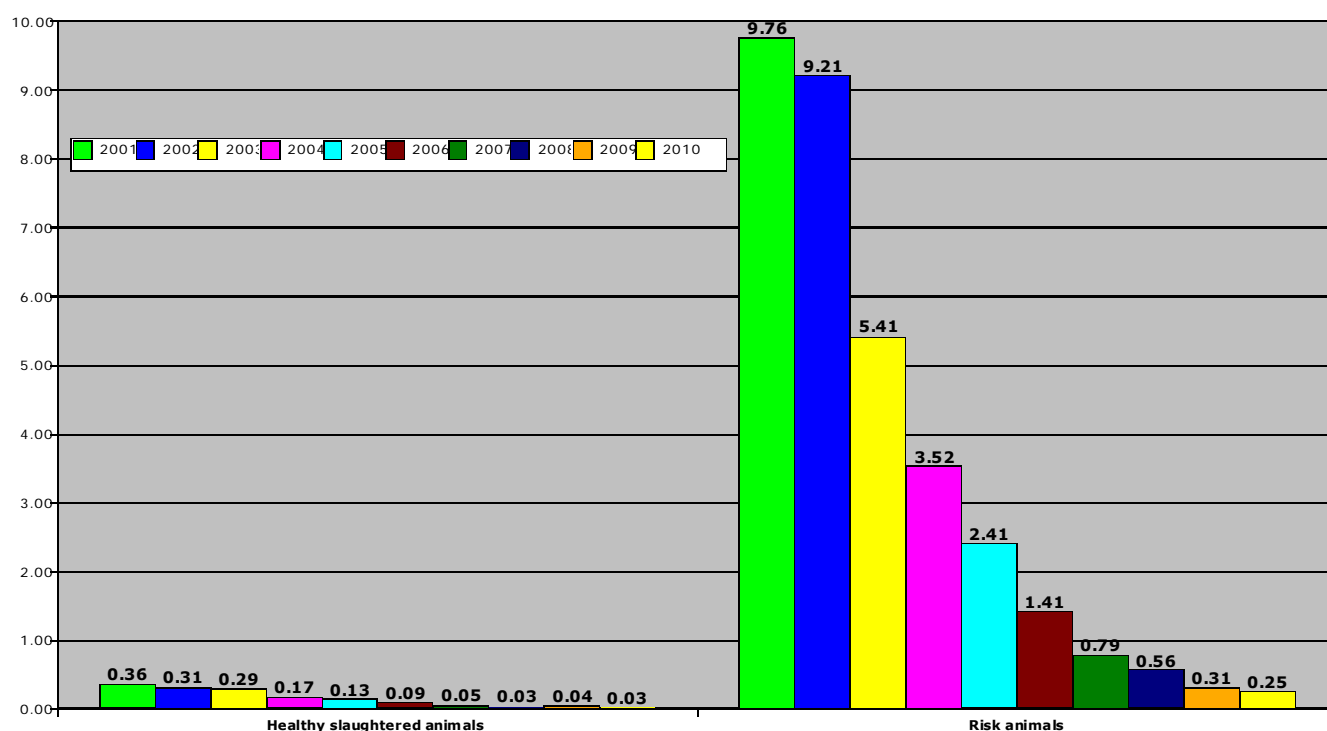
No BSE case was detected in bovine animals culled in the frame of BSE eradication in 2009 and 2010. The detailed number of tests performed by Member State is available in Table B1.

**Table B13: Testing by active monitoring in 2010 (fallen stock, emergency slaughter, animals with clinical signs at AM, healthy slaughtered animals, animals culled in connection to a BSE case)**

Group	N° tests	Positives	Ratio*		
	2010	2010	2010	2009	diff
Belgique/België	256 059	0	0,000	0,000	0 %
Danmark	169 792	0	0,000	0,063	-100 %
Deutschland	1 195 395	0	0,000	0,017	-100 %
Ellas	23 260	0	0,000	0,000	0 %
España	424 940	13	0,306	0,363	-16 %
France	1 830 993	5	0,027	0,055	-50 %
Ireland	392 215	2	0,051	0,233	-78 %
Italia	480 566	0	0,000	0,041	-100 %
Luxembourg	9 408	0	0,000	0,000	0 %
Nederland	376 032	3	0,080	0,000	8 %
Österreich	206 328	2	0,097	0,000	10 %
Portugal	91 957	6	0,652	0,824	-21 %
Suomi/Finland	73 456	0	0,000	0,000	0 %
Sverige	120 697	0	0,000	0,000	0 %
United Kingdom	662 019	11	0,166	0,161	3 %
<b>Total EU 15</b>	<b>6 313 117</b>	<b>42</b>	<b>0,067</b>	<b>0,094</b>	<b>-29 %</b>
Bulgaria	13 553	0	0,000	0,000	0 %
Ceská Republika	146 455	0	0,000	0,128	-100 %
Eesti	28 926	0	0,000	0,000	0 %
Kypros	5 802	0	0,000	0,000	0 %
Latvija	40 849	0	0,000	0,000	0 %
Lietuva	80 760	0	0,000	0,000	0 %
Magyarország	86 543	0	0,000	0,000	0 %
Malta	2 956	0	0,000	0,000	0 %
Polska	637 270	2	0,031	0,063	-50 %
Romania	79 183	0	0,000	0,000	0 %
Slovenija	25 897	0	0,000	0,000	0 %
Slovensko	42 816	1	0,234	0,000	23 %
<b>Total EU 12</b>	<b>1 191 010</b>	<b>3</b>	<b>0,025</b>	<b>0,049</b>	<b>-48 %</b>
<b>Total EU 27</b>	<b>7 504 127</b>	<b>45</b>	<b>0,060</b>	<b>0,086</b>	<b>-31 %</b>
Norway	10 364	0	0,000	0,000	0 %
<b>Total Others</b>	<b>10 364</b>	<b>0</b>	<b>0,000</b>	<b>0,000</b>	<b>0 %</b>

\* positive cases per 10 000 bovine animals tested

**Chart B6: Evolution of the BSE cases prevalence rate\* in cattle tested by active monitoring\*\*, per target group, from 2006 to 2010**



\* positive cases per 10 000 bovine animals tested

\*\* fallen stock, emergency slaughter, animals with clinical signs at AM, healthy slaughtered animals, animals culled in connection to a BSE case

### Comments on testing by target group

Figures between different Member States should be compared with caution as:

- The results of different target groups are interdependent and should not be viewed in isolation. For example, an effective passive surveillance will increase the number of cases found in suspects and may at the same time decrease the ratio of positive cases in the other target groups, in particular in fallen stock and emergency slaughtered animals. In addition the policy on emergency slaughter may vary between Member States which will have an impact on the cases detected in this surveillance stream.
- Different monitoring programmes were run in 2010. Testing older cattle decreases the denominator and results in a higher calculated prevalence. In addition, in the case of UK, the testing focussed on animals born after the date of the effective feed ban (August 1996).

The figures illustrate that the likelihood of finding BSE cases is much higher in fallen stock, emergency slaughtered cattle and cattle with general clinical signs at ante-mortem ('risk animals') than in healthy slaughtered cattle.

#### 4.4. Age distribution of BSE positive cases

**Table B14: Age distribution (age group of months) of all BSE positive cases with known age in 2010**

	Age (years old)	1	2	2	3	4	5	6	7	8	9	10	11	12	>12
	Age group (months)	<24	24-29	30-35	36-47	48-59	60-71	72-83	84-95	96-107	108-119	120-131	132-143	144-155	> 155
<b>España</b>	No of cases	0	0	0	0	0	1	0	0	0	1	3	2	2	4
<b>France</b>	No of cases	0	0	0	0	0	1	0	0	1	0	0	0	0	3
<b>Ireland</b>	No of cases	0	0	0	0	0	0	0	0	0	0	0	0	0	2
<b>Nederland</b>	No of cases	0	0	0	0	0	0	0	0	0	0	0	1	0	2
<b>Österreich</b>	No of cases	0	0	0	0	0	0	0	0	0	0	0	0	1	1
<b>Portugal</b>	No of cases	0	0	0	0	0	0	0	0	0	1	0	0	0	4
<b>United Kingdom</b>	No of cases	0	0	0	0	0	1	1	0	0	1	0	1	0	7
<b>Total EU 15</b>	No of cases	<b>0</b>	<b>0</b>	<b>0</b>	<b>0</b>	<b>0</b>	<b>3</b>	<b>1</b>	<b>0</b>	<b>1</b>	<b>3</b>	<b>3</b>	<b>4</b>	<b>3</b>	<b>23</b>
<b>Polska</b>	No of cases	0	0	0	0	0	0	0	0	0	0	1	0	0	1
<b>Slovensko</b>	No of cases	0	0	0	0	0	0	0	1	0	0	0	0	0	0
<b>Total EU 12</b>	No of cases	<b>0</b>	<b>0</b>	<b>0</b>	<b>0</b>	<b>0</b>	<b>0</b>	<b>0</b>	<b>1</b>	<b>0</b>	<b>0</b>	<b>1</b>	<b>0</b>	<b>0</b>	<b>1</b>

**Table B15: Age distribution (age group of months) of positive cases with a known age in risk animals (Fallen stock, emergency slaughter and clinical signs at Ante-Mortem inspection) in 2010**

	Age (Years old)	1	2	2	3	4	5	6	7	8	9	10	11	12	>12
	Age Group (months)	<24	24-29	30-35	36-47	48-59	60-71	72-83	84-95	96-107	108-119	120-131	132-143	144-155	> 155
<b>España</b>	No of cases	0	0	0	0	0	1	0	0	0	1	2	1	1	1
<b>France</b>	No of cases	0	0	0	0	0	1	0	0	1	0	0	0	0	2
<b>Ireland</b>	No of cases	0	0	0	0	0	0	0	0	0	0	0	0	0	1
<b>Nederland</b>	No of cases	0	0	0	0	0	0	0	0	0	0	0	0	0	2
<b>Österreich</b>	No of cases	0	0	0	0	0	0	0	0	0	0	0	0	0	1
<b>Portugal</b>	No of cases	0	0	0	0	0	0	0	0	0	0	0	0	0	2
<b>United Kingdom</b>	No of cases	0	0	0	0	0	1	1	0	0	1	0	1	0	7
<b>EU 15</b>	Total No of cases	<b>0</b>	<b>0</b>	<b>0</b>	<b>0</b>	<b>0</b>	<b>3</b>	<b>1</b>	<b>0</b>	<b>1</b>	<b>2</b>	<b>2</b>	<b>2</b>	<b>1</b>	<b>16</b>
<b>Polska</b>	No of cases	0	0	0	0	0	0	0	0	0	0	0	0	0	0
<b>Slovensko</b>	No of cases	0	0	0	0	0	0	0	1	0	0	0	0	0	0
<b>EU 12</b>	Total No of cases	<b>0</b>	<b>0</b>	<b>0</b>	<b>0</b>	<b>0</b>	<b>0</b>	<b>0</b>	<b>1</b>	<b>0</b>	<b>0</b>	<b>0</b>	<b>0</b>	<b>0</b>	<b>0</b>

**Table B16: Age distribution (age group of months) of positive cases with known age in healthy slaughtered bovine animals in 2010**

	Age (Years old)	1	2	2	3	4	5	6	7	8	9	10	11	12	>12
	Age Group (months)	<24	24-29	30-35	36-47	48-59	60-71	72-83	84-95	96-107	108-119	120-131	132-143	144-155	> 155
España	No of cases	0	0	0	0	0	0	0	0	0	0	1	1	1	3
France	No of cases	0	0	0	0	0	0	0	0	0	0	0	0	0	1
Ireland	No of cases	0	0	0	0	0	0	0	0	0	0	0	0	0	1
Nederland	No of cases	0	0	0	0	0	0	0	0	0	0	0	1	0	0
Österreich	No of cases	0	0	0	0	0	0	0	0	0	0	0	0	1	0
Portugal	No of cases	0	0	0	0	0	0	0	0	0	1	0	0	0	2
United Kingdom	No of cases	0	0	0	0	0	0	0	0	0	0	0	0	0	0
EU 15	Total No of cases	0	0	0	0	0	0	0	0	0	1	1	2	2	7
Polska	No of cases	0	0	0	0	0	0	0	0	0	0	1	0	0	1
Slovensko	No of cases	0	0	0	0	0	0	0	0	0	0	0	0	0	0
EU 12	Total No of cases	0	0	0	0	0	0	0	0	0	0	1	0	0	1

**Table B17: Age distribution (age group of months) of positive cases in BSE suspects in 2010**

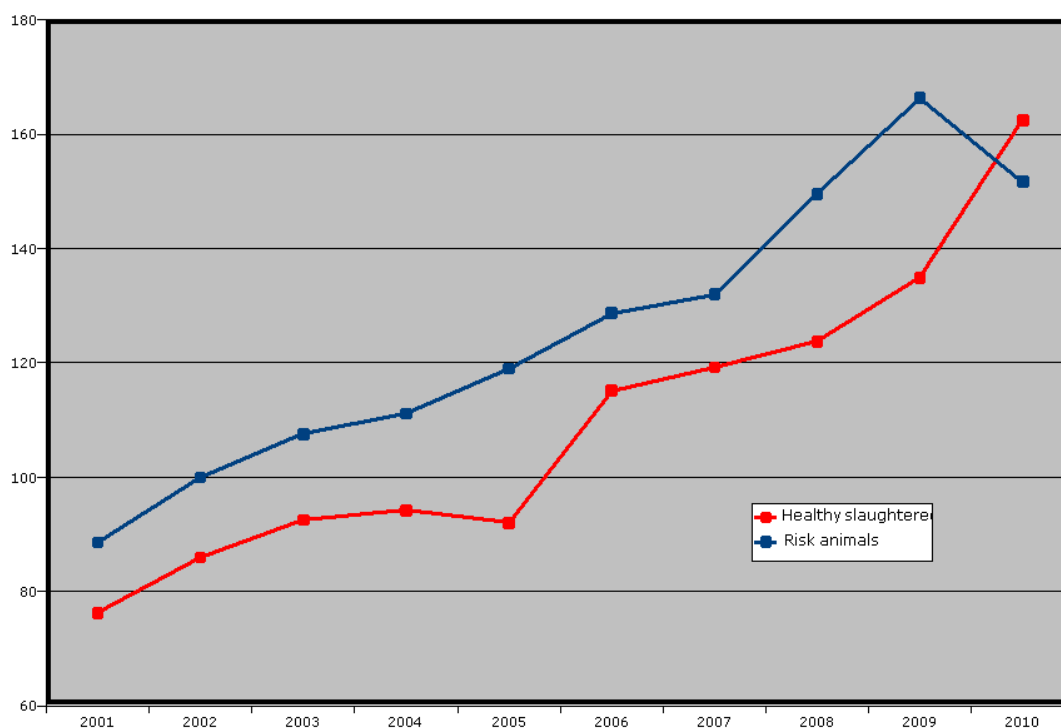
No case was detected in BSE suspects in 2010.

**Table B18: Average age (in months) per target group of BSE positive cases detected in the EU from 2001 to 2010**

	BSE eradication								Healthy slaughtered										Risk animals										BSE suspects									
	2001	2002	2003	2004	2005	2006	2007	2008	2001	2002	2003	2004	2005	2006	2007	2008	2009	2010	2001	2002	2003	2004	2005	2006	2007	2008	2009	2010	2001	2002	2003	2004	2005	2006	2007	2008	2009	
Belgique/België	74,0	0,0	0,0	0,0	0,0	0,0	0,0	0,0	72,1	74,8	88,1	91,8	96,0	144,0	0,0	0,0	0,0	0,0	73,6	84,0	81,6	83,0	0,0	178,0	0,0	0,0	0,0	0,0	73,9	81,0	0,0	82,3	95,0	0,0	0,0	0,0	0,0	
Danmark	0,0	0,0	0,0	0,0	0,0	0,0	0,0	0,0	57,7	71,0	86,0	0,0	0,0	0,0	0,0	172,0	0,0	0,0	78,0	64,0	0,0	166,0	113,0	0,0	0,0	0,0	0,0	0,0	48,0	0,0	66,0	0,0	0,0	0,0	0,0	0,0	0,0	
Deutschland	61,5	56,3	52,0	87,5	0,0	0,0	0,0	0,0	68,4	78,3	72,7	78,4	65,8	79,6	94,0	94,0	107,0	0,0	63,8	78,5	73,4	71,2	80,3	88,9	87,7	97,0	159,0	0,0	64,7	70,5	71,7	68,7	0,0	70,0	0,0	0,0	0,0	
Ellas	0,0	0,0	0,0	0,0	0,0	0,0	0,0	0,0	56,0	0,0	0,0	0,0	0,0	0,0	0,0	0,0	0,0	0,0	0,0	0,0	0,0	0,0	0,0	0,0	0,0	0,0	0,0	0,0	0,0	0,0	0,0	0,0	0,0	0,0	0,0	0,0	0,0	
España	20,0	0,0	69,0	0,0	80,4	0,0	92,0	0,0	83,0	81,3	84,2	83,2	82,3	95,0	116,8	113,1	145,0	156,2	72,5	76,4	84,2	81,5	79,1	89,7	101,5	129,7	161,4	128,6	64,3	86,6	74,0	82,7	82,1	82,3	89,0	120,7	103,0	
France	86,0	79,0	0,0	0,0	0,0	0,0	0,0	0,0	75,7	86,9	100,1	90,9	116,1	86,7	141,5	177,0	139,0	183,0	79,3	85,8	97,7	110,5	105,6	131,8	124,2	145,6	169,9	128,0	74,9	84,1	81,8	111,4	121,0	0,0	0,0	0,0	0,0	
Ireland	0,0	71,6	95,0	69,0	0,0	0,0	0,0	122,0	90,7	99,1	112,3	125,1	131,3	142,0	190,2	154,0	125,8	195,0	83,5	95,6	104,6	117,1	120,9	136,9	154,1	147,0	233,4	169,0	82,4	91,5	100,0	118,1	136,8	113,8	166,2	108,0	0,0	
Italia	0,0	0,0	0,0	0,0	0,0	0,0	0,0	0,0	66,5	80,3	91,5	67,0	96,4	109,4	114,0	153,0	147,5	0,0	71,9	75,9	97,3	93,5	115,0	72,0	171,0	0,0	0,0	0,0	0,0	0,0	96,0	0,0	0,0	0,0	0,0	0,0	0,0	0,0
Luxembourg	0,0	0,0	0,0	0,0	0,0	0,0	0,0	0,0	0,0	0,0	0,0	0,0	48,0	0,0	0,0	0,0	0,0	0,0	0,0	73,0	0,0	0,0	0,0	0,0	0,0	0,0	0,0	0,0	0,0	0,0	0,0	0,0	0,0	0,0	0,0	0,0	0,0	
Nederland	0,0	0,0	0,0	0,0	0,0	0,0	0,0	0,0	76,2	79,3	85,5	99,2	66,0	86,0	0,0	0,0	0,0	137,0	71,0	73,0	69,8	84,0	58,0	0,0	86,5	98,0	0,0	165,5	78,0	75,0	79,0	0,0	0,0	106,0	0,0	0,0	0,0	
Österreich	0,0	0,0	0,0	0,0	0,0	0,0	0,0	0,0	70,0	0,0	0,0	0,0	154,0	71,0	0,0	0,0	0,0	150,0	0,0	0,0	0,0	0,0	135,0	149,0	130,0	0,0	181,0	0,0	0,0	0,0	0,0	0,0	0,0	0,0	0,0	0,0	0,0	
Portugal	0,0	99,0	0,0	67,0	0,0	0,0	0,0	0,0	81,2	86,9	94,5	97,4	100,3	141,6	131,0	141,8	145,0	173,3	82,3	85,2	90,8	103,2	121,4	125,7	147,8	162,2	167,8	196,5	81,9	88,2	93,5	100,8	101,5	147,0	82,0	179,0	0,0	
Suomi/Finland	0,0	0,0	0,0	0,0	0,0	0,0	0,0	0,0	0,0	0,0	0,0	0,0	0,0	0,0	0,0	0,0	0,0	0,0	81,0	0,0	0,0	0,0	0,0	0,0	0,0	0,0	0,0	0,0	0,0	0,0	0,0	0,0	0,0	0,0	0,0	0,0	0,0	
Sverige	0,0	0,0	0,0	0,0	0,0	0,0	0,0	0,0	0,0	0,0	0,0	0,0	0,0	0,0	0,0	0,0	0,0	0,0	0,0	0,0	0,0	0,0	134,0	0,0	0,0	0,0	0,0	0,0	0,0	0,0	0,0	0,0	0,0	0,0	0,0	0,0	0,0	
United Kingdom	0,0	0,0	0,0	0,0	80,3	82,0	0,0	78,0	57,0	102,0	109,4	112,4	104,9	114,6	72,0	127,0	150,0	0,0	101,1	110,9	119,9	128,3	136,1	142,8	135,2	157,4	136,4	165,7	89,4	101,0	108,4	119,1	127,6	126,8	155,4	116,0	180,0	
EU 15	66,44	70,50	72,00	75,60	80,31	82,00	92,00	107,33	76,25	85,94	93,14	94,49	94,45	112,43	126,59	131,64	141,09	163,23	88,68	100,08	107,73	111,80	119,66	129,90	132,86	150,66	168,06	153,89	86,52	96,95	100,53	110,65	115,23	109,43	145,27	123,63	141,50	
Ceská Republika	0,0	0,0	0,0	0,0	58,0	0,0	0,0	0,0	77,0	77,0	65,3	88,0	59,0	81,0	0,0	0,0	63,0	0,0	75,0	0,0	84,0	60,8	60,7	72,0	126,5	0,0	0,0	0,0	0,0	0,0	0,0	0,0	0,0	0,0	0,0	0,0	0,0	
Polska	0,0	0,0	0,0	0,0	58,0	0,0	0,0	0,0	0,0	82,0	74,0	93,4	83,1	107,0	97,0	72,3	135,3	157,5	0,0	0,0	0,0	114,7	107,5	131,7	121,0	105,5	108,0	0,0	0,0	102,0	67,0	0,0	0,0	0,0	0,0	0,0	0,0	
Slovenija	0,0	0,0	0,0	0,0	0,0	0,0	0,0	0,0	0,0	0,0	0,0	0,0	62,0	81,0	0,0	0,0	0,0	0,0	62,0	75,0	44,0	61,0	0,0	0,0	75,0	0,0	0,0	0,0	0,0	0,0	0,0	0,0	0,0	0,0	0,0	0,0	0,0	
Slovensko	0,0	0,0	0,0	0,0	59,0	0,0	0,0	0,0	79,5	100,3	93,0	89,0	59,0	0,0	79,0	81,0	0,0	0,0	82,0	78,7	72,0	125,5	64,0	0,0	0,0	0,0	0,0	90,0	0,0	0,0	0,0	0,0	0,0	0,0	0,0	0,0	0,0	
EU 12					58,33				79,00	87,63	73,13	91,20	79,22	99,20	93,00	74,50	106,40	157,50	73,00	77,75	66,67	85,08	71,44	116,75	114,00	105,50	108,00	90,00	102,00	67,00								
Total EU 27	66,4	70,5	72,0	75,6	76,2	82,0	92,0	107,3	76,3	86,0	92,5	94,2	92,0	115,1	119,2	123,8	134,9	162,5	88,6	100,0	107,6	111,2	118,5	129,6	132,0	149,6	166,3	151,7	86,5	97,0	100,4	110,6	115,2	109,4	145,3	123,6	141,5	



**Chart B7: Average age (in months) of BSE positive cases detected in the EU from 2001 to 2010**



### **Comments on the age distribution of BSE positive animals**

The previous tables and charts illustrate that there are differences between Member States in the age profile of positive cases in 2010 as was already observed in the previous years.

While the average age of BSE cases detected in healthy slaughtered animals has sharply risen in 2010, it can be noted that it has dropped for the first time in 2010 in risk animals. The evolution of this indicator will have to be closely monitored in 2011.

However, the overall evolution of the average age of positive cases still appears favourable since 2001. Taking into consideration an average incubation period of 5-6 years, these figures are an indication that measures taken (mainly feed ban) have been effective.

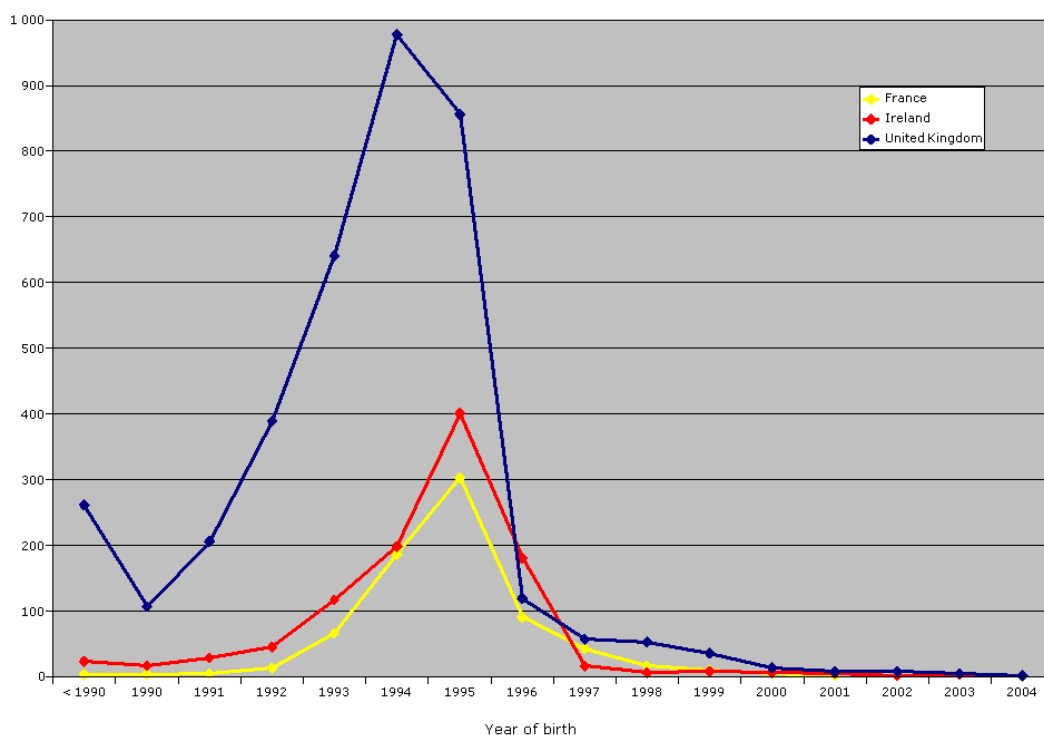
#### 4.5. Year of birth distribution of BSE positive cases detected since 2001

Table B19: Year of birth distribution of BSE cases detected from 2001 to 2010

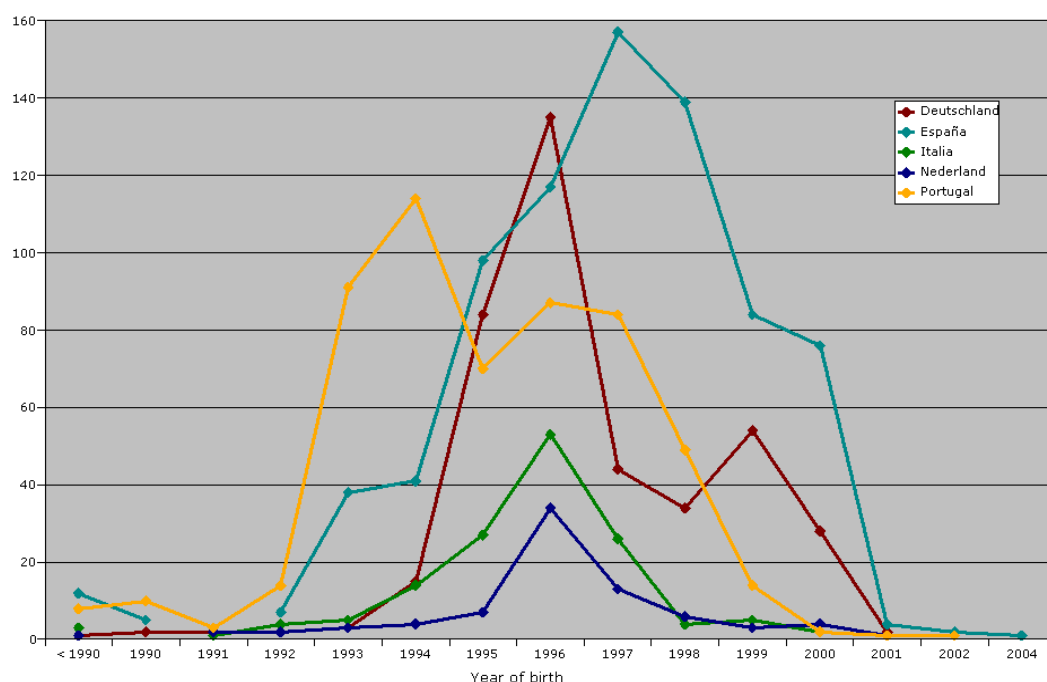
		< 1990	1990	1991	1992	1993	1994	1995	1996	1997	1998	1999	2000	2001	2002	2003	2004	2005
<b>Belgique/België</b>	<b>No of cases</b>	0	0	3	4	2	16	28	41	17	3	0	0	0	0	0	0	0
<b>Danmark</b>	<b>No of cases</b>	0	1	0	0	1	0	1	7	2	2	0	0	0	0	0	0	0
<b>Deutschland</b>	<b>No of cases</b>	1	2	2	2	3	15	84	135	44	34	54	28	2	0	0	0	0
<b>Ellas</b>	<b>No of cases</b>	0	0	0	0	0	0	0	1	0	0	0	0	0	0	0	0	0
<b>España</b>	<b>No of cases</b>	12	5	0	7	38	41	98	117	157	139	84	76	4	2	0	1	0
<b>France</b>	<b>No of cases</b>	4	4	5	13	66	186	302	91	43	17	10	5	2	0	0	1	0
<b>Ireland</b>	<b>No of cases</b>	23	17	29	45	116	198	401	181	15	6	8	6	5	2	2	1	0
<b>Italia</b>	<b>No of cases</b>	3	0	1	4	5	14	27	53	26	4	5	2	1	0	0	0	0
<b>Luxembourg</b>	<b>No of cases</b>	0	0	0	0	0	0	0	1	0	0	0	0	1	0	0	0	0
<b>Nederland</b>	<b>No of cases</b>	1	0	2	2	3	4	7	33	13	6	3	4	1	0	0	0	0
<b>Österreich</b>	<b>No of cases</b>	0	0	0	1	1	1	1	2	1	0	0	1	0	0	0	0	0
<b>Portugal</b>	<b>No of cases</b>	8	10	3	14	91	114	69	87	84	48	14	2	1	1	0	0	0
<b>Suomi/Finland</b>	<b>No of cases</b>	0	0	0	0	0	0	1	0	0	0	0	0	0	0	0	0	0
<b>Sverige</b>	<b>No of cases</b>	0	0	0	0	0	1	0	0	0	0	0	0	0	0	0	0	0
<b>United Kingdom</b>	<b>No of cases</b>	262	107	206	389	641	977	856	118	57	52	35	14	8	8	5	2	0
<b>Total EU 15</b>	<b>No of cases</b>	<b>314</b>	<b>146</b>	<b>251</b>	<b>481</b>	<b>967</b>	<b>1 567</b>	<b>1 875</b>	<b>867</b>	<b>459</b>	<b>311</b>	<b>213</b>	<b>138</b>	<b>25</b>	<b>13</b>	<b>7</b>	<b>5</b>	<b>0</b>
<b>Ceská Republika</b>	<b>No of cases</b>	0	0	0	0	0	0	4	2	4	2	3	12	1	0	1	1	0
<b>Polska</b>	<b>No of cases</b>	0	0	0	3	0	5	9	12	6	6	12	9	3	1	2	1	1
<b>Slovenija</b>	<b>No of cases</b>	0	0	0	0	0	0	1	1	0	1	1	4	0	0	0	0	0
<b>Slovensko</b>	<b>No of cases</b>	0	0	1	0	0	0	10	4	1	0	1	5	5	1	0	0	0
<b>Total EU 12</b>	<b>No of cases</b>	<b>0</b>	<b>0</b>	<b>1</b>	<b>3</b>	<b>0</b>	<b>5</b>	<b>24</b>	<b>19</b>	<b>11</b>	<b>9</b>	<b>17</b>	<b>30</b>	<b>9</b>	<b>2</b>	<b>3</b>	<b>2</b>	<b>1</b>

## Charts B8 and B9: Distribution of number of BSE cases per year of birth detected from 2001 to 2010

**Chart B8**



**Chart B9**



### Comments on the year of birth distribution of positive animals

The previous tables and charts only take account of cases detected since 2001 and does not include cases detected before 2001. However, differences between Member States with regard to the year of birth with the highest percentage of positive cases may be an indication of differences in the period of exposure to the agent and of the effectiveness of measures to prevent transmission of the agent, in particular the feed ban.

## 4.6. Prevalence of BSE in different age categories in 2010

**Table B20: Extrapolated age (months) distribution of bovine animals tested in 2010**

	BE	DK	DE	EL	ES	FR	IE	IT	LU	NL	AT	PT	FI	SE	UK	Total EU 15
< 24	78	2 764	37 706	9	8	2 876	0	43	0	0	11 451	0	11	114	4	55 064
24-29	48	36	4 498	76	3	20 523	39	84	345	765	3 559	6	11	131	43	30 167
30-35	141	13	3 845	246	45	27 255	183	942	393	290	4 652	14	23	201	147	38 390
36-47	491	83	7 761	339	12 495	52 094	573	1 316	610	3 864	8 269	5 512	187	1 048	752	95 394
48-59	75 541	56 086	297 164	3 946	56 703	331 583	50 957	105 495	1 930	91 621	31 004	12 536	23 111	35 963	90 094	1 263 734
60-71	62 375	43 313	258 782	3 572	51 959	295 863	48 069	91 485	1 386	81 376	29 219	11 873	19 134	29 423	90 648	1 118 477
72-83	43 810	28 892	199 741	3 401	45 703	249 963	47 264	72 429	1 152	65 892	26 530	10 311	13 367	20 529	90 728	919 712
84-95	28 450	16 430	141 015	2 749	41 178	205 868	44 755	57 455	926	47 969	23 363	9 120	7 904	12 687	85 250	725 119
96-107	17 384	9 118	97 266	2 216	34 322	162 646	40 271	41 404	675	30 558	19 258	7 245	4 427	7 537	73 074	547 401
108-119	10 684	4 923	65 143	1 522	27 725	127 984	36 002	29 424	509	22 826	14 786	6 829	2 362	4 688	60 117	415 524
120-131	6 540	2 911	39 822	1 146	23 937	98 783	31 104	22 014	439	12 977	10 870	4 988	1 216	2 941	54 611	314 299
132-143	3 801	1 761	24 148	963	20 168	74 619	25 654	15 732	297	7 558	7 831	4 173	703	1 923	43 314	232 645
144-155	2 356	1 119	15 051	673	17 788	54 799	20 901	11 591	274	4 443	5 690	3 452	472	1 268	33 347	173 224
> 155	3 526	2 161	24 376	2 402	88 916	112 984	46 473	31 141	475	5 450	9 847	15 898	751	2 144	36 256	382 800
Unknown	878	154	115	0	3 993	13 163	0	13	0	1 508	3	0	35	111	3 653	23 626
<b>Total</b>	<b>256 103</b>	<b>169 764</b>	<b>1 216 433</b>	<b>23 260</b>	<b>424 943</b>	<b>1 831 003</b>	<b>392 245</b>	<b>480 568</b>	<b>9 411</b>	<b>377 097</b>	<b>206 332</b>	<b>91 957</b>	<b>73 714</b>	<b>120 708</b>	<b>662 038</b>	<b>6 335 576</b>

	BG	CZ	EE	CY	LV	LT	HU	MT	PL	RO	SI	SK	Total EU 12
< 24	0	32	18	24	29	0	192	34	47	25	29	4	434
24-29	0	3 173	756	272	319	199	2 186	129	6 042	237	1 152	1 204	15 669
30-35	0	15 595	2 439	327	3 319	6 737	6 674	324	69 643	5 900	1 124	4 749	116 831
36-47	0	26 961	4 829	783	5 491	6 906	15 227	762	76 769	9 934	1 396	8 124	157 182
48-59	0	26 257	5 285	1 378	5 840	8 966	16 015	537	75 000	9 285	4 084	7 553	160 200
60-71	0	21 926	4 795	1 327	5 711	8 874	13 171	476	74 050	9 175	3 745	6 238	149 488
72-83	0	16 540	3 636	1 002	4 896	7 603	9 958	275	61 919	6 222	3 232	4 459	119 742
84-95	0	12 169	2 709	756	4 045	8 770	7 108	172	53 633	4 877	2 790	3 429	100 458
96-107	0	8 287	1 815	434	3 293	9 710	7 366	187	48 816	4 695	2 296	2 410	89 309
108-119	0	5 525	1 094	203	2 521	8 945	2 782	1	34 968	4 986	1 863	1 646	64 534
120-131	0	3 698	676	147	1 691	7 173	1 924	0	28 449	5 719	1 469	1 125	52 071
132-143	0	2 476	371	75	1 218	3 865	1 225	0	28 815	4 671	950	754	44 420
144-155	0	1 509	228	24	916	1 798	863	0	26 805	4 494	628	514	37 779
> 155	0	2 307	275	42	1 565	1 214	1 822	0	52 284	8 970	1 156	609	70 244
Unknown	0	0	0	0	0	0	0	40	0	0	0	0	40
<b>Total</b>		<b>146 455</b>	<b>28 926</b>	<b>6 794</b>	<b>40 854</b>	<b>80 760</b>	<b>86 513</b>	<b>2 937</b>	<b>637 240</b>	<b>79 190</b>	<b>25 914</b>	<b>42 818</b>	<b>1 178 401</b>

	NO	Total non EU
< 24	228	228
24-29	1 346	1 346
30-35	831	831
36-47	1 568	1 568
48-59	1 789	1 789
60-71	1 620	1 620
72-83	1 086	1 086
84-95	589	589
96-107	314	314
108-119	145	145
120-131	91	91
132-143	48	48
144-155	33	33
> 155	35	35
Unknown	641	641
<b>Total</b>	<b>10 364</b>	<b>10 364</b>

**Table B21: Extrapolated age (months) distribution of risk animals tested in 2010**

	BE	DK	DE	EL	ES	FR	IE	IT	LU	NL	AT	PT	FI	SE	UK	Total EU 15
< 24	38	18	102	5	0	2 070	0	14	0	0	0	0	6	21	1	2 275
24-29	32	3	566	70	3	19 820	37	47	344	13	1 442	6	8	74	40	22 505
30-35	37	3	503	52	4	26 688	39	56	392	35	1 525	6	7	119	87	29 553
36-47	104	53	1 468	116	12 453	50 954	186	236	609	281	2 420	5 484	74	763	597	75 798
48-59	6 872	8 239	37 648	472	11 918	41 533	7 050	13 618	507	11 277	2 392	4 782	3 597	2 710	23 201	175 816
60-71	6 047	6 717	34 852	504	11 011	36 121	7 788	11 628	421	10 787	2 515	4 367	3 400	3 060	23 411	162 629
72-83	4 485	4 495	27 070	448	9 237	30 692	7 755	9 275	362	9 107	2 419	3 742	2 379	2 379	23 355	137 200
84-95	3 151	2 354	18 401	372	8 042	25 050	7 373	7 190	280	6 900	1 982	3 291	1 260	1 409	20 796	107 851
96-107	2 025	1 322	12 029	279	6 382	19 127	6 846	5 058	186	4 500	1 556	2 534	704	778	16 839	80 165
108-119	1 370	719	7 629	207	5 078	14 834	5 904	3 446	101	2 919	1 141	2 856	355	453	13 247	60 259
120-131	798	429	4 484	156	4 631	11 507	5 016	2 472	90	1 693	829	1 747	198	288	11 780	46 118
132-143	502	256	2 756	131	4 100	8 870	4 268	1 678	47	987	624	1 383	131	194	8 964	34 891
144-155	318	178	1 854	93	3 219	6 295	3 468	1 233	49	596	528	1 104	96	136	6 955	26 122
> 155	481	435	4 086	435	15 471	17 294	8 707	3 402	89	1 053	1 188	4 772	209	256	16 590	74 468
Unknown	303	152	75	0	742	6 813	0	5	0	1 464	2	0	28	92	3 608	13 284
<b>Total</b>	<b>26 563</b>	<b>25 373</b>	<b>153 523</b>	<b>3 340</b>	<b>92 291</b>	<b>317 668</b>	<b>64 437</b>	<b>59 358</b>	<b>3 477</b>	<b>51 612</b>	<b>20 563</b>	<b>36 074</b>	<b>12 452</b>	<b>12 732</b>	<b>169 471</b>	<b>1 048 934</b>

	BG	CZ	EE	CY	LV	LT	HU	MT	PL	RO	SI	SK	Total EU 12	NO	Total non EU
< 24	0	31	17	16	15	0	9	17	42	25	21	3	196	< 24	223
24-29	0	3 173	737	160	181	199	1 546	41	5 952	237	1 151	1 198	14 575	24-29	1 331
30-35	0	2 228	534	129	180	198	1 010	40	3 381	200	958	1 187	10 045	30-35	822
36-47	0	4 269	972	195	292	213	2 474	74	6 326	336	1 370	2 422	18 943	36-47	1 553
48-59	0	4 033	1 025	217	258	327	2 424	51	6 332	301	1 333	2 274	18 575	48-59	1 771
60-71	0	3 437	968	190	263	231	2 026	46	5 823	365	1 279	1 871	16 499	60-71	1 603
72-83	0	2 439	682	136	209	220	1 467	32	4 719	196	1 144	1 298	12 542	72-83	1 069
84-95	0	1 760	464	103	155	331	970	15	3 800	136	871	958	9 563	84-95	582
96-107	0	1 249	301	65	117	287	650	20	2 934	63	690	640	7 016	96-107	311
108-119	0	875	123	27	89	382	447	1	2 008	67	505	415	4 939	108-119	145
120-131	0	688	65	22	51	377	272	0	1 505	60	334	289	3 663	120-131	90
132-143	0	459	34	6	29	301	135	0	1 324	30	202	207	2 727	132-143	48
144-155	0	265	14	1	27	395	126	0	1 047	26	130	150	2 181	144-155	33
> 155	0	549	20	7	45	131	321	0	1 870	56	239	168	3 406	> 155	35
Unknown	0	0	0	0	0	0	0	1	0	0	0	0	1	Unknown	621
<b>Total</b>		<b>25 455</b>	<b>5 956</b>	<b>1 274</b>	<b>1 911</b>	<b>3 592</b>	<b>13 877</b>	<b>338</b>	<b>47 063</b>	<b>2 098</b>	<b>10 227</b>	<b>13 080</b>	124 871	<b>Total</b>	<b>10 237</b>

**Table B22: Extrapolated age (months) distribution of healthy slaughtered animals tested in 2010**

	BE	DK	DE	EL	ES	FR	IE	IT	LU	NL	AT	PT	FI	SE	UK	Total EU 15
< 24	37	2 746	37 596	4	0	806	0	29	0	0	11 449	0	5	93	1	52 766
24-29	14	33	3 926	6	0	703	1	37	0	752	2 116	0	3	57	2	7 650
30-35	102	10	3 337	194	41	567	144	886	0	255	3 127	8	16	82	60	8 829
36-47	382	30	6 276	223	42	1 140	386	1 078	0	3 583	5 848	28	113	285	154	19 568
48-59	68 663	47 847	259 360	3 474	44 784	290 049	43 902	91 877	1 423	80 344	28 611	7 754	19 514	33 253	66 889	1 087 744
60-71	56 322	36 595	223 819	3 068	40 947	259 739	40 277	79 857	965	70 589	26 704	7 506	15 734	26 363	67 146	955 631
72-83	39 320	24 397	172 577	2 953	36 465	219 266	39 494	63 154	790	56 785	24 111	6 569	10 988	18 150	67 295	782 314
84-95	25 293	14 075	122 560	2 377	33 136	180 818	37 364	50 265	646	41 069	21 381	5 829	6 644	11 278	64 451	617 186
96-107	15 358	7 796	85 196	1 937	27 940	143 518	33 416	36 346	489	26 058	17 702	4 711	3 723	6 759	56 226	467 175
108-119	9 311	4 204	57 486	1 315	22 646	113 150	30 088	25 978	408	19 907	13 645	3 971	2 007	4 235	46 862	355 213
120-131	5 741	2 482	35 310	990	19 304	87 276	26 071	19 542	349	11 284	10 041	3 241	1 018	2 653	42 828	268 130
132-143	3 298	1 505	21 383	832	16 064	65 749	21 384	14 054	250	6 571	7 207	2 789	572	1 729	34 348	197 735
144-155	2 038	941	13 189	580	14 567	48 501	17 429	10 358	225	3 847	5 162	2 344	376	1 132	26 391	147 080
> 155	3 045	1 726	20 270	1 967	73 432	95 676	37 755	27 737	386	4 397	8 659	11 119	542	1 888	19 661	308 260
Unknown	572	2	40	0	3 251	6 350	0	8	0	44	1	0	7	19	35	10 329
<b>Total</b>	<b>229 496</b>	<b>144 389</b>	<b>1 062 325</b>	<b>19 920</b>	<b>332 619</b>	<b>1 513 308</b>	<b>327 711</b>	<b>421 206</b>	<b>5 931</b>	<b>325 485</b>	<b>185 764</b>	<b>55 869</b>	<b>61 262</b>	<b>107 976</b>	<b>492 349</b>	<b>5 285 610</b>

	BG	CZ	EE	CY	LV	LT	HU	MT	PL	RO	SI	SK	Total EU 12
< 24	0	1	1	8	11	0	179	17	1	0	0	0	218
24-29	0	0	19	110	138	0	640	88	90	0	0	6	1 091
30-35	0	13 367	1 905	198	3 139	6 539	5 663	284	66 262	5 699	166	3 562	106 784
36-47	0	22 692	3 857	588	5 198	6 693	12 751	688	70 442	9 597	24	5 702	138 232
48-59	0	22 224	4 260	1 161	5 582	8 639	13 591	486	68 668	8 983	2 749	5 279	141 622
60-71	0	18 489	3 827	1 137	5 448	8 643	11 144	430	68 226	8 808	2 464	4 367	132 983
72-83	0	14 101	2 954	866	4 687	7 383	8 491	243	57 200	6 025	2 088	3 161	107 199
84-95	0	10 409	2 245	653	3 890	8 439	6 138	157	49 833	4 741	1 918	2 451	90 874
96-107	0	7 038	1 514	369	3 175	9 423	6 716	167	45 882	4 632	1 606	1 764	82 286
108-119	0	4 650	971	176	2 432	8 563	2 335	0	32 960	4 919	1 358	1 231	59 595
120-131	0	3 010	611	125	1 640	6 796	1 651	0	26 944	5 658	1 135	836	48 406
132-143	0	2 017	337	69	1 189	3 564	1 090	0	27 491	4 641	748	547	41 693
144-155	0	1 244	214	23	889	1 403	737	0	25 758	4 468	497	364	35 597
> 155	0	1 758	255	35	1 520	1 083	1 501	0	50 414	8 914	917	441	66 838
Unknown	0	0	0	0	0	0	0	39	0	0	0	0	39
<b>Total</b>		<b>121 000</b>	<b>22 970</b>	<b>5 518</b>	<b>38 938</b>	<b>77 168</b>	<b>72 627</b>	<b>2 599</b>	<b>590 171</b>	<b>77 085</b>	<b>15 670</b>	<b>29 711</b>	<b>1 053 457</b>

	NO	Total non EU
< 24	5	5
24-29	15	15
30-35	9	9
36-47	15	15
48-59	18	18
60-71	17	17
72-83	17	17
84-95	7	7
96-107	3	3
108-119	0	0
120-131	1	1
132-143	0	0
144-155	0	0
> 155	0	0
Unknown	20	20
<b>Total</b>	<b>127</b>	<b>127</b>

**Table B23: Extrapolated age (months) distribution of BSE suspects in the EU 27 tested in 2010**

	BE	DK	DE	EL	ES	FR	IE	IT	LU	NL	AT	PT	FI	SE	UK	Total EU 15
< 24	3	0	8	0	1	0	0	0	0	0	1	0	0	0	1	14
24-29	2	0	6	0	0	0	1	0	1	0	1	0	0	0	1	12
30-35	2	0	5	0	0	0	0	0	1	0	0	0	0	0	0	8
36-47	5	0	17	0	0	0	1	2	1	0	1	0	0	0	1	28
48-59	6	0	156	0	0	1	4	0	0	0	1	0	0	0	2	170
60-71	6	1	111	0	0	3	3	0	0	0	0	0	0	0	2	126
72-83	5	0	94	0	1	5	2	0	0	0	0	0	0	0	1	108
84-95	6	1	54	0	0	0	2	0	0	0	0	0	0	0	3	66
96-107	1	0	41	0	0	1	2	0	0	0	0	0	0	0	3	48
108-119	3	0	22	0	0	0	3	0	0	0	0	1	0	0	0	29
120-131	1	0	21	0	0	0	1	0	0	0	0	0	0	0	1	24
132-143	1	0	7	0	0	0	2	0	0	0	0	0	0	0	1	11
144-155	0	0	7	0	1	0	4	0	0	0	0	0	0	0	0	12
> 155	0	0	20	0	0	0	5	0	0	0	0	0	0	0	2	27
Unknown	3	0	0	0	0	0	0	0	0	0	0	0	0	0	1	4
<b>Total</b>	<b>44</b>	<b>2</b>	<b>569</b>		<b>3</b>	<b>10</b>	<b>30</b>	<b>2</b>	<b>3</b>		<b>4</b>	<b>1</b>			<b>19</b>	<b>687</b>

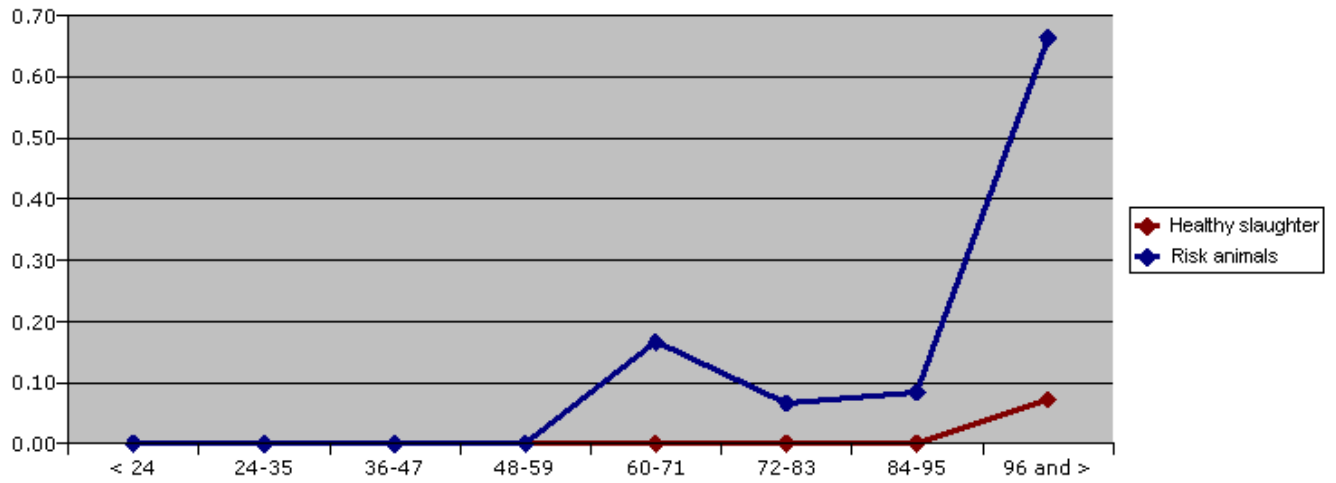
	BG	CZ	EE	CY	LV	LT	HU	MT	PL	RO	SI	SK	Total EU 12
< 24	0	0	0	0	3	0	4	0	0	0	8	0	15
24-29	0	0	0	0	0	0	0	0	0	0	1	0	1
30-35	0	0	0	0	0	0	1	0	0	1	0	0	2
36-47	0	0	0	0	1	0	2	0	1	1	2	0	7
48-59	0	0	0	0	0	0	0	0	0	1	2	0	3
60-71	0	0	0	0	0	0	1	0	1	2	2	0	6
72-83	0	0	0	0	0	0	0	0	0	1	0	0	1
84-95	0	0	0	0	0	0	0	0	0	0	1	0	1
96-107	0	0	0	0	1	0	0	0	0	0	0	0	1
108-119	0	0	0	0	0	0	0	0	0	0	0	0	0
120-131	0	0	0	0	0	0	1	0	0	1	0	0	2
132-143	0	0	0	0	0	0	0	0	0	0	0	0	0
144-155	0	0	0	0	0	0	0	0	0	0	1	0	1
> 155	0	0	0	0	0	0	0	0	0	0	0	0	0
Unknown	0	0	0	0	0	0	0	0	0	0	0	0	0
<b>Total</b>					<b>5</b>		<b>9</b>		<b>2</b>	<b>7</b>	<b>17</b>		<b>40</b>

**Table B24: Extrapolated age (months) distribution of animals culled in the framework of BSE eradication in EU 27 tested in 2010**

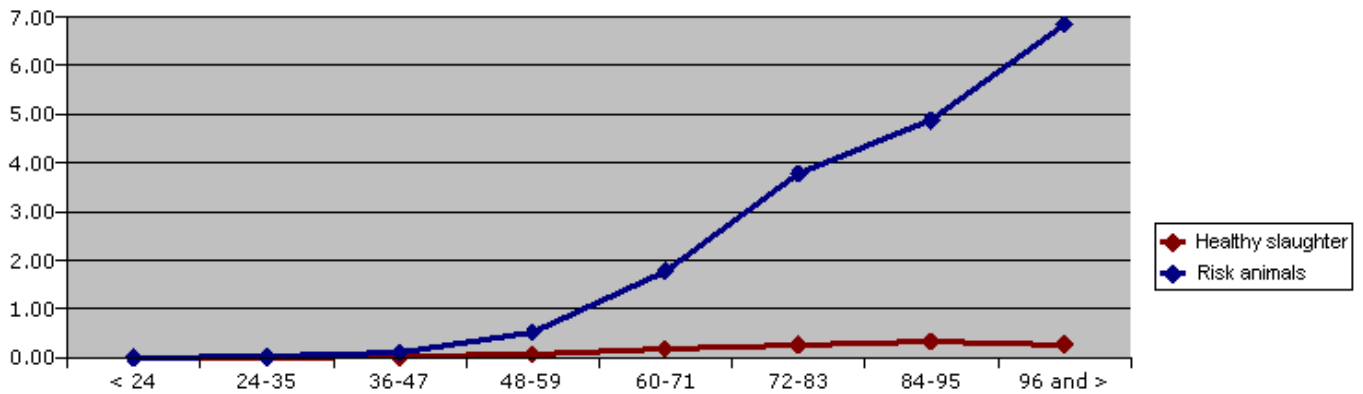
	DE	ES	FR	IE	IT	CY	LT	AT	PL	PT	SK	UK	Total EU 27
<b>&lt; 24</b>	0	7	0	0	0	0	0	1	4	0	1	1	14
<b>24-29</b>	0	0	0	0	0	2	0	0	0	0	0	0	2
<b>30-35</b>	0	0	0	0	0	0	0	0	0	0	0	0	0
<b>36-47</b>	0	0	0	0	0	0	0	0	0	0	0	0	0
<b>48-59</b>	0	1	0	1	0	0	0	0	0	0	0	2	4
<b>60-71</b>	0	1	0	1	0	0	0	0	0	0	0	89	91
<b>72-83</b>	0	0	0	13	0	0	0	0	0	0	0	77	90
<b>84-95</b>	0	0	0	16	0	0	0	0	0	0	20	0	36
<b>96-107</b>	0	0	0	7	0	0	0	0	0	0	6	6	19
<b>108-119</b>	6	1	0	7	0	0	0	0	0	1	0	8	23
<b>120-131</b>	7	2	0	16	0	0	0	0	0	0	0	2	27
<b>132-143</b>	2	4	0	0	0	0	0	0	0	1	0	1	8
<b>144-155</b>	1	1	3	0	0	0	0	0	0	4	0	1	10
<b>&gt; 155</b>	0	13	14	6	2	0	0	0	0	7	0	3	45
<b>Unknown</b>	0	0	0	0	0	0	0	0	0	0	0	9	9
<b>Total</b>	<b>16</b>	<b>30</b>	<b>17</b>	<b>67</b>	<b>2</b>	<b>2</b>		<b>1</b>	<b>4</b>	<b>13</b>	<b>27</b>	<b>199</b>	<b>378</b>



**Chart B10: Prevalence rate of BSE, per target group, in cattle of different age (months) in the EU in 2010 (positive per 10.000 tests)**



**Chart B11: Prevalence rate of BSE, per target group, in cattle of different age (months) in the EU from 2002 to 2010 (positive per 10.000 tests)**



**Table B25: Prevalence rate of BSE (positive cases per 10 000 tests) in animals of different age groups (months) tested in 2010 in EU 27 and Norway: all categories of animals**

	ES	FR	IE	NL	AT	PL	PT	UK	Global prevalence rate in EU 27 and NO
< 24	0,00	0,00	0,00	0,00	0,00	0,00	0,00	0,00	<b>0,00</b>
24-35	0,00	0,00	0,00	0,00	0,00	0,00	0,00	0,00	<b>0,00</b>
36-47	0,00	0,00	0,00	0,00	0,00	0,00	0,00	0,00	<b>0,00</b>
48-59	0,00	0,00	0,00	0,00	0,00	0,00	0,00	0,00	<b>0,00</b>
60-71	0,19	0,03	0,00	0,00	0,00	0,00	0,00	0,11	<b>0,02</b>
72-83	0,00	0,00	0,00	0,00	0,00	0,00	0,00	0,11	<b>0,01</b>
84-95	0,00	0,00	0,00	0,00	0,00	0,00	0,00	0,00	<b>0,01</b>
96-107	0,00	0,06	0,00	0,00	0,00	0,00	0,00	0,00	<b>0,02</b>
108-119	0,36	0,00	0,00	0,00	0,00	0,00	1,46	0,17	<b>0,06</b>
120-131	1,25	0,00	0,00	0,00	0,00	0,35	0,00	0,00	<b>0,11</b>
132-143	0,99	0,00	0,00	1,32	0,00	0,00	0,00	0,23	<b>0,14</b>
144-155	1,12	0,00	0,00	0,00	1,76	0,00	0,00	0,00	<b>0,14</b>
> 155	0,45	0,27	0,43	1,83	1,02	0,19	2,52	1,93	<b>0,51</b>

**Table B26: Prevalence rate of BSE in tested animals (positive cases per 10 000 tests) of different age groups (months) in 2010: risk animals**

	ES	FR	IE	NL	AT	PT	UK	Global prevalence rate in EU 27 and NO
< 24	0,00	0,00	0,00	0,00	0,00	0,00	0,00	<b>0,00</b>
24-35	0,00	0,00	0,00	0,00	0,00	0,00	0,00	<b>0,00</b>
36-47	0,00	0,00	0,00	0,00	0,00	0,00	0,00	<b>0,00</b>
48-59	0,00	0,00	0,00	0,00	0,00	0,00	0,00	<b>0,00</b>
60-71	0,91	0,28	0,00	0,00	0,00	0,00	0,43	<b>0,17</b>
72-83	0,00	0,00	0,00	0,00	0,00	0,00	0,43	<b>0,07</b>
84-95	0,00	0,00	0,00	0,00	0,00	0,00	0,00	<b>0,08</b>
96-107	0,00	0,52	0,00	0,00	0,00	0,00	0,00	<b>0,11</b>
108-119	1,97	0,00	0,00	0,00	0,00	0,00	0,75	<b>0,31</b>
120-131	4,32	0,00	0,00	0,00	0,00	0,00	0,00	<b>0,40</b>
132-143	2,44	0,00	0,00	0,00	0,00	0,00	1,12	<b>0,53</b>
144-155	3,11	0,00	0,00	0,00	0,00	0,00	0,00	<b>0,35</b>
> 155	0,65	1,16	1,15	9,50	8,42	4,19	4,22	<b>1,93</b>

**Table B27: Prevalence rate of BSE in tested animals (positive cases per 10 000 tests) of different age groups (months) in 2010: healthy slaughtered animals**

	ES	FR	IE	PL	PT	Global prevalence rate in EU 27 and NO
<b>&lt; 24</b>	0,00	0,00	0,00	0,00	0,00	<b>0,00</b>
<b>24-35</b>	0,00	0,00	0,00	0,00	0,00	<b>0,00</b>
<b>36-47</b>	0,00	0,00	0,00	0,00	0,00	<b>0,00</b>
<b>48-59</b>	0,00	0,00	0,00	0,00	0,00	<b>0,00</b>
<b>60-71</b>	0,00	0,00	0,00	0,00	0,00	<b>0,00</b>
<b>72-83</b>	0,00	0,00	0,00	0,00	0,00	<b>0,00</b>
<b>84-95</b>	0,00	0,00	0,00	0,00	0,00	<b>0,00</b>
<b>96-107</b>	0,00	0,00	0,00	0,00	0,00	<b>0,00</b>
<b>108-119</b>	0,00	0,00	0,00	0,00	2,52	<b>0,02</b>
<b>120-131</b>	0,52	0,00	0,00	0,37	0,00	<b>0,06</b>
<b>132-143</b>	0,62	0,00	0,00	0,00	0,00	<b>0,08</b>
<b>144-155</b>	0,69	0,00	0,00	0,00	0,00	<b>0,11</b>
<b>&gt; 155</b>	0,41	0,10	0,26	0,20	1,80	<b>0,21</b>

**Table B28: Prevalence rate of BSE in tested animals (positive cases per 10 000 tests) of different age groups (months) in 2010: BSE suspects**

No case was detected in BSE suspects in 2010.

## 4.7. BSE in young animals

**Table B29: Number of positive BSE cases below 60 months of age in the EU from 2001 to 2010**

	Age of BSE cases in months																								
	59	58	57	56	55	54	53	52	51	50	49	48	47	46	45	44	43	42	41	39	36	34	32	29	28
<b>2001</b>	15	14	10	12	11	9	8	6	4	3	6	5	1	1	1	1	3	1						1	1
<b>2002</b>	4	6	11	6	2	6	7	8	1	3	2	3	1	1	1				1	1		1	1		
<b>2003</b>	4	4	4	7	4	3	5	5	2	2	1	1		2	2	1					1				
<b>2004</b>	7		3	3	6	4	4	3	5	5	2	2	1	2		2	1	1							
<b>2005</b>	5	9	4	5	1	1	3	1	2			2	1		2				1	1	1		2		
<b>2006</b>												1													
<b>2007</b>													1												1
<b>2008</b>				1															1						
<b>2009</b>																									
<b>2010</b>																									

**Table B30: Details on BSE positive cases < 60 months detected in 2010 in the EU**

No BSE case was detected in cattle younger than 60 months in 2010.

**Table B31: Details on BSE positive cases in animals born after 31/12/2000 detected in the EU from 2001 to 2010**

Born in 2001				
Age (months)	Target Group	Member State	Year of detection	Date of birth
39	Emergency slaughter	United Kingdom	2005	10/2001
42	Healthy slaughtered animals	Slovensko	2004	2/2001
43	Healthy slaughtered animals	Slovensko	2004	01/2001
44	Eradication Measures	United Kingdom	2005	9/2001
44	Fallen stock	Ireland	2005	9/2001
44	Healthy slaughtered animals	Slovensko	2004	1/2001
47	Fallen stock	Deutschland	2005	5/2001
48	Healthy slaughtered animals	Luxembourg	2005	11/2001
48	Healthy slaughtered animals	Polska	2005	6/2001
51	Healthy slaughtered animals	Deutschland	2005	3/2001
52	Fallen stock	Ireland	2005	3/2001
58	Clinical signs at AM	Nederland	2005	2/2001
58	Eradication Measures	Ceská Republika	2005	01/2001
58	Healthy slaughtered animals	Polska	2005	1/2001
60	Healthy slaughtered animals	France	2006	01/2001
60	Healthy slaughtered animals	Polska	2006	01/2001
61	Clinical signs at AM	Italia	2006	01/2001
61	Fallen stock	United Kingdom	2006	01/2001
62	Fallen stock	United Kingdom	2006	01/2001
62	Fallen stock	United Kingdom	2006	03/2001
64	Fallen stock	España	2006	01/2001
66	Fallen stock	United Kingdom	2006	06/2001
66	Suspects subject to laboratory examination	Ireland	2006	03/2001
71	Fallen stock	United Kingdom	2007	04/2001
78	Healthy slaughtered animals	Slovensko	2007	03/2001
79	Suspects subject to laboratory examination	Ireland	2008	11/2001
80	Healthy slaughtered animals	Slovensko	2007	03/2001
81	Healthy slaughtered animals	Slovensko	2008	10/2001
82	Suspects subject to laboratory examination	Portugal	2007	02/2001
85	Healthy slaughtered animals	España	2008	01/2001
85	Suspects subject to laboratory examination	España	2008	05/2001
86	Fallen stock	España	2008	09/2001
93	Fallen stock	United Kingdom	2008	00/2001
96	Fallen stock	Ireland	2009	02/2001
105	Fallen stock	France	2010	12/2001

Born in 2002				
Age (months)	Target Group	Member State	Year of detection	Date of birth
32	Fallen stock	Portugal	2005	10/2002
32	Healthy slaughtered animals	Polska	2005	6/2002
36	Eradication Measures	United Kingdom	2005	5/2002
41	Fallen stock	España	2005	1/2002
49	Healthy slaughtered animals	United Kingdom	2006	08/2002
63	Fallen stock	United Kingdom	2008	10/2002
65	Fallen stock	Ireland	2007	05/2002
67	Fallen stock	United Kingdom	2007	04/2002
67	Fallen stock	United Kingdom	2007	05/2002
71	Fallen stock	España	2008	07/2002
74	Suspects subject to laboratory examination	United Kingdom	2008	07/2002
78	Eradication Measures	United Kingdom	2008	05/2002
83	Healthy slaughtered animals	Ireland	2009	11/2002
87	Emergency slaughter	United Kingdom	2009	09/2002
90	Fallen stock	Slovensko	2010	11/2002

Born in 2003				
Age (months)	Target Group	Member State	Year of detection	Date of birth
48	Healthy slaughtered animals	Polska	2007	05/2003
56	Fallen stock	United Kingdom	2008	08/2003
66	Fallen stock	Ireland	2008	03/2003
66	Healthy slaughtered animals	Ceská Republika	2009	09/2003
66	Healthy slaughtered animals	Polska	2008	06/2003
66	Healthy slaughtered animals	United Kingdom	2008	01/2003
68	Eradication Measures	Ireland	2008	02/2003
68	Fallen stock	United Kingdom	2009	06/2003
71	Fallen stock	United Kingdom	2009	04/2003
74	Fallen stock	United Kingdom	2009	09/2003

Born in 2004				
Age (months)	Target Group	Member State	Year of detection	Date of birth
28	Healthy slaughtered animals	Polska	2007	12/2004
60	Healthy slaughtered animals	Ceská Republika	2009	05/2004
66	Fallen stock	United Kingdom	2010	10/2004
67	Healthy slaughtered animals	Ireland	2009	04/2004
68	Fallen stock	España	2010	10/2004
69	Fallen stock	France	2010	04/2004
73	Fallen stock	United Kingdom	2010	11/2004

Born in 2005				
Age (months)	Target Group	Member State	Year of detection	Date of birth
42	Healthy slaughtered animals	Polska	2008	03/2005

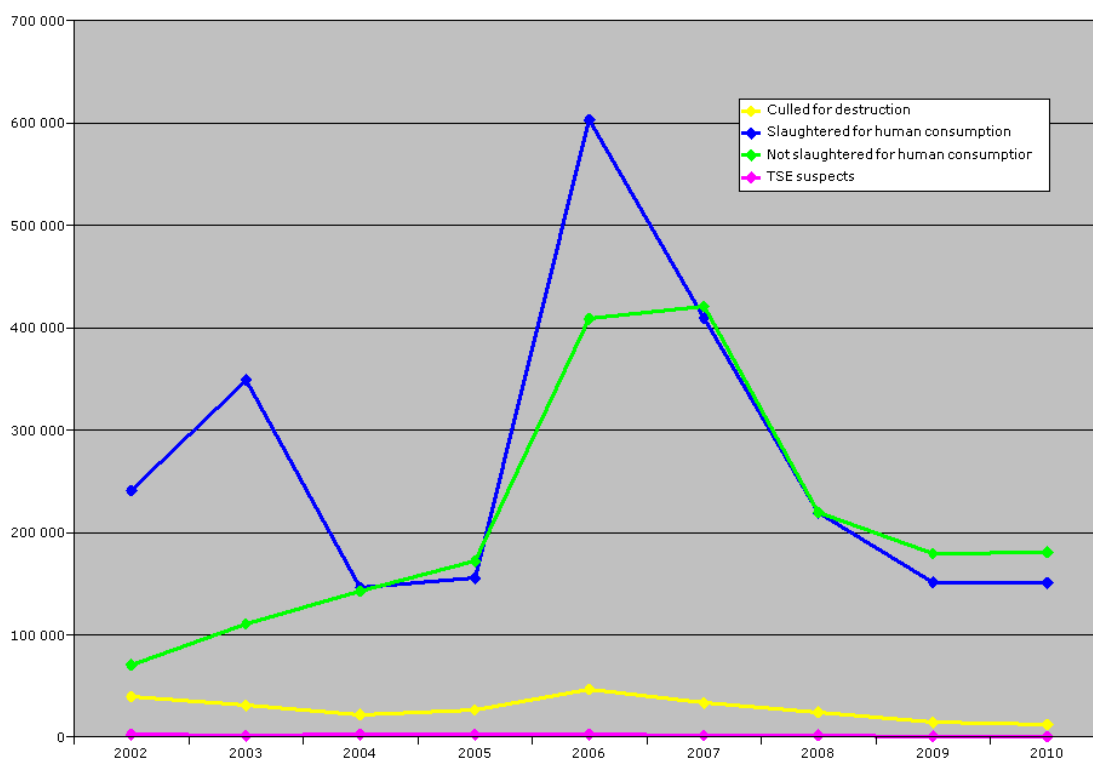
## 5. SUMMARY OF TSE TESTING IN OVINE AND CAPRINE ANIMALS DURING 2010

The information is extracted directly from the monthly and case reports electronically submitted by the Member States in 2010 and the information available since 2002. The monthly information is often updated and/or corrected by the Member States in subsequent reports. The information shown in the following summaries is updated according to the information received up to 21 November 2011. Due to technical submission issues, the TSE case reports of Greece and Cyprus remained unavailable at this date.

### 5.1. Sampling

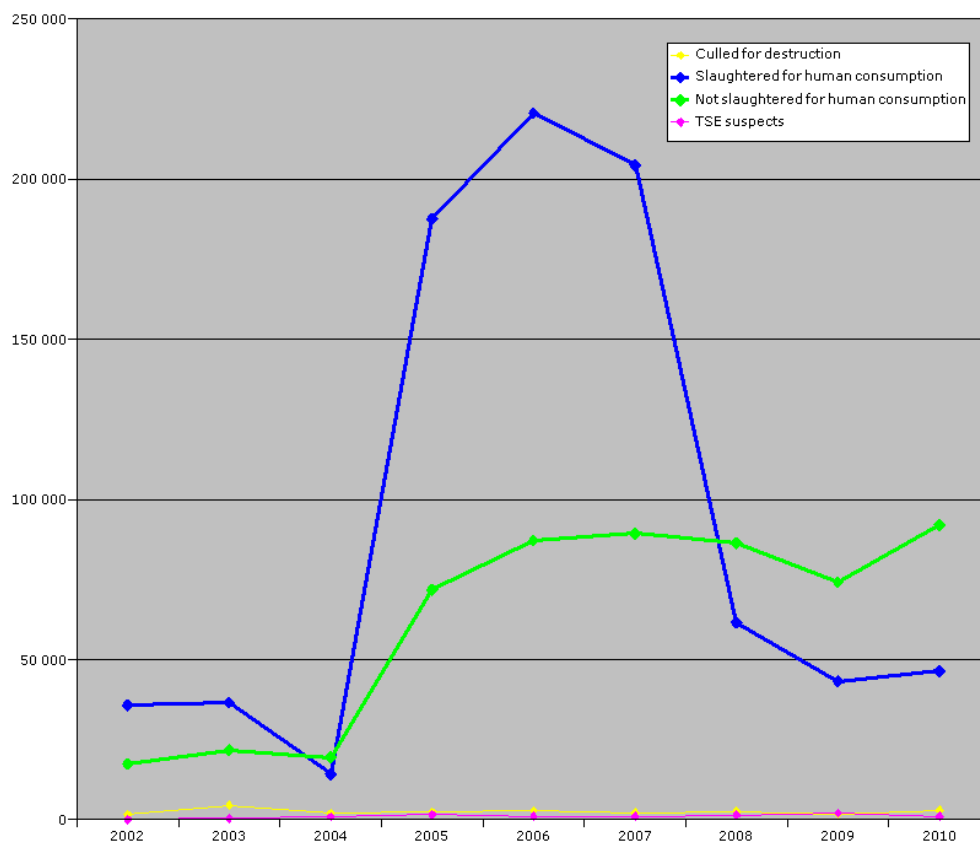
The total number of samples and the number of samples per target group and per Member State can be found in the following tables and charts

**Chart SR1: Evolution of TSE testing in sheep in the EU 27 from 2002 to 2010**



	2002	2003	2004	2005	2006	2007	2008	2009	2010
<b>Culled for destruction</b>	39 755	31 130	22 197	26 606	46 704	33 340	24 499	14 232	12 260
<b>Slaughtered for human consumption</b>	240 785	349 071	146 163	155 104	602 656	409 278	219 240	151 159	150 436
<b>Not slaughtered for human consumption</b>	70 823	110 810	142 746	171 878	408 504	420 809	219 656	179 114	180 756
<b>TSE suspects</b>	2 753	1 294	2 667	2 424	2 657	1 915	2 075	1 104	759

**Chart SR2: Evolution of TSE testing in goats in the EU 27 from 2002 to 2010**



	2002	2003	2004	2005	2006	2007	2008	2009	2010
<b>Culled for destruction</b>	1 580	4 571	2 007	2 377	2 846	2 209	2 635	1 886	3 038
<b>Slaughtered for human consumption</b>	35 732	36 598	14 301	187 541	220 640	204 382	61 589	43 270	46 414
<b>Not slaughtered for human consumption</b>	17 450	21 803	19 463	71 691	87 271	89 372	86 343	74 162	92 106
<b>TSE suspects</b>	65	429	1 033	1 560	1 129	1 156	1 471	2 149	1 110

### Comments on sampling

After declining from 2007 to 2009, the overall number of small ruminants tested for TSE in 2010 remained stable in sheep and slightly increased in goats, France alone contributing for half the tests in goats.

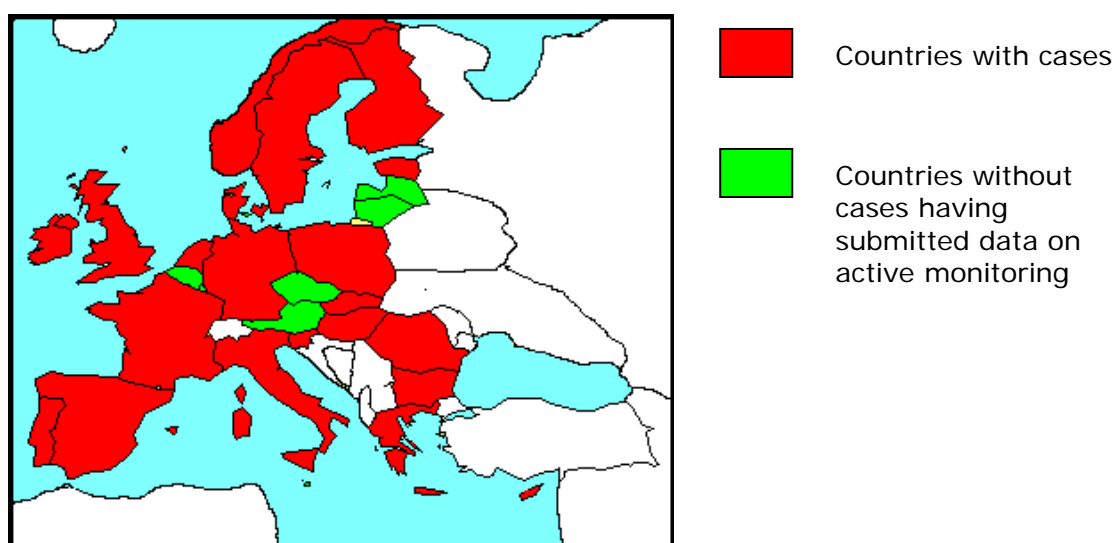
## 5.2. Positive cases

**Table SR1: Total TSE positive cases detected in ovine and caprine animals detected and prevalence rate in animals tested in 2010**

	Sheep			Goats		
	Animals tested	Positives	Ratio*	Animals tested	Positives	Ratio*
Belgique/België	1 610	0	0	216	0	0
Bulgaria	15 018	3	2	1 805	3	17
Ceská Republika	726	0	0	150	0	0
Danmark	6 069	2	3	1 820	0	0
Deutschland	22 957	13	6	3 704	0	0
Eesti	718	1	14	9	0	0
Ellas	24 760	617	249	9 537	65	68
España	27 170	147	54	24 233	12	5
France	61 023	44	7	71 193	27	4
Irland	21 942	24	11	98	0	0
Italia	24 831	104	42	12 187	4	3
Kypros	778	44	566	1 396	313	2 242
Latvija	48	0	0	5	0	0
Lietuva	2 279	0	0	77	0	0
Luxembourg	523	0	0	218	0	0
Magyarország	13 534	8	6	265	0	0
Malta	271	0	0	177	0	0
Nederland	20 274	2	1	619	0	0
Österreich	5 539	0	0	1 789	0	0
Polska	15 022	2	1	1 402	0	0
Portugal	38 131	47	12	8 491	4	5
Romania	8 150	17	21	664	0	0
Slovenija	3 721	5	13	1 041	0	0
Slovensko	2 018	5	25	24	0	0
Suomi/Finland	949	3	32	270	0	0
Sverige	6 500	4	6	28	0	0
United Kingdom	19 650	20	10	1 250	7	56
<b>EU 27</b>	<b>344 211</b>	<b>1 112</b>	<b>32</b>	<b>142 668</b>	<b>435</b>	<b>30</b>
Norway	13 326	5	4	325	0	0
<b>Others</b>	<b>13 326</b>	<b>5</b>	<b>4</b>	<b>325</b>	<b>0</b>	<b>0</b>

\*cases per 10 000 tests

**Map 2: EU Member States (+ Norway) where TSE in small ruminants was reported in 2010**

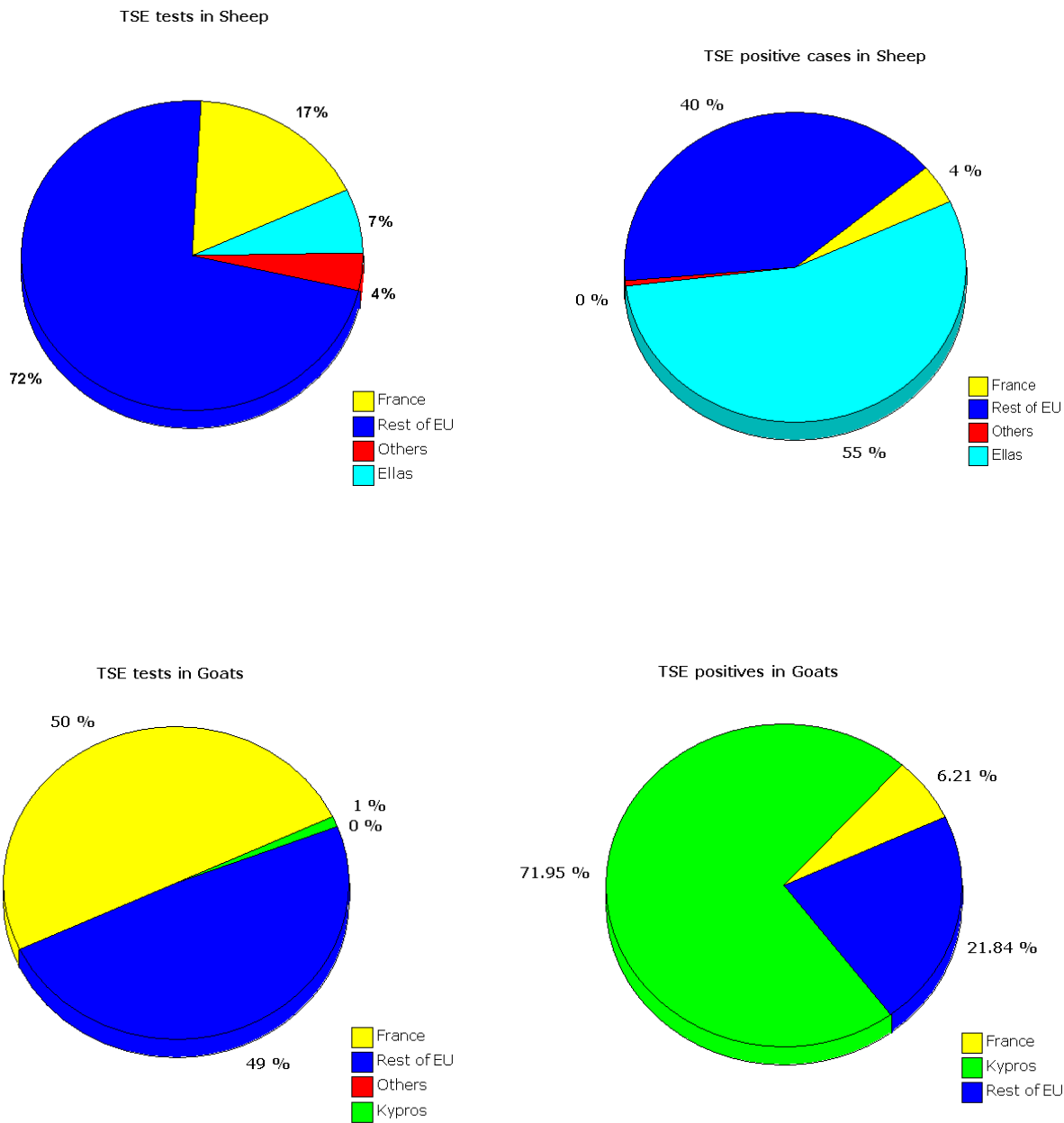




**Table SR2: Information on Index cases in 2010**

	Sheep			Goats		
	Positives			Positives		
	Reported as Index cases	Reported as not index cases	Reported as unknown	Reported as Index cases	Reported as not index cases	Reported as unknown
Belgique/België	0	0	0	0	0	0
Bulgaria	3	1	0	0	3	0
Ceská Republika	0	0	0	0	0	0
Danmark	2	0	0	0	0	0
Deutschland	0	0	13	0	0	0
Eesti	1	0	0	0	0	0
Ellas	Na			Na		
España	28	119	0	7	3	0
France	30	14	0	6	21	0
Ireland	2	18	3	0	0	0
Italia	55	49	0	3	1	0
Kypros	Na			Na		
Latvija	0	0	0	0	0	0
Lietuva	0	0	0	0	0	0
Luxembourg	0	0	0	0	0	0
Magyarország	6	0	0	0	0	0
Malta	0	0	0	0	0	0
Nederland	2	0	0	0	0	0
Österreich	0	0	0	0	0	0
Polska	2	0	0	0	0	0
Portugal	28	18	3	2	0	0
Romania	9	8	0	0	0	0
Slovenija	4	1	0	0	0	0
Slovensko	5	0	0	0	0	0
Suomi/Finland	0	0	0	0	0	0
Sverige	4	0	0	0	0	0
United Kingdom	0	0	22	0	0	7
<b>EU 27</b>	<b>181</b>	<b>228</b>	<b>41</b>	<b>18</b>	<b>28</b>	<b>7</b>
Norway	5	0	0	0	0	0
<b>Others</b>	<b>5</b>	<b>0</b>	<b>0</b>	<b>0</b>	<b>0</b>	<b>0</b>

**Chart SR3: Distribution of TSE tests carried out and TSE cases detected in 2010**



**Table SR3: TSE positive cases detected by active monitoring and passive surveillance (suspects) in ovine and caprine animals in 2010**

	Sheep				Goats			
	Population*	TSE Positives		% detected	Population*	TSE Positives		% detected
		Act. Mon.	Suspects	by active monit.		Act. Mon.	Suspects	by active monit.
Belgique/België	121 470	0	0		27 190	0	0	
Bulgaria	1 283 560	3	0	100 %	344 520	3	0	100 %
Ceská Republika	105 190	0	0		8 680	0	0	
Danmark	72 580	2	0	100 %	7 660	0	0	
Deutschland	1 468 150	13	0	100 %		0	0	
Eesti	49 960	1	0	100 %	2 570	0	0	
Ellas	8 116 400	593	24	96 %	4 109 150	65	0	100 %
España	17 072 220	139	8	95 %	2 295 760	12	0	100 %
France	6 814 190	43	1	98 %	1 159 800	26	1	96 %
Ireland	2 966 830	19	5	79 %	6 270	0	0	
Italia	5 891 940	90	14	87 %	797 480	4	0	100 %
Kypros	178 260	7	37	16 %	218 370	36	277	12 %
Latvija	40 450	0	0		12 440	0	0	
Lietuva	22 990	0	0		14 460	0	0	
Luxembourg	4 330	0	0		1 220	0	0	
Magyarország	976 710	7	1	88 %	37 230	0	0	
Malta	7 520	0	0		5 000	0	0	
Nederland	644 800	2	0	100 %	223 250	0	0	
Österreich	213 170	0	0		37 990	0	0	
Polska	208 000	2	0	100 %	93 640	0	0	
Portugal	1 953 060	47	0	100 %	323 360	4	0	100 %
Romania	7 339 120	16	1	94 %	728 480	0	0	
Slovenija	89 460	5	0	100 %	19 820	0	0	
Slovensko	281 980	5	0	100 %	12 330	0	0	
Suomi/Finland	62 170	3	0	100 %	4 620	0	0	
Sverige	230 900	4	0	100 %		0	0	
United Kingdom	15 257 700	20	0	100 %	49 160	7	0	100 %
<b>EU 27</b>	<b>71 473 110</b>	<b>1 021</b>	<b>91</b>	<b>92 %</b>	<b>10 540 450</b>	<b>157</b>	<b>278</b>	<b>36 %</b>
Norway	868 910	5	0	100 %	46 400	0	0	
<b>Others</b>	<b>868 910</b>	<b>5</b>	<b>0</b>	<b>100 %</b>	<b>46 400</b>	<b>0</b>	<b>0</b>	

\*Eurostat Dec. 2007 update, ewes and goats for reproduction

**Table SR4: TSE cases in ovine and caprine animals slaughtered for human consumption in 2010**

	Sheep					Goats				
	Total tests	Total TSE cases	2010	Ratio* 2009	2008	Total tests	Total TSE cases	2010	Ratio* 2009	2008
Belgique/België					0,0				0,0	0,0
Bulgaria	13 323	2	1,5	0,9	2,3	1 562	1	6,4	0,0	0,0
Ceská Republika	1	0	0,0	0,0	0,0				0,0	0,0
Danmark					0,0				0,0	0,0
Deutschland	9 123	3	3,3	4,0	1,8	1 530	0	0,0	0,0	0,0
Eesti	97	0	0,0	0,0	0,0	1	0	0,0	0,0	0,0
Ellas	13 448	48	35,7	31,6	28,6	5 271	4	7,6	3,4	7,2
España	10 592	12	11,3	11,1	7,4	10 532	6	5,7	1,1	1,0
France	10 160	1	1,0	4,7	7,1	12 036	1	0,8	0,0	0,4
Ireland	11 079	2	1,8	1,8	2,6	9	0	0,0	0,0	0,0
Italia	12 713	7	5,5	7,5	6,9	7 512	1	1,3	2,1	1,0
Kypros	42	0	0,0	26,9	135,6	30	1	333,3	502,5	356,3
Latvija				0,0	0,0				0,0	0,0
Lietuva	2 263	0	0,0	0,0	0,0	71	0	0,0	0,0	0,0
Luxembourg	264	0	0,0	0,0	0,0	93	0	0,0	0,0	0,0
Magyarország	5 104	3	5,9	16,0	3,4	67	0	0,0	0,0	0,0
Malta					0,0				0,0	0,0
Nederland	10 132	2	2,0	1,0	1,9	119	0	0,0	0,0	0,0
Österreich	0	0		0,0	0,0	0	0		0,0	0,0
Polska	11 631	0	0,0	2,4	0,0	135	0	0,0	0,0	0,0
Portugal	24 499	30	12,2	9,8	10,8	6 701	3	4,5	2,0	1,7
Romania	7 233	6	8,3	9,2	6,7	515	0	0,0	0,0	0,0
Slovenija	13	0	0,0	0,0	0,0				0,0	0,0
Slovensko	371	4	107,8	0,0	0,0	2	0	0,0	0,0	0,0
Suomi/Finland					0,0				0,0	0,0
Sverige				0,0	0,0	1	0	0,0	0,0	0,0
United Kingdom	8 348	14	16,8	16,8	7,2	227	0	0,0	0,0	0,0
<b>EU 27</b>	<b>150 436</b>	<b>134</b>	<b>8,9</b>	<b>9,1</b>	<b>11,6</b>	<b>46 414</b>	<b>17</b>	<b>3,7</b>	<b>3,7</b>	<b>20,6</b>
<b>EU 27-CY</b>	<b>150 394</b>	<b>134</b>	<b>8,9</b>	<b>8,9</b>	<b>7,7</b>	<b>46 384</b>	<b>16</b>	<b>3,4</b>	<b>1,4</b>	<b>1,2</b>
Norway	8 556	3	3,5	6,7	4,6	8	0	0,0	0,0	0,0
<b>Others</b>	<b>8 556</b>	<b>3</b>	<b>3,5</b>	<b>6,7</b>	<b>4,6</b>	<b>8</b>	<b>0</b>	<b>0,0</b>	<b>0,0</b>	<b>0,0</b>

\* cases per 10 000 tests

**Table SR5: TSE cases in ovine and caprine animals not slaughtered for human consumption (risk animals, mainly fallen stock) in 2010**

	Sheep					Goats				
	Total tests	Total TSE cases	2010	Ratio* 2009	2008	Total tests	Total TSE cases	2010	Ratio* 2009	2008
Belgique/België	1 544	0	0,0	0,0	0,0	212	0	0,0	0,0	0,0
Bulgaria	1 686	1	5,9	4,4	0,0	243	2	82,3	21,4	0,0
Ceská Republika	725	0	0,0	0,0	22,0	150	0	0,0	0,0	0,0
Danmark	6 067	2	3,3	0,0	2,9	1 819	0	0,0	0,0	0,0
Deutschland	13 516	10	7,4	4,6	3,2	2 153	0	0,0	0,0	0,0
Eesti	621	1	16,1	0,0	0,0	8	0	0,0	0,0	0,0
Ellas	6 906	89	128,9	113,6	105,8	3 474	10	28,8	7,5	23,7
España	14 337	69	48,1	28,7	54,3	12 412	4	3,2	2,8	4,3
France	49 409	29	5,9	6,8	7,5	58 443	5	0,9	1,5	2,0
Ireland	10 370	9	8,7	12,0	6,5	89	0	0,0	0,0	0,0
Italia	9 999	41	41,0	44,1	39,6	4 434	2	4,5	11,9	0,0
Kypros	214	7	327,1	609,6	1166,0	288	35	1215,3	1291,7	3401,1
Latvija	48	0	0,0	0,0	0,0	5	0	0,0	0,0	0,0
Lietuva	16	0	0,0	0,0	0,0	6	0	0,0	0,0	0,0
Luxembourg	259	0	0,0	0,0	0,0	125	0	0,0	0,0	0,0
Magyarország	7 291	4	5,5	8,9	8,3	196	0	0,0	0,0	0,0
Malta	271	0	0,0	0,0	0,0	177	0	0,0	0,0	0,0
Nederland	10 094	0	0,0	2,0	9,0	500	0	0,0	0,0	0,0
Österreich	5 539	0	0,0	0,0	0,0	1 789	0	0,0	0,0	0,0
Polska	3 391	2	5,9	10,1	0,0	1 267	0	0,0	0,0	0,0
Portugal	13 626	17	12,5	16,6	8,8	1 785	1	5,6	0,0	3,9
Romania	870	9	103,4	15,0	81,4	149	0	0,0	0,0	0,0
Slovenija	3 595	4	11,1	8,4	0,0	1 041	0	0,0	0,0	0,0
Slovensko	1 647	1	6,1	0,0	24,5	22	0	0,0	0,0	0,0
Suomi/Finland	949	3	31,6	0,0	0,0	270	0	0,0	28,7	0,0
Sverige	6 500	4	6,2	2,1	0,0	27	0	0,0	0,0	0,0
United Kingdom	11 266	6	5,3	11,1	12,5	1 022	7	68,5	0,0	27,3
<b>EU 27</b>	<b>180 756</b>	<b>308</b>	<b>17,0</b>	<b>16,9</b>	<b>18,7</b>	<b>92 106</b>	<b>66</b>	<b>7,2</b>	<b>14,6</b>	<b>31,8</b>
<b>EU 27-CY</b>	<b>180 542</b>	<b>301</b>	<b>16,7</b>	<b>14,6</b>	<b>14,8</b>	<b>91 818</b>	<b>31</b>	<b>3,4</b>	<b>2,6</b>	<b>2,8</b>
Norway	4 436	1	2,3	12,1	6,8	317	0	0,0	0,0	0,0
<b>Others</b>	<b>4 436</b>	<b>1</b>	<b>2,3</b>	<b>12,1</b>	<b>6,8</b>	<b>317</b>	<b>0</b>	<b>0,0</b>	<b>0,0</b>	<b>0,0</b>

\* cases per 10 000 tests

**Table SR6: TSE cases in suspect ovine and caprine animals in 2010**

	Sheep					Goats				
	Total tests	Total TSE cases	2010	Ratio* 2009	2008	Total tests	Total TSE cases	2010	Ratio* 2009	2008
Belgique/België	66	0	0,0	0,0	0,0	4	0	0,0	0,0	0,0
Bulgaria	9	0	0,0	0,0	0,0	0	0		0,0	0,0
Ceská Republika	0	0			0,0	0	0		0,0	0,0
Danmark	2	0	0,0		0,0	1	0	0,0	0,0	0,0
Deutschland	40	0	0,0	217,4	0,0	18	0	0,0	0,0	0,0
Eesti	0	0			0,0	0	0		0,0	0,0
Ellas	48	24	5000,0	2798,7	2579,2	3	0	0,0	0,0	4000,0
España	28	8	2857,1	5333,3	1666,7	0	0		0,0	0,0
France	4	1	2500,0	1666,7	2500,0	3	1	3333,3	0,0	0,0
Ireland	9	5	5555,6	8461,5	4000,0	0	0		0,0	0,0
Italia	14	14	10000,0	736,2	10000,0	0	0		0,0	0,0
Kypros	522	37	708,8	3416,3	2740,3	1 078	277	2569,6	3319,1	5201,4
Latvija	0	0			0,0	0	0		0,0	0,0
Lietuva	0	0			0,0	0	0		0,0	0,0
Luxembourg	0	0			0,0	0	0		0,0	0,0
Magyarország	3	1	3333,3	0,0	0,0	2	0	0,0	0,0	0,0
Malta	0	0			0,0	0	0		0,0	0,0
Nederland	0	0		0,0	2000,0	0	0		0,0	0,0
Österreich	0	0		0,0	0,0	0	0		0,0	0,0
Polska	0	0			0,0	0	0		0,0	0,0
Portugal	6	0	0,0		0,0	0	0		0,0	0,0
Romania	4	1	2500,0		1000,0	0	0		0,0	0,0
Slovenija	0	0			0,0	0	0		0,0	0,0
Slovensko	0	0			8125,0	0	0		0,0	0,0
Suomi/Finland	0	0			0,0	0	0		0,0	0,0
Sverige	0	0		3333,3	0,0	0	0		0,0	0,0
United Kingdom	4	0	0,0	5000,0	1000,0	1	0	0,0	10000,0	8888,9
<b>EU 27</b>	<b>759</b>	<b>91</b>	<b>1198,9</b>	<b>2518,1</b>	<b>2520,5</b>	<b>1 110</b>	<b>278</b>	<b>2504,5</b>	<b>3262,0</b>	<b>5078,2</b>
<b>EU 27-CY</b>	<b>237</b>	<b>54</b>	<b>2278,5</b>	<b>1918,4</b>	<b>2135,3</b>	<b>32</b>	<b>1</b>	<b>312,5</b>	<b>250,0</b>	<b>2963,0</b>
Norway	2	0	0,0	3333,3	0,0	0	0		0,0	0,0
<b>Others</b>	<b>2</b>	<b>0</b>	<b>0,0</b>	<b>3333,3</b>	<b>0,0</b>	<b>0</b>	<b>0</b>		<b>0,0</b>	<b>0,0</b>

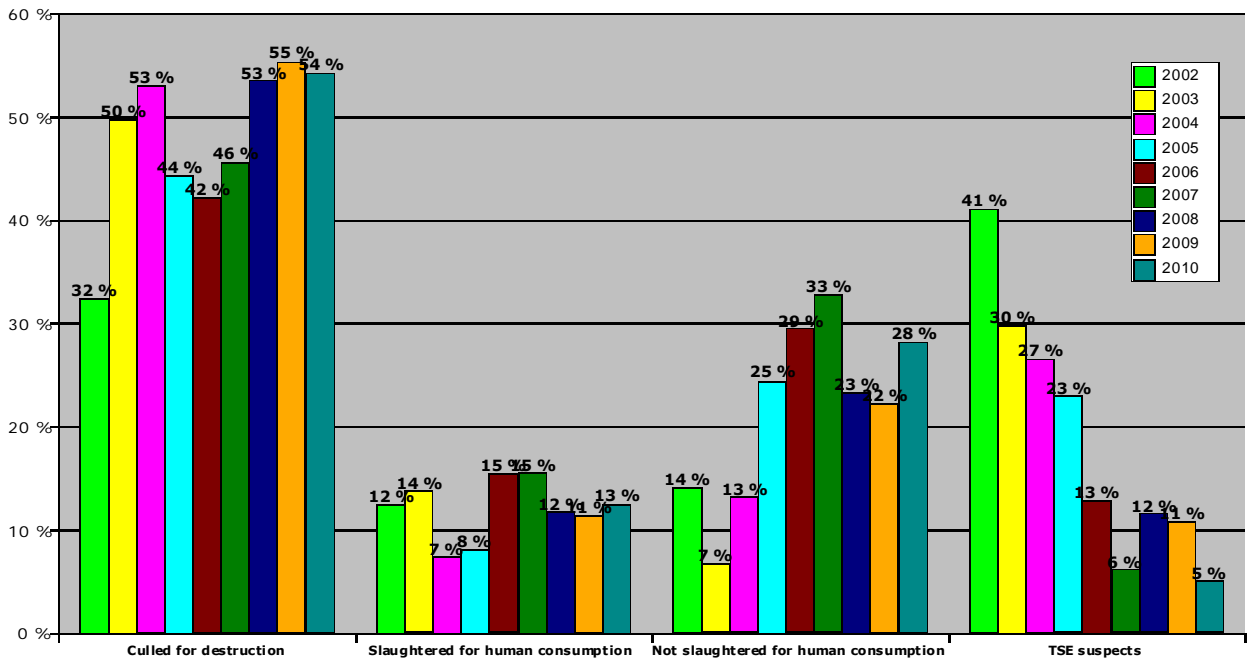
\* cases per 10 000 tests

**Table SR7: TSE cases in ovine and caprine animals culled in the frame of TSE eradication in 2010**

	Sheep					Goats				
	Total tests	Total TSE cases	2010	Ratio* 2009	2008	Total tests	Total TSE cases	2010	Ratio* 2009	2008
Belgique/België	0	0			0,0	0	0		0,0	0,0
Bulgaria	0	0			0,0	0	0		0,0	0,0
Ceská Republika	0	0			1750,0	0	0		0,0	0,0
Danmark	0	0			0,0	0	0		0,0	0,0
Deutschland	278	0	0,0	0,0	0,0	3	0	0,0	0,0	0,0
Eesti	0	0			0,0	0	0		0,0	0,0
Ellas	4 358	456	1046,4	1213,8	945,5	789	51	646,4	471,8	380,9
España	2 213	58	262,1	170,4	343,4	1 289	2	15,5	277,8	177,5
France	1 450	13	89,7	36,7	64,2	711	20	281,3	109,5	101,3
Ireland	484	8	165,3	769,2	64,6	0	0		0,0	0,0
Italia	2 105	42	199,5	276,4	333,9	241	1	41,5	186,9	82,0
Kypros	0	0			0,0	0	0		0,0	0,0
Latvija	0	0			0,0	0	0		0,0	0,0
Lietuva	0	0			0,0	0	0		0,0	0,0
Luxembourg	0	0			0,0	0	0		0,0	0,0
Magyarország	1 136	0	0,0	5,0	7,6	0	0		0,0	0,0
Malta	0	0			0,0	0	0		0,0	0,0
Nederland	48	0	0,0	294,1	400,0	0	0		0,0	0,0
Österreich	0	0		0,0	0,0	0	0		0,0	0,0
Polska	0	0		0,0	0,0	0	0		0,0	0,0
Portugal	0	0		0,0	51,6	5	0	0,0	0,0	0,0
Romania	43	1	232,6	0,0	0,0	0	0		0,0	0,0
Slovenija	113	1	88,5		434,8	0	0		0,0	0,0
Slovensko	0	0			254,2	0	0		0,0	0,0
Suomi/Finland	0	0			0,0	0	0		0,0	0,0
Sverige	0	0			0,0	0	0		0,0	0,0
United Kingdom	32	0	0,0	16,9	0,0	0	0		0,0	0,0
<b>EU 27</b>	<b>12 260</b>	<b>579</b>	<b>472,3</b>	<b>456,0</b>	<b>304,1</b>	<b>3 038</b>	<b>74</b>	<b>243,6</b>	<b>334,0</b>	<b>246,7</b>
<b>EU 27-CY</b>	<b>12 260</b>	<b>579</b>	<b>472,3</b>	<b>456,0</b>	<b>304,1</b>	<b>3 038</b>	<b>74</b>	<b>243,6</b>	<b>334,0</b>	<b>246,7</b>
Norway	332	1	30,1	73,0	0,0	0	0		0,0	0,0
<b>Others</b>	<b>332</b>	<b>1</b>	<b>30,1</b>	<b>73,0</b>	<b>0,0</b>				<b>0,0</b>	<b>0,0</b>

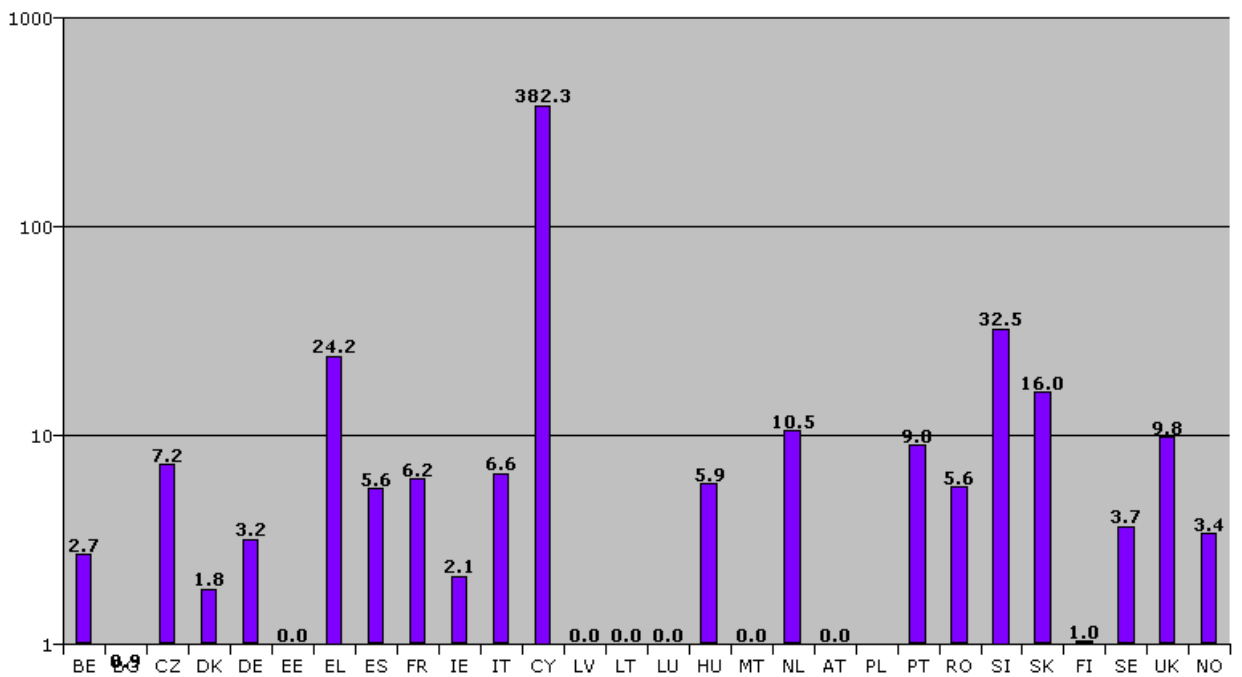
\* cases per 10 000 tests

**Chart SR4: percentage of cases per target group in sheep in the EU 27 except Cyprus (and Norway) from 2002 to 2010**



**Chart SR5: Prevalence rate in tested ovine animals (cases per 10 000 tests) slaughtered for human consumption in the Member States and Norway from 2002 to 2010**

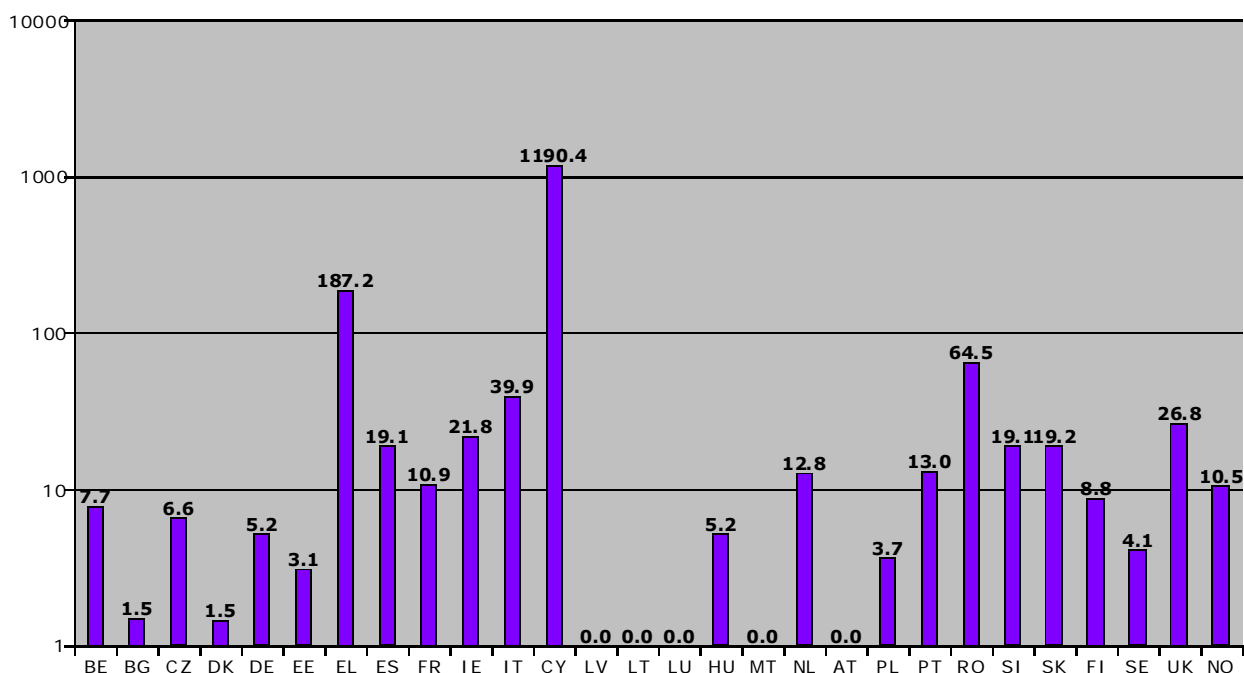
**NB: logarithmic scale**



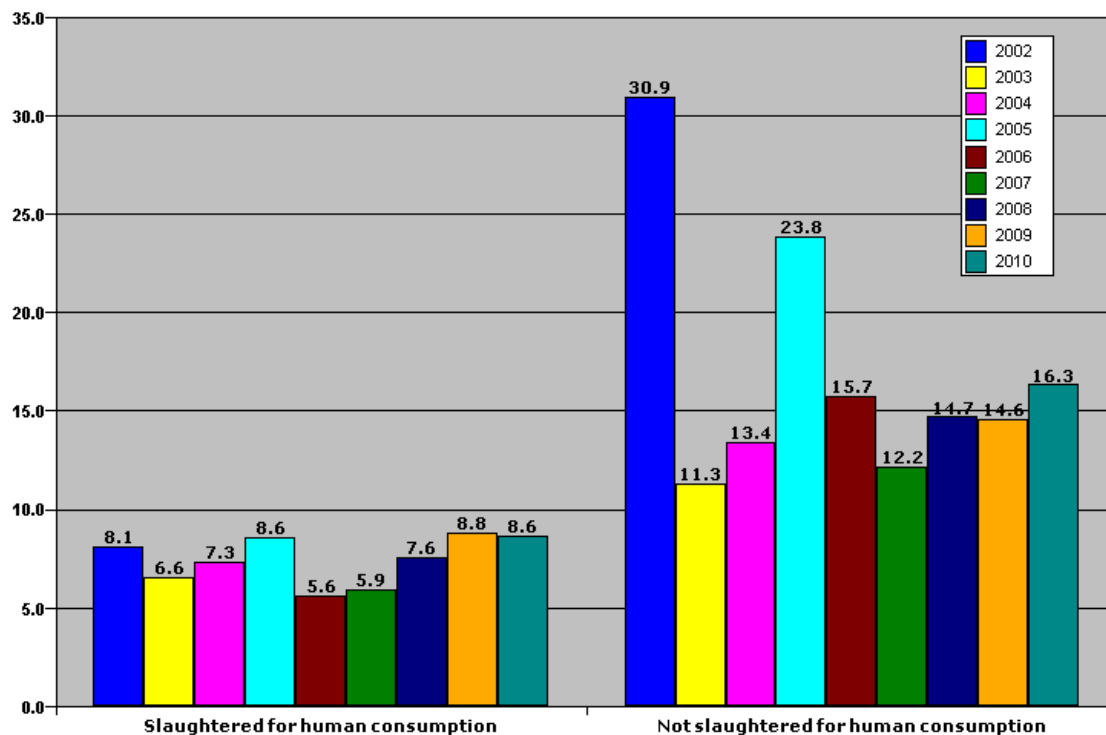


**Chart SR6: Prevalence in tested ovine animals (cases per 10 000 tests) not slaughtered for human consumption (risk animals) in the Member States and Norway from 2002 to 2010**

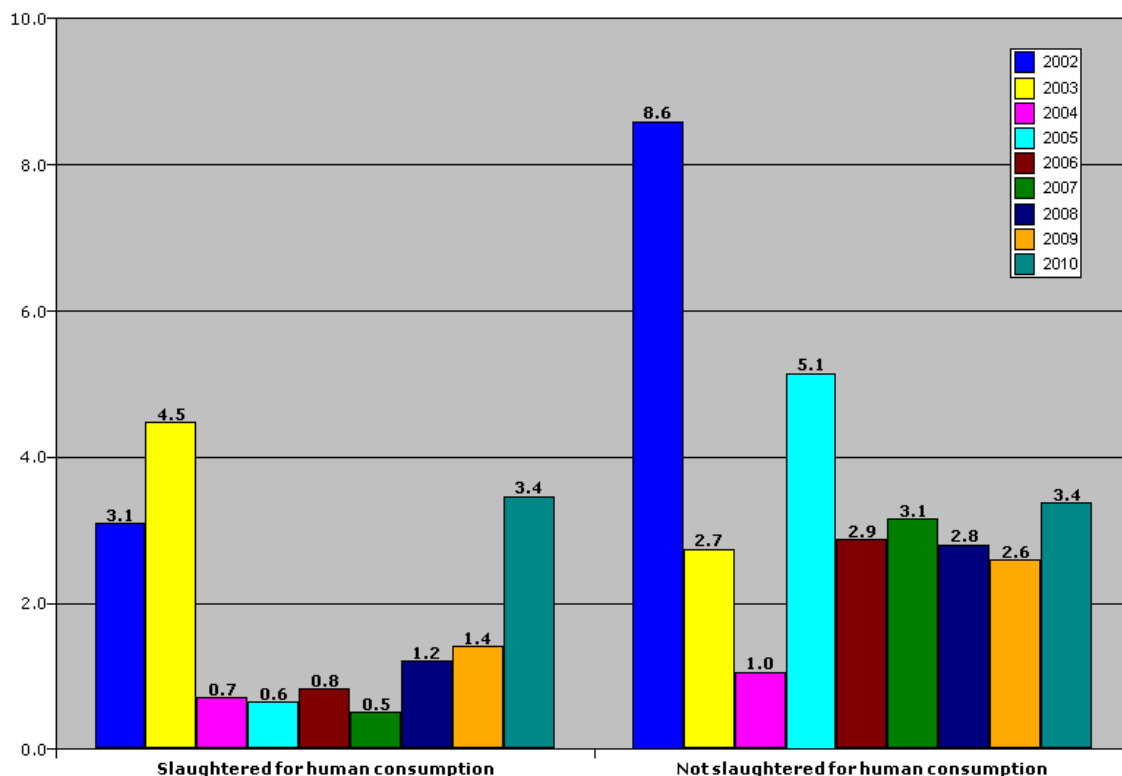
**NB: logarithmic scale**



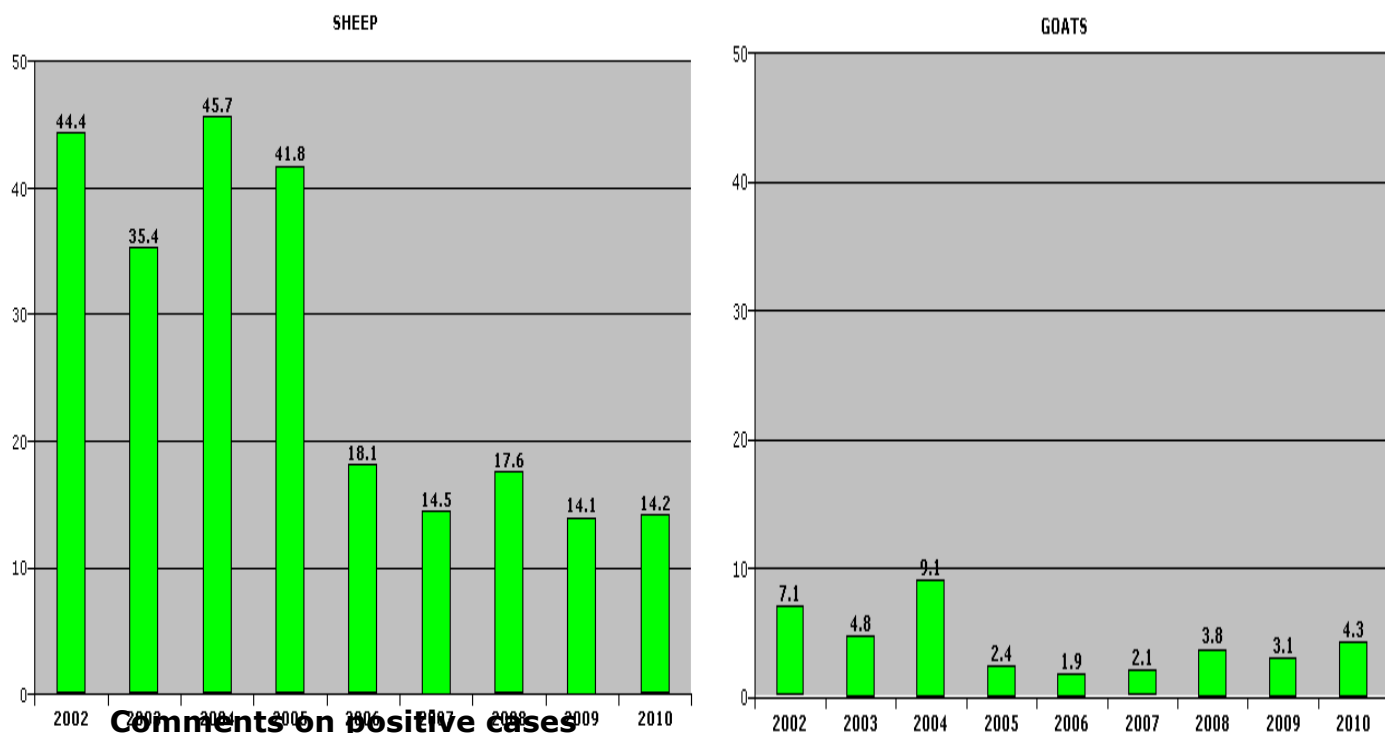
**Chart SR7: Prevalence rate (cases per 10 000 tested) of TSE in healthy slaughtered and risk ovine animals in the EU 27 (except Cyprus) and Norway tested from 2002 to 2010**



**Chart SR8: Prevalence rate (cases per 10 000 tests) of TSE in healthy slaughtered and risk caprine animals in the EU 27 (except Cyprus) and Norway tested from 2002 to 2010**



**Chart SR9: Evolution of the overall prevalence rate (cases per 10 000 tested) of TSE in small ruminants in the EU (except Cyprus and Ellas) from 2002 to 2010**



Comments on positive cases

There is still no clear trend with regard to the evolution of the prevalence of TSE in tested animals of both species as well as in the different target groups.

The prevalence of TSE in sheep is higher than in goats in the EU (Cyprus and Greece excluded).

Prevalence in tested animals not slaughtered for human consumption (risk animals, mainly fallen stock) is higher than in healthy slaughtered sheep or goats.

Cyprus seems to have a very significantly higher prevalence of TSE in goats than any other Member States.

In the sheep sector, Cyprus and to a lower extent Greece show a higher prevalence of TSE than the other Member States.

### 5.3. Atypical cases

Table SR8: TSE cases in small ruminants reported as atypical from 2004 to 2010 (animals culled in the frame of TSE eradication are excluded)

SHEEP	2004			2005			2006			2007			2008			2009			2010		
	Total cases	Atypicals	%	Total cases	Atypicals	%	Total cases	Atypicals	%	Total cases	Atypicals	%	Total cases	Atypicals	%	Total cases	Atypicals	%	Total cases	Atypicals	%
Belgique/België	4	1	25 %	2	1	50 %	3	3	100 %	3	2	67 %	0		0 %	0		0 %	0		0 %
Bulgaria	0	0	0 %	0	0	0 %	0	0	0 %	0		0 %	3	2	67 %	2		0 %	3		0 %
Ceská Republika	2	0	0 %	1	0	0 %	0	0	0 %	1		0 %	2		0 %	0		0 %	0		0 %
Danmark	0	0	0 %	0	0	0 %	3	3	100 %	0		0 %	2	2	100 %	0		0 %	2	2	100 %
Deutschland	43	0	0 %	28	0	0 %	24	0	0 %	15	9	60 %	7	3	43 %	11	4	36 %	13	8	62 %
Eesti	0	0	0 %	0	0	0 %	0	0	0 %	0		0 %	0		0 %	0		0 %	1	1	100 %
Ellas	48	0	0 %	258	0	0 %	230	2	1 %	121	1	1 %	188		0 %	187		0 %	161	n/a	
España	20	1	5 %	43	2	5 %	63	17	27 %	44		0 %	101		0 %	70		0 %	89	20	22 %
France	59	9	15 %	79	13	16 %	380	186	49 %	251	159	63 %	71	47	66 %	38	27	71 %	31	28	90 %
Ireland	55	2	4 %	27	0	0 %	54	0	0 %	37	1	3 %	16		0 %	25	2	8 %	16	2	13 %
Italia	24	0	0 %	58	7	12 %	134	15	11 %	121	22	18 %	80	8	10 %	70		0 %	62		0 %
Kypros	1 208	0	0 %	715	0	0 %	1 327	0	0 %	772		0 %	539		0 %	196		0 %	44	n/a	
Magyarország	0	0	0 %	0	0	0 %	7	5	71 %	6	2	33 %	8	7	88 %	14	14	100 %	8	7	88 %
Nederland	39	0	0 %	37	2	5 %	43	0	0 %	25	2	8 %	12		0 %	3		0 %	2	1	50 %
Österreich	0	0	0 %	0	0	0 %	0	0	0 %	0		0 %	0		0 %	0		0 %	0		0 %
Polska	0	0	0 %	0	0	0 %	0	0	0 %	0		0 %	0		0 %	4	4	100 %	2	2	100 %
Portugal	28	28	100 %	57	57	100 %	65	66	102 %	95	88	93 %	89	78	88 %	46	36	78 %	47	46	98 %
Romania	n/a	n/a		n/a			9	0	0 %	24		0 %	26		0 %	10		0 %	16		0 %
Slovenija	1	0	0 %	4	0	0 %	13	0	0 %	9		0 %	0		0 %	3		0 %	4	2	50 %
Slovensko	19	0	0 %	9	0	0 %	10	1	10 %	8		0 %	18		0 %	1	1	100 %	5	3	60 %
Suomi/Finland	1	1	100 %	1	1	100 %	2	2	100 %	1	1	100 %	0		0 %	0		0 %	3		0 %
Sverige	2	2	100 %	1	1	100 %	8	5	63 %	4	2	50 %	0		0 %	2	2	100 %	4	1	25 %
United Kingdom	331	17	5 %	346	30	9 %	217	60	28 %	81	40	49 %	26	17	65 %	36	26	72 %	20	19	95 %
<b>EU 27</b>	<b>1 884</b>	<b>61</b>	<b>3 %</b>	<b>1 666</b>	<b>114</b>	<b>7 %</b>	<b>2 592</b>	<b>365</b>	<b>14 %</b>	<b>1 618</b>	<b>329</b>	<b>20 %</b>	<b>1 188</b>	<b>164</b>	<b>14 %</b>	<b>718</b>	<b>116</b>	<b>16 %</b>	<b>533</b>	<b>142</b>	<b>27 %</b>
Norway	15	14	93 %	4	4	100 %	9	8	89 %	9	9	100 %	7	7	100 %	12	12	100 %	4	4	100 %
Others	15	14	93 %	4	4	100 %	9	8	89 %	9	9	100 %	7	7	100 %	12	12	100 %	4	4	100 %

GOATS	2004			2005			2006			2007			2008			2009			2010		
	Total cases	Atypicals	%	Total cases	Atypicals	%	Total cases	Atypicals	%	Total cases	Atypicals	%	Total cases	Atypicals	%	Total cases	Atypicals	%	Total cases	Atypicals	%
Bulgaria	0	0	0 %	0	0	0 %	0	0	0 %	0	0	0 %	0	0	0 %	1	0	0 %	3	0	0 %
Ellas	13	0	0 %	26	0	0 %	10	0	0 %	14	0	0 %	16	0	0 %	4	0	0 %	14	n/a	
España	0	0	0 %	5	0	0 %	9	4	44 %	13	0	0 %	6	0	0 %	5	0	0 %	10	5	50 %
France	4	0	0 %	15	6	40 %	12	1	8 %	5	4	80 %	12	8	67 %	6	3	50 %	7	5	71 %
Italia	2	0	0 %	8	3	38 %	12	6	50 %	5	3	60 %	1	1	100 %	7	0	0 %	3	0	0 %
Kypros	354	0	0 %	387	0	0 %	713	0	0 %	1 158	0	0 %	1 094	0	0 %	799	0	0 %	313	n/a	
Portugal	0	0	0 %	0	0	0 %	0	0	0 %	0	1	0 %	2	1	50 %	1	3	300 %	4	2	50 %
Romania	n/a	n/a		n/a			0	0	0 %	2	0	0 %	0	0	0 %	0	0	0 %	0	0	0 %
Suomi/Finland	0	0	0 %	2	0	0 %	0	0	0 %	0	0	0 %	0	0	0 %	1	0	0 %	0	0	0 %
United Kingdom	0	0	0 %	4	0	0 %	13	0	0 %	26	0	0 %	18	0	0 %	1	0	0 %	7	0	0 %
<b>EU 27</b>	<b>373</b>	<b>0</b>	<b>0 %</b>	<b>447</b>	<b>9</b>	<b>2 %</b>	<b>769</b>	<b>11</b>	<b>1 %</b>	<b>1 223</b>	<b>8</b>	<b>1 %</b>	<b>1 149</b>	<b>10</b>	<b>1 %</b>	<b>825</b>	<b>6</b>	<b>1 %</b>	<b>361</b>	<b>12</b>	<b>3 %</b>
Norway	0	0	0 %	0	0	0 %	1	1	100 %	0	0	0 %	0	0	0 %	0	0	0 %	0	0	0 %
Others	0	0	0 %	0	0	0 %	1	1	100 %	0	0	0 %	0	0	0 %	0	0	0 %	0	0	0 %

**Table SR9: Prevalence rate of TSE cases reported as atypical in ovine animals tested from 2004 to 2010 (animals culled in the frame of TSE eradication are excluded)**

SHEEP	2004			2005			2006			2007			2008			2009			2010		
	Animals tested	Atypicals	Ratio*	Animals tested	Atypicals	Ratio*	Animals tested	Atypicals	Ratio*	Animals tested	Atypicals	Ratio*	Animals tested	Atypicals	Ratio*	Animals tested	Atypicals	Ratio*	Animals tested	Atypicals	Ratio*
Belgique/België	1 587	1	6,3	1 469	1	6,8	10 167	3	3,0	9 204	2	2,2	3 221	0	0,0	1 487	0	0,0	1 610	0	0,0
Bulgaria	1 145	0	0,0	6 934	0	0,0	10 589	0	0,0	12 725	0	0,0	15 355	2	1,3	13 740	0	0,0	15 018	0	0,0
Česká Republika	958	0	0,0	448	0	0,0	1 099	0	0,0	2 829	0	0,0	914	0	0,0	582	0	0,0	726	0	0,0
Danmark	5 349	0	0,0	4 394	0	0,0	8 067	3	3,7	6 197	0	0,0	6 950	2	2,9	6 055	0	0,0	6 069	2	3,3
Deutschland	81 173	0	0,0	44 495	0	0,0	41 771	0	0,0	40 367	9	2,2	26 539	3	1,1	23 169	4	1,7	22 679	8	3,5
Eesti	410	0	0,0	1 251	0	0,0	2 403	0	0,0	2 918	0	0,0	745	0	0,0	654	0	0,0	718	1	13,9
Ellas	8 738	0	0,0	6 574	0	0,0	9 356	2	2,1	9 075	1	1,1	14 074	0	0,0	17 385	0	0,0	20 402	n/a	
España	25 890	1	0,4	29 204	2	0,7	89 021	17	1,9	50 998	0	0,0	28 879	0	0,0	29 320	0	0,0	24 957	20	8,0
France	24 619	9	3,7	34 701	13	3,7	488 254	186	3,8	327 374	159	4,9	91 329	47	5,1	57 629	27	4,7	59 573	28	4,7
Ireland	20 344	2	1,0	21 069	0	0,0	57 245	0	0,0	43 132	1	0,2	22 449	0	0,0	20 933	2	1,0	21 458	2	0,9
Italia	21 879	0	0,0	22 731	7	3,1	55 920	15	2,7	91 991	22	2,4	33 962	8	2,4	24 316	0	0,0	22 726	0	0,0
Kypros	2 160	0	0,0	3 337	0	0,0	6 108	0	0,0	8 677	0	0,0	8 835	0	0,0	2 246	0	0,0	778	n/a	
Magyarország	5 965	0	0,0	9 074	0	0,0	12 061	5	4,1	12 182	2	1,6	13 211	7	5,3	11 755	14	11,9	12 398	7	5,6
Nederland	19 091	0	0,0	18 997	2	1,1	36 102	0	0,0	30 803	2	0,6	20 454	0	0,0	19 996	0	0,0	20 226	1	0,5
Österreich	2 577	0	0,0	4 297	0	0,0	5 947	0	0,0	6 588	0	0,0	5 938	0	0,0	5 914	0	0,0	5 539	0	0,0
Polska	667	0	0,0	0	0	0,0	2 563	0	0,0	5 617	0	0,0	7 647	0	0,0	11 174	4	3,6	15 022	2	1,3
Portugal	44 224	28	6,3	72 516	57	7,9	63 711	66	10,4	85 101	88	10,3	86 380	78	9,0	37 363	36	9,6	38 131	46	12,1
Romania	n/a	n/a	0,0	n/a	n/a		14 867	0	0,0	13 738	0	0,0	16 449	0	0,0	10 079	0	0,0	8 107	0	0,0
Slovenija	1 006	0	0,0	1 878	0	0,0	1 757	0	0,0	1 845	0	0,0	1 981	0	0,0	3 584	0	0,0	3 608	2	5,5
Slovensko	1 821	0	0,0	2 615	0	0,0	7 212	1	1,4	8 358	0	0,0	2 212	0	0,0	2 168	1	4,6	2 018	3	14,9
Suomi/Finland	1 305	1	7,7	1 294	1	7,7	3 700	2	5,4	3 020	1	3,3	1 164	0	0,0	1 138	0	0,0	949	0	0,0
Sverige	3 154	2	6,3	3 240	1	3,1	8 769	5	5,7	9 922	2	2,0	3 840	0	0,0	4 808	2	4,2	6 500	1	1,5
United Kingdom	16 822	17	10,1	37 157	30	8,1	73 544	60	8,2	44 100	40	9,1	24 657	17	6,9	23 094	26	11,3	19 618	19	9,7
<b>EU 27</b>	<b>290 884</b>	<b>61</b>	<b>2,1</b>	<b>327 675</b>	<b>114</b>	<b>3,5</b>	<b>1 010 233</b>	<b>363</b>	<b>3,6</b>	<b>826 761</b>	<b>329</b>	<b>4,0</b>	<b>437 185</b>	<b>164</b>	<b>3,8</b>	<b>328 589</b>	<b>116</b>	<b>3,5</b>	<b>328 830</b>	<b>142</b>	<b>4,3</b>
Norway	13 845	14	10,1	14 512	4	2,8	14 931	8	5,4	13 556	9	6,6	13 143	7	5,3	13 067	12	9,2	12 994	4	3,1
<b>Others</b>	<b>13 845</b>	<b>14</b>	<b>10,1</b>	<b>14 512</b>	<b>4</b>	<b>2,8</b>	<b>14 931</b>	<b>8</b>	<b>5,4</b>	<b>13 556</b>	<b>9</b>	<b>6,6</b>	<b>13 143</b>	<b>7</b>	<b>5,3</b>	<b>13 067</b>	<b>12</b>	<b>9,2</b>	<b>12 994</b>	<b>4</b>	<b>3,1</b>

\*cases per 10 000 tests

**Table SR10: Prevalence rate of TSE cases reported as atypical in caprine animals tested from 2004 to 2009 (animals culled in the frame of TSE eradication are excluded)**

GOATS	2004			2005			2006			2007			2008			2009			2010		
	Animals tested	Atypicals	Ratio*	Animals tested	Atypicals	Ratio*	Animals tested	Atypicals	Ratio*	Animals tested	Atypicals	Ratio*	Animals tested	Atypicals	Ratio*	Animals tested	Atypicals	Ratio*	Animals tested	Atypicals	Ratio*
Bulgaria	724	0	0,0	1 867	0	0,0	2 640	0	0,0	2 511	0	0,0	1 813	0	0,0	1 800	0	0,0	1 805	0	0,0
Ellas	3 190	0	0,0	4 371	0	0,0	6 341	0	0,0	5 297	0	0,0	6 313	0	0,0	8 471	0	0,0	8 748	n/a	
España	3 667	0	0,0	39 503	0	0,0	56 142	4	0,7	38 194	0	0,0	21 319	0	0,0	22 773	0	0,0	22 944	5	2,2
France	5 550	0	0,0	149 056	6	0,4	162 137	1	0,1	178 765	4	0,2	78 165	8	1,0	51 087	3	0,6	70 482	5	0,7
Italia	3 542	0	0,0	28 142	3	1,1	27 275	6	2,2	24 319	3	1,2	14 616	1	0,7	13 525	0	0,0	11 946	0	0,0
Kypros	1 335	0	0,0	3 387	0	0,0	6 025	0	0,0	6 781	0	0,0	5 496	0	0,0	2 997	0	0,0	1 396	n/a	
Portugal	7 287	0	0,0	5 638	0	0,0	6 367	0	0,0	8 634	1	1,2	8 567	1	1,2	6 874	3	4,4	8 486	2	2,4
Romania	n/a	n/a					0	0,0	618	0	0,0	929	0	0,0	516	0	0,0	664	0	0,0	
Suomi/Finland	261	0	0,0	593	0	0,0	516	0	0,0	431	0	0,0	274	0	0,0	350	0	0,0	270	0	0,0
United Kingdom	147	0	0,0	2 645	0	0,0	5 034	0	0,0	2 732	0	0,0	750	0	0,0	648	0	0,0	1 250	0	0,0
<b>EU 27</b>	<b>25 703</b>	<b>0</b>	<b>0,0</b>	<b>235 202</b>	<b>9</b>	<b>0,4</b>	<b>272 477</b>	<b>11</b>	<b>0,4</b>	<b>268 282</b>	<b>8</b>	<b>0,3</b>	<b>138 242</b>	<b>10</b>	<b>0,7</b>	<b>109 041</b>	<b>6</b>	<b>0,6</b>	<b>127 991</b>	<b>12</b>	<b>0,9</b>
Norway	304	0	0,0	2 804	0	0,0	5 651	1	1,8	3 462	0	0,0	354	0	0,0	360	0	0,0	325	0	0,0
<b>Others</b>	<b>304</b>	<b>0</b>	<b>0,0</b>	<b>2 804</b>	<b>0</b>	<b>0,0</b>	<b>5 651</b>	<b>1</b>	<b>1,8</b>	<b>3 462</b>	<b>0</b>		<b>354</b>	<b>0</b>		<b>360</b>	<b>0</b>		<b>325</b>	<b>0</b>	

\*cases per 10 000 tests

### Comments on atypical cases

Atypical TSE cases were demonstrated in several Member States. Atypical TSE even accounts quite consistently, year after year, for a large majority if not 100% of TSE cases in some Member States, e.g. in Denmark, Portugal, Hungary or Sweden. In some other Member States, e.g. France and the UK, the proportion of atypical TSE cases has been steadily growing since 2004, passing from a small share to a large majority of the TSE cases. These results should however be interpreted with caution as the monitoring requirements have changed during this period and the testing and sampling methods have an influence on the detection of atypical cases.

The definition of atypical cases detected from 2004 to 2010 is in line with the Opinion of the Scientific Panel on Biological Hazards of the European Food Safety Authority on classification of atypical TSE cases in small ruminant adopted on 26 October 2005.

## 5.4. TSE discriminatory tests

**Table SR11: Discriminatory testing on TSE cases confirmed in sheep and goats in 2010**

Results of primary molecular testing with a discriminatory immunoblotting (Point 3.2 c(i), Chapter C , Annex X to Regulation (EC) 999/2001).

SHEEP	Total number of cases with discriminatory testing	Excluding BSE	BSE like	Inconclusive
Bulgaria	4	4	0	0
Danmark	2	2	0	0
Deutschland	10	10	0	0
Eesti	1	1	0	0
España	147	145	0	2
France	44	44	0	0
Ireland	8	8	0	0
Italia	104	104	0	0
Magyarország	7	7	0	0
Nederland	2	1	0	1
Polska	2	2	0	0
Portugal	49	49	0	0
Romania	17	17	0	0
Slovenija	5	5	0	0
Slovensko	5	5	0	0
Sverige	4	4	0	0
United Kingdom	22	22	0	0
<b>EU 27</b>	<b>433</b>	<b>430</b>	<b>0</b>	<b>3</b>
Norway	5	5	0	0
Others	5	5	0	0

GOATS	Total number of cases with discriminatory testing	Excluding BSE	BSE like	Inconclusive
Bulgaria	2	2	0	0
España	10	10	0	0
France	27	27	0	0
Italia	4	4	0	0
Portugal	2	2	0	0
United Kingdom	7	7	0	0
<b>EU 27</b>	<b>52</b>	<b>52</b>	<b>0</b>	<b>0</b>

## 5.5. Age distribution of TSE positive cases in ovine animals

Table SR12: Year of birth distribution of positive cases in ovine animals of known age tested in 2010

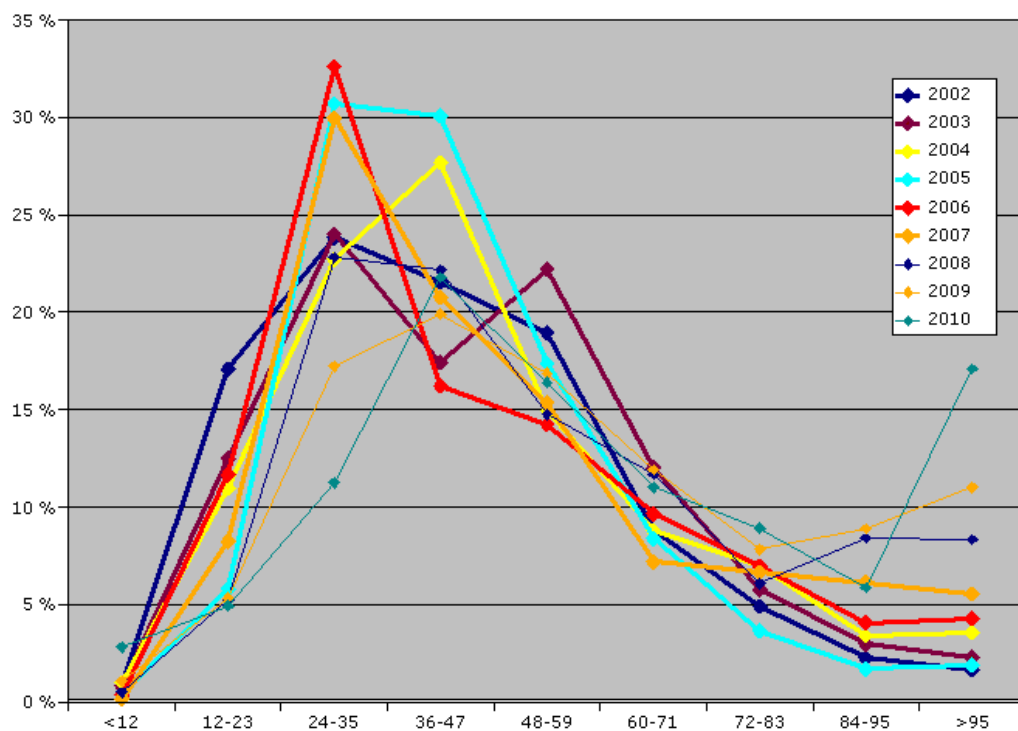
% of cases with known age born in:													Number of cases with known age
	<1997	1997	1998	1999	2000	2001	2002	2003	2004	2005	2006	2007	
Bulgaria												100.0 %	3
Eesti									100.0 %				1
Polska					50.0 %			50.0 %					2
Danmark					50.0 %		50.0 %						2
España		0.8 %	0.8 %	0.8 %	11.6 %	1.6 %	3.1 %	3.9 %	7.0 %	9.3 %	24.0 %	37.2 %	129
France			2.9 %		11.8 %	11.8 %	5.9 %	8.8 %	38.2 %	8.8 %	11.8 %		34
Ireland							5.3 %		5.3 %	10.5 %	21.1 %	57.9 %	19
Italia				4.5 %	2.3 %	3.4 %	4.5 %	6.8 %	10.2 %	14.8 %	27.3 %	26.1 %	88
Magyarország		14.3 %		14.3 %		14.3 %	28.6 %		28.6 %				7
Nederland											100.0 %		2
Portugal			2.8 %	2.8 %	8.3 %	11.1 %	19.4 %	13.9 %	16.7 %	13.9 %	8.3 %	2.8 %	36
Romania		25.0 %			12.5 %	37.5 %				12.5 %		12.5 %	8
Slovenija						50.0 %				25.0 %	25.0 %		4
Slovensko							40.0 %	20.0 %	20.0 %			20.0 %	5
Sverige	50.0 %		25.0 %	25.0 %									4
United Kingdom						10.0 %		20.0 %	10.0 %	20.0 %	40.0 %		10
Norway							40.0 %		20.0 %	40.0 %			5



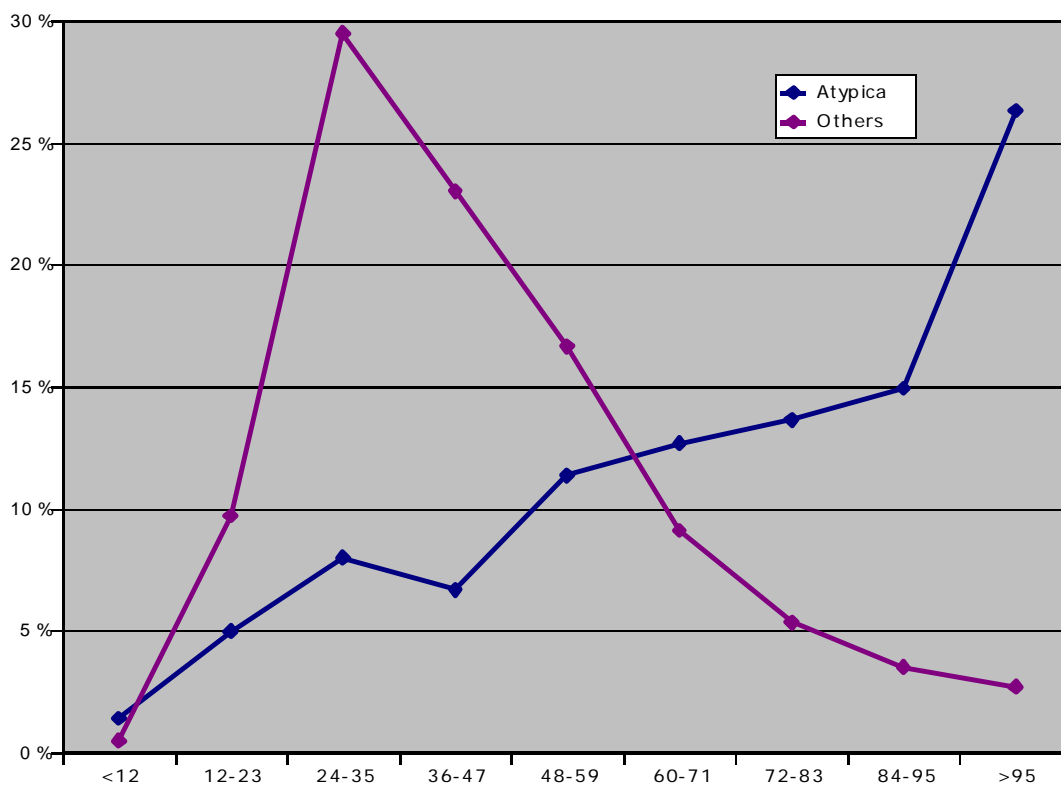
**Table SR13: Age distribution (month of age at confirmation) of positive cases in ovine animals of known age tested in 2010**

% of cases with known age belonging to the age group (months):		24-35	36-47	48-59	60-71	72-83	84-95	>95	Number of cases with know age
<b>Bulgaria</b>			100 %						<b>3</b>
<b>Eesti</b>						100 %			<b>1</b>
<b>Polska</b>							50 %	50 %	<b>2</b>
<b>Danmark</b>								100 %	<b>2</b>
<b>España</b>		2 %	40 %	19 %	12 %	5 %	2 %	19 %	<b>129</b>
<b>France</b>	3 %			18 %	18 %	26 %	9 %	26 %	<b>34</b>
<b>Ireland</b>			53 %	26 %	11 %	5 %		5 %	<b>19</b>
<b>Italia</b>	3 %		25 %	27 %	15 %	11 %	7 %	11 %	<b>88</b>
<b>Magyarország</b>					14 %	14 %	14 %	57 %	<b>7</b>
<b>Nederland</b>				100 %					<b>2</b>
<b>Portugal</b>	3 %		3 %	11 %	14 %	17 %	17 %	36 %	<b>36</b>
<b>Romania</b>	25 %	13 %		13 %				50 %	<b>8</b>
<b>Slovenija</b>			25 %		25 %			50 %	<b>4</b>
<b>Slovensko</b>			20 %			20 %	20 %	40 %	<b>5</b>
<b>Sverige</b>	75 %							25 %	<b>4</b>
<b>United Kingdom</b>			10 %	30 %	20 %	10 %	20 %	10 %	<b>10</b>
<b>Norway</b>					40 %	20 %	40 %		<b>5</b>

**Chart SR10: Evolution of the age distribution of positive cases in sheep in the EU 27 and Norway since 2002**



**Chart SR11: Age distribution of positive cases in sheep detected since 2002 in the EU 25 and Norway: comparison of cases reported as atypical with other cases**



## 5.6. Genotyping

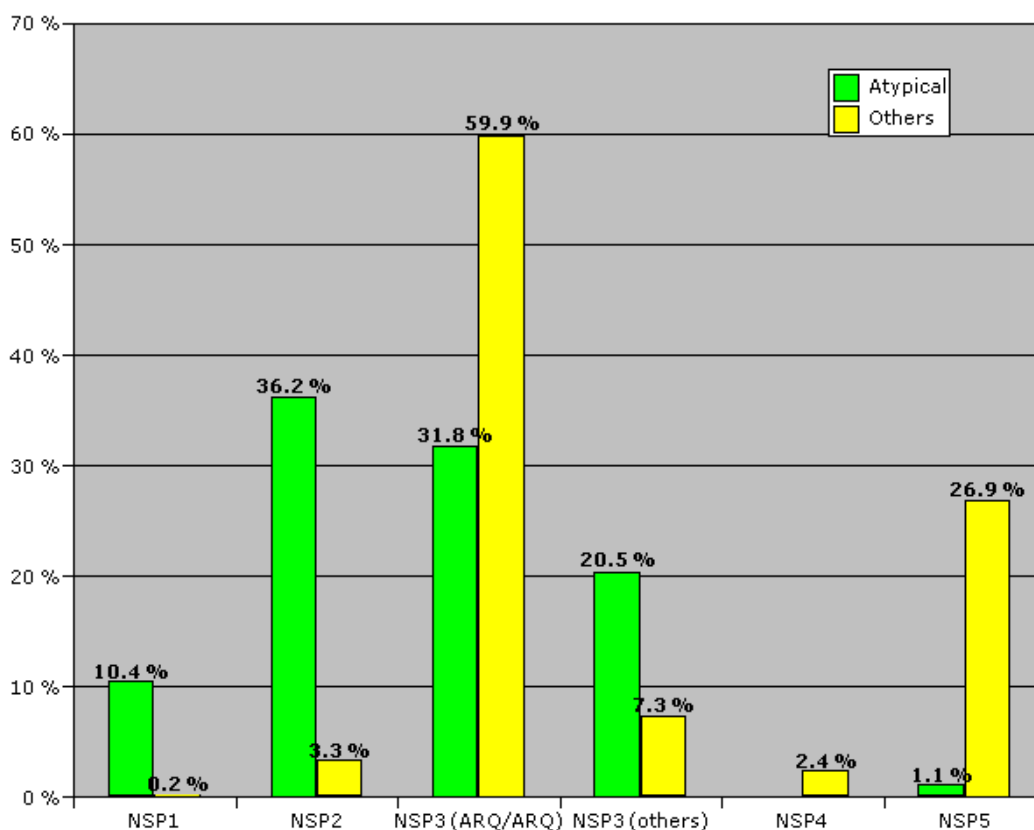
The genotypes found in positive cases and by random sampling were grouped in accordance with the NSP classification system used in the United Kingdom for genetic resistance to classical scrapie and BSE:

<b>NSP1</b>	<b>ARR/ARR</b>	<b>Genetically most resistant</b>
<b>NSP2</b>	<b>ARR/ARQ, ARR/ARH, ARR/AHQ</b>	<b>Genetically resistant</b>
<b>NSP3 (ARQ/ARQ)</b>	<b>ARQ/ARQ</b>	<b>Genetically little resistance (ARQ/ARQ may be scientifically reviewed)</b>
<b>NSP3 (others)</b>	<b>AHQ/AHQ, ARH/ARH, ARH/ARQ, AHQ/ARH, AHQ/ARQ</b>	
<b>NSP4</b>	<b>ARR/VRQ</b>	<b>Genetically susceptible</b>
<b>NSP5</b>	<b>ARQ/VRQ, ARH/VRQ, AHQ/VRQ, VRQ/VRQ</b>	<b>Genetically highly susceptible</b>

**Table SR14: Distribution of known genotypes in confirmed TSE cases in 2010**

	Known no of TSE cases genotyped	% of TSE cases genotyped	Distribution of known genotypes					
			NSP1	NSP2	NSP3		NSP4	NSP5
					ARQ/ARQ	Others		
<b>Polska</b>	2	100 %	0%	0%	50 %	50 %	0%	0%
<b>Danmark</b>	1	50 %	0%	0%	0%	100 %	0%	0%
<b>España</b>	127	86 %	0%	2 %	87 %	9 %	0%	1 %
<b>France</b>	35	80 %	3 %	51 %	40 %	3 %	0%	3 %
<b>Ireland</b>	16	67 %	6 %	0%	50 %	6 %	0%	38 %
<b>Italia</b>	104	100 %	0%	0%	89 %	11 %	0%	0%
<b>Magyarország</b>	7	88 %	0%	29 %	0%	71 %	0%	0%
<b>Nederland</b>	2	100 %	0%	50 %	0%	0%	50 %	0%
<b>Portugal</b>	7	15 %	14 %	43 %	43 %	0%	0%	0%
<b>Romania</b>	17	100 %	0%	0%	35 %	29 %	0%	35 %
<b>Slovenija</b>	5	100 %	0%	20 %	20 %	20 %	0%	40 %
<b>Slovensko</b>	3	60 %	0%	67 %	0%	33 %	0%	0%
<b>Sverige</b>	1	25 %	0%	0%	100 %	0%	0%	0%
<b>United Kingdom</b>	15	75 %	13 %	60 %	13 %	7 %	7 %	0%
<b>EU 25</b>	<b>340</b>	<b>79 %</b>	<b>1 %</b>	<b>11 %</b>	<b>70 %</b>	<b>11 %</b>	<b>1 %</b>	<b>5 %</b>
<b>Norway</b>	5	100 %	0%	20 %	0%	60 %	0%	20 %
<b>Others</b>	<b>5</b>	<b>100 %</b>	<b>0%</b>	<b>20 %</b>	<b>0%</b>	<b>60 %</b>	<b>0%</b>	<b>20 %</b>

**Chart SR12: Genotype distribution in atypical cases compared to other TSE cases detected between 2002 and 2010**



**Table SR15: Age distribution of TSE cases per genotype in the EU and Norway detected between 2002 and 2010**

% of cases belonging to the age group (years):											Total	
	<1	1	2	3	4	5	6	7	>7	Unkown		
NSP1	1 %	3 %	9 %	6 %	11 %	9 %	7 %	12 %	20 %	20 %	0%	127
NSP2	1 %	5 %	11 %	8 %	9 %	9 %	9 %	12 %	17 %	19 %	0%	617
NSP3 (ARQ/ARQ)	0 %	7 %	26 %	20 %	16 %	9 %	6 %	4 %	5 %	7 %	0%	4 579
NSP3 (others)	1 %	4 %	10 %	17 %	15 %	11 %	7 %	7 %	9 %	19 %	0%	738
NSP4	0%	2 %	5 %	11 %	14 %	14 %	10 %	8 %	4 %	34 %	0%	168
NSP5	0 %	6 %	17 %	17 %	15 %	9 %	3 %	2 %	1 %	30 %	0%	1 909
Unknown	1 %	14 %	30 %	14 %	9 %	6 %	5 %	4 %	6 %	11 %	0 %	2 076
Total	52	791	2 284	1 723	1 393	877	585	452	574	1 481	2	10 214
	0.5%	7.7%	22.3%	16.8%	13.6%	8.5%	5.7%	4.4%	5.6%	14.4%	0.0%	

**Table SR16: Distribution of genotypes in randomly genotyped ovine animals in EU Member States and Norway in 2010**

	NSP1	NSP2	NSP3		NSP4	NSP5	Others	Number of samples
			ARQ/ARQ	Others				
Belgique/België	48.8 %	29.5 %	7.8 %	7.4 %	2.5 %	2.0 %	2.0 %	244
Bulgaria	8.9 %	35.4 %	34.2 %	11.4 %	1.3 %	8.9 %		79
Ceská Republika	58.5 %	25.4 %	10.0 %	3.8 %	1.5 %	0.8 %		130
Danmark	26.0 %	20.0 %	34.0 %	11.0 %	2.0 %	7.0 %		100
Deutschland	30.8 %	41.3 %	20.3 %	0.7 %	1.4 %	5.6 %		143
Eesti	42.4 %	45.2 %	7.6 %	1.6 %	2.0 %	1.2 %		250
Ellas	8.2 %	29.3 %	33.7 %	15.6 %	0.8 %	6.3 %	6.0 %	365
España	9.2 %	39.8 %	36.7 %	9.3 %	1.2 %	3.8 %		654
France	26.4 %	39.1 %	19.0 %	1.9 %	4.7 %	6.1 %	2.9 %	806
Ireland	27.9 %	40.3 %	13.4 %	11.0 %	3.5 %	3.9 %		688
Italia	12.4 %	46.0 %	31.1 %	7.1 %	1.6 %	1.8 %		607
Luxembourg	53.6 %	43.5 %	2.9 %					69
Magyarország	41.3 %	41.8 %	8.8 %	4.8 %	2.2 %	1.0 %		600
Nederland	43.4 %	36.8 %	6.6 %	6.7 %	4.0 %	2.4 %		993
Norway	13.8 %	41.3 %	19.0 %	11.9 %	5.2 %	8.9 %		538
Österreich	9.9 %	29.8 %	37.4 %	15.3 %	1.5 %	4.6 %	1.5 %	131
Polska	19.2 %	39.4 %	21.2 %	5.8 %	6.7 %	7.7 %		104
Portugal	13.6 %	42.8 %	26.7 %	7.1 %	3.6 %	6.1 %		603
Slovenija	2.9 %	35.6 %		56.7 %	1.0 %	3.8 %		104
Slovensko	26.3 %	39.4 %	19.2 %	8.1 %	2.0 %	5.1 %		99
Suomi/Finland	8.9 %	25.7 %	55.4 %	7.9 %		2.0 %		101
Sverige	7.8 %	10.7 %	69.9 %	8.7 %		2.9 %		103
United Kingdom	29.0 %	41.7 %	9.8 %	12.0 %	4.2 %	3.3 %		569
Latvia	20.0 %	41.0 %	27.6 %	3.8 %	2.9 %	4.8 %		105
<b>EU 27 + NO</b>	<b>25.5 %</b>	<b>38.6 %</b>	<b>19.9 %</b>	<b>8.4 %</b>	<b>3.0 %</b>	<b>4.1 %</b>		<b>8 185</b>



