



**MINISTÈRE
DE L'AGRICULTURE
ET DE LA SOUVERAINETÉ
ALIMENTAIRE**

*Liberté
Égalité
Fraternité*

HIGHLY PATHOGENIC AVIAN INFLUENZA

SITUATION IN FRANCE

- **HPAI situation as of 24th May 2023**
- **Prevention and Control measures**

HPAI outbreaks in poultry

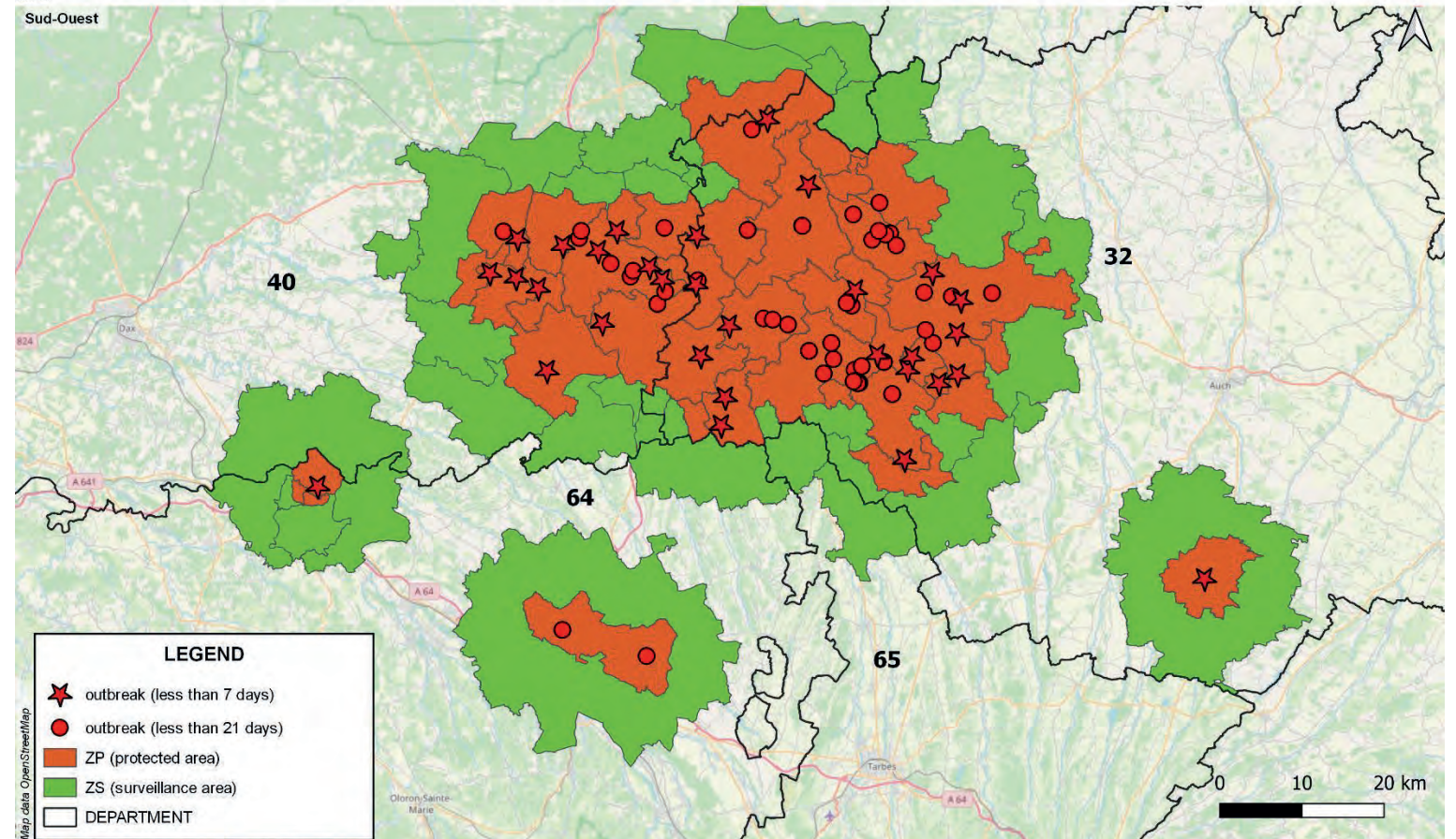
**TOTAL in South-West, since
4th May 2023 : 75**

▪ **South West region :**

Regions/Departments	Outbreak (poultry)
Nouvelle-Aquitaine	24
40 , Landes	21
64 , Pyrénées-Atlantiques	3
Occitanie	51
32 , Gers	51
Total	75

Location of HPAI outbreaks in the South West region

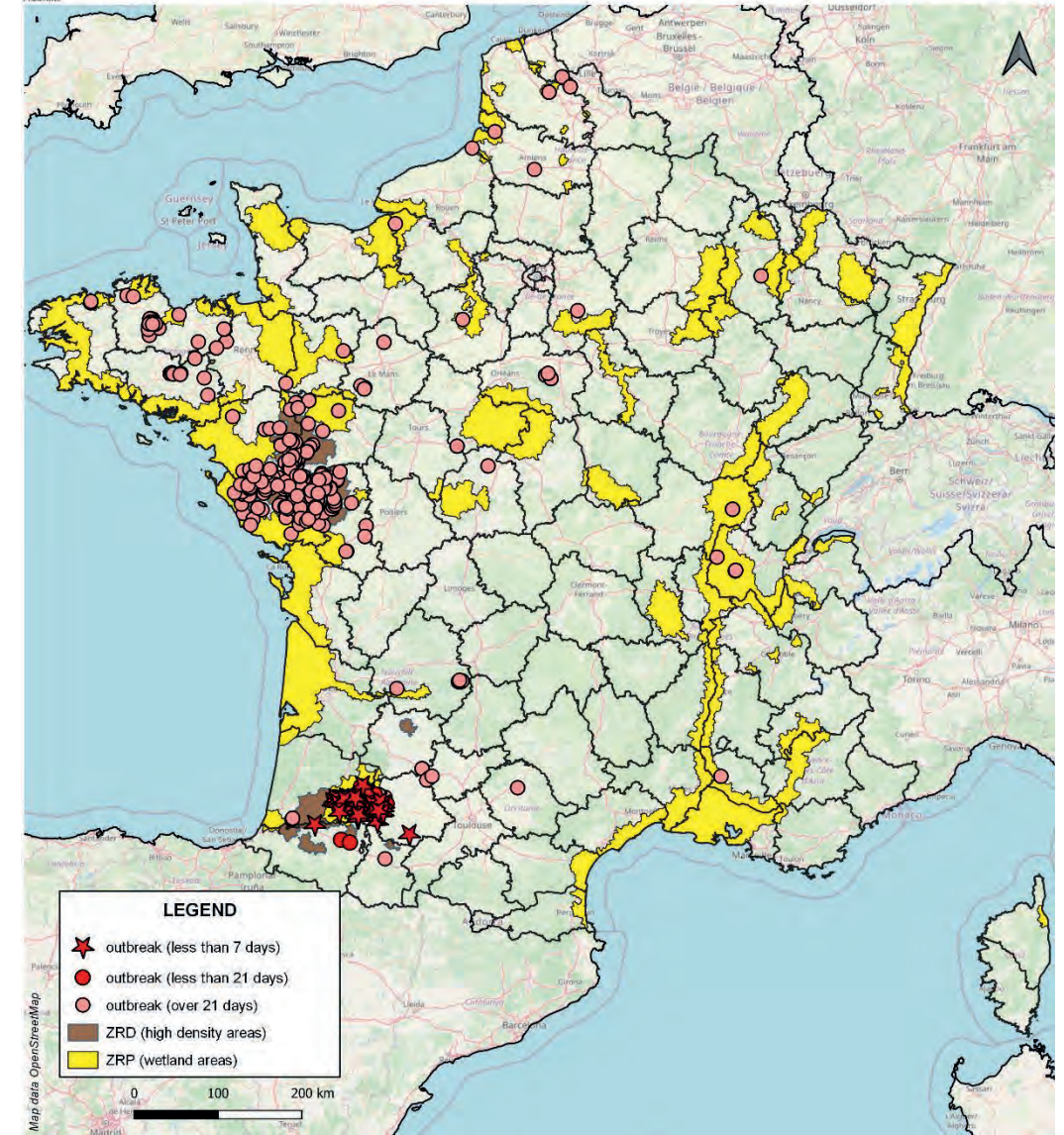
from 04-05-2023 to 24-05-2023



HPAI outbreaks in poultry

TOTAL in France, since 1 August 2022 : 390

Regions/Departments	Outbreak (poultry)		
Auvergne-Rhône-Alpes	4	Normandie	3
1, Ain	3	50, Manche	1
7, Ardèche		76, Seine-Maritime	1
69, Rhône	1	61, Orne	
43, Haute-Loire		14, Calvados	
74, Haute-Savoie		27, Eure	1
Bretagne	40	Nouvelle-Aquitaine	70
22, Côtes-d'Armor	27	17, Charente-Maritime	
29, Finistère	2	33, Gironde	
35, Ille-et-Vilaine	3	24, Dordogne	8
56, Morbihan	8	79, Deux-Sèvres	35
Centre-Val de Loire	6	64, Pyrénées-Atlantiques	3
36, Indre	1	40, Landes	24
37, Indre-et-Loire	1	23, Creuse	
41, Loir-et-Cher		Occitanie	68
45, Loiret	3	46, Lot	
28, Eure-et-Loir	1	30, Gard	
Grand Est	1	65, Hautes-Pyrénées	1
55, Meuse	1	34, Hérault	
68, Haut-Rhin		11, Aude	
Hauts-de-France	6	81, Tarn	1
2, Aisne		32, Gers	64
60, Oise		9, Ariège	
62, Pas-de-Calais	1	82, Tarn-et-Garonne	2
80, Somme	3	Pays de la Loire	188
59, Nord	2	44, Loire-Atlantique	18
Île-de-France	1	49, Maine-et-Loire	44
77, Seine-et-Marne	1	72, Sarthe	4
78, Yvelines		85, Vendée	120
91, Essonne		53, Mayenne	2
La Réunion	1	Bourgogne-Franche-Comté	1
974, La Réunion	1	71, Saône-et-Loire	1
		21, Côte-d'Or	
		Provence-Alpes-Côte d'Azur	1
		84, Vaucluse	1
		13, Bouches-du-Rhône	
		Total général	390



Weekly evolution of the number of HPAI outbreaks in poultry

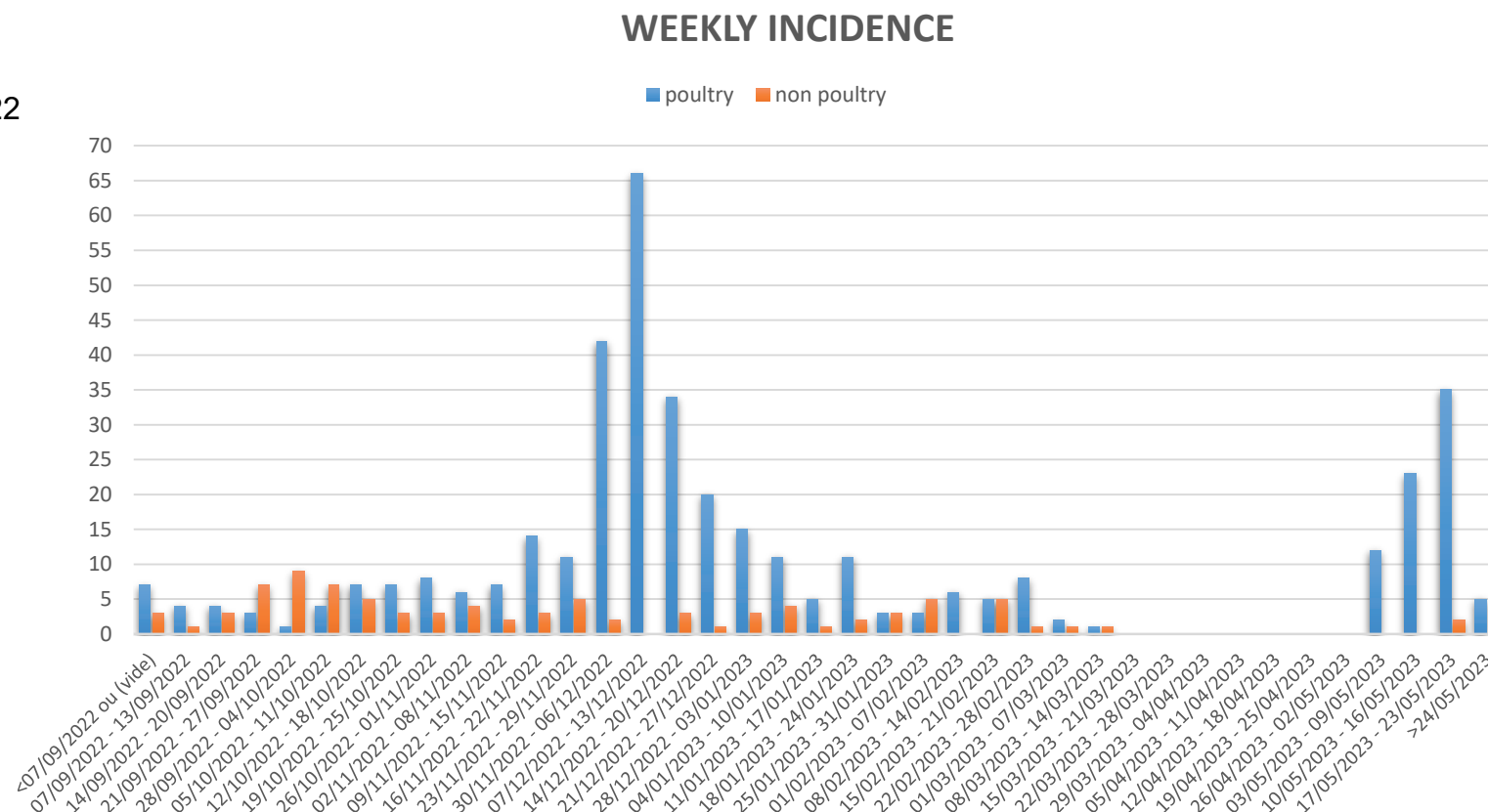
- **Phase 1** : From September 2022 to Mid-November 2022
 - Many primary introductions from wildlife
 - Split distribution throughout France
 - High proportion of captive birds affected

- **Phase 2** : From Mid November to end of December 2022
 - Primary Introductions and inter-farm diffusion
 - Concentrated mainly in the Great West
 - Mainly affected poultry farms

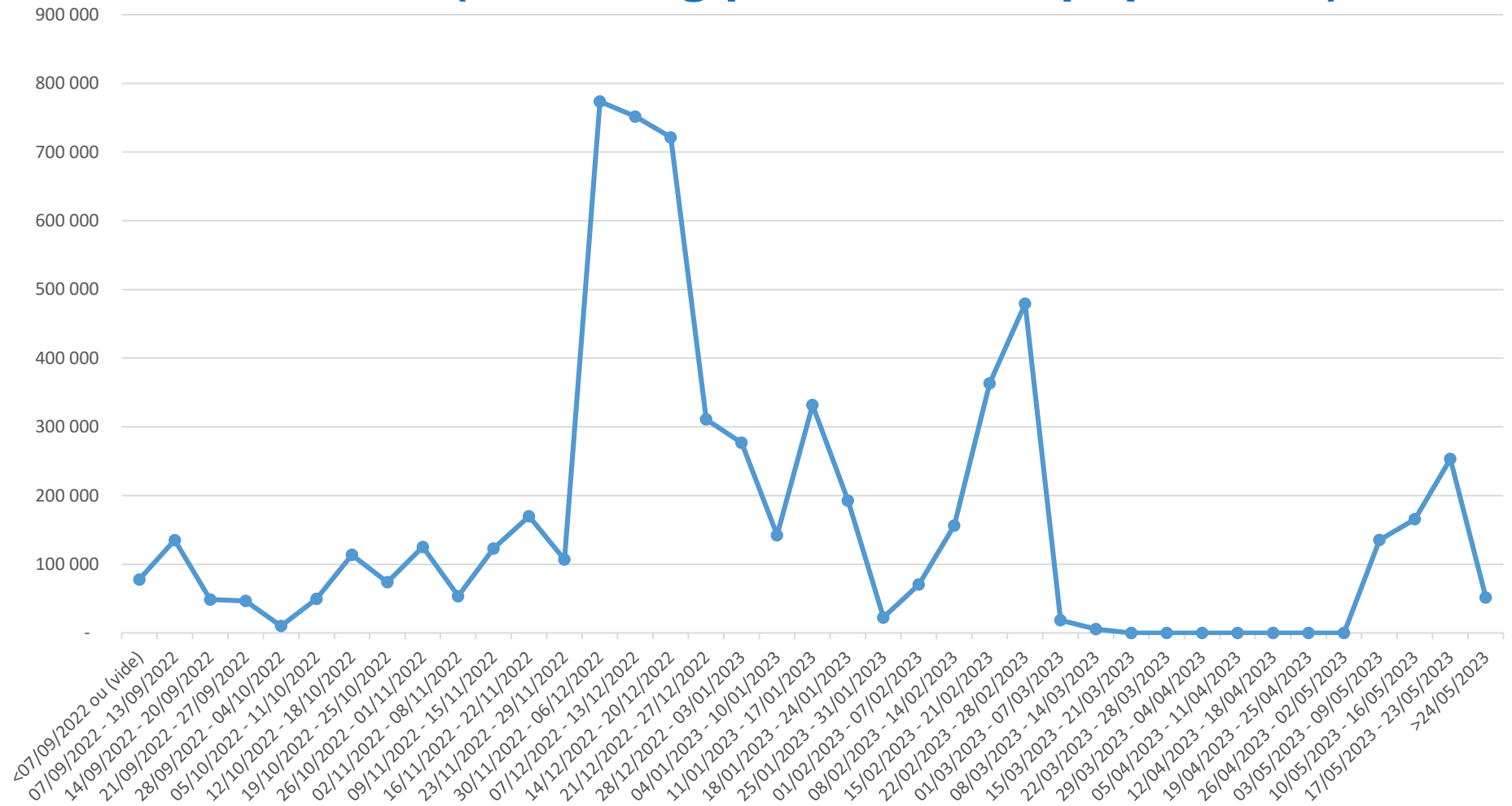
- **Phase 3** : From end of December to mid-March
 - Incidence decreases
 - Primary introductions
 - Cluster in Côtes d'Armor department

- **Phase 4** : From mid-March to beginning of May
 - Stabilization – no outbreaks except in wildlife

- **Phase 5** : From 4th May
 - Primary Introductions and inter-farm diffusion
 - Concentrated mainly in the South West
 - Mainly affected poultry farms

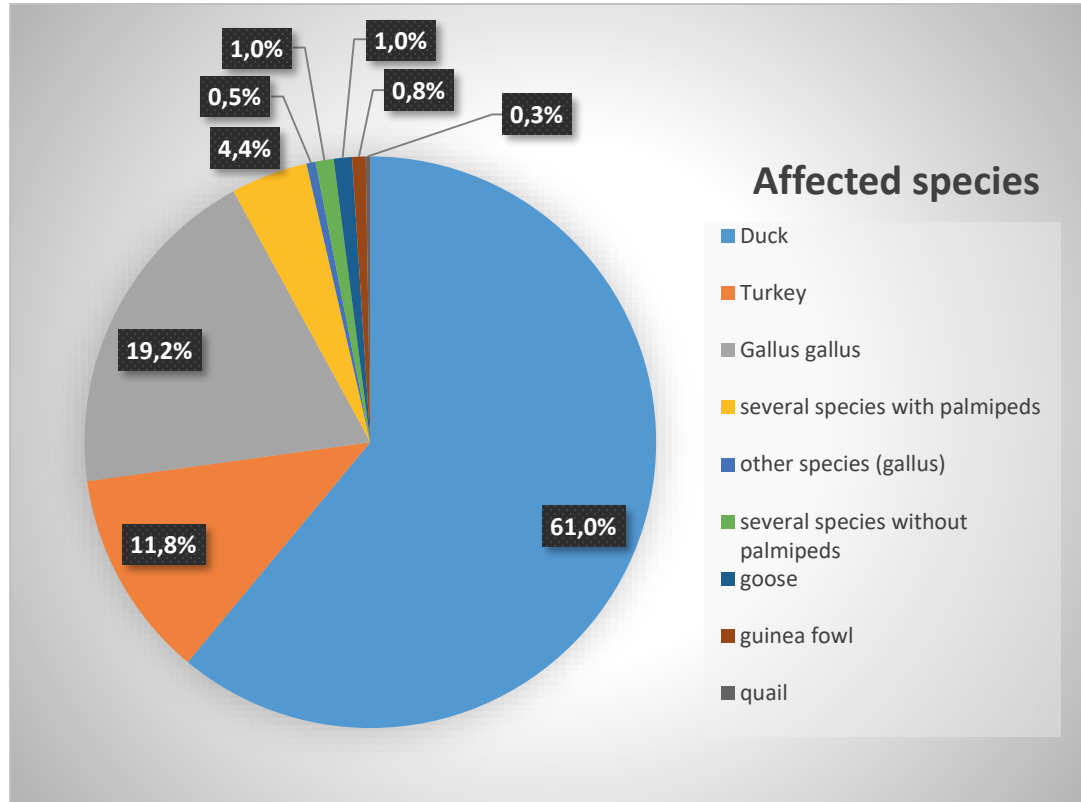


Weekly evolution of the number of killed poultry in the outbreaks (excluding preventive depopulation)



Total : 6 359 809

Affected species

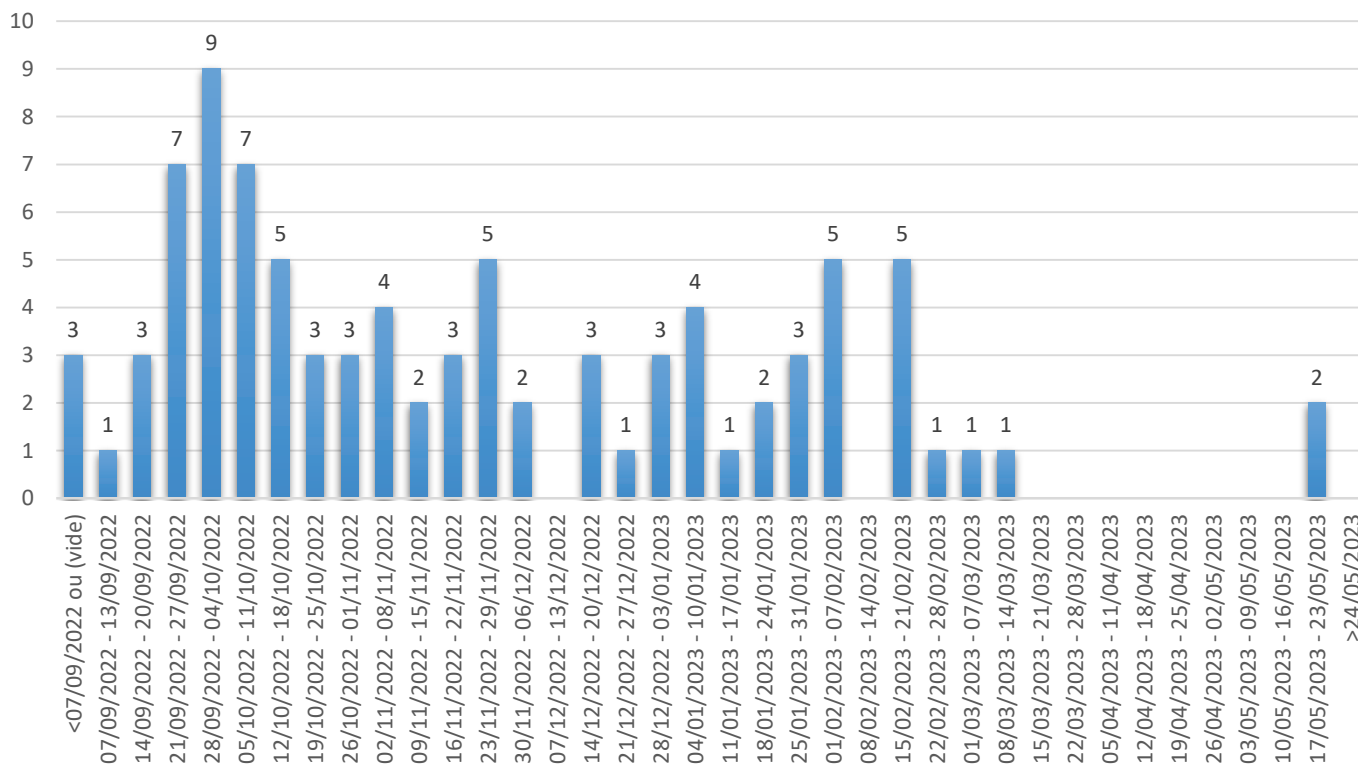


Affected species	Outbreaks
Duck	238
Turkey	46
Gallus gallus	75
several species with palmipeds	17
other species (gallus)	2
several species without palmipeds	4
goose	4
guinea fowl	3
quail	1
Total général	390

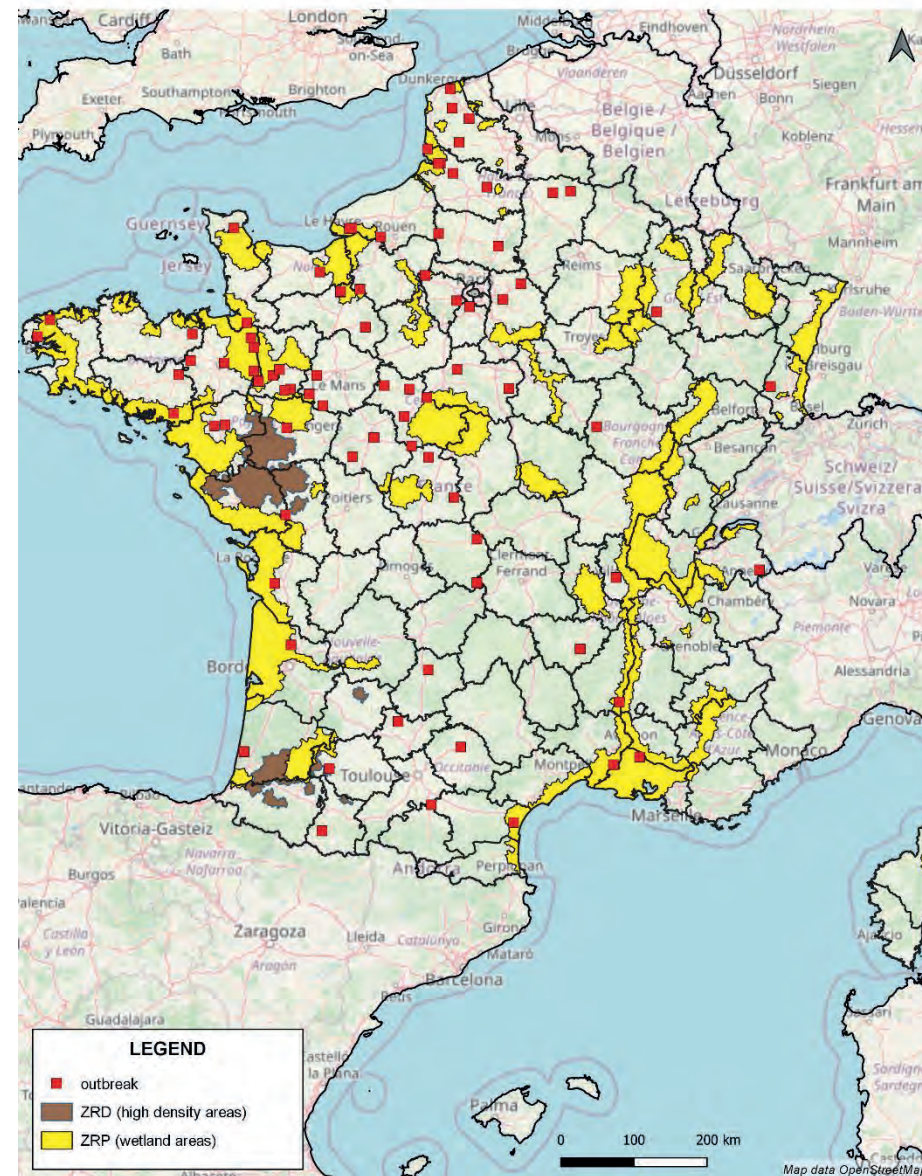
HPAI in captive birds

89 outbreaks, since 1 August 2022

WEEKLY INCIDENCE



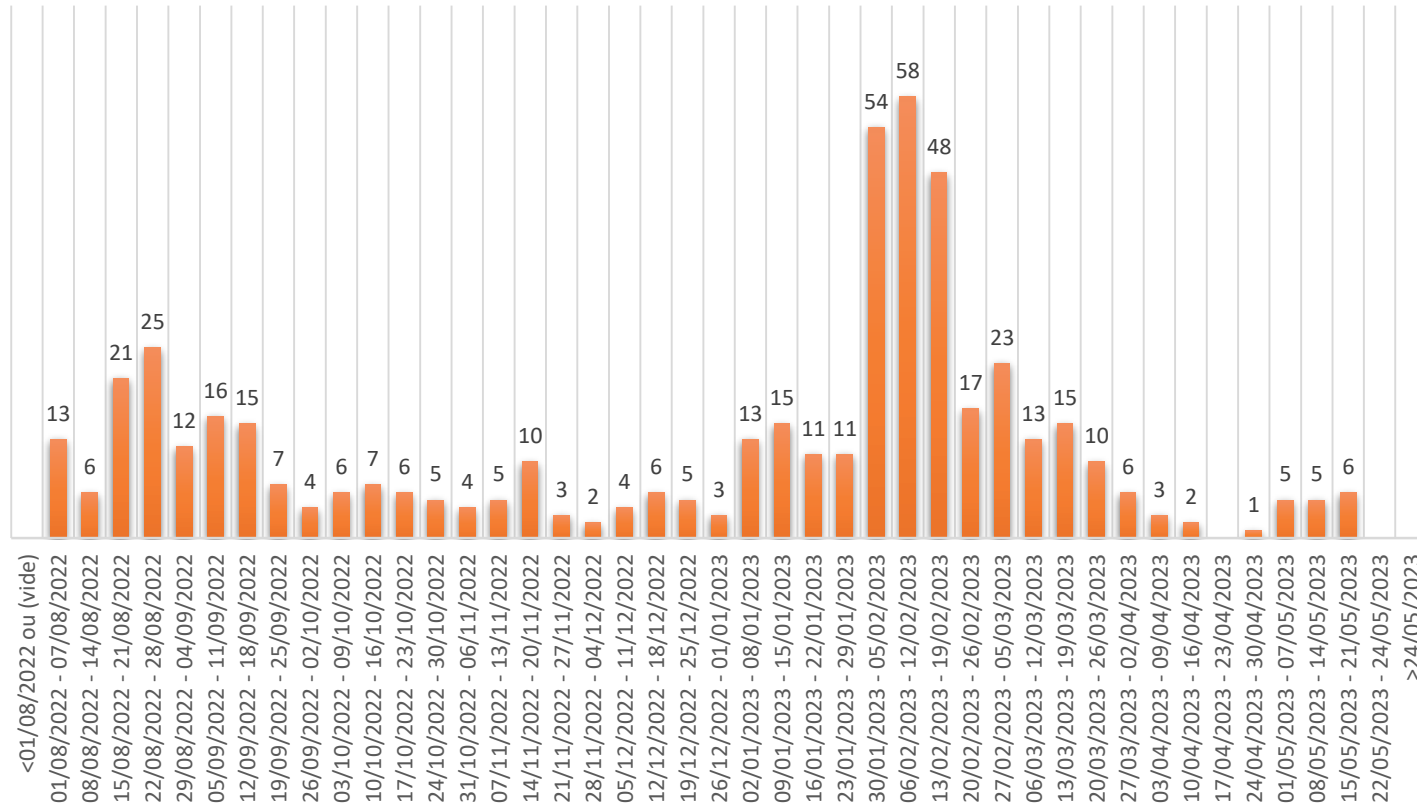
24/05/2023



HPAI cases in wildlife

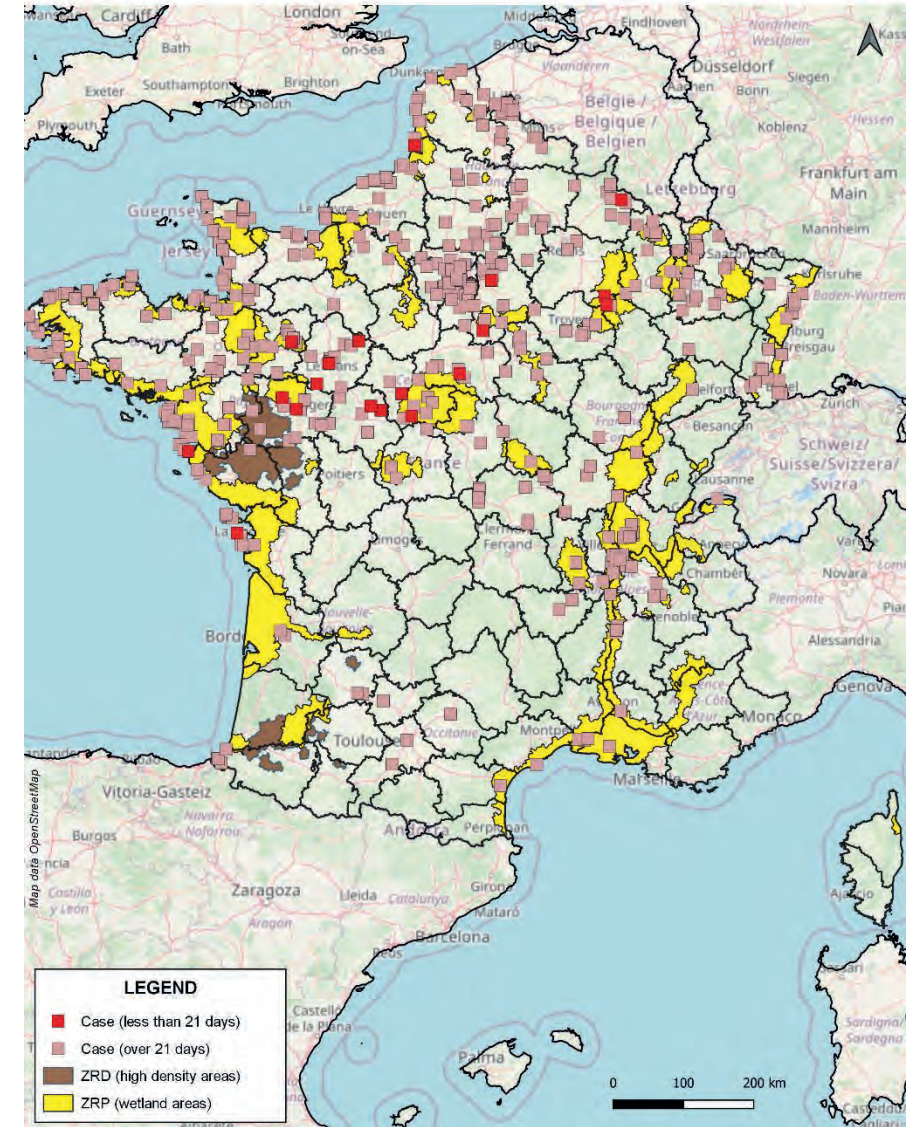
501 cases since 1 August 2022

WEEKLY INCIDENCE



Location of HPAI cases in wildlife since 1st of August 2022

24/05/2023



Prevention measures across the country

- **Early warning system**
 - Daily surveillance in farms with consideration of alert criteria
- **Sheltering of poultry in risk areas**
 - Risk areas are wetland areas (ZRPs) and areas with high poultry density (ZRDs)
 - All species of poultry in ZRPs ; palmipeds in ZRDs
- **Restriction on hunting activities in risk areas**
- **Prohibition of bird gathering in risk areas**

Control measures in departments 32, 40, 47, 64 and 65

- **New outbreaks in departments 32, 40 and 64 early May**
- **Reinforced control measures to limit the spread of the disease**
- **Restricted zones extended to 20 km:**
 - Around poultry outbreaks :
 - Protection zone 3 km
 - Surveillance zone 10 km
 - Further restricted zone 20 km
 - Cases confirmed in wildlife :
 - Infected area 20 km

Control measures in departments 32, 40, 47, 64 and 65

- **Additional measures in restricted areas to complement measures prescribed by Regulation (EU) 2020/687 :**
 - Active surveillance is reinforced in palmipeds farms :
 - Compulsory autocontrols on dead animals and in the environment on a biweekly basis
 - 24-hour pre-movement autocontrols of poultry
 - Peri-focal preventive depopulation over a radius of 10 km :
 - 1 km around an outbreak : all susceptible species
 - 1 to 10 km around an outbreak : palmipeds

Thank you for your attention

