



**National Sanitary Veterinary and Food  
Safety Authority**



**Implementation in Romania of  
the 2014 co-financed programme  
for control and monitoring of  
Classical Swine Fever**

*PAFF Committee, 7 – 8 October 2015  
Brussels*

# Content

- ❑ **Description**
- ❑ **General Objectives**
- ❑ **Evolution 2014**
- ❑ **Synthesis**
- ❑ **Conclusion**

# General Objectives (1)

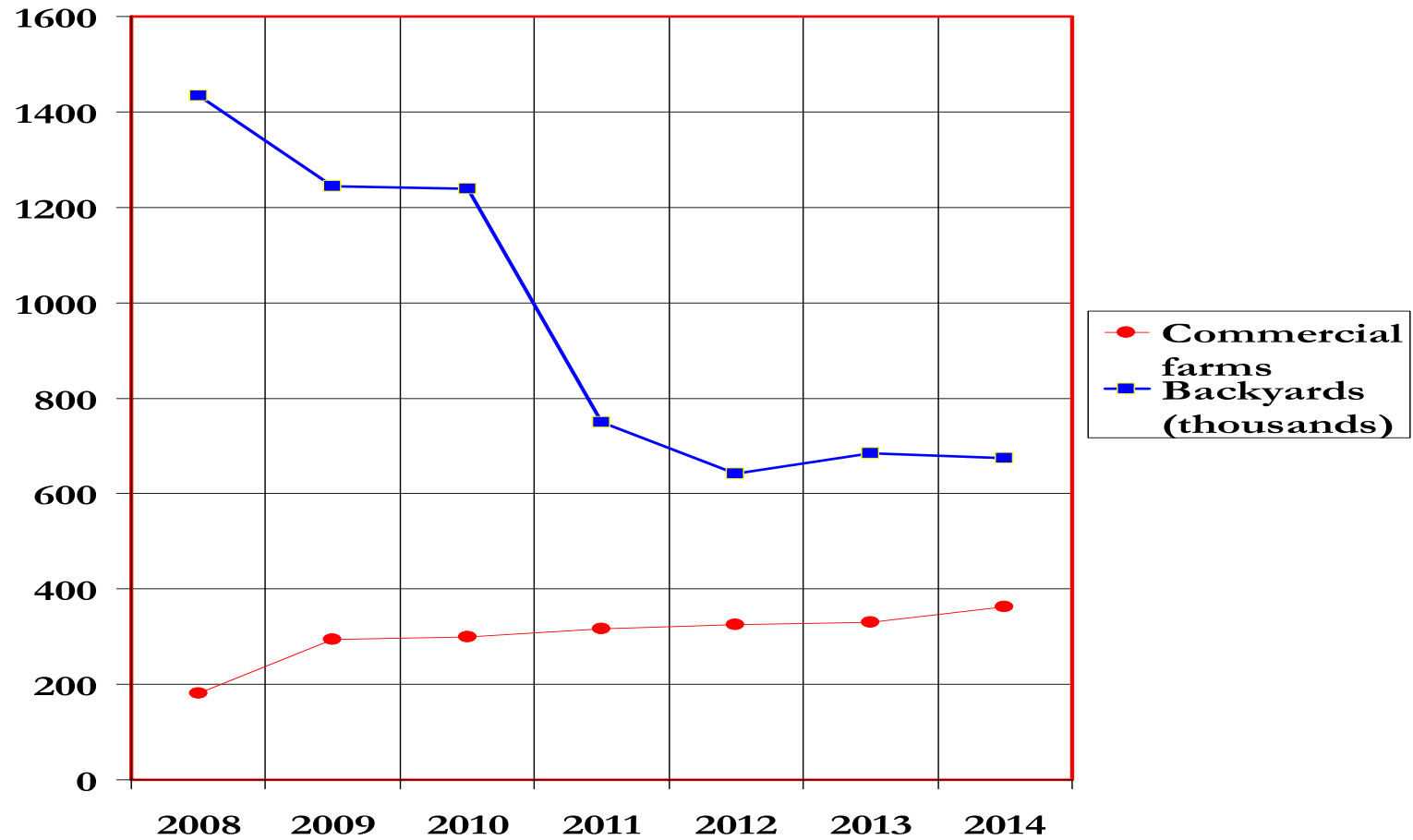
- surveillance of the health status of domestic and wild pig population
- demonstrate the absence of the CSF virus circulation
- demonstrate freedom of CSF

# Implementation of the programme

- Target population – entire domestic and wild pig population of the country
- Methods -Active and passive surveillance
  - by clinical inspections, serology and virology surveillance

# Pig population dynamic and distribution (1)

## Dynamic of the pig holdings 2008-2014

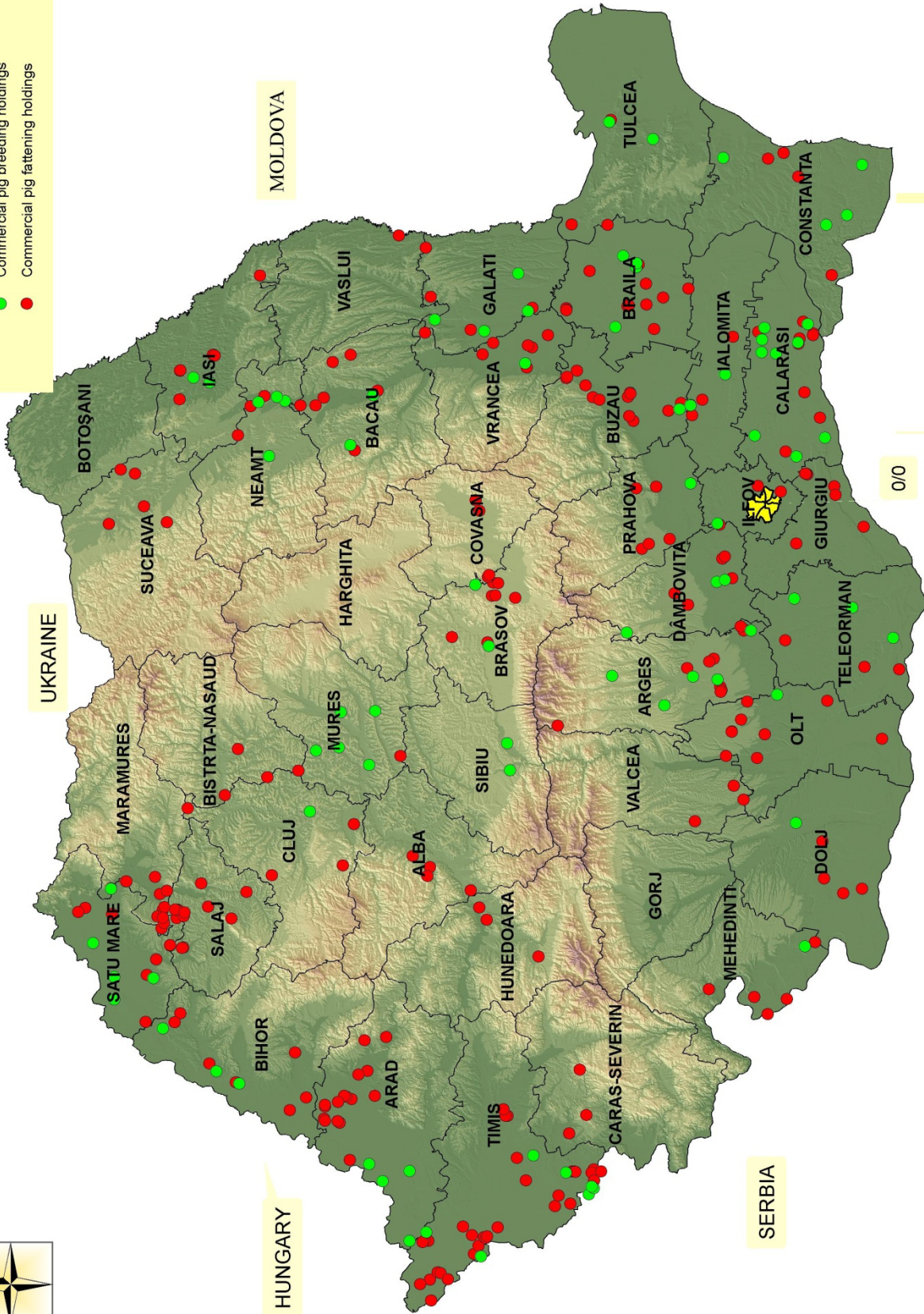




# ROMANIA

## Commercial pig holdings Romania 2014

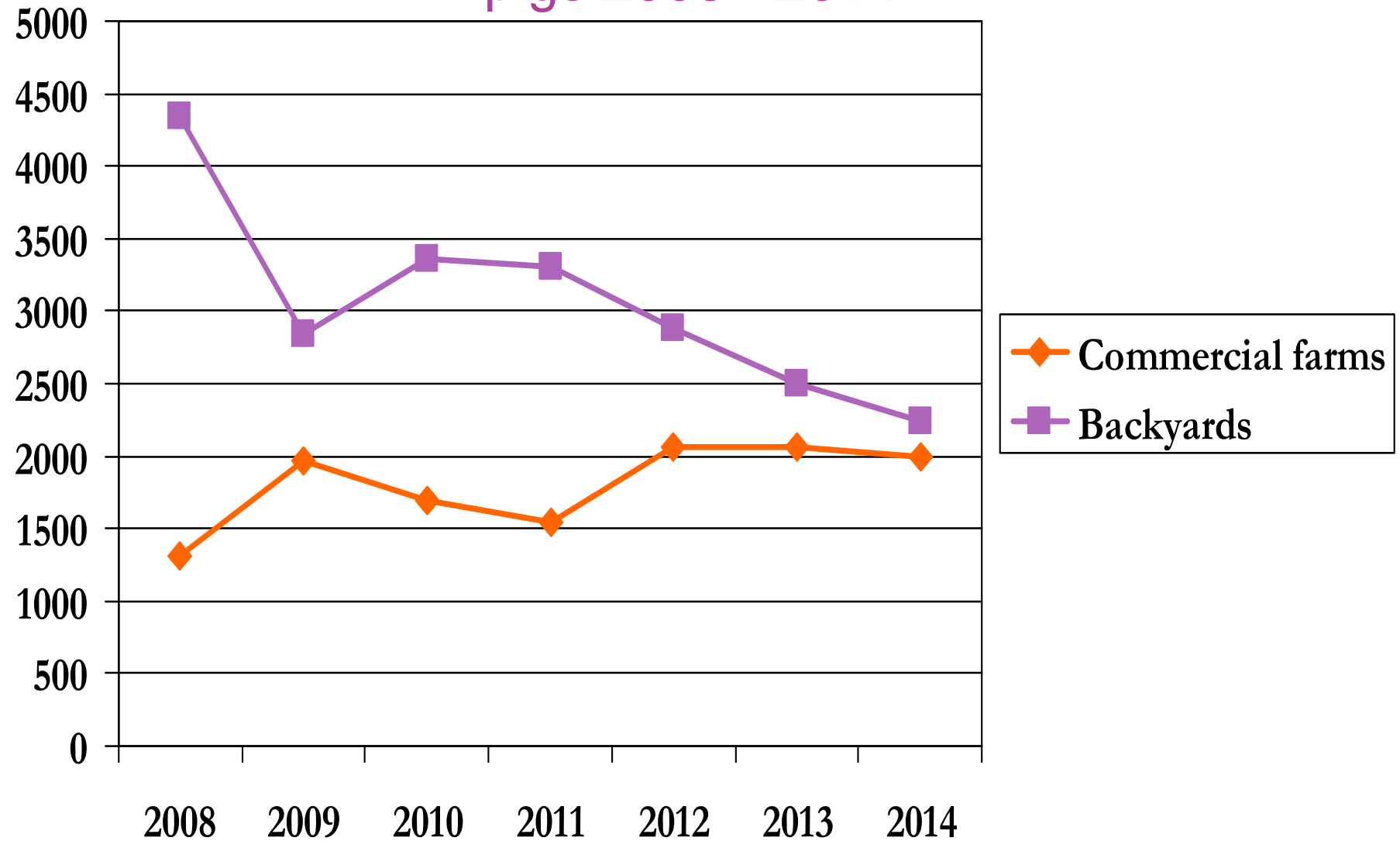
- Commercial pig breeding holdings
- Commercial pig fattening holdings



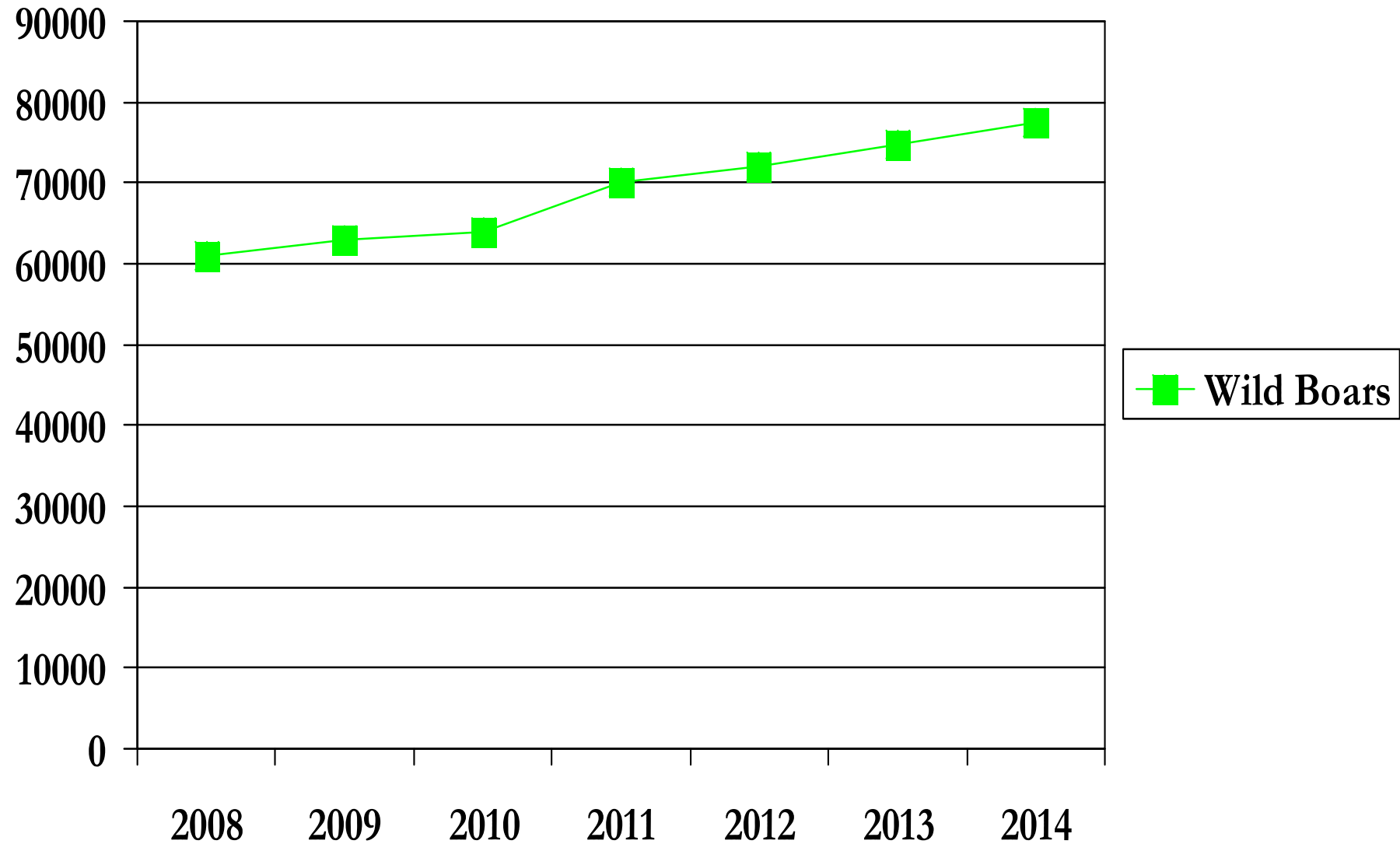
95,000 47,500 0 95,000 Meters

0/0

## Pig population dynamic and distribution (2) Evolution of the number (thousands) of domestic pigs 2008 - 2014



# Evolution of Wild Boars population 2008-2014





# Serological Surveillance in backyard holdings 2014

## Active serological surveillance

- **First campaign:** February-May – blood samples from all breeding sows
- **Second campaign:** June-July - randomly sampling of locality, herds and animals taking into consideration a prevalence of 5% with 95% confidence
- **A third campaign:** November - randomly sampling of animals taking into consideration a prevalence of 0,5% with 95% confidence from each chosen locality

**Due to financial aspects the 3rd -active surveillance campaign was not performed**

## Passive surveillance

- From all aborted sow
- From ill pigs with clinical signs that can also be seen in CSF

## Virological surveillance in backyards holdings 2014

RT- PCR on

- organs from dead pigs with lesion that can be seen also in CSF
- blood from aborted sow
- blood from ill pig with clinical sign that can be seen also in CSF
- avortons

# Serological surveillance in commercial farms 2014

## **Active surveillance**

- randomly sampling of fattening pigs, with a prevalence of 5% and 95% confidence in June-July

## **Passive surveillance**

- From all aborted sow
- From all ill pigs with clinical signs that can be seen also in CSF

# Virological surveillance in Commercial Farms 2014

RT- PCR on

- organs from dead pigs with lesion that can be seen also in CSF
- organs from dead pigs when the dead pigs is above technological mortality
- blood from aborted sow
- blood from ill pig with clinical signs that can be seen also in CSF
- avortons

# Surveillance in wild boars

- serological surveillance using ELISA on all hunted wild boars born after the date of last vaccination campaign
- virological surveillance using RT-PCR and FAT of all hunted and found dead wild boar

**Active surveillance**  
222.425 animals tested by ELISA

<b>Campaign</b>	<b>Commercial holdings (no of tested animals)</b>	<b>Backyard Holdings (no of tested animals)</b>
<b>February - May</b>		<b>71048 sows</b>
<b>June - July</b>	<b>32.843 fattening pigs</b>	<b>118.534 fattening pigs</b>
<b>TOTAL</b>	<b>32.843</b>	<b>189.582</b>

# Passive surveillance backyards holdings 2014

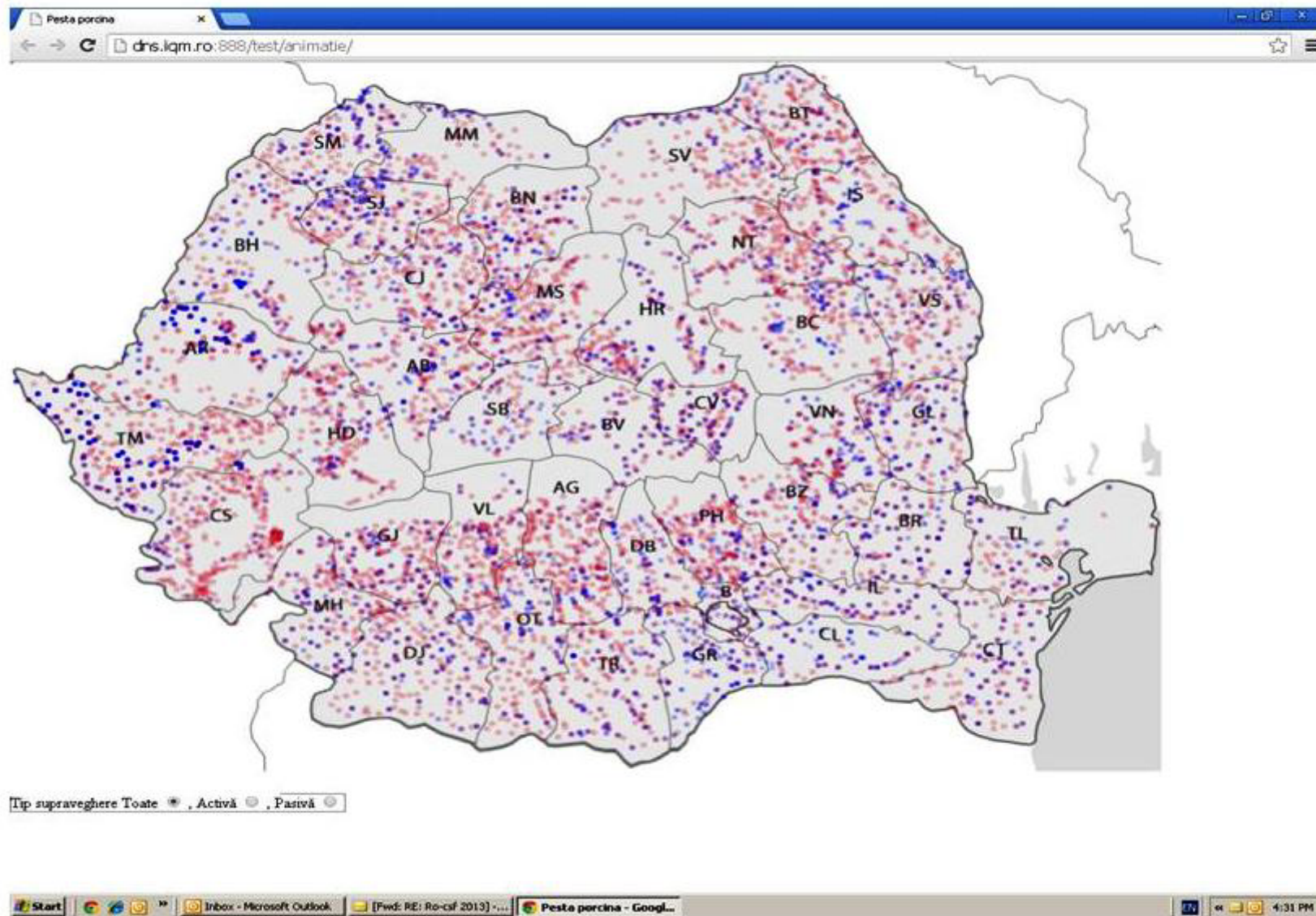
Year	Animals	Samples	ELISA		PCR		FAT
			Serum	Blood EDTA	Org	Fetus	Sternum
2014	7757	7867	944	4753	2136	30	4

## Passive surveillance commercial holdings 2014 at December 31

Year	Animals tested				Tests	
	Sows	Sick	Dead	Fetus	ELISA	PCR
2014	960	2702	2718	79	1081	6364



# Map of domestic active and pasive surveillance



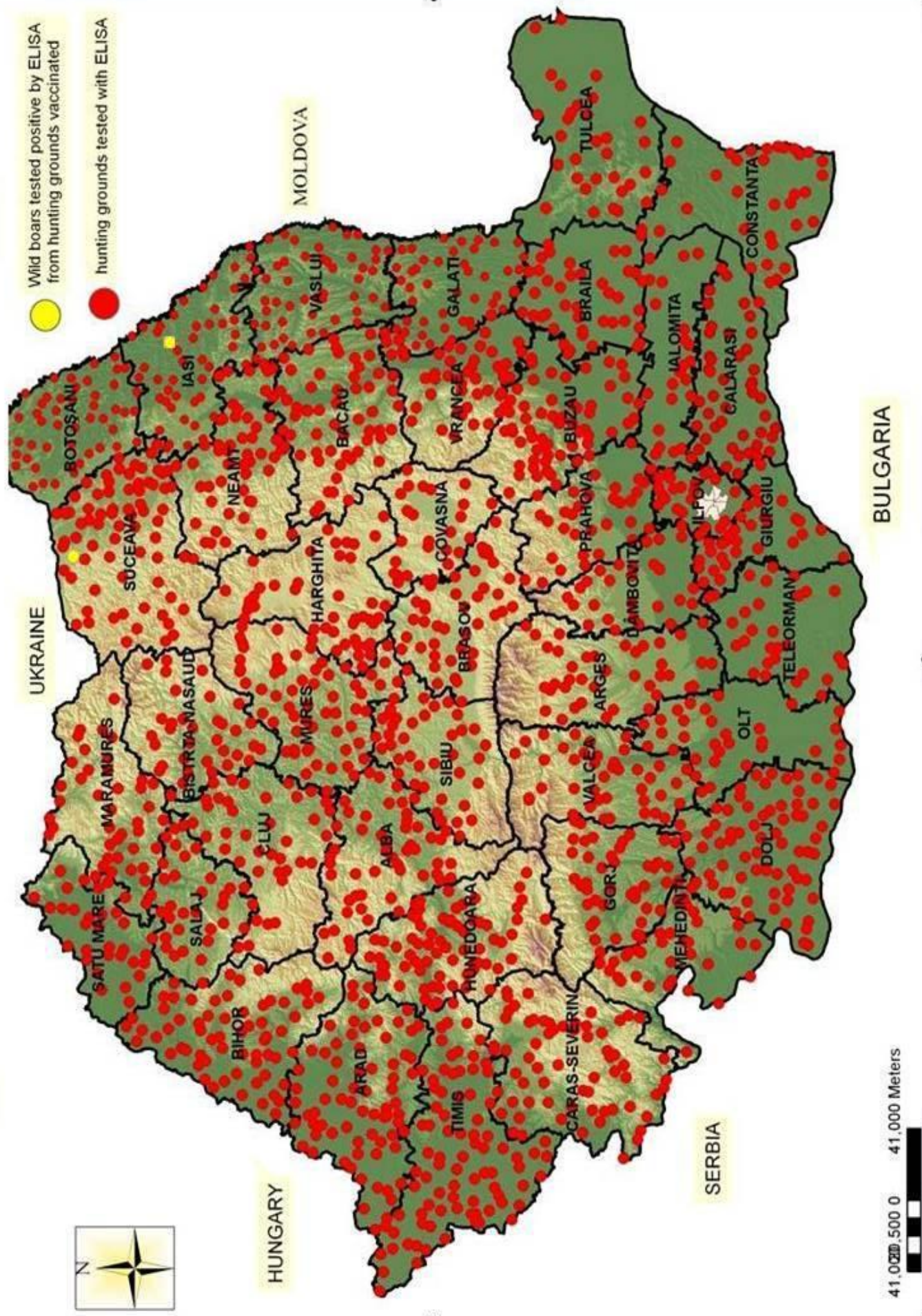
# Wild boars surveillance

Wild boars	Animals tested in 2014	Elisa			FAT			RT-PCR		
		Sample	P	N	Sample	P	N	Sample	P	N
<b>TOTAL</b>	<b>16773</b>	<b>14259</b>	<b>6*</b>	<b>14253</b>	<b>16521</b>	<b>0</b>	<b>16521</b>	<b>8135</b>	<b>0</b>	<b>8135</b>

\* sampling by from old vaccinated animal

Hunting season 01.08.2014 – 28.02.2015			
Hunting bag	Hunted	Dead	Tested
28151	25750	33	17305

# Hunting grounds in wich wild boars were tested for serology in 2014



## Costs of CSF program -2014

<b>TOTAL COST Sampling</b>	<b>COST of Tests Domestic Pigs</b>	<b>COST of Tests Wild Boars</b>	<b>TOTAL COST Tests</b>	<b>TOTAL COST General</b>
<b>502,888.98 EUR</b>	<b>886,460.31 EUR</b>	<b>243,052.59 EUR</b>	<b>1,129,512.90 EUR</b>	<b>1,632,401.88 EUR</b>

1,116,219 backyards inspected in 2014 by empowered private vets for the clinical inspections of pigs  $\approx$  5 millions EUR

**Cost of inspections are not co-financed by European Commission**

# Conclusions

According with the results obtained during 2014 and so far in 2015 from the implemented surveillance programme **would make plausible to assume that it is highly unlikely that the CSF virus has circulated in the domestic and wild pig populations in Romania for at least the last 12 months.**

## Report of FVO mission DG(SANCO) 2014-7045

Overall, the report concludes that:

“The well organized and elaborate system for active surveillance in domestic pigs is auditable. Its weaknesses do not significantly affect the confidence in the status of the country for CSF in domestic pigs (where the last CSF case reported was in 2007), which is supported also by a passive surveillance system in a largely susceptible (non-vaccinated) pig population.

In wild boars, the intense active surveillance coverage and the implementation and monitoring of surveillance, give a reliable picture supporting the absence of the circulation of CSF virus in the populations investigated.”

## Final remarks

- Romania is listed in the Annex to Commission implementing Decision 2013/764/EU concerning animal health control measures relating to CSF in certain Member States (MSs).
- The last cases of CSF reported from Romania in domestic or feral pigs date back to 2007 and an intense programme of control and monitoring CSF has been in place since then with very good results.
- We consider that Commission should reconsider the restrictions of Romania in relations with CSF

**Thank you for your  
attention !**