



Highly pathogenic avian influenza in Germany

Current Situation

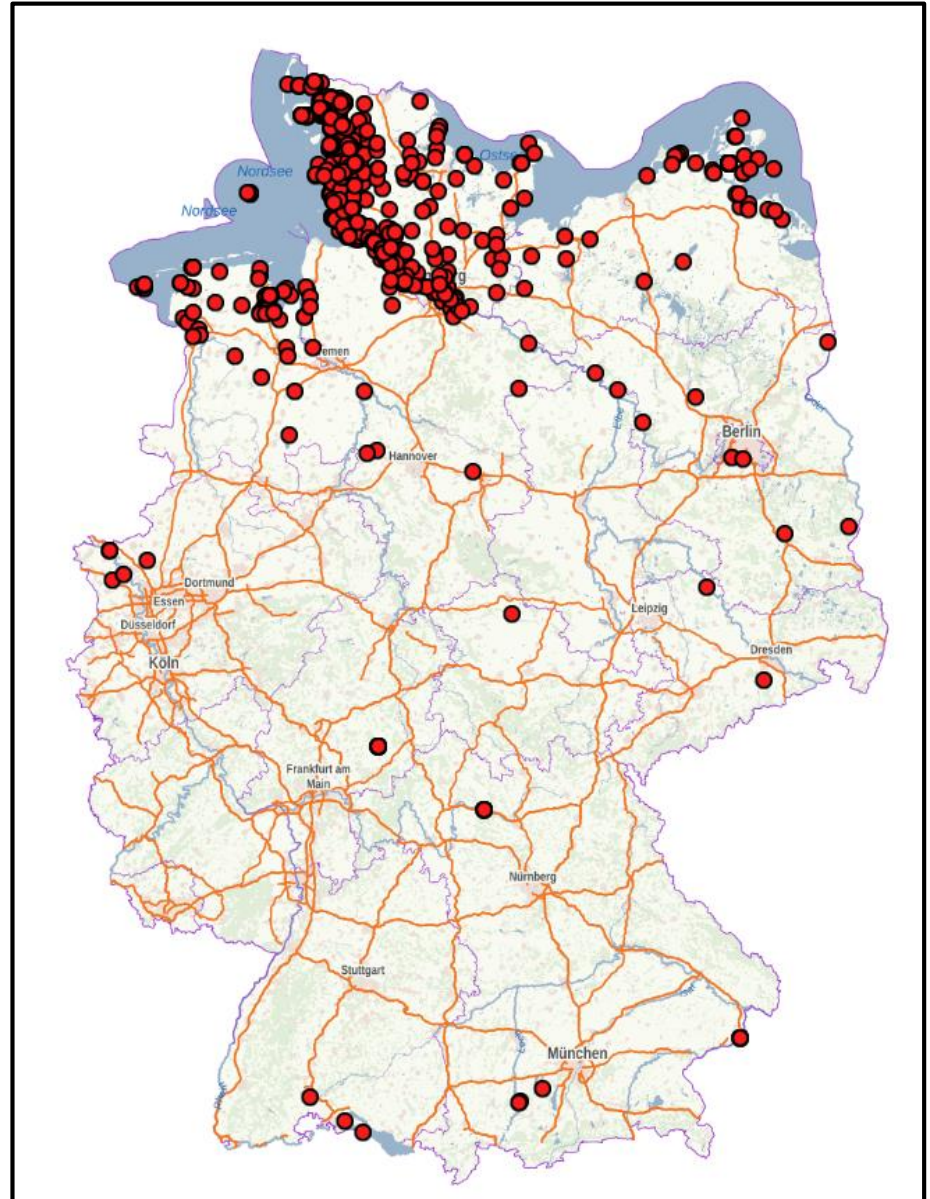
SCoPAFF-meeting on 11.02.2021

Content

1. Current situation in wild birds
2. Current situation in poultry and captive birds 'non-poultry'
3. HPAI event in Lower Saxony
4. Intra-EU movement from HPAI-surveillance zones

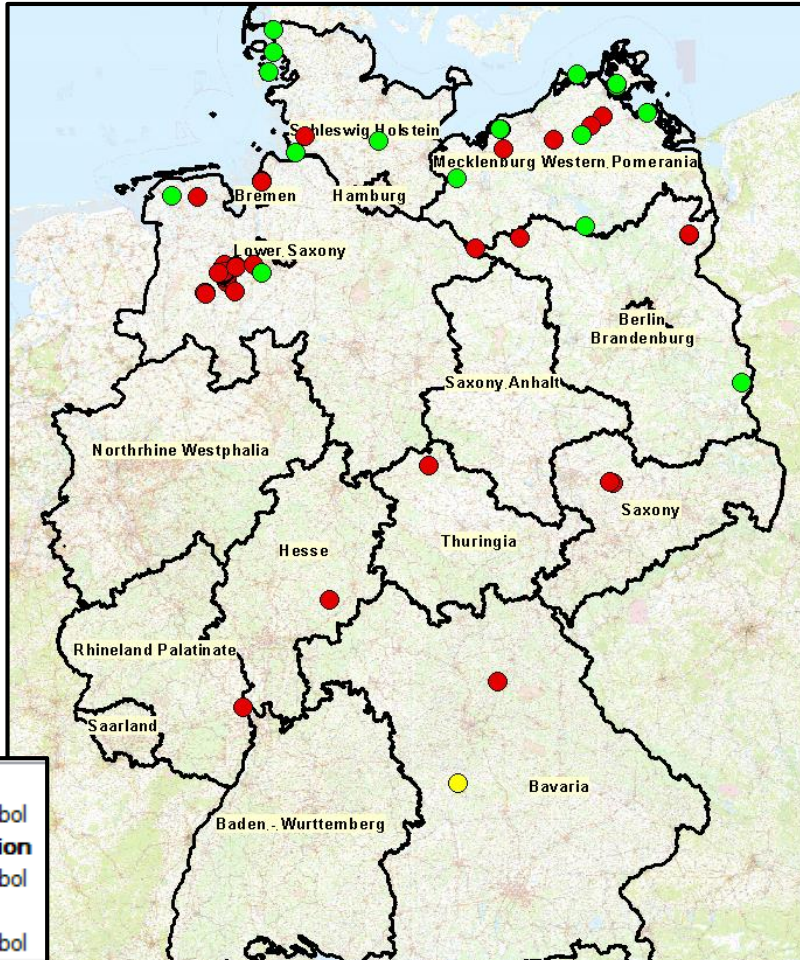
Situation in **wild** birds

- **HPAI in wild birds**
since 01.10.2020 up to
10.02.2021: 601 cases (498
cases at the PAFF in 15th JAN)
- **New serotype detected by
FLI: H5N4** (additionally to
H5N8, H5N5, H5N3 and
H5N1)

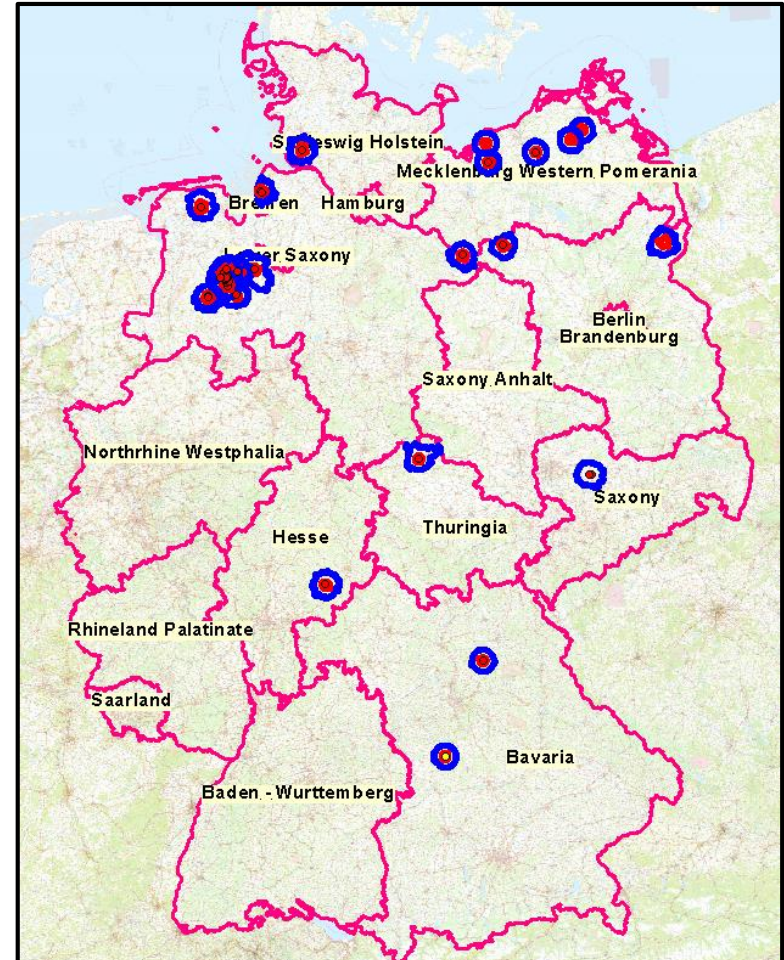


Poultry / captive birds – 10/02/2021; 10 a.m.

- **POULTRY:** total confirmed: **55** (39 last PAFF 15/01/2021); active: **39**; closed: **16**; suspicion : **1** case
- **CAPTIVE BIRDS:** total confirmed and active: **3** cases.



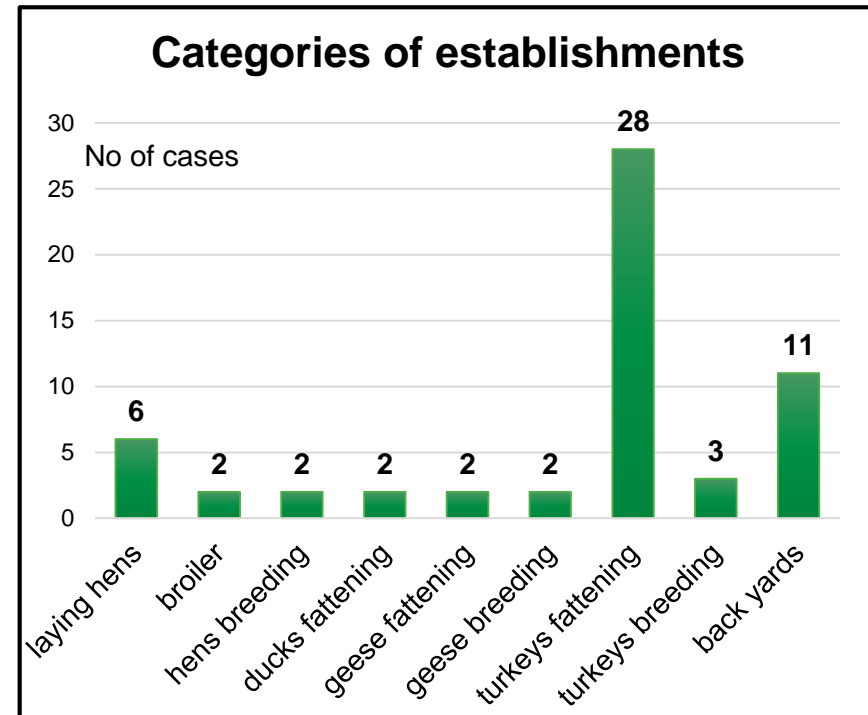
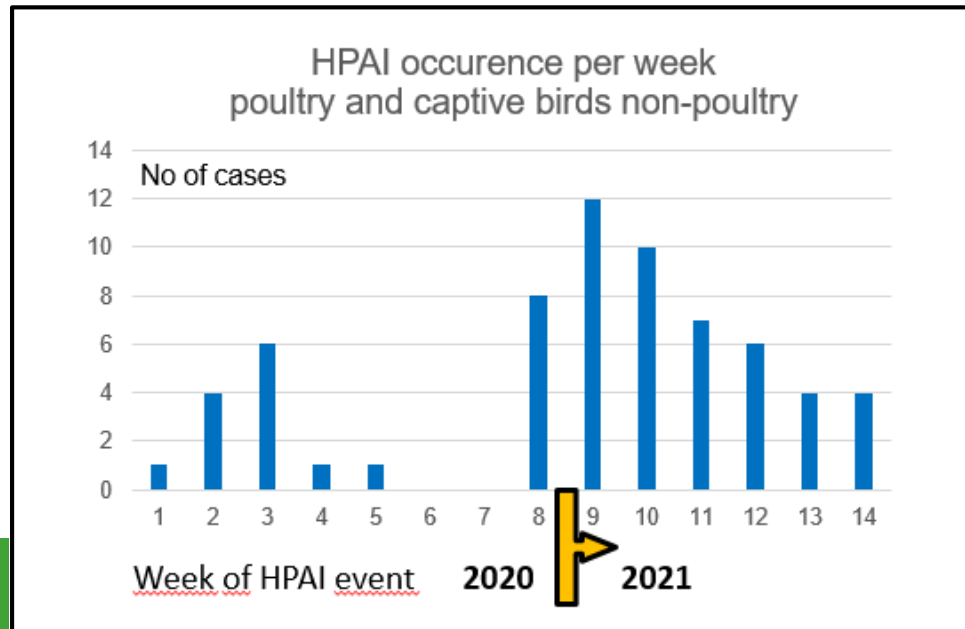
All cases – including closed cases



Current active restricted zones

Situation in captive birds/poultry

30.10.2020 – 10/02/2021



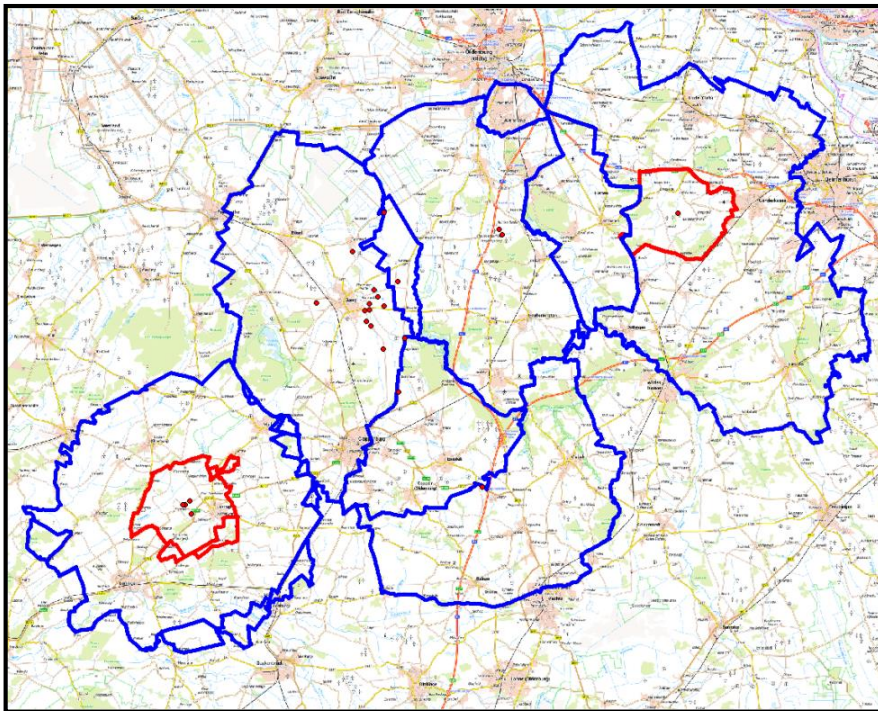
Peak around Christmas and New Year

50% of the outbreaks in establishments for fattening of turkeys

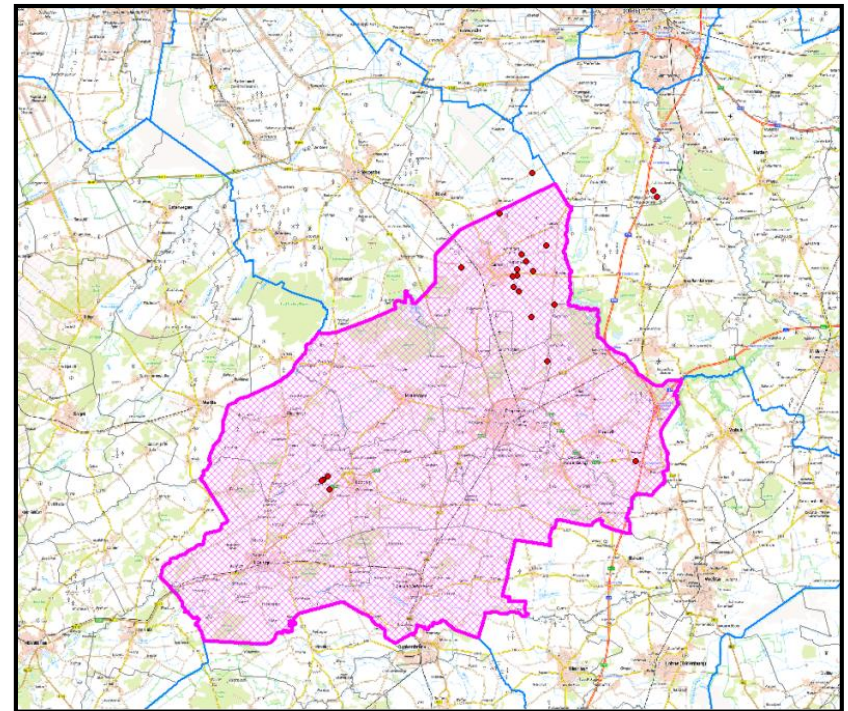
Lower Saxony:

Current situation – 11.02.2021

- No new outbreaks since 23/01/2021
- Still active cases: 26
- Prohibition of repopulation of turkey and duck establishments in force
- Support on the spot by the epidemiological team of Friedrich Loeffler Institute (FLI) - National Reference Laboratory and Research Centre



Restricted zones of the cluster



Zones where the repopulation of turkey establishments is prohibited.

Lower Saxony: Epidemiological investigations

- Visits carried out 26th – 28th January 2021 FLI epidemiological experts
- Support on the spot in the districts Cloppenburg and Oldenburg
- The assessment of the data is still on going. No final results by now.
- Six establishments have been visited (each three per district):
 - 4 for fattening of turkeys,
 - 1 for broiler,
 - 1 for breeding of broilers.
- Good biosecurity measures enforced in the establishments
- Still open question: airborne spread of the virus in particular by strong wind during culling and disposal of the flock in at least a single outbreak?

Thank you for your attention!



Bundesministerium
für Ernährung
und Landwirtschaft