

African swine fever in Lithuania

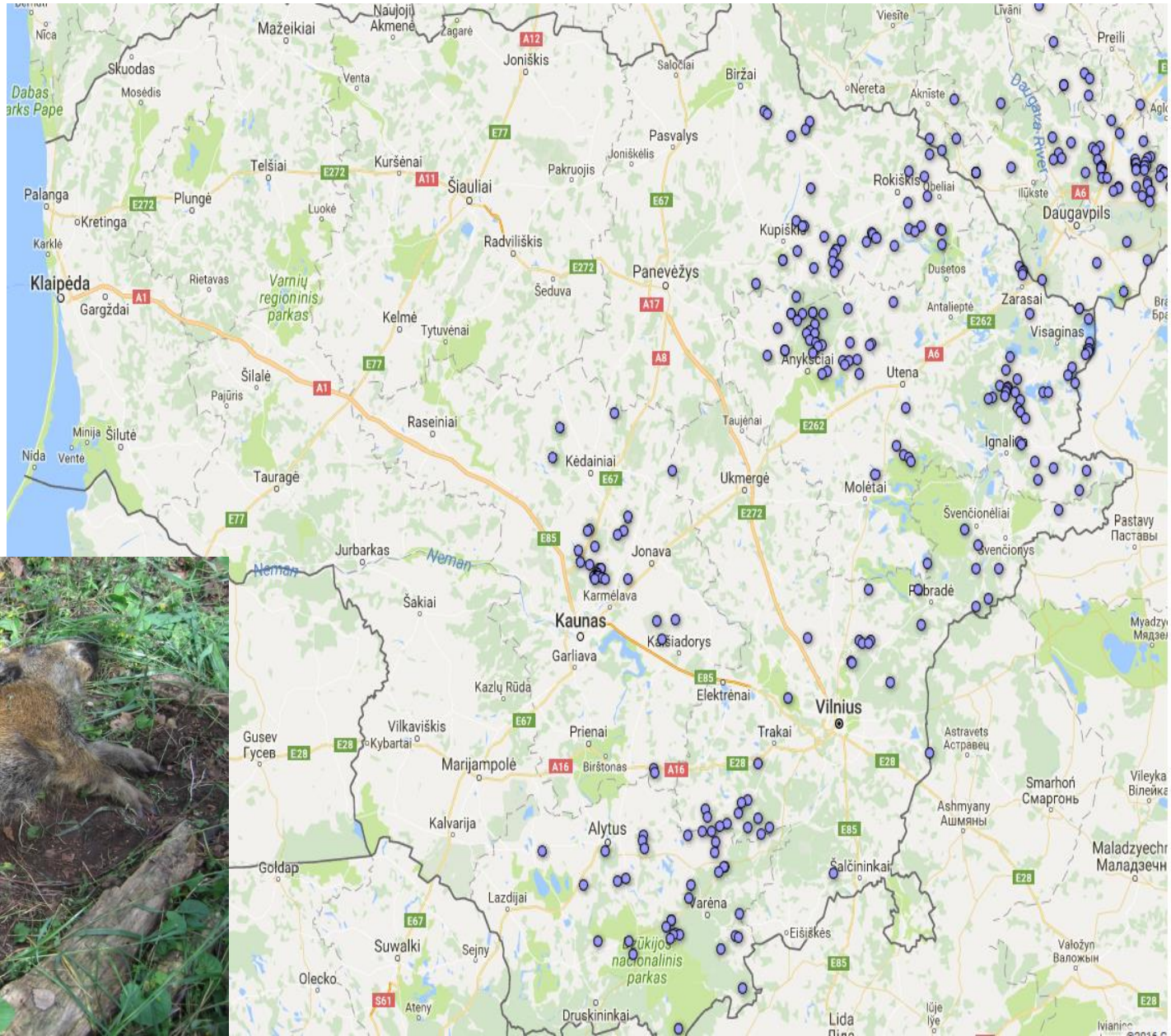


**State Food and Veterinary Service,
Lithuania**

2016-08-18

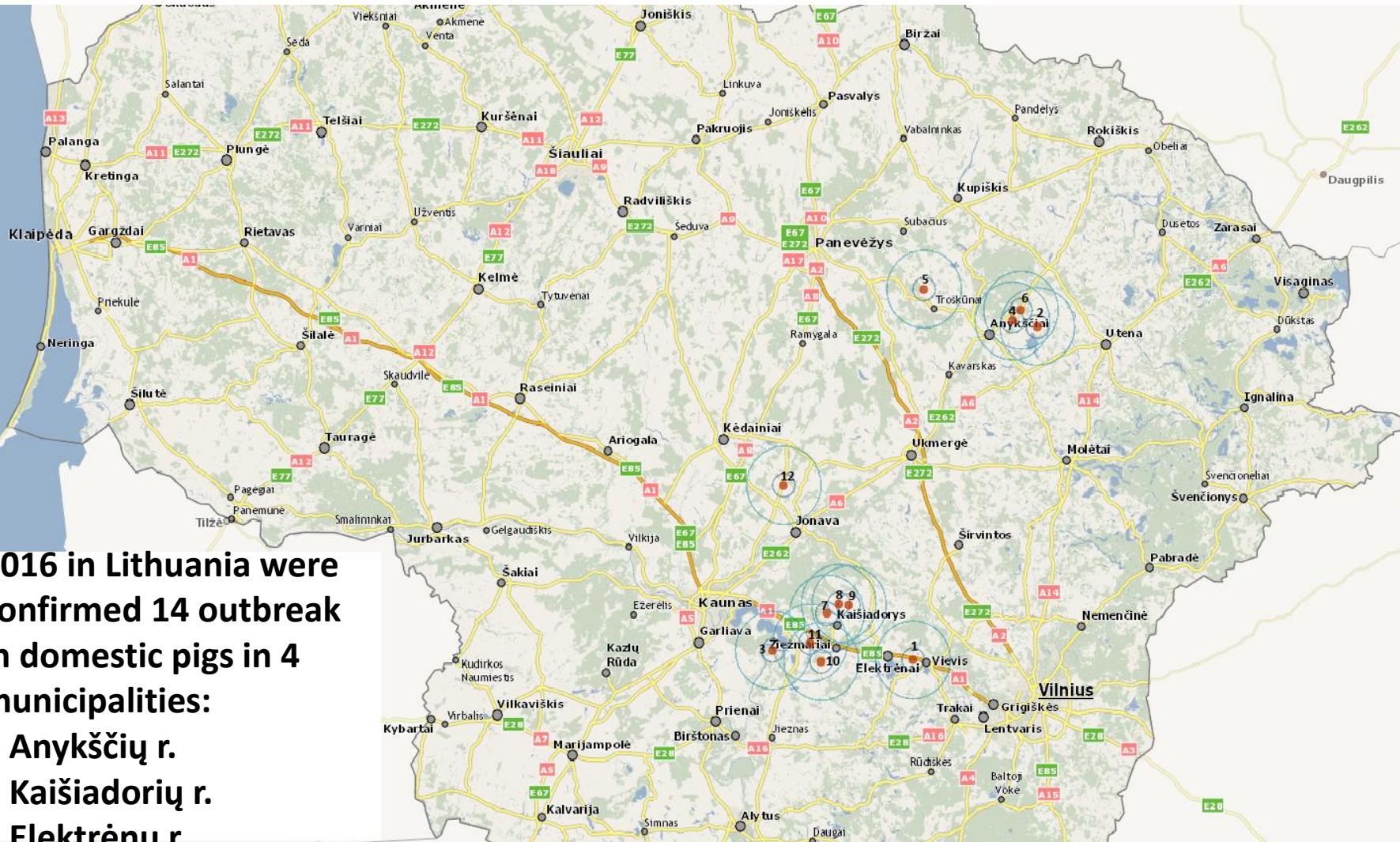
ASF cases in wild boars in 2016

184 places
-ASF was confirmed in 297 wild boars
- 39 were hunted
- 258 were found dead



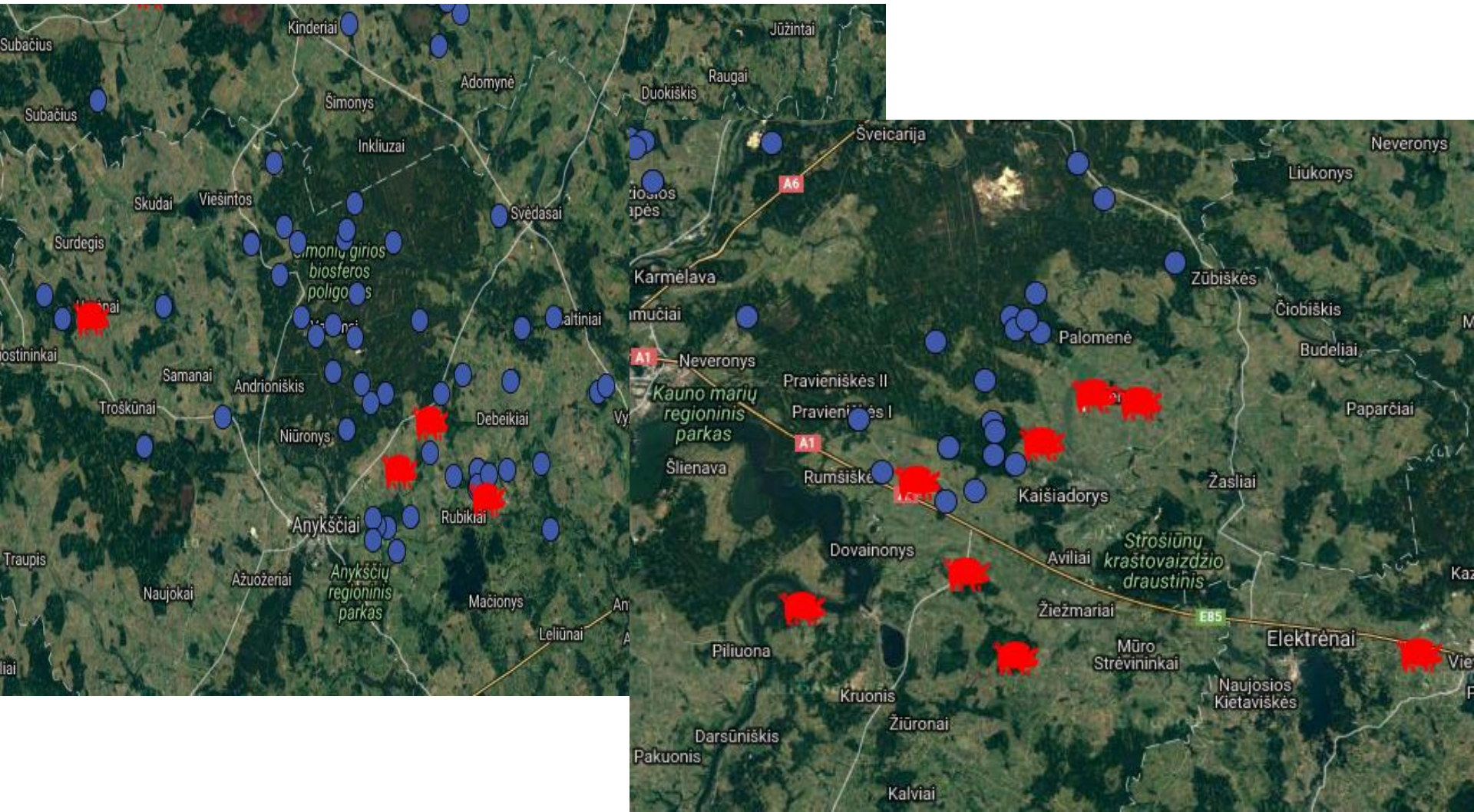
14 ASF outbreaks in domestic pigs

2016 in Lithuania were confirmed 14 outbreak in domestic pigs in 4 municipalities:
4 Anykščių r.
8 Kaišiadorių r.
1 Elektrėnų r.
1 Jonavos r



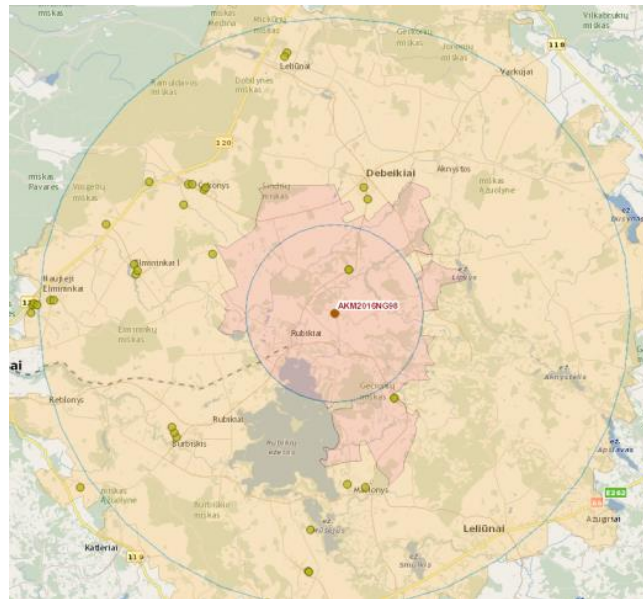
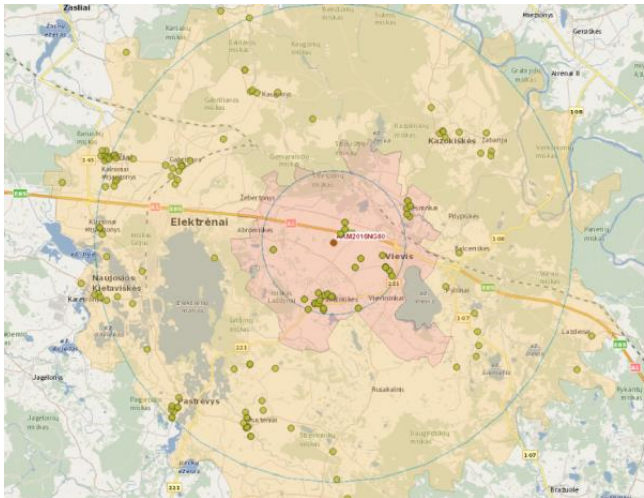
Possible ways of virus introduction

- Not appropriate biosecurity measures
- Direct and indirect contact with wild boars



Measures taken

- 3 km protection and 10 km surveillance zones were established in accordance with Directive 2002/60;
- A census of all pigs have been carried out;
- Cleaning and disinfection is carried out



According to ASF outbreaks in domestic pigs (in back yard) 8 commercial farms falls within surveillance zone



SANTE/7112/2015

Based on main criteria for lifting the restrictions in areas in Parts I, II, III and IV of the Annex to Implementing Decision 2014/709/EU:

- there have been no ASF outbreak in domestic pigs during the past 12 months or,
- **in case of total depopulation of all non-commercial farms with low biosecurity conditions, the period without any outbreaks can be reduced to 3 months.**

Total depopulation (early slaughter)

Due to number of ASF outbreaks in 4 different municipalities measures are performed :

- Holdings have been inspected
- All keepers of non commercial farms must early slaughter all pigs kept for own consumption
- Samples are taken by official veterinarian after inspection of slaughtered pig
- After negative result are received meat can be used for own consumption only.

Thank you for your attention