



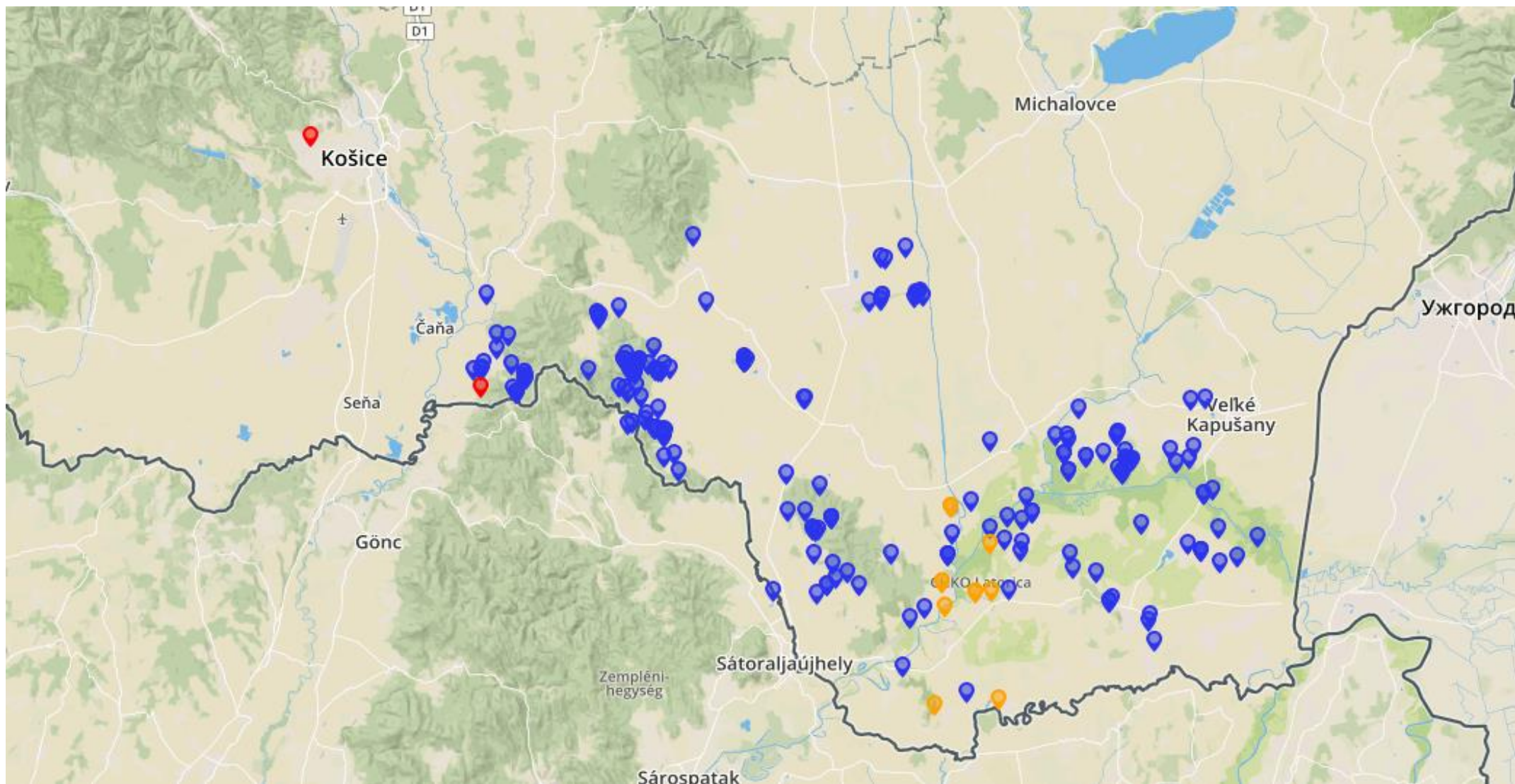
African swine fever in Slovakia state of play

June 2020, PAFF Comm.

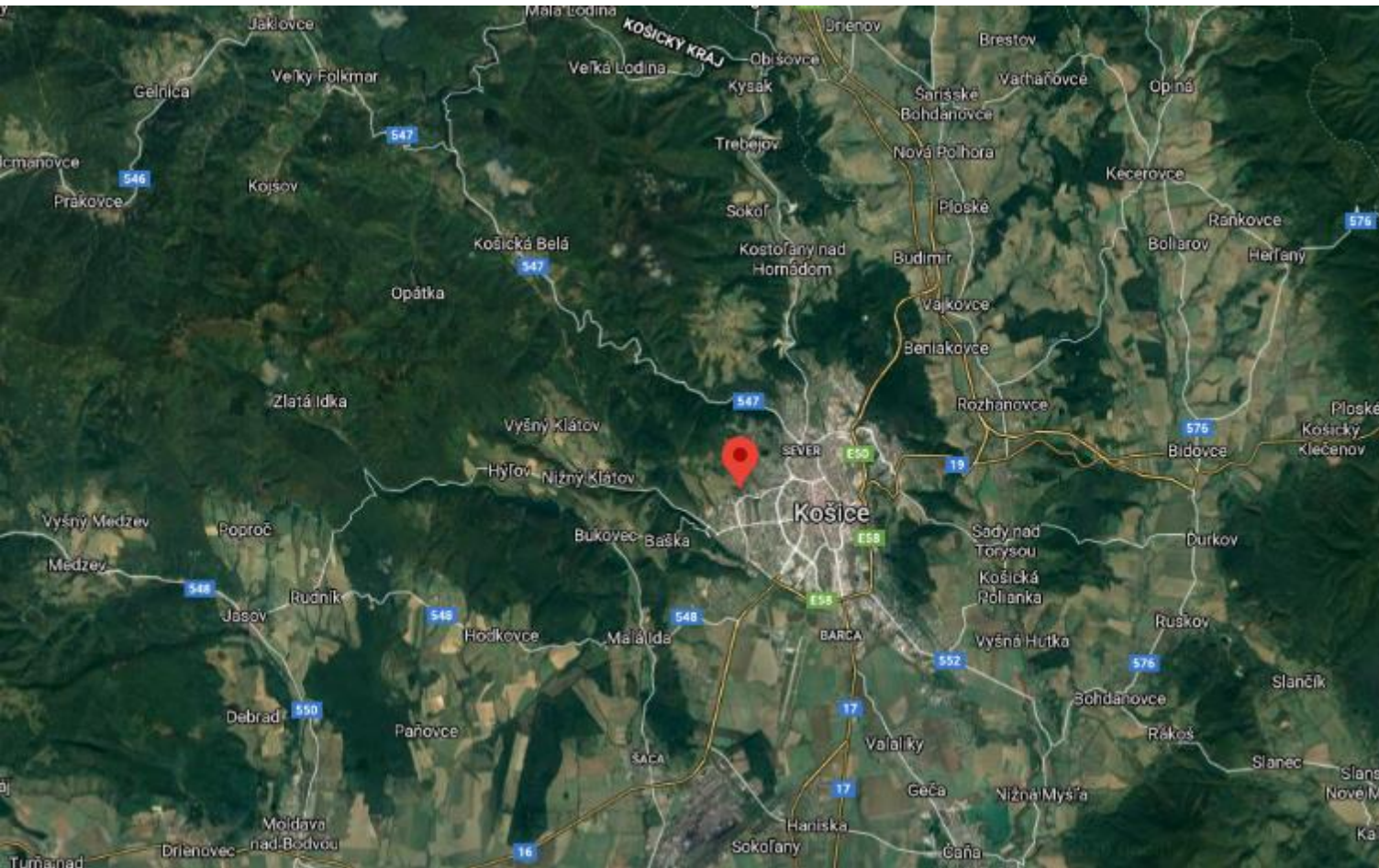
ASF in Slovakia – the development of the situation in 2020

- No **ASF outbreaks in domestic pigs from 19.8.2019 ahead**
- From 01.01.2020 till 17.06.2020 : **180** WB confirmed , 4 regions
- All ASF WB cases (except one – see next slide) confirmed within established part II area (CID 2020/46/EC)- districts Michalovce/Trebišov/Košice –okolie
- From 1. January 2020 a new buffer zone has been demarcated (Slovak - Polish borderland)- all results of lab. investigation are negative

ASF in Slovakia – state of play – July 2019 - 16.06.2020 (yellow – DP, blue – WB)



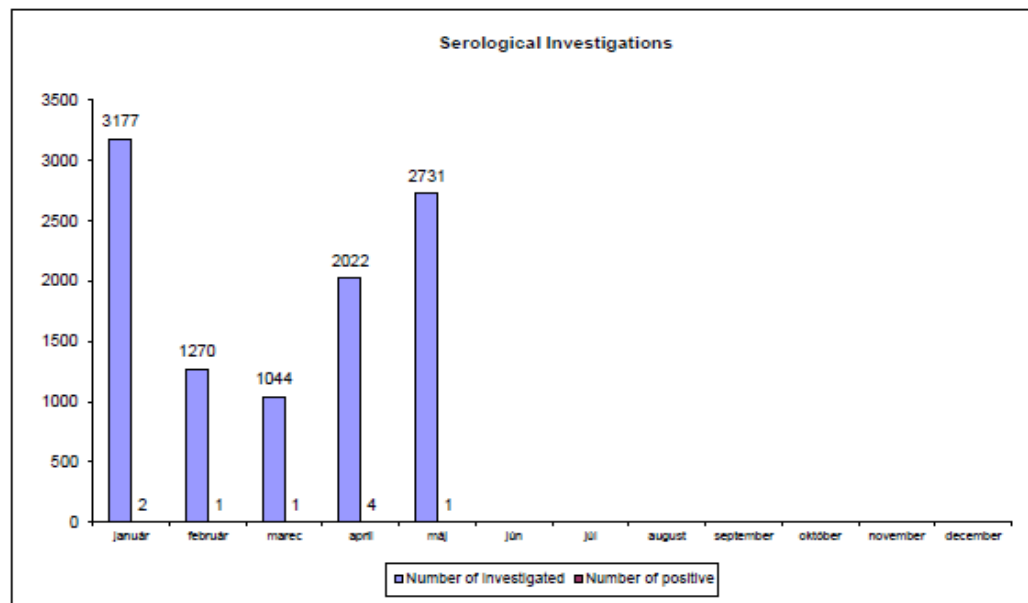
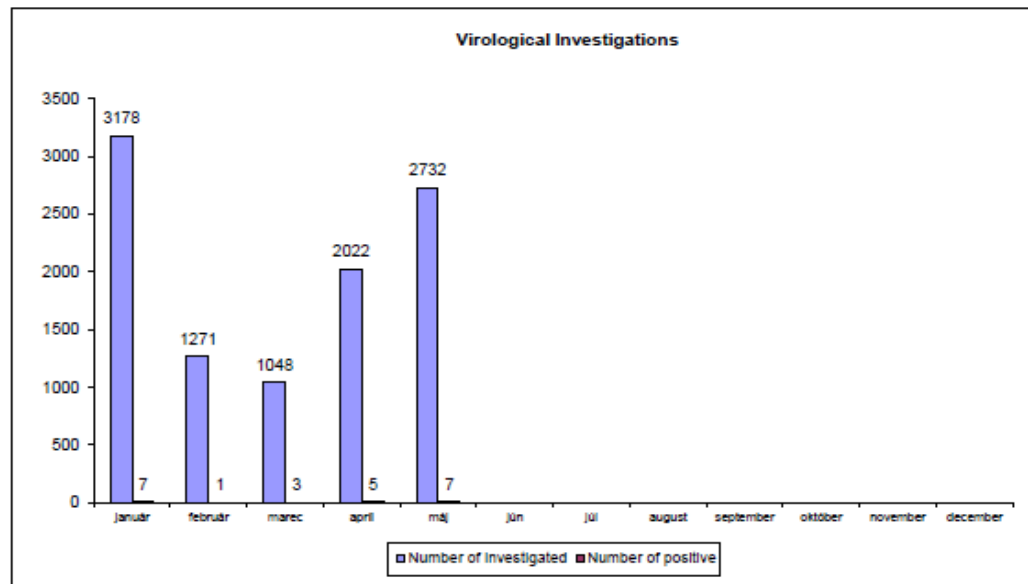
New – last case outside part II



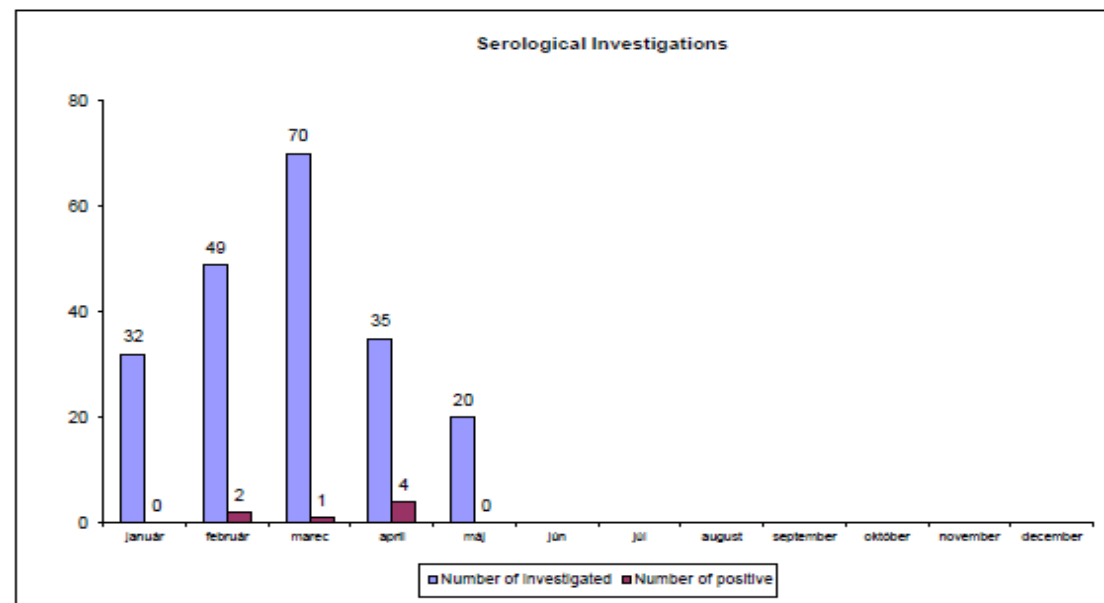
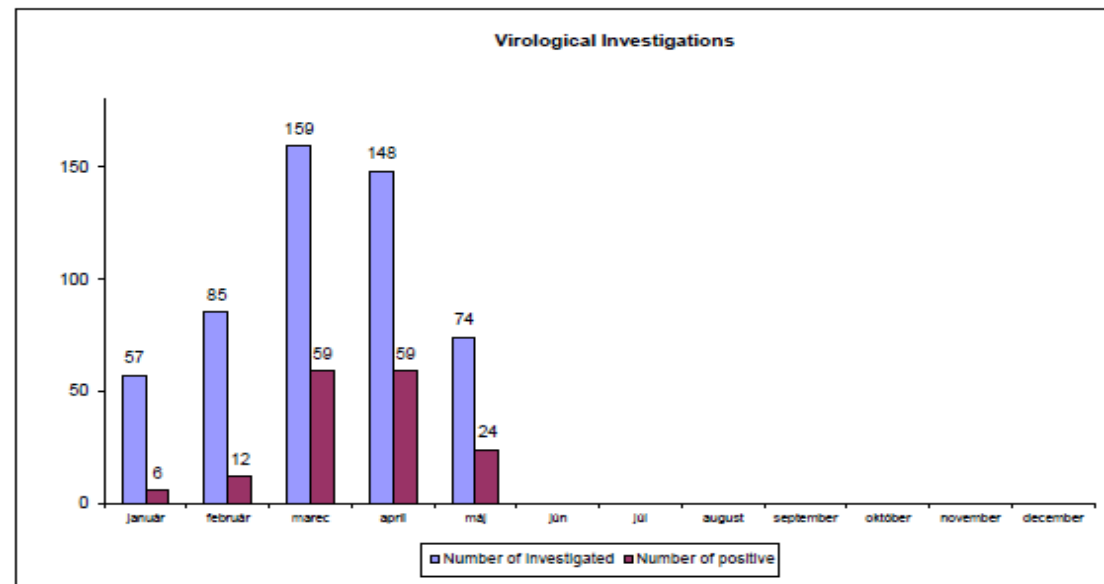
- Confirmed 11.06.2020
- ADNS 2020/121
- Within part I area
- In the city Košice
- Found dead - approx. 4 months old WB
- Safe disposal by burial

ASFV Ag- PCR POZIT

Laboratory Investigations of ASF in wild boars in Slovakia during 2020 (January - May) - active surveillance

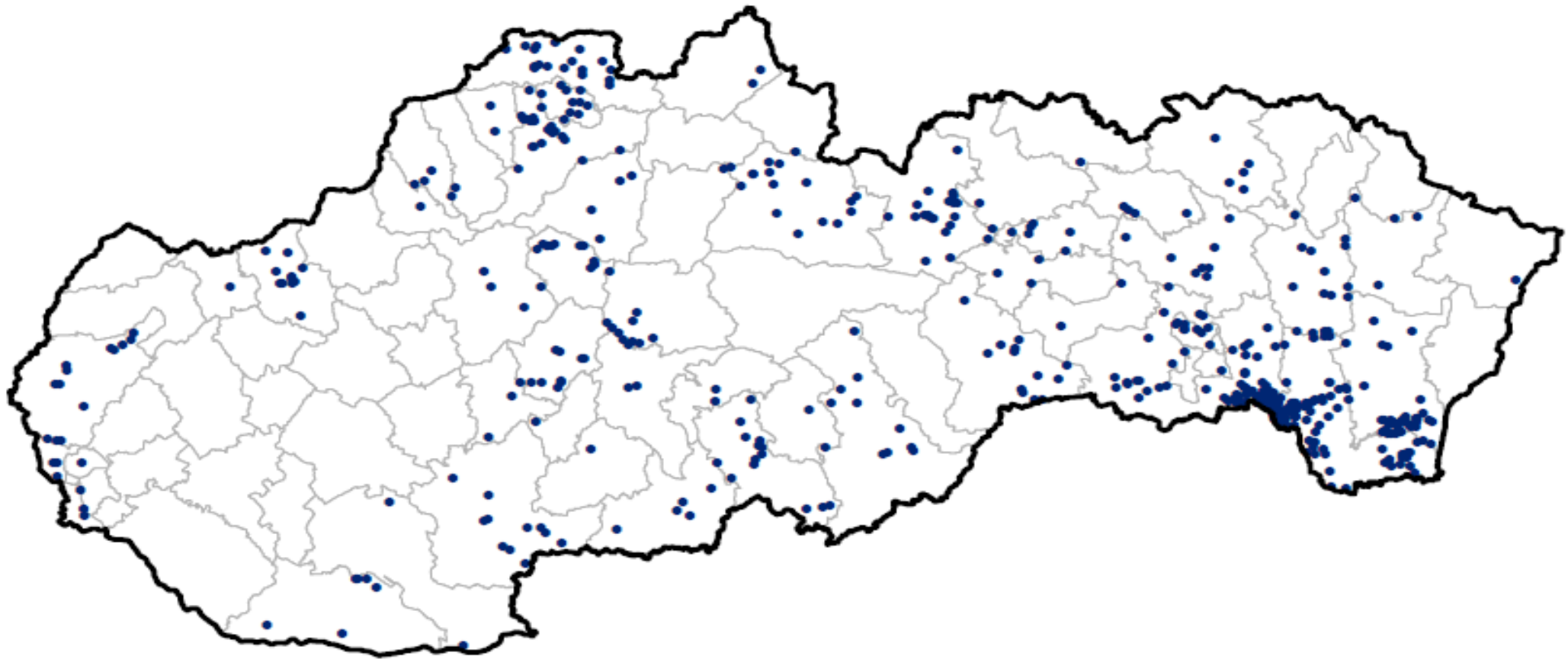


Laboratory Investigations of ASF in wild boars in Slovakia during 2020 (January - May) - passive surveillance

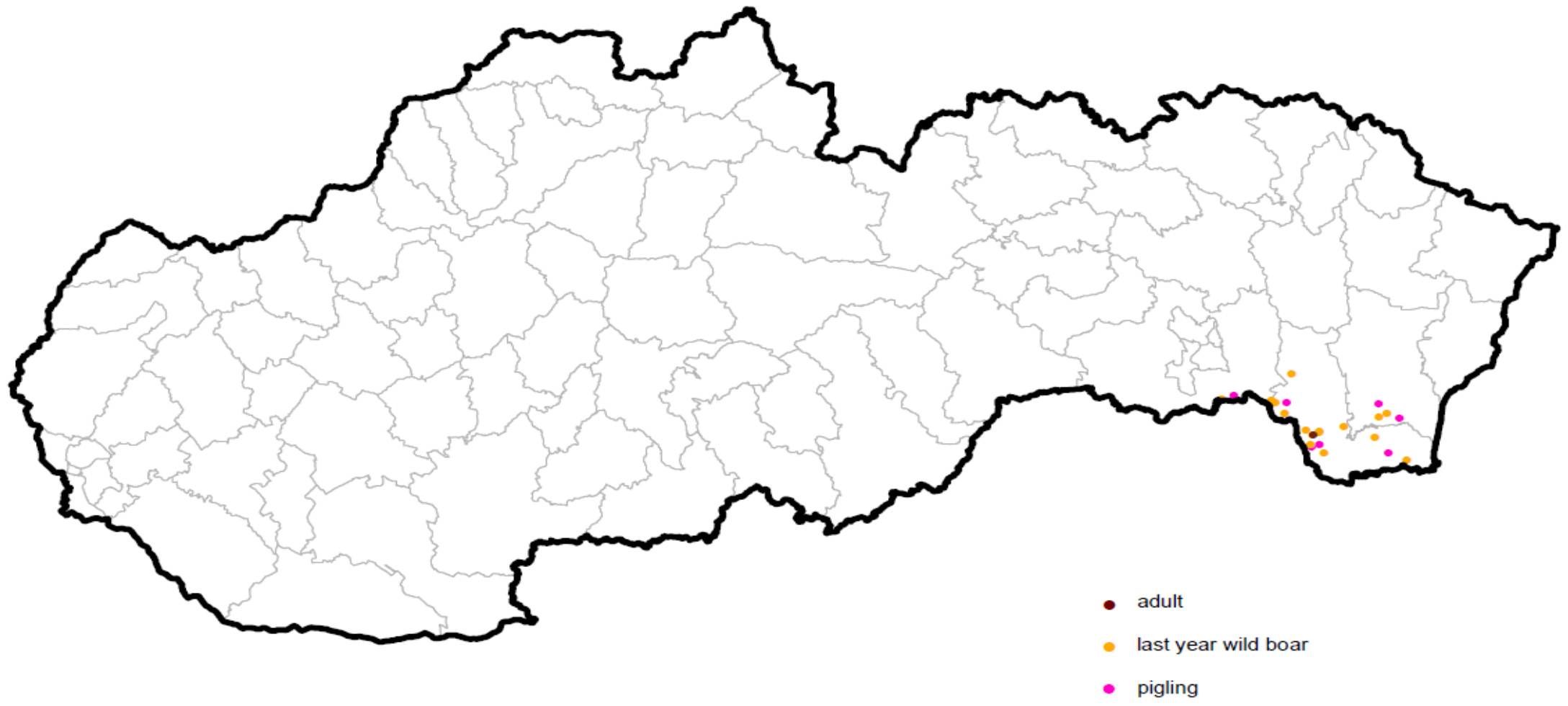


Geographical distribution of samples submitted for ASFV investigation in wild boars in Slovakia during 2020 (January - May) - passive surveillance

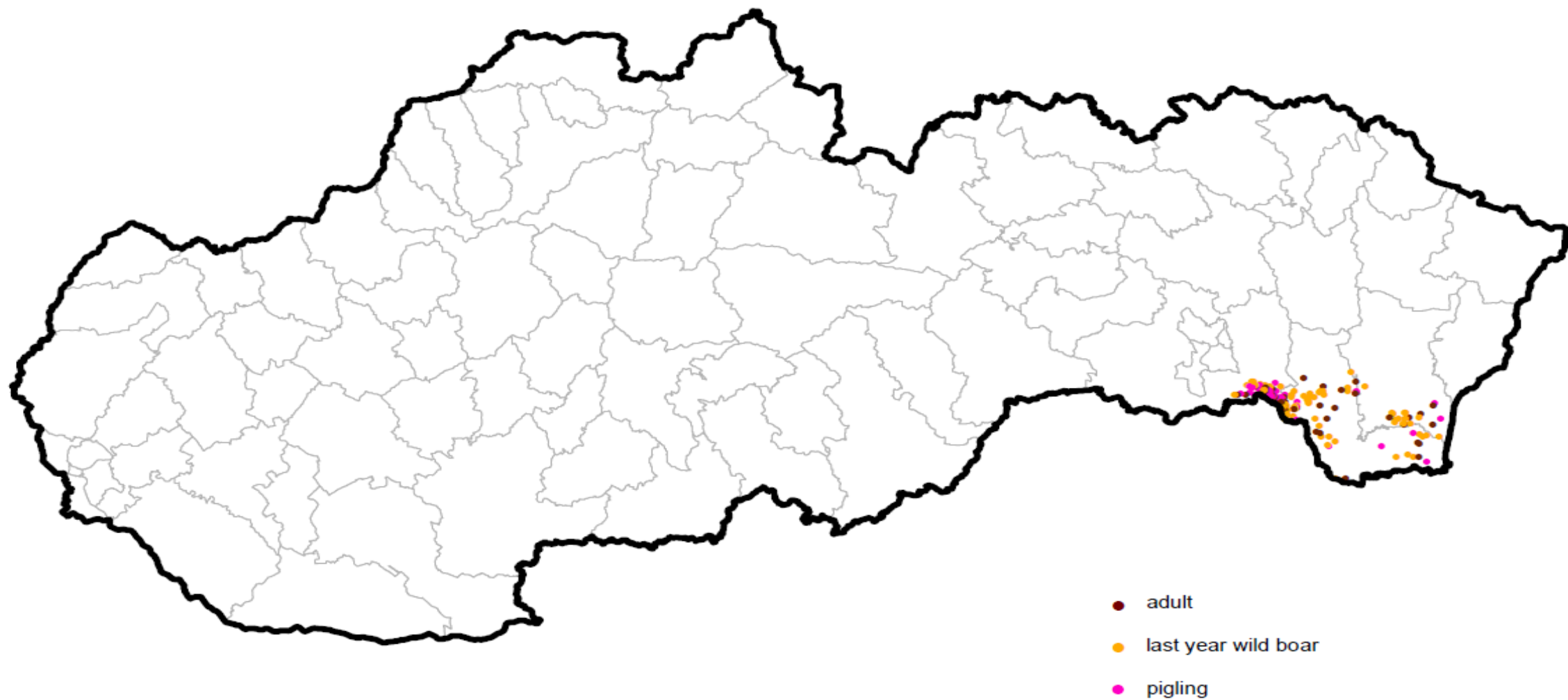
virological



Geographical distribution of wild boars samples positive for ASF virus in Slovakia during 2020 (January - May) - active surveillance

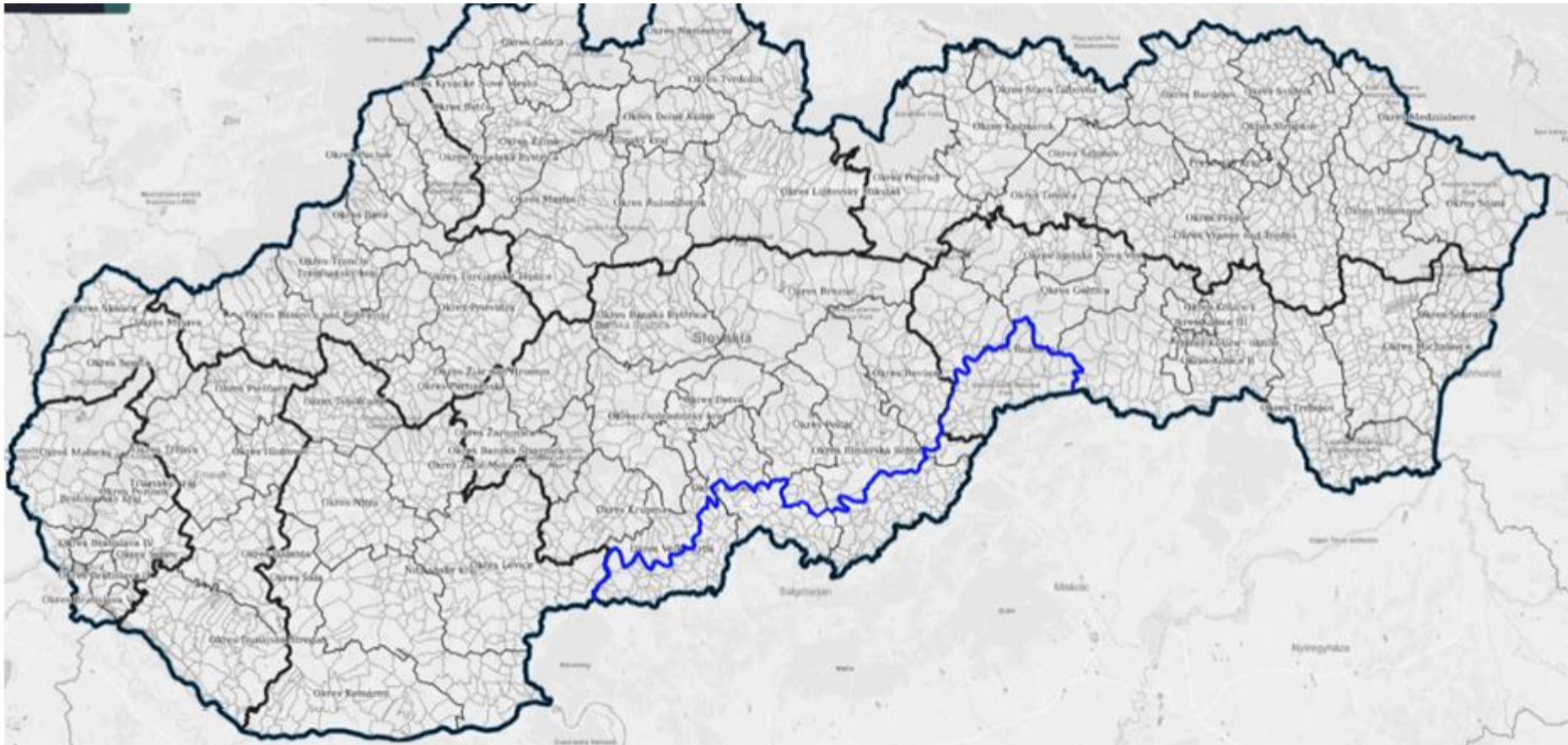


Geographical distribution of wild boars samples positive for ASF virus in Slovakia during 2020 (January - May) - passive surveillance

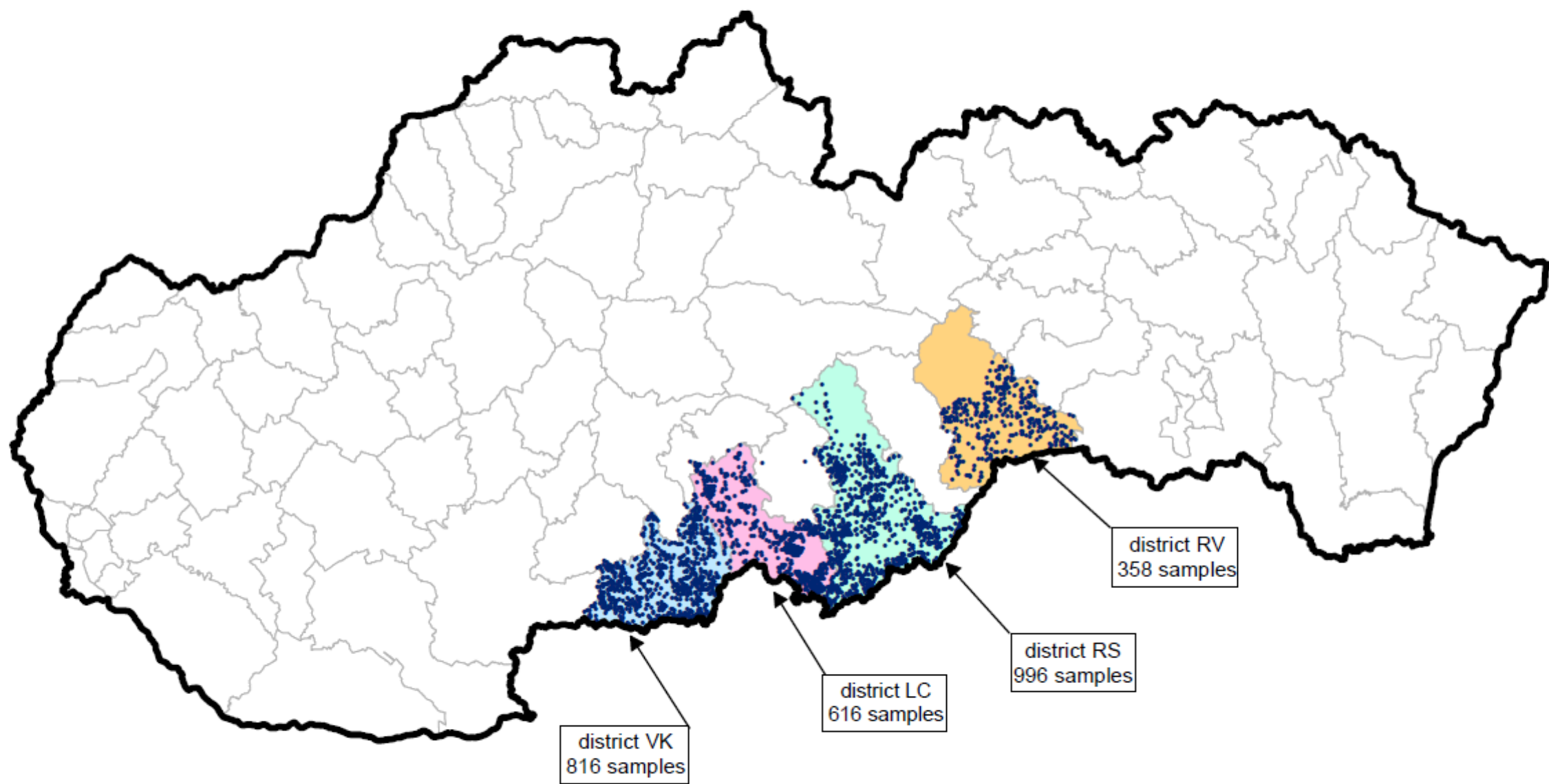


New part I – south part of Slovakia

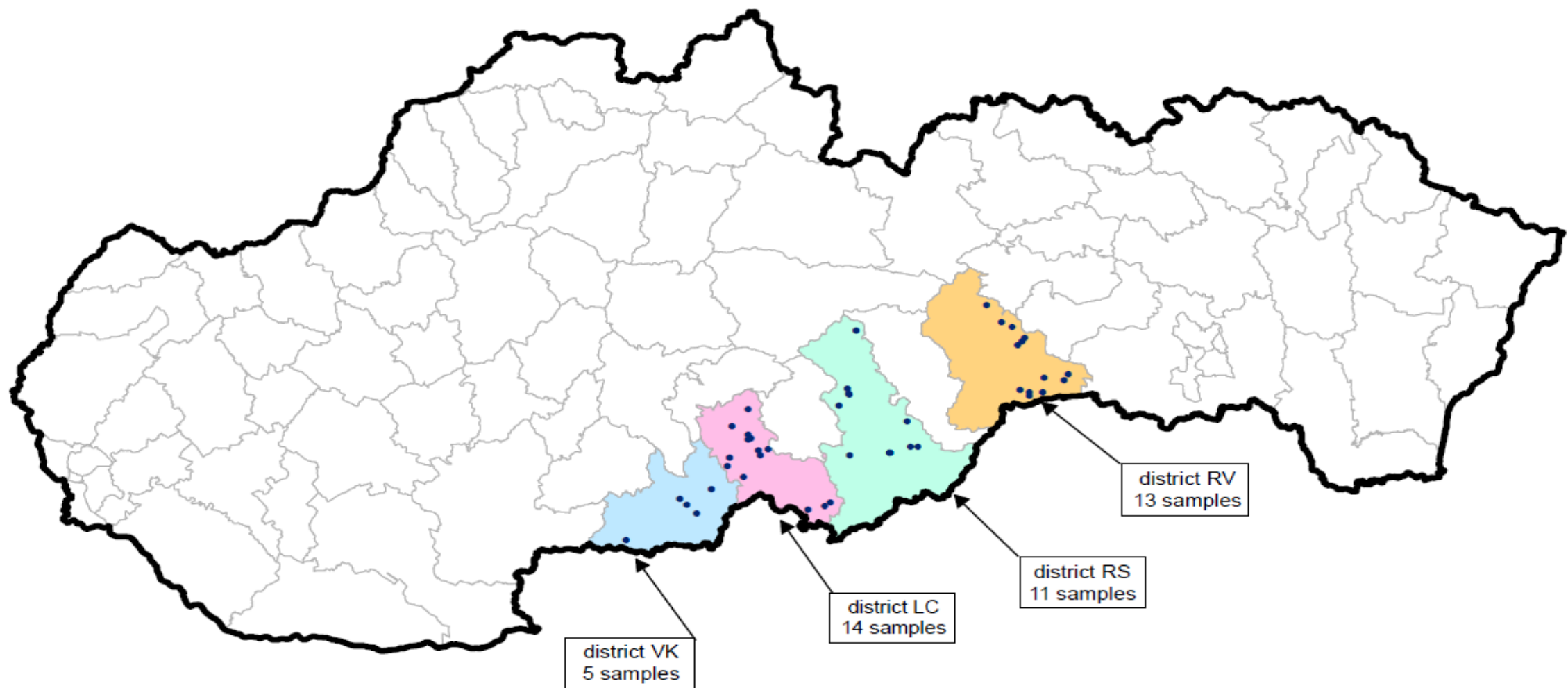
- Length – more than 145 km
- At least 10 km from the border
- Measures already ordered- slight modification because of existence of buffer zone, where the measures have been ordered/applied as in part I area
- Active/passive surveillance – obligatory



during 2020 (January - May) - active surveillance



Geographical distribution of wild boars samples investigated for ASF virus in Slovakia during 2020 (January - May) - passive surveillance

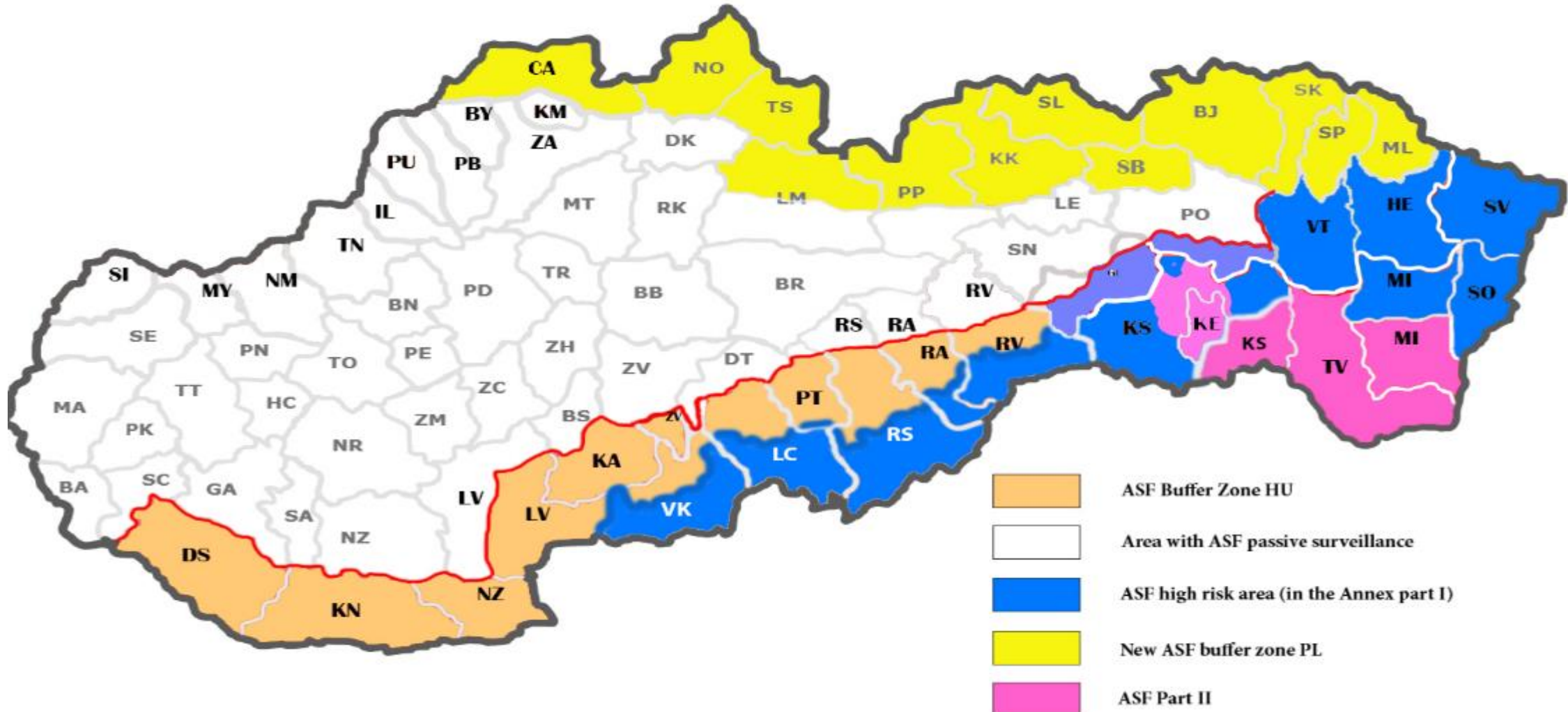


ASF new regionalisation – SK

it mirrors

a) high risk HU/SK border

b) new case in Košice city



**Regionálna veterinárna a potravinová správa Košice-mesto, Hlinkova 1/C,
040 01 Košice**

Č.j.:2020/1507-481/2

Košice, 17 júna 2020

O P A T R E N I A

Regionálna veterinárna a potravinová správa Košice-mesto (ďalej len RVPS Košice-mesto) príslušná podľa § 8 ods. 3 písm. e) a § 17 ods. 3 zákona č. 39/2007 Z.z. o veterinárnej starostlivosti v platnom znení (ďalej len „zákon č. 39/2007 Z.z.“)

nariaďuje opatrenia

na zabezpečenie kontroly a zabránenia šírenia afrického moru ošipaných (ďalej len AMO) v populácii diviacej zveri pri potvrdení výskytu AMO u diviacej zveri v poľovnom revíri

Čermeľ, kód 1532

zaradeného do infikovanej oblasti AMO Part (časť) II, ktorá bola vymedzená odbornou skupinou a je uvedená vo Vykonávacom rozhodnutí Komisie č. 2014/709 EÚ o opatreniach na kontrolu zdravia zvierat v súvislosti s africkým morom ošipaných v určitých členských štátoch a o zrušení vykonávacieho rozhodnutia 2014/178 EÚ

**užívateľovi poľovného revíru Mestské lesy Košice a.s. Košice, Južná trieda 11, 040 01
Košice, IČO: 31672981.**

Užívateľovi poľovného revíru sa nariaďuje:

1. Aktívne vyhľadávať všetky telá alebo ich časti uhynutej diviacej zveri (ďalej len diviakov) v poľovnom revíri. Za uhynutého diviaka sa pokladá aj diviak usmrtený inak ako lovom (napr. usmrtený dopravným prostriedkom, inou zverou a pod.). Návšteva za účelom vyhľadávania tiel uhynutej diviacej zveri sa uvedie v knihe návštev poľovného revíru.

Košice city- an update of measures ordered

- Valid for part II – in accordance with relevant legislation

Moreover

1. **Intensive searching** of dead WB in the city arranged in the next days
2. **Trapping of WB** – to reduce WB density in whole territory (incl. surrounding Košice okolie region)
3. Whole area –**labeling with blackboards** – ASF threat (OIE leaflet used)

Recommendation for the citizens walking in the surrounding city forests:

- **Do not leave officially recognised paths and roads**
- **Do not disturb the animals**
- **Do not harvest the berries/mushrooms**
- **In case of finding WB dead call immediately District veterinary and Food Administration/hunters association eventually police**

Expert group ASF – meeting on 16/06/2020

Main elements highlighted for domestic pigs breeders

- to apply and respect the principles of biosecurity (thorough fencing of the farm, disinfection fords, registration and control of the movement of vehicles and persons, evidence of employees and visitors to the farm, black /white system) to prevent the entry of wild boar into the farm premises, or their contact with feed and bedding
- to respect strict ban on feeding kitchen waste and wild meat products
- ban on storage of pig feed out of places accessible by wild boars
- ban on storing litter straw out of places accessible by wild boars min. 90 days before use
- regular clinical examinations/lab. investigations of farmed animals
- identification and registration of farms – obligatory !

Expert group ASF – 16.06.2020

Main elements for wild boar management

- Passive surveillance rule – crucial !
- Safe disposal of carcasses - rendering plant (always highly recommended- in part II – rule, otherwise burial on the spot possible
- Intensive hunting (also selective) – depends from the localisation of the hunting area ; Decreasing of density WB
- No feeding of WB- strict respect for amounts of feed exclusively in the baiting places
- Biosecurity by hunting and by handling with WB carcasses
- Sampling of hunted WB (it depends again from the localisation of hunting ground)





Conclusions

- 11 outbreaks (the last 19.8.2019) – situation consolidated- no outbreaks
- 180 positive WB confirmed in 2020 (till 16.06.2020) , totally 213 WB pozit.
- localized in the area south/east part of SK next to HU border
- New part I demarcated (SK/HU border area)
- Measures adopted in accordance with Eradication plan ASF SK
- New municipalities determined and should be included into part II due to WB positive finding (Košice –city area); relevant measures adopted

Thank you for your attention