

EPIZOOTIC HAEMORRHAGIC DISEASE (EHD)

EHD CHARACTERISTICS

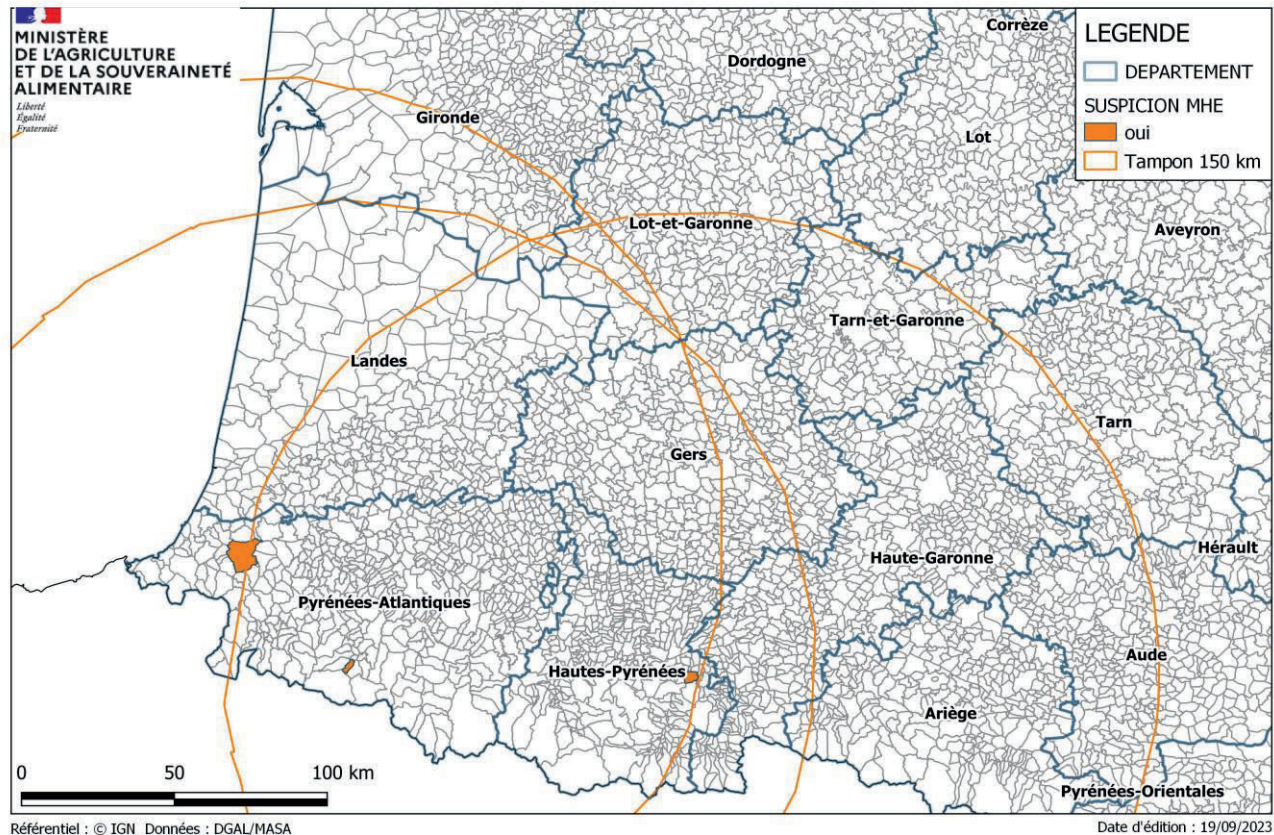
- Vector-borne disease (culicoides)
- Orbivirus (8 or more serotypes) (close from Bluetongue virus group)
- Affecting almost exclusively cattle and deer

LSA categorization

- **D** : disease with movement restrictions (zoning of 150 km around the outbreak for 2 years).
- **E** : disease subject to surveillance and notification (within 24 hours for the primary outbreak in a disease-free zone, and every week for secondary outbreaks).

Week 38 (21. sept) :

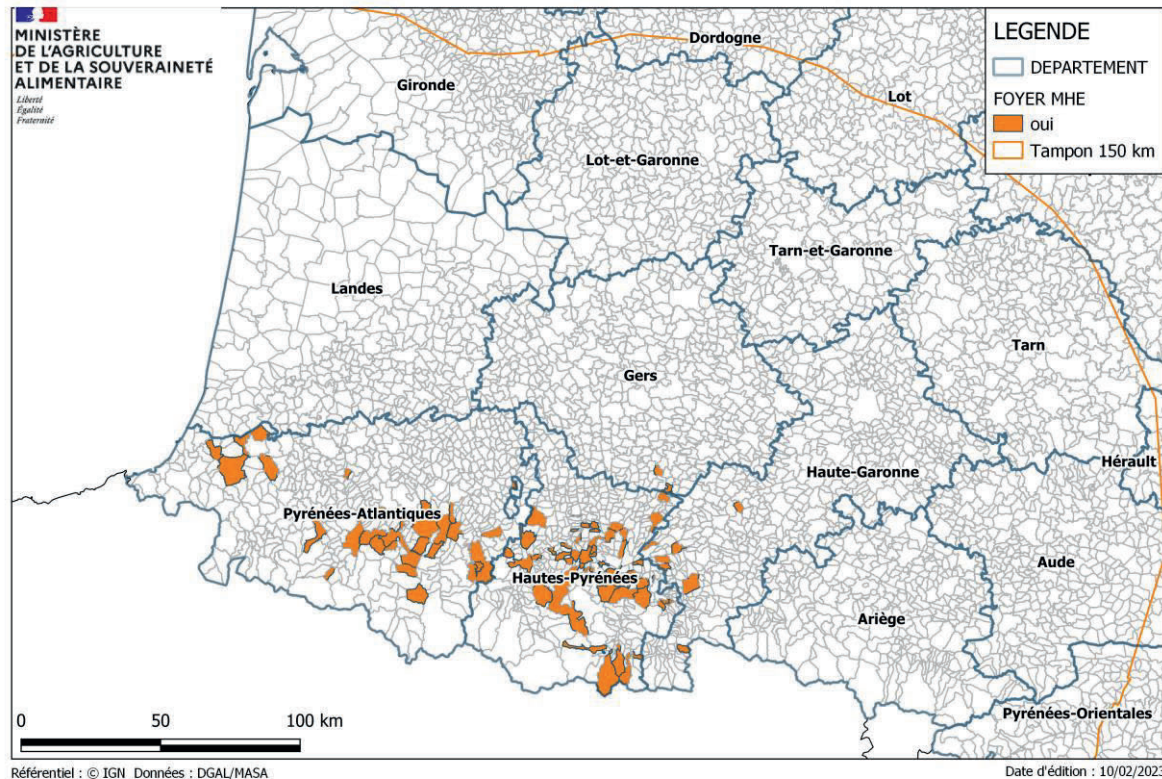
notification of **3 outbreaks** in the south west of France (2 in Pyrénées-Atlantique and 1 in Hautes-Pyrénées)



MALADIE HEMORRAGIQUE EPIZOOTIQUE (MHE) : Foyers EN FRANCE

Week 40 (2. Oct - 8. Oct) :

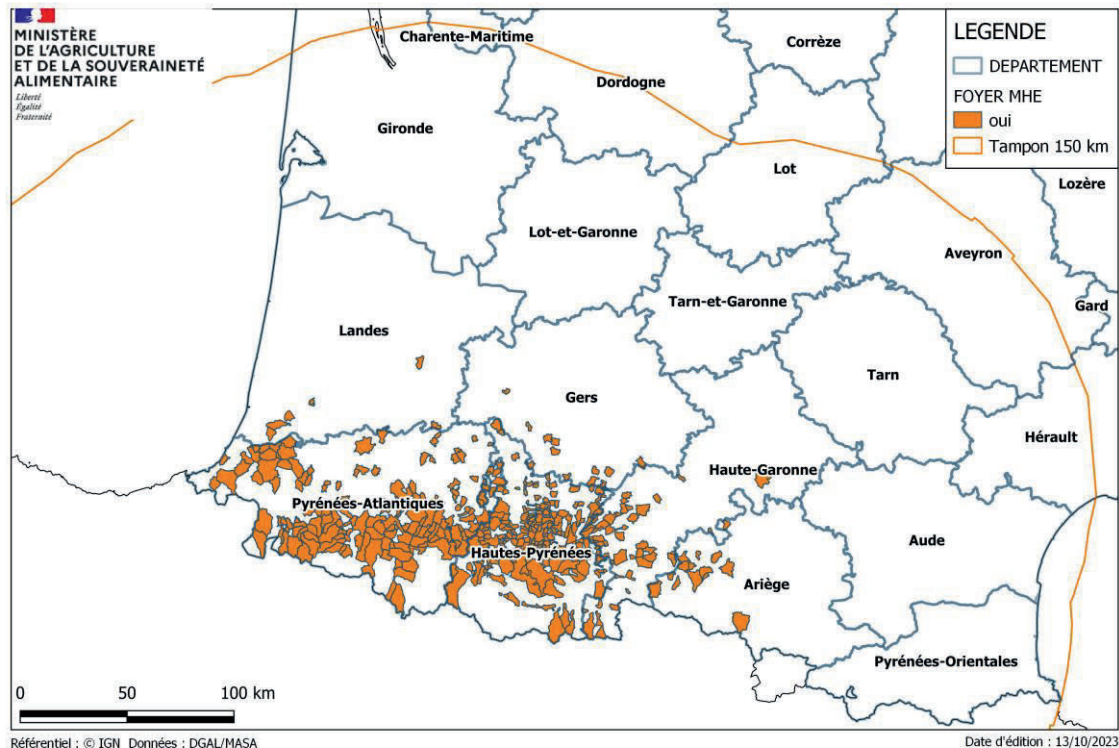
notification of 50 outbreaks in
the south west of France



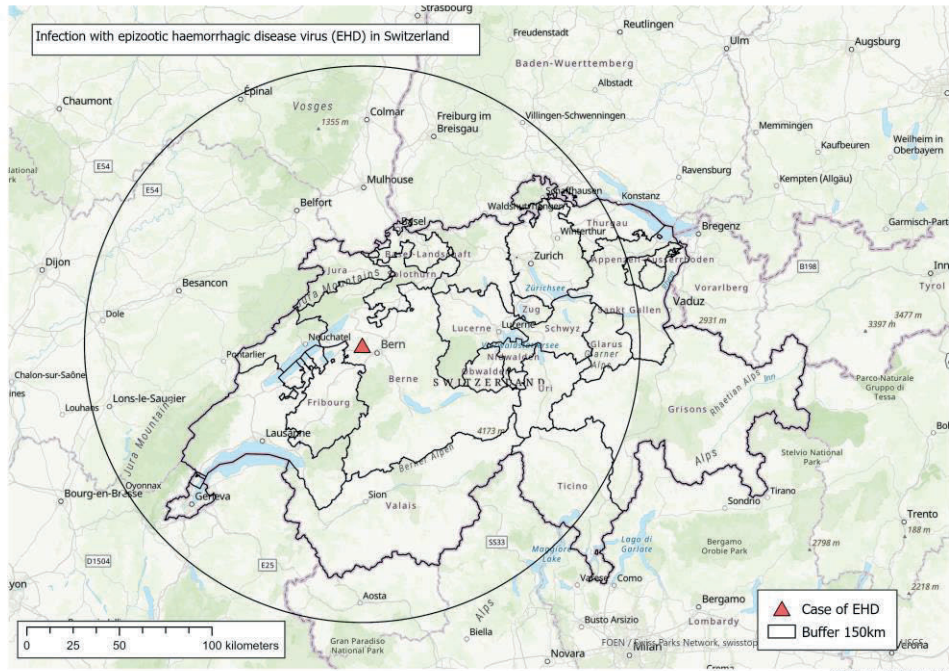
MALADIE HEMORRAGIQUE EPIZOOTIQUE (MHE) : FOYERS EN FRANCE

Week 41 (9.Oct-15. Oct) :

notification of 141 additional outbreaks



First outbreak in Switzerland, october 11th impacting eastern France



New outbreak on october 16th, 2.3 Km from the french border

