

# Recent amendments to TB Programme

- Inconclusive reactors stay in herd for life if resolved by re-test
- Contiguous herd restrictions if not tested in previous 4 months
- Extension of GIF in epidemiologically targeted cohorts
- Post – derestriction – Re-restricted at 3 months pending test



Department of  
**Agriculture,  
Food and the Marine**

An Roinn  
**Talmhaíochta,  
Bia agus Mara**

# 2016 Figures

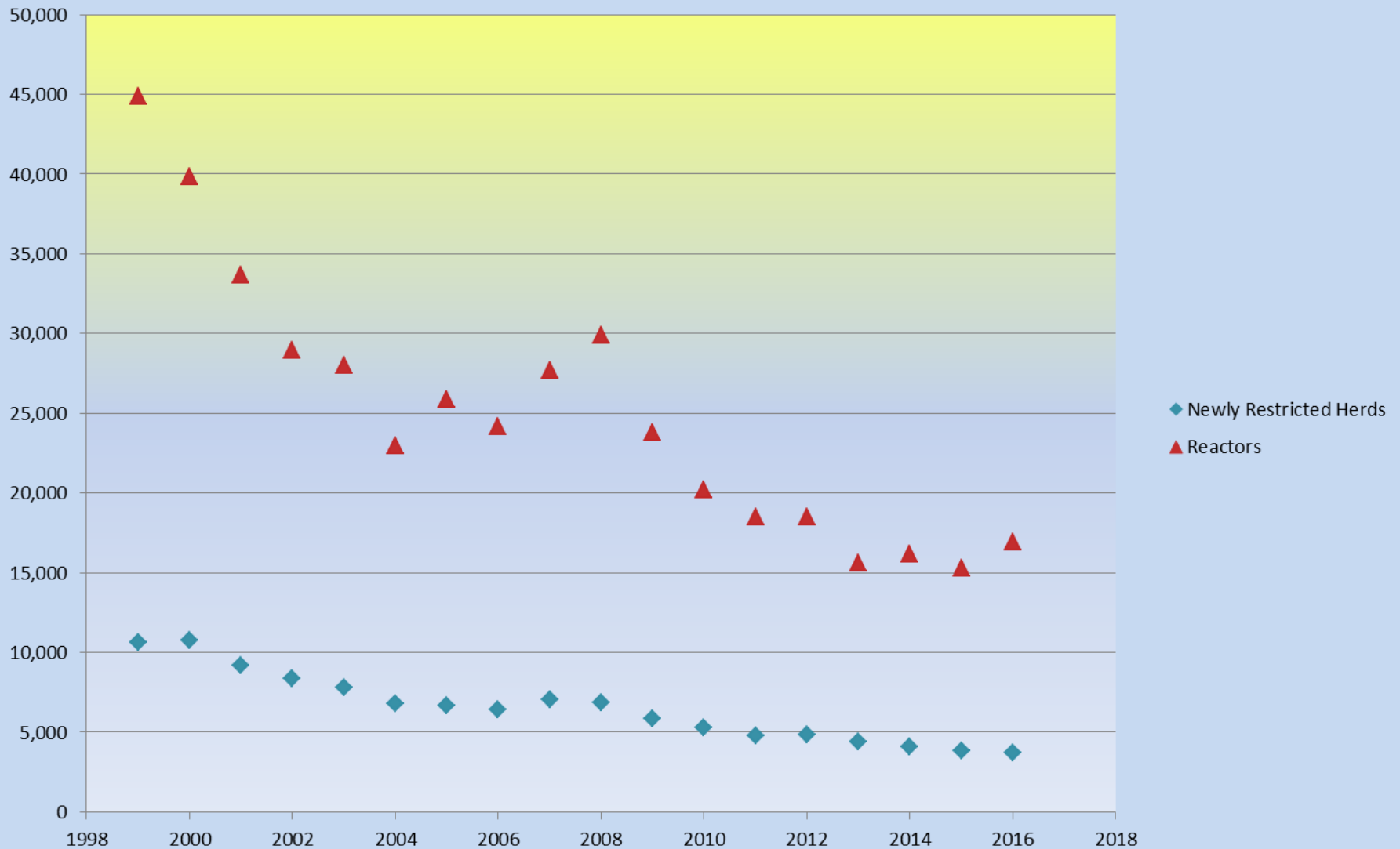
• Herds	114,706
• Bovines	6,486,362
• Number herds restricted	3,627
• Herd Incidence	3.26%
• Animals Tested	8,606,879
• Reactors	16,680
• Skin Reactors	12,762
• Area	4.6m Ha



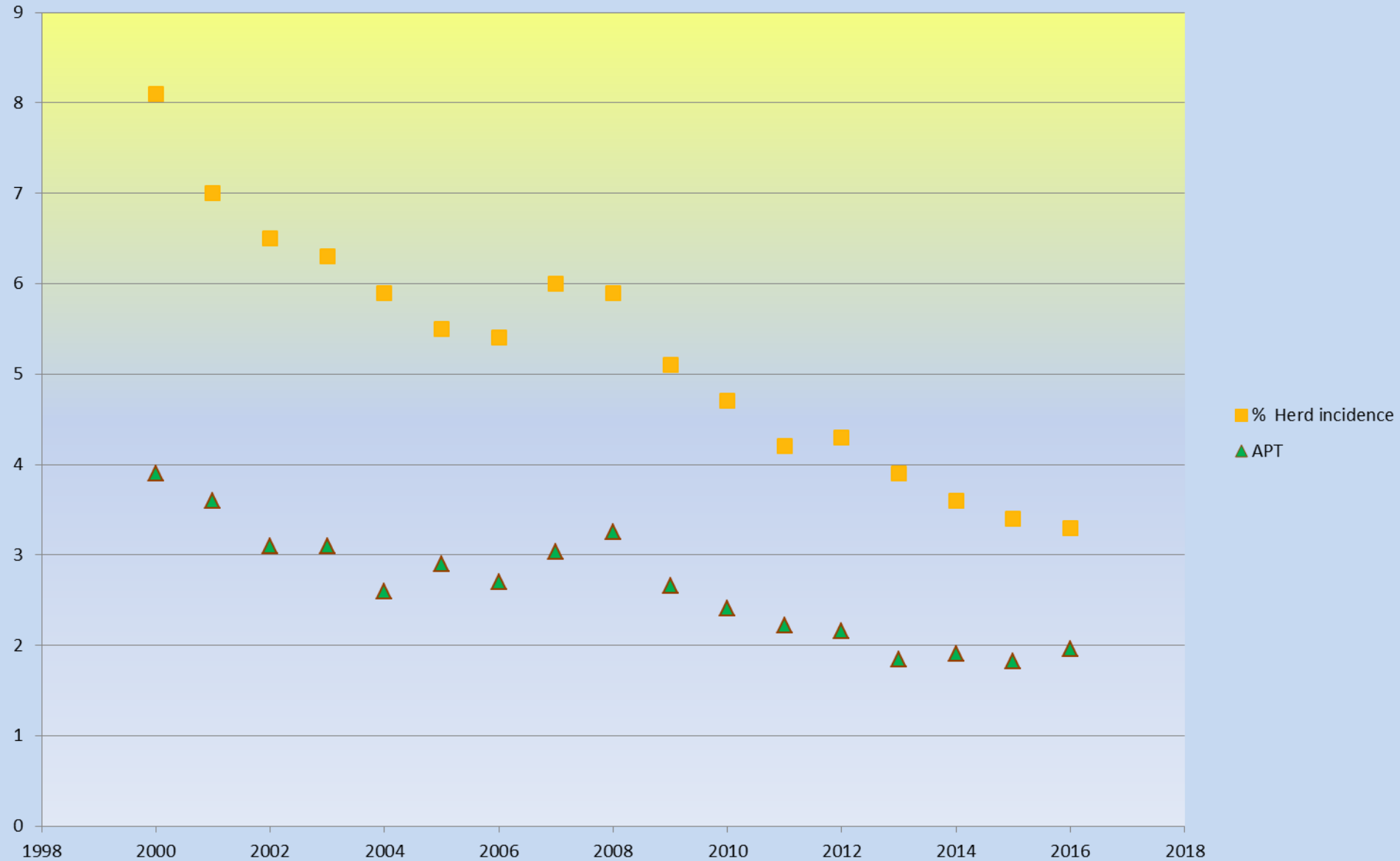
Department of  
**Agriculture,  
Food and the Marine**

An Roinn  
**Talmhaíochta,  
Bia agus Mara**

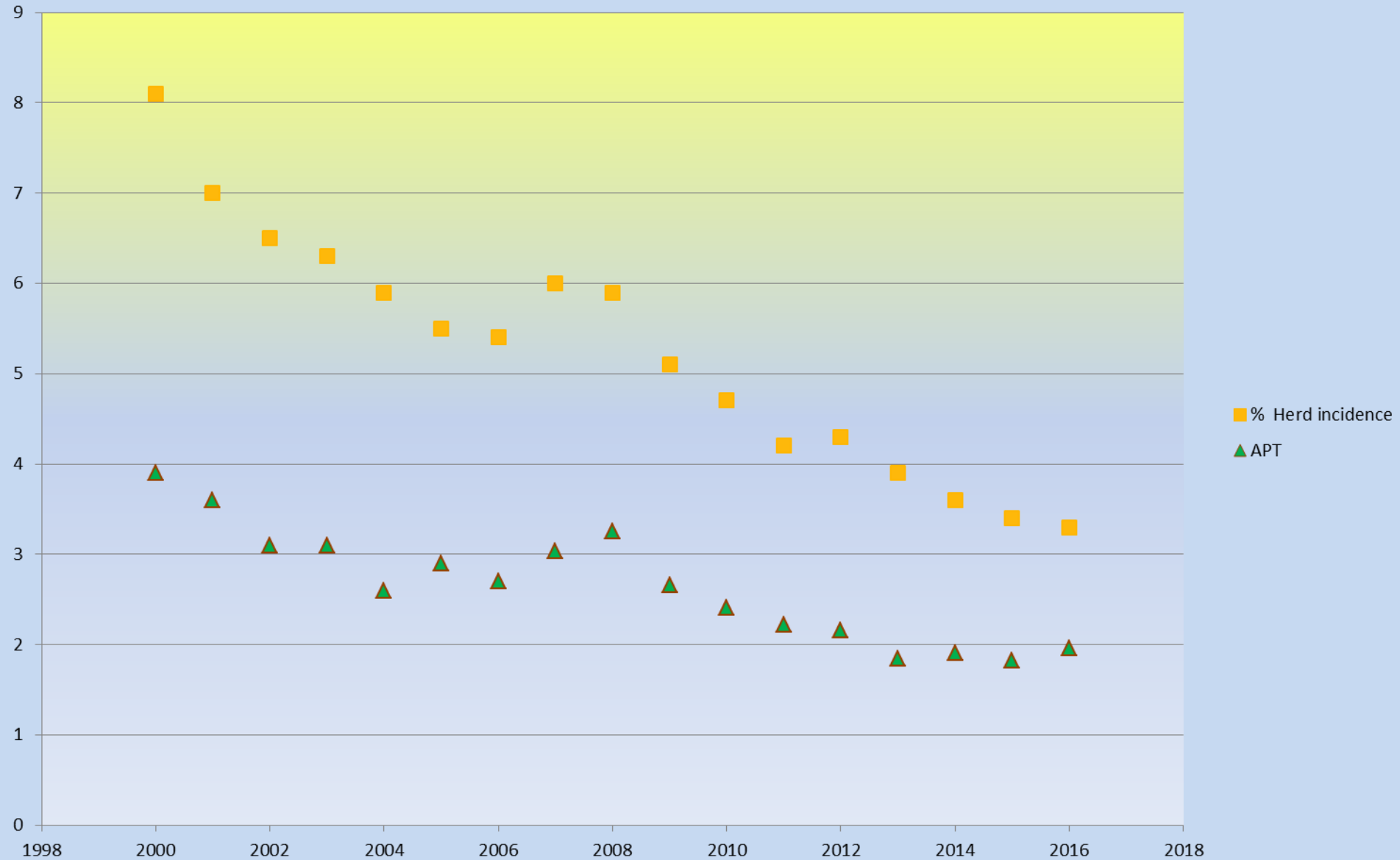
# Newly Restricted Herds and Reactor Numbers



# Herd Incidence and APT



# Herd Incidence and APT



# Reasons for recent progress

## Wildlife controls

Fewer badgers present per Km<sup>2</sup> of lands captured

Healthier badger population

## Enhanced management

Animal Health Computer System

Improved Movement controls

Within herd spread controls

Isolation and immediate removal of positives

Diagnostics - g-IFN assay

## Quality controls

Testing QC

Reactor checks

# 2016 Diagnostic Gamma Interferon Tests

- Live cells required – time limit 8 hours
- Best used in infected groups in breakdown herds
- Identifies reactors previously undiagnosed by skin test
- 9,586 in 2014 to 34,341 in 2016

# Wildlife Control Developments

- Vaccination Areas since 2012
- Non-Inferiority Trial
- Positive results heretofore
- Extension to new areas in 2018



Department of  
**Agriculture,  
Food and the Marine**

An Roinn  
**Talmhaíochta,  
Bia agus Mara**

[www.agriculture.gov.ie](http://www.agriculture.gov.ie)



# Targets

- 2020 – Herd Incidence 1.56
- 2030 – OTF Status