



PPILOW

A multiactor approach for improving animal welfare in poultry and pig low input outdoor and organic production systems

Anne Collin,

INRAE

INRAE, Université de Tours, BOA, 37380 Nouzilly, France

10th meeting of the EU Animal Welfare Platform, 10th November, 2021



Why is it important to consider welfare in low-input outdoor and organic farming systems?

- High quality of the rearing system and of the products
- Diversity of practices throughout Europe
- Still a need to improve animal welfare and limit mortality, in relation to the outdoor access challenging the animals, ethical issues, the wish of practitioners and societal expectations

Evaluation of the animal welfare-improving practices by taking into account environmental, economic and social impacts *including human well-being (practitioners, consumers, citizens)*

PPILOW partners and collaborators



PPILOW

Poultry and Pig Low-input and Organic production systems' Welfare

2019-2024



- Research institute
- Technical Institute
- Citizen/Practitioner Association
- SME
- University/Higher education



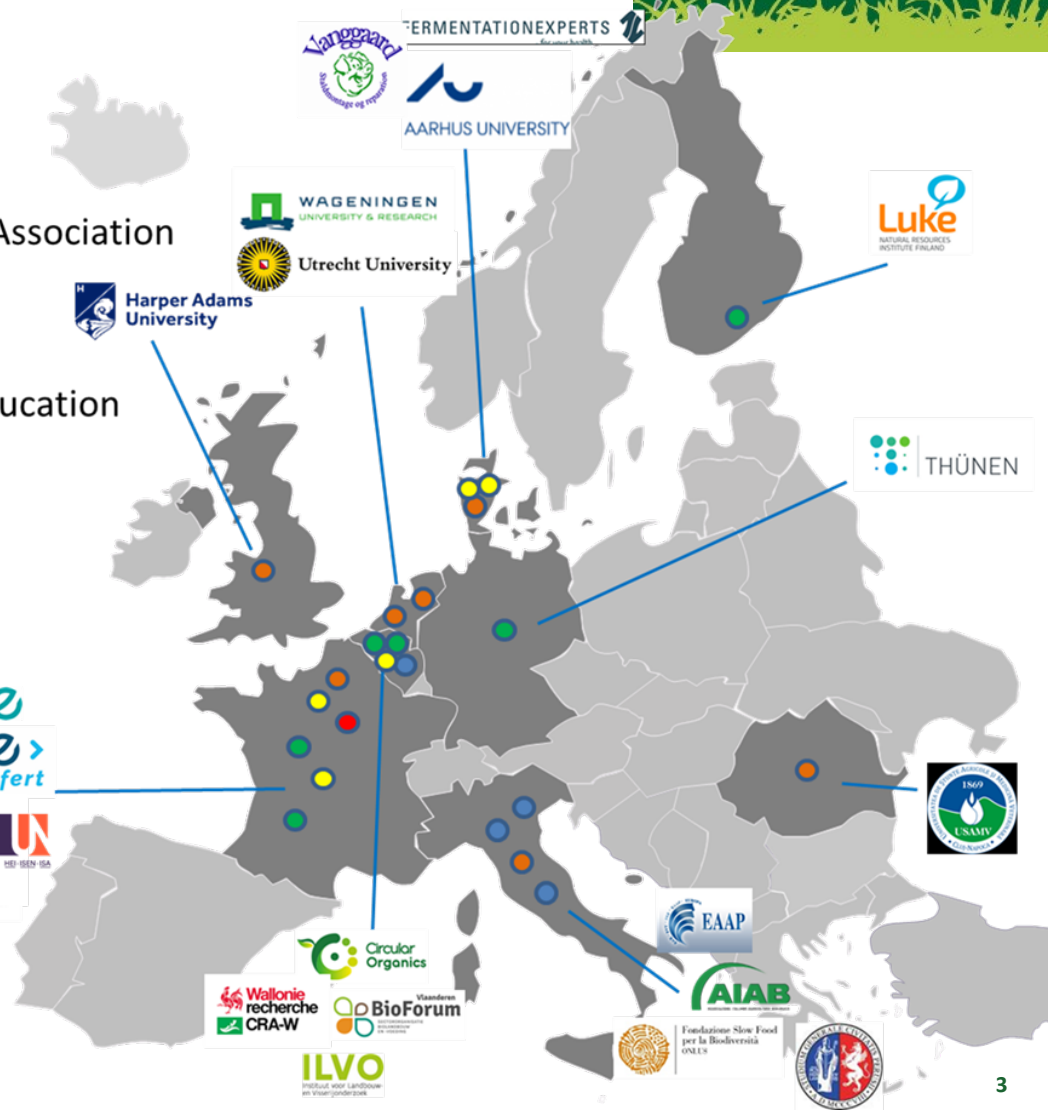
Coordination:



23 PPILOW Partners in 9 countries

9 National Practitioner Groups (NPG)

www.ppilow.eu



PPILOW Participatory approach led by AIAB (Italy)



Practitioners involved:

- Farmers
- Breeding companies
- Hatcheries
- Nutrition firms
- Equipment firms
- Slaughter houses & Processors
- Retailers
- Production organizations
- Veterinarians...



©INRAE



©Thuenen

Different organisation scales depending on the country and production types

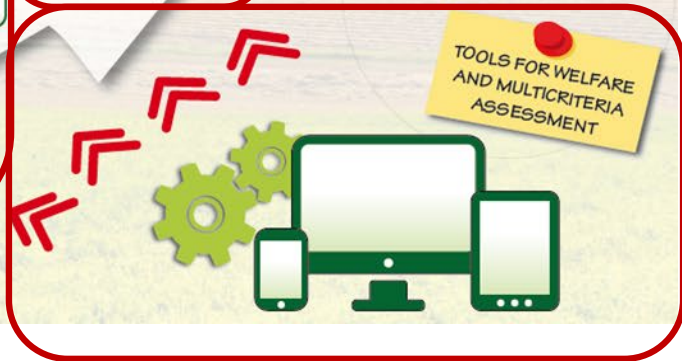
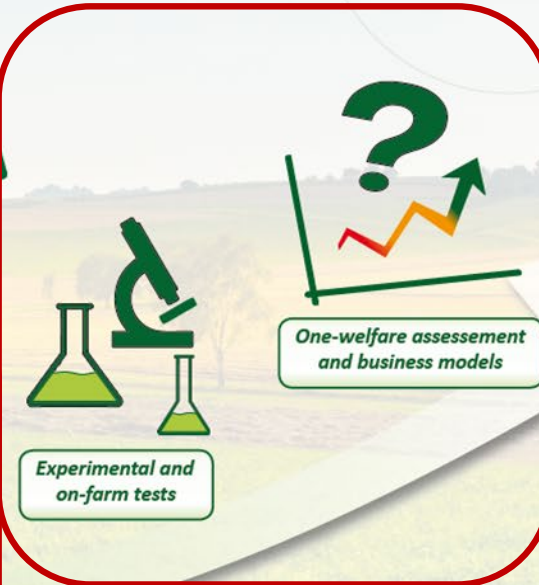
Other members of the society involved:

- Organic production syndicates, associations or federations
- Consumer associations
- Citizen associations, especially dedicated to animal welfare
- Policy makers



©USAMV Cluj 4

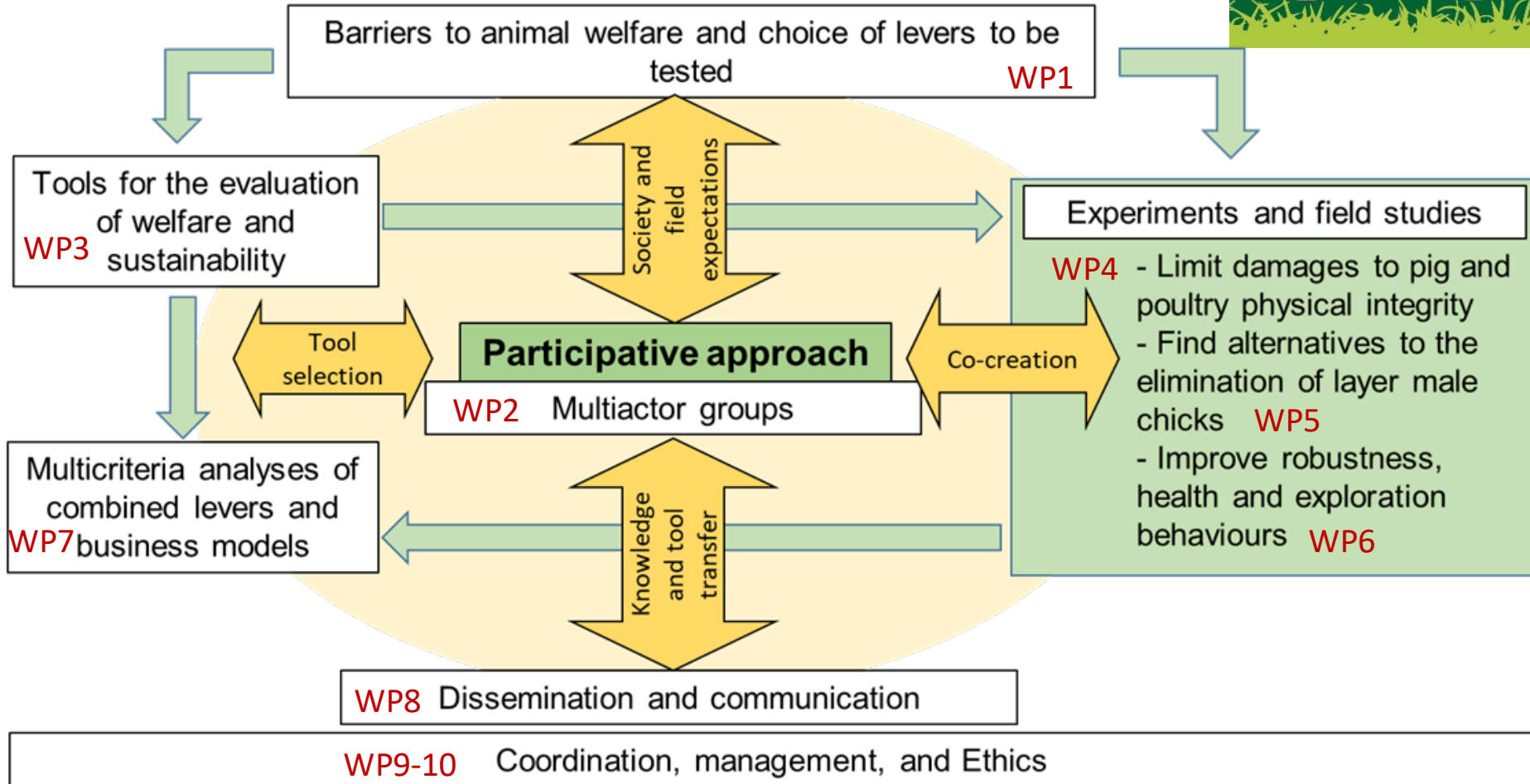
Innovative breeding and rearing strategies



Favouring positive behaviours, improving health and robustness

Avoiding piglet castration, beak trimming, the elimination of layer male chicks

PPILOW Organisation



PPILOW first outputs



Shortlist of barriers and economically-sound potential levers for welfare improvements

Two applications for on farm welfare self-assessment PIGLOW and EBENE,

Tables for collecting experimental and farm data for multicriteria One Welfare evaluations

SET-UP OF ON-FARM TRIALS

Participative approach

Tools to facilitate interactions between partners and NPGs

society and field expectations

Knowledge and transfer

Communications to practitioners, policy makers, general public and scientists
PPILOW website, social media and videos (3)
EIP AGRI abstracts in process...

First experimental results on the use of:

- Incubation conditions and insect larvae for limiting feather pecking in non beak-trimmed hens
- Males and females from 2 dual purpose crossbreeds or local/rustic breeds to avoid the elimination of day-old male chicks
- In ovo sexing after 1 day of incubation
- Alternative feeds (plant extracts, fermented feeds) in hens or pigs for limiting pathologies and parasitism
- Genetic lines and new hut design for sow and piglet welfare and survival...

PPILOW PARTNERS



Thank you for your attention

www.ppilow.eu