

The National Sanitary Veterinary and Food Safety Authority of Romania



# EPIDEMIOLOGICAL SITUATION - ASF



SCoPAFF

14.12.2020



# ASF - EPIDEMIOLOGICAL SITUATION 01.01 – 10.12.2020

## 1. Backyards

No. of holdings/RO	No. of pigs/RO	No. of outbreaks	% infected
515.851	1.966.934	<b>954</b>	0,185%

## 2. Commercial farms (Industrial and Type A)

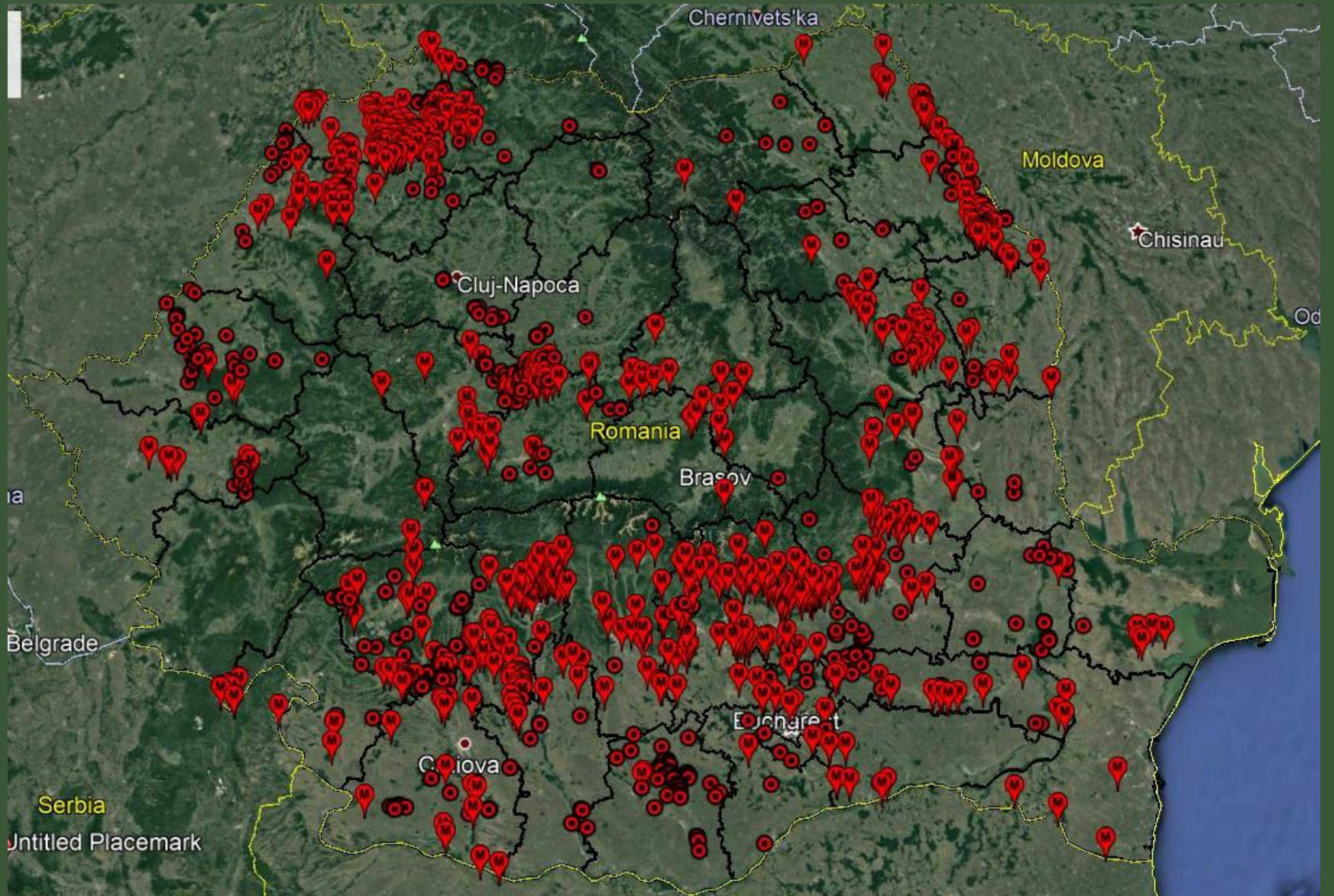
No. of holdings/RO	No. of pigs/RO	No. of outbreaks	% infected
11.179 (397 Ind + 10.782 type A)	2.145.418= 2.069.348+ 76.070	<b>28</b> (20 Ind + 8 Type A)	0,250%



# ASF - EPIDEMIOLOGICAL SITUATION 01.01 – 10.12.2020

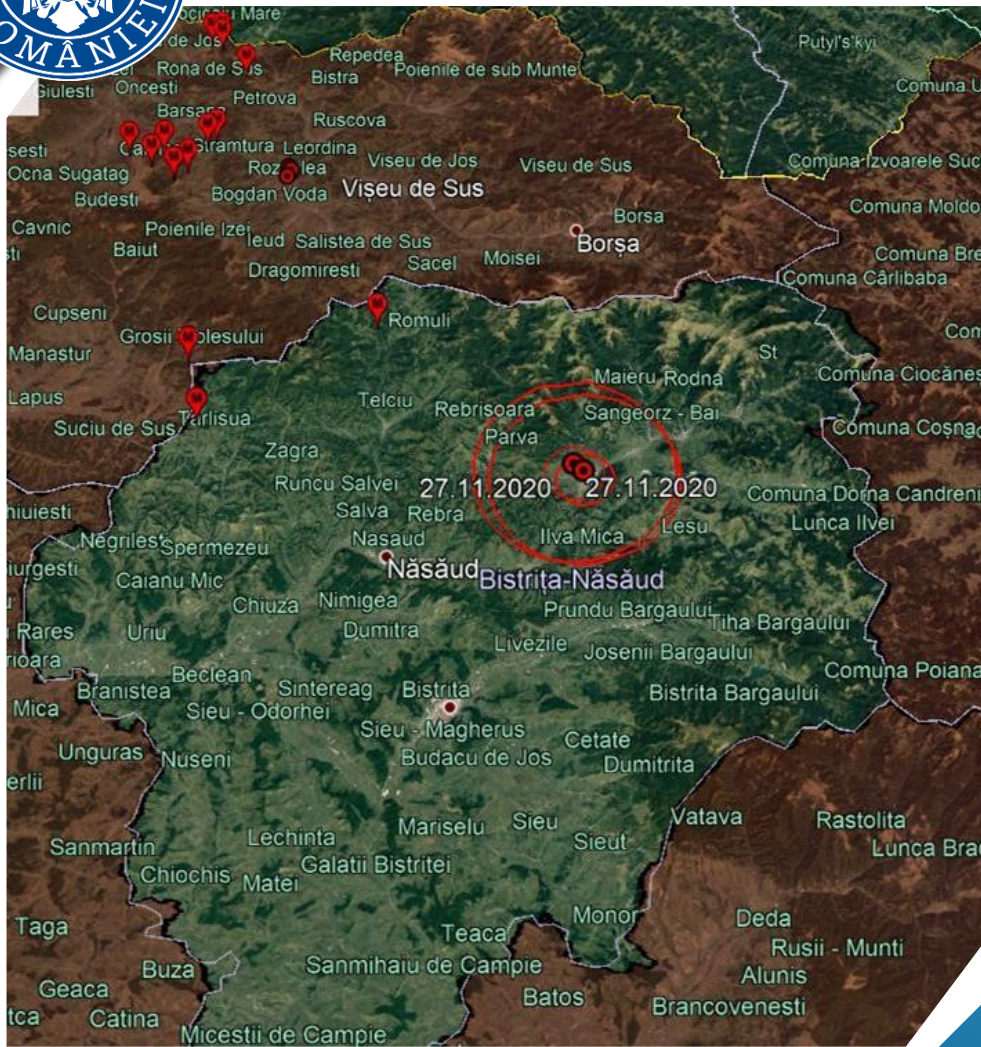
## 3. Wild boars

<b>No. of estimated wild boars/RO (2020 spring census)</b>	<b>No. of positive cases -TOTAL-</b>	<b>% infected</b>
80.331	1635	2,035%
<b>No. of tested hunted wild boars</b>	<b>No. of hunted positive cases</b>	<b>% infected</b>
46.612	491	1,053%
<b>No. of found dead wild boars</b>	<b>No. of found dead positive cases</b>	<b>% infected</b>
2.167	1144	52,792%





# SINCE LAST SCOPAFF AMENDMENTS OF REGIONALISATION

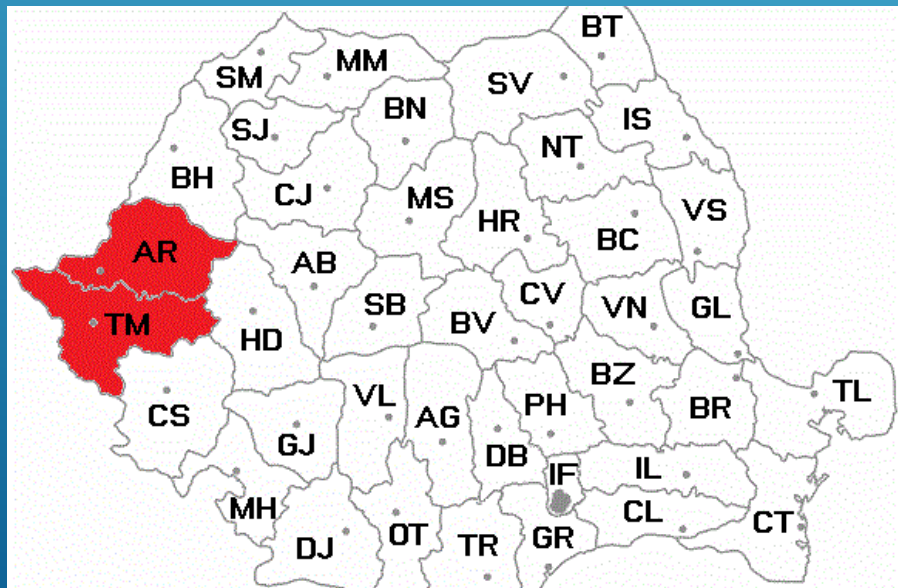
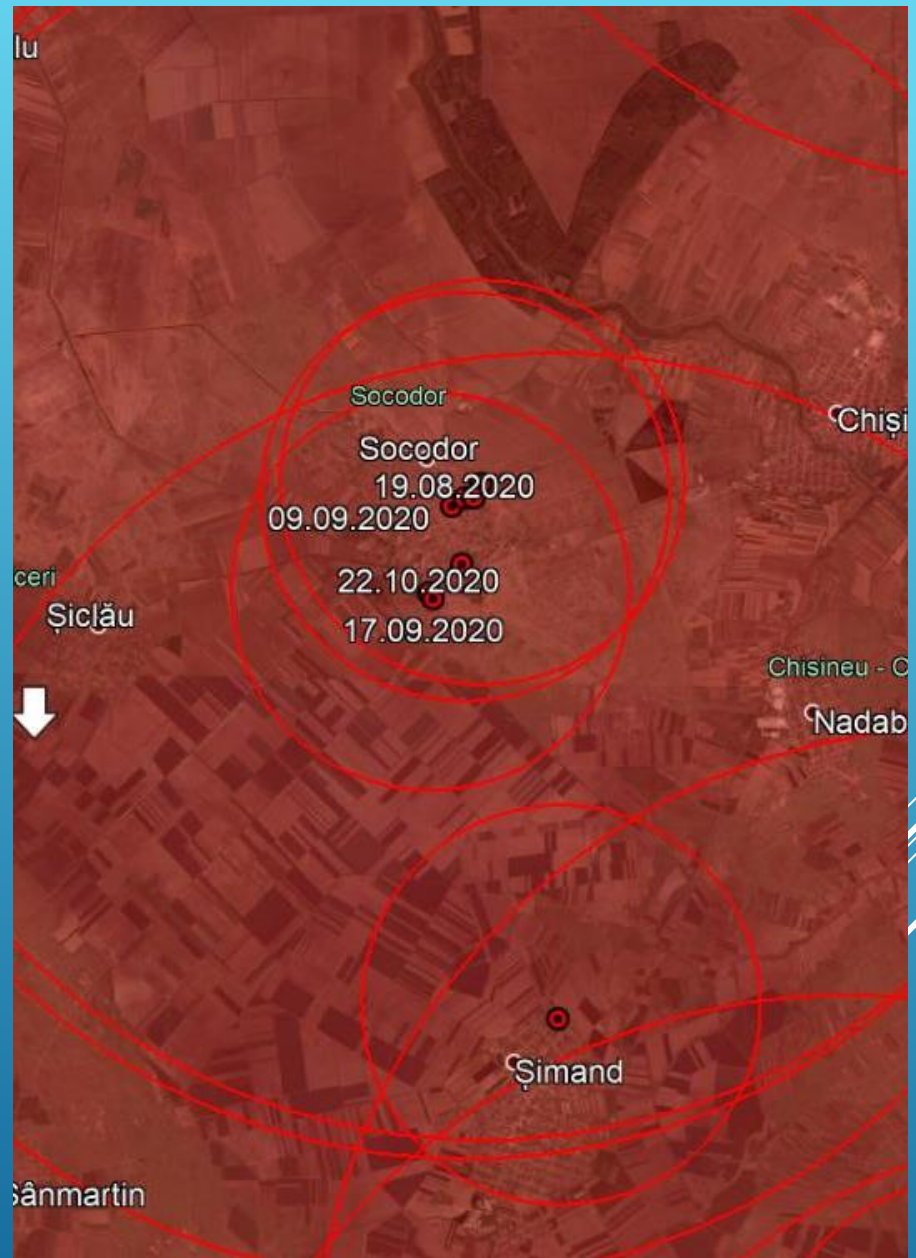
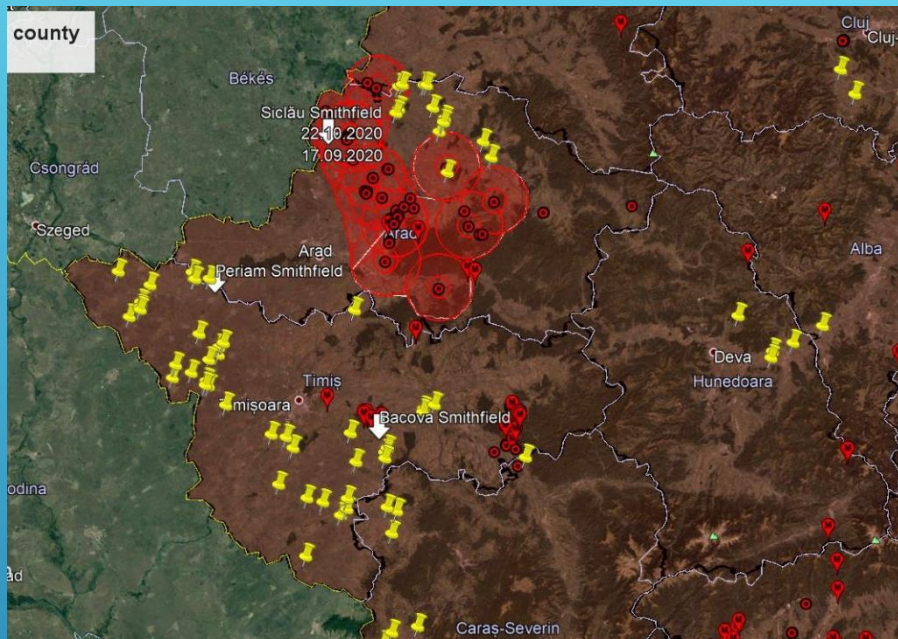


**ADNS 2020/950, 951 and 952** outbreaks are located in areas listed in Part II.

Annex to Implementing Decision 2014/709 / EU was amended.



**INFORMATION REGARDING THE USE OF**  
**DEROGATION OF REMOVAL OF PIGS**  
**FROM A HOLDING WITHIN THE**  
**SURVEILLANCE ZONE**





**Situation 1**- Breeding farm. The number of animals is constantly increasing. Movement restriction imposed since 04.09.2020.

**Situation 2** –Growing farm. Movement restriction imposed since 22.08.2020. Last outbreak in backyards on 02.12.2020.

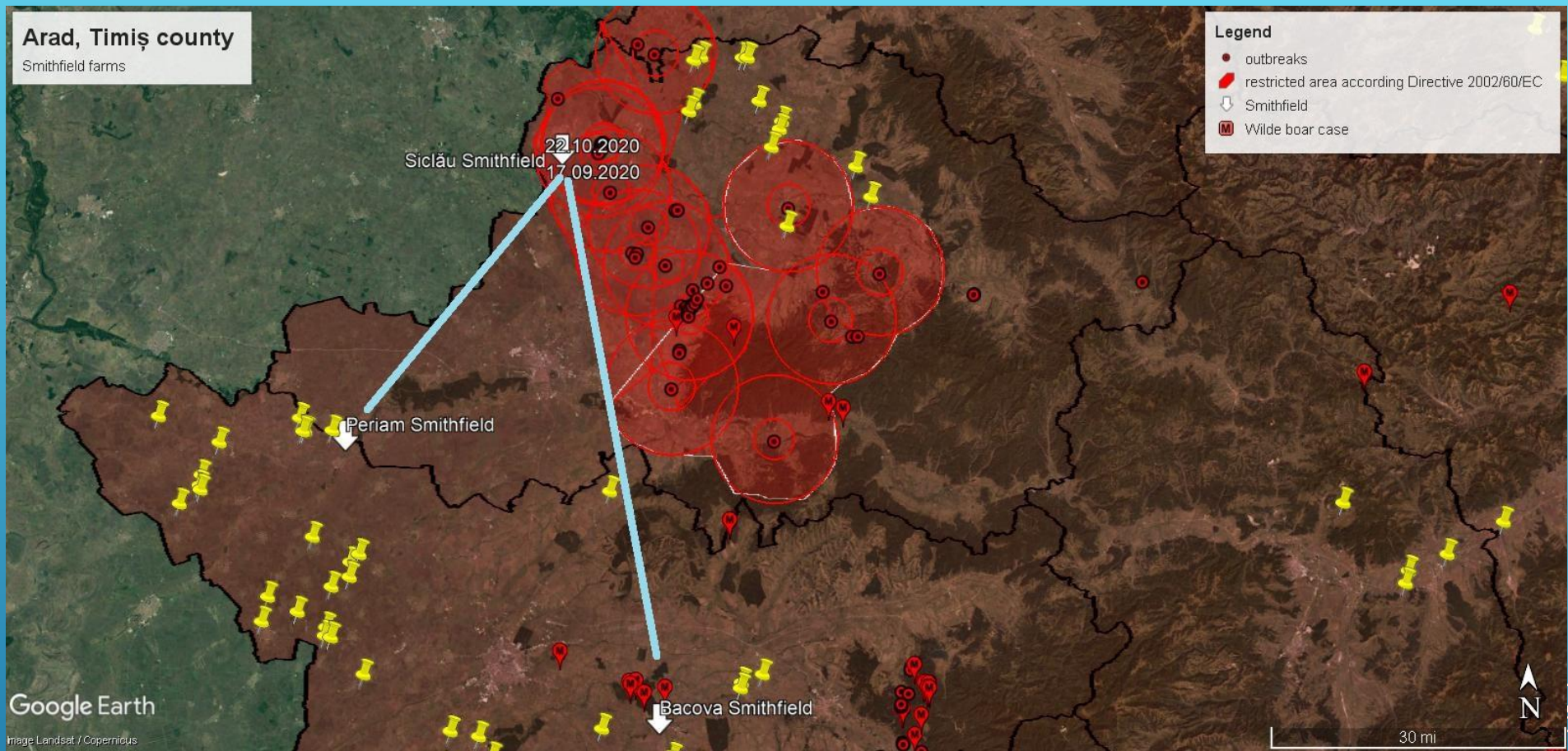
### **Application arguments:**

- at this moment, the minimum welfare norms can no longer be provided,
- the animals show behavioral disorders (otophagous / caudophagy) because the density on the farm is high,
- the pigs are subject of clinical and laboratory examinations to detect a possible presence of ASF virus, the test results being negative,
- delivery with heat treatment can no longer be a solution due to the large number of farms that are unable to deliver,
- the transport of animals will be carried out on established routes, without unloading / stopping and with cleaned and disinfected vehicles.



# Situation 1





In this exceptional situation we are forced to grant the derogation of removal of pigs from the blocked farms situated in the surveillance zone to:

**-Situation 1:** a fattening farm situated in same surveillance zone, in close proximity.

**-Situation 2:** other two farms from same holding group, located in similar epidemiological conditions (same Part III, same infected area due to confirmation in the wild boar).

The National Sanitary Veterinary and Food Safety Authority of Romania



**THANK YOU FOR YOUR ATTENTION!**  
**QUESTIONS?**

